

Union Station Rail Corridor East GO Corridor Expansion: Early Works

Construction Liaison Committee Meeting

James Burchell, Advisor Community Engagement
and Issues Management

More info: metrolinx.com/unionstation/
Contact: TorontoEast@Metrolinx.com

April 14, 2026

AGENDA

USRC-E CLC Meeting - April 14, 2026

Time 6:30 – 8:00pm

TOPICS

- 1 Welcome
- 2 Land Acknowledgement
- 3 Safety Moment
- 4 Introductions and Housekeeping
- 5 GO Expansion/ Union Station Updates - Overview
- 6 USEP/URCE GO Expansion (OnTrack Alliance)
- 7 OnTrack Alliance: Environmental Management - Overview
- 8 Ontario Line Early Works
- 9 Questions & Discussions
- 10 Next Steps and Final Comments

LAND ACKNOWLEDGEMENT

Metrolinx acknowledges that we connect communities by building and operating transit within the traditional lands of the Anishinaabe, the Haudenosaunee and the Wendat peoples, for whom these lands continue to have great importance.

Treaties between First Nations and governments cover these lands, and the promises contained in these Treaties remain relevant to this day.

Metrolinx and its employees are committed to understanding the history of these lands and the continued impacts of colonization and take responsibility for actions to advance reconciliation.

Metrolinx will continue to seek the knowledge, expertise and experience of Indigenous partners and commits to doing business in a manner that is built on a foundation of trust, respect, and collaboration.



Safety Moment

Construction Season is heating up...

- **Barriers are Not Suggestions:** Fencing and cones are placed to protect you from unseen hazards like deep trenches or falling debris. Never "cut through" a construction site or duck under tape to save time—the risks of trips, falls, or falling tools are significantly higher inside.
- **Distracted Passing:** Construction sites are busy environments with moving parts. Put your phone away and take out earbuds when walking or driving past a work zone so you can hear backup alarms or warning cries.
- **Construction Bins:** Do not use site dumpsters for household waste; improper items can create environmental or safety issues for the workers.
- **Traffic Impacts:** When a lane is closed, merge courteously and early to keep traffic flowing smoothly. Flaggers have the same legal authority as a stop sign or red light. Always follow their instructions immediately for your safety and theirs. **SLOW DOWN** and be aware of your surroundings.



Terms of Reference

PURPOSE:

The CLC will provide a communication forum for the Union Station Rail Corridor East (USRCE) construction project teams and community representatives of area residents and businesses to proactively and regularly communicate and discuss construction activities and community impacts. The committee is designed to enable regular access to construction-related information, including schedule and timing information for local business owners, community groups and residents, through CLC representatives and discussions.

MANDATE:

- The CLC is a communication forum to provide open, two-way communication and dissemination of information related to the USRCE area construction, including:
- Site preparation works and construction activities.
- Short- and long-term impacts of works and activities.
- Steps being taken to address impacts of works and activities.

Terms of Reference - continued

The CLC will be a forum for two-way communication and dissemination of information related to USRCE area construction activities that impact the community. The CLC is not responsible for making decisions regarding the project. This is the responsibility of the project team.

The USRCE Team will:

- Provide accurate, understandable and timely information.
- Be open to feedback, give careful consideration to ideas, and report back to the larger project team.
- Adhere to all aspects of the Terms of Reference and Code of Conduct.

Community Representatives or Area Residents and Businesses will:

- Participate actively in regular meetings.
- Be open and receptive to ideas.
- Liaise and act as a representative of pre-identified organization/community/business or stakeholder group by providing feedback to the project team and formally communicating relevant information back to their respective groups.
- Adhere to all aspects of the Terms of Reference and Code of Conduct.

Code of Conduct

Code of Conduct is an important element in everything we do and participate in.

The following items should be followed by all who attend the CLC meetings, as members and staff:

- Keep requested agenda and discussion items within the scope of the working group.
- Participate in a respectful manner.
- Continued engagement throughout all working group meetings to ensure the final product is the result of collaborative discussion.
- Do not interrupt when someone is speaking. Do not dominate discussions. Refrain from foul language and derogatory comments.

Introductions

Community Groups at the CLC table:

- Goodman Worts/Distillery District
- Corktown Common Community
- Market Wharf Condo Community
- Caroline Co-op Residents
- Cathedral Court Co-op Residents
- Longboat Area Residents Association
- West Don Lands Community
- Toronto Community Housing
- MPP Chris Glover, Spadina-Ft. York
- Councillor Chris Moise, Toronto Centre, Ward 13
- Councillor Ausma Malik, Spadina-Ft. York, Ward 10
- City of Toronto - Transit Expansion Office
- St. Lawrence Neighbourhood Association
- Old Town Toronto BIA
- Toronto Waterfront BIA
- Monde Condo Community
- Sugar Wharf Condo Community
- Residences at World Trade Centre
- Lighthouse Residences Condo Community

- East Waterfront Community Association
- Tricon Residential (Maple House residences)

Metrolinx Project staff present:

- Toronto East Community Engagement Team
- Metrolinx Environmental Programs and Assessments
- GO Expansion Enabling Works - USEP/USRCE

Metrolinx Partners with us today:

- OnTrack Alliance - GO Expansion Enabling Works

Housekeeping

We appreciate everyone's interest and engagement and welcome dialogue. We ask that you **hold your questions until the end of this presentation** where there will be ample time to table them. Should a question arise this evening and we are unable to respond in real time, we will make record of the question and take effort to get back to the member as soon as we are able.

For note taking purposes we will be transcribing the presentation, comments and questions to this meeting. Should there be concerns regarding this please submit your questions via email at torontoeast@metrolinx.com if they are not tabled by another member this evening.

GO Expansion

Overview - James Burchell, Community Engagement

April 14, 2026

GO EXPANSION IN A NUTSHELL

The GO Expansion program will provide a range of improvements across the GTHA:

More all-day service



Service in both directions



Capacity for trains every 15 minutes or better



Faster and more efficient fleet



More accessible stations



An expanded Union Station



Over 10,000 weekly trips from 3500 weekly trips in 2019

New trains will reach speeds of 140km/h between stations, making the GO Train faster than taking a car in virtually every instance

Improvements to stations access and boarding and alighting

Capacity for train and passenger movements for the rest of the century

What is GO Expansion?

The GO Expansion program will bring faster, more frequent train service by delivering new transit infrastructure and operational plans that will reduce journey times, add capacity and further improve on-time performance and customer satisfaction.

Why is expanding GO service needed?

With the GO Transit service area - which includes the Greater Toronto, Hamilton Region (GTHA), Kitchener-Waterloo, Barrie and Niagara - expected to grow to 15 million people by 2051, expanding GO service is necessary to help alleviate congestion and offer customers an option that will be more desirable than driving.

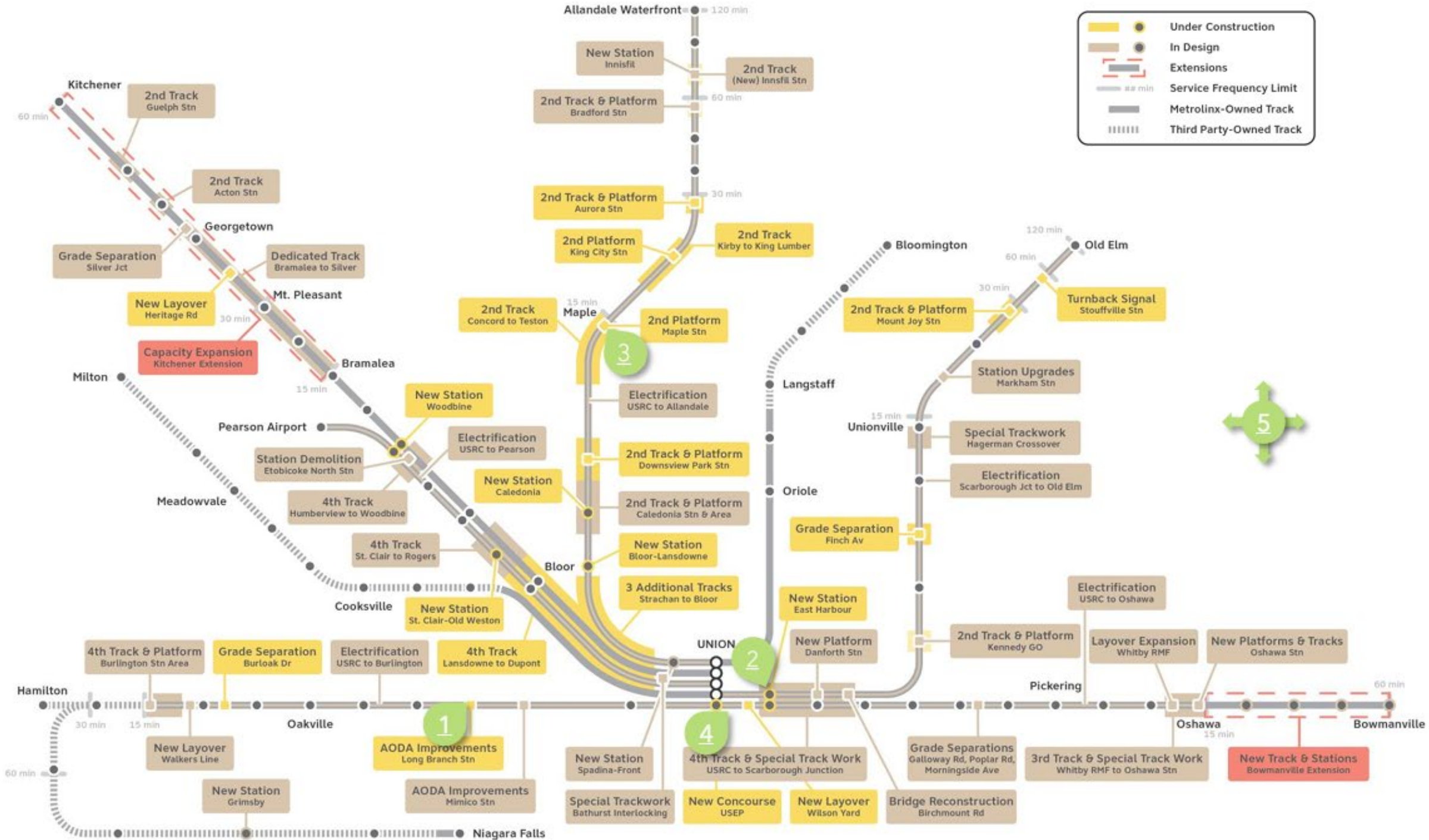
What is the goal of GO Expansion?

The goal is to create a network with the capacity to deliver service every 15 minutes or better, all-day, in both directions on core routes like the Lakeshore East (to Oshawa GO), Lakeshore West (to Burlington GO), Kitchener (to Bramalea GO), Stouffville (to Unionville GO) and Barrie (to Aurora GO) lines.

How do improvements at Union Station and along the rail corridor support this goal?

Union Station and the adjacent rail corridor are known collectively as the Union Station Rail Corridor (USRC).

There are multiple projects underway at Union Station, all working towards the same goal - preparing the Union Station Rail Corridor for GO Expansion service levels.



UNION STATION



FRONT ST

UP Union
Pearson
Express
AIRPORT
TRAIN



WEST WING

GREAT HALL

EAST WING


YORK
CONCOURSE


VIA
CONCOURSE


BAY
CONCOURSE

YORK ST

BAY ST

UNION STATION ENHANCEMENT PROJECT
NEW SOUTH CONCOURSE

25 YORK

MAPLE LEAF
SQUARE

Scotiabank
Arena

BUS
TERMINAL

Go Expansion

Work at Union Station

Work at Union Station includes the construction of transit infrastructure and upgrades at the southernmost part of Union Station.

We're widening platforms, adding more stairs and elevators, and building a new concourse between Bay and York streets.

Work completed to date



Track slab demolition and site excavation



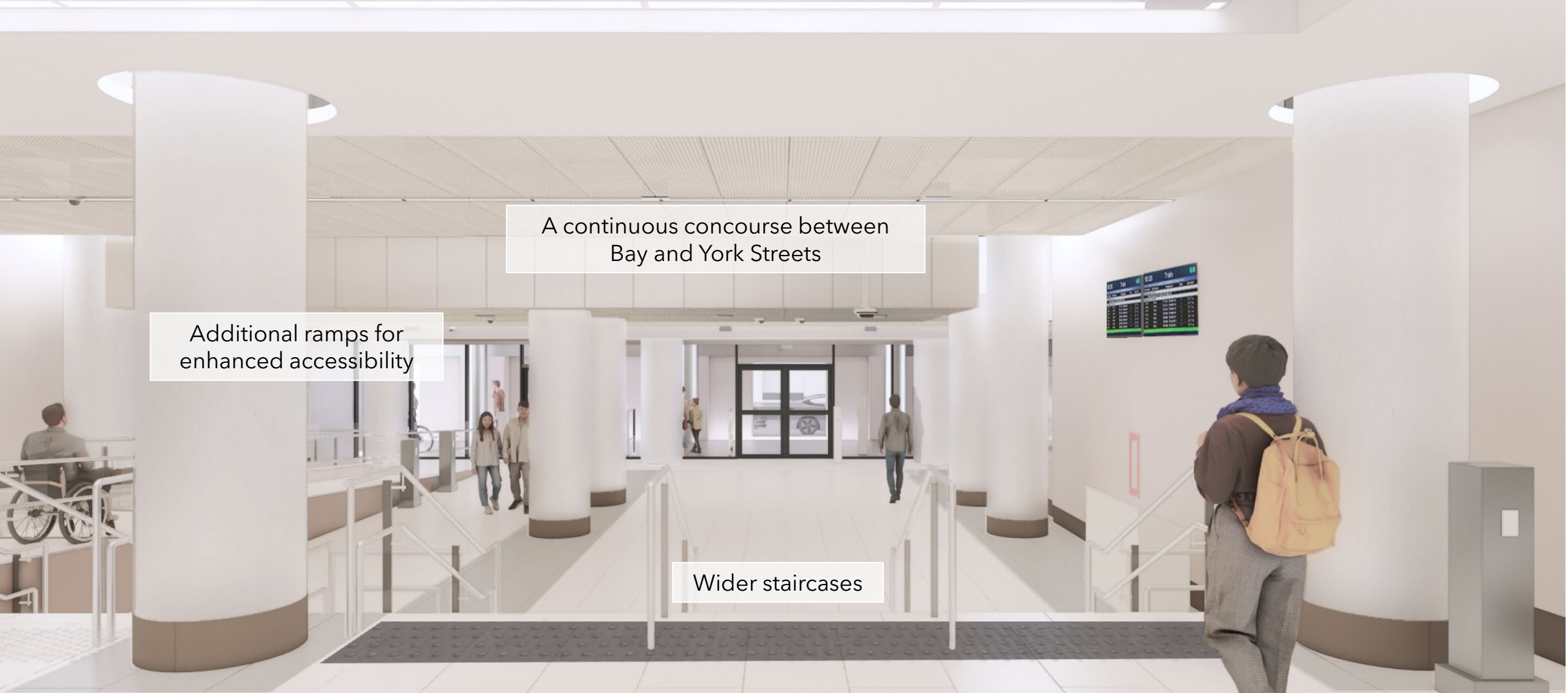
Multiple concrete pours to enable wider platforms and additional rail tracks.



Started the mechanical and electrical fit-out of the newly constructed concourse

LOOKING EAST, MARCH 2026





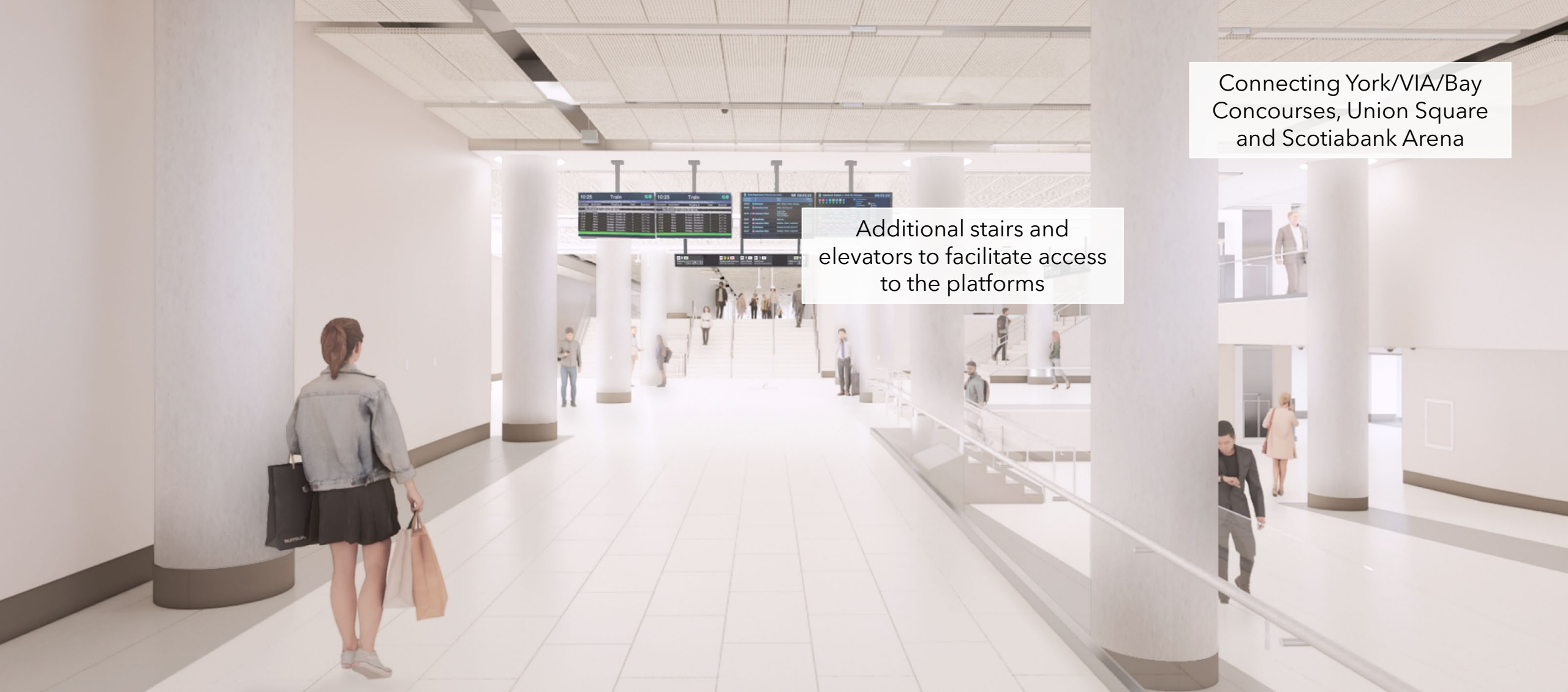
A continuous concourse between Bay and York Streets

Additional ramps for enhanced accessibility

Wider staircases

CONCEPTUAL RENDERINGS

Artist's rendering subject to change. (Metrolinx image)



Connecting York/VIA/Bay
Concourses, Union Square
and Scotiabank Arena

Additional stairs and
elevators to facilitate access
to the platforms

CONCEPTUAL RENDERINGS

Artist's rendering subject to change. (Metrolinx image)



USEP CONCOURSE FIT OUT



USEP CONCOURSE FIT OUT



Looking East, March 2026



Artist's rendering subject to change. (Metrolinx image)

USEP/USRCE - GO Expansion OnTrack Alliance (OTA)

Overview

Anthony Ranallo

Senior Manager, USEP ONTrack Alliance

April 14, 2026

USEP - UNION STATION RAIL CORRIDOR

Union Station and the adjacent rail corridor are known collectively as the Union Station Rail Corridor (USRC).

USRCE works are underway within the rail corridor between Union Station and the Don Yard Maintenance Facility, located adjacent to the Don River. All work is supporting the same goal - preparing the Union Station Rail Corridor for GO Expansion service levels.

The project scope includes:

Complete

- Jarvis and Sherbourne Secant wall installation, wingwall demolition, bridge fascia demolition, abutment installations, and installation of rail bridges

Underway

- Lower Sherbourne & Jarvis Bridge Finishing Works
- Continued USEP enabling works
- Wilson Yard surcharging

Upcoming

- Vertical Circulation Elements
- Lower Sherbourne & Jarvis Bridge Finishing Works
- Wilson Yard wet utility relocation
- Wilson Yard fit out (following wet utility works)

Union Station

Relocating and enhancing Infrastructure along the Union Station Rail Corridor (USRC)

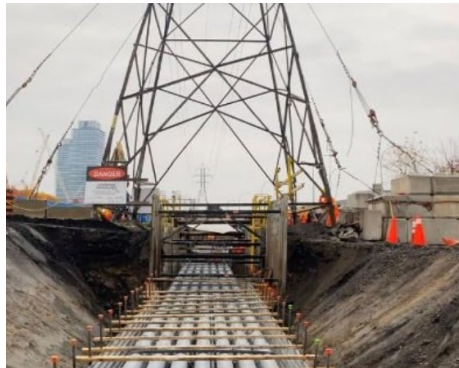
Upgrades to infrastructure are needed to help clear the way for increased capacity within the rail corridor and bring more frequent service.

Go Expansion

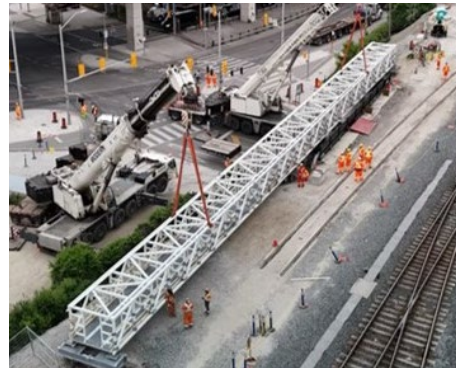
Hydro utility upgrades

We are removing and relocating infrastructure on the south side of the Union Station Rail Corridor, east of Union Station, to allow for two additional sections of track to be installed.

Work completed to date



Built a 1.6 metre-wide duct bank spanning between Sherbourne Street and the Don River next to the rail tracks



Constructed new utility bridges to support the duct bank crossing over Parliament and Cherry streets.



Demolished the existing transmission towers once the overhead lines were removed



Energized all circuits within the newly placed duct bank

East Track Enhancements: Lower Jarvis and Lower Sherbourne streets

We are removing and relocating infrastructure on the south side of the Union Station Rail Corridor, east of Union Station.

We have been reinforcing the corridor to support the widening of the rail bridges that pass over Lower Jarvis and Lower Sherbourne streets to allow for two additional sections of track to be installed.

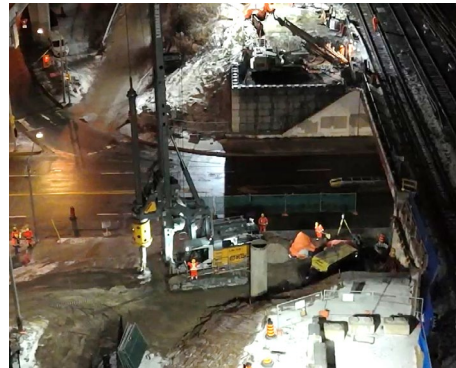
Work completed to date



Installed secant wall



Demolished old wingwall
and bridge fascia



Installed new caissons
foundation

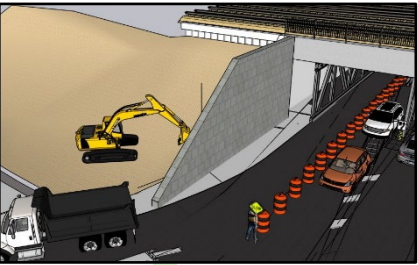


Poured concrete for new
abutments at both bridge
locations

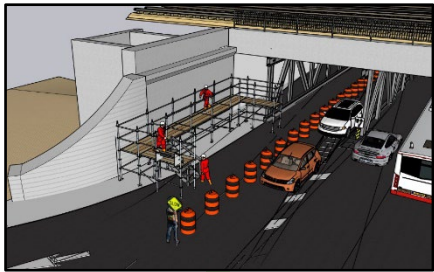


Bridge lifts completed

EAST TRACK ENHANCEMENTS: LOWER JARVIS & LOWER SHERBOURNE STREETS



Secant Wall Installations
Complete



Bridge Fascia Demolitions
Complete

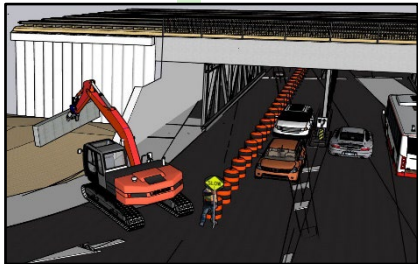


Bridge Fascia Refacing
Complete

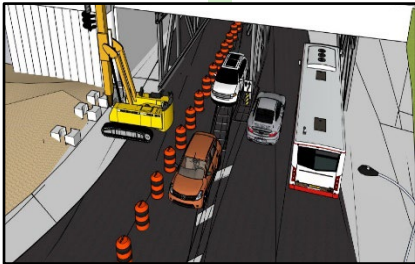


Bridge Lift
Complete

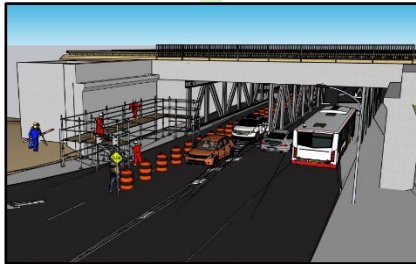
Wingwall Demolitions
Complete



Caisson Drilling and Foundation Installations
Complete



Abutment Installations
Complete



Incidental Works
Spring – Summer, 2026
Minimal Noise



*Visualizations are for illustrative purposes only.
*Timelines are subject to change and the schedule will be updated regularly.

ETE - LOWER SHERBOURNE, OCTOBER 2025



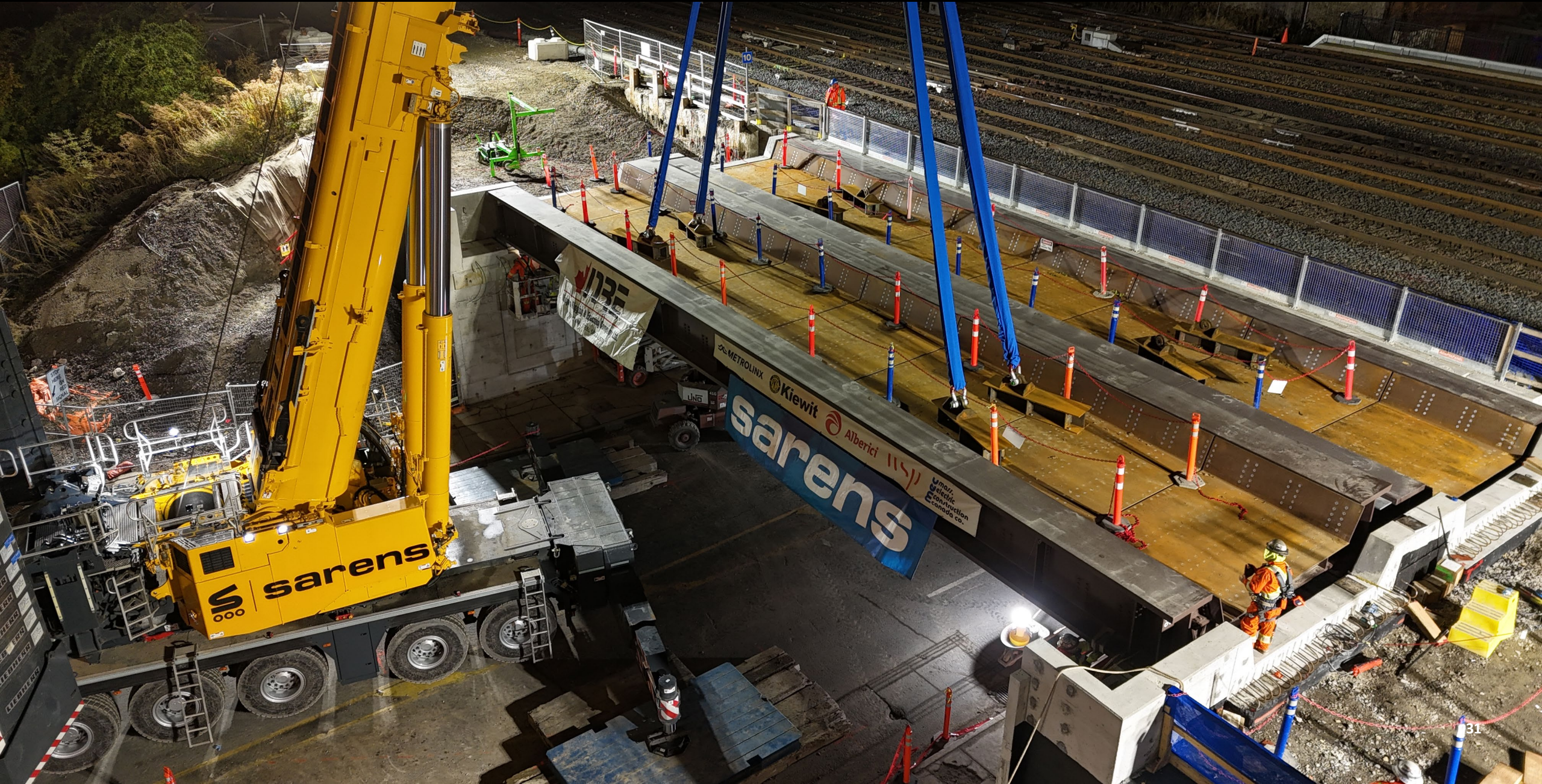
ETE - BRIDGE LAYDOWN AREA, OCTOBER 2025



ETE - BRIDGE LAYDOWN AREA, OCTOBER 2025



ETE - BRIDGE LIFTS, NOVEMBER 2025



ETE - APRIL, 2026



Lower Sherbourne Street, April 2026



Lower Jarvis Street, April 2026

Next Steps: Landscaping and final works, Ongoing - Summer, 2026

2026 LOOK AHEAD: VERTICAL CIRCULATION ELEMENTS

Why is this work happening?

Vertical Circulation Elements (VCEs) are being built to enable access to the new platform.

*When is this work happening?

Deep Foundations / Temp Shoring, Summer 2026

- Bay Street VCE, Summer 2026
- Yonge West VCE, Fall 2026
- Yonge East VCE, End of 2026

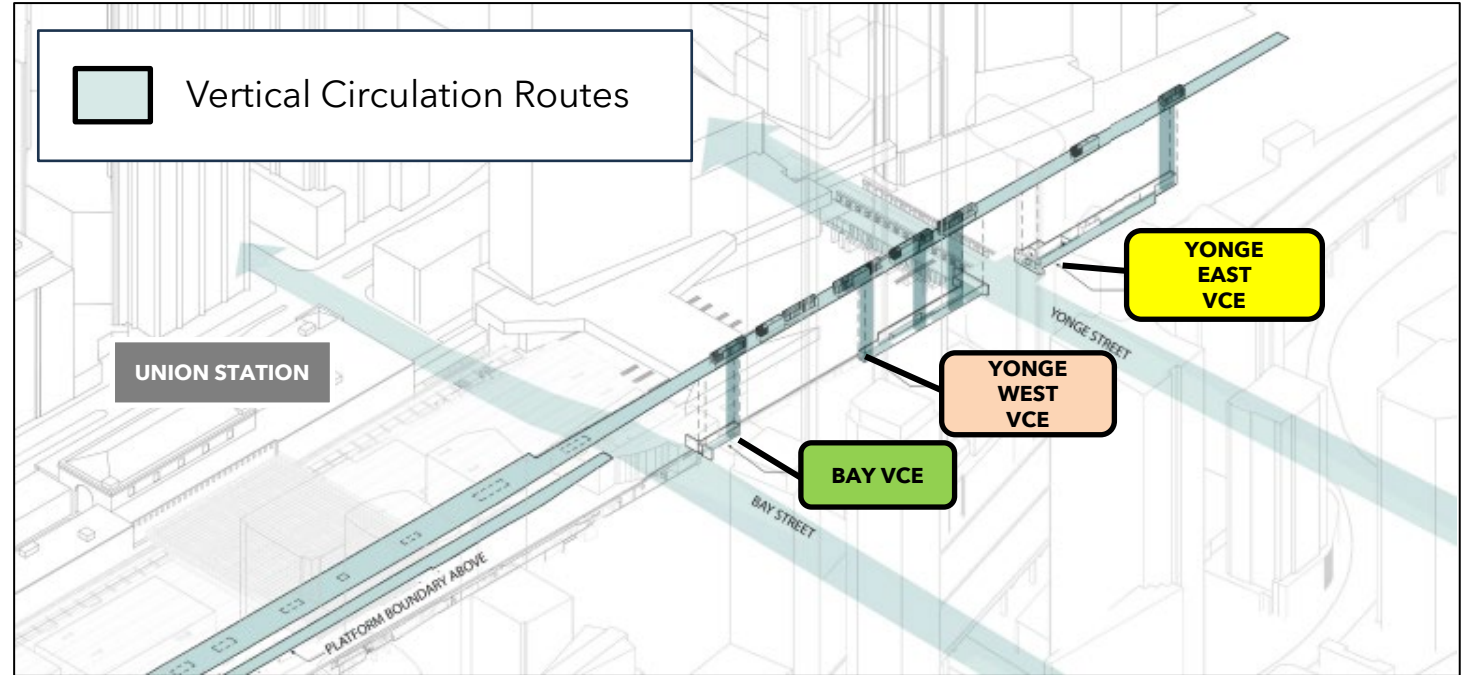
Anticipated Impacts

Intermittent noise and vibration impacts from caisson drilling.

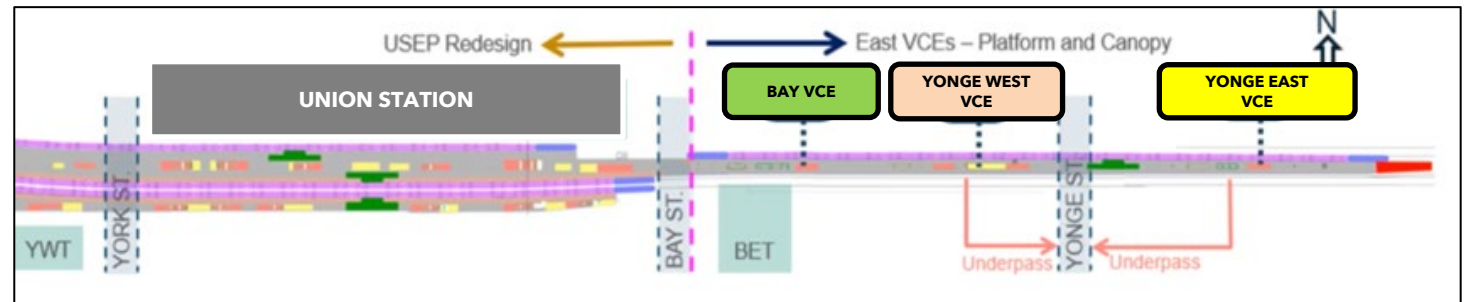
Mitigation Considerations

Baseline Air, Noise and Vibration levels are checked before construction begins, and variations in exceedances are monitored throughout the execution phase. Mitigation measures are implemented on a case-by-case basis.

*All timelines subject to change



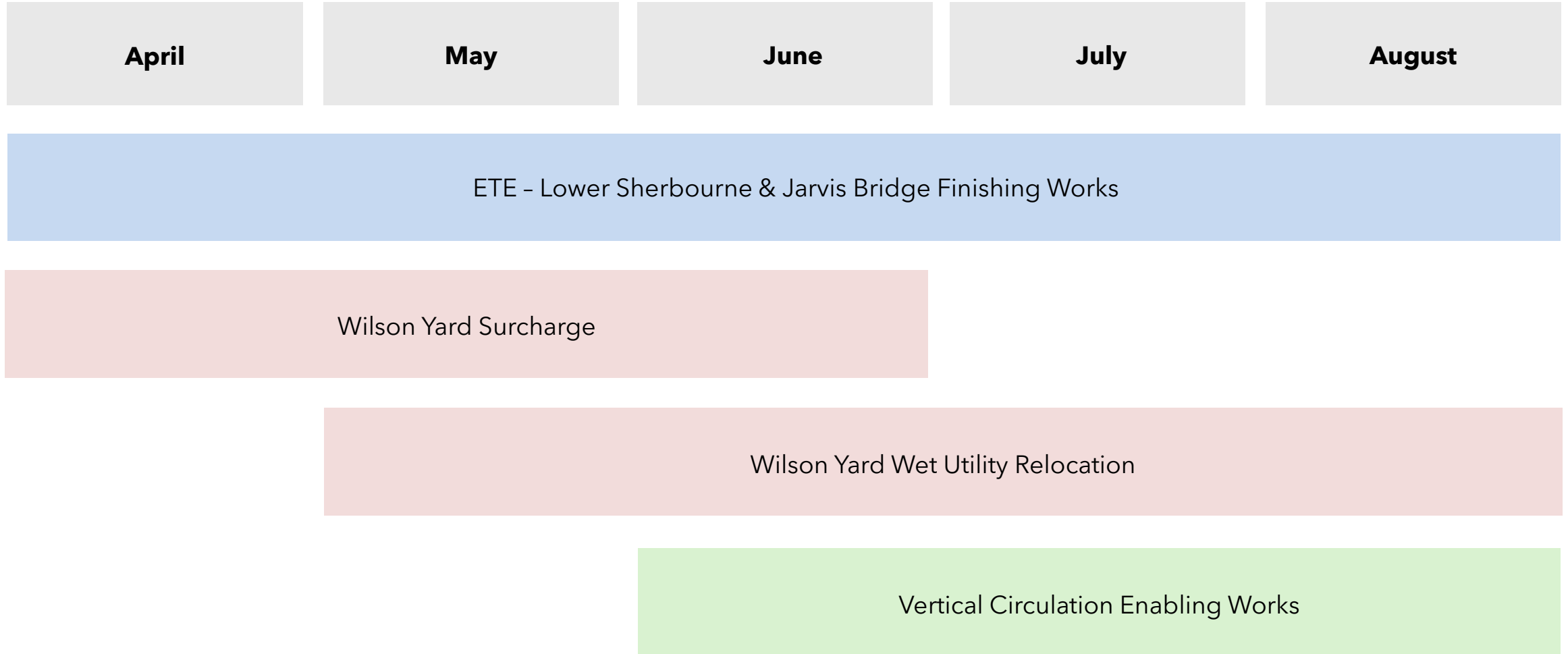
Vertical Circulation Elements and Routes



Vertical Circulation Elements

USRCE PROJECT SCHEDULE

The 2026 FIFA World Cup schedule and City of Toronto requirements have been incorporated into construction scheduling.



*Timelines are subject to change and the schedule will be updated regularly.

Wilson Yard

The Don and Wilson Yards are being combined into a single active rail yard to support future GO Expansion service levels.

Enabling works at Wilson Yard are underway and include grading and drainage work, retaining wall installation, access road construction and utility relocations.

Work completed to date



Commenced with surcharging to prepare the area for the construction of an active rail yard.

Did you know...

- Most of the crushed material for infill came from recycled concrete rubble from the nearby construction sites. This approach diverts and repurposes waste that may otherwise go to landfills.
- After months of sorting to remove metal using a giant magnet, the concrete was crushed to the right size for reuse.

ACTIVITIES - WILSON YARD



July, 2024



September, 2025



March, 2026

ACTIVITIES - WILSON YARD

Retaining Wall Installation - *Complete*

- Retaining wall installation on west side of site is nearing completion. It is being constructed in anticipation of the surcharge in Wilson Yard.

Ground Levelling (surcharge) - *Ongoing*

- Ground area to be raised to the elevation of Don Yard located to the North of Wilson Yard. This will allow for the future installation of additional storage tracks as part of the greater GO Expansion Program this winter.

Wet Utility Relocation - *Upcoming*

- Existing storm and sanitary to be relocated to allow for the future installation of additional storage tracks.

Access Road Construction - *Upcoming*

- Existing access driveway to be regraded to suit surcharge in Wilson Yard.

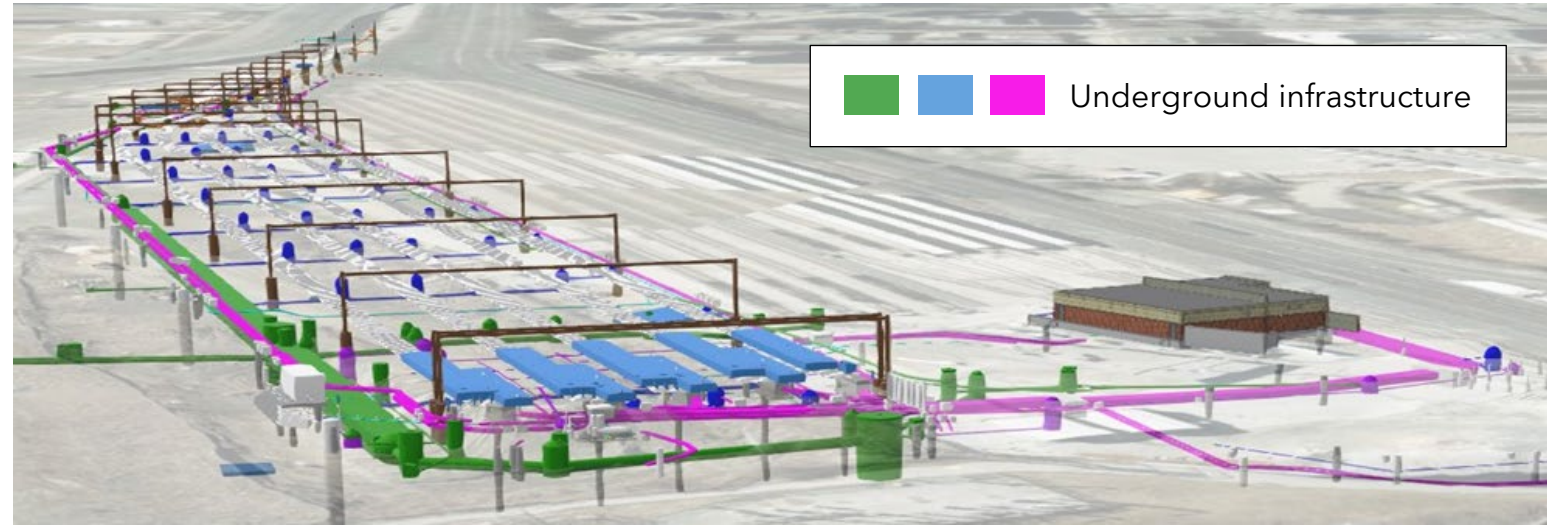


Photo: Wilson Yard Surcharge Zones

FUTURE WILSON YARD FIT-OUT

Enabling works at Wilson Yard are underway and include grading and drainage work, retaining wall installation, access road construction and utility relocations.

Once these works are complete, a fit-out at Wilson Yard will begin.



Wilson Yard Render. Artist's rendering subject to change. (Metrolinx image)

Fit-Out: The work that turns an empty space into one that's ready to use, like adding walls, electrical and mechanical elements.

OnTrack Alliance: Environmental Updates

Dan Beare, Manager
Environmental Programs and Assessment

April 14, 2026

Environmental Management

The USEP project continues to implement a robust environmental management program, reflecting the project scope and evolving site conditions throughout construction.

- ✓ Meeting TRPAP commitments
- ✓ TRCA Voluntary Project Review approval
- ✓ Frequent updates to management plans
- ✓ Demonstrating environmental compliance through weekly inspections
 - Street sweeping, watering dust suppression
 - Erosion and sediment controls
 - Protecting catch basins and storm drains
 - Archaeological monitoring
 - Waste management
 - Noise, vibration, air quality monitoring
 - Soil management
 - Tree Protection Zones
 - Wildlife protection, nesting birds
 - Landscaping



Ontario Line

We Are Here For You

Ontario Line Community Engagement Contact Information

Metrolinx will keep the community, residents and businesses informed by providing project updates, seeking input and feedback and addressing questions and concerns effectively and quickly.

Connect With Us:

- Zahrah Munas , Community Engagement Advisor Zahrah.Munas@metrolinx.com 437-328-5354
- Saadia Murtuza, Senior Advisor Community Engagement Saadia.Murtuza@metrolinx.com 416-434-5665
- Mark Clancy, Senior Manager, Community Engagement Mark.Clancy@metrolinx.com, 647-449-2857

Telephone 24/7 @ 416-202-5100

Ontario Line e-newsletter @ [Metrolinx.com/OntarioLine](https://www.metrolinx.com/OntarioLine)

Follow us on social media @ OntarioLine

Questions & Discussion

Next Steps for the CLC

Overview – James Burchell, Community Engagement

April 14, 2026

Next Steps

- Next meeting will be **August 2026**
- Minutes will be prepared and shared in advance of next meeting for discussion points
- Interim questions can be submitted via email to torontoeast@metrolinx.com.
- Encourage your neighbours to subscribe to the NEW Toronto East (Ontario Line) e-Newsletters at

<https://www.metrolinx.com/en/subscribe-to-emails>



Become a subscriber

Improving Transit. Connecting Communities.

Metrolinx is improving and building an affordable, integrated and sustainable transit network that connects communities to the things that matter most to them.

Subscribe to stay up to date with the latest news, progress announcements and construction updates from Metrolinx. You can unsubscribe at any time.

Personal Details

Please provide us with a few details about yourself

FIRST NAME

LAST NAME

EMAIL ADDRESS

POSTAL/ZIP CODE (OPTIONAL)

Region and Project Preferences

Get timely updates through region-wide newsletters and localized notices, so you can stay informed about major projects, nearby work, and events that matter to you!

Have a question or comment?

Contact us

Améliorer le transport en commun. Relier les communautés.

Metrolinx améliore et construit des transports en commun pour réduire en fin de compte la congestion et faciliter les déplacements dans notre région, de manière plus abordable et durable.

Abonnez-vous pour rester à jour avec les dernières nouvelles, les annonces de progrès et les mises à jour de travaux de construction de Metrolinx. Vous pouvez vous désabonner à tout moment.

Détails personnels

Veillez nous fournir quelques détails sur vous

PRÉNOM

NOM DE FAMILLE

ADRESSE ÉLECTRONIQUE

CODE POSTAL/ZIP (FACULTATIF)

Préférences de région et de projet

Recevez des mises à jour en temps opportun grâce à des bulletins d'information régionaux et à des avis locaux, afin de rester informé des projets majeurs, des travaux à proximité et des événements qui comptent pour vous!

Vous avez une question ?


Contactez-nous

NEW - Interactive Map


<https://www.metrolinx.com/en/projects-and-programs/interactive-map>

Projects & Programs > Interactive Map

Welcome to our interactive map. Explore construction taking place in your neighbourhood and across southern Ontario. Zoom in to see details, and click on construction notices, stations, lines and community offices for information, images and videos. Click "Enlarge" below the map to show it full-screen.



Enlarge



Union Station: Upcoming Construction Activities and Impacts on Lower Jarvis Street

August 30, 2025 - May 31, 2026

Date of Notice
January 1, 2026

SHARE




Image of the area where work is happening

What is Happening?
Construction activities at Union Station and within the Union Station Rail Corridor (USRC) are being completed in phases to deliver the required infrastructure needed to bring two-way, all-day rail service every 10 minutes or better along core segments of the GO network as part of the greater GO expansion mandate. As part of the Union Station Enhancement Project, we're completing track infrastructure upgrades within the USRC to increase capacity, bringing you more frequent service as part of GO Expansion enabling works. GO Expansion will offer more service with faster trains, more stations and seamless connections to a regional rapid transit network. We have been removing and relocating infrastructure on the south side of the Union Station Rail Corridor east of Union Station and reinforcing the corridor to support the widening of the rail bridges that pass over Lower Jarvis and Lower Sherbourne Streets. This will allow for two additional sections of track to be installed, and will provide an increased transit capacity, offer a more efficient and reliable service with faster trains, and allow for future electrification as part of the larger GO Expansion Program.

Below is a list of ongoing and upcoming construction activities at Lower Jarvis Street for your early awareness:

- Secant Wall Installations:** Secant pile walls consist of a series of overlapping drilled concrete piles, that are reinforced with rebar. These secant pile walls are installed as a retaining wall for the rail corridor to enable foundation work for the future bridge expansion.
- Wingwall Demolitions:** Wing walls at the east and west portion of the rail bridges south of the corridor will be demolished to make room for caisson foundations.
- Caisson Drilling and Foundation Installations:** Caisson foundations are constructed by drilling a series of concrete piles that are reinforced with rebar. These foundations will be supporting the future bridge extensions.
- Bridge Fascia Demolition:** The south fascia of the existing rail bridges will be demolished in preparation for the bridge expansion work. This work will span the entire length of the bridge resulting in a full street closure.
- Abutment Installations:** Bridge abutments will be installed as substructures to support the future bridge superstructures.
- Bridge Lift:** The new bridge decks will be lifted into place from roadside to expand the corridor from a 6-track bridge to 8-tracks.
- Bridge Finishing Works:** Our finishing works here include several activities including the construction of a wingwall, repaving, grading, landscaping and cleaning up the site.

What to Expect?

Come See Us....

GO Expansion

Customer Appreciation Event

Wednesday, April 22
Bay Concourse - Union Station

Join us on Wednesday, April 22, at Union Station, in the Bay Concourse, south side near Scotiabank Arena exit, for a special Customer Appreciation Event hosted by Metrolinx. Explore the exciting enhancements underway at Toronto's iconic transit hub and discover how they will benefit GO Transit customers.

At the Customer Appreciation Event, see behind-the-scenes footage from the Union Station Enhancement Project and artifacts uncovered during excavation work. Come visit to learn how we're bringing two-way, all-day rail service every 15 minutes or better along core segments of the GO network as part of GO Expansion.

 **METROLINX**



USEP Customer Appreciation Event:

April 22

Union Station - Bay Concourse
near Scotiabank Arena
entrance: 7am-7pm

