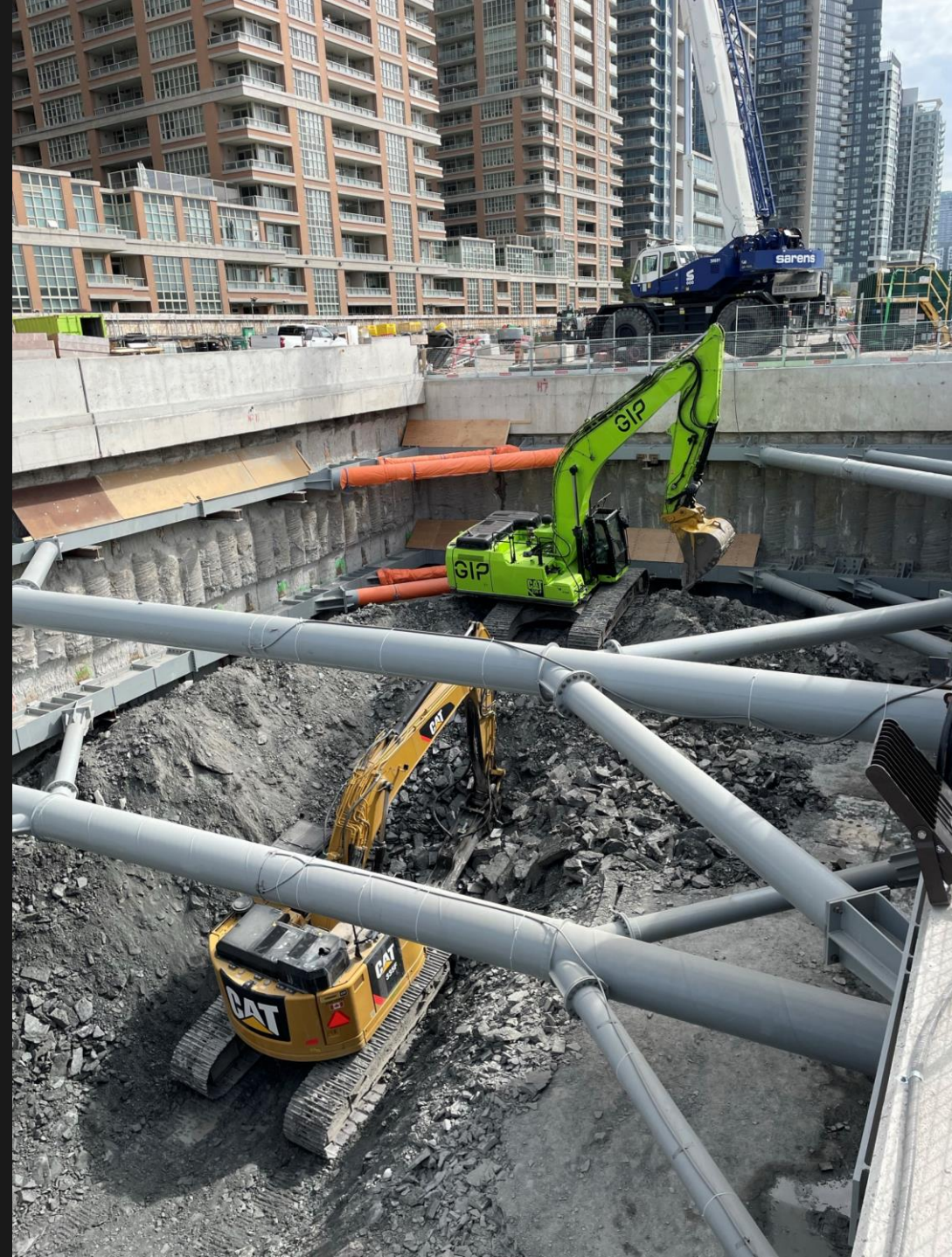


Ontario Line

Exhibition Construction Liaison Committee

June 11, 2025



Agenda

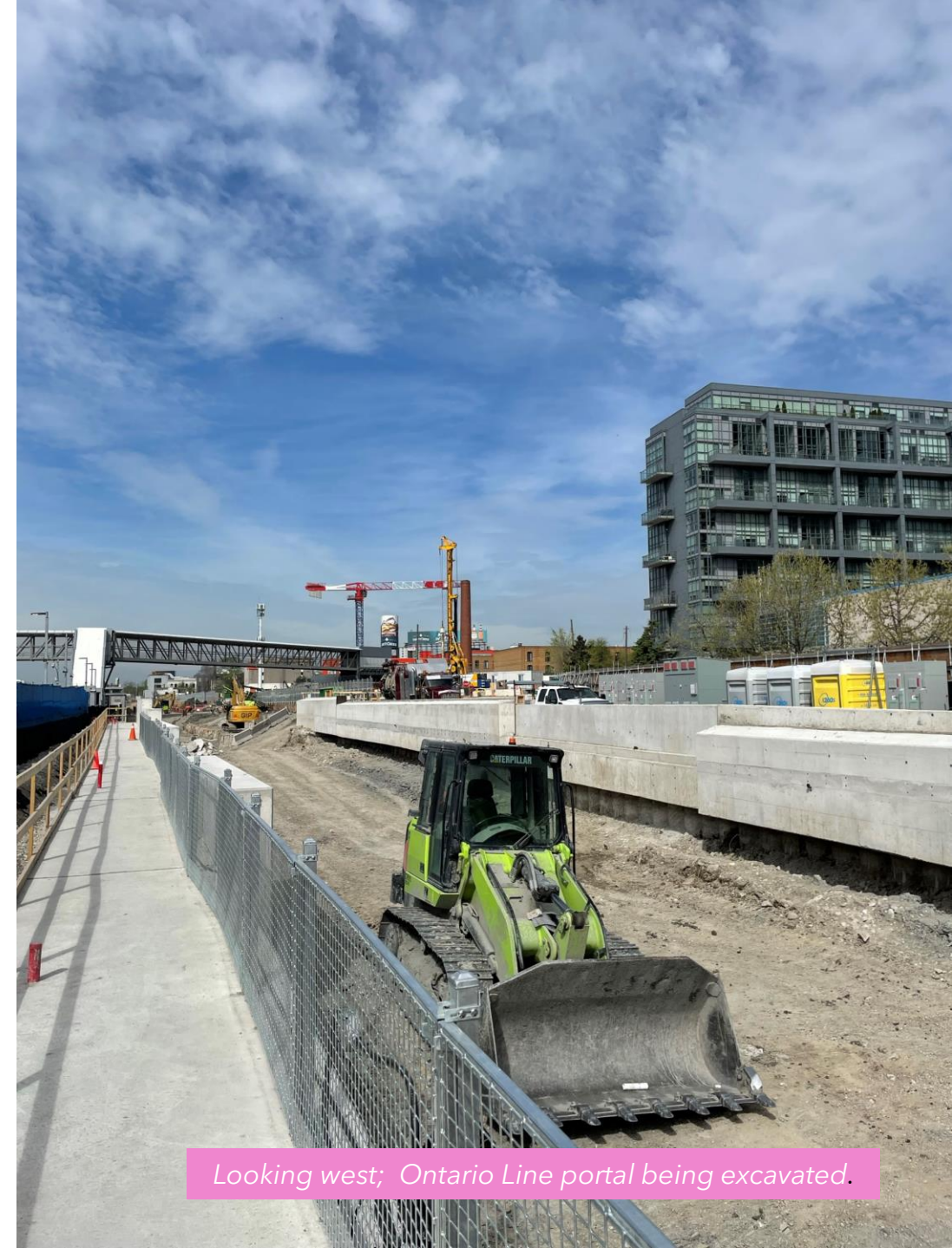
Welcome (5 minutes)

- Introductions
- Land Acknowledgement
- Code of Conduct

Presentation (30 minutes)

- Safety Moment
- Action Items
- Managing Community Impacts
- Truck Safety Plan
- Construction Update
- Upcoming Work
- Discussion

Q/A and Discussion (25 minutes)



Looking west; Ontario Line portal being excavated.

LAND ACKNOWLEDGEMENT

Metrolinx acknowledges that we connect communities by building and operating transit within the traditional lands of the Anishinaabe, the Haudenosaunee and the Huron-Wendat peoples, for whom these lands continue to have great importance.

Treaties between First Nations and governments cover these lands, and the promises contained in these Treaties remain relevant to this day.

Metrolinx and its employees are committed to understanding the history of these lands and the continued impacts of colonization and take responsibility for actions to advance reconciliation.

Metrolinx will continue to seek the knowledge, expertise and experience of Indigenous partners and commits to doing business in a manner that is built on a foundation of trust, respect, and collaboration.

Session Guidelines

We greatly appreciate the community members who are here to take part in this public session.

To ensure that everyone can contribute to a positive and safe community experience, all participants shall adhere to the following *Code of Conduct*:

- Treat the presenters and participants with respect and understanding
- Acknowledge and appreciate the diversity of individuals and their situations
- Refrain from supporting or engaging in any form of discriminatory behaviour

Metrolinx is committed to fostering a safe and respectful environment.

We encourage respectful and constructive communication.

SAFETY MOMENT - EXCAVATION ZONES

Ontario Line construction is in the excavation phase, which means increased heavy equipment activity and deeper work zones.

Please stay alert and follow these safety reminders when walking near the site:

- **Use designated pedestrian routes.**
Excavation zones are fenced off for your protection. Please don't cross into restricted areas.
- **Stay clear of machinery.**
Excavators, dump trucks, and drilling rigs have limited visibility. Avoid standing near site access points.
- **Watch for changes in sidewalk routes.**
As excavation progresses, pedestrian detours may shift. Follow posted signage and flag persons.



Ontario Line portal being excavated.

CLC ACTION ITEMS

No action items at this time.

MANAGING COMMUNITY IMPACTS

Measure in place

Street sweepers are cleaning the entrances / exits of sites, as well as some adjacent streets. Sweeping takes places as needed and in coordination with works.



Crews spray water at the excavation site to dampen materials as they are removed and before they are loaded into trucks. This activity contributes to dust suppression.



Trucks stage inside of the site, to minimize impact on streets in the neighbourhood.



Mud mats are in place at site exits to assist with removal of any debris from truck tires before they leave the site. This is an effective measure in handling mud on tires. These mud mats exist at all inbound and outbound haul route gates within the site.



Truck Safety Plan

METROLINX TRUCK SAFETY PLAN OBJECTIVES

To ensure the safe and efficient movement of construction traffic Metrolinx developed the Truck Safety Plan (TSP) to provide clear targets that guide every decision and action. The following objectives form the foundation of the plan.

1. **Prioritize public safety**
2. **Minimize community impacts**
3. **Ensure regulatory compliance**
4. **Support operational efficiency**
5. **Promote transparency and accountability**

Truck Route Safety Plan Overview

Key considerations used for the selection of truck routes include regulatory compliance, road suitability and traffic operations, Community impacts and route Flexibility.

This plan includes criteria and measures to ensure safe and efficient movement of trucks by developing designated routes for each site in collaboration with the City and local stakeholders, including provisions for monitoring compliance and enforcement of routes. When it is not feasible to conform completely to key considerations, mitigations reduce community disturbances. These mitigations include, traffic control measures, driver awareness and education, noise and emissions reduction, time of day restrictions, staging and holding areas, targeted enforcement.

Monitoring Compliance

Metrolinx is committed to developing and implementing truck routes that prioritize public safety, respect local communities, and support efficient construction operations. This is done through effort such as driver education, inspections, and public input.

Enforcement and Incident Response

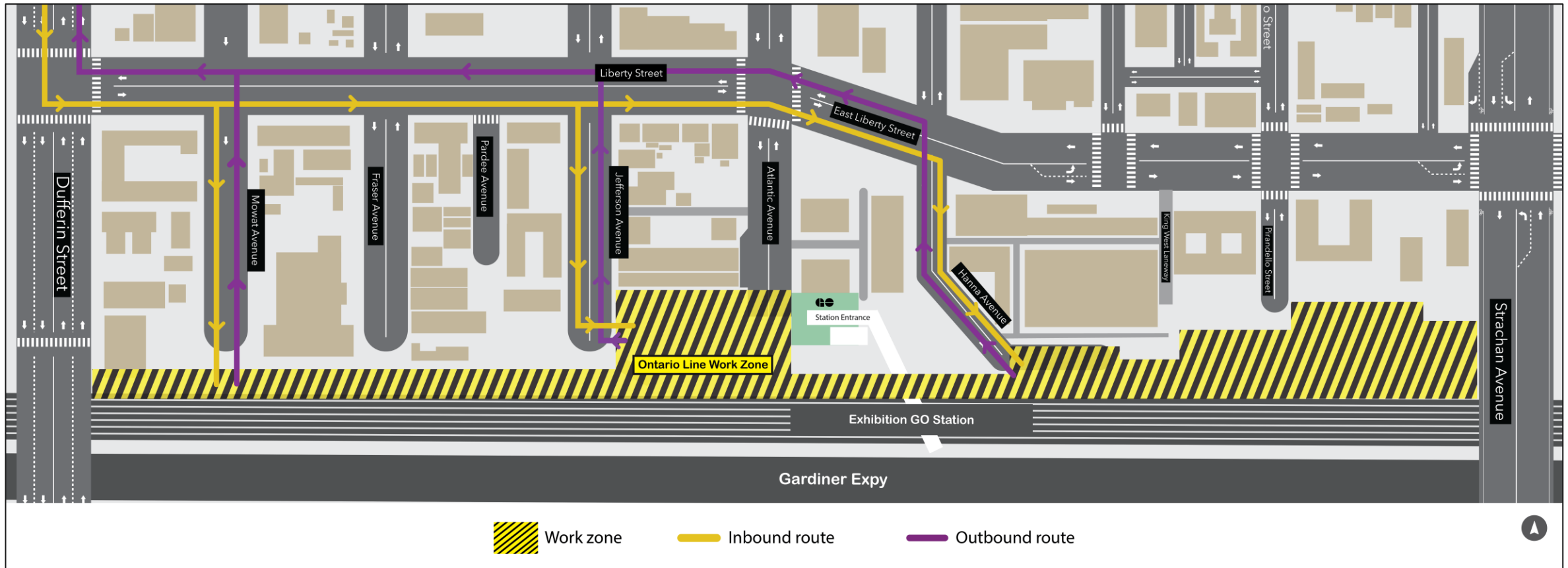
Enforcement and incident response protocols are embedded within the TSP. These protocols reinforce a culture of accountability and safety.

For more information

Please visit the Metrolinx website [here](#), for our Truck Safety Plan frequently asked questions.

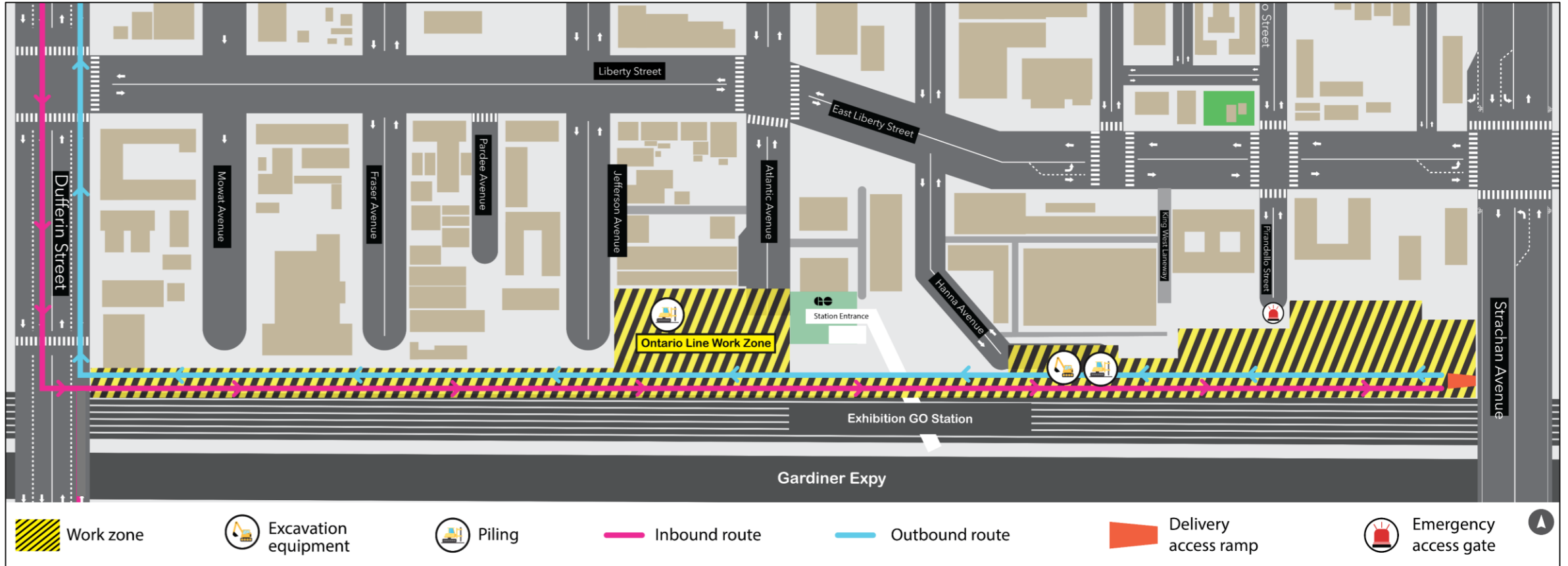
If you have any questions or concerns regarding truck routes, please call our 24-hour hotline at 416-202-5100 or email us at ontarioline@metrolinx.com

TRAFFIC MANAGEMENT PLAN



- No trucks are using the Dufferin Street bridges (south of Liberty Street) at present.
- No trucks are using East Liberty Street or Strachan Avenue at present.
- The number of trucks is forecasted to drop as the excavation of the portal is about to be completed.

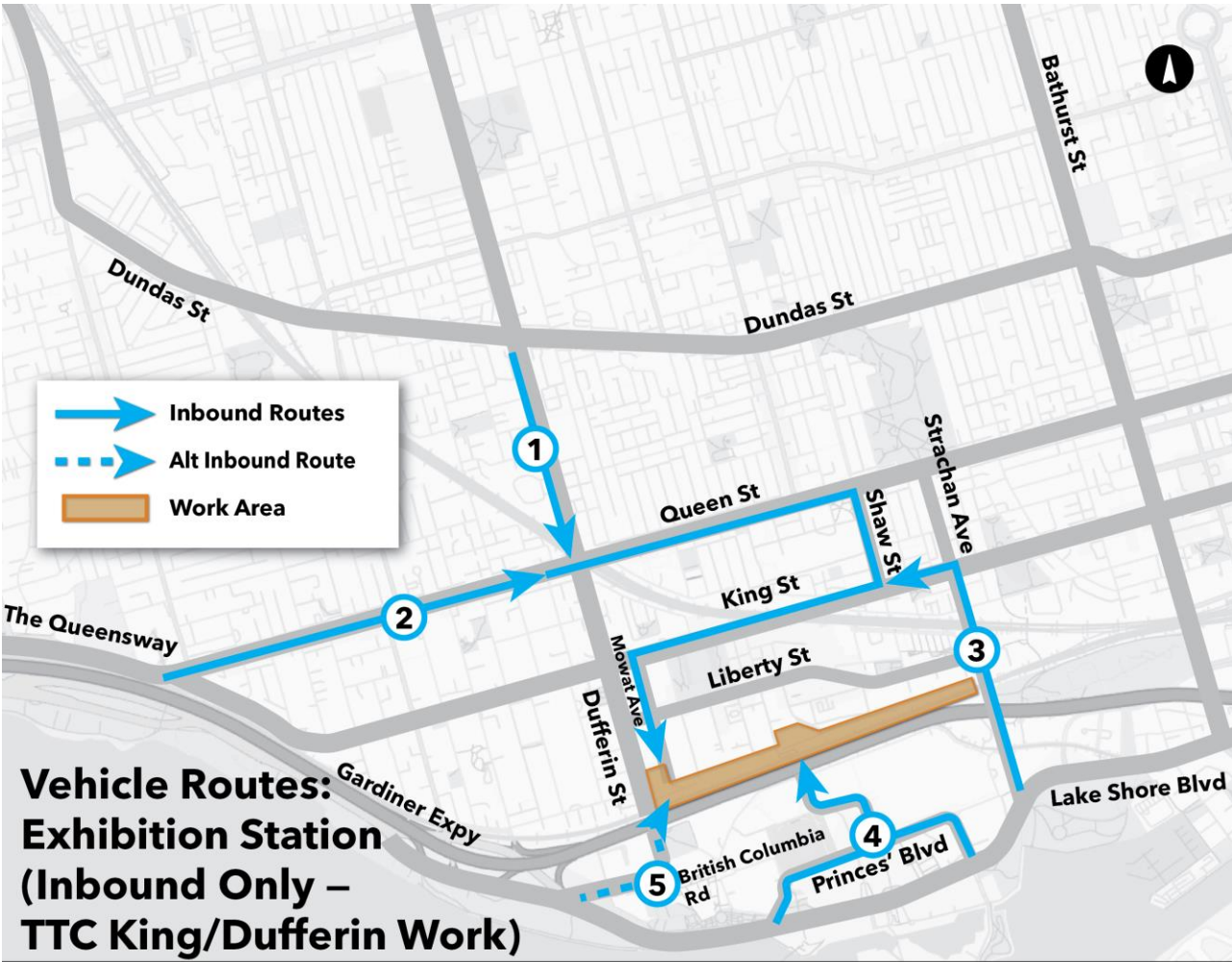
TRANSITION TO FUTURE EXHIBITION STATION TRUCK ROUTE PLAN



- As of June 11, access from Dufferin Street has been initiated and will allow transition away from city streets
- This layout represents the future state inbound and outbound traffic routes, supporting Ontario Line site works.
- Dufferin Street from the south will be the primary inbound route, pending an assessment of the bridge (July 2025).

Exhibition Station Truck Routes (Inbound - TTC/Dufferin Construction)

Please note that the truck routes and volumes outlined are subject to change.

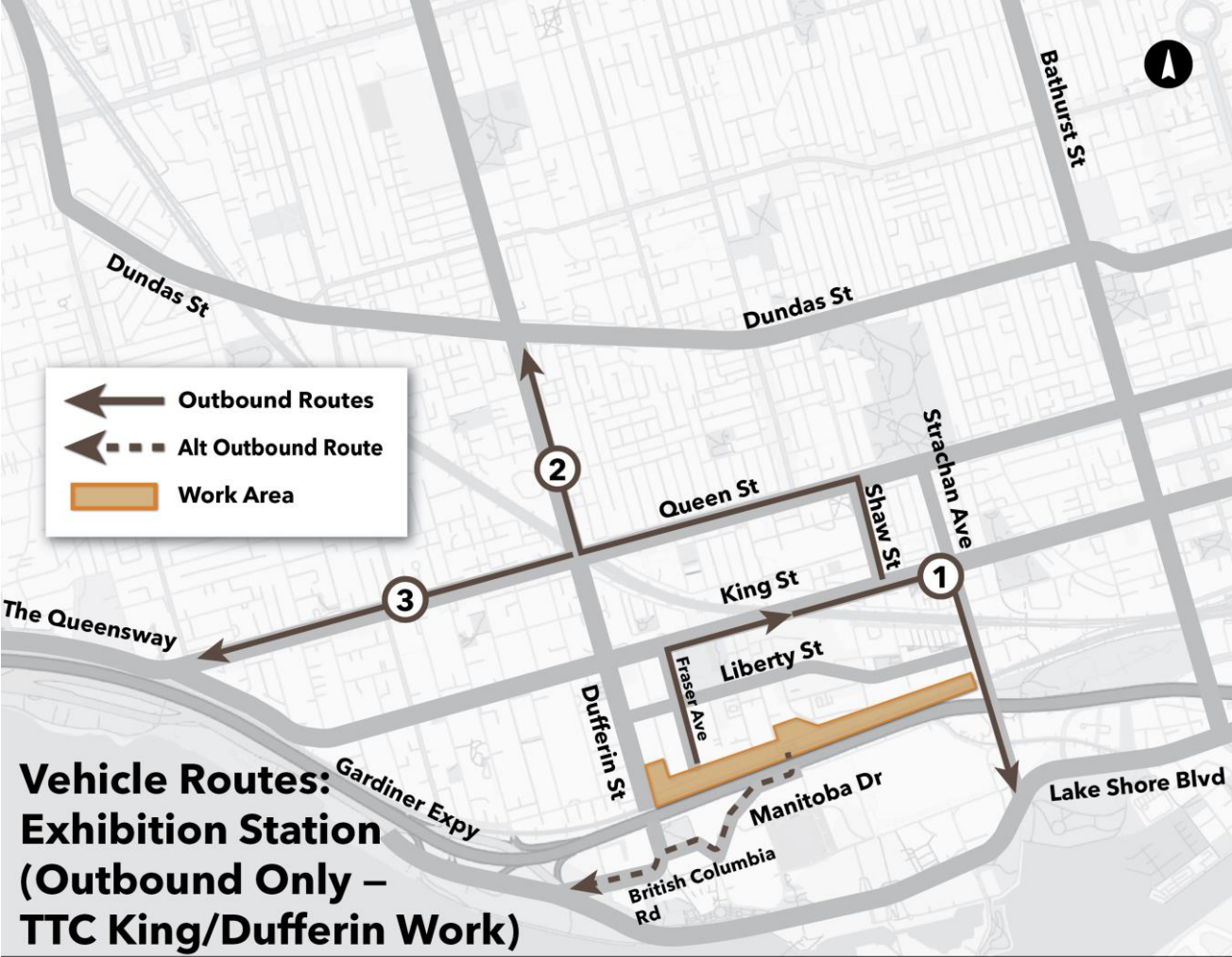


- 1** Dufferin south to Queen, east to Shaw, south to King, west to Mowat, south to site
- 2** Queen east to Shaw, south to King, west to Mowat, south to site
- 3** Lakeshore to Strachan, north to King, west to Mowat, south to site
- 4** Lake Shore to Ontario or Newfoundland, north to Prince's, east/west to Nova Scotia, north to site
- 5** **Alternative route for empty trucks:** Lake Shore to British Columbia, north to Dufferin to site

Peak Average Daily Truck Count: TBD

Exhibition Station Truck Routes (Outbound - TTC/Dufferin Construction)

Please note that the truck routes and volumes outlined are subject to change.

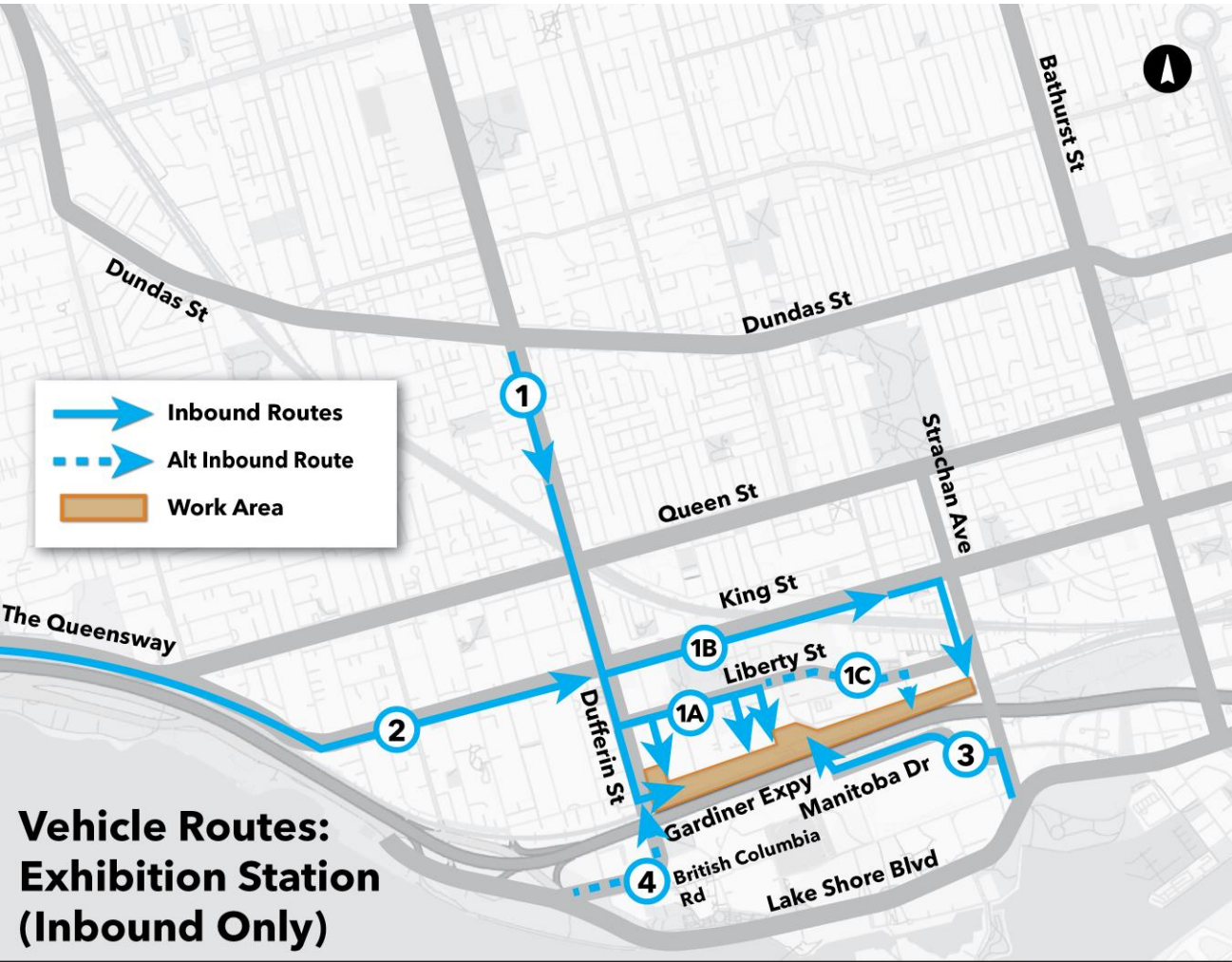


- ① Fraser north to King, east to Strachan, south to Lake Shore/Gardiner
- ② Fraser north to King, east to Shaw, north to Queen, west to Dufferin, northbound
- ③ Fraser north to King, east to Shaw, north to Queen, west to Queensway
- ④ Alternative route for empty trucks: Manitoba west to British Columbia, south/west to Lake Shore/Gardiner

Peak Average Daily Truck Count: TBD

Exhibition Station Truck Routes (Inbound Only)

Please note that the truck routes and volumes outlined are subject to change.

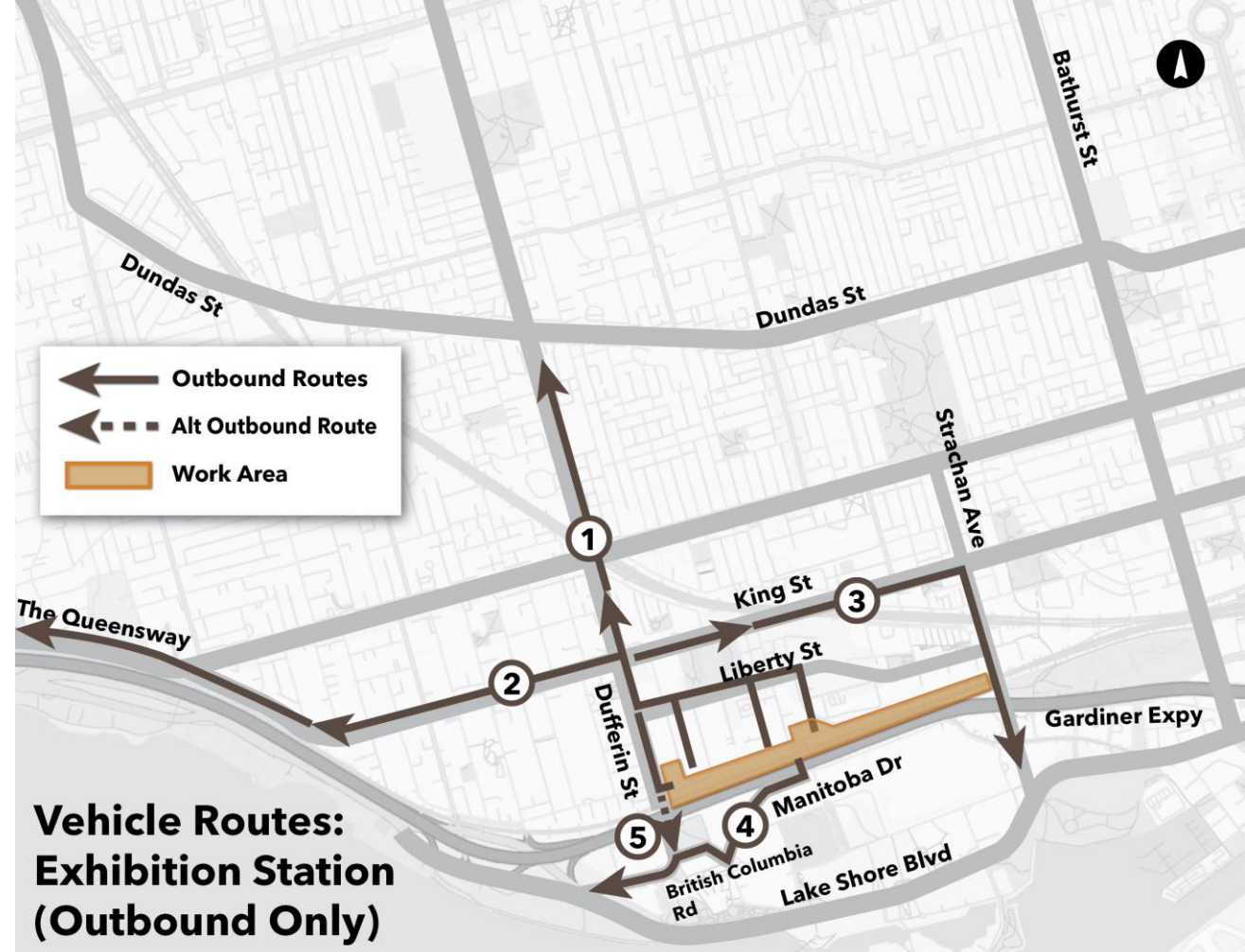


- 1 Primary route:** Dufferin south to site (main access gate)
- 1A Secondary route:** South on Dufferin to E Liberty, east to Mowat/Jefferson/Atlantic, south to site
- 1B Secondary route – logistics only:** East on King to to Strachan, south to site.
- 1C Secondary route/maintenance access:** East Liberty to Pierandello, south to site
- 2 Gardiner east to Queensway, east to King St, split into 1, 1A & 1B**
- 3 Lakeshore east to Strachan, north to Manitoba Dr, west to site**
- 4 Alternative route for empty trucks:** Lakeshore to British Colombia, north to Dufferin to site

Peak Average Daily Truck Count: TBD

Exhibition Station Truck Routes (Outbound Only)

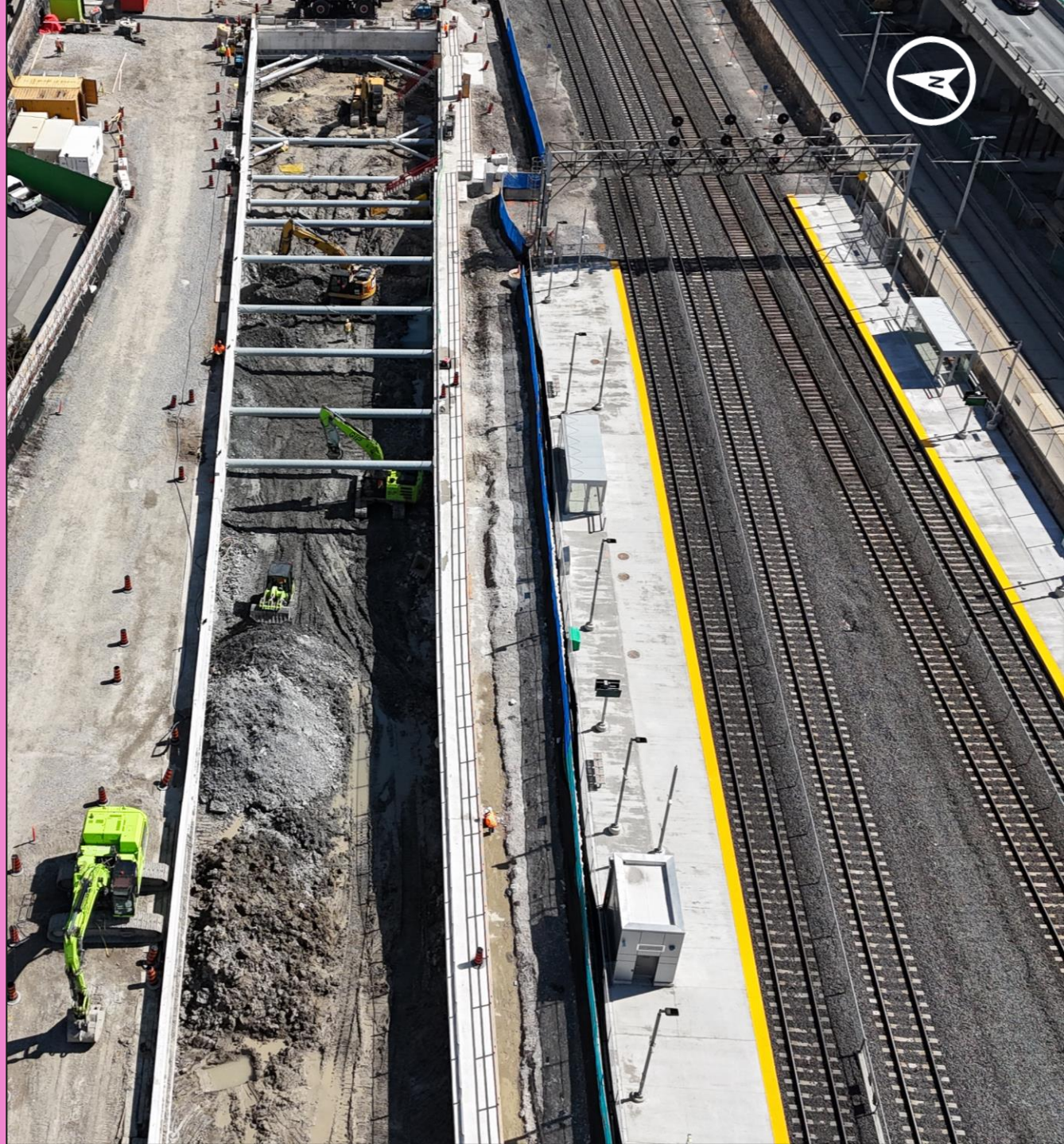
Please note that the truck routes and volumes outlined are subject to change.



- 1 Primary Route:** Exit site to via Dufferin or Mowat/Jefferson/Atlantic to E Liberty to Dufferin, northbound
- 2** Dufferin to King, west on King to Queensway, take on ramp to Gardiner
- 3** Dufferin north to King, east to Strachan, south to Lake Shore/Gardiner
- 4** Manitoba west to British Columbia, west to Gardiner/Lakeshore
- 5 Alternative Route for empty trucks:** Dufferin south to British Columbia, west to Gardiner/Lake Shore

Peak Average Daily Truck Count: TBD

Exhibition Construction Update



CURRENT WORKS: FUTURE EXHIBITION STATION CONSTRUCTION OVERVIEW

Work continues on major projects within the Exhibition site to deliver the Ontario Line and new transit hub, including:

- Excavation of the Ontario Line portal site, east of the GO station entrance.
- Construction of the new station building to the west of the existing entrance on Atlantic Avenue, north of the existing GO tracks.
- Foundational supports in the rail corridor, to enable future shared Ontario Line & GO train platforms, shifting the existing tracks, and a new concourse.
- Utilities relocations and tunnel boring plant preparations.



Overhead shot of the future north main entrance area, against the backdrop of Liberty Village.

CURRENT WORKS: FUTURE EXHIBITION STATION PLATFORM WORKS

Construction is underway to create the **new station foundations and shared passenger platforms**, at Exhibition station.

Four new shared platforms are being built, from the north to south:

- 1 new Ontario Line subway platform
- 1 shared platform for GO Transit and Ontario Line subway
- 2 new dedicated platforms for GO Transit

Construction Activities:

- Permanent foundations drilling
- Rebar installation and concrete pouring



Grading and foundational works along the rail corridor.



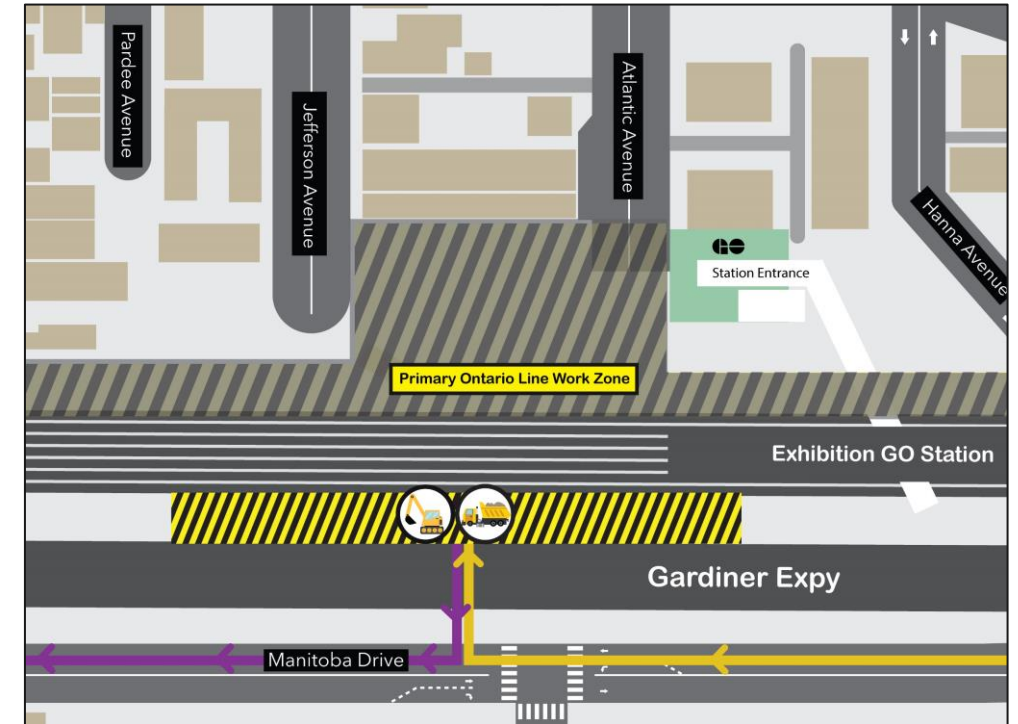
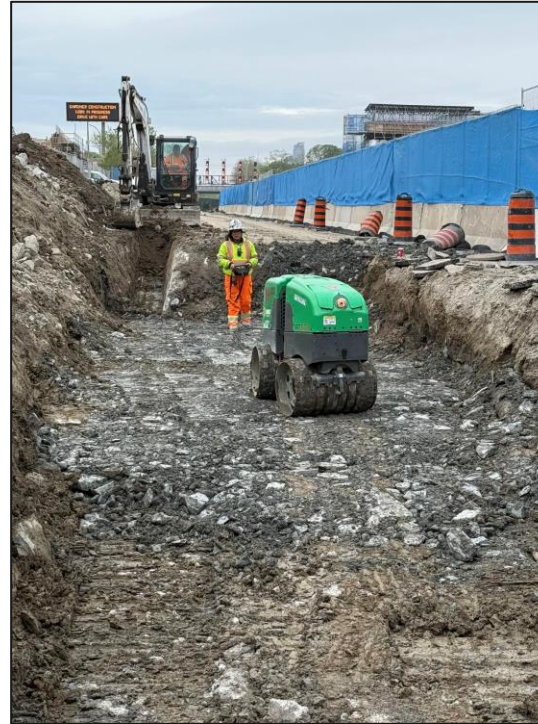
LOOKING EAST AT GRADING AND PREPARATION WORKS FOR NEW ONTARIO LINE PLATFORMS



CURRENT WORKS: FUTURE EXHIBITION STATION SOUTH MAIN ENTRY

To accommodate the future expanded Exhibition Station, crews are demolishing an existing retaining wall, south of the GO Lakeshore West rail corridor.

- The old retaining wall exists beneath the Gardiner Expressway, along the former GO eastbound platform was, prior to the platform being moved east, to its current location.
- This expanded space will allow for connection of the new south entrance of Exhibition station to the new concourse level, over the railway.



Left: Demolition and compaction activities at Exhibition. Right: Construction notice map illustrating the works area.



CURRENT WORKS: FUTURE EXHIBITION STATION NORTH MAIN STATION ENTRANCE

Foundational works, structural support and grading activities are underway in support of the new north main entrance for Exhibition Station.

- Excavation and the installation of steel struts (structural support beams) are underway.
- Utilities works are ongoing throughout the area to support the future station build.
- The first of three tower cranes is on site, with another being installed in summer, to support excavation and construction over the railway.



Structural support beams being installed to support the future north main entrance building.



LOOKING NORTHWEST AT THE NEW NORTH MAIN ENTRANCE BETWEEN ATLANTIC AVE AND JEFFERSON AVE



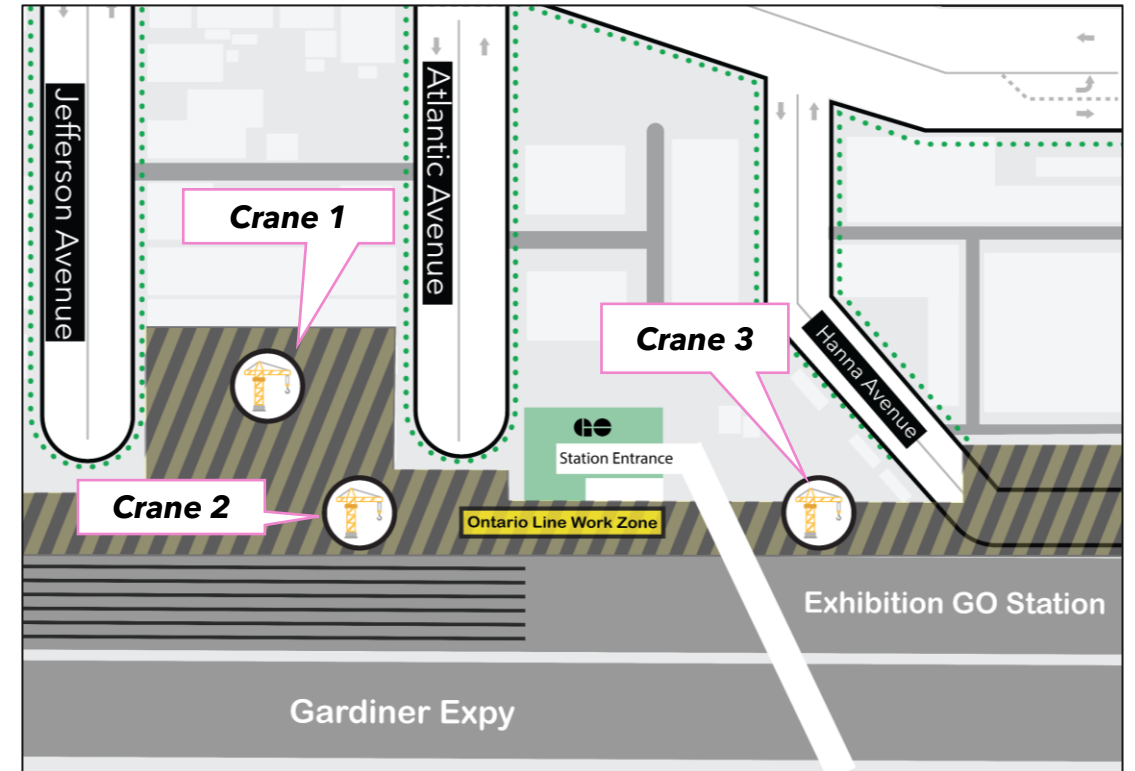


Artist's rendering – subject to change. Transit-Oriented Community proposals not shown.

UPCOMING WORKS: FUTURE EXHIBITION STATION ADDITIONAL TOWER CRANES

A total of 3 tower cranes will be installed at the Exhibition Ontario Line work zone.

- One tower is currently in place, identified on the map as 'Crane 1'.
- Through mid-summer, two more tower cranes will be installed, to assist with lifting construction materials into place.



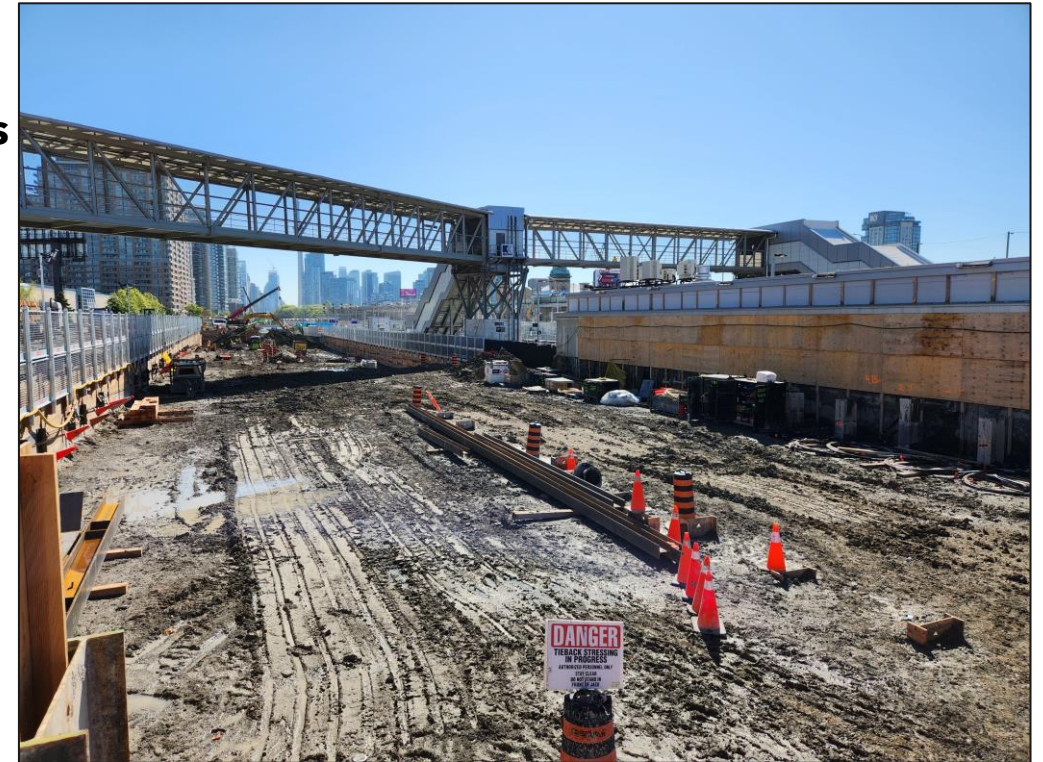
Left: Tower crane 1, in place at the north headhouse location. Right: The locations of the next two tower cranes.



CURRENT WORKS: FUTURE EXHIBITION STATION TRACTION POWER SUBSTATION (TPSS)

To the east of the new north main entrance and beneath the pedestrian bridge, grading, excavation, piling and tieback works are occurring to support the future TPSS.

- Once constructed and complete, it will exist below-grade, out of view, under the Ontario Line infrastructure.
- The TPSS is an electrical facility that converts high-voltage electricity from the utility grid to power electric Ontario Line trains, ensuring a reliable and efficient power supply for railway systems.



TPSS work underneath the pedestrian bridge at existing Exhibition station.



CURRENT WORKS: FUTURE EXHIBITION STATION ONTARIO LINE PORTAL EXCAVATION

The Ontario Line portal remains under construction, towards the east end of the Exhibition work site.

- Once complete, it will act as the entrance to the Ontario Line tunnels, for both tunnel boring machines, and eventually, subway trains.
- Grey cylindrical tubes called steel struts are being added, spanning the portal for structural support.
- Crews are excavating the portal to a depth of 20 metres, at the east end headwall.



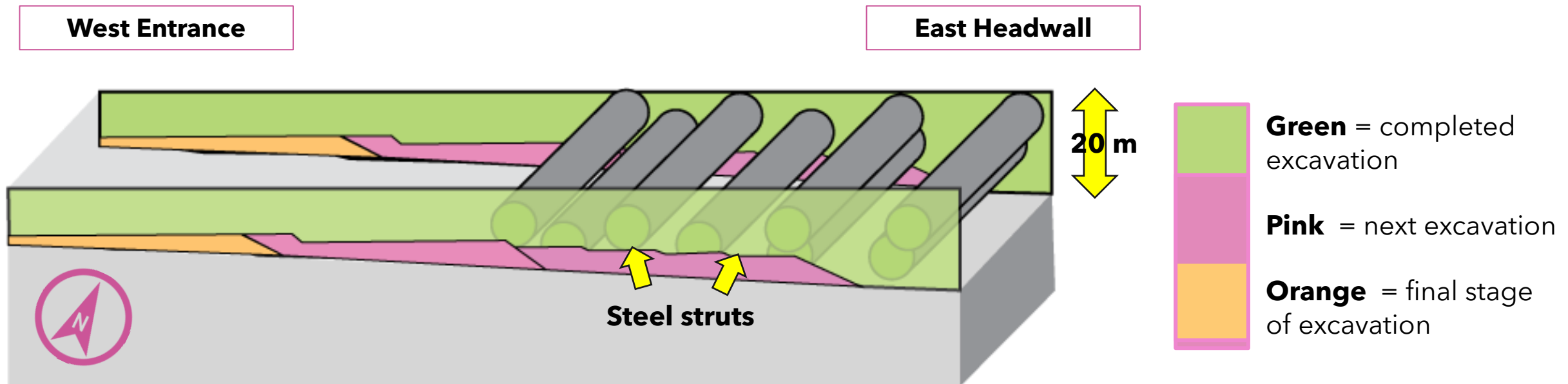
Ontario Line portal walls and steel struts, ensuring structural integrity as crews excavate.



CURRENT WORKS: FUTURE EXHIBITION STATION ONTARIO LINE PORTAL EXCAVATION

As illustrated below, crews are sequentially deepening the slope of the portal.

- Excavation occurs sequentially, with steel struts being added for support at specific levels of depth.
- The green area represents the space that has already been excavated.



LOOKING EAST FROM THE PORTAL ENTRANCE



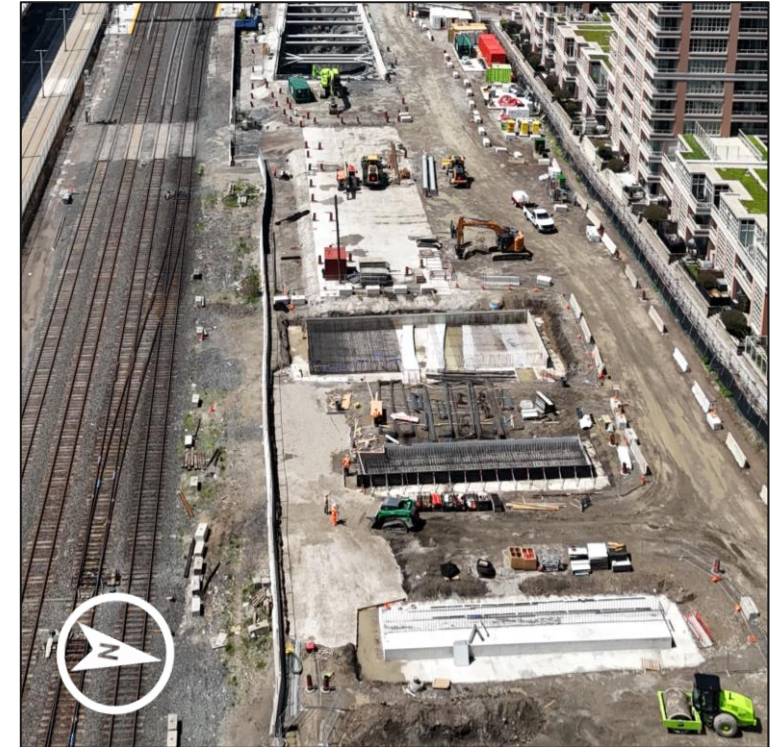
LOOKING DOWN AT THE PORTAL EXCAVATION PROGRERSS AND TRUSS INSTALLATION



CURRENT WORKS: FUTURE EXHIBITION STATION MUCK CONVEYOR SYSTEM

Crews are preparing for the construction of a muck conveyor belt system, towards the east end of the Exhibition site.

- Foundations are being poured for the future automated system, which supports tunneling operations by removing the excavated materials from the tunnels and funneling them directly into waiting dump trucks.



Left: An example of a muck conveyor to support tunneling. Right: The area at the east end of the site where foundational construction is occurring for the muck conveyor system.



CURRENT WORKS: FUTURE EXHIBITION STATION GROUT PLANT PREPARATION

Crews are preparing a grout plant, at the east end of the Exhibition site. Foundations are being poured with concrete, after rebar has been laid.

- This facility will support tunneling operations by producing materials used to secure concrete liners, inside the Ontario Line tunnels.



Left: Crews prepare the foundation of the plant, to the east of the portal. Right: An example of a grout plant, used in Vancouver, B.C.



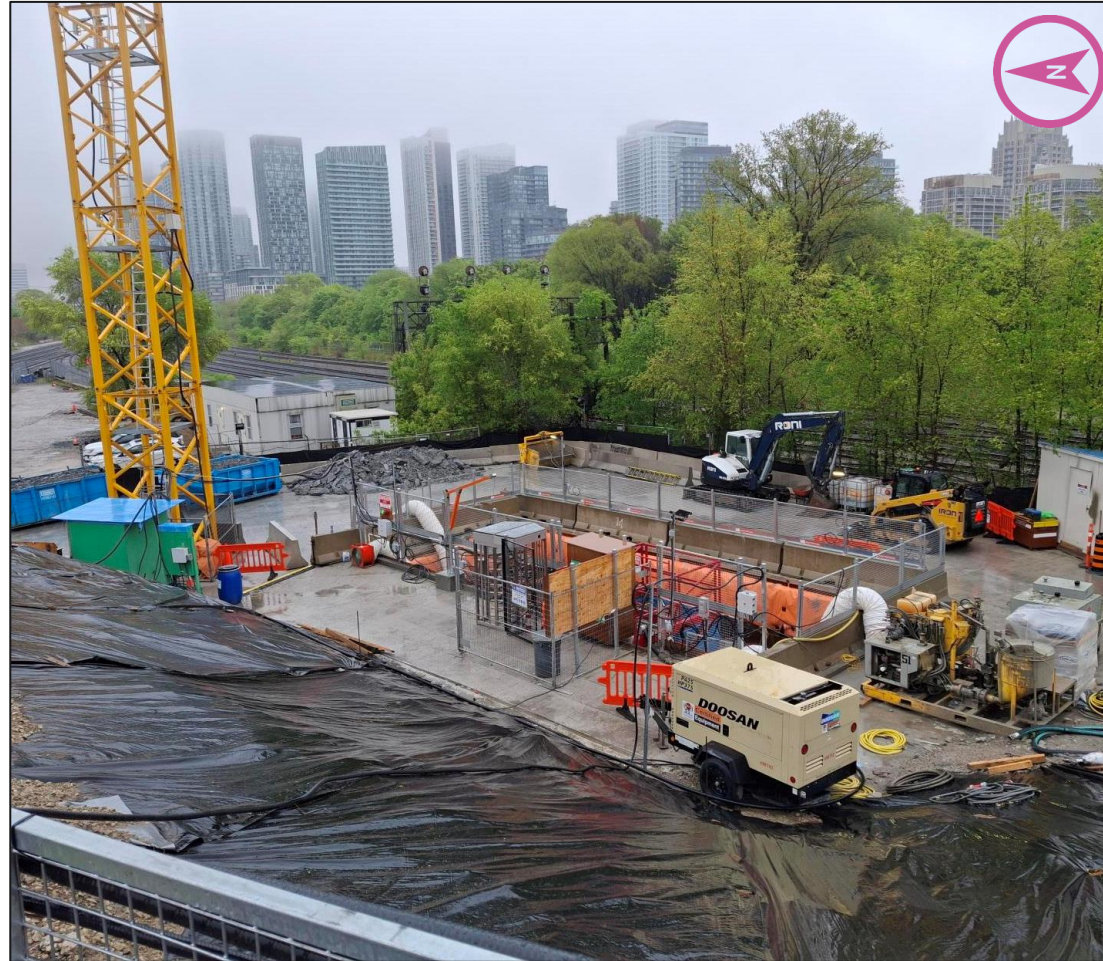
LOOKING WEST FROM THE GROUT PLANT & CONVEYOR FOUNDATION LOCATION ENTRANCE



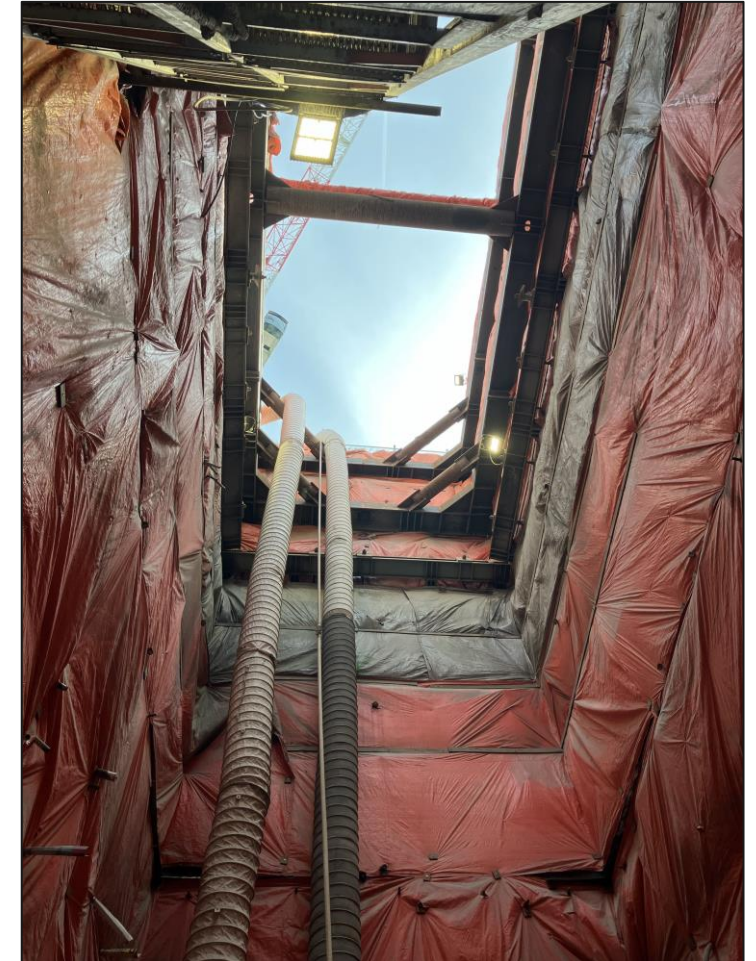
CURRENT WORKS: FUTURE ORDNANCE PARK EMERGENCY EXIT BUILDING PROGRESS

East of Liberty Village, ongoing **excavation is nearing completion at Ordinance Triangle Park**, for the future Ontario Line emergency exit building (EEB).

- Excavation efforts are reaching the final depth of 32 metres below ground.
- Later this summer, crews will begin pouring concrete and working on a new retaining wall to the east of the site.



Left: The excavated shaft will lead to an integrated EEB.



Right: A look up from the current excavated shaft

Upcoming Work

EXHIBITION EIGHT WEEK LOOKAHEAD: JUNE-JULY 2025

#	Activity	Location	Expected Start	Expected Duration	Impact	Hours of Work	Mitigations
1	Construct tower crane pad and install crane	North Platform	Ongoing. Preparation expected to wrap mid-July.	Installation expected by end of July.	Short term traffic impact during delivery. Flag personnel on site.	Mon-Fri 7am-7pm	Flag personnel on site.
2	Temporary SOE, excavation and raft	North main entrance	On-going	Late summer 2025	Noise and dust	Monday to Saturday 7am-7pm	Hoarding and fencing, street cleaning, dust control

EXHIBITION EIGHT WEEK LOOKAHEAD: JUNE-JULY 2025

#	Activity	Location	Expected Start	Expected Duration	Impact	Hours of Work	Mitigations
3	Temporary SOE	Traction Power Substation	On-going	Late summer 2025	Noise and dust	Monday to Saturday 7am-7pm	Hoarding and fencing, street cleaning, dust control
4	South headhouse, working platform Temporary SOE	South headhouse	On-going	Summer 2025	Truck access from Exhibition Place	7am-5pm and 11pm-5am	Coordination with Exhibition Place, flaggers present
5	Temporary Support of Excavation	North Platform, GO rail corridor	On-going	Period of lookahead	Noise in the rail corridor, truck access	Monday to Saturday 7am-7pm	Coordination with GO transit

EXHIBITION EIGHT WEEK LOOKAHEAD: JUNE-JULY 2025

#	Activity	Location	Expected Start	Expected Duration	Impact	Hours of Work	Mitigations
6	Island platform pile caps, staircase to tunnel, elevator pits, MEP	Island Platform, GO rail corridor	Ongoing	End of 2025	Noise in the rail corridor, truck access	Monday to Saturday 7am-7pm	Coordination with GO transit
7	Portal excavation; soft soil, walers and struts	Hanna gate to east end TPS parking lot (hoarded work zone)	Ongoing	July 2025	Noise and dust	Monday to Saturday 7am-7pm	Hoarding and fencing, street cleaning, dust control
8	Portal excavation rock-breaking, walers and struts	Hanna gate to east end TPS parking lot (hoarded work zone)	Ongoing	July 2025	Noise and dust	Monday to Saturday 7am-7pm	Hoarding and fencing, street cleaning, dust control

KEEPING YOU INFORMED

Metrolinx will keep the community, residents and businesses informed by providing project updates, seeking input and feedback, while addressing questions and concerns effectively and quickly.

Connect with us:

Email: OntarioLine@metrolinx.com

Telephone 24/7 @ 416-202-5100

Follow us on social media:

Twitter / Facebook / Instagram: @OntarioLine



*Scan here to sign up
for the Ontario Line
e-newsletter*



*Scan here to explore
Ontario Line CLC
documents*





Artist's rendering – subject to change. Transit-Oriented Community proposals not shown.

Ontario Line



Have your say: name the first two Ontario Line tunnel boring machines

Be part of transit history!

The first two tunnel boring machines have arrived in Canada, and we need your help to name them. These titans of tunnelling will dig the tunnels in the southern – or downtown – portion of the Ontario Line between just east of Exhibition Station and just west of the Don River.

View the contest details and have your say on
metrolinx.com/NameOurTBMs



 metrolinx.com/ontarioline
 ontarioline@metrolinx.com

   @OntarioLine
 416-202-5100

