

Start of Excavation at King-Bathurst

July 2024

Work will continue at both sites during the day. With additional work as follows:

Overnight work at north site will be required July 15 to 31, 2024 to install and assemble the crane. An overnight shift from 7:00 p.m. to 7:00 a.m. will be added to complete this installation.

August 2024: Start of Excavation

North site: Weekdays from 7:00 a.m. to 11:00 p.m.* South site: Weekdays 7:00 a.m.-7:00 p.m.

*The constructor may not always work extended hours. Occasional weekend overnight shifts may be required and notice will be provided.

Phase one excavation expected completion: December 2024

JOIN US FOR A KING BATHURST VIRTUAL OPEN HOUSE JULY 11, 2024

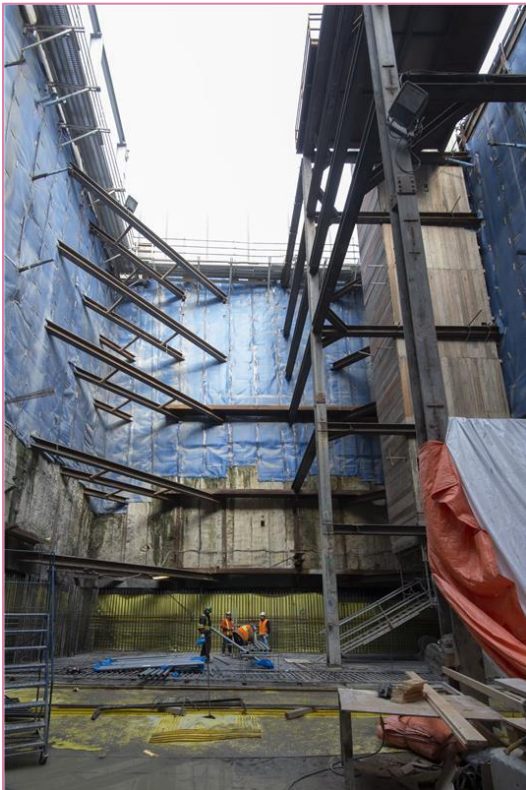
For more information about the Ontario Line construction happening at King-Bathurst, Metrolinx and the Ontario Line constructor, Ontario Transit Group, welcome you to a Virtual Open House on July 11, 2024, from 7:00 p.m. to 8:00 p.m. ET.

Please register at metrolinx.com/ontarioline and click on **Events** for details or scan the QR code to the right:



What is station excavation?

- The support piles needed to stabilize the site have been installed. Now, the crew will begin excavating the soil and bedrock to a depth of 40 metres. As spoils are removed, a shaft will be created to lower materials into the pit for the future Ontario Line station at King-Bathurst.
- The preparation and excavation process will commence in July 2024 and a first phase of excavation work will run through the end of 2024.
- Work hours will vary based on the type of construction, with the primary work hours for excavation taking place between 7:00 a.m. and 11:00 p.m. on weekdays, and 7:00 a.m. to 5:00 p.m. on Saturdays.
- Residents will see cranes, excavators, loaders, and dump trucks on-site during this phase of work.
- Increased truck traffic will enter and leave worksites daily, following specified routes (refer to graphic below).
- There will be construction noise from the use of excavators and loaders for the removal of spoils.
- To reduce impacts to residents and businesses in the area, mitigations are in place including air quality, noise and vibration monitoring, site hoarding, additional paved areas, sprinkler systems and mud mats for dust suppression, and no overnight works.



work that will occur at King-Bathurst

Acoustic shelter at north site

- Crews will be installing an acoustic shelter over the excavation shaft at the north station site.
- The acoustic shelter will cover the shaft excavation for the future King-Bathurst Station. The shelter structure will reduce noise and minimize dirt and dust from the work site, while allowing crews to work year-round without being affected by the weather.
- Work to install the shelter will take place during daytime hours.

Crane delivery and assembly

North site: Overnight works July 15-31

- Crews will deliver and install an overhead crane to the site on the northeast corner. Delivery of the crane will take place in the early morning as it requires traffic control persons to safely guide the oversize delivery.
- The crane will be housed within an acoustic shelter and sit above the excavation.
- This type of crane can move back and forth on girders within the construction site, allowing it to load materials and deliver them to precise locations within the station site at that location.
- The overhead crane will be assembled using a smaller mobile crane during the overnight period over a period of approximately two weeks.
- The work has been sequenced to minimize noise in the overnight period and assemble the crane and shed in as little time as possible.

South Site

- Crews will deliver a tower crane to the site on the northeast corner. Delivery of the crane will take place in the early morning as it requires traffic control persons to safely guide the oversize delivery.
- Delivery of the crane is expected to occur in late summer 2024.

About the Ontario Line

- 15.6-kilometre subway line that will make it faster and easier to travel within Toronto and beyond.
- 15 stops and more than 40 connections to other transit, including GO train, subway, LRT, streetcar, and bus lines.
- Less than 30 minutes from one end of the line to the other.
- 28,000 fewer cars on the road each day.
- For more information about upcoming station work please see metrolinx.com/Ontarioline or sign up for the e-newsletter.

Contact us:

Call us 24/7 at: [416-202-5100](tel:416-202-5100)

Write to us at: ontarioline@metrolinx.com

Find us on X, Facebook, and Instagram: [@ontarioline](https://www.instagram.com/ontarioline)

Visit the website: www.metrolinx.com/ontarioline

Visit our community offices:

770 Queen Street East (near Queen & Broadview)

General hours:

Mondays, Tuesdays, and Fridays: 9:00 a.m. to 5:00 p.m.

Wednesdays and Thursdays: 10:00 a.m. to 6:00 p.m.

Thorncliffe Park:

East York Town Centre

45 Overlea Blvd., Toronto, ON M4H 1C3

Unit 153 (across from the Rogers store)

General hours:

Monday - Friday, 9 a.m. - 5 p.m.