

# Building Demolition Works on Simcoe Street

As early as August 18<sup>th</sup>, 2025 – December 24<sup>th</sup>, 2025  
Monday to Friday, 7:00AM – 5:00PM

## Project Overview

The Bowmanville Extension will extend Lakeshore East GO rail service nearly 20-kilometres east of the Durham College Oshawa GO Station to Bowmanville, serving the Region of Durham. Expanded rail service will provide the Durham Region with direct connections to the larger GO Transit network, helping to reduce congestion in the Greater Golden Horseshoe while better connecting customers to education, family, entertainment, and jobs.

## What is happening?

Beginning as early as August 18<sup>th</sup>, 2025, Delsan AIM Environmental Services will begin demolition activities (demolition and removal) at the following properties on Simcoe Street:

- Building - Two-Storey Desjardin, 399 Simcoe St S, Oshawa, ON L1H 4J5
- Building - Tim Hortons, 415 Simcoe St S, Oshawa, ON L1H 4J5
- Building - All Canadian Awards, 424 Simcoe St S, Oshawa, ON L1H 4J6
- Building - Pets Kingdom, 426 Simcoe St S, Oshawa, ON L1H 4J6
- Building - Two-Storey Multiplex, 428 Simcoe St S, Oshawa, ON L1H 4J6



415 SIMCOE ST. SOUTH



424-426-428 SIMCOE ST. SOUTH



399 SIMCOE ST. SOUTH

Figure 1 Building Demolition Overview

## HOURS OF WORK

- Work will take place Monday to Friday, between 7:00 a.m. and 5:00 p.m.
- Work hours may be extended or rescheduled due to inclement weather, unforeseen circumstances or to advance work.

## WHAT TO EXPECT

- Residents should expect some noise, and vibration due to construction activities.
  - Site lighting may be utilized if necessary and will be pointed away from homes.
- Staff will take reasonable precautions to minimize disturbances to residents and commuters, including but not limited to the following:
  - Reduced idling of non-essential equipment.
  - Safely securing the work area.
  - White noise backup alarms on vehicles and machinery as required.
  - Safety signage will be in place, and crews will follow all applicable safety and environmental guidelines.
  - Restoration of all areas affected by the demolition will be undertaken. Temporary fencing will be installed upon completion of the work.

## PEDESTRIAN DETAILS

- Sidewalk closures will be in place during the front facade demolition. During which time pedestrian traffic will be re-routed onto the curb lane safely.
- Traffic Control Persons will be in the area during the sidewalk closure to assist and ensure pedestrian safety.

## TRAFFIC AND TRANSIT DETAILS

- Short-term lane closures will be carried out daily, as deemed necessary to support construction activities. There are no anticipated road closures.
- Transit will not be impacted.

## OTHER INFORMATION

- Metrolinx has a dedicated community engagement team that collaborates with residents and businesses in the area.
- If you have any questions, please contact us using the information provided below. We apologize for any inconvenience and ask for your patience as we complete this critical work.

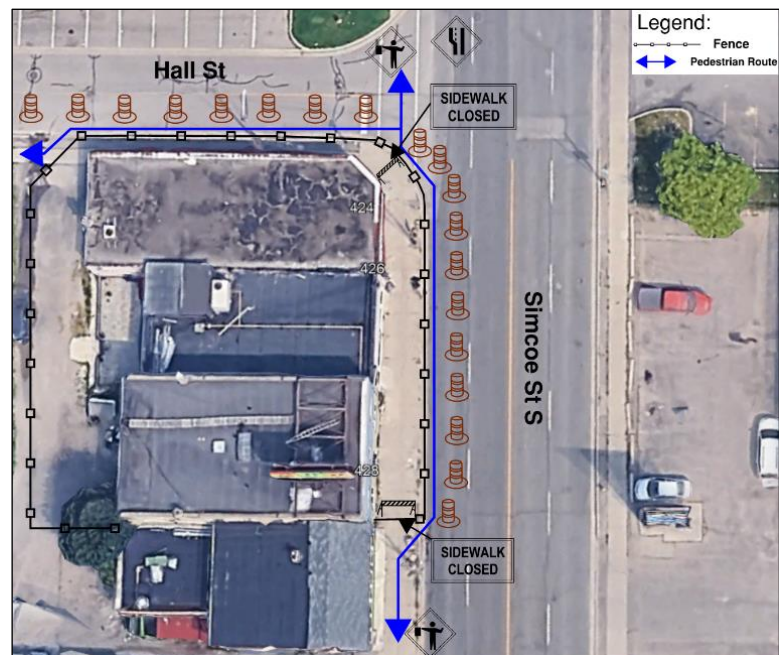


Figure 2 Sidewalk Closure and Detour Route

This notice can be translated into a different language upon request by emailing us at [DurhamRegion@metrolinx.com](mailto:DurhamRegion@metrolinx.com)

Cet avis est disponible en français sur demande. Si vous êtes intéressé, veuillez envoyer un courriel à [DurhamRegion@metrolinx.com](mailto:DurhamRegion@metrolinx.com)

### Contact Us:

✉ Write to us at: [DurhamRegion@metrolinx.com](mailto:DurhamRegion@metrolinx.com)

✂ Find us on X: [@GOExpansion](https://twitter.com/GOExpansion)

• Visit the website: [www.metrolinx.com/projects-and-programs/go-expansion](http://www.metrolinx.com/projects-and-programs/go-expansion)

• Subscribe to our e-blast: [www.metrolinx.com/subscribe](http://www.metrolinx.com/subscribe)