

Ontario Line

# Queen Station Construction Liaison Committee

June 10, 2025



# Agenda

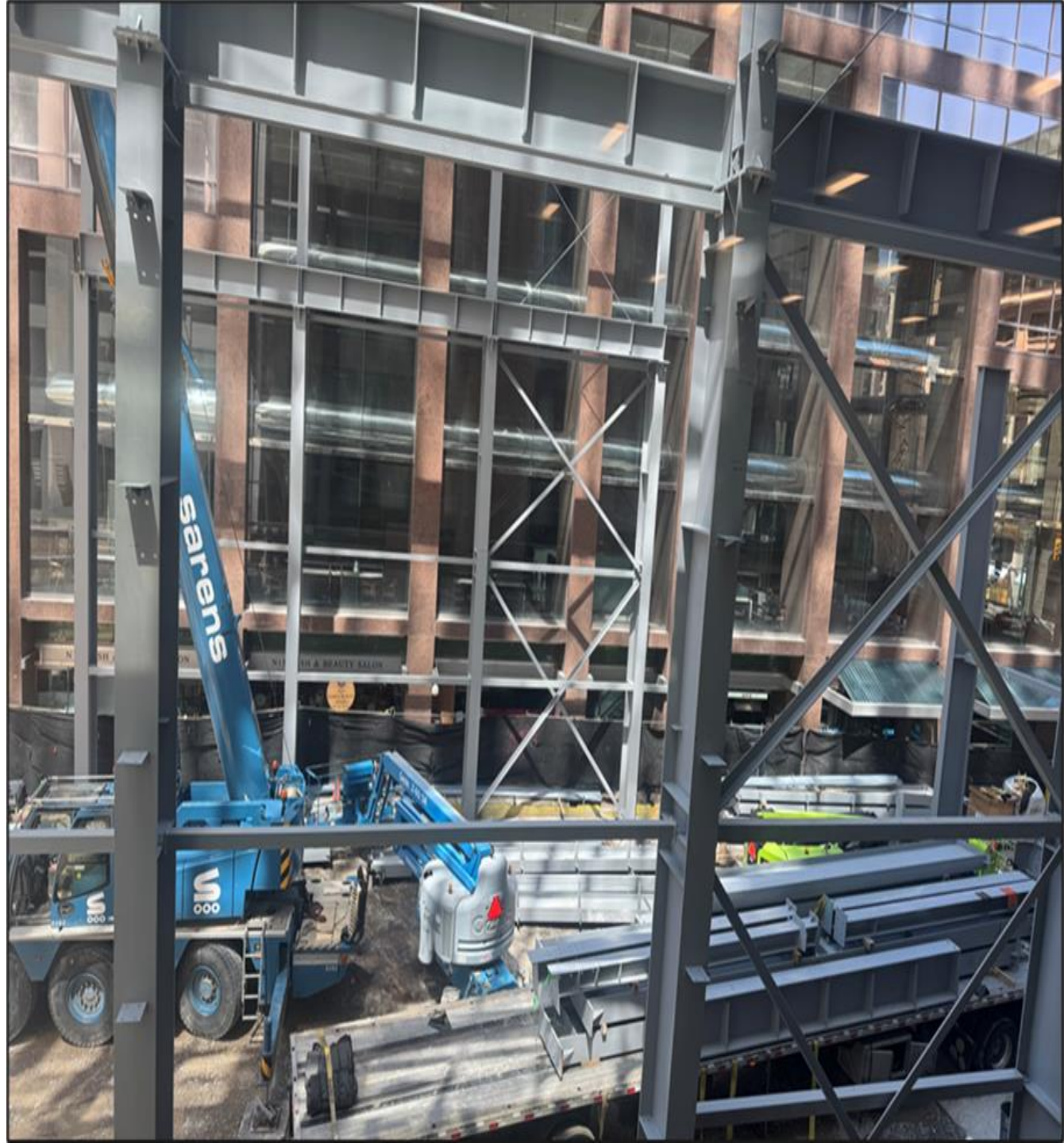
## Welcome (5 min)

- Introductions
- Land Acknowledgment
- Session Guidelines
- Safety Moment

## Presentation (25 min)

- Construction Updates
- Upcoming Work
- Truck Safety Plan

## Q/A and discussion (30 min)



# LAND ACKNOWLEDGEMENT

---

Metrolinx acknowledges that we connect communities by building and operating transit within the traditional lands of the Anishinaabe, the Haudenosaunee and the Huron-Wendat peoples, for whom these lands continue to have great importance.

Treaties between First Nations and governments cover these lands, and the promises contained in these Treaties remain relevant to this day.

Metrolinx and its employees are committed to understanding the history of these lands and the continued impacts of colonization and take responsibility for actions to advance reconciliation.

Metrolinx will continue to seek the knowledge, expertise and experience of Indigenous partners and commits to doing business in a manner that is built on a foundation of trust, respect, and collaboration.

# Session Guidelines

We greatly appreciate the community members who are here to take part in this public session.

To ensure that everyone can contribute to a positive and safe community experience, all participants shall adhere to the following *Code of Conduct*:

- Treat the presenters and participants with respect and understanding
- Acknowledge and appreciate the diversity of individuals and their situations
- Refrain from supporting or engaging in any form of discriminatory behaviour

**Metrolinx is committed to fostering a safe and respectful environment.**

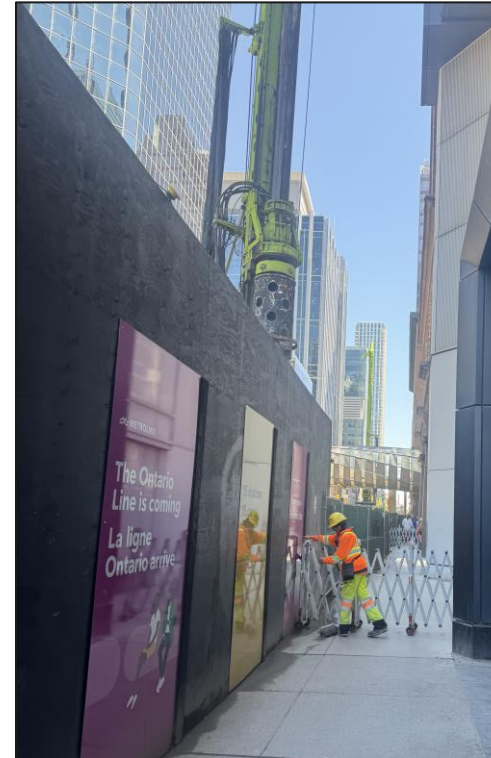
**We encourage respectful and constructive communication.**

## SAFETY MOMENT - AROUND EXCAVATION ZONES

**Our construction project has entered the excavation phase, which means increased heavy equipment activity and deeper work zones.**

Please stay alert and follow these safety reminders when walking near the site:

- **Use designated pedestrian routes.**  
Excavation zones are fenced off for your protection. Please don't cross into restricted areas.
- **Stay clear of machinery.**  
Excavators, dump trucks, and drilling rigs have limited visibility. Avoid standing near site access points.
- **Watch for changes in sidewalk routes.**  
As excavation progresses, pedestrian detours may shift. Follow posted signage and flag persons.
- **Keep children and pets safe.**  
The open nature of excavation can look interesting. Remind little ones to stay close and never approach work zones.



Pedestrian access managed to ensure safety at the future Queen station sites



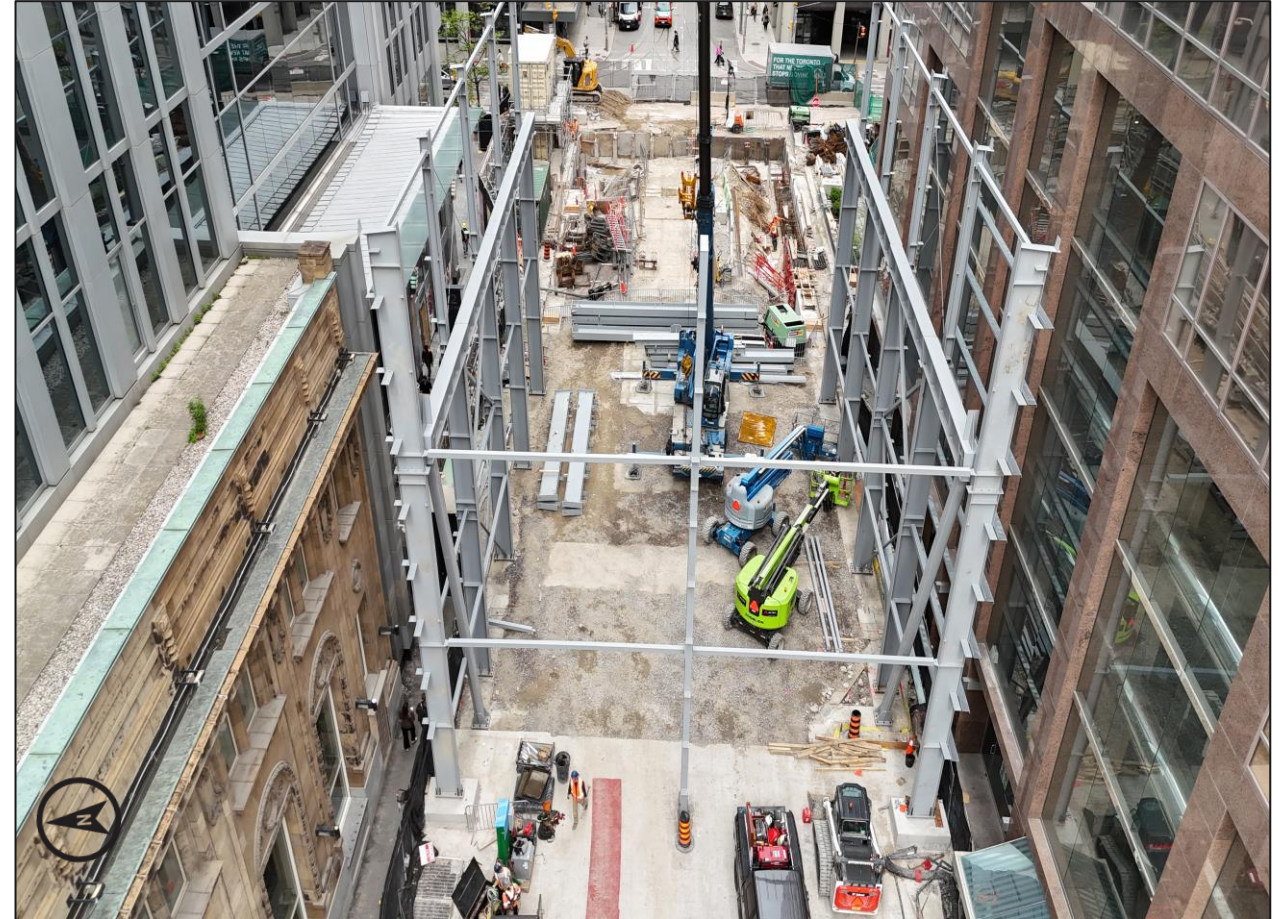
Safety signs alert public to the work zone at the future Queen station

# Queen Station Construction Update



## CURRENT WORKS: FUTURE QUEEN STATION EAST SITE

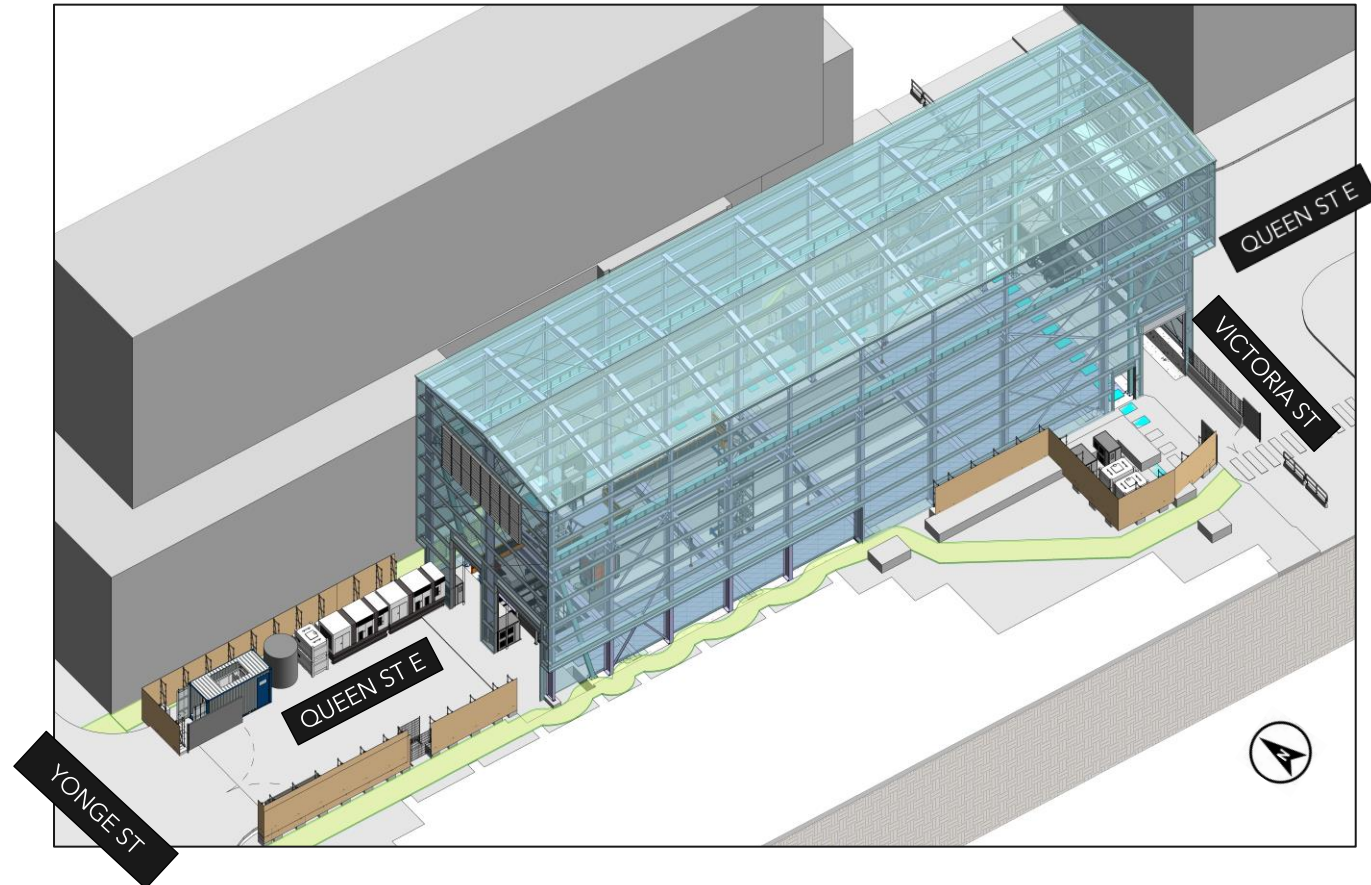
- First phase of capping beam completed in May 2025; additional capping beam work is ongoing.
- Additional work for connection of temporary power for construction completed
- Excavation has started. The first struts were installed.
- Work is underway to build the future acoustic shelter and a crane has been delivered.



*Installation of structural steel for the future acoustic shelter is underway at the Queen east site*

## UPCOMING WORK: FUTURE QUEEN STATION EAST SITE

- Acoustic shelter installation is ongoing at the east site at Queen Station. The structural frame is ongoing will be followed by cladding.
- An overhead crane will be installed inside of the shelter to facilitate future work.
- Future phases of work at this site will take place primarily inside of the shelter.
- The shelter is expected to reduce noise and minimize dirt and dust from the work site. It will also allow crews to work extended hours without being affected by the weather.
- Portion of the south and north sidewalk on Queen Street East (between Yonge Street and Victoria Street) are expected to be closed during installation.



*Diagram of the future acoustic shelter will be installed at the east site of Queen Station.*

# AERIAL VIEW OF THE FUTURE QUEEN STATION EAST SITE



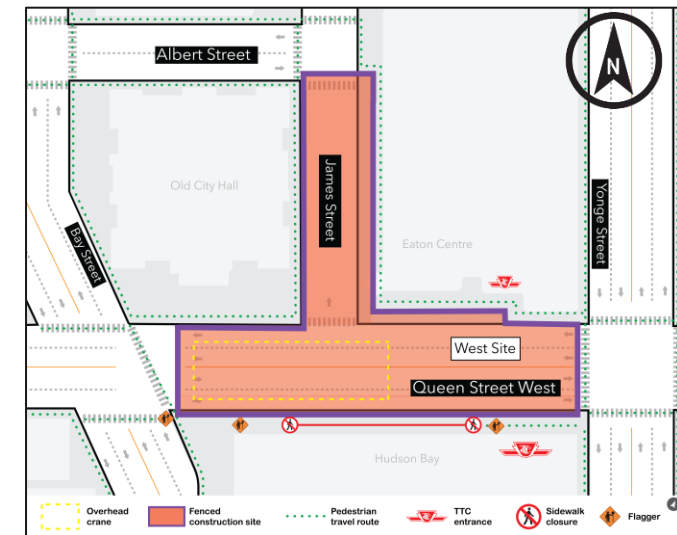
## CURRENT WORKS: FUTURE QUEEN STATION WEST SITE

- Micropiling is completed and Piling for ventilation shaft and the section between the footbridge and the TTC station will continue throughout June 2025.
- Temporary watermain installation is complete; connections and final commissioning is expected to continue through June 2025.
- Piling platform construction is ongoing and expected to be complete later this month.
- The capping beam installation is ongoing and expected to continue through end of June 2025 to accommodate the elevated structure.
- Installation of the elevated structure is expected to start in June 2025. This work will include delivery of oversized materials and equipment throughout the month, as well as an intermittent sidewalk closure on Queen Street west.
- Notice link [here](#).



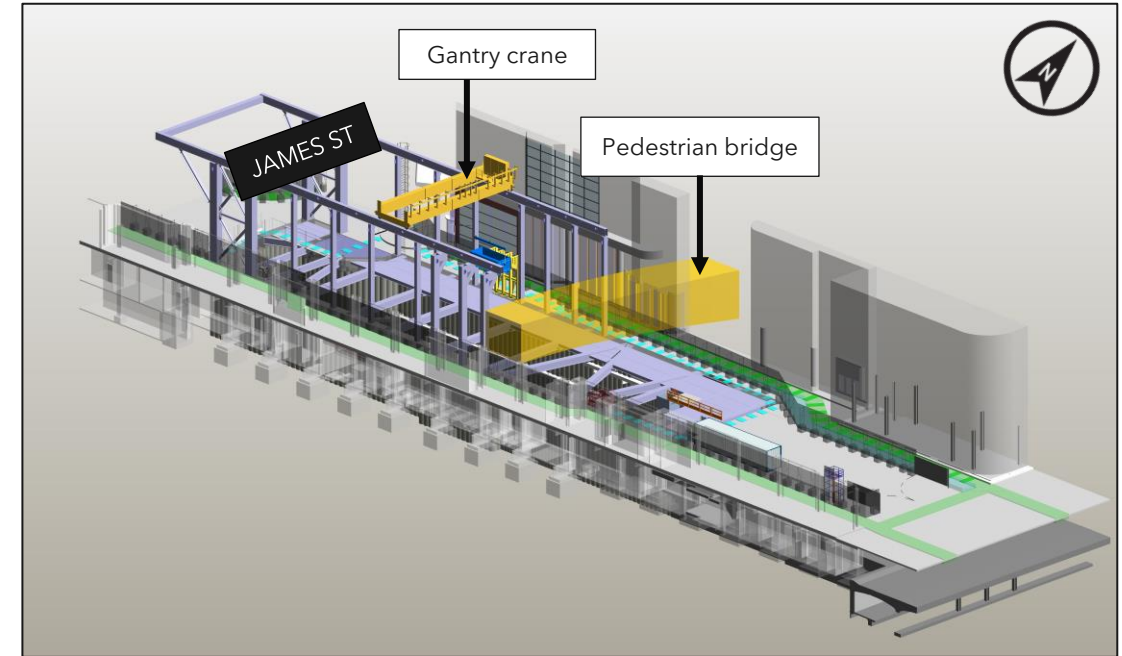
*Piling platform at the Queen west station site*

*Expected sidewalk closure on Queen Street West*



## UPCOMING WORKS: FUTURE QUEEN STATION WEST SITE

- Excavation preparation work is ongoing.
- To prepare for excavation, a crane will be installed at the site.
- This type of crane will be fixed to a permanent elevated base structure, allowing the crane to move on girders back and forth across the construction site, loading materials and delivering them to precise locations; in this case, above the future excavation shaft.
- The installation is expected to commence in June 2025. Work will include assembly and installation of beams, a trolley and ultimately the crane.
- Some welding will take place on-site as part of the overhead crane assembly.
- The crane will be tested for final commissioning prior to becoming fully operational.



*Diagram of the future elevated structure to be installed to support the excavation work at the west site*

## PILING MACHINES AT THE QUEEN STATION WEST SITE



# Upcoming Work

# EIGHT WEEK LOOK-AHEAD - QUEEN EAST : June 10 – July 31, 2025

#	Activity	Expected Start	Expected Duration	Impact	Hours of Work	Mitigations
1	Excavation preparation, installation of acoustic shelter + gantry crane	June 2, 2025	2 months	Vibration, noise, air quality, sidewalk closures, temporary lane closures	7:00 a.m. to 11:00 p.m. (Monday to Friday with some Saturdays)	Noise wall, hoarding. Dust mitigation includes misting, sweeping. Erosion and sediment control.
2	Excavation (soft soil)	End of June	4 months	Vibration, noise, air quality	7:00 a.m. to 11:00 p.m. (Monday to Friday with some Saturdays)	Noise wall, hoarding. Dust mitigation includes misting, sweeping. Erosion and sediment control.

\*Note: All dates and times are subject to change as construction planning progresses

# EIGHT WEEK LOOK-AHEAD QUEEN WEST: June 10 – July 31, 2025

#	Activity	Expected Start	Expected Duration	Impact	Hours of Work	Mitigations
1	Construction piling	Started/ongoing	1-2 weeks	Vibration, noise, air quality, sidewalk closures	7:00 a.m. to 11:00 p.m. (Monday to Friday with some Saturdays)	Noise wall, hoarding. Dust mitigation includes misting, sweeping. Erosion and sediment control.
2	Elevated structure	Mid-June	4 weeks	Vibration, noise, air quality, sidewalk closures	7:00 a.m. to 11:00 p.m. (Monday to Friday with some Saturdays)	Noise wall, hoarding. Dust mitigation includes misting, sweeping. Erosion and sediment control.
3	Excavation (soft soil)	July 21	3 months	Vibration, noise, air quality	7:00 a.m. to 11:00 p.m. (Monday to Friday with some Saturdays)	Noise wall, hoarding. Dust mitigation includes misting, sweeping. Erosion and sediment control

\*Note: All dates and times are subject to change as construction planning progresses

# 2025 CONSTRUCTION LOOK-AHEAD

Timing	Activity	Location	Details and Purpose
Spring/Summer	Ongoing Piling + Capping Beam +Utilities + Elevated structure	West site - within the site and along designated haul routes	Deep foundation work supports heavy structures by transferring loads to stable ground below the surface. Drilling rig machinery and hydrovac trucks will be utilized to complete this work.
Summer/Fall	Acoustic shelter + east and west shaft excavation (soil and rock)	East site - within the site and along designated haul routes. West site - within the site and along designated haul routes.	Removing large volumes of material from the station shaft to build a new subway cavern and tunnel underground. Dump trucks and various excavators will be used to complete this work.
Winter 2025/2026	Cavern excavation	Within the site and along designated haul routes.	Removing large volumes of material to build a new subway cavern and tunnel underground. Dump trucks and various excavators will be used to complete this work.

\*Note: All dates and times are subject to change as construction planning progresses

# Truck Safety Plan

# TRUCK SAFETY PLAN Objectives

To ensure the safe and efficient movement of construction traffic Metrolinx developed the Truck Safety Plan (TSP) to provide clear targets that guide every decision and action. The following objectives form the foundation of the plan.

- 1. Prioritize public safety**
- 2. Minimize community impacts**
- 3. Ensure regulatory compliance**
- 4. Support operational efficiency**
- 5. Promote transparency and accountability**

# Truck Route Safety Plan Overview

Key considerations used for the selection of truck routes include: Regulatory compliance, road suitability and traffic operations, Community impacts and route Flexibility.

This plan includes criteria and measures to ensure safe and efficient movement of trucks by developing designated routes for each site in collaboration with the City and local stakeholders, including provisions for monitoring compliance and enforcement of routes. When it is not feasible to conform completely to key considerations, mitigations reduce community disturbances. These mitigations include, traffic control measures, driver awareness and education, noise and emissions reduction, time of day restrictions, staging and holding areas, targeted enforcement.

## **Monitoring Compliance**

Metrolinx is committed to developing and implementing truck routes that prioritize public safety, respect local communities, and support efficient construction operations. This is done through effort such as driver education, inspections, and public input.

## **Enforcement and Incident Response**

Enforcement and incident response protocols are embedded within the TSP. These protocols reinforce a culture of accountability and safety.

## **For more information**

Please visit the Metrolinx website [here](#), for our Truck Safety Plan frequently asked questions.

If you have any questions or concerns regarding truck routes, please call our 24-hour hotline at 416-202-5100 or email us at [ontarioline@metrolinx.com](mailto:ontarioline@metrolinx.com)

# Queen Station Truck Routes

Please note that the truck routes and volumes outlined are subject to change.



# Discussion

## KEEPING YOU INFORMED

**Metrolinx will keep the community, residents and businesses informed by providing project updates, seeking input and feedback, while addressing questions and concerns effectively and quickly.**

### **Connect with us:**

- Julia Orsini, Community Engagement Advisor
- Ross Andersen, Senior Advisor, Community Engagement

Email: [OntarioLine@metrolinx.com](mailto:OntarioLine@metrolinx.com)

Telephone 24/7 @ 416-202-5100

***Next CLC: July 8, 2025***

### **Follow us on social media:**

Twitter / Facebook / Instagram: @OntarioLine



*Scan here to sign up  
for the Ontario Line  
e-newsletter*



*Scan here to explore  
Ontario Line CLC  
documents*

