

Ontario Line

Exhibition Construction Liaison Committee

January 28, 2026



Agenda

Welcome (5 minutes)

- Introductions
- Land Acknowledgement

Conversation (30 minutes)

- Safety Moment
- Construction Update
- Upcoming Work
- Discussion

Q/A and Discussion (25 minutes)

VIEW OF TUNNEL BORING MACHINE CUTTERHEAD IN STORAGE





LAND ACKNOWLEDGEMENT

Metrolinx acknowledges that we connect communities by building and operating transit within the traditional lands of the Anishinaabe, the Haudenosaunee and the Wendat peoples, for whom these lands continue to have great importance.

Treaties between First Nations and governments cover these lands, and the promises contained in these Treaties remain relevant to this day.

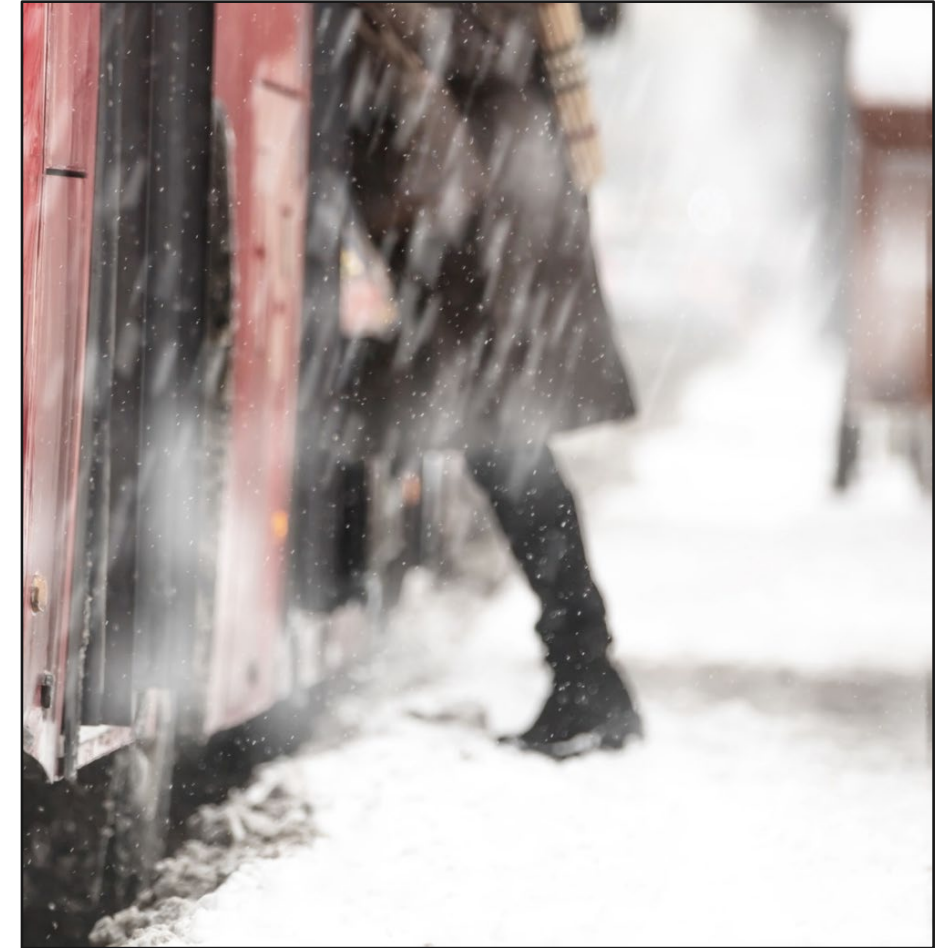
Metrolinx and its employees are committed to understanding the history of these lands and the continued impacts of colonization and take responsibility for actions to advance reconciliation.

Metrolinx will continue to seek the knowledge, expertise and experience of Indigenous partners and commits to doing business in a manner that is built on a foundation of trust, respect, and collaboration.

SAFETY MOMENT - NAVIGATING THROUGH THE WINTER SEASON

As winter sets in, here's how to ensure a safe commute around Exhibition Station

- **Keep sidewalks clear and accessible**
Our team ensures pedestrian pathways around the site remain clear of snow and ice. Please follow posted detour routes for your safety.
- **Watch for changing conditions**
Winter weather can make surfaces slippery. Wear proper footwear and stay alert near construction areas.
- **Maintain visibility**
With shorter daylight hours, lighting is in place. Be mindful of marked crosswalks and pedestrian signals.
- **Respect construction barriers**
Barriers are set up to protect you. Avoid cutting through restricted areas for your safety and ours.
- **Be patient with delays**
Winter conditions may impact movement at site, specifically at entry and exit gates. Ensure you follow directions by the flag persons when in these areas to ensure a safe crossing



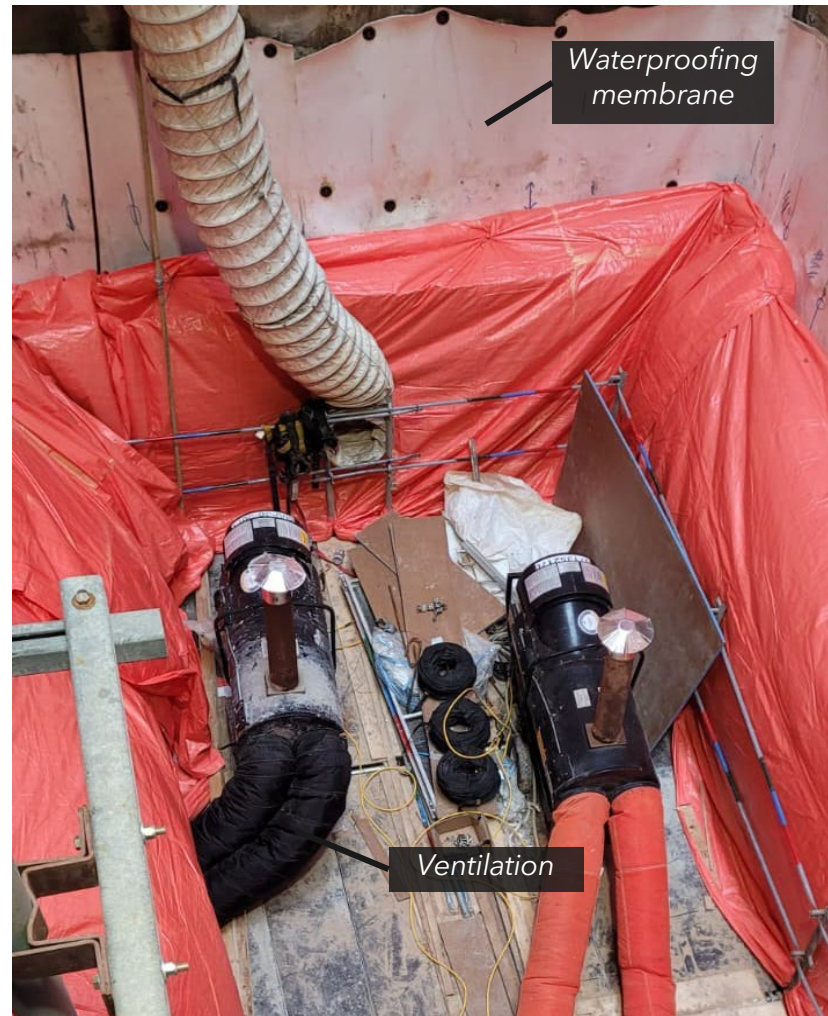
Exhibition and Ordnance Park Construction Update



CURRENT WORK: FUTURE ORDNANCE PARK EMERGENCY EXIT BUILDING PROGRESS

Crews have started permanent works at Ordnance Triangle Park for the future **Ontario Line emergency exit building (EEB)**. The work includes rebar installation, framework, and pouring concrete.

Fun fact! **555 metric tonnes** of rebar has been installed at Ordnance Park EEB. That's about 1,000 times heavier than a grizzly bear!



Looking down the shaft waterproofing and ventilation.



Looking up the shaft at the rebar installation.

VIEW OF THE FUTURE NORTH STATION ENTRANCE



Tower crane

Station platforms

North station entrance shaft

Concrete pump

Waterproofing installation

Concrete wall pour

Rebar installation



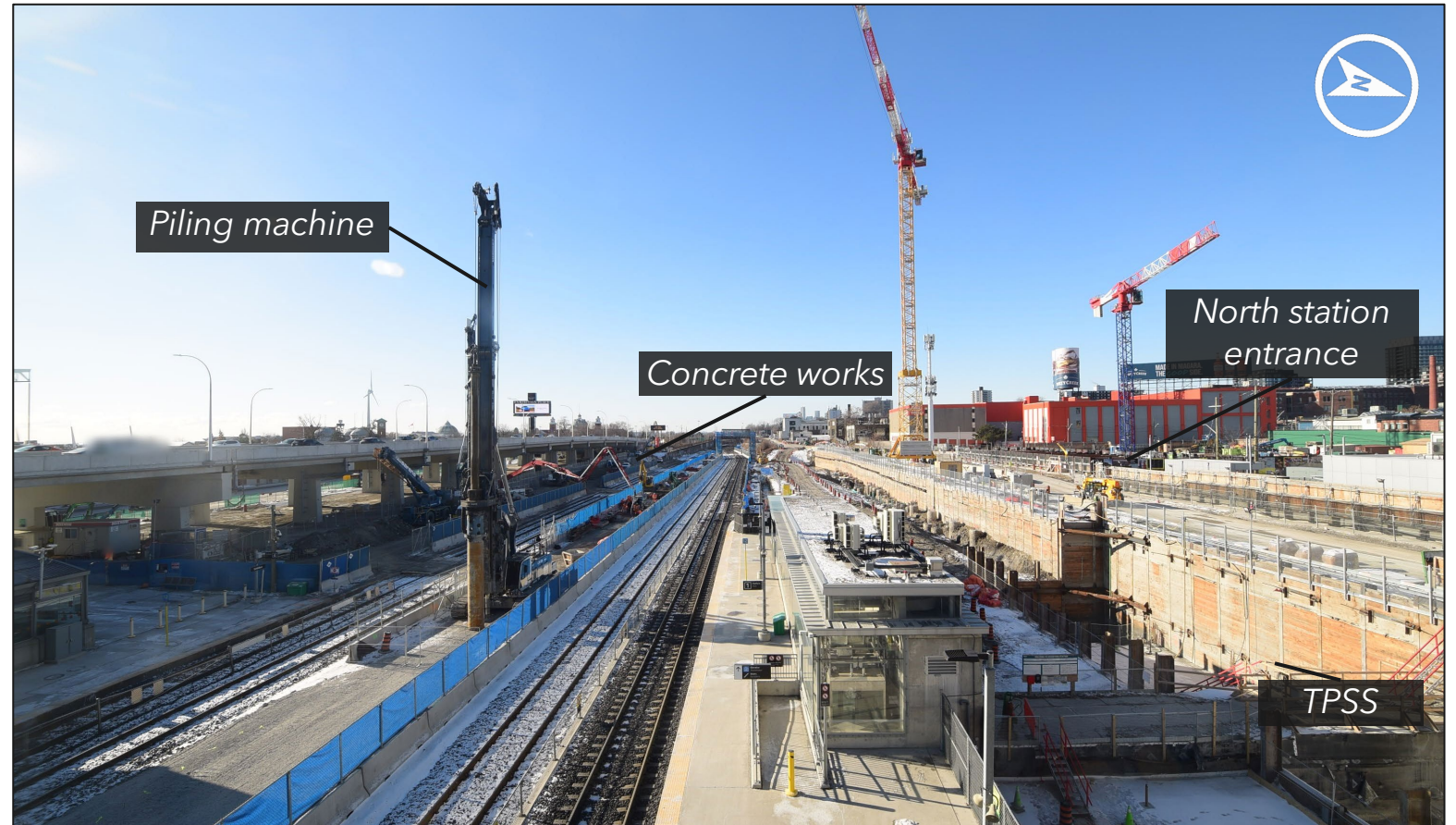
CURRENT WORK: FUTURE EXHIBITION STATION WEST SIDE

Construction is underway to create the new foundations and shared passenger platforms at Exhibition Station.

- Includes foundation and structural support, concrete works, waterproofing, rebar and excavation.
- Crews completed bulk piling at all station platforms at the start of January 2026.

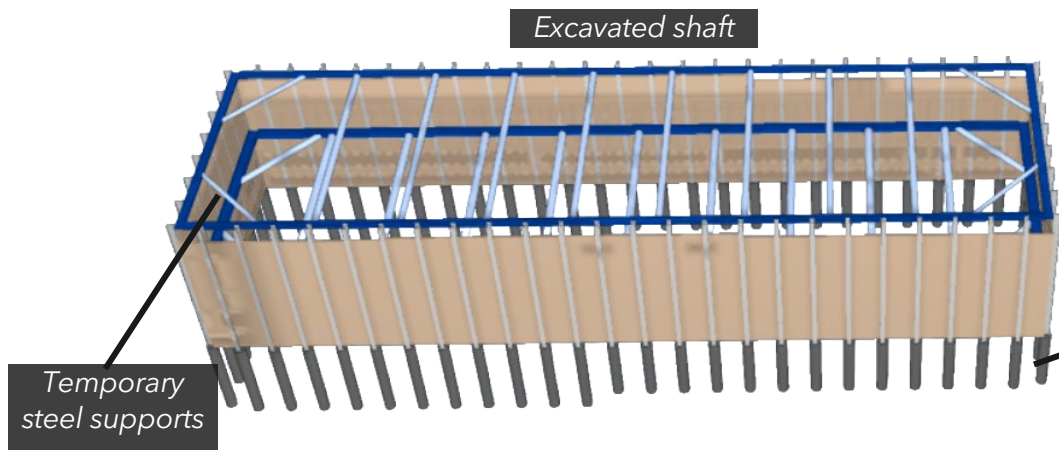
Foundational work and structural support is underway at the future north station entrance.

- Includes waterproofing, rebar installations and concrete works.

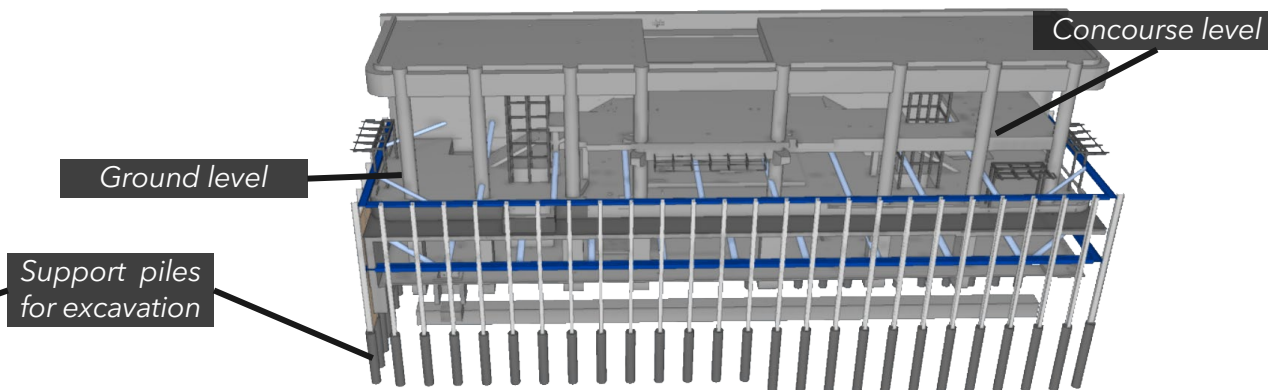


A view of the various platform works at Exhibition, including piling and concrete works.

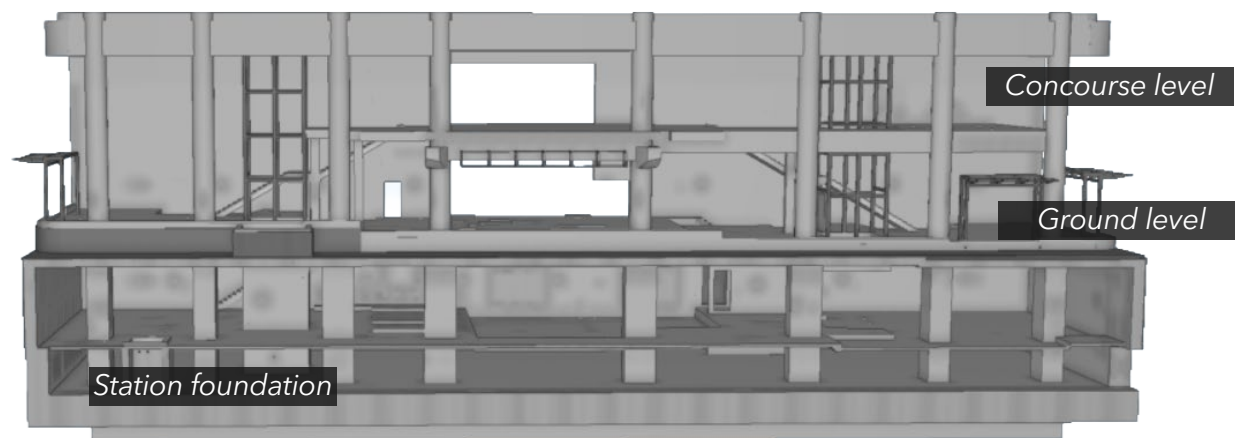
CURRENT NORTH STATION ENTRANCE



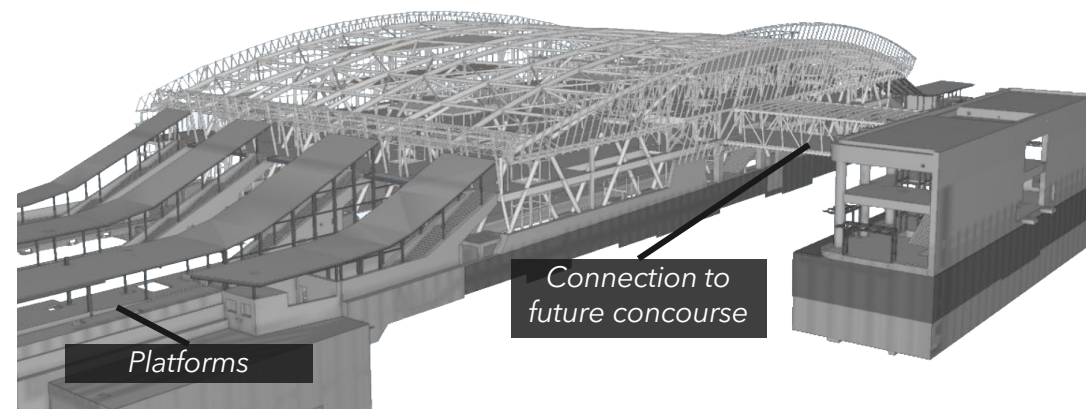
FUTURE NORTH STATION ENTRANCE WITH FOUNDATION



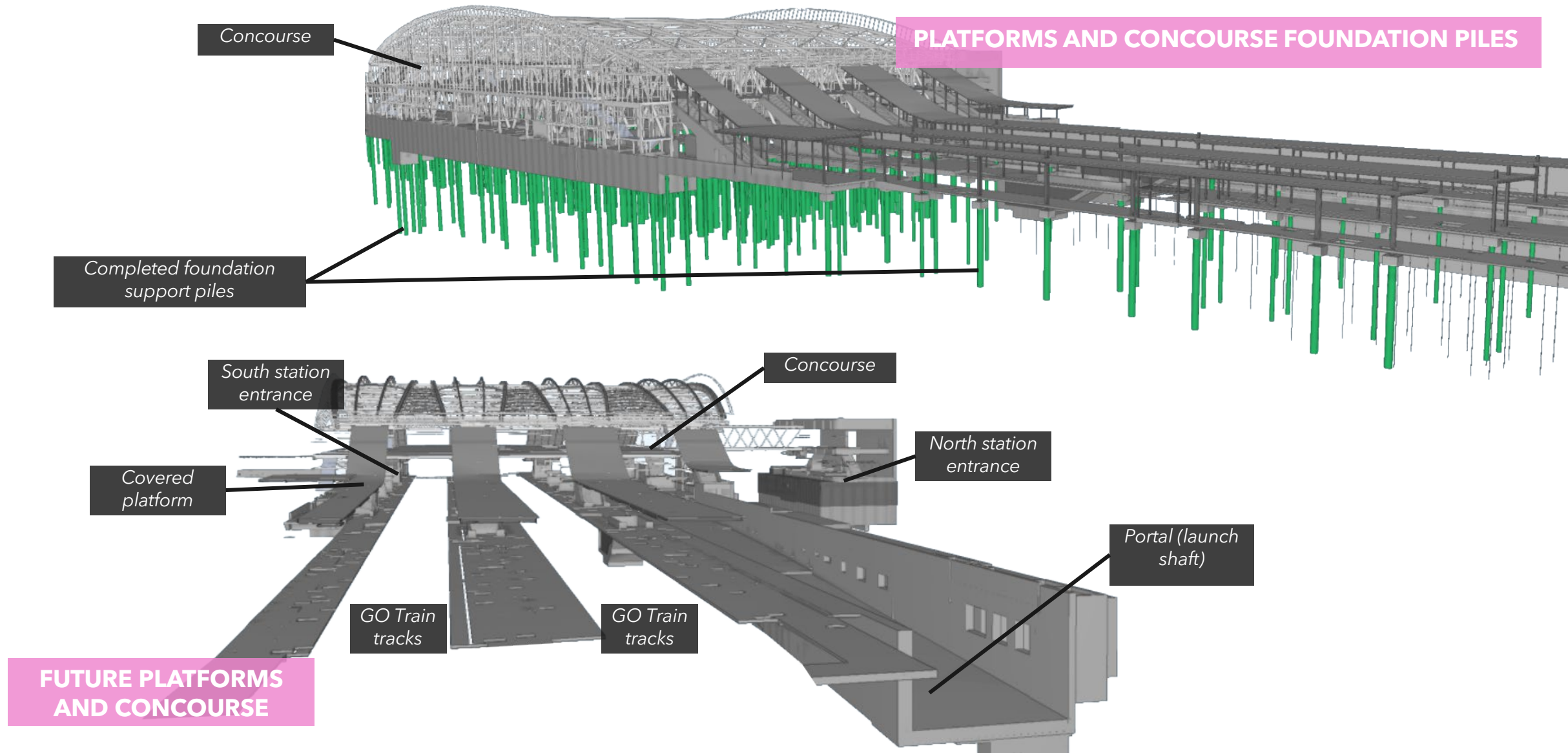
FUTURE NORTH STATION ENTRANCE



FINAL NORTH STATION ENTRANCE



Visuals shown are conceptual and for illustrative purposes only, designs are subject to change.



Visuals shown are conceptual and for illustrative purposes only, designs are subject to change.

LEGEND

1. Tower crane
2. Tower crane
3. North station entrance
4. Concrete pump
5. North station platform
6. Shared station platform
7. Island platform
8. South platform
9. Future south station entrance
10. Traction power substation (TPSS)
11. Portal
12. TBM prep area
13. Paved haul route
14. Conveyors



LOOKING EAST



CURRENT WORK: FUTURE EXHIBITION STATION EAST SIDE

Preparation work for tunnelling continues at the Exhibition portal.

- Installation of tunnelling support structures and equipment, including the conveyor system that will transport excavated material out of the future tunnel.
- Gantries for the tunnel boring machine are being assembled and lifted into position at the portal.

Permanent works are underway the **traction power substation (TPSS)**.

- Including rebar installations, waterproofing and concrete works.



View of the portal looking east, including the future conveyor system.



LEGEND

1. Grout plant
2. Retaining wall
3. Storage area
4. Muck pit
5. Mobile crane
6. TBM assembly area
7. Portal
8. TBM
9. Conveyors
10. Hanna Avenue access gates
11. Traction power substation (TPSS)

LOOKING WEST

CURRENT WORK: TUNNEL BORING SUPPORT OPERATIONS

Crews are preparing the east end of the site for the future tunnel boring machines (TBMs) and tunnelling operations.

A series of temporary structures is required to support future tunnelling operations.

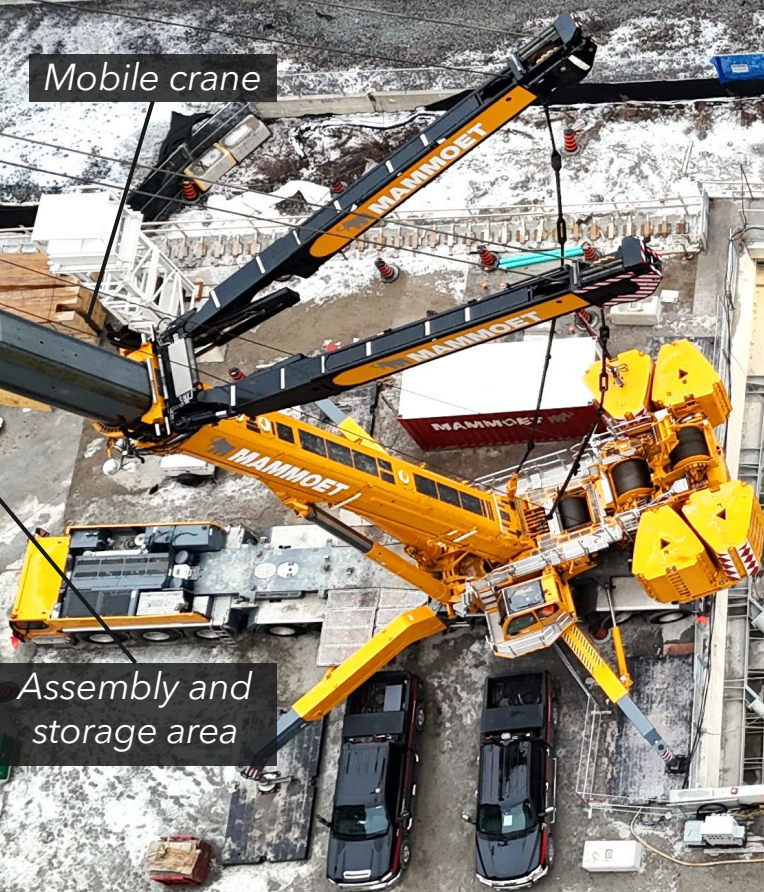
- Muck pit, retaining walls, storage area, water treatment plant and conveyor installations are underway.
- Future installation of grout plant to begin by the end of January.
- Future gantry cranes to be delivered and installed by Spring 2026.



A look at the tunnelling preparation area.

TBM ASSEMBLY AT THE PORTAL

Mobile crane



Assembly and storage area

TBM



WHAT TO EXPECT: TBM AND TUNNELLING OPERATIONS

Crews are getting ready for tunnelling, here's what you can expect in your neighbourhood.

Before tunnelling starts

- Increased activity at the portal with heavy equipment, cranes, and oversized deliveries for TBM components and materials.
- Moderate noise from structural work, deliveries, and assembly.

TBM assembly

- Visible crane operations lifting TBM segments (gantries, cutterheads, shields).
- Temporary on-site structures such as the muck pit, conveyors, and grout plant.
- Moderate noise from machinery, deliveries, and lifts.
- Traffic changes with new access points at Hanna Avenue and Strachan Avenue.

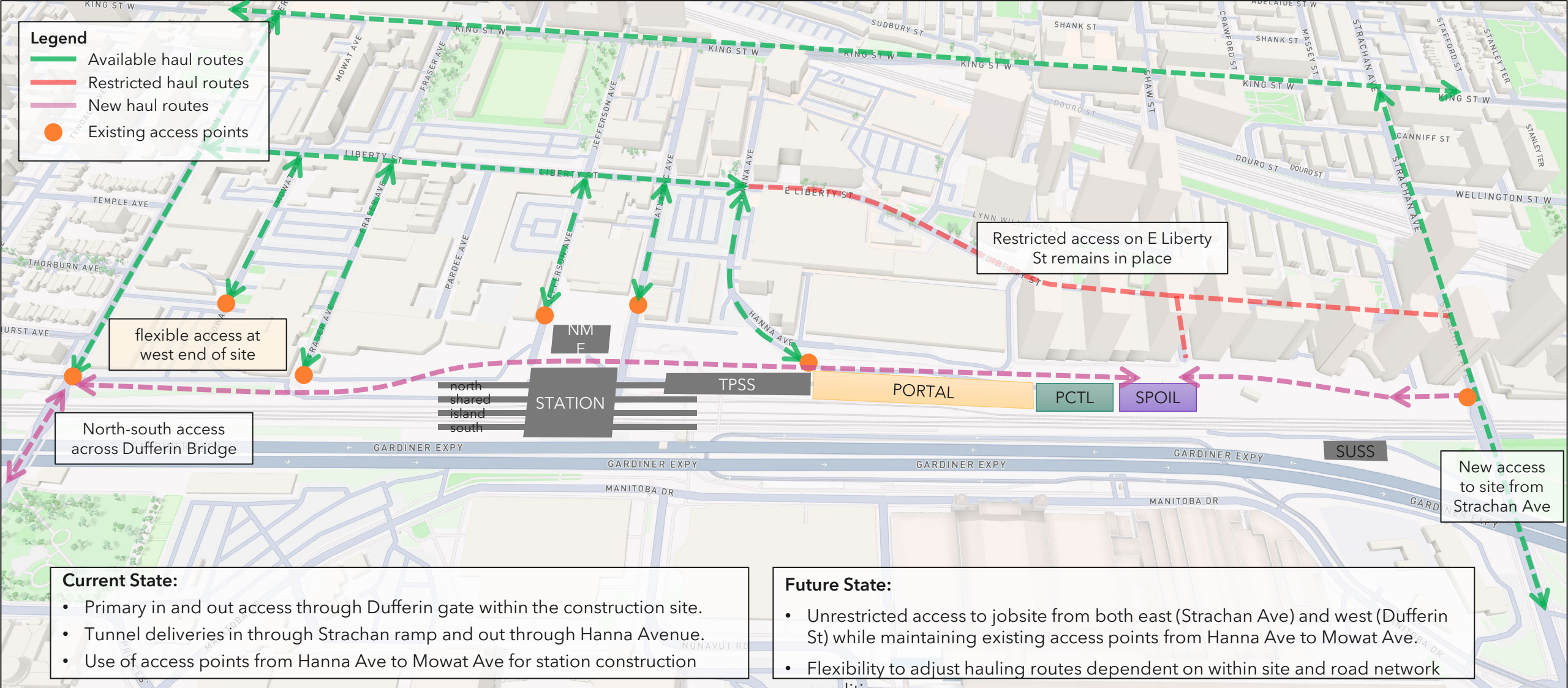
Active tunnelling

- Minimal noise and vibration due to TBM depth.
- TBM and conveyors operate 24 hours a day, up to six days a week (Monday-Saturday).
- Increased truck traffic on Strachan Avenue; primary haul route remains at Dufferin Street gates.



A view of the TBM gantry lift into the portal.

EXHIBITION STATION TRUCK ROUTE PLAN



TRAFFIC UPDATES AND WHAT TO EXPECT IN THE NEXT PHASE

- The **haul route between Dufferin and Strachan** is complete, asphalted and is being used.
- **Dufferin Road temporary access gate** is fully operational and **Dufferin bridge** assessment is complete with no critical issues identified, Ontario Line trucks will be using the bridge starting from February 2026
- **Strachan Ave temporary access gate** and ramp connecting to the haul route is complete and is being used under continuous traffic flagging supervision. The access has been designed to ensure a safer and more efficient option to what was proposed initially.

Next Phase:

To support tunnelling activities, Ontario Line trucks will be using:

- **Strachan Ave gate** will be used as an ingress for **tunnelling empty dump trucks** and **tunnelling deliveries**.
- **Hanna Ave** gate will be used as an **egress of trucks** from the tunnelling site and will turn left on Liberty Street towards Dufferin Road.
- **Dufferin Road gate** will be used as an **ingress/egress** gate to support station construction as well as tunnelling activities.

Regular updates will be shared monthly to communicate the expectation. The plans will remain flexible to adjust to avoid any congestion.



COMMUNITY SAFETY AND TRAFFIC BENEFITS

Community Safety:

- Site access will be controlled by traffic flag persons and paid duty officers (as required) to ensure community safety.
- Pedestrian and cyclists' routes will always be available and maintained.
- Using Strachan Ave access eliminates vehicles from queuing on the street and helps reduce dust and noise by using the paved access road within the construction site.

Traffic Benefits:

- The access from Strachan Ave. will eliminate the need for trucks to make a three-point turn within the site - this reduces the noise generated from trucks.
- Communications between the site, staging areas and dump sites keep trucks moving in and out of the site quickly.
- Street sweeping in Liberty Village will continue to reduce dust.



EXHIBITION STATION NEW GATE INSTALLATIONS



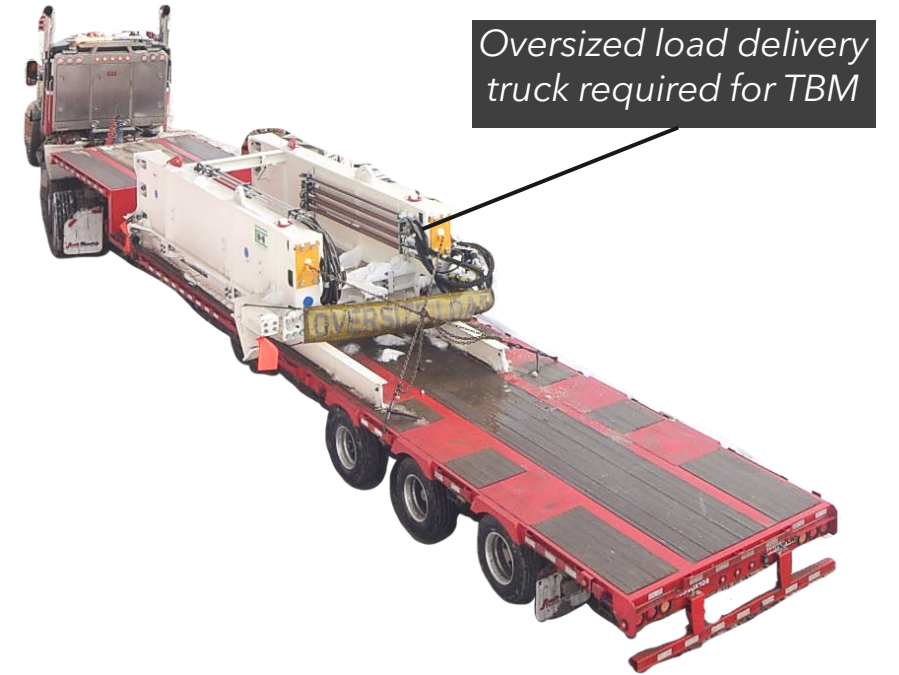
Strachan Avenue

New ramp installed for tunnel lining segments and TBM deliveries.



Hanna Avenue

Gate expanded for truck exit and occasional oversized deliveries.



Upcoming Work

EXHIBITION EIGHT-WEEK LOOKAHEAD: JANUARY-FEBRUARY 2026

#	Activity	Location	Expected Start	Expected Duration	Impact	Hours of Work	Mitigations
1	Waterproofing and concrete works	North main entrance, Portal, TPSS (traction power substation) Platforms	Ongoing	8 months	Very minor noise	Monday to Saturday 7 am to 7 pm, occasional Saturdays from 7 am to 6 pm Portal works may start as early as 5 am weekdays.	Hoarding and fencing, street cleaning, dust control
2	Foundation and structural support	Station platforms, GO rail corridor	Ongoing	End of January	Moderate noise, dust and vibration	24 hours a day, Monday through Friday, and 7 am to 6 pm Saturday (when necessary) * * Temporary additional hours required during upcoming weekends due to the Metrolinx minor track closure.	Coordination with GO station service

EXHIBITION EIGHT WEEK LOOKAHEAD: JANUARY-FEBRUARY 2026

#	Activity	Location	Expected Start	Expected Duration	Impact	Hours of Work	Mitigations
4	Watermain installations	Dufferin Street	Ongoing	Through February 2026	Sidewalk closure at Dufferin Street, moderate noise	Weekdays 7 am to 5:30 pm	Flag personnel on site. Street cleaning, dust control
5	TBM preparation activities, water treatment plant, grout plant, workshop, steel structures	East end of site	Ongoing	Through Spring 2026	Moderate noise, dust, increased portal activity	Weekdays 7 am to 7 pm	Monitors in place for noise and dust, dust control
6	TBM and conveyor delivery and assembly	East end of site	Ongoing	Through May 2026	Moderate noise, increased portal activity	Weekdays 24 hours, occasional Saturdays as needed from 7 am to 5 pm	Flag personnel, monitors in place for noise and dust, dust control

CONSTRUCTION DURING FIFA

Toronto will **host six FIFA26 matches** on the following dates:

1. Friday June 12 @ 3 p.m.
2. Wednesday June 17 @ 7 p.m.
3. Saturday June 20 @ 4 p.m.
4. Tuesday June 23 @ 7 p.m.
5. Friday June 26 @ 3 p.m.
6. Thursday July 2 @ 7 p.m.



- Ontario Line construction will continue during FIFA World Cup 2026 at all Ontario Line work sites. However, **all trucking into and out of the Exhibition area sites will stop for approximately 12 hours on the six planned match days in Toronto.** Reduced construction and maintenance activities will continue within the Exhibition area sites without impacting matches, fans, customers or the public at large. During non-match days Metrolinx will review our plans once the Fan Festival schedule is confirmed.
- Safety and Customer Service staff will be present across our network and at our stations to ensure a safe customer experience.
- Metrolinx is moving into the next phase of planning and working closely with partners to refine transit and operational plans to reflect match start times and participating countries. **Further details will be shared as planning advances.**



Discussion

KEEPING YOU INFORMED

Metrolinx will keep the community, residents and businesses informed by providing project updates, seeking input and feedback, while addressing questions and concerns effectively and quickly.

Next CLC meeting: Our next meeting is expected to take place in March 2026

Connect with us:

- Jillian MacIntyre, Community Engagement Advisor
- Ross Andersen, Senior Advisor, Community Engagement

Email: OntarioLine@metrolinx.com

Telephone 24/7 @ 416-202-5100

Follow us on social media:

X (formerly known as Twitter) / Facebook / Instagram:
@OntarioLine



*Scan here to sign up
for the Ontario Line
e-newsletter*



*Scan here to explore
Ontario Line CLC
documents*







Artist's rendering – subject to change. Transit-Oriented Community proposals not shown.