

Ontario Line

Osgoode Construction Liaison Committee

March 25, 2026

 METROLINX



Agenda

Welcome (5 min)

- Introductions
- Land Acknowledgment
- Safety Moment

Presentation (30 min)

- Osgoode Station South and North site Construction Updates

Q/A and discussion (25 min)



LAND ACKNOWLEDGEMENT

Metrolinx acknowledges that we connect communities by building and operating transit within the traditional lands of the Anishinaabe, the Haudenosaunee and the Wendat peoples, for whom these lands continue to have great importance.

Treaties between First Nations and governments cover these lands, and the promises contained in these Treaties remain relevant to this day.

Metrolinx and its employees are committed to understanding the history of these lands and the continued impacts of colonization and take responsibility for actions to advance reconciliation.

Metrolinx will continue to seek the knowledge, expertise and experience of Indigenous partners and commits to doing business in a manner that is built on a foundation of trust, respect, and collaboration.



SAFETY MOMENT: SPRING FLOOD AWARENESS

Spring is here, bringing warmer temperatures and new opportunities for recreational activities. However, it's essential to be mindful of safety near water during this season.

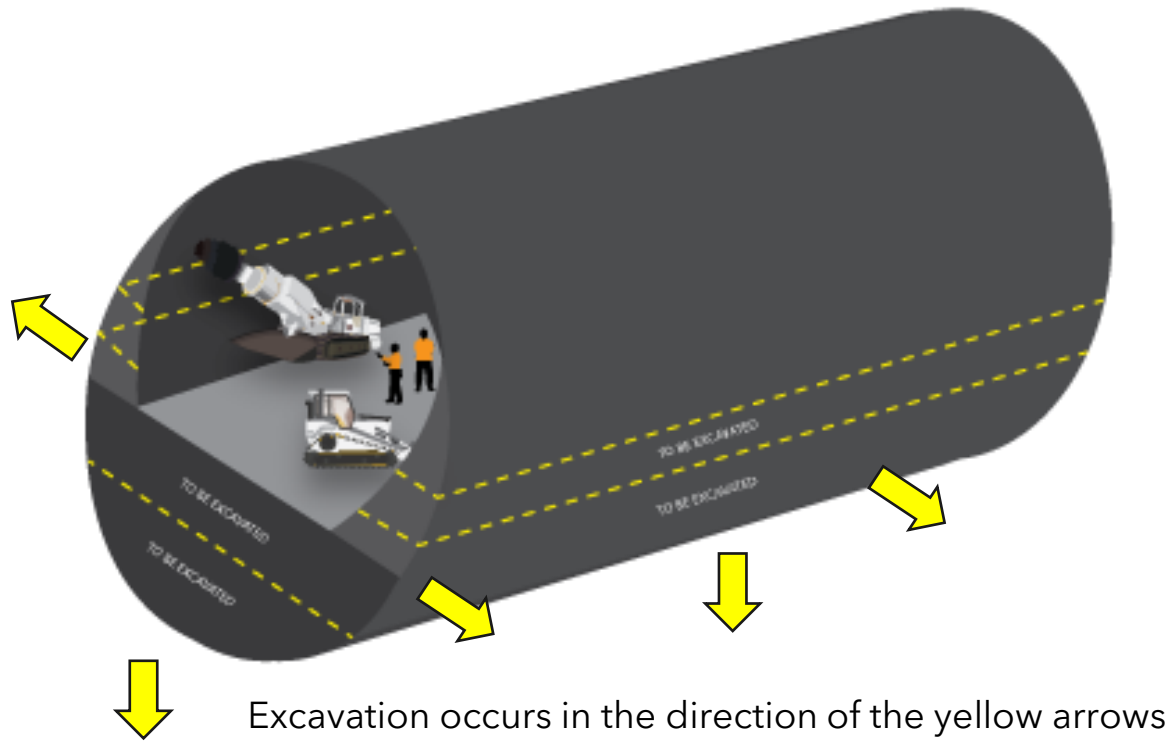
- **Spring snowmelt and rain can create higher, faster-moving water** – seasonal temperature changes can cause sudden increases in water flow, making conditions unpredictable.
- **Riverbanks may be slippery and unstable from erosion** – softened ground and runoff can weaken the edges, increasing the risk of slips or collapses.
- **Stay well back from all water edges** – keep children and pets away, as fast-moving or rising water can pose hidden dangers.
- **Do not walk or drive on ice** – warming temperatures weaken ice unpredictably, increasing the chance of break-throughs.



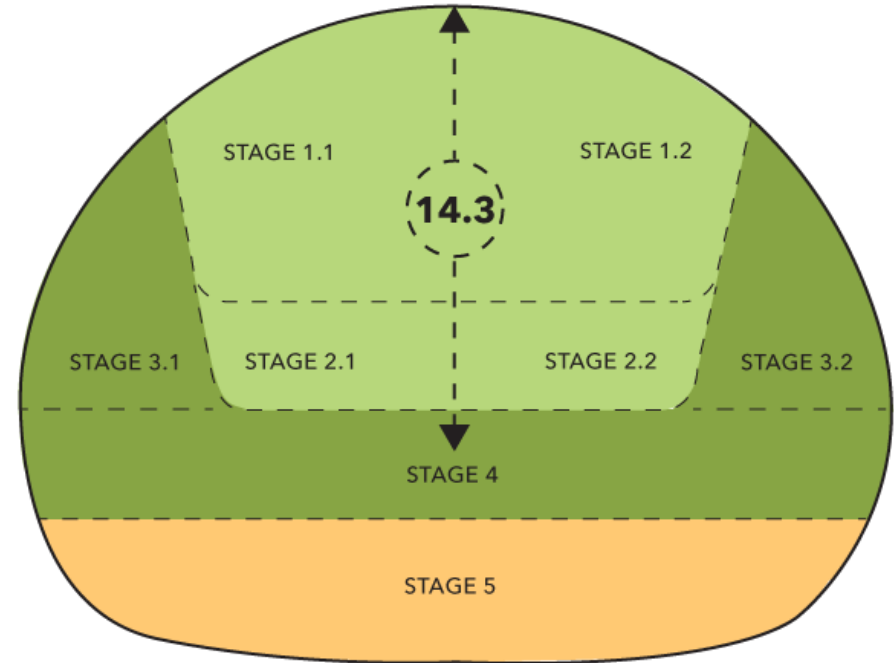
Osgoode Construction Update

CURRENT WORKS - CAVERN EXCAVATION - SOUTH SITE

- As illustrated below, crews are sequentially widening and deepening the cavern.
- Work operates continuously, 24 hours a day, 7 days a week.
- Expected completion date: May 2026.



Stage 3 & 4 currently underway



- Dark Green** = Current excavation underway
- Light Green** = Completed excavation
- Orange** = Next & final stages

CURRENT WORKS - CAVERN EXCAVATION PROGRESS - SOUTH SITE

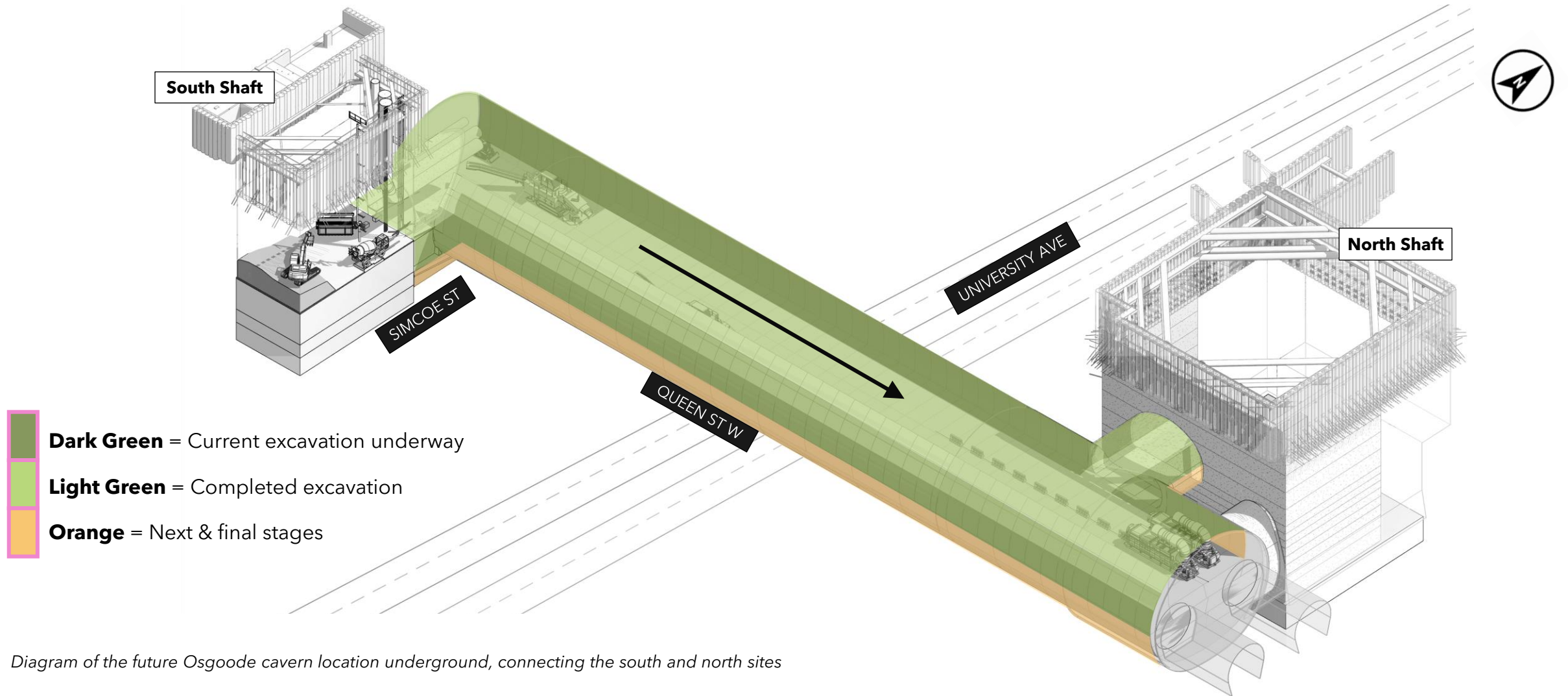


Diagram of the future Osgoode cavern location underground, connecting the south and north sites

ROCK DRILLING IN PROGRESS



CURRENT WORKS - NORTH SITE

Support of excavation works **ongoing** including:

- Phase 2; **rock excavation and removal**
 - *Completion expected by Summer 2026
- Rock breaking + excavation
- Rock bolts installation
- Shotcrete application
- Acoustic shelter (garage doors installation)
- Temporary deck installation
- Pedestrian walkway configuration during hauling

*Work is underway on 24-hour shifts, seven days a week (Monday through Sunday).



Excavator loading shale into the skip bin

EXCAVATION AT 28 METRES IN THE NORTH SHAFT



UPCOMING WORKS

Vent shaft excavation at Osgoode north

Expected start date: April 2026

Hours of work: 24 hours day, seven days/week

Duration: Up to seven months (September/October 2026)

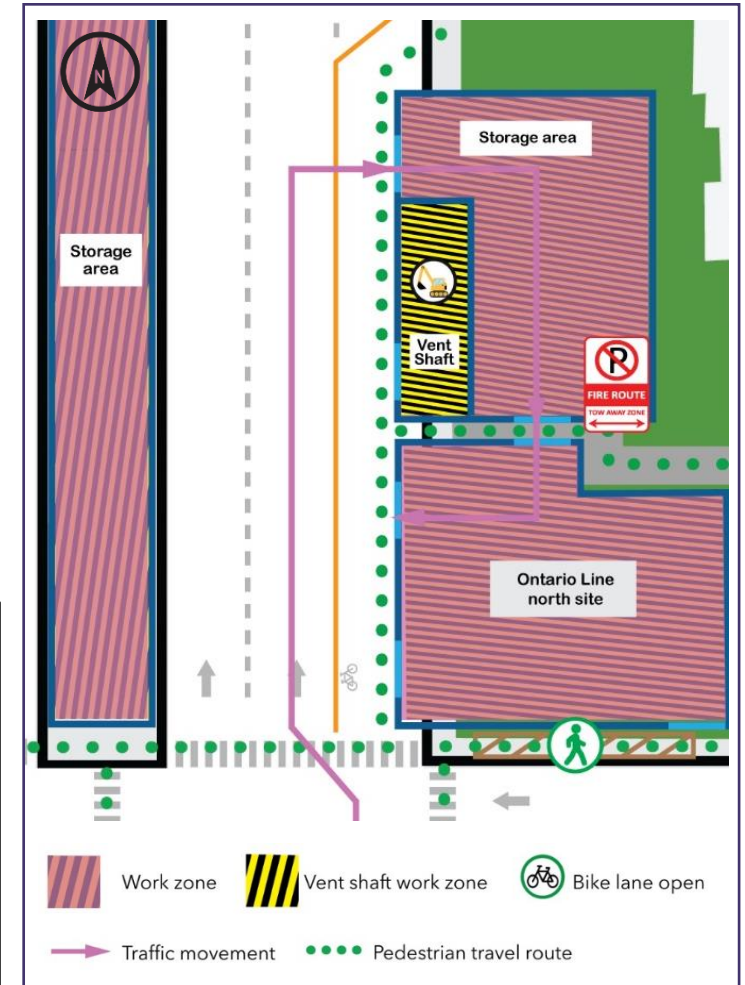
Crews are preparing for the next phase of work at the future Osgoode north station including **excavation** of a **ventilation shaft**. Piling of the shaft was completed in mid-2025.

Ventilation shafts are an important part of every subway system. They help move fresh air into tunnels and stations, release warm air, and allow smoke to be safely vented in the unlikely event of an emergency. At street level, they are typically seen as metal grates or structures integrated into the sidewalk or station area.

- Preparation for **excavation of soil and rock levels including hauling.**
- *Rock excavation (and supporting works) within the acoustic shelter are ongoing.*



Example of a vent shaft. Visible metal grates integrated into the sidewalk.



UPCOMING LONG-TERM CLOSURE (11 MONTHS) - SIMCOE STREET

Simcoe Street partial closure

Expected start date: April 2026

Hours of work: 24 hours a day, 7 days a week

Simcoe Street between **Queen Street West and the laneway** south of the site will be temporarily closed for approximately 11 months to allow safe access and staging of equipment and trucks.

What to expect

- No vehicle access from Queen Street West
- South access (laneway to Richmond Street West) remains open
- Pedestrian and cyclist access maintained on the east sidewalk
- Flaggers on site daily to manage laneway access

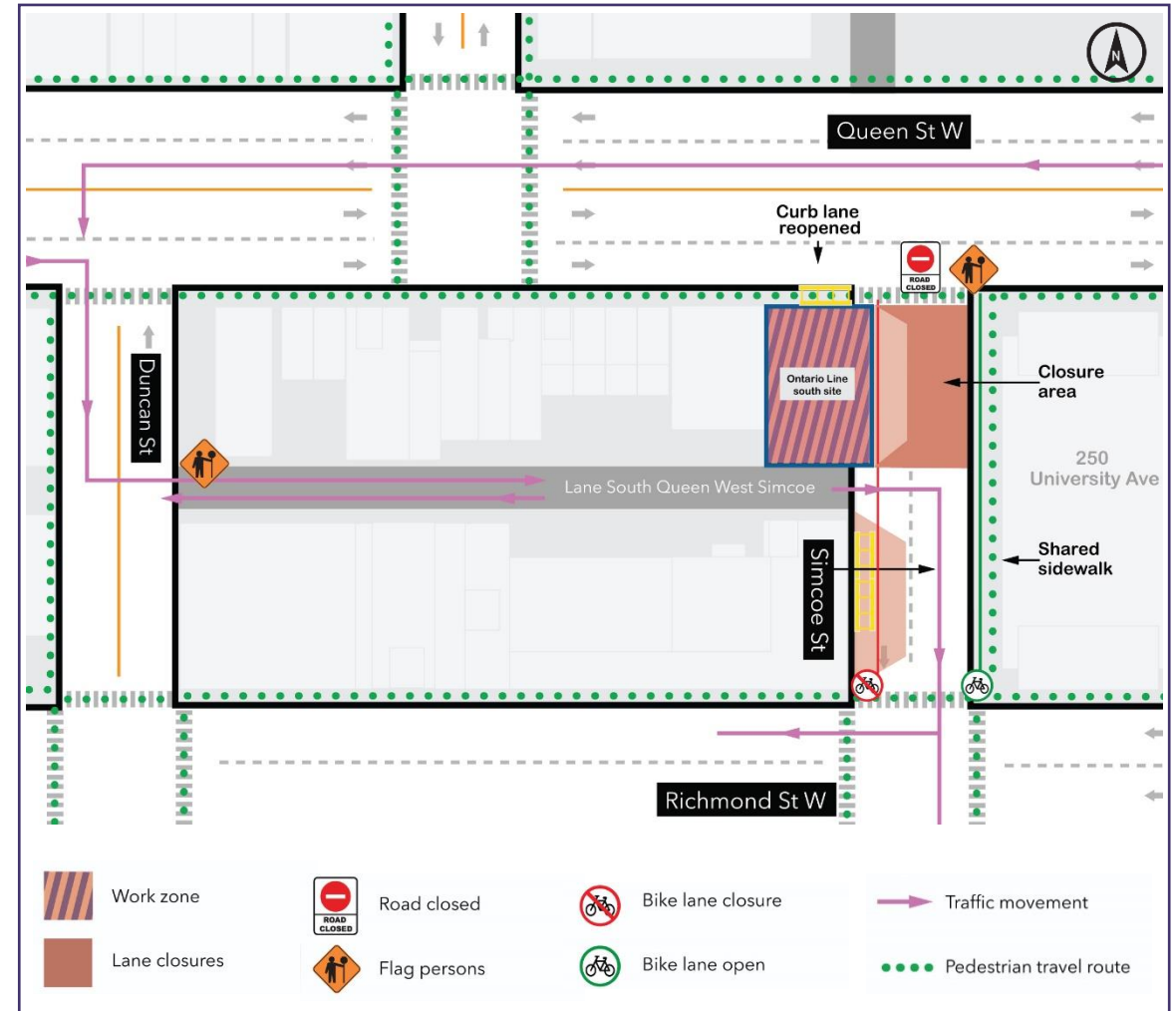
Laneway Access

- Bins to be kept clear of access points (delivery doors, parking garage)
- No parking will be enforced

Starting as early as March 25

- Overnight prep work (9 p.m. to 5 a.m.)
- Daytime access maintained

Full details available [here](#)



Upcoming Work

EIGHT WEEK LOOK-AHEAD: April - May 2026

#	Activity	Expected Start	Location	Expected Duration Remaining	Impact	Hours of Work	Mitigations
1	Excavation & hauling; rock level	Ongoing	North shaft	2.5 months	Vibration, noise, air quality	Monday to Sunday, 24 hour/day	Acoustic shelter, hoarding. Dust mitigation includes misting, sweeping. Noise and air quality monitoring. Erosion and sediment control.
2	Pedestrian walkway (between the construction areas)	Ongoing		1 month	Noise		
3	Vent shaft excavation & hauling; soil & rock	April		5 months	Vibration, noise, air quality		
4	Cavern excavation and construction of headwalls	Ongoing	South shaft	2.5 months	Vibration, noise, air quality		Acoustic shelter, hoarding. Dust mitigation includes de-duster, misting, sweeping. Noise and air quality monitoring. Erosion and sediment control.
5	Simcoe Street closure (bike path realignment works)	Late March		2 weeks	Minor noise		Dust mitigation includes misting, sweeping. Noise and air quality monitoring. Erosion and sediment control. Traffic control (flaggers and planned routes and logistics) to minimize traffic disruptions.

*Note: All dates and times are subject to change as construction planning progresses

Discussion

KEEPING YOU INFORMED

Metrolinx will keep the community, residents and businesses informed by providing project updates, seeking input and feedback, while addressing questions and concerns effectively and quickly.

Next CLC meeting: April 22, 2026

Connect with us:

- Libaan Geedi, Community Engagement Advisor
Libaan.Geedi@metrolinx.com
- Ross Andersen, Senior Community Engagement Advisor
Ross.Andersen@metrolinx.com
- Mark Clancy, Senior Manager, Community Engagement
Mark.Clancy@metrolinx.com

Email: OntarioLine@metrolinx.com
Telephone 24/7 @ 416-202-5100

Follow us on social media:

X (formerly known as Twitter) / Facebook / Instagram: @OntarioLine



Scan here to sign up for the new and improved Ontario Line e-newsletter



Scan here to explore Ontario Line CLC materials

