

Ontario Line

# Osgoode Construction Liaison Committee

January 28, 2026





# Agenda

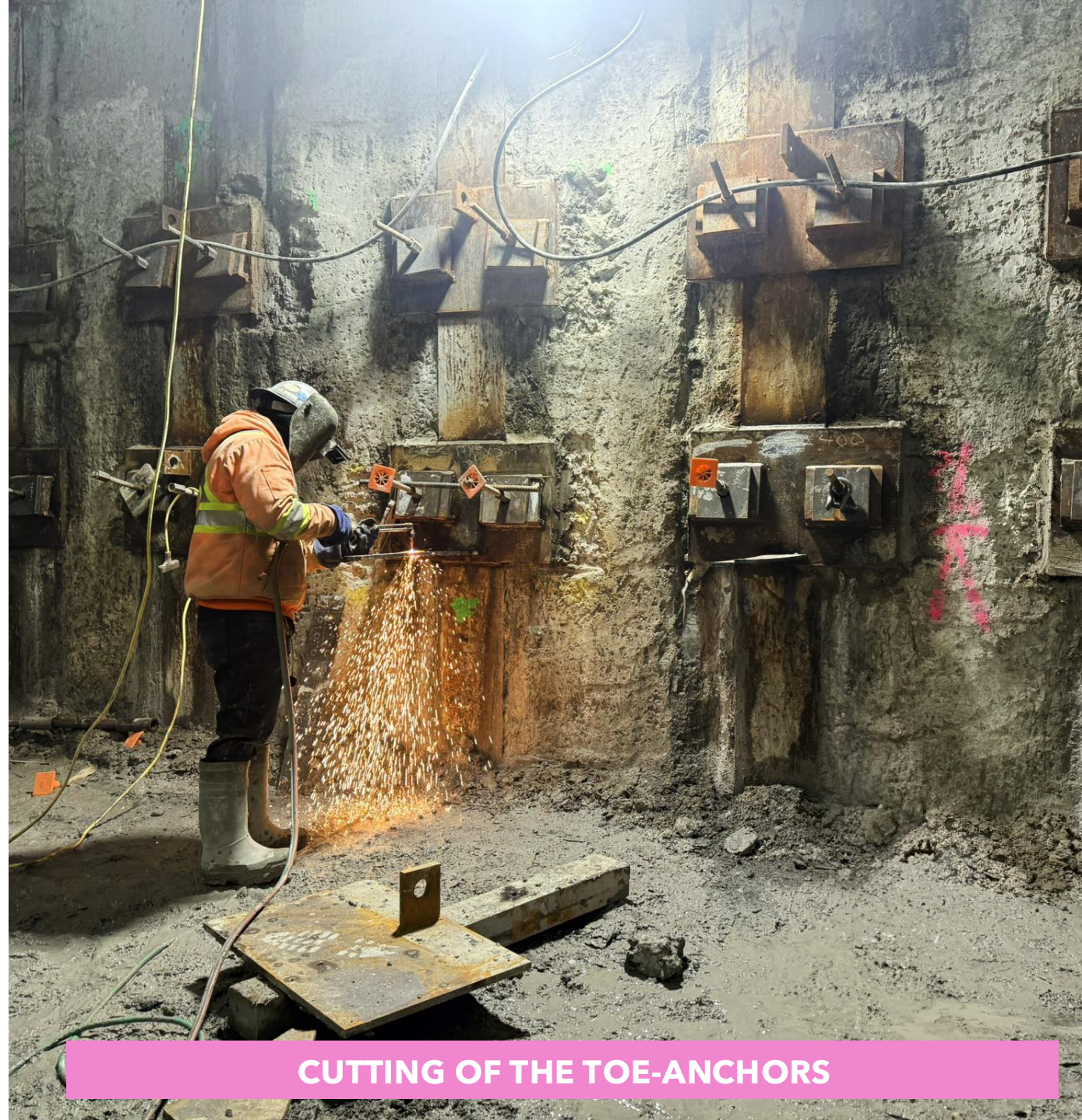
## Welcome (5 min)

- Introductions
- Land Acknowledgment
- Session Guidelines
- Safety Moment

## Presentation (30 min)

- Osgoode Station South and North Site Construction Updates
- Haul Routes

## Q/A and discussion (25 min)







# LAND ACKNOWLEDGEMENT

Metrolinx acknowledges that we connect communities by building and operating transit within the traditional lands of the Anishinaabe, the Haudenosaunee and the Wendat peoples, for whom these lands continue to have great importance.

Treaties between First Nations and governments cover these lands, and the promises contained in these Treaties remain relevant to this day.

Metrolinx and its employees are committed to understanding the history of these lands and the continued impacts of colonization and take responsibility for actions to advance reconciliation.

Metrolinx will continue to seek the knowledge, expertise and experience of Indigenous partners and commits to doing business in a manner that is built on a foundation of trust, respect, and collaboration.

## SAFETY MOMENT: BE PREPARED FOR THE WINTER SEASON

### Ensuring a safe commute around the future Osgoode station

#### Keeping sidewalks clear and accessible

- Our team ensures pedestrian pathways around the site remain clear of snow and ice. Please follow posted detour routes for your safety.

#### Watch for changing conditions

- Winter weather can make surfaces slippery. Wear proper footwear and stay alert near construction areas.

#### Maintain visibility

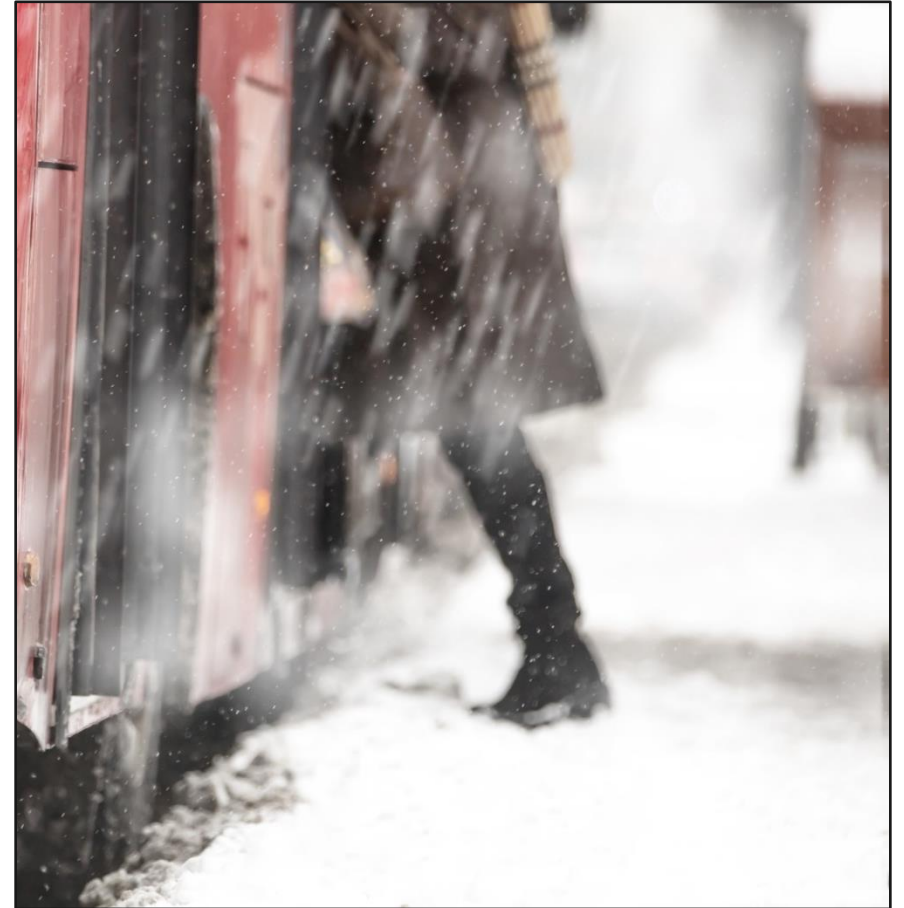
- With shorter daylight hours, lighting is in place. Be mindful of marked crosswalks and pedestrian signals.

#### Respect construction barriers

- Barriers are set up to protect you. Avoid cutting through restricted areas for your safety and ours.

#### Be patient with delays

- Winter conditions may impact movement at site, specifically at entry and exit gates. Ensure you follow directions by the flag persons when in these areas to ensure a safe crossing.



# Session Guidelines

We greatly appreciate the community members who are here to take part in this public session.

To ensure that everyone can contribute to a positive and safe community experience, all participants shall adhere to the following *Code of Conduct*:

- Treat the presenters and participants with respect and understanding
- Acknowledge and appreciate the diversity of individuals and their situations
- Refrain from supporting or engaging in any form of discriminatory behaviour
- To respect the privacy of CLC members, our employees and contractors, recording the CLC by any means is not permitted including the use of AI minute taking software.

**Metrolinx is committed to fostering a safe and respectful environment.**

**We encourage respectful and constructive communication.**

# Osgoode Construction Update



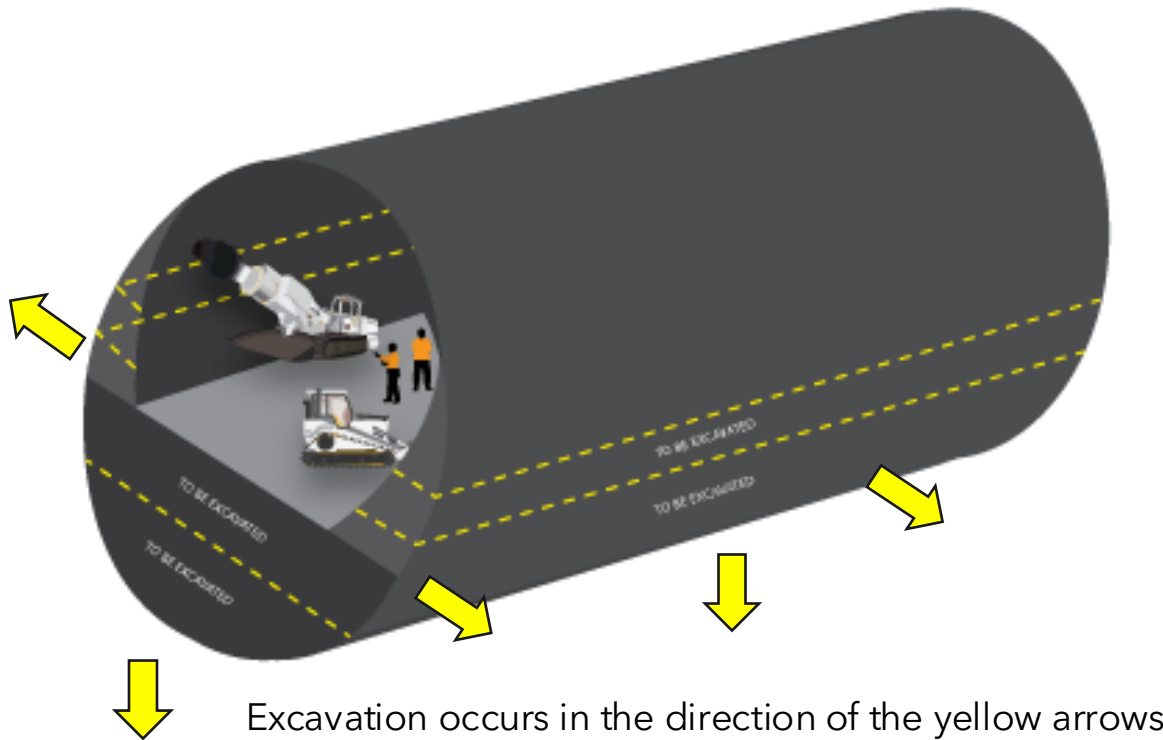
# ROADHEADER AT THE CAVERN



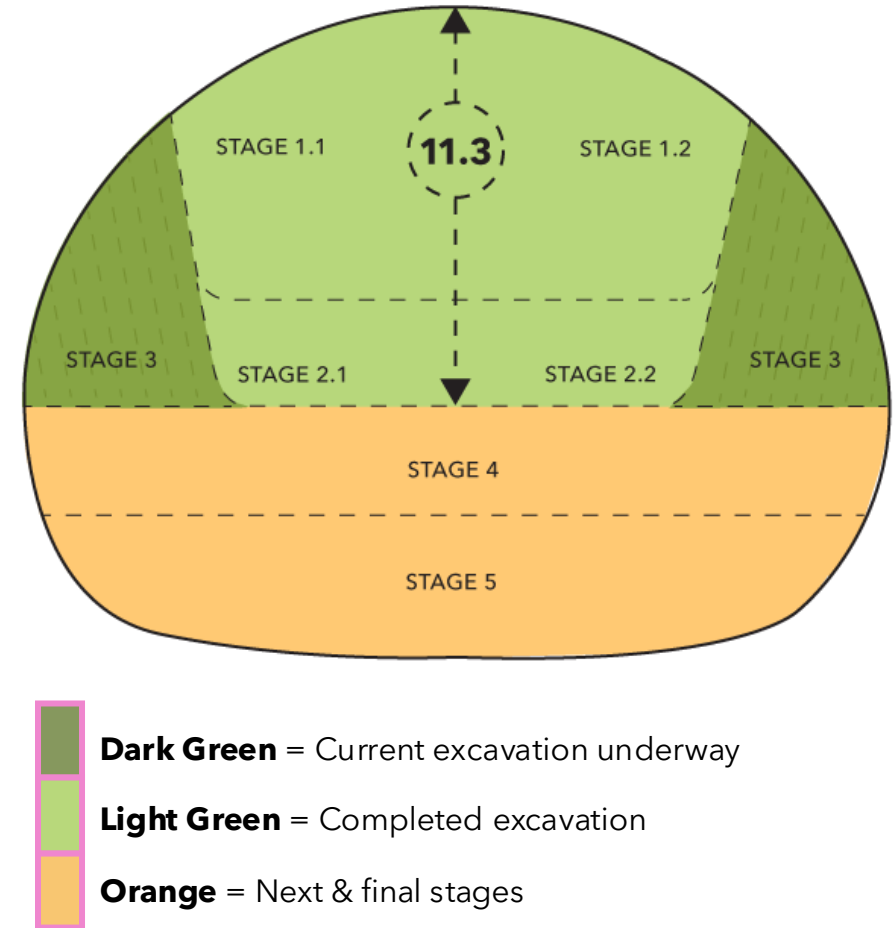


## CURRENT WORKS - CAVERN EXCAVATION - SOUTH SITE

- As illustrated below, crews are sequentially widening and deepening the cavern.
- Work operates continuously, 24 hours a day, 7 days a week.
- Expected completion date: Spring 2026.



### Stage 3 currently underway





## CURRENT WORKS - CAVERN EXCAVATION PROGRESS - SOUTH SITE

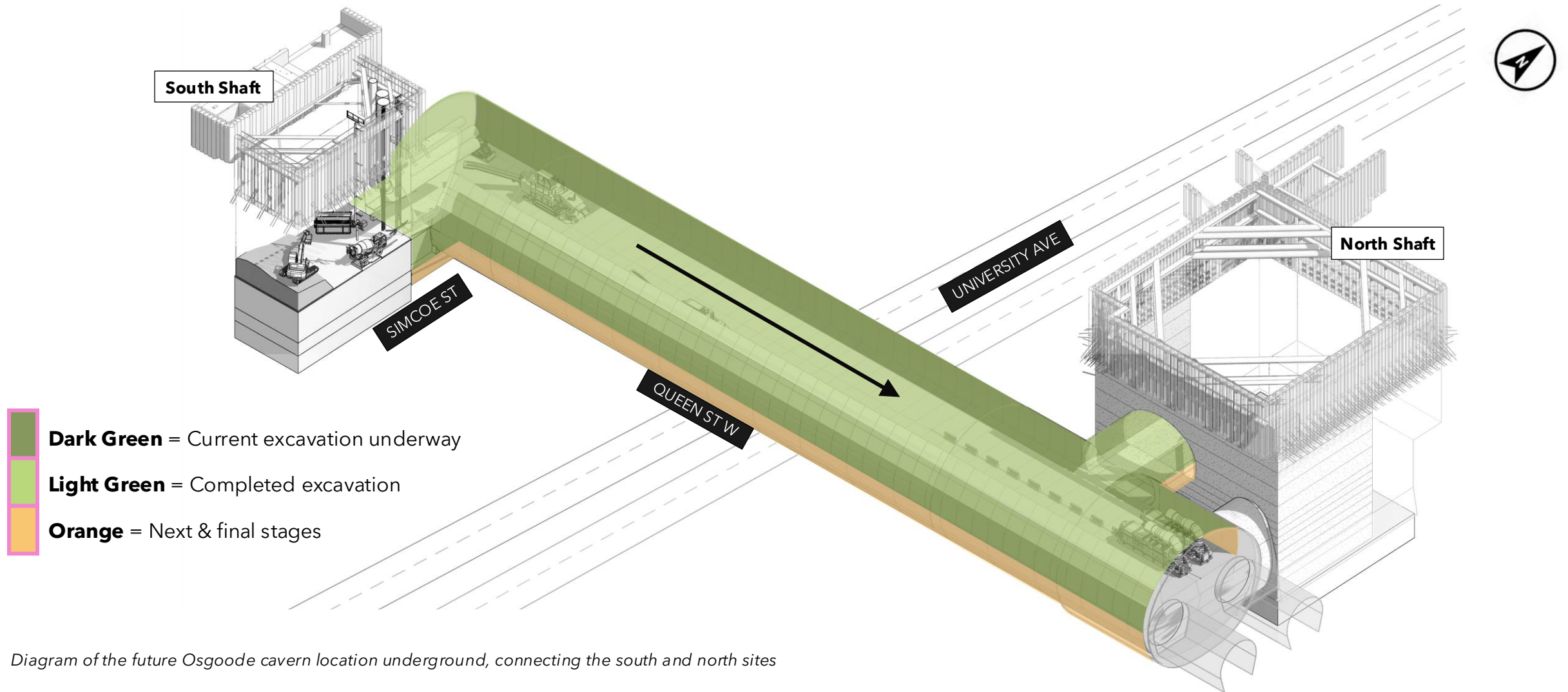


Diagram of the future Osgoode cavern location underground, connecting the south and north sites

## CURRENT WORKS - NORTH SITE

Support of excavation works **ongoing** including:

- Phase 2; **rock excavation and removal**

\*Completion expected by Summer 2026

- Toe anchor installation nearing completion

\*Work is underway on 24-hour shifts, seven days a week (Monday through Sunday).

Recently **completed** includes:

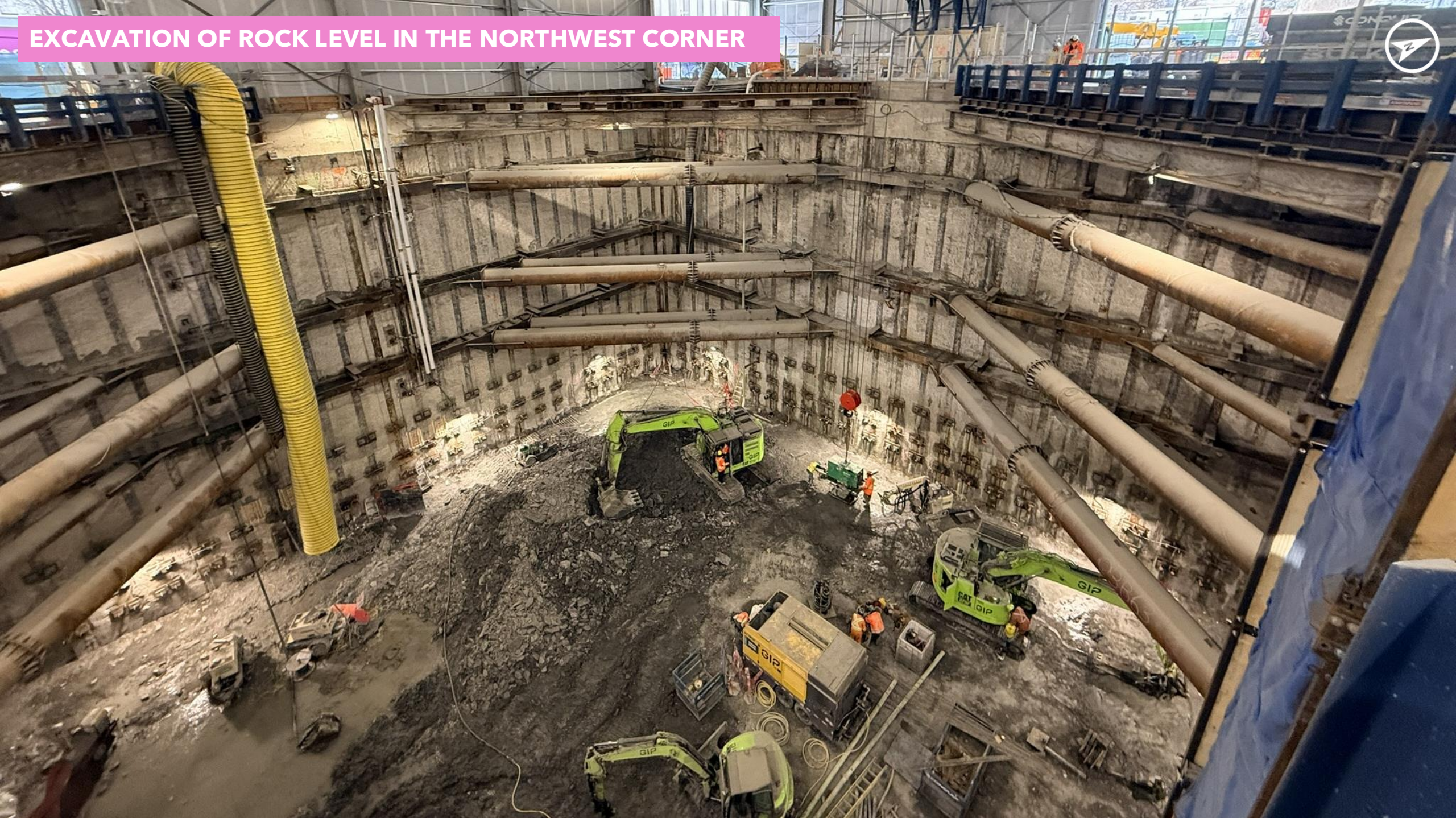
- Phase 1; soft soil excavation and removal
- Struts and walers installation (three levels)
- Acoustic shelter cladding (soundproof panels) installation
- Installation of temporary power substation on Queen Street West



*East wall of the acoustic shelter looking south*



## EXCAVATION OF ROCK LEVEL IN THE NORTHWEST CORNER





## UPCOMING WORKS - PLANNED CLOSURES

### University Avenue (Northbound)

#### ► Site service installation (hydrant relocation)

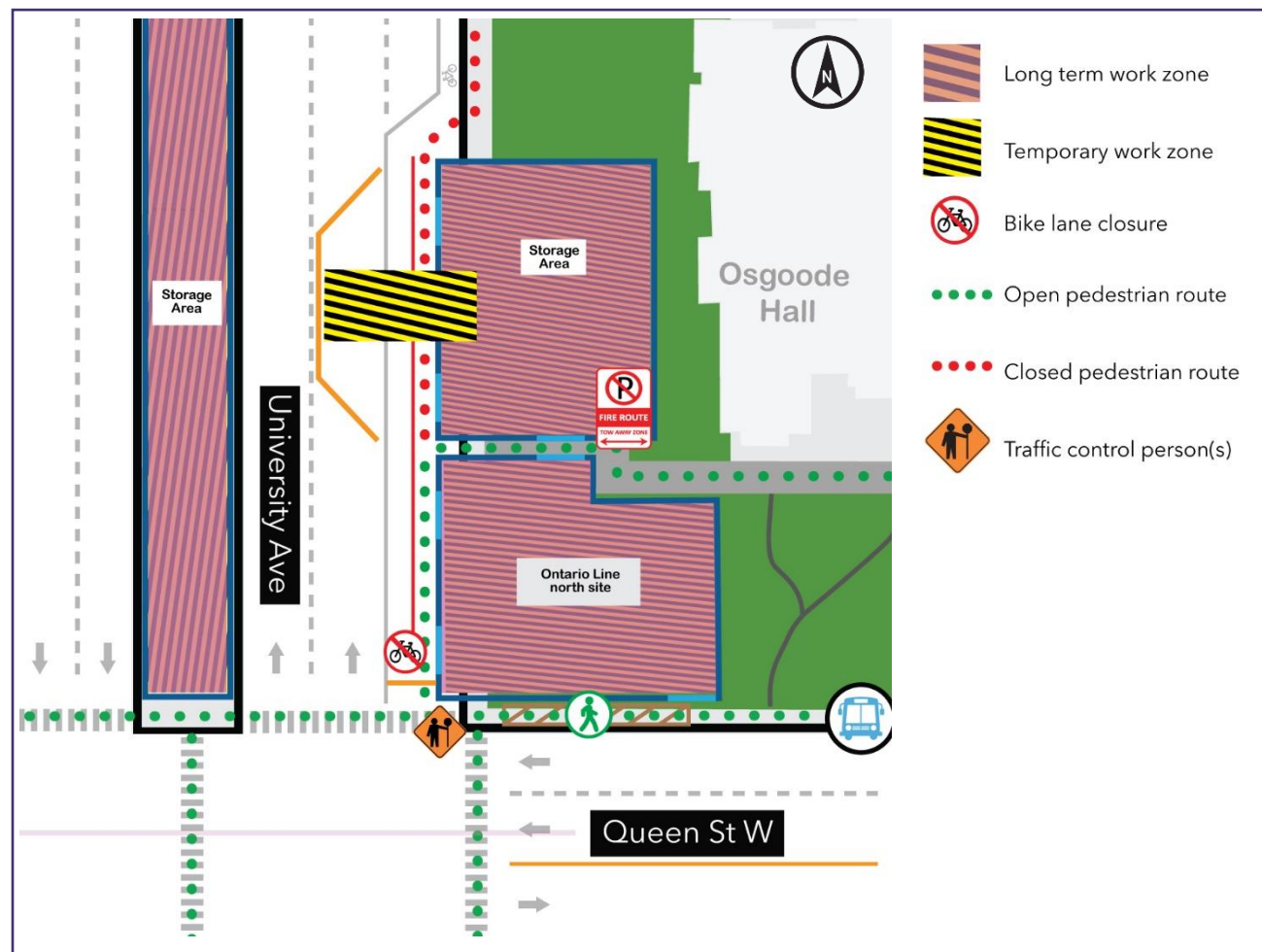
- As early as mid-February 2026
- For up to three weeks
- Weeknights and Saturdays 7 p.m. to Mondays 7 a.m.

**Traffic changes:** The northbound traffic lane, bike path and pedestrian path on University Avenue northbound will be affected during active work. See map.

Full notice details [here](#)



All traffic, cycling, and pedestrian routes will be reinstated between 7 a.m. and 7 p.m.





# Upcoming Work

# EIGHT WEEK LOOK-AHEAD: January – February 2026

#	Activity	Expected Start	Location	Expected Duration	Impact	Hours of Work	Mitigations
1	Excavation & hauling; rock level	Ongoing	North shaft	5.5 months	Vibration, noise, air quality	Monday to Sunday, 24 hour/day	Acoustic shelter, hoarding. Dust mitigation includes misting, sweeping. Noise and air quality monitoring. Erosion and sediment control.
2	Installation of temporary power	Ongoing		Ongoing	Noise, temporary sidewalk closures		
3	Pedestrian walkway (between the construction area)	Started/ongoing		2 months	Noise		
4	Cavern excavation and construction of headwalls	Started/ongoing	South shaft	4.5 months	Vibration, noise, air quality		Acoustic shelter, hoarding. Dust mitigation includes de-duster, misting, sweeping. Noise and air quality monitoring. Erosion and sediment control.

\*Note: All dates and times are subject to change as construction planning progresses



# Discussion

## KEEPING YOU INFORMED

**Metrolinx will keep the community, residents and businesses informed by providing project updates, seeking input and feedback, while addressing questions and concerns effectively and quickly.**

**Next CLC meeting:** February 25, 2026

**Connect with us:**

- Libaan Geedi, Community Engagement Advisor  
[Libaan.Geedi@metrolinx.com](mailto:Libaan.Geedi@metrolinx.com)
- Ross Anderson, Senior Community Engagement Advisor  
[Ross.Anderson@metrolinx.com](mailto:Ross.Anderson@metrolinx.com)
- Mark Clancy, Senior Manager, Community Engagement  
[Mark.Clancy@metrolinx.com](mailto:Mark.Clancy@metrolinx.com)

Email: [OntarioLine@metrolinx.com](mailto:OntarioLine@metrolinx.com)  
Telephone 24/7 @ 416-202-5100

**Follow us on social media:**

X (formerly known as Twitter) / Facebook / Instagram: @OntarioLine



*Scan here to sign up for the  
new and improved  
Ontario Line e-newsletter*



*Scan here to explore  
Ontario Line CLC materials*



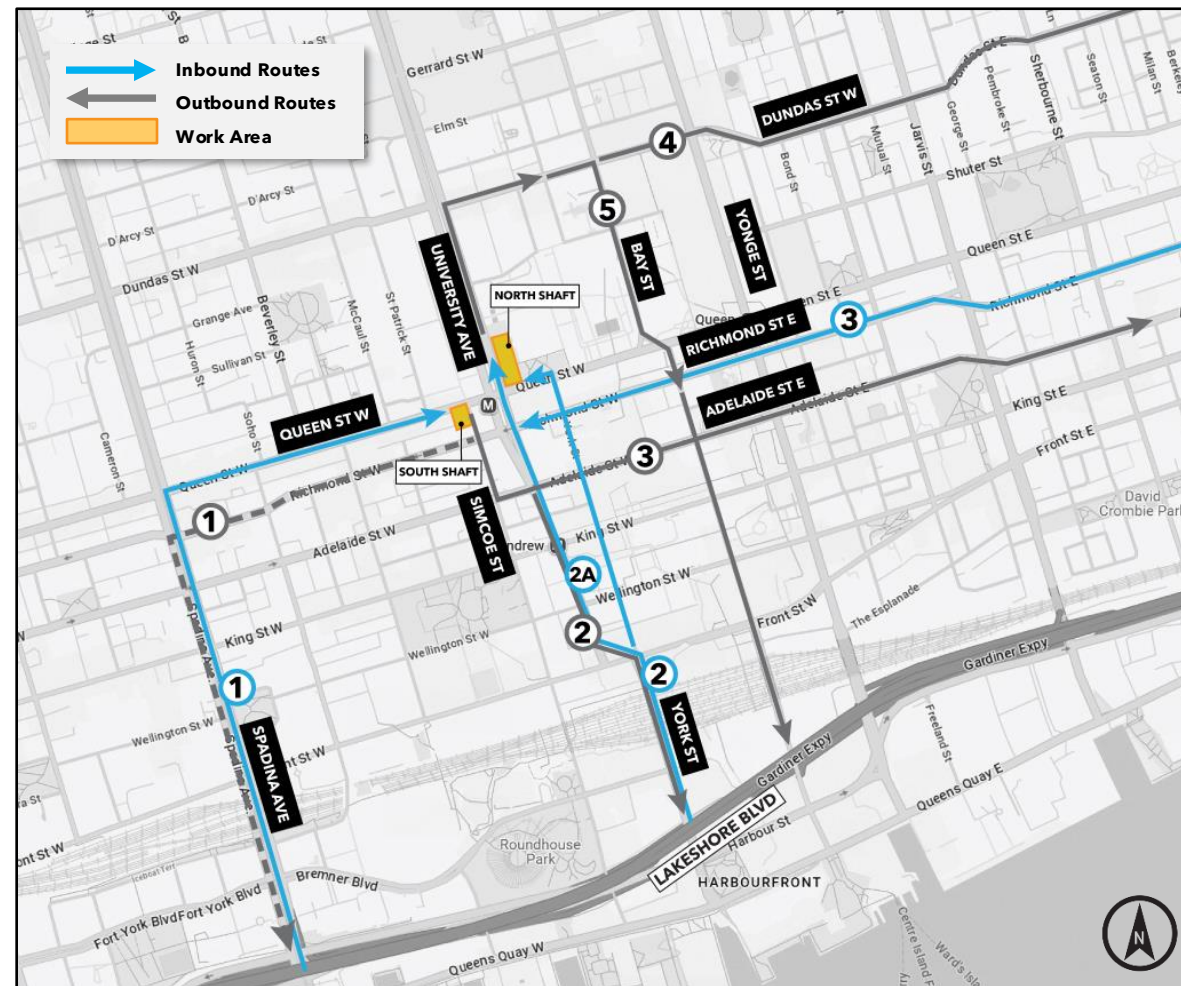


# ALTERNATE ROUTES **NOW IN EFFECT** Until the completion of the Don Valley Parkway off-ramp rehabilitation

Please note that the truck routes and volumes outlined are subject to change.

- ① Lake Shore/Gardiner to Spadina, north to Queen, east to site
- ② Lake Shore/Gardiner to York, north to Queen, west to site
- ②A Lake Shore/Gardiner north to York, west onto University, north to site
- ③ DVP to Richmond, west to York or Bay, north to site
- ① Exit site west on Richmond to Spadina, south to Gardiner/Lake Shore (only used DVP on-ramp closure)
- ② Exit site south on Simcoe to Adelaide, east to University, south to York, south to Gardiner/Lake Shore
- ③ Exit site south on Simcoe to Adelaide, east to DVP
- ④ Exit site north on University to Dundas, east to DVP
- ⑤ Exit site north on University to Dundas, east to Bay, south to Lake Shore/Gardiner

**Peak Average Daily Truck Count: 36**



For more information on the Ontario Line Truck Route Safety Plan, click [HERE](#)