

Construction Liaison Committee

Pape-Riverdale

June 23, 2026

AGENDA

1. Introduction

- Land Acknowledgement
- Safety Moment
- Session Guidelines

2. Pape Sewer Utility Relocations

- Construction Update
- Monitoring Update
- Upcoming Works

3. Discussion: Pape Sewer Utility Relocations

4. Progress Updates: Gerrard Portal

- Support of Excavation
- Noise Barrier Updates

5. Progress Updates: Bain Emergency Exit Building (EEB)

- Support of Excavation
- Monitoring Update
- Upcoming Works

6. Action Items

7. Discussion: Gerrard Portal and Bain EEB

8. Appendices

- Bain EEB and Gerrard Portal Haul Routes



LAND ACKNOWLEDGEMENT

Metrolinx acknowledges that we connect communities by building and operating transit within the traditional lands of the Anishinaabe, the Haudenosaunee and the Wendat peoples, for whom these lands continue to have great importance.

Treaties between First Nations and governments cover these lands, and the promises contained in these Treaties remain relevant to this day.

Metrolinx and its employees are committed to understanding the history of these lands and the continued impacts of colonization and take responsibility for actions to advance reconciliation.

Metrolinx will continue to seek the knowledge, expertise and experience of Indigenous partners and commits to doing business in a manner that is built on a foundation of trust, respect, and collaboration.

SAFETY MOMENT: Stay Alert, Don't Get Hurt

Distractions are one of the leading causes of accidents. Whether it's checking a text while walking, wearing headphones in busy areas, or simply rushing to get somewhere, a moment of inattention can lead to injury.

Tips to stay alert:

- Pause before entering active work zones or crossing streets.
- Avoid using your phone while walking or navigating through high-traffic areas.
- Make eye contact with equipment operators and drivers before crossing their path.
- Stay aware of your surroundings—look out for trip hazards, overhead work, or sudden changes in your environment.

Remember: Your safety starts with awareness. A few extra seconds of caution can prevent a serious incident.



Session Guidelines

We greatly appreciate the community members who are here to take part in this public session.

To ensure that everyone can contribute to a positive and safe community experience, all participants shall adhere to the following *Code of Conduct*:

- Treat the presenters and participants with respect and understanding
- Acknowledge and appreciate the diversity of individuals and their situations
- Refrain from supporting or engaging in any form of discriminatory behaviour

Metrolinx is committed to fostering a safe and respectful environment.
We encourage respectful and constructive communication.

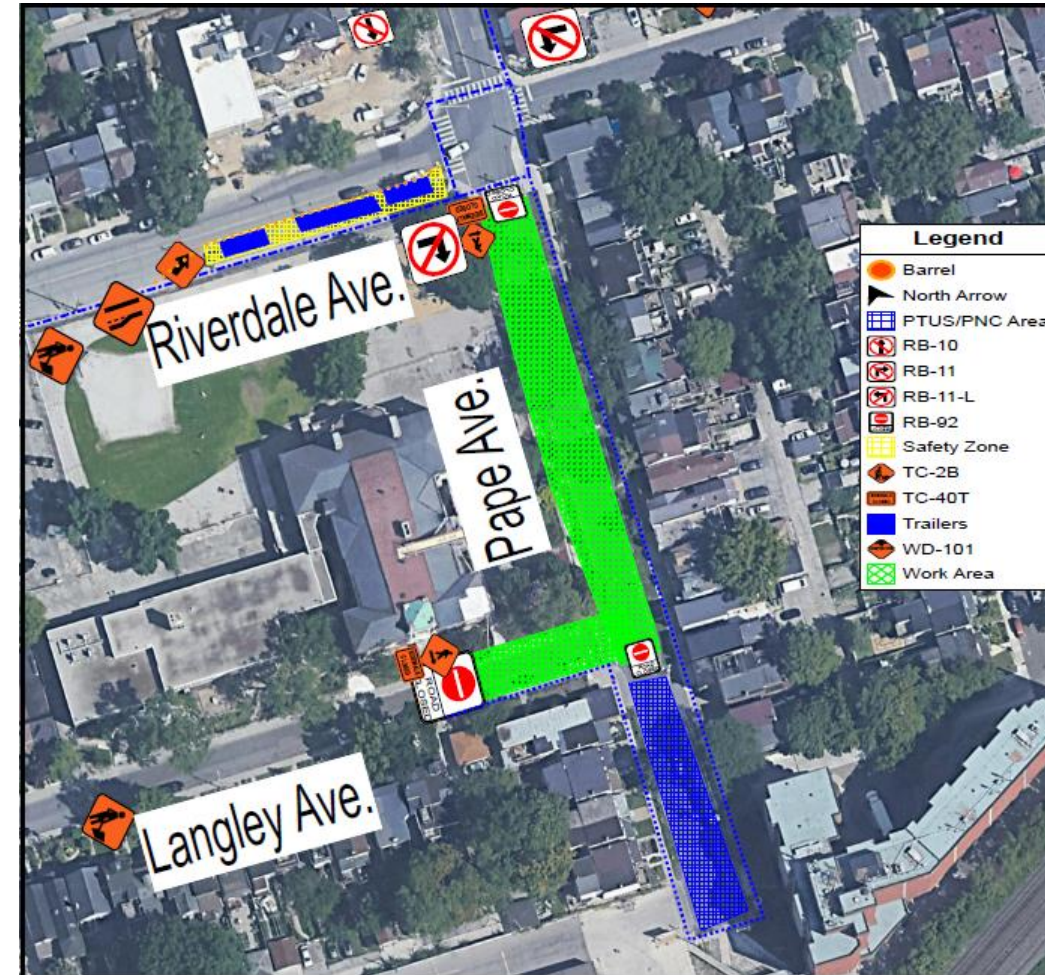
Pape Sewer Utility Relocations

Pape Sewer Utility Relocations

- On June 15, Phase C work was implemented (pictured).
- This phase is expected to last up to 4 months.

What to expect:

- TTC Route 72 resumes regular service on Riverdale Avenue in both directions and no longer uses the Dingwall Avenue detour.
- Crews will continue work on tie-in chambers and maintenance holes at Langley Avenue and will remove the old storm sewer on Langley Avenue and Pape Avenue.
- A full road closure remains in effect on Pape Avenue south of Riverdale Avenue and on Langley Avenue west of Pape Avenue.
- Pape Avenue south of Riverdale Avenue is closed, while Riverdale Avenue and Pape Avenue north of Riverdale remain open to two-way traffic.
- On Langley Avenue, the north sidewalk remains closed, while the south sidewalk remains open. On Pape Avenue, the east sidewalk between Riverdale Avenue and Poucher Street remains open, while the west sidewalk between Riverdale Avenue and Langley Avenue remains closed. A pedestrian connection on the east side of Pape Avenue remains open from Poucher Street to the pedestrian bridge.
- Once utility work is complete, road restoration will be carried out on Pape Avenue and Langley Avenue.



Phase C

Pape Sewer Utility Relocations

- Final surface paving, including the Pape Avenue and Riverdale Avenue intersection, is expected to take place in **September** as part of Phase D.

What to expect:

- To complete final paving and line painting, the intersection of Pape Avenue and Riverdale Avenue will be fully closed to vehicular traffic for up to three days over a weekend, from Friday to Sunday.
- Pedestrians will not be able to cross the street highlighted in green.
- Pape Avenue will remain closed south of Riverdale Avenue.
- Langley Avenue will remain closed west of Pape Avenue.
- TTC bus service will be detoured during the weekend closure. TTC will provide route details at a later date.



Phase D

Gerrard Portal AWII- Upcoming Works

#	Activity	Locations	Expected Start	Expected Duration	Impacts	Hours of Work	Mitigations
1	Phase C - Langley MH installation and tie-ins and Storm sewer removal	Gerrard Portal	June 2026	4 months	Vibration, noise, air quality, traffic	Mon - Fri 7:00 am - 7:00 pm Sat 9:00 am - 7:00 pm	Noise, vibration and air quality monitoring. Noise blankets. Traffic mitigations include designated hauling routes, traffic control personnel.
2	Phase D - Final Restoration	Gerrard Portal (Pape, Riverdale and Langley avenues)	Sept 2026	1 months	Vibration, noise, air quality, traffic	Mon - Fri 7:00 am - 7:00 pm Sat 9:00 am - 7:00 pm	Noise, vibration and air quality monitoring. Noise blankets. Traffic mitigations include designated hauling routes, traffic control personnel, and PDO.

Monitoring Summary – May 2026 (Pape Sewer Utility Relocations)

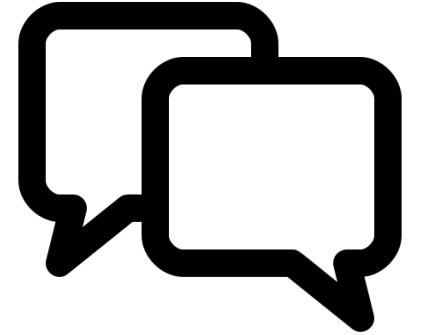
- Noise and vibration-related spikes were recorded at the monitors located at the Pape Avenue/Riverdale Avenue and Pape Avenue/Langley Avenue intersections.
- Noise-related increases were primarily associated with the usage of hydrovac trucks, sawing and backup alarms from construction equipment. The majority of spikes occurred due to the proximity of this work to the monitoring locations.
- Vibration-related spikes were recorded near Pape Avenue and Langley Avenue during site clean up and soil removal activities

To mitigate noise impacts, the following measures were implemented:

- Noise blankets were installed on-site.
- Electric saws are in use.
- Construction vehicles are equipped with broadband (white noise) back up alarms.

To mitigate vibration impacts, the following measures were implemented:

- Reduced use of heavy machinery wherever possible



Discussion:

Pape Sewer Utility Relocations

Gerrard Portal Updates

Gerrard Portal Support of Excavation Construction

- Construction continues in preparation for the tunnel boring machine launch shaft and excavation at the Gerrard portal site.
- Approximately 623 ground improvement piles out of 882 have been completed (71% as of June 12).
- Approximately 322 secant piles out of 324 have been completed (99% as of June 12).
- Work to increase the height of the existing noise walls on Pape Avenue and Langley Avenue may start as early as July.
- Support of excavation activities are projected to start on Pape Avenue south of Langley Avenue this summer.



Bain Emergency Exit Building (EEB) Progress Update

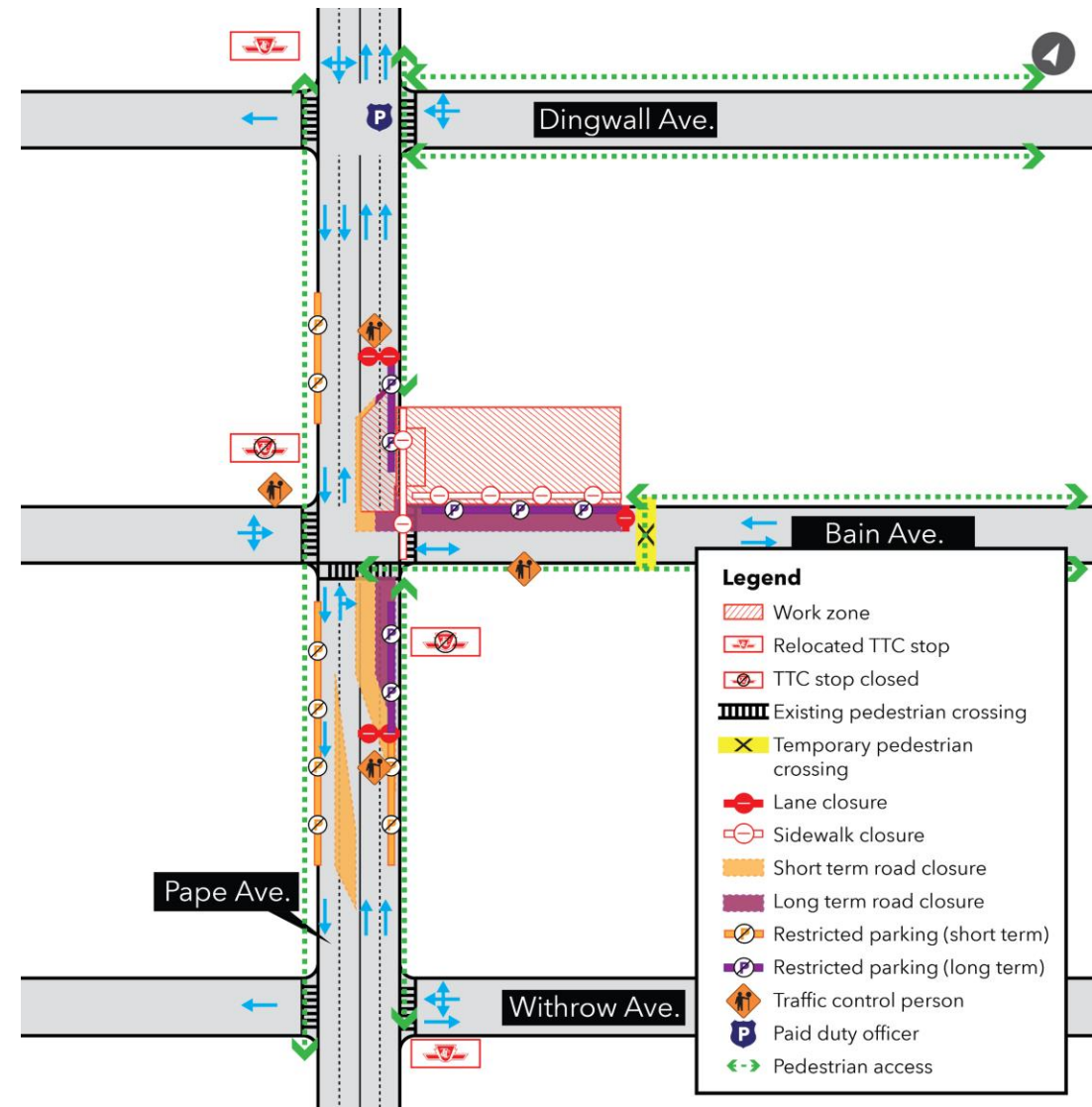
Bain Avenue EEB Support of Excavation Construction

- The next phase of construction will involve preparing the Bain emergency exit building (EEB) site for excavation work.
- Preparation for a ground improvement method called jet-grouting started in April and this work will last approximately 8 months.
- Soil testing has been completed, and major jet-grouting activities will begin before the end of June.
- The community can expect an increase in noise while these works are taking place.
- Noise barriers are installed, and environmental monitoring equipment is in place to proactively identify impacts to minimize long term disruptions to the community.
- After the ground improvement works, crews will begin working on the construction of the secant shoring walls to support the future excavation works.
- Work will take place weekdays from 7:00 a.m. to 7:00 p.m. and Saturdays 7:00 a.m. to 7:00 p.m.



Bain Avenue EEB Utility Relocation Work

- Crews are working to relocate Bell utilities at the intersection of Pape Avenue and Bain Avenue.
- Mobilization started on June 16, and this work is scheduled to be completed by June 26.
- The two northbound lanes along Pape Avenue between Dingwall Avenue and Withrow Avenue have been reduced but two-way traffic is being maintained.
- Traffic control personnel will be on-site to support safe vehicular and pedestrian movements when required.
- On-street parking is temporarily restricted on sections of Pape Avenue.
- Alternative parking is available in the Lane East Pape South Riverdale.
- Work is taking place weekdays from 7:00 a.m. to 7:00 p.m.



Monitoring Summary – May 2026 (Gerrard Portal and Bain EEB)

- Noise, vibration and outdoor air quality spikes were recorded near the Gerrard Portal and Bain EEB monitoring locations.
- Noise increases were primarily associated with hydrovac activities on-site.
- Vibration spikes occurred near the Bain EEB at 499 Pape Ave. due to sidewalk removal with a sledgehammer adjacent to the monitor.
- Outdoor air quality spikes were primarily caused by windy conditions, spreading of soil or materials, silo setup, and sidewalk removal near the monitor.

To mitigate these impacts, the following measures were implemented:

- Coordinated for water trucks to be on-site as needed.

Gerrard Portal & Bain Avenue EEB – In-Progress & Upcoming Works

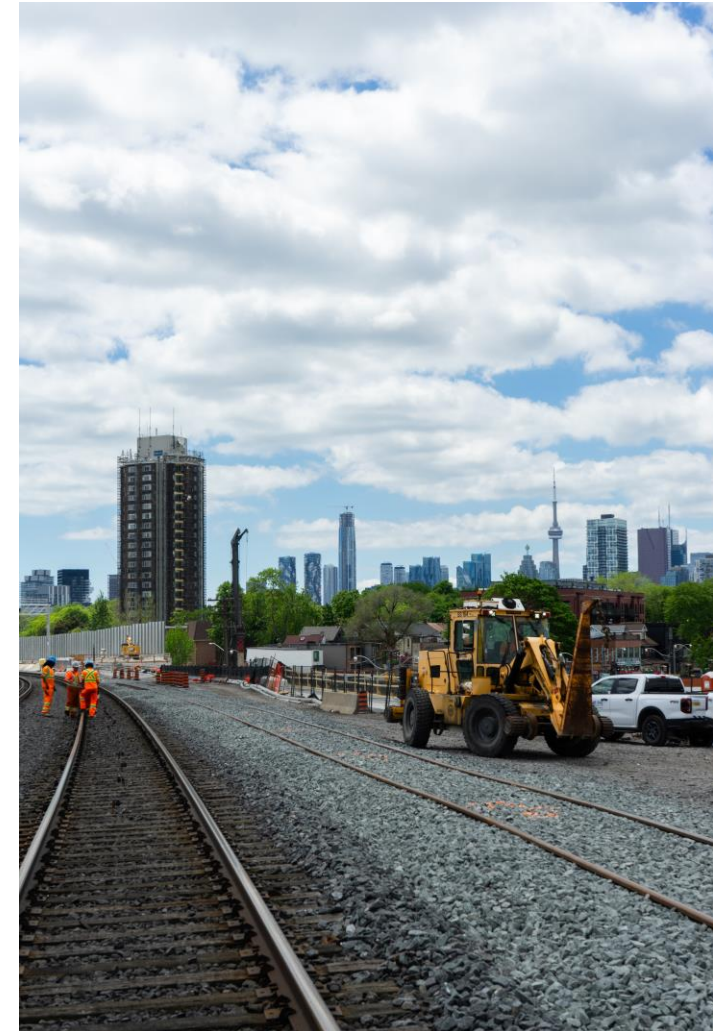
#	Activity	Locations	Expected Start	Expected Duration	Impact	Hours of Work	Mitigations
1	Support of Excavation	Gerrard portal	July 2025	15 months	Vibration, noise, air quality, traffic	Mon - Fri 7:00 am – 7:00 pm Sat 9:00 am – 7:00 pm	Noise, vibration and air quality monitoring. Dust mitigation includes mud mats, street spraying and sweeping. Traffic mitigations include designated hauling routes.
2	Excavation	Gerrard portal	July 2026	12 months	Vibration, noise, air quality, traffic	Mon - Fri 7:00 am – 7:00 pm Sat 9:00 am – 7:00 pm	Noise, vibration and air quality monitoring. Dust mitigation includes mud mats, street spraying and sweeping. Traffic mitigations include designated hauling routes.
3	Jet Grouting	Bain EEB	April 2026	8 months	Noise, vibration, air quality, traffic, lighting during the evening, street parking closures	Mon - Fri 7:00 am – 7:00 pm Sat 7:00 am – 7:00 pm	Noise, vibration and air quality monitoring. Temporary fencing with mesh dust screens. Dust mitigation includes street spraying and sweeping.
4	Bell Utilities Relocation	Bain EEB	June 16	2 weeks	Lane closures	Mon - Fri 7:00 am – 7:00 pm	Traffic control persons, paid duty officers.

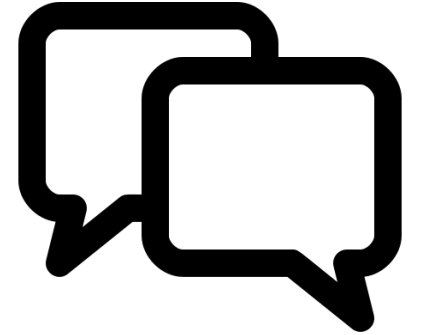
Action Items

#	Action Item	Response/Resolution	Status
1	PNC to investigate the clogged sewer drain located on the east side of Pape Avenue adjacent to the 369 Pape Avenue TSHC building.	Metrolinx Response: Following recent adjustments to site fencing along Pape Avenue, the catch basin adjacent to 369 Pape Avenue (TSHC) now falls within PNC’s designated work zone. PNC has assumed responsibility for ongoing inspection, cleaning, and maintenance of this catch basin. Regular monitoring will ensure the drain remains clear and functional, minimizing the risk of blockages and associated impacts to the area.	Completed
2	PNC to investigate reported sightline concerns for vehicles exiting Bain Avenue and turning southbound onto Pape Avenue due to construction crew vehicles parked on the east side of Pape Avenue.	Metrolinx Response: PNC has directed on-site traffic control personnel to proactively address sightline and safety concerns for vehicles exiting Bain Avenue and turning south onto Pape Avenue, particularly regarding construction vehicles parked on the east side. Traffic control is available 24/7 to support safe vehicle movements and to respond promptly to resident concerns, ensuring ongoing attention to this matter.	Completed
3	Metrolinx to review the request to share environmental monitoring reports with impacted Bain Avenue residents.	Metrolinx Response: While it is not standard practice to distribute environmental monitoring reports to the public due to the complex nature of the data and potential for misinterpretation, Metrolinx is committed to transparency with the community. We will continue to provide clear, accessible summaries of environmental data, including notification of any exceedances in response to resident feedback about the impacts they are experiencing.	Completed
4	PNC to contact Toronto Police 55 Division regarding concerns that Paid Duty Officers (PDOs) at the intersection of Pape Avenue and Dingwall Avenue are not consistently assisting pedestrians crossing east-west along Pape Avenue.	Metrolinx Response: PNC has formally escalated community concerns regarding inconsistent pedestrian assistance by Paid Duty Officers (PDOs) at the intersection of Pape Avenue and Dingwall Avenue to Toronto Police Service 55 Division’s Central Paid Duty Office. PNC will continue to advocate for enhanced engagement by PDOs to ensure pedestrian safety and consistent support for pedestrians at this intersection during construction activities.	Completed

Ontario Line Update: Gerrard CLC Launch & Bain EEB Transition

- Starting as early as August 2026, the Pape Riverdale CLC will be phased out, and the new **Gerrard CLC** will launch.
- The Gerrard CLC will include content for both Gerrard Station and the Gerrard portal, as well as updates from the Pape-Riverdale area.
- The Bain Emergency Exit Building (EEB) section of the meeting will be transitioned into the **existing Pape-Danforth & Sammon CLC**.
- This change is being made as Ontario Line construction activity shifts from Early Works throughout the rail corridor to station construction for Gerrard Station.
- Metrolinx will keep CLC members updated on the status of this transition.





Discussion:

Gerrard Portal &
Bain Emergency Exit Building
Progress Updates

Appendices

Bain and Gerrard Portal Haul Routes

