



# LAND ACKNOWLEDGEMENT

Metrolinx acknowledges that we connect communities by building and operating transit within the traditional lands of the Anishinaabe, the Haudenosaunee and the Wendat peoples, for whom these lands continue to have great importance.

Treaties between First Nations and governments cover these lands, and the promises contained in these Treaties remain relevant to this day.

Metrolinx and its employees are committed to understanding the history of these lands and the continued impacts of colonization and take responsibility for actions to advance reconciliation.

Metrolinx will continue to seek the knowledge, expertise and experience of Indigenous partners and commits to doing business in a manner that is built on a foundation of trust, respect, and collaboration.

## Session Guidelines

We greatly appreciate the community members who are here to take part in this public session.

To ensure that everyone can contribute to a positive and safe community experience, all participants shall adhere to the following *Code of Conduct*:

- Treat the presenters and participants with respect and understanding
- Acknowledge and appreciate the diversity of individuals and their situations
- Refrain from supporting or engaging in any form of discriminatory behaviour

**Metrolinx is committed to fostering a safe and respectful environment.**

**We encourage respectful and constructive communication.**

# **Construction Liaison Committee**

## **Pape-Cosburn & Minton Place**

**November 19, 2025**

# AGENDA

**1. Minton Place Tunnel Portal Works (5 mins)**

- Progress Update
- Eight Week Look-Ahead
- Exceedances

**2. Don Valley Crossing Bridge Construction (5 mins)**

- Progress Update

**3. Discussion:** Minton Place Portal Works and Don Valley Crossing Bridge Construction (10 mins)

**4. Cosburn Station (10 mins)**

- Pape-Gowan Road Restoration
- Progress Update
- Eight Week Look-Ahead
- Exceedances

**5. Discussion:** Cosburn Station and Pape-Cosburn Traffic Staging (10 mins)

**6. Action Items (10 mins)**

# **Minton Place Tunnel Portal Works**



## Minton Portal - October to November Progress

- High-performance turf reinforcement mats and a mechanical anchor installation has commenced on the East Slope.
- Drainage work is completed at the bottom of the West Slope.
- Mobilization and preparation is underway for the headwall secant pile works.



# Truck Traffic at Minton Place

Scope of Work	Piling and Deep Excavation	Stage 2 Slope Stabilization Tie Back Anchor Installation
Approximate Start Date	Nov-25	Mar-26
Approximate Duration	13 months	6 months
Anticipated Daily Truck Volume (excluding pick up trucks)	12 (Piling)* and 50 (Excavation)*	10

**\* Please note:**

- All truck traffic numbers are approximate in nature.
- Due to site space constraints, piling and excavation will not happen concurrently, but will alternate over the total 13-month duration.
- Each daily truck represents a single trip in and out of site. Trucks will queue off site whenever possible and depart for site as needed. Multiple trips will be conducted in a day by a single vehicle/operator.

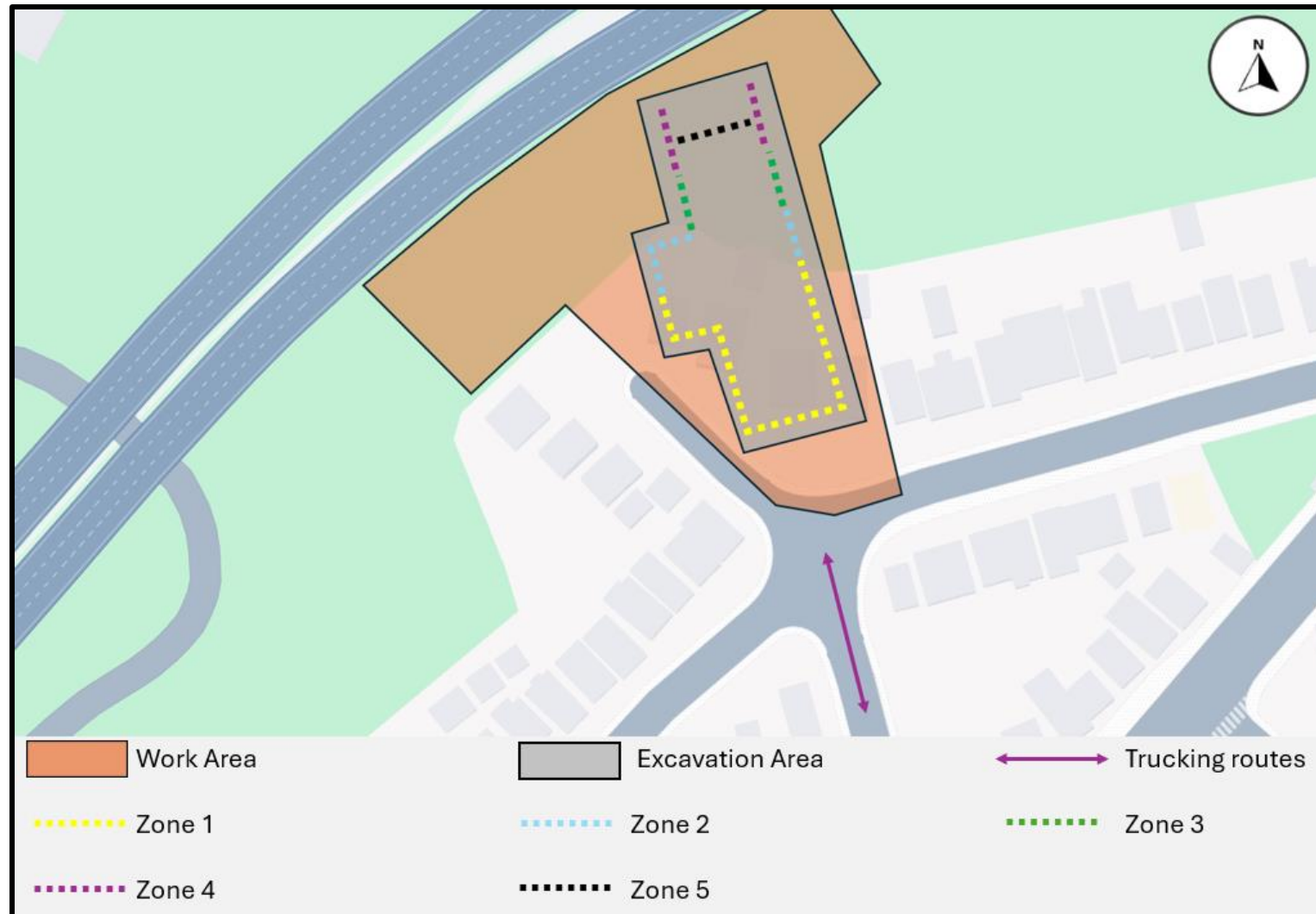
# Eight Week Look-Ahead

#	Activity	Location	Expected Start	Expected Duration	Impact	Hours of Work	Mitigations
1	Zone 1 Secant Pile Installation	Minton Portal	December 18, 2024 (Ongoing)	1 year	Vehicular traffic, vibration, noise	7:00 am 5:30 pm**	Monitoring of traffic control plans, traffic control personnel, vibration monitoring, noise monitoring  Echo barriers were installed since previous piling scope.
2	Slope soil nails and anchor, slope works and Mechanical Anchors	Minton Portal	December 15, 2024 (Ongoing)	11 months			
3	Zone 2,3,4 Secant Pile Installation	Minton Portal	December 15, 2025 (To be started)	1 year			
4	Portal Excavation	Minton Portal	December 1, 2025 (To be started)	1 Year			

**Please see a map of the Zones noted above in the next slide.**

*\*\* Please note that, given the unpredictable nature of subsurface conditions, extended hours may be required on weekdays. Crews will do their best to complete construction activities by 5:30pm, but extended hours until 7:00pm may be required at times. Saturday works will occur from 9:00am to 7:00pm.*





# Exceedances October 2025

#	Day/Time of Exceedances	Detail	Location	Source	Corrective Action	Complaint Received?
1	October 10	Noise	Minton Portal	Delivery of 53mm clear stone.	Deliver the clear stone more quietly when placing it on site	No
2	October 20	Vibration	Minton Portal	Demobilizing the crane.	Echo barriers were installed on the site hoarding	No

# Bridge Construction (Don Valley Crossing)

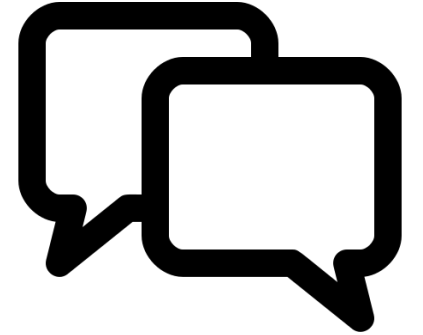
## Don Valley Crossing – October to November Progress

- Temporary bridge works have been completed, and the bridge has been certified for use, allowing access to the Pier A1 area through Pier A2.
- At Pier A1, construction of the access road and drill rig pad is underway in preparation for the upcoming secant pile wall drilling operations.
- At Pier A2, the tower crane has been assembled in preparation for upcoming pier construction activities. The pile cap area has been backfilled, and the approach to the temporary bridge on this side has been completed.
- At Pier A3, mobilization activities have started, and on-site fabrication of rebar cages has commenced in preparation for the upcoming drilling operations in this area.
- At Pier A4, rebar installation and formwork have been completed, and the pile cap has been successfully poured.
- At Pier A5, secant pile wall installation is continuing.



# Eight Week Look Ahead

#	Activity	Location	Expected Start	Expected Duration	Impact	Hours of Work	Mitigations
1	Access road and drilling pad construction	Don Valley Crossing (Pier A1)	August 2025	Four months	Noise, Vibration, Air Quality	7:00 am – 5:30 pm	Monitoring noise and air quality levels.  Enacting noise mitigation controls and dust suppression as required.
2	Pier Construction	Don Valley Crossing (Pier A2)	November 2025	Six months			
3	Pier Piling	Don Valley Crossing (Pier A3)	November 2025	Six weeks		7:00 am – 8:00 pm	
4	Secant Pile Wall tieback installation	Don Valley Crossing (Pier A5)	November 2025	Three months		7:00 am – 5:30 pm	
5	Excavation, concrete chipping and mud slab pour	Don Valley Crossing (Pier A3)	December 2025	One month			
6	Pile Cap rebar and formwork installation	Don Valley Crossing (Pier A3)	January 2026	Two months			



## **Discussion:**

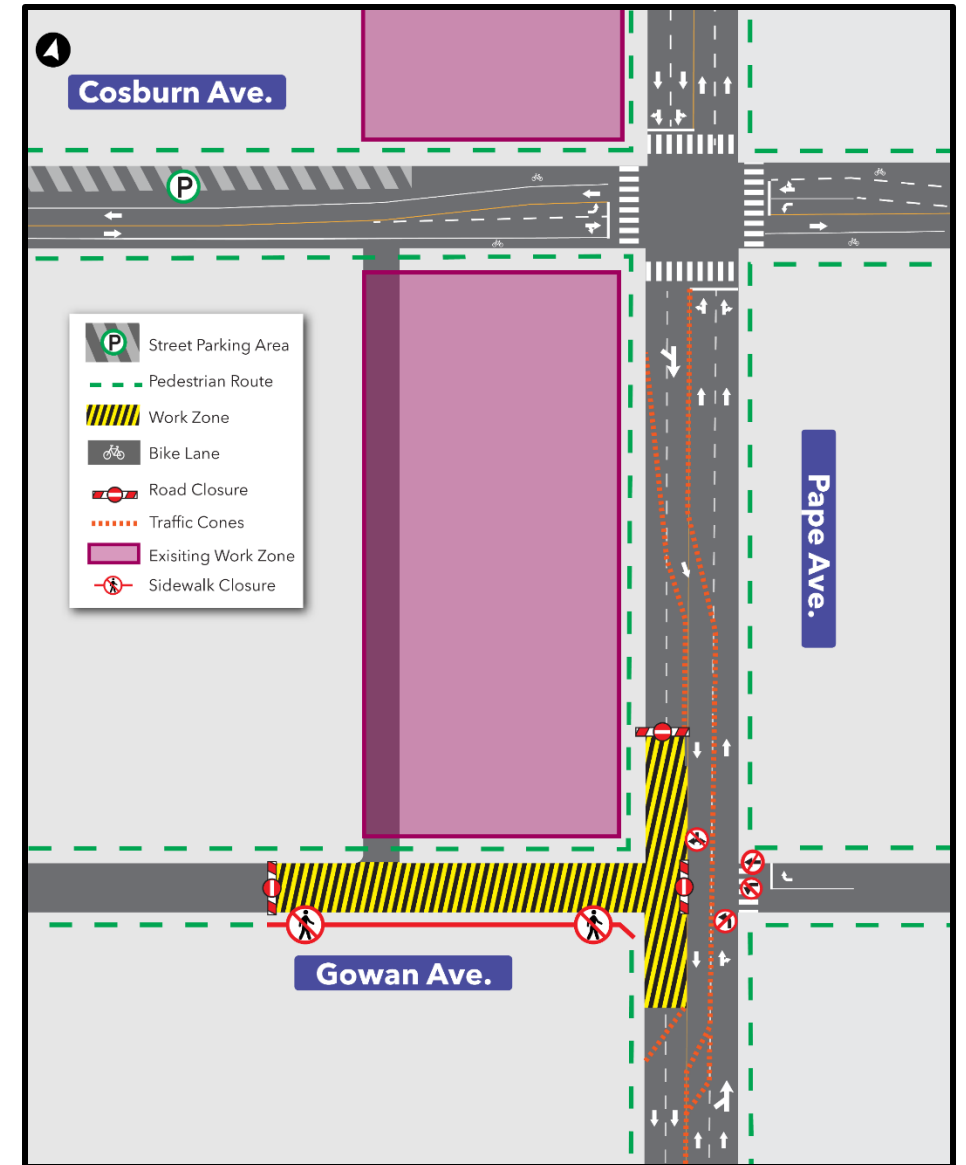
Minton Place Tunnel Portal Works &  
Bridge Construction (Don Valley Crossing)



# **Cosburn Station Works**

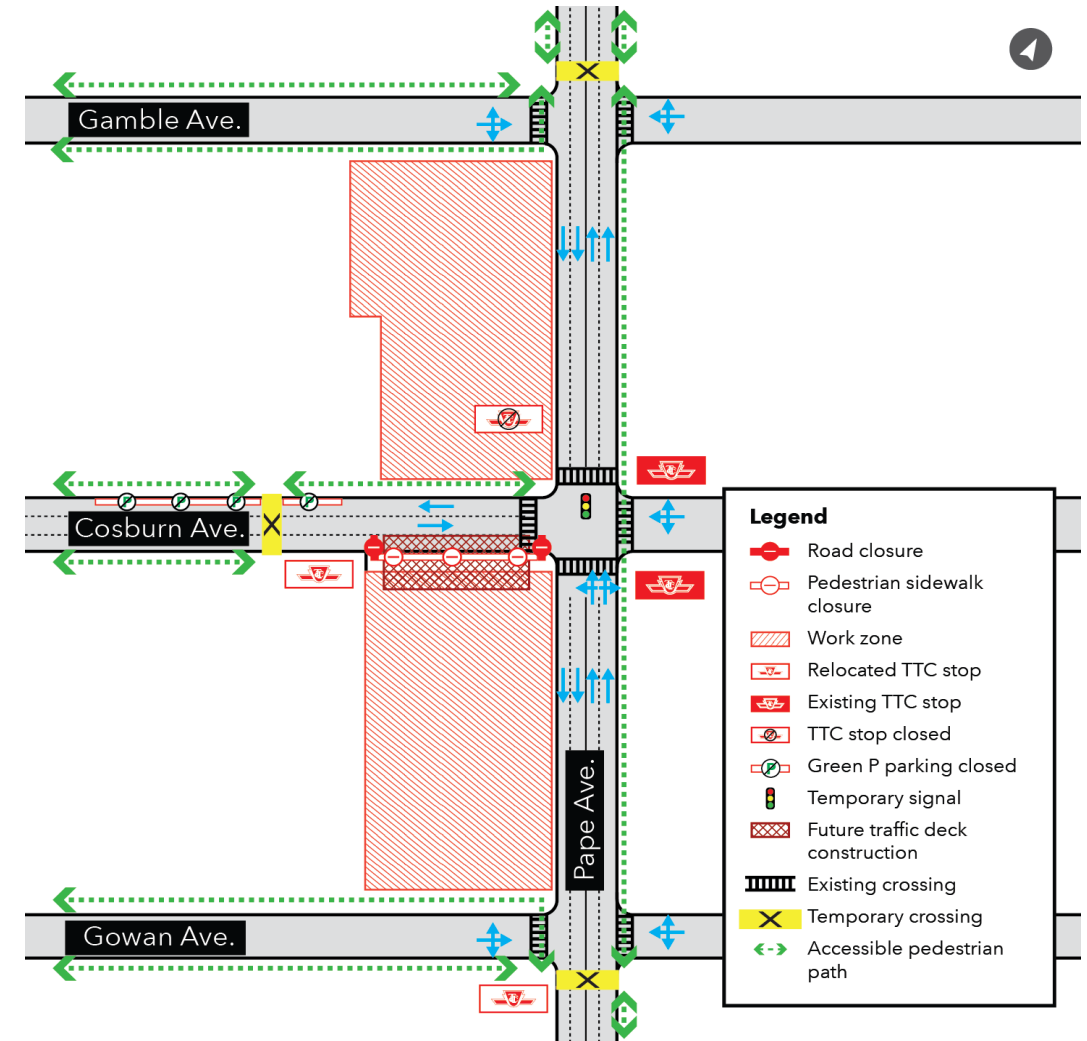
## Pape - Gowan Road Restoration

- Road and sidewalk restoration work is done following the completion of utility relocations.



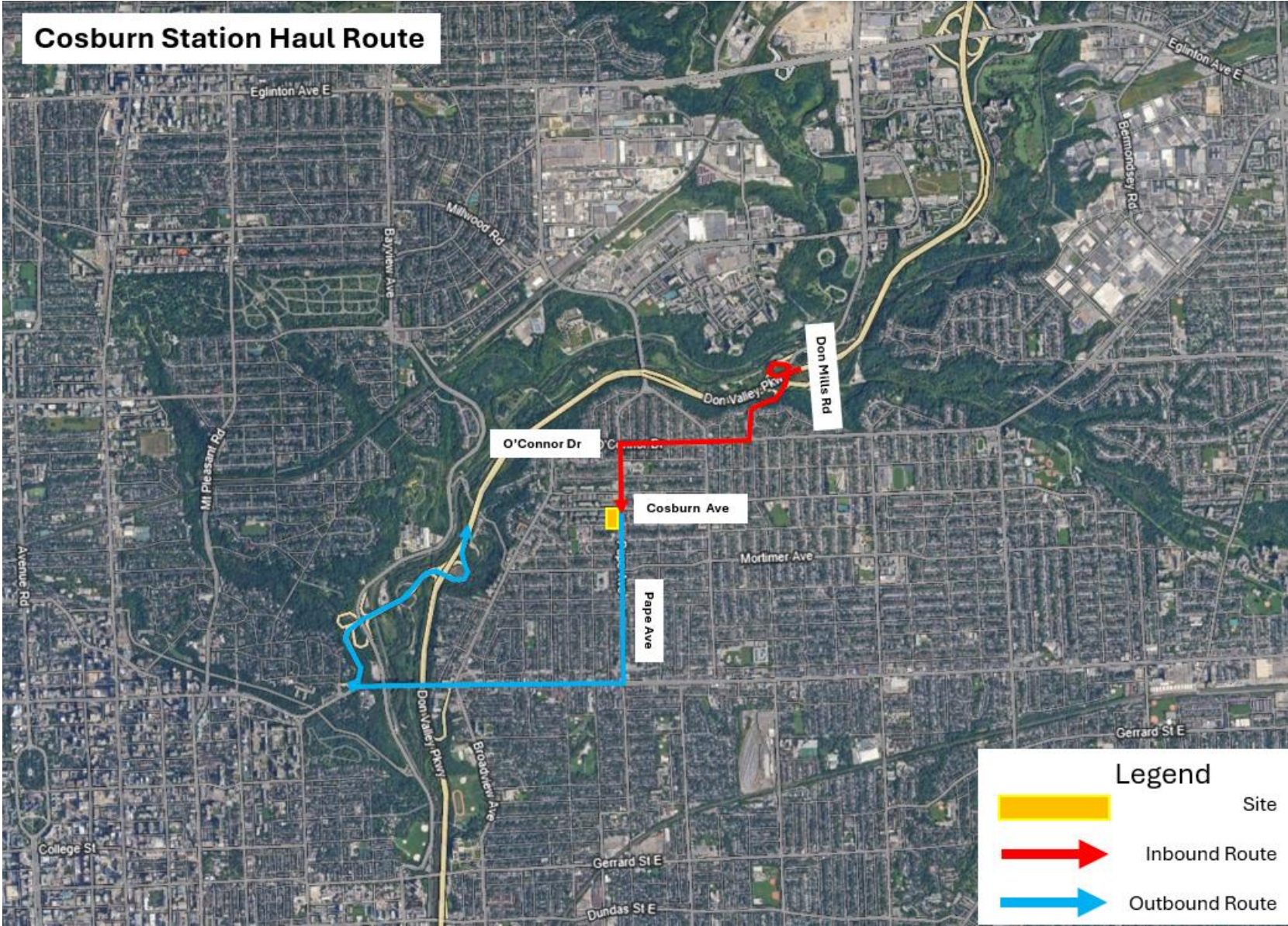
## What's next : SOE Traffic Impacts 2025/2026

- By spring 2026, temporary crosswalks will be built for pedestrians to cross Pape Avenue at the north end of the Pape Avenue and Gamble Avenue intersection and the south side of the Pape Avenue and Gowan Avenue intersection.
- Temporary sidewalk closures will be required while these crossing are built.
- To maintain two-way traffic on Cosburn Avenue, a temporary road on the south side of Cosburn Avenue will be built.
  - The eastbound lane of Cosburn Avenue and the sidewalk from 101 Cosburn Avenue to Pape Avenue will close.
- The sidewalk along Pape Avenue from Gowan Avenue to Gamble Avenue will close.
- Two-way traffic and the sidewalk on the northside of Cosburn Avenue will be maintained for the duration of the closure.
- Permitted parking on the north side of Cosburn Avenue in front of 100 Cosburn will be impacted.
- The installation for the permanent hoarding will begin before the end of 2025.



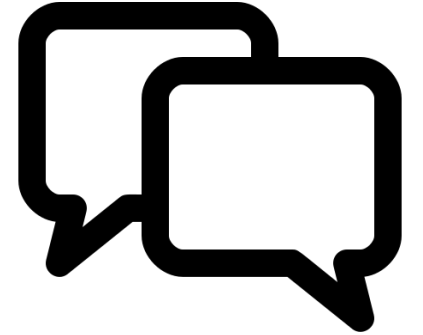
Map of traffic impacts on Pape Avenue & Cosburn Avenue





# Cosburn Station – Upcoming Works

#	Activity	Location	Expected Start	Expected Duration	Impact	Hours of Work	Mitigations
1	Tree/ vegetation removal	Cosburn site	Fall 2025	3 to 5 days	Noise	8:00 am - 3:00 pm	N/A
2	Support of Excavation	Cosburn site	Dec 2025	20 months	Vibration, noise, air quality, traffic, lane and sidewalk closures	7:00 am - 7:00 pm	Noise, vibration and air quality monitoring. Permanent hoarding. Dust mitigation includes street spraying and sweeping, work stoppage during high winds.



# Discussion:

## Cosburn Station Works



# Action Items

#	Questions Asked / Action Item	Response/Resolution	Due Date / Status
1	<b>Minton Place:</b> Residents expressed a lack of information on how they should file a damage claim. One resident requested that Metrolinx provide a written document that details the steps they should take for filing a damage claim.	Residents that wish to make a damage claim, are requested to contact the Ontario Line community engagement office. A staff will the request that the resident fill out details in an intake form. This will be sent to Metrolinx claims department and to the appropriate constructor for investigation. Please note that claims can take some time to process.	Complete
2	<b>Pape-Cosburn:</b> The representative of an elected official requested a summary of the preconstruction condition survey (PCS) activity carried out by Metrolinx contractors in the Pape-Cosburn area.	Ontario Line community engagement provided the elected official's office with a summary of completed, pending, and refused PCS offers in the Pape-Cosburn area	Complete
3	<b>Pape-Cosburn:</b> A stakeholder requested if it was possible for Metrolinx contractors to time the movement of heavy equipment to and from the Pape-Cosburn and Pape-Gowan areas so that they do not coincide with arrival and departure of students to nearby schools.	Metrolinx will take this request for consideration with its contractors. Stakeholders will be updated on the matter.	In Progress

# Appendix

## Support of Excavation

- The next phase of work at Cosburn will involve preparing the site for excavation.
- Crews will conduct a ground improvement process called jet grouting.
  - Jet grouting is a soil stabilization technique that involves injecting grout deep into the soil.
  - The grout replaces the existing soil and hardens, adding stability near where excavation work will occur.
- Jet grouting will take place for approximately four months and work will be conducted weekdays from 7 a.m. to 7 p.m.
- Environmental monitoring equipment will be on-site to assess levels of noise, vibration and dust from trucks and heavy construction equipment that is expected during construction.



*Cosburn Station site south block - October 2025*