



Ontario Line Thorncliffe Park Construction Liaison Committee

December 24, 2025

LAND ACKNOWLEDGEMENT

Metrolinx acknowledges that we connect communities by building and operating transit within the traditional lands of the Anishinaabe, the Haudenosaunee and the Wendat peoples, for whom these lands continue to have great importance.

Treaties between First Nations and governments cover these lands, and the promises contained in these Treaties remain relevant to this day.

Metrolinx and its employees are committed to understanding the history of these lands and the continued impacts of colonization and take responsibility for actions to advance reconciliation.

Metrolinx will continue to seek the knowledge, expertise and experience of Indigenous partners and commits to doing business in a manner that is built on a foundation of trust, respect, and collaboration.



AGENDA

1. Welcome

- Land Acknowledgement
- Agenda
- Safety moment

2. Advanced Works

- Overview
- Advanced works update
- Temporary driveway construction
- Demolitions

3. West Don Crossing

- November progress
- Eight-Week lookahead

4. Beth Nealson Underpass

- November progress
- Eight week lookahead

5. Don Valley Crossing

- November progress
- Eight week lookahead

6. Elevated Guideway and Thorncliffe Park Station

- Ongoing construction activities
- Upcoming construction activities
- Eight-week lookahead
- January lookahead

7. Operations, Storage, and Maintenance Facility

Safety near construction sites

- Blind spots aren't just for public vehicles – the larger the equipment, the larger the blind spots.
- Heavy equipment may operate near sidewalks, intersections, and crosswalks, including:
 - Loaders
 - Excavators
 - Dump trucks
 - Skid steers
- Stay Safe Around Construction Zones
 - Drivers: Proceed with caution in public areas near construction.
 - Pedestrians & Cyclists: Follow sidewalk closure signage and keep a safe distance from heavy equipment.
- It's important for all members of the public to be vigilant and remember just because you can see them doesn't mean they can see you.



Construction Update: Advanced Works

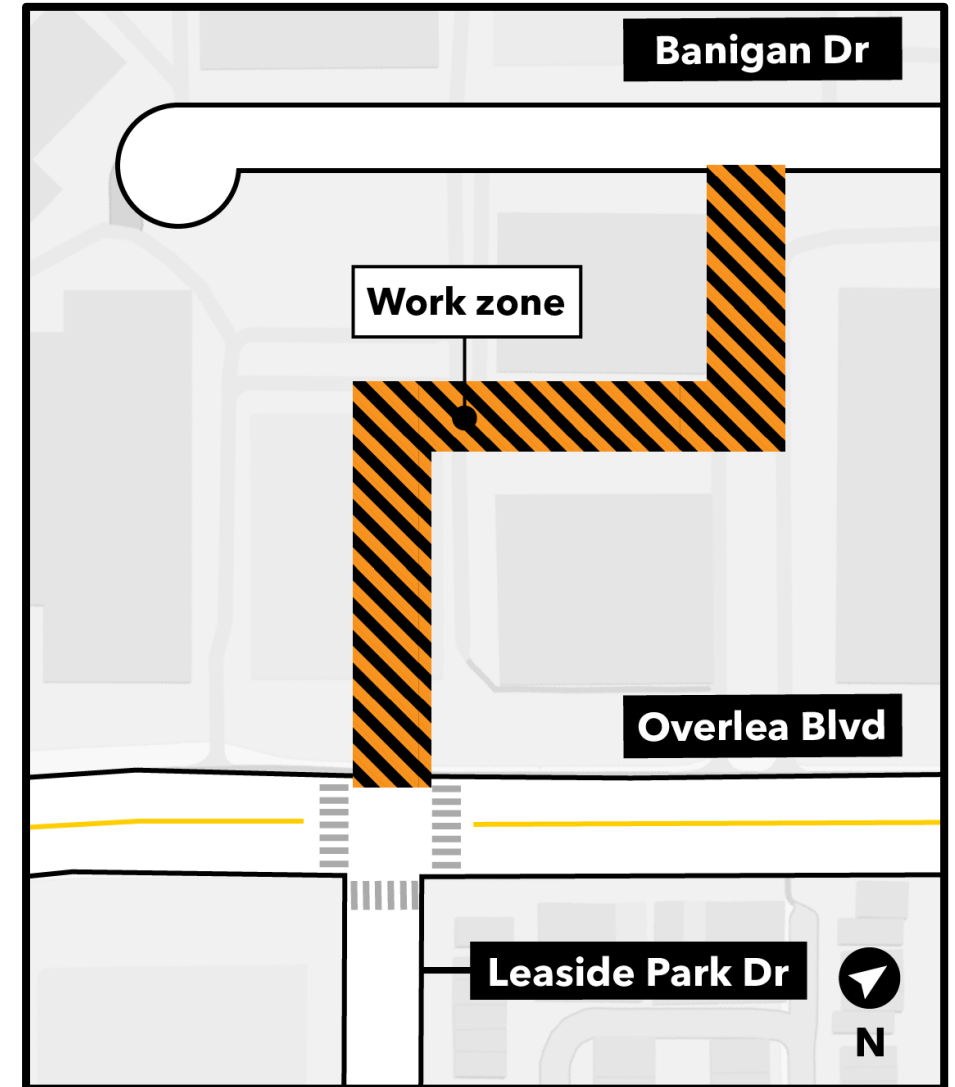
Advanced Works update

- Watermain and sewer connections were completed on Overlea Boulevard and Millwood Road in November 2025.
- As of December 22, 2025, paving across the Advanced Works work zone on Overlea Blvd. and Millwood Road is now complete
- The watermain repair required at the North East corner of Millwood and Overlea was completed on December 18 2025.
- All remaining works will be completed within localized traffic control plans in coordination with the EGS/TGP team.
- Remaining works on Overlea will include the following:
 - Finalising of the multiuse pathway at the South East corner of Leaside Park Drive and Overlea Boulevard.
 - Addressing of minor deficiencies throughout the winter months.



10 Overlea Boulevard Driveway Construction

- In December, construction began for a temporary driveway on the north side of Overlea Boulevard adjacent to Leaside Park Drive.
- The expected completion timeline for the driveway is January 2026, and most of the associated construction activities will take place on private lands.
- Future construction that will require roadway access, includes traffic signal adjustments and revised line painting on Overlea Boulevard.
- This driveway will support ongoing construction of the Operations, Maintenance and Storage Facility and the elevated guideway along Overlea Boulevard.
- It will also provide emergency services access and serve as a secondary access point for the Islamic Society of Toronto during Ontario Line construction.



Banigan Drive Building Demolition

- Structural demolition for 7-11 Banigan Drive is complete. Sorting and removal of building materials is currently underway.
- Demolition is complete for 14-20 Banigan Drive.
- The next demolition planned is for 1-3 & 6-12 Banigan in January 2026
- Work hours for demolition is on weekdays between 7 a.m. – 7 p.m.
- Demolition work will continue into Q1 of 2026.
- Vibration, noise and dust monitors remain in place to ensure effective mitigation where possible.

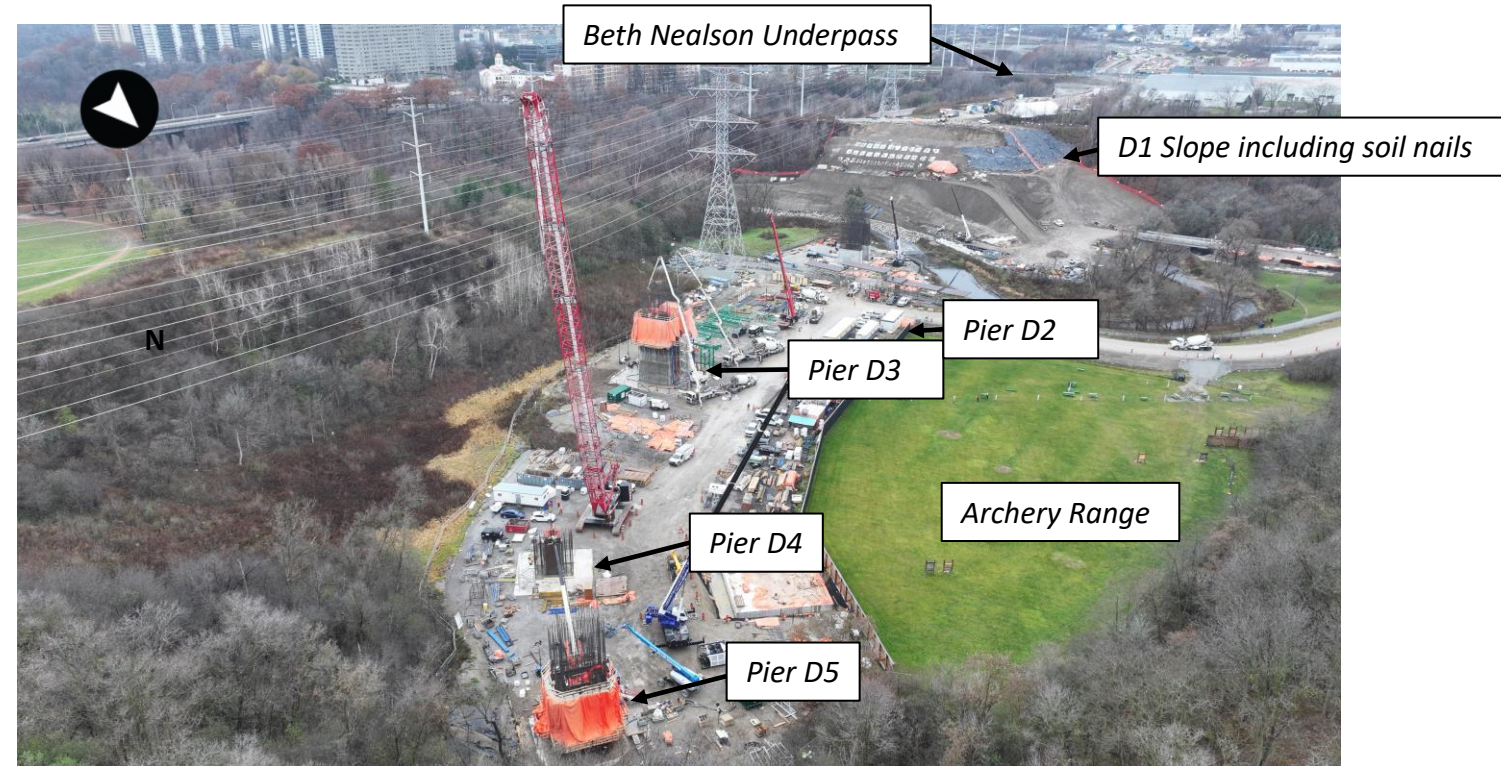


West Don Crossing

West Don Crossing - November Progress

Completed work:

- Drilled, installed, capped, tested, and locked-off the next 2 rows of soil anchors on the southern portion of the D1 Slope. 4 out of 6 rows are completed as of now.
- Drilled and installed the first 3 rows of soil nails in the center of the D1 Slope.
- Placed shotcrete over the first 2 rows of soil nails.
- Excavated the bench to lower elevations as required to facilitate the installation of the soil anchors and soil nails
- Prefabricated rebar cages for the soil anchor caps on the D1 Slope
- The first lift out of five for D2 has been completed. A lift involves pouring concrete vertically to construct the piers.
- The third lift out of five for Pier D3 has been completed.
- The second lift out of seven for Pier D5 has been completed.



West Don Crossing construction area - November 26, 2025

Eight Week Lookahead: December 18, 2025, to March 31, 2026

#	Activity	Location	Expected Start	Expected Duration	Impact	Hours of Work	Mitigations
1	Soil nailing & anchor	West Don Crossing	Began July (ongoing)	Until late April 2026	Vibration, noise, and air quality	7:00 am - 5:30 pm	Vibration monitoring, noise monitoring, air quality monitoring
2	Benching of the slope		Began September (ongoing)	Until late April 2026		7:00 am - 5:00 pm	
4	Construction of D2, D3, D4 and D5 piers		Began September (ongoing)	D2: Until late February 2026 D3: Until mid January 2026 D4: Until late March 2026 D5: Until late February 2026		7:00 am - 5:30 pm	

Beth Nealsen

Underpass

Beth Neilson Underpass - December Lookahead

- Works completed in November primarily involved site preparation for deliveries for piling equipment. Active dewatering using sump pumps is ongoing.
- Intermittent lane closures are expected on January 7th to the 9th from 7:00 am to 5:00 pm, for the removal of streetlights. Further Lane closures are planned from January 15th to the end of February for the East caisson wall installation.
- A total of approximately 30 trees will be removed from the area behind the property at 255 Wicksteed Avenue and also some beside 51 Beth Neilson Drive to optimize the construction area. These works are scheduled for Saturday December 13th.
- A new sidewalk will be constructed on the south side of Wicksteed Avenue to facilitate two-way pedestrian traffic in late winter 2026 or early spring 2026.



Eight Week Lookahead: December 18, 2025, to March 31, 2026

#	Activity	Location	Expected Start	Expected Duration	Impact	Hours of Work	Mitigations
1	Drill pad construction for track wall	East of Beth Neilson Drive	Began July (Ongoing)	6 months Until Mid May, 2026	Vibration, noise, air quality	7:00 am - 5:30 pm	Vibration monitoring, noise monitoring, air quality monitoring
2	Test Piling	East of Beth Neilson Drive	2nd week of December 2025	1 week	Vibration, noise, air quality	7:00 am - 5:30 pm	Vibration monitoring, noise monitoring, air quality monitoring
3	Caisson Installation for track wall	East of Beth Neilson Drive	2 nd week of January 2026	5 months Until Mid May, 2026	Vibration, noise, air quality	7:00 am - 5:30 pm	Vibration monitoring, noise monitoring, air quality monitoring
4	East Wall piling	North Bound Lane Beth Neilson Drive	3 rd Week of January 2026	6 weeks - Until 1 st week of March	Vibration, noise, air quality, Increased traffic	7:00 am - 5:30 pm	Vibration monitoring, noise monitoring, air quality monitoring one lane closure on Beth Neilson drive

Don Valley Crossing Construction Updates

Don Valley Crossing –November to December Progress

- At Pier A1, soil haulage, grading, and compaction have been completed, and the crane pad has now been constructed to begin the secant pile installation. Additionally, the pedestrian pathway has been realigned and asphalted.
- At Pier A2, with the tower crane now fully assembled, LVB has advanced into active pier construction. The recent concrete pour for Lift 1 has been completed, and the team is now preparing for the upcoming Lift 2 pour, with rebar installation currently underway.
- At Pier A3, caisson drilling is actively underway and is expected to be completed by December. Once drilling and concrete works are finalized, foundation construction for Pier A3 will begin.
- At Pier A4, pile caps have been completed, followed by successful backfilling and soil compaction around the pier. The area is now on hold and will remain idle until structural works resume in the next phase of construction.
- At Pier A5, work continue on the secant pile wall and has advanced to drilling and installing the tiebacks. Works also include shotcrete lining and excavation activities.



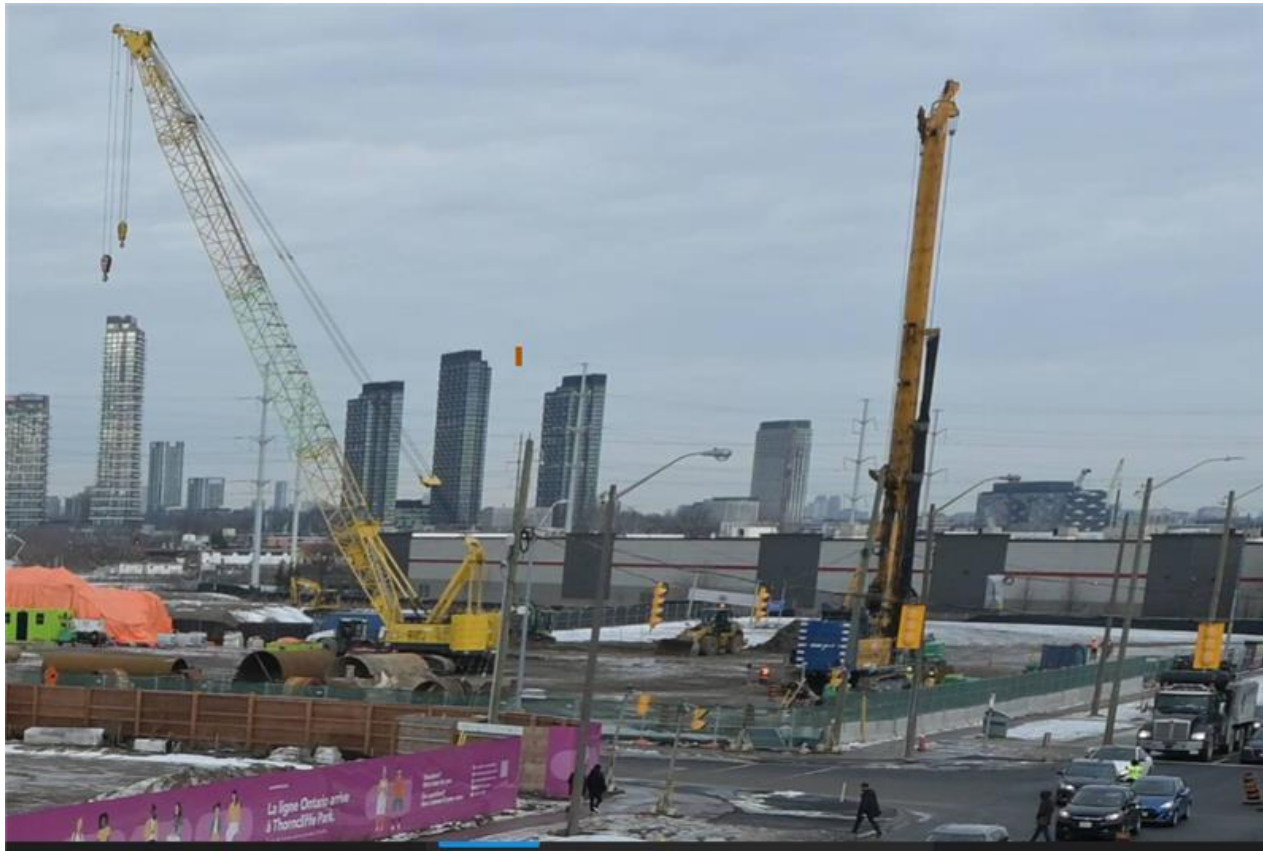
Eight Week Look Ahead

#	Activity	Location	Expected Start	Expected Duration	Impact	Hours of Work	Mitigations
1	Secant Pile Wall tieback installation	Don Valley Crossing (Pier A1)	December 2025	Three months	Noise, Vibration, Air Quality	7:00 am - 5:30 pm	Monitoring noise and air quality levels. Enacting noise mitigation controls and dust suppression as required.
2	Pier Construction	Don Valley Crossing (Pier A2)	November 2025	Six months			
3	Excavation, concrete chipping and mud slab pour	Don Valley Crossing (Pier A3)	December 2025	One month			
4	Pile Cap rebar and formwork installation	Don Valley Crossing (Pier A3)	January 2026	Two months			
5	Secant Pile Wall tieback installation	Don Valley Crossing (Pier A5)	December 2025	Three months			

Elevated Guideway and Station Works

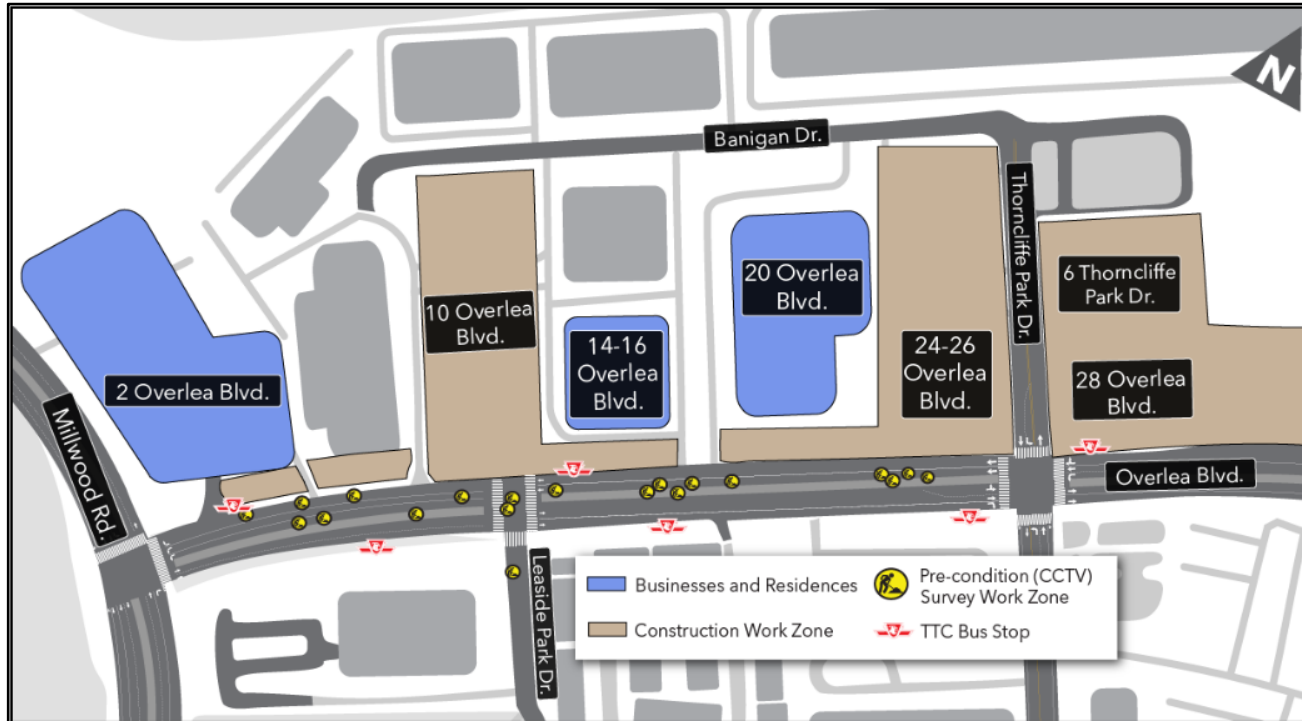
Current Construction Activities

Piling has begun at 28 Overlea Boulevard for the construction of the future elevated guideway and Thorncliffe Park Station. Two piles have been completed.



28 Overlea Boulevard looking north east - December 18, 2025

Pre-condition subsurface utilities investigation on Overlea Boulevard



To enable future construction activities for the Ontario Line, crews will conduct pre-condition subsurface utility investigations along Overlea Boulevard between Millwood Road and Thorncliffe Park Drive.

- Investigations consist of lifting existing maintenance hole covers and using a camera to inspect underground utilities.
- Each investigation is approximately 2-3 hours and will be done sequentially.
- The work is scheduled to begin as early as January 6, 2026, and is expected to take four days to complete.
- Temporary lane closures and sidewalk closures are required for crews to safely carry out this work.
- Traffic control personnel will be on-site managing traffic flow, as required.
- All bus stops will remain open and accessible throughout the work.
- Safety barriers will be placed around the maintenance hole while work is underway.

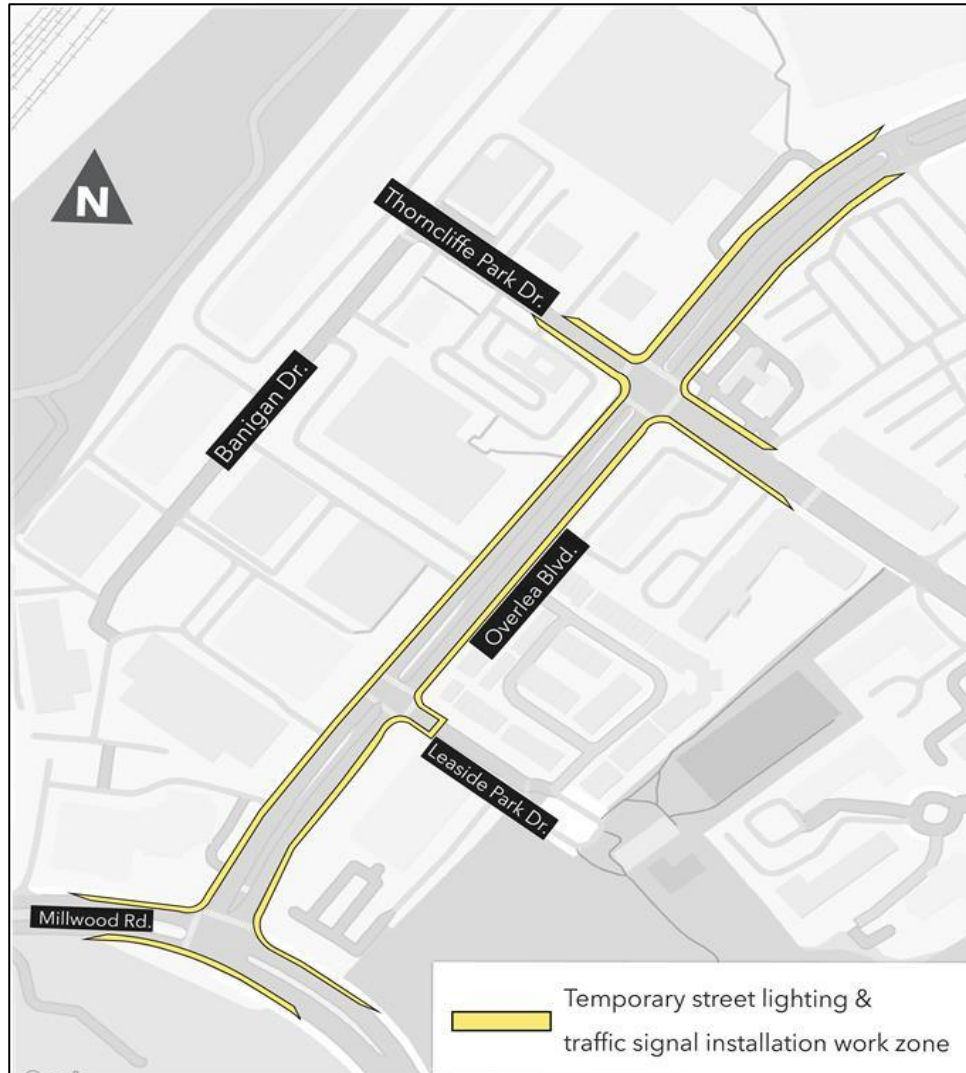
Lane and sidewalk closures for monitoring equipment installations along Overlea Boulevard



As early as January 14, 2026, instruments will be installed to monitor ground movement during the construction of the elevated guideway and future Thorncliffe Park Station.

- During this work, a portion of the curb lane near 28 Overlea Boulevard will be impacted for short periods of time. Work zones will be clearly marked and delineated.
- The monitoring devices will remain in place while construction remains active.
- All work on roadways will happen between non-peak hours of 9 a.m. to 4 p.m., and traffic lanes will be reinstated at the end of each workday.
- The installation of two monitoring instruments will be completed sequentially.
- The sidewalk on the north side of Overlea Boulevard from 28 Overlea Boulevard to 42 Overlea Boulevard (Costco) will be closed. Pedestrians will be redirected to the south sidewalk.
- The bus stop in front of 28 Overlea Boulevard will remain open and accessible via the signalized intersection at Thorncliffe Park Drive.
- Nearby residents and businesses can expect to hear noise from work equipment as required to assess underground utilities and ground conditions. Crews will take measures to minimize noise impacts wherever possible.

Street lighting and traffic signal installation along Overlea Boulevard



Upcoming work

- Starting in mid-January 2026 construction crews will:
 - Install and connect temporary lighting and signals
 - Remove light and signal poles
 - Remove/connect cables and install temporary lighting
- This work will start at Overlea Boulevard and Thorncliffe Park Drive (see map) between the hours of 9 a.m. to 5 p.m.
- This work is necessary to modify the area to safely construct the elevated guideway and station.
- The installation is expected to be completed in six (6) weeks.

Traffic and pedestrian impacts

- All traffic lane reductions for work areas are temporary and intermittent; The areas will be returned to public use upon completion of the work.
- Sidewalks and crosswalks within the work zones will be closed intermittently and will reopen once work in the area has been completed.
- Pedestrians are advised to follow directional signage and flag personnel.
- Bike lanes will be maintained and/or rerouted from active work zones where bike lane closures are required.
- TTC bus stops will be temporarily relocated where work zones impact current TTC bus stops. Signage will be posted to direct the public to relocated TTC bus stops.

Eight-Week Lookahead - December 24, 2025 to February 18, 2026

#	Activity	Location	Expected Start	Expected Duration	Impact	Hours of Work	Mitigations
1	Lane and sidewalk closures for monitoring equipment installations along Overlea Boulevard	Overlea Boulevard east of Thorncliffe Park Drive	January 14, 2026	Two days	Minimal noise and dust.	Weekdays, 9 a.m. – 4 p.m.	Vibration and noise monitoring.
2	Site laydown and preparation	Thorncliffe Park Station and Elevated Guideway	Began October 31, 2025	Until late January	Vibration, noise and dust.	Weekdays, 7 a.m. – 7 p.m.	Hoarding will be installed to safely separate construction activities. Vibration, noise and air quality monitoring.
3	Elevated guideway piling	Overlea Boulevard from west of Millwood Road to east of Thorncliffe Park Drive	December 1, 2025	Ten months	Vibration, noise and dust. Long-term sidewalk closures along the northern part of Overlea Boulevard. Pedestrians will be redirected to the south sidewalk.	Weekdays, 7 a.m. – 7 p.m.	Hoarding will be installed to safely separate construction activities. Vibration, noise and air quality monitoring.
4	Pre-condition subsurface utilities investigation	Overlea Boulevard between Millwood Road and Thorncliffe Park Drive	January 6, 2026	Four days	A temporary lane closure will be in place during work hours to facilitate the investigations.	Weekdays, 9 a.m. – 4 p.m.	Traffic control personnel will be on-site managing traffic flow, as required.
5	Street lighting and traffic signal installation	Overlea Boulevard and Thorncliffe Park Drive	Mid-January	Six weeks	Vibration, noise and dust . Temporary traffic lane and bike lane closures. Short term sidewalk closures and temporary pedestrian detours.	Weekdays, 8 a.m. – 5 p.m.	Advance signage will be installed to provide directions to the pedestrian detour. Traffic control personnel and paid duty officers will also be on-site to safely direct motorists and pedestrians. Vibration, noise and air quality monitoring.

January 2026 Construction Lookahead

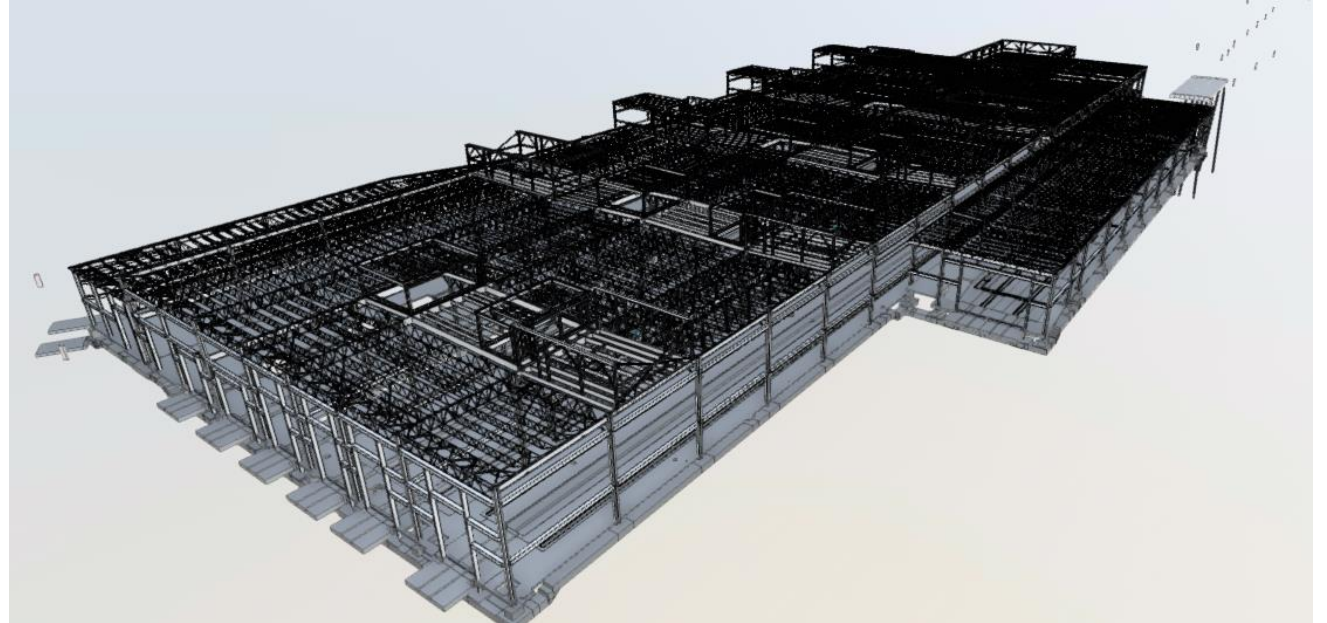
Date	Activity	Location	Details & Purpose
Winter	Site laydown and preparation	Overlea Boulevard	Site laydown preparation includes installing trailers, site offices and facilities, access roads and hoarding required to facilitate the construction of Thorncliffe Park Station and the elevated guideway. EGS laydown areas are: 10 Overlea Boulevard, 26 Overlea Boulevard, 28 Overlea Boulevard, and 6 Thorncliffe Park Drive.
	Elevated guideway construction	Overlea Boulevard	Construction of the elevated guideway, continuation of drilling of piles that will support the elevated guideway. Once the piles are drilled, rebar and concrete will be installed.
	Street lighting and traffic signal installation	Overlea Boulevard, Thorncliffe Park Drive and Millwood Road	Installation of temporary lighting and traffic signals and removal of light and traffic signal poles that conflict with the path of the future elevated guideway and station.

Operations, Maintenance and Storage Facility (OMSF)

OMSF site 2026: Progress from the ground up!

Maintenance Building:

- Completion of the building foundations
- Major works happening in 2026 are:
 - Start of building structure, structural steel installation begins
 - Start of building envelope (cladding, roofing etc.)
 - Start of slab on grade



Rendering: The Operation, Maintenance and Storage Facility maintenance building structural steel frame will take shape in 2026



A look at the snowy site of the OMSF today.

OMSF site 2026: Progress from the ground up!

Work moves forward on:

- Commencement of Maintenance of Way (MOW) building (train wash)
- Traction Power substation building (TPSS) construction moving forward



Artist's rendering – subject to change



Artist's rendering – subject to change

OMSF site 2026: We continue our progress around the site!

Work moves forward on:

- Final demolitions
- Utility works
- Completion of retaining wall
- Major grading work commences
- Start of the work on the test track
- Start of the Overhead Catenary System (OCS) foundations



**Progress
So
Far**

Ground improvement
Pat Moore Drive cul de sac
Demolition

100%	Maintenance building excavation	95%
100%	Retaining wall	20%
95%	Wet utilities	10%

Metrolinx will keep the community, residents and businesses informed by providing project updates, seeking input and feedback, while addressing questions and concerns effectively and quickly.

Next CLC meeting: Thursday, January 29, 2026

Connect with us:

- Ontario Line at OntarioLine@metrolinx.com

Email: OntarioLine@metrolinx.com

Telephone 24/7 @ 416-202-5100

Follow us on social media:

Twitter / Facebook / Instagram: @OntarioLine

Visit Us:

East York Town Centre
45 Overlea Blvd., Toronto, ON M4H 1C3
Unit 153 (across from the Rogers store)
Monday to Friday: 9 a.m. to 5 p.m.



*Scan here to sign up for
the new and improved
Ontario Line
e-newsletter*



*Scan here to explore
Ontario Line CLC
materials*