

Lakeshore East-West Corridor Expansion

GO Expansion in Birchmount Community

January 10, 2022

More info: metrolinx.com/lakeshoreeastrailcorridor/
Contact: TorontoEast@Metrolinx.com

Land Acknowledgement

Metrolinx acknowledges that it operates on the traditional territory of Indigenous Peoples including the Anishnabeg, the Haudenosaunee and the Wendat peoples.

In particular, we acknowledge lands covered by Treaty 13, 1805 with the Mississaugas of the Credit First Nation, the Gunshot Treaty, 1788 within the Williams Treaties territory, and the Fort Albany/Nanfan Treaty of 1701 with the Haudenosaunee.

Metrolinx is committed to building meaningful relationships with Indigenous Peoples, and to working towards meaningful reconciliation with the original caretakers of this land.

Safety Moment



Safety is a key commitment to the communities we operate and build in.

As excavation and piling work being at the site, we encourage residents to be aware of the increased vehicle activity around the sites.

Please look both ways when crossing and be extra diligent. If you see something, say something - contact our team at 416-202-3900.

Project Overview

Expanding the Lakeshore East Corridor for the Future

The Lakeshore East GO corridor is Metrolinx's second busiest rail line. We're transforming this corridor to bring more trips along the line for those traveling from and to Toronto. Frequent GO rail service will offer more service with faster trains and seamless connections to a regional rapid transit network.

What's Happening Now?

Across this corridor, crews are conducting preparatory work to widen the corridor and build infrastructure to allow for future fourth track and electrification work.



Benefits of GO Expansion



MORE TRIPS

6,000 weekly trips
2x as many rush hour options
3x as many off-peak options



FASTER TRAVEL

Electric trains **accelerate and decelerate faster**.
Additional express services will **save 20 min per day**



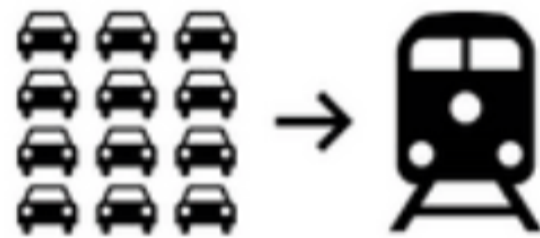
HIGH FREQUENCY

No need to check a schedule with **service every 15 minutes** or better, both ways, all day



MORE CAPACITY

Doubling regional commuter capacity **equivalent to nine highways the size of the 401**



LESS CONGESTION

More trains equal reduced congestion across the region, **taking close to 145,000 car trips per day off the road**



MORE JOBS

An estimated **8,300 annual jobs** created for the first 12 years of delivery will be created over the lifecycle of the program



SAVING TAXPAYER MONEY

All operating costs are covered with fare box revenue. **GO Rail revenues will exceed 110% of operating costs over the next 60 years**



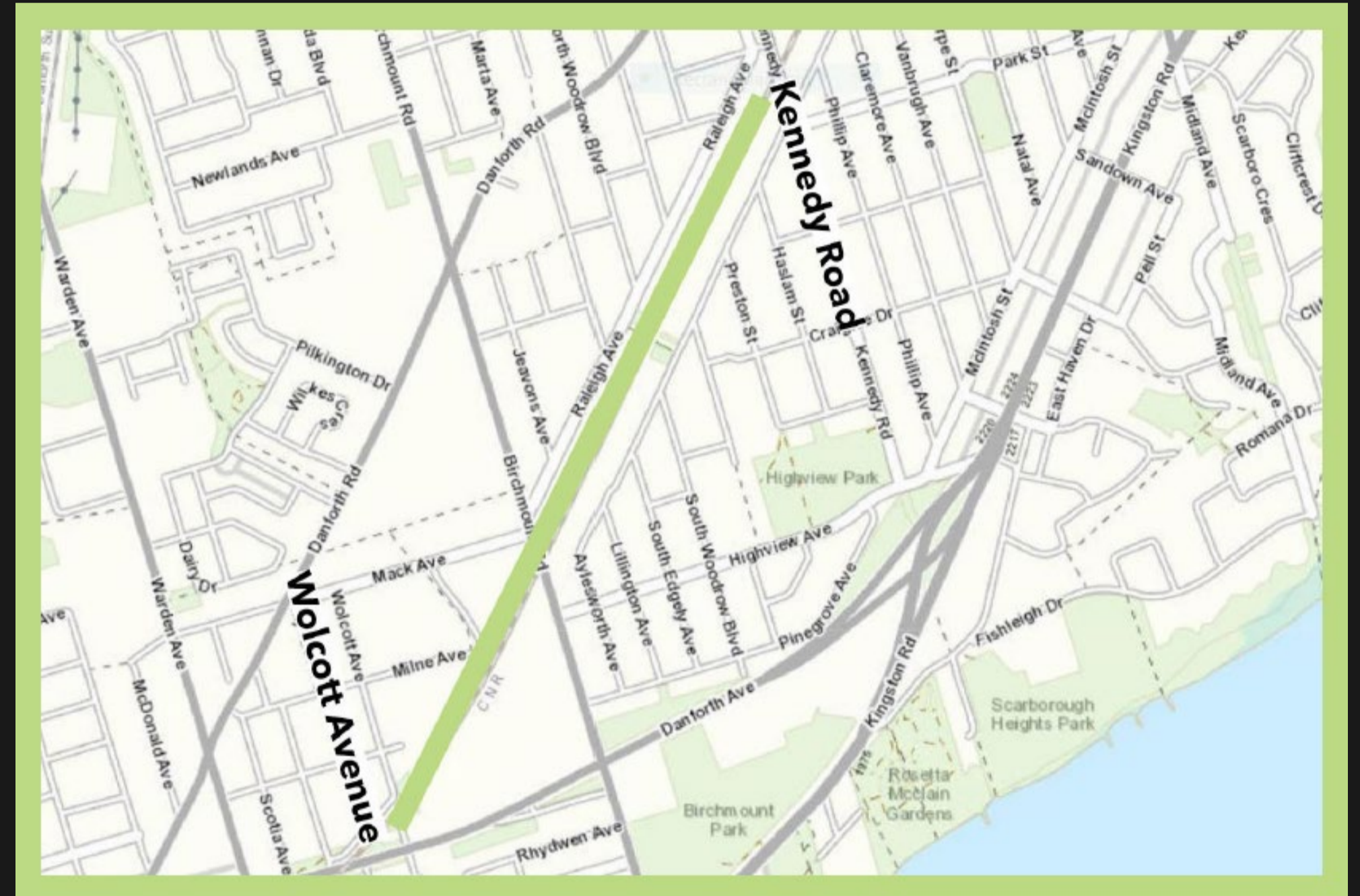
INCREASED RIDERSHIP

More options and faster trains will increase peak and off peak service. **By 2055, annual ridership will exceed 200 million**

AGENDA

1. Lakeshore East-Package A - Early Works
2. Birchmount Bridge Reconstruction
3. “On Corridor” Tree Removals
4. Utility Relocation

Lakeshore East-West Package A – Early Works January 2022 – Fall 2023



Sherry Malek Zadeh
Metrolinx, Project Manager

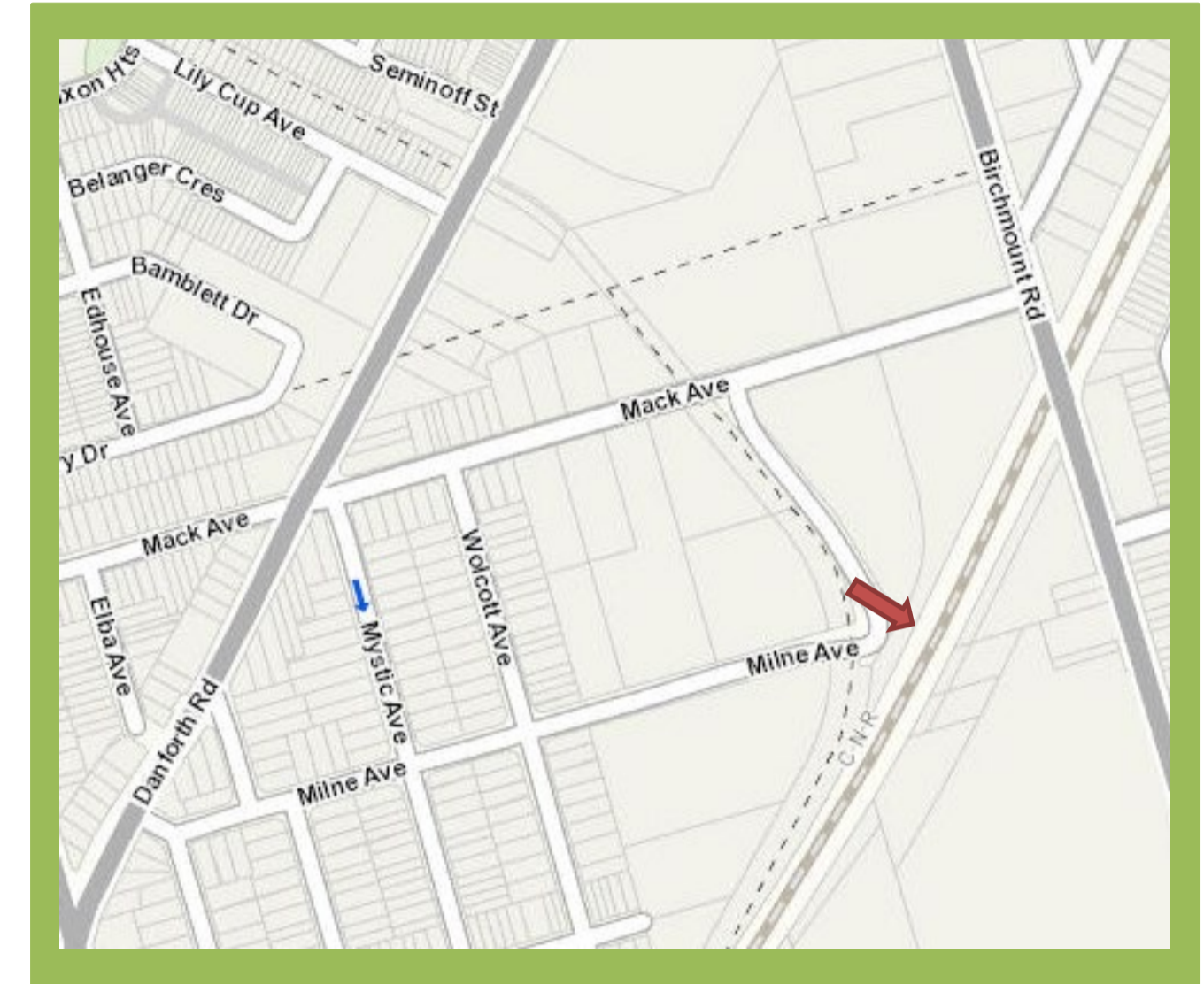


Project Overview

- Dufferin Construction will be expanding embankment where trains operate, to allow for the future installation of a 4th track
- Metrolinx is largely operating within their right-of-way. Homeowners whose lands are required have been contacted already
- Work requires preparing the ground, installing a retaining wall, electrical and drainage work, and restoration
- Due to proximity to the active rail corridor, a majority of work will be required to be conducted at night
- Some work will overlap

Construction Access and Staging

- The corridor will be accessed through two non-residential accesses - Milne Avenue and Kennedy Road
- Construction staging will be located at Milne Avenue
- An access road will be constructed in the corridor to minimize equipment transported on residential streets



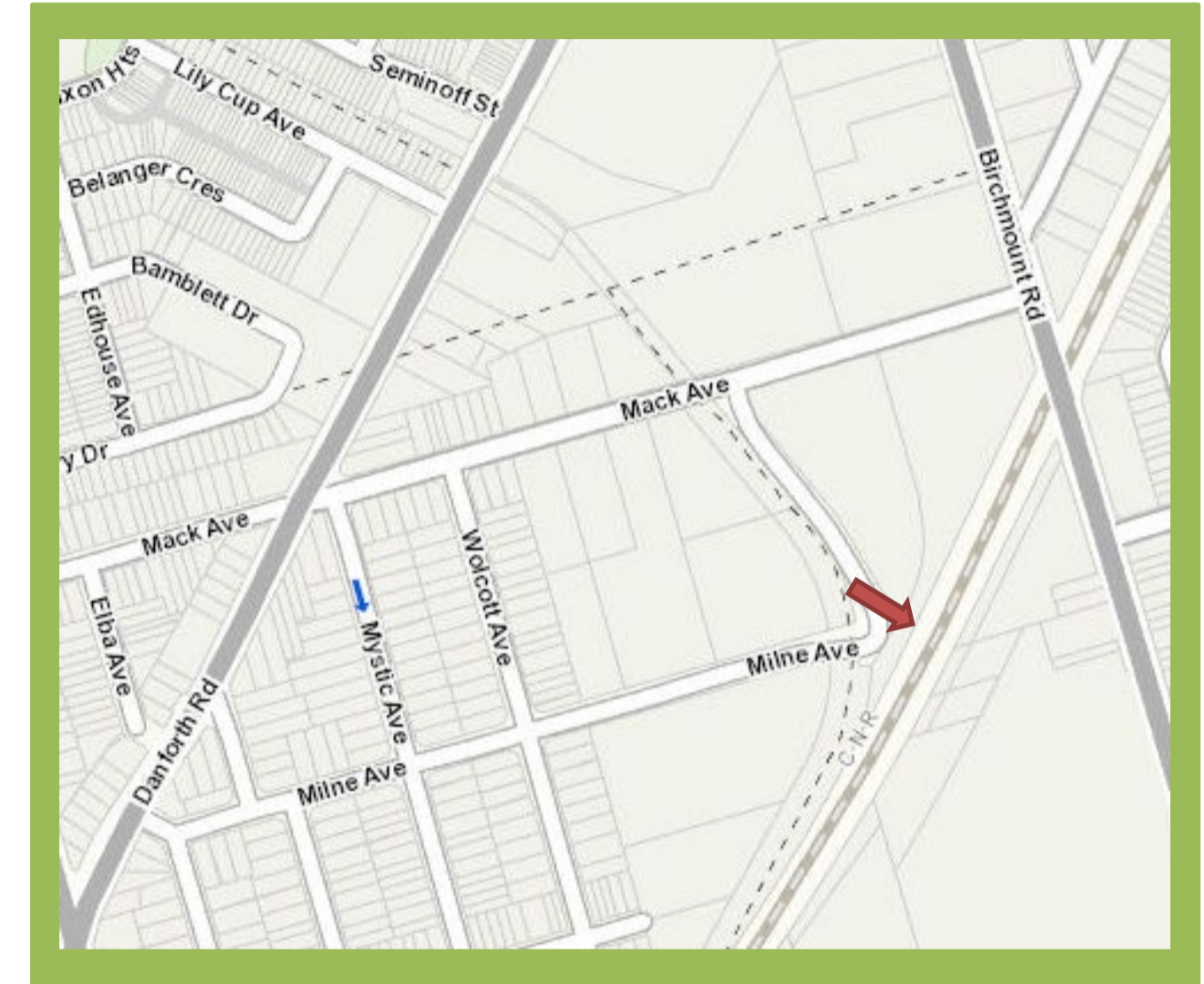
Vegetation Removal

- Trees and shrubs will be removed on the north-side of the corridor to allow for corridor widening and the construction of the retaining wall
- **Duration:** One Month
- **Hours of work:** 7:00 p.m. to 6:00 a.m.
- **Community Impacts:**
 - Increased construction vehicle traffic in corridor
 - Chainsaws, mulchers and bunchers
 - Lights



Access Road Construction

- A roadway will be constructed from the accesses across the project limits
- **Duration:** One Month
- **Hours of work:** 7:00 p.m. to 6:00 a.m.
- **Community Impacts:**
 - Increased construction vehicle traffic, including Excavators, in corridor
 - Lights



Excavation

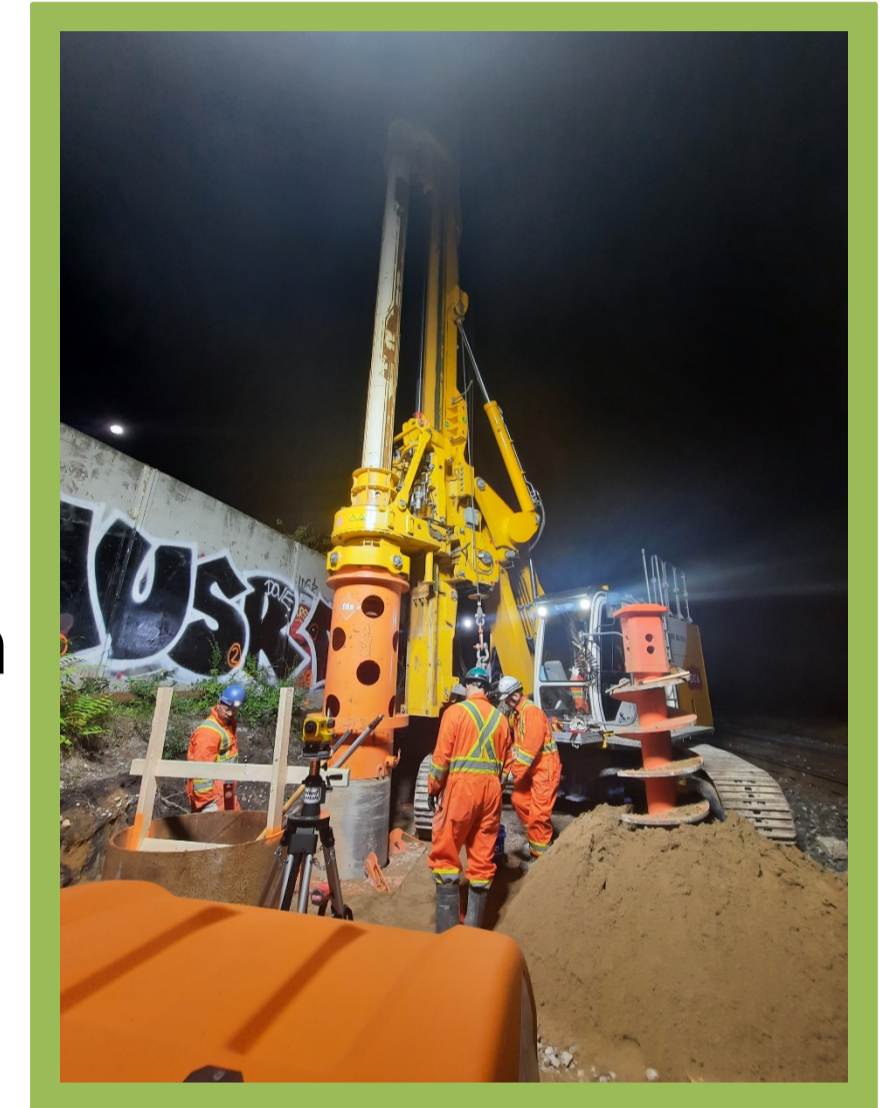
- Removal of excess material and earth to level the ground and allow for the installation of the retaining wall. Grading to prepare the future track bedding.
- Runs from Wolcott Avenue to Kennedy Road
- **Duration:** Eight Months
- **Hours of work:** 7:00 p.m. to 6:00 a.m.
- **Community Impacts:**
 - Excavator and dump trucks in corridor
 - Lights, noise and dust



Lakeshore East Rail Corridor

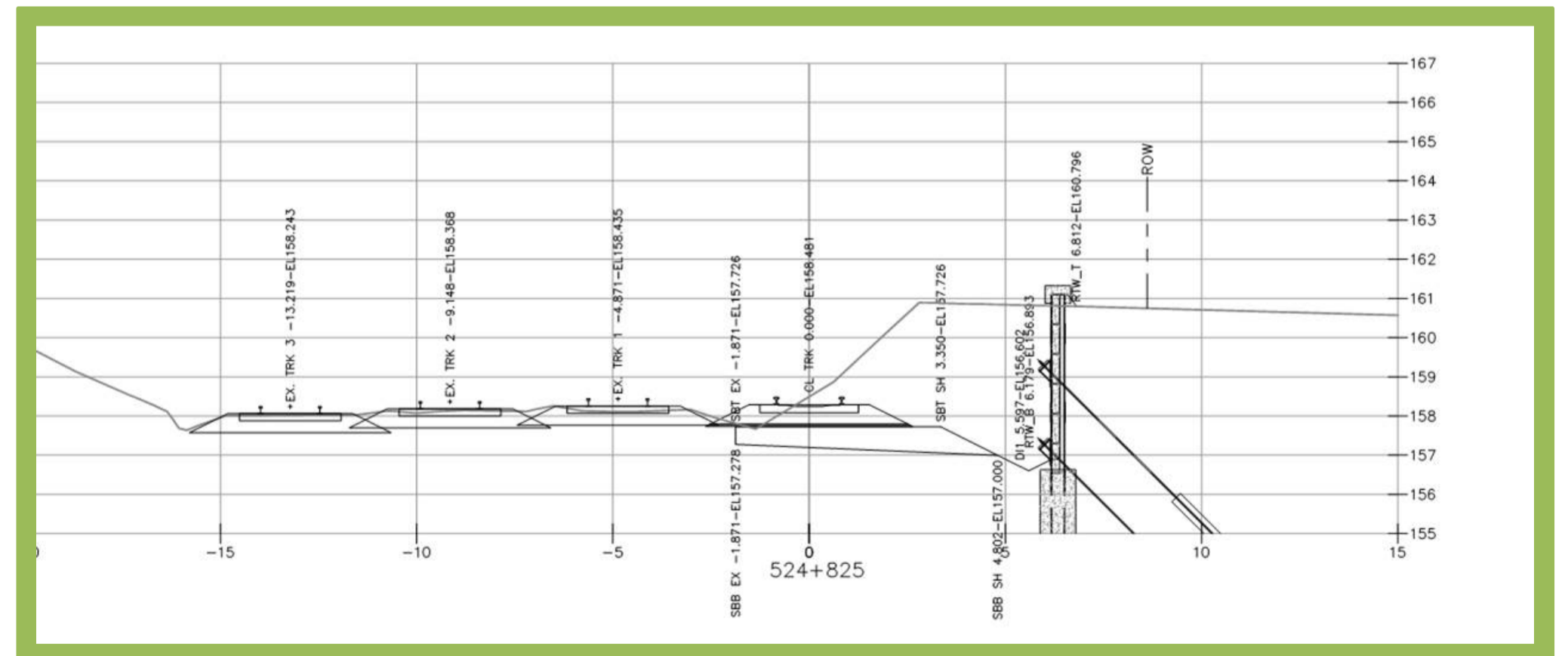
Piling

- Holes will be drilled deep into the ground and filled with concrete to support an H beam, as the base of and support for the retaining wall
- Will utilize drilling, which is quieter and creates less vibration than pounding
- Retaining walls will be installed from east of Milne Avenue to Kennedy Road
- **Duration:** Seven Months
- **Hours of work:** 7:00 p.m. to 6:00 a.m.
- **Community Impacts:**
 - Auguring (drilling) and heavy vehicle traffic in corridor
 - Lights, noise and dust



Lagging Wall

- Installation of lagging wall sections between the H beams installed through piling
- **Duration:** Four Months
- **Hours of work:** 7:00 p.m. to 6:00 a.m.
- **Community Impacts:**
 - Heavy vehicle traffic in corridor
 - Lights, noise and dust



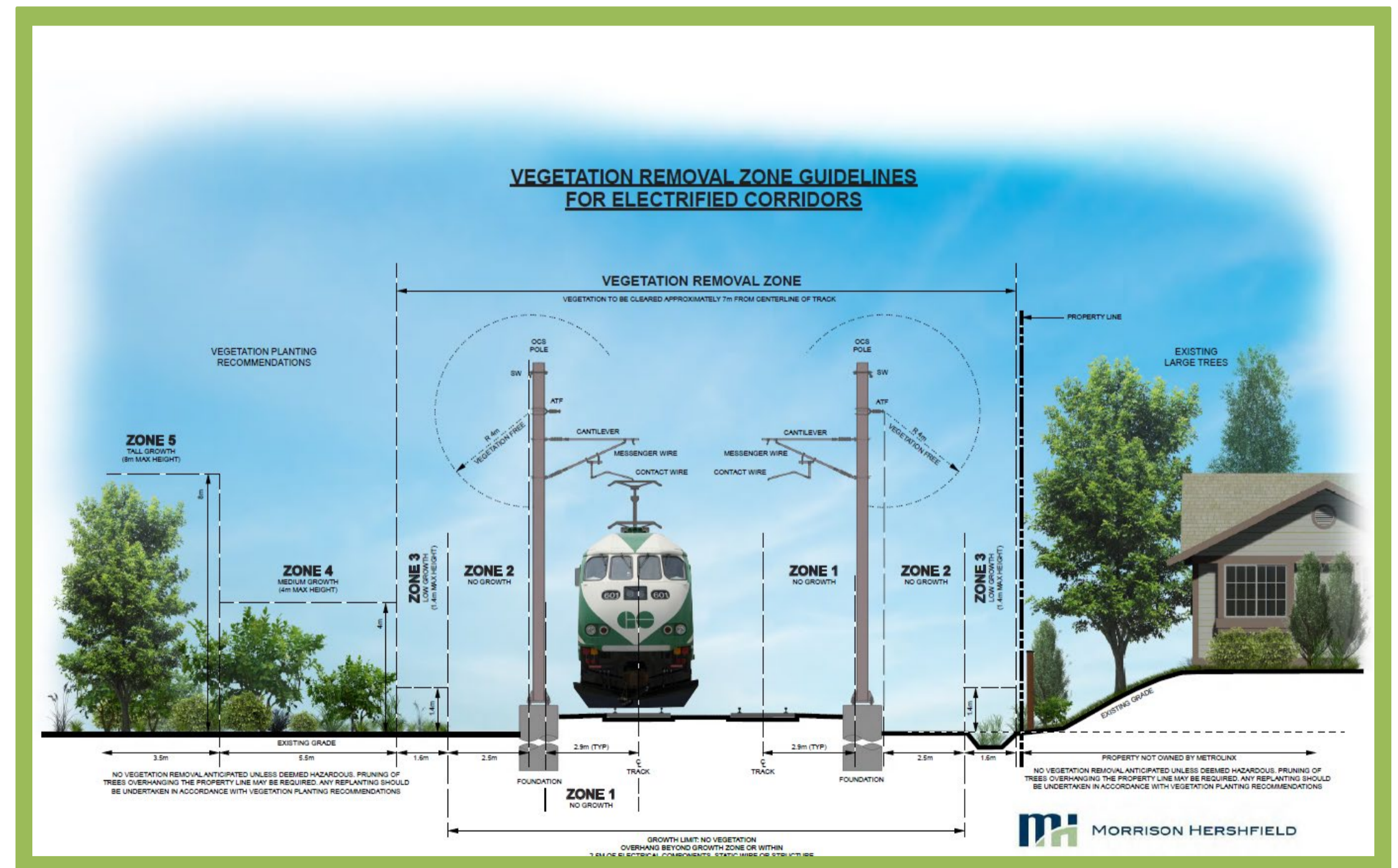
Grading and Drainage

- Placing granular base for the future track and install subsurface drainage.
- **Duration:** Three Months
- **Hours of work:** 7:00 p.m. to 6:00 a.m.
- **Community Impacts:**
 - Digger, dump truck, and other heavy vehicle traffic
 - Lights, noise and dust



Restoration

- Metrolinx is working with TRCA and the City for restoration/compensation opportunities. There will be no tree replanting within Metrolinx ROW due to the future electrification requirements.
- **Duration:** One Month
- **Hours of work:** 7:00 p.m. to 6:00 a.m.
- **Community Impacts:**
 - Heavy vehicle traffic in corridor
 - Lights, noise and dust



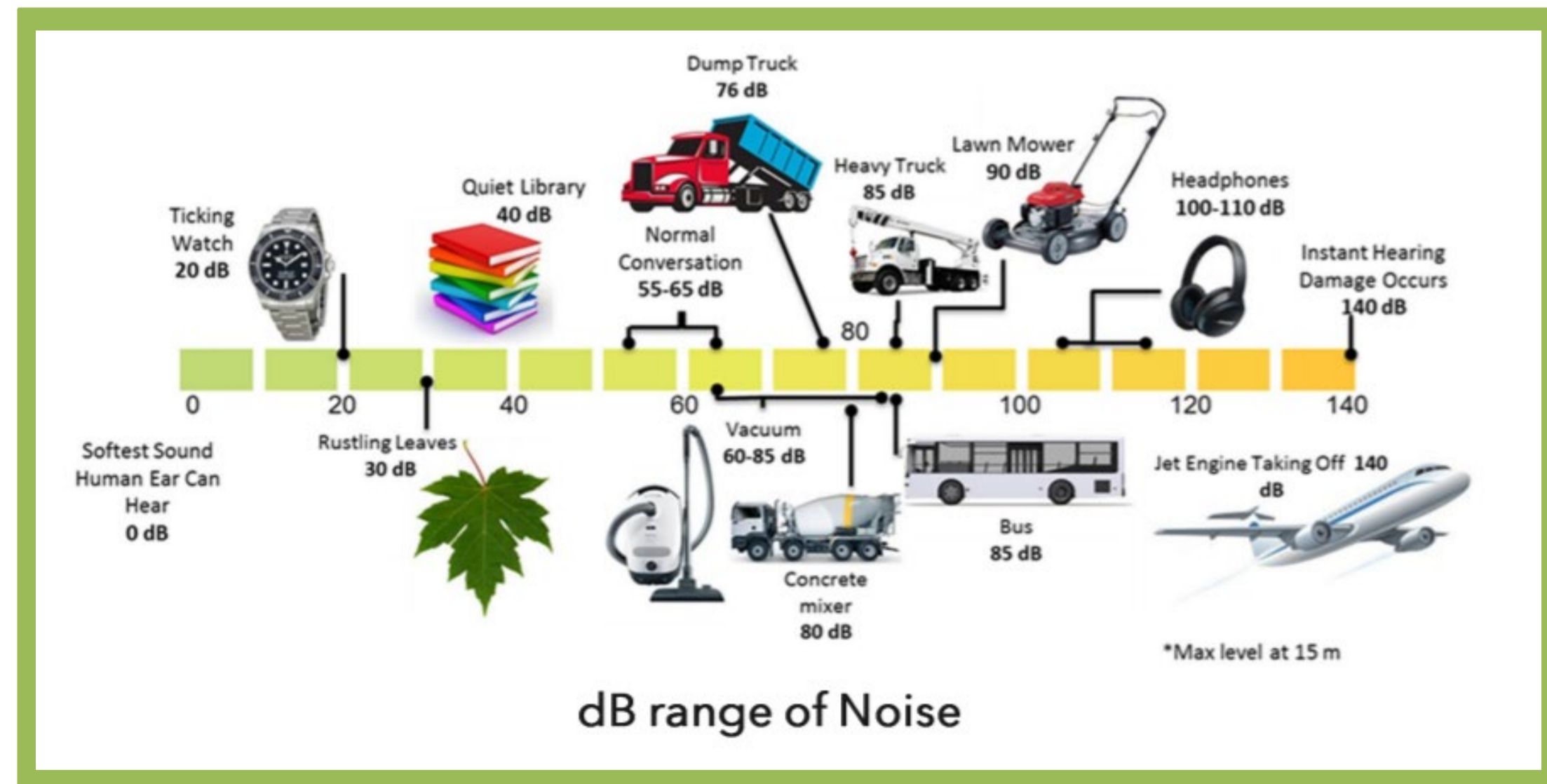
Why Night Work?

- The work is located very close to the tracks. Given this, day time work would result in very frequent work stoppages, meaning a significantly longer work schedule and more noise for residents.
- Overnight work allows us to complete the work safely and efficiently because trains are not running or running at reduced frequency at night.



Noise and Vibration Mitigation

- Anti-Idling policy in place: No idling of non-essential equipment
- Dufferin will attempt to reduce the durations of trucks reversing into the jobsite
 - minimizing exposure to backup alarms
- Dufferin will use broadband (white noise) backup alarms on trucks and equipment that will be on site for longer than two days at a time
- Overnight work allows us to complete the work safely and efficiently because trains are not running or running at reduced frequency at night.
- Whenever possible Dufferin will route trucks on main roads and avoid using small residential streets for hauling operations
- Sequencing louder work earlier in the evening, when possible



Noise and Vibration Monitoring

- Noise and vibration monitors are located in each work zone
 - Continuous readings (24/7)
 - Solar-powered
 - All data stored on cloud service
 - Dufferin and Metrolinx have access to data
 - Weekly monitoring report by specialist - submitted weekly to Metrolinx

Exceedances

- Metrolinx notified within 24 hour by email from Dufferin representative
- Metrolinx & Dufferin investigate cause and determine action required



Birchmount Bridge Reconstruction

August 2022 – Summer 2024



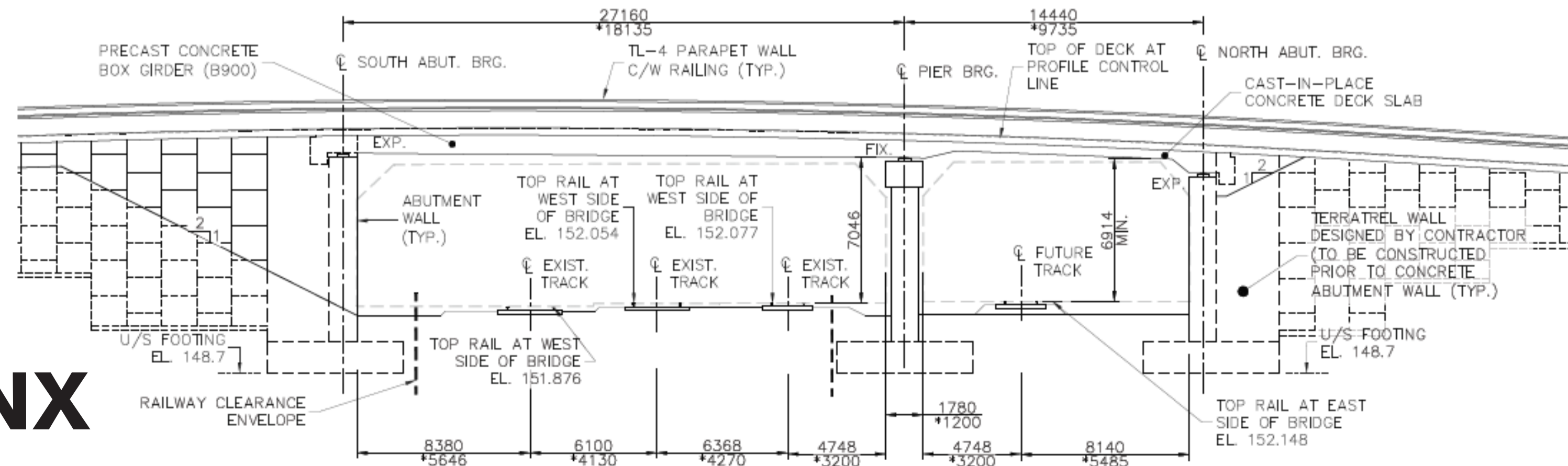
Anthony Olagunju
Metrolinx, Project Manager

Quick Facts

- The Birchmount bridge was built in 1958, making it 63 years old
- The bridge supports four traffic lanes, two southbound and two northbound
- The bridge was independently assessed by the City of Toronto and Metrolinx based on the condition of the structures remaining useful life
 - The result of these assessments concluded that the condition warranted replacement

This project will

- Increase track capacity by making sufficient space for a fourth track
- Improve operational flexibility for Metrolinx trains
- Reduce the long-term maintenance costs of the bridge structure



SCOPE OF WORK



Demolition and Replacement of the Existing Birchmount Road Bridge



Retaining Walls (North Side)



Site Grading for T4 (Approximately 150m)



Utilities Relocations



Civil Works and Installation of New Sewer Pipe



Additional Environmental Assessment Studies



Property Acquisition and Temporary Easements as required

Work Impacts

- Lane reduction during the course of the project.
- Construction noises and activity mainly during daylight hours.
- Occasional night and weekend works and full closures.

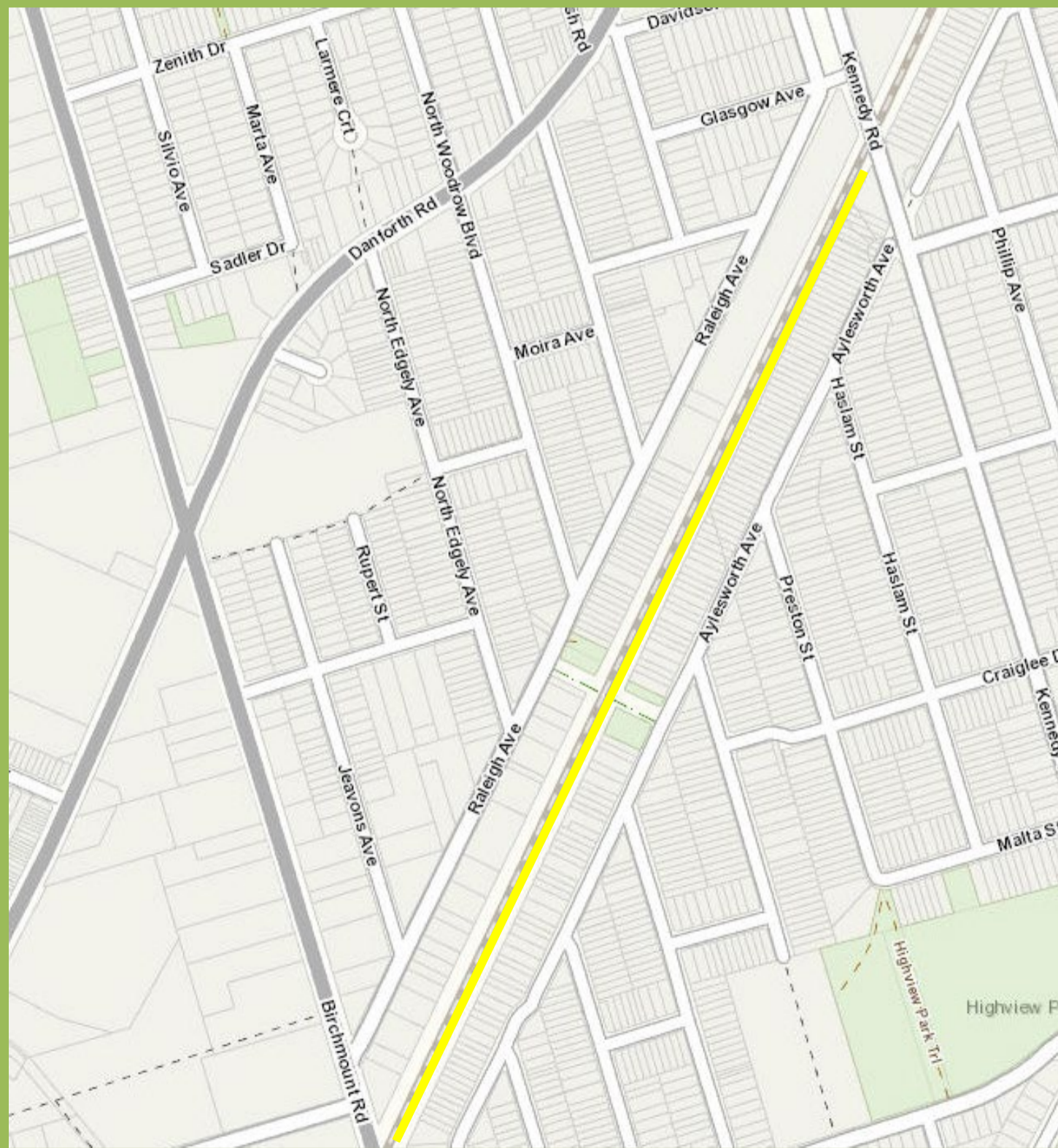
Next Steps

100% Project Design	Completed
Award of Contract	April 2022
Construction Start	August 2022



On Corridor Vegetation Removal

January 2022 – April 2022



Carolien Dannrath
Metrolinx, Senior Manager

What's Happening?

Vegetation is being removed on the south-side of the rail corridor between Wolcott Avenue to Kennedy Road.

Why is it happening?

This is part of Metrolinx's On Corridor work, to prepare for the installation of future electrification infrastructure.

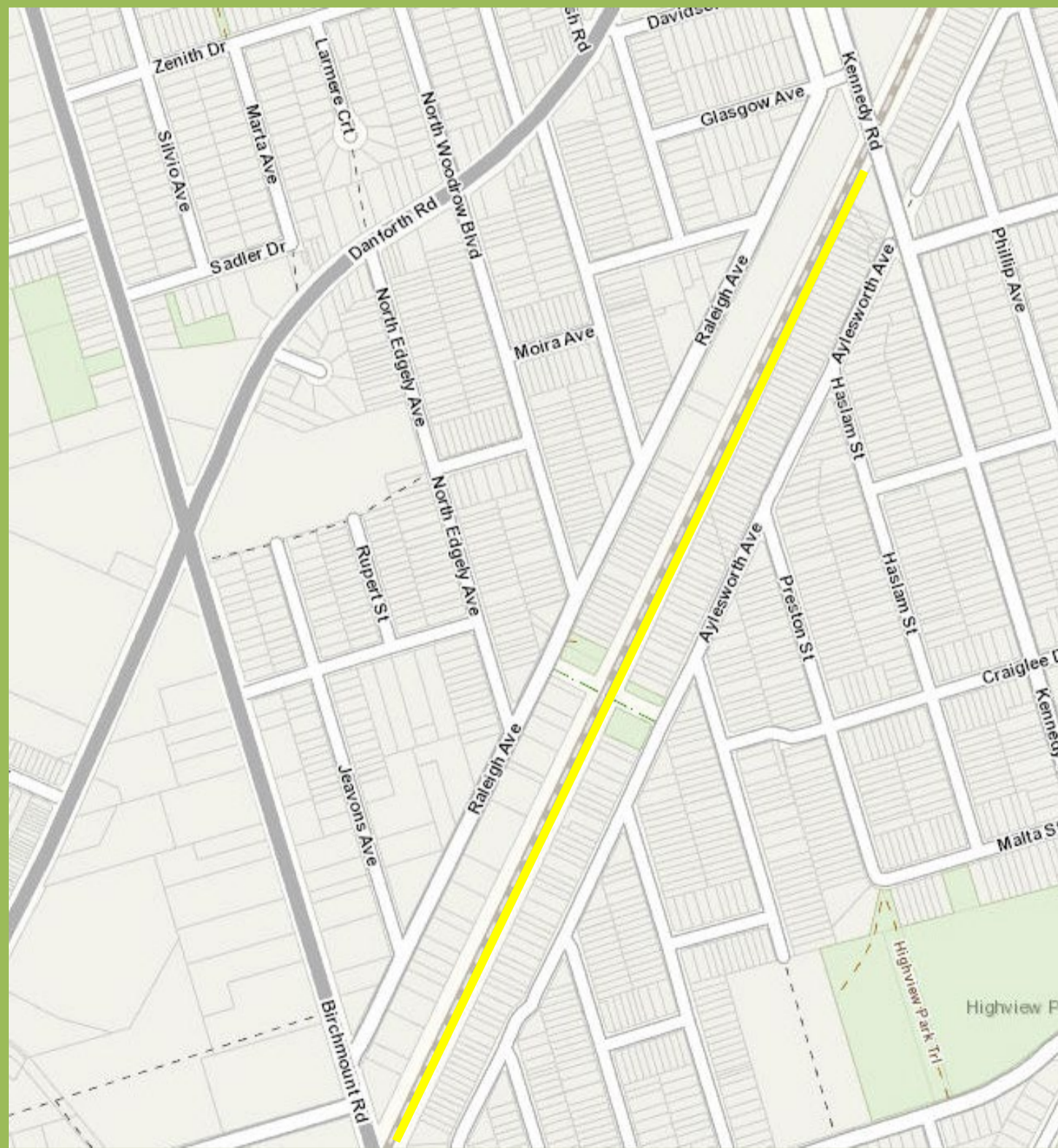
When is it happening?

- Work will be conducted during the day, from 7:00 a.m. to 7:00 p.m., on weekdays and weekends
- Work is scheduled for January until the start of April



Utility Relocation

September 2021 – February 2022



Sung Cho
Metrolinx, Project Manager

What's Happening?

The rail corridor also serves as a utility corridor, bringing vital services to our communities. The utilities are being relocated from the north to south-side of the corridor, further from the active rail corridor.

Why is it happening?

To accommodate future corridor infrastructure, these utilities are being relocated further away from the tracks.

When is it happening?

- Works has been happening since Fall 2021 and is expected to be completed by February, 2022
- Given the proximity to the track, work has to be conducted at night, between 7:00 p.m. and 6:00 a.m.



Questions & Discussion

Stay in Touch



416-202-3900



[Metrolinx.com/lakeshoreeastrailcorridor](https://www.metrolinx.com/lakeshoreeastrailcorridor)



TorontoEast@metrolinx.com



Visit our Agincourt Community Office:
Address: 4142 Sheppard Avenue East
Currently closed due to COVID-19 Precautions



[@GOExpansion](https://twitter.com/GOExpansion)

