

Ontario Line

North Segment Virtual Open House

September 16, 2021

Land acknowledgement

Let us take a moment to acknowledge that we are on the traditional territory of Indigenous Peoples including the Anishnabeg, the Haudenosaunee and the Wendat peoples.

We are all Treaty people. Many of us have come here as settlers and immigrants... in this generation or generations past.

Metrolinx declares its commitment to building meaningful relationships with Indigenous Peoples.

We acknowledge the historic and continued impacts of colonialization and the need to work towards meaningful reconciliation with the original caretakers of this land.

We acknowledge that Metrolinx operates on lands covered by 20 Treaties, and that we have a responsibility to recognize and value the rights of Indigenous Nations and Peoples and conduct business in a manner that is built on the foundation of trust, respect and collaboration.

Safety moment

It's almost fall. That means darker mornings and evenings.

- **Drivers,** make sure to slow down and pay closer attention to your neighbours walking or cycling to work or school.
- **Pedestrians and cyclists,** be aware. Cyclists, remember to use your lights.



Presenters



Richard
Tucker

Ontario Line
Project Director



Malcolm
MacKay

Ontario Line
Project Sponsor



Natasha
Jailal

Senior Manager,
Property Team



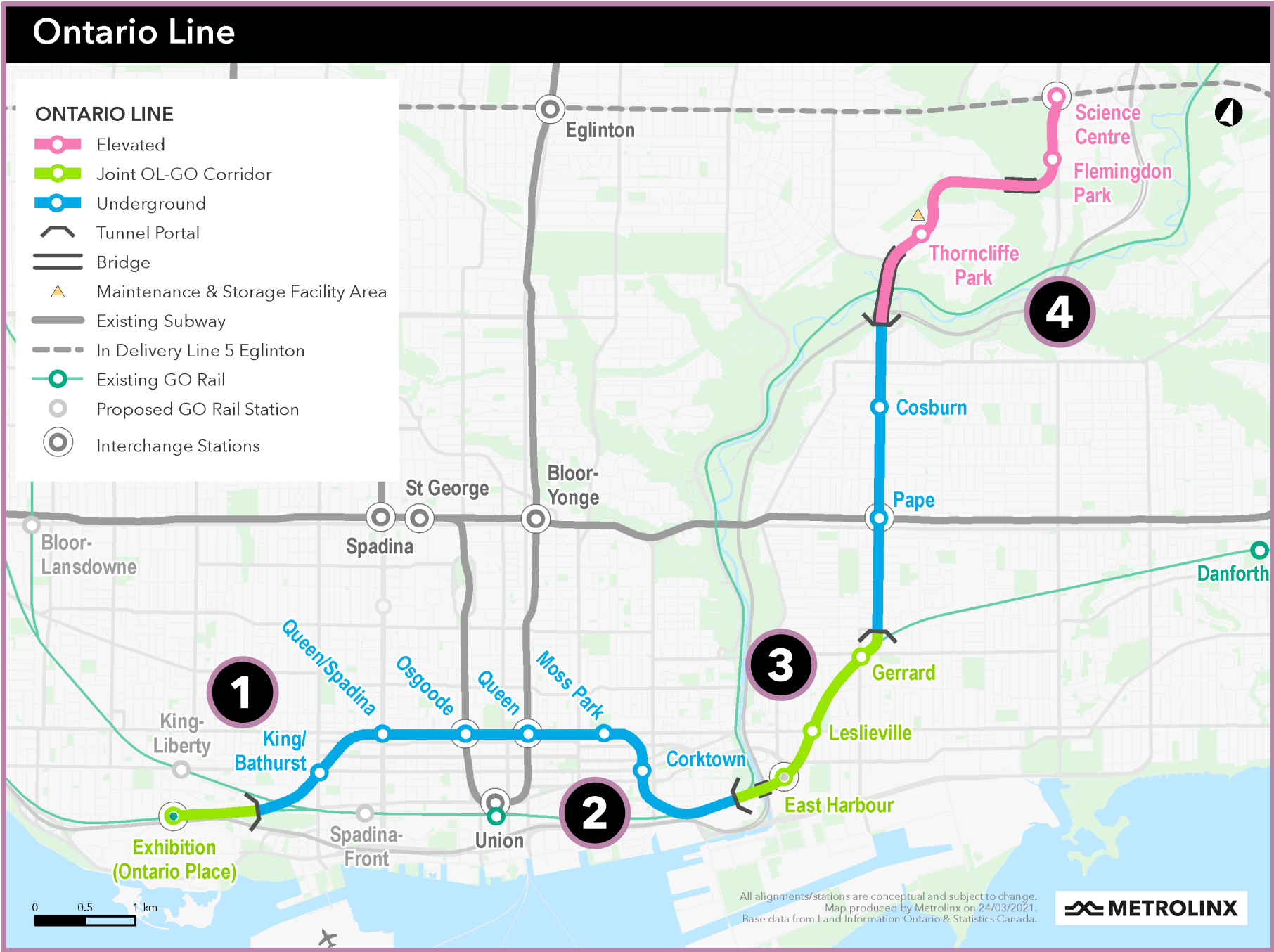
John
Potter

Manager,
Design Standards

Agenda

1. Ontario Line and north segment recap
2. Update for Thorncliffe Park and Flemingdon Park
3. Design objectives for the maintenance and storage facility and the walls and landscaping surrounding it
4. Design objectives for the elevated guideways and the public areas below them
5. Timelines and upcoming engagement opportunities
6. Q&A

The Ontario Line



- 1 West**
(Exhibition to Queen/Spadina)
- 2 Downtown**
(Osgoode to Don Yard)
- 3 East**
(East Harbour to Pape South)
- 4 North**
(Pape to Science Centre)

Faster commutes

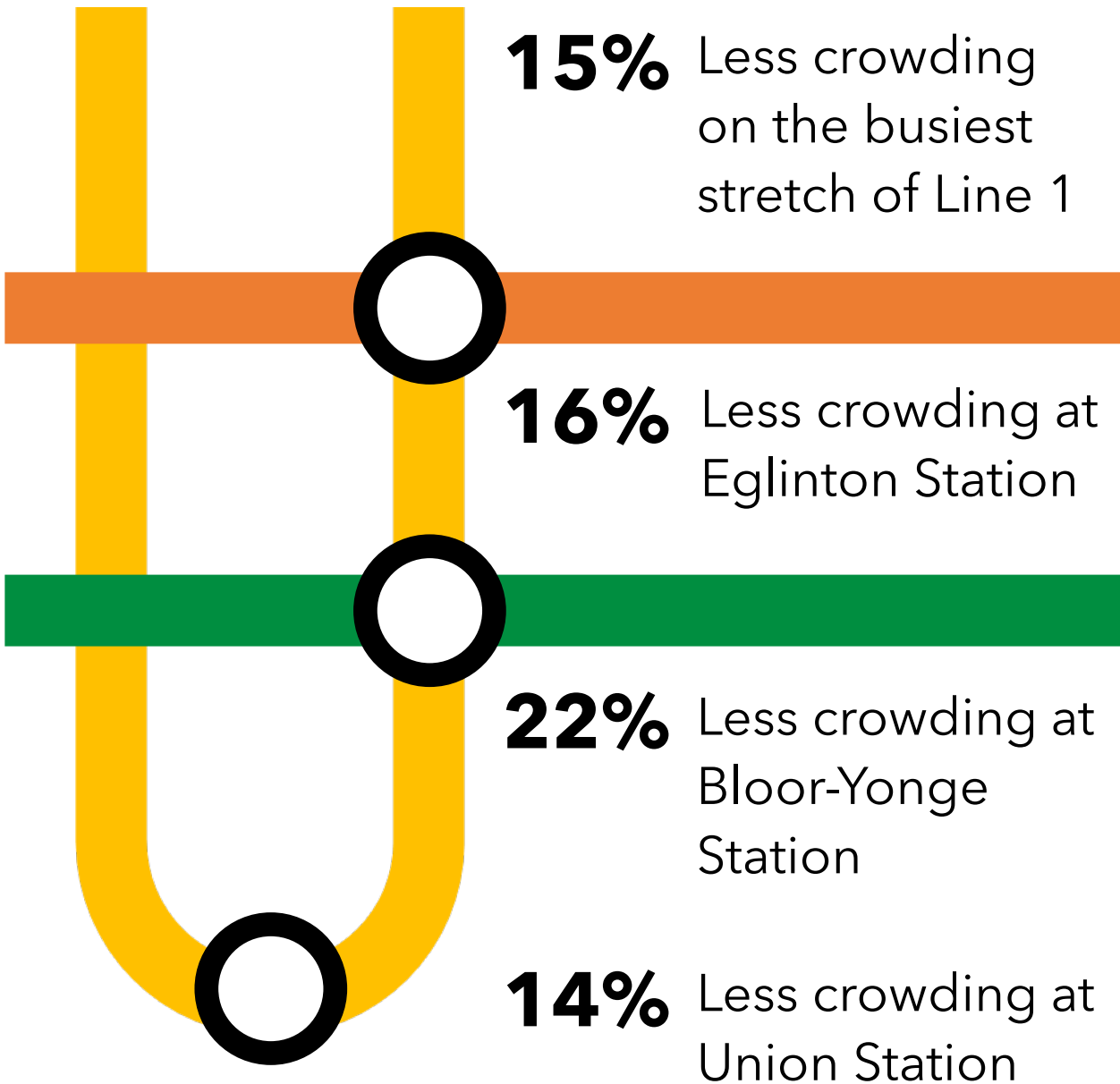
Travel times between Exhibition Place and the Ontario Science Centre



Travel times between Thorncliffe Park and downtown (King & Bay)

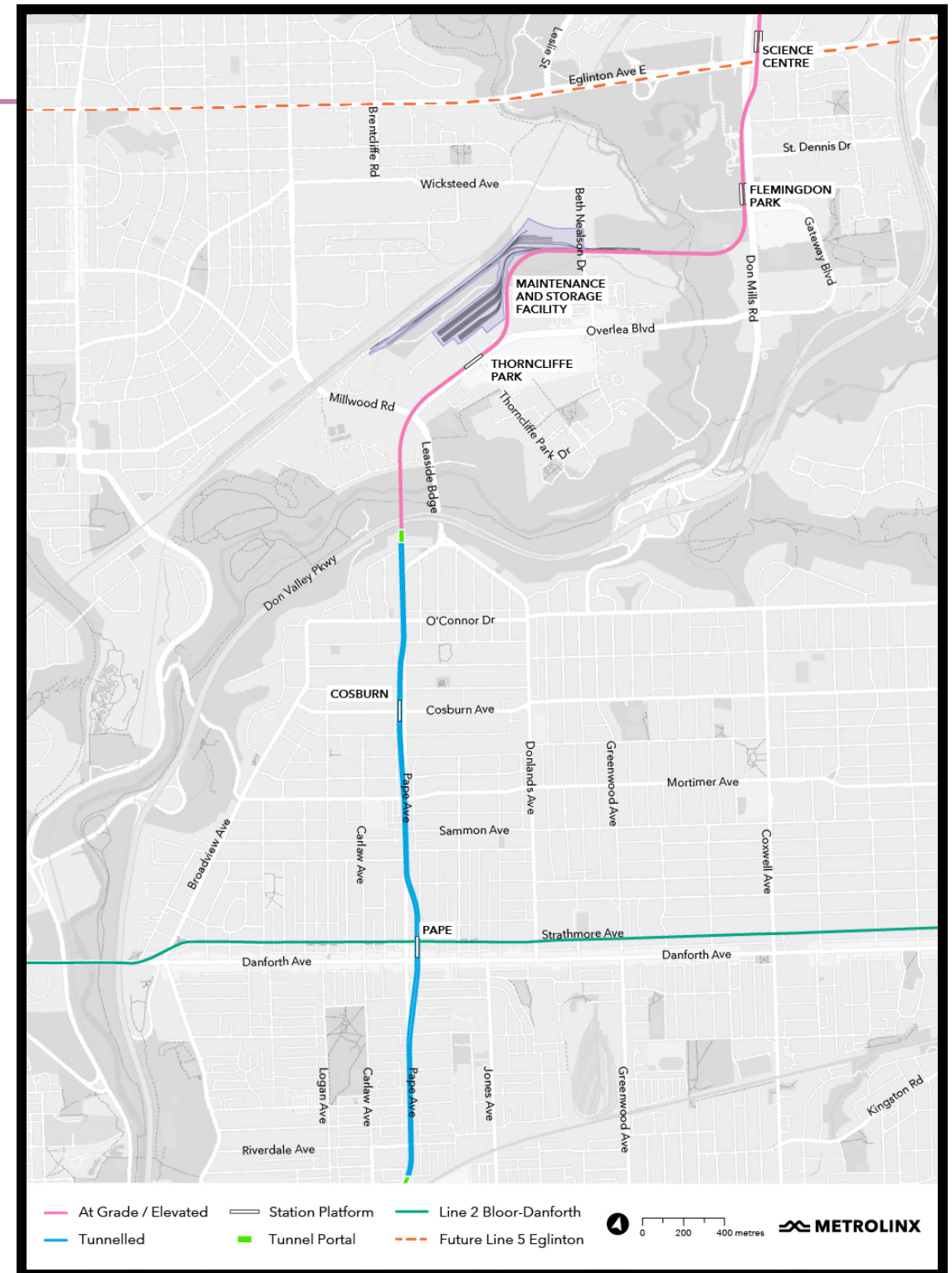


Less crowding



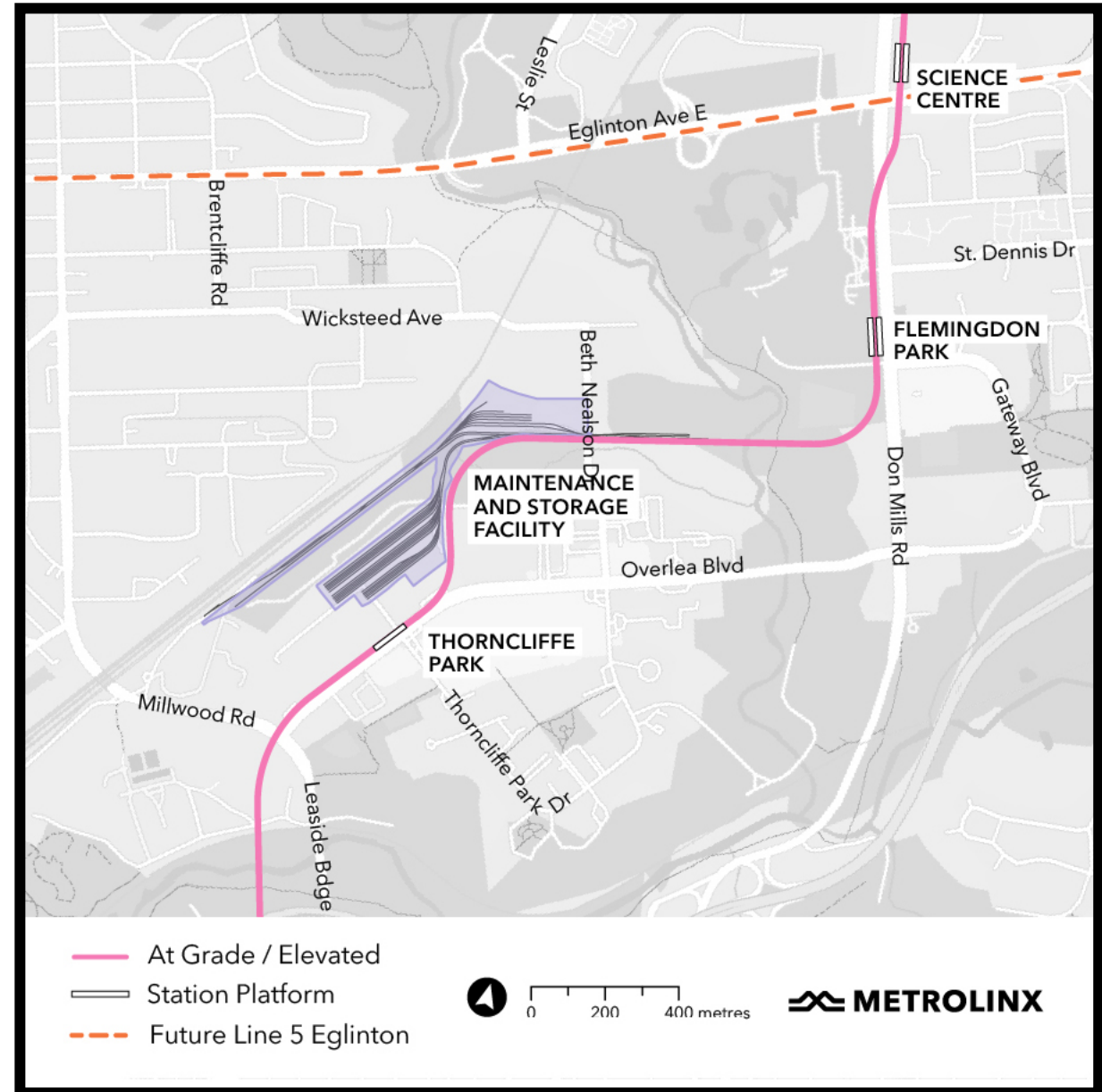
North segment recap

- The north segment runs from Pape & Riverdale to Don Mills & Eglinton, with:
 - **Two underground stations** at Pape (connecting to Line 2) and Cosburn
 - **A tunnel portal** connecting the tunnel to a bridge crossing the Don Valley
 - **Three elevated stations** at Thorncliffe Park, Flemingdon Park, and Science Centre (connecting to Eglinton LRT)
 - **A maintenance and storage facility** near Thorncliffe Park station



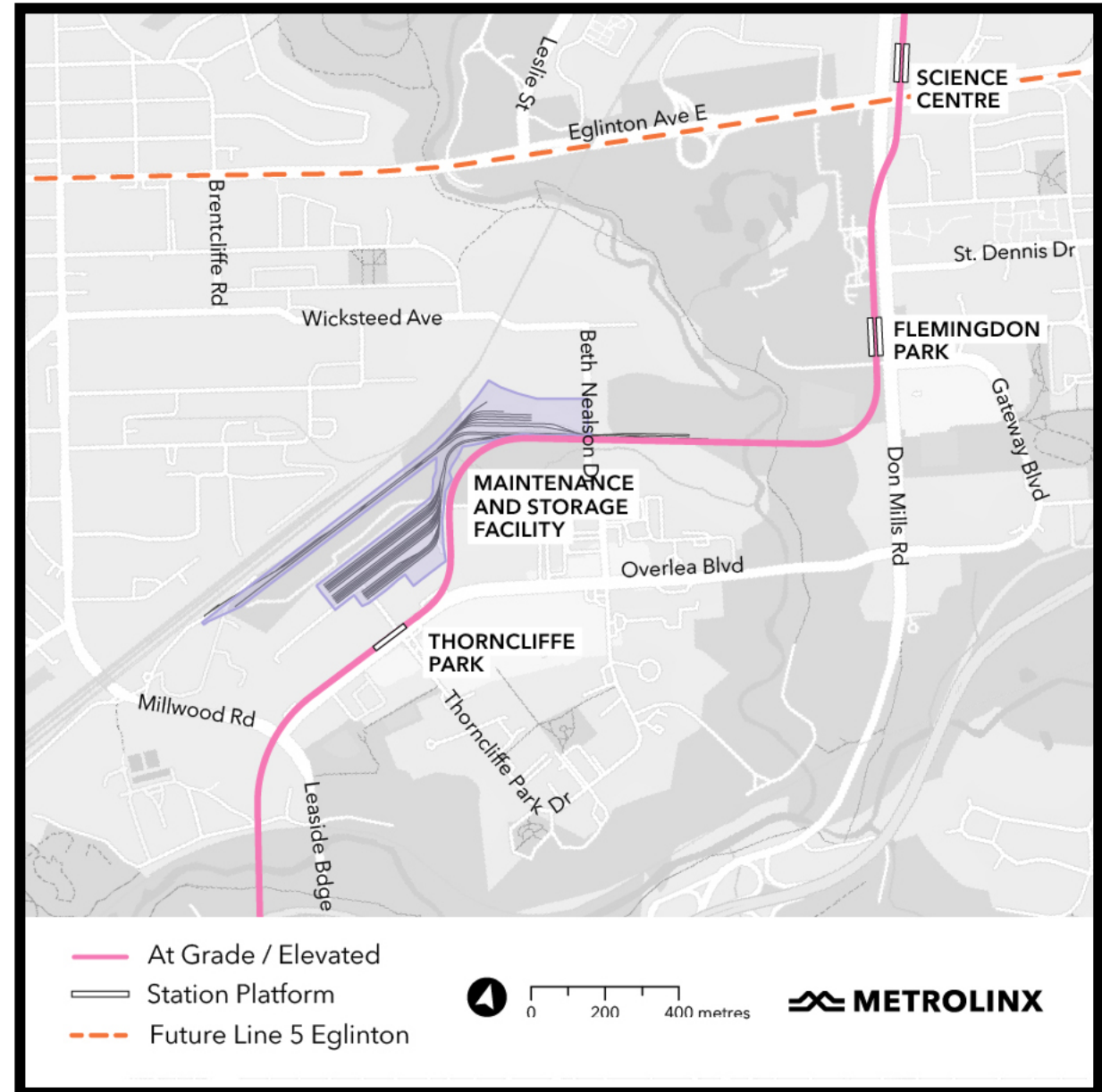
Updates for Thorncliffe Park and Flemington Park

- In October, Metrolinx will be creating two community working groups to:
 1. Explore design principles and features for the walls, fences, and landscaping surrounding the maintenance and storage facility
 2. Explore design principles and features for the public areas below the elevated guideway
- Interested in participating? Email ontarioline@metrolinx.com or call 416-202-5100.



Updates for Thorncliffe Park and Flemingdon Park

- Tomorrow, Metrolinx will also launch a public survey asking for community opinions and key objectives for Ontario Line design options in Thorncliffe Park and Flemingdon Park
- The survey will be live on [MetrolinxEngage.com](https://www.metrolinx.com/eng/transportation/projects/ontario-line/consultation) until October 16, 2021
- The link will also be sent to event registrants and shared through our email newsletter



Ontario Line Design Objectives

Maintenance and storage facility and the public-facing perimeter walls and landscaping surrounding it

Bus tours of existing maintenance & storage facilities

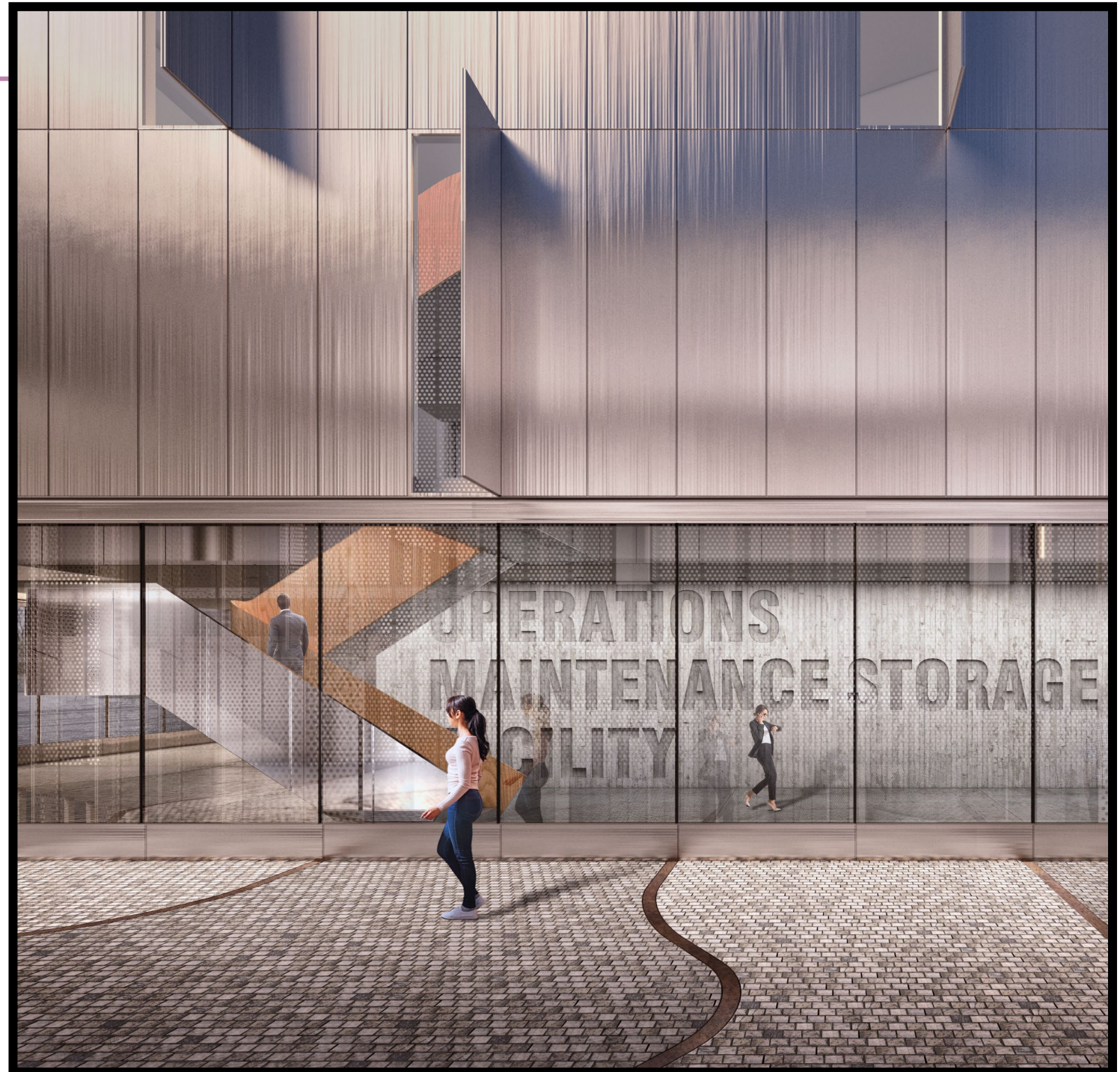
- In August, Metrolinx hosted two bus tours of existing maintenance and storage facilities in Toronto for Thorncliffe Park residents.
- Stops included:
 - Greenwood Yard, built in the 1960s in a neighbourhood that people have called home since the 1920s
 - Leslie Barns, opened in 2015 and designed to complement the Martin Goodman Trail
 - Eglinton Crosstown MSF, built to meet Metrolinx sustainability and climate resiliency guidelines



Photos from inside the bus during the tour, and at the Leslie Barns maintenance and storage facility

Design objectives for maintenance & storage facility

- Fits into the community
- Shields residents from the sights and sounds of the work going on inside



Draft concept of possible design for Ontario Line maintenance and storage facility building

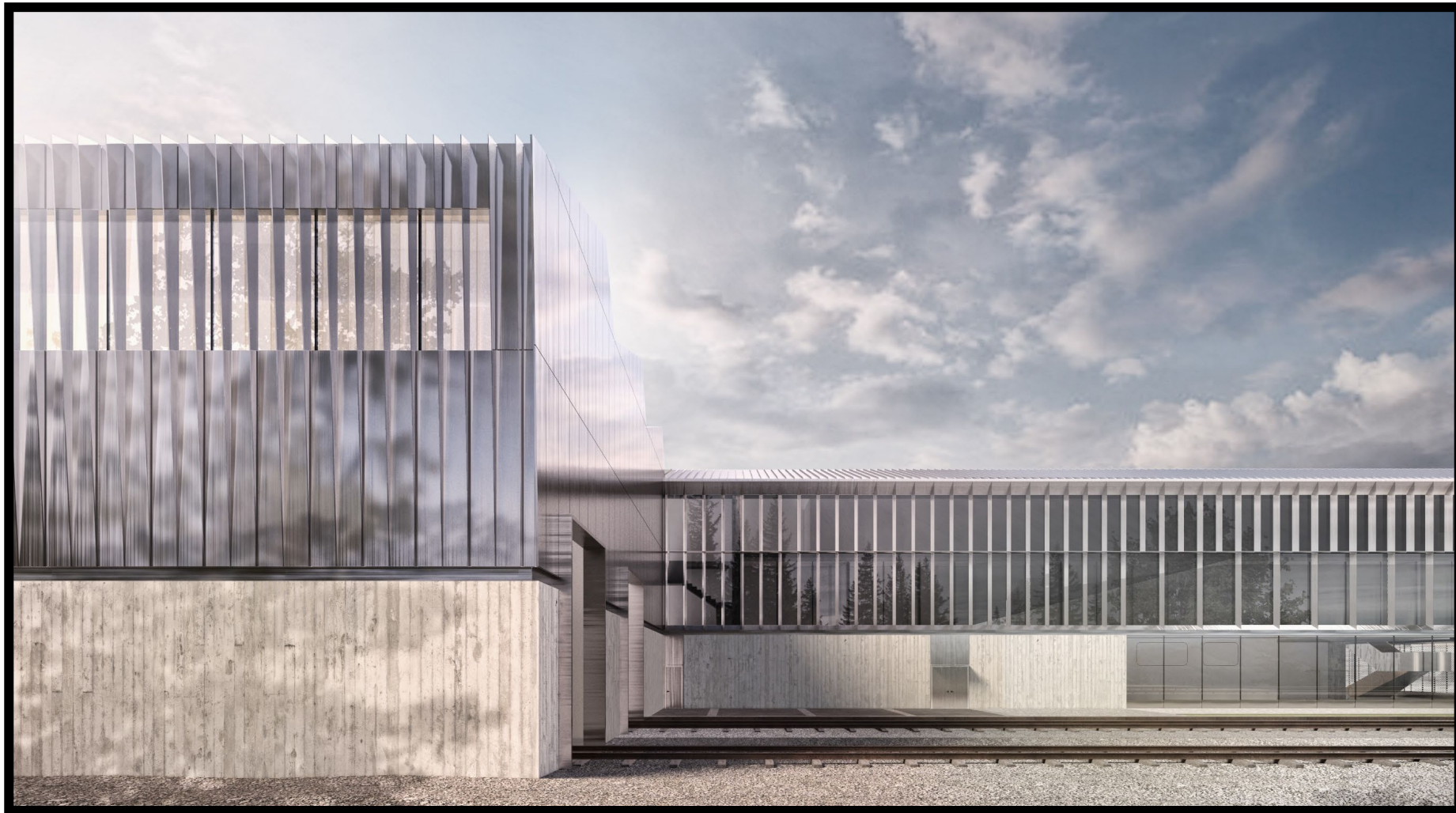
Maintenance & storage facility building features

Modern perimeter walls that blend into the background



Maintenance & storage facility building features

Reflective materials meant to mimic the colour and movement of the sky



Maintenance & storage facility building features

Green roof to meet sustainability and climate resiliency goals and increase greenery seen by taller buildings in the community



Design objectives for public-facing areas surrounding the MSF

- The perimeter walls, fences, and landscaping around the maintenance and storage facility will be designed to integrate into the surrounding neighbourhood.
- We will be looking for community opinions and key objectives for the design of these spaces and what features you are interested in seeing explored.



Rendering showing perimeter wall surrounding Eglinton Crosstown maintenance and storage facility

Objectives for MSF perimeter walls, fencing and landscaping

Ensure public-facing areas are attractive and appealing



Objectives for MSF perimeter walls, fencing and landscaping

Reduce sound and disturbances



Objectives for MSF perimeter walls, fencing and landscaping

Create inviting, safe spaces



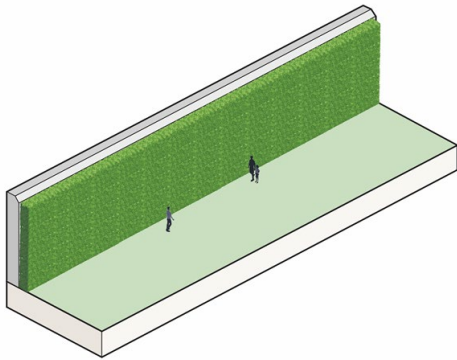
Objectives for MSF perimeter walls, fencing and landscaping

Reflect unique neighbourhood character

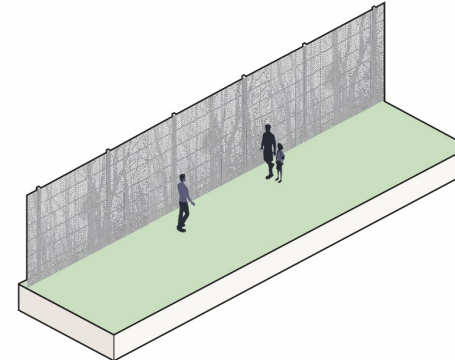


Potential design options for public-facing MSF perimeter walls

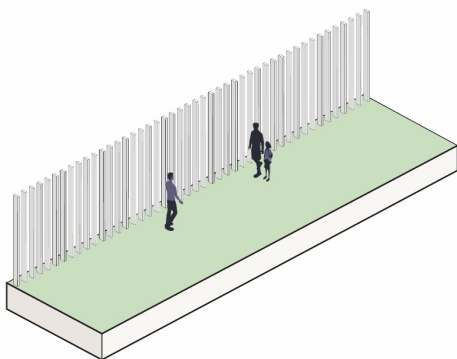
Vegetated barrier:



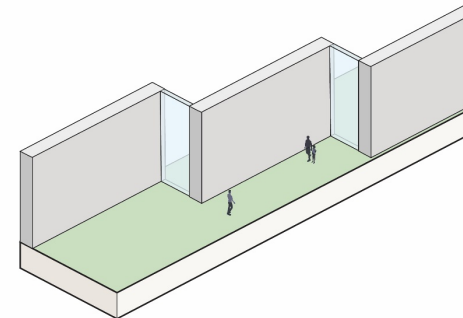
Graphic/artwork:



Semi-transparent/reflective:



Indirect visual connection (to allow a view):



Ontario Line Design Objectives

Elevated guideways and public areas below them

Metrolinx elevated guideway design principles



Examples of activations in public areas below guideways

Performance space in Mexico City



Examples of activations in public areas below guideways

Gathering space in Miami, Florida



Examples of activations in public areas below guideways

Pop-up market space in Jefferson, Indiana



Examples of landscaping to maximize screening

Vegetation under SkyTrain in Richmond, BC



Examples of landscaping to maximize screening

Streetscaping in commercial corridor under SkyTrain in Richmond, BC



What's next for the Ontario Line's North segment

Upcoming community engagement opportunities

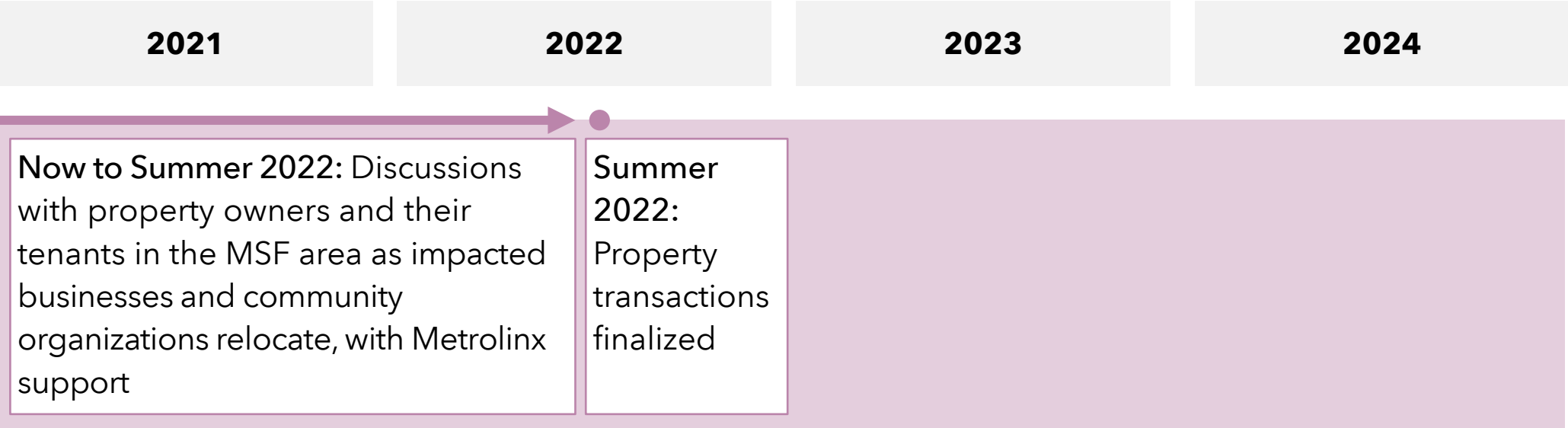
- Pop-ups in Thorncliffe Park community
- Community working groups and public survey on design options in Thorncliffe Park and Flemingdon Park
- Queen Street community office now open at 770 Queen St E; East York Town Centre office under renovation to open soon
- Ontario Line Environmental Impact Assessment Report – draft will be released in January 2022 for public input



North segment timelines

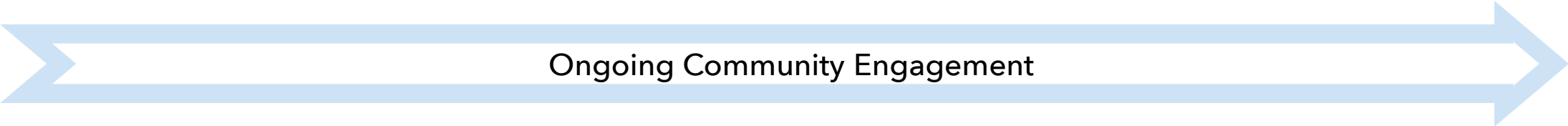
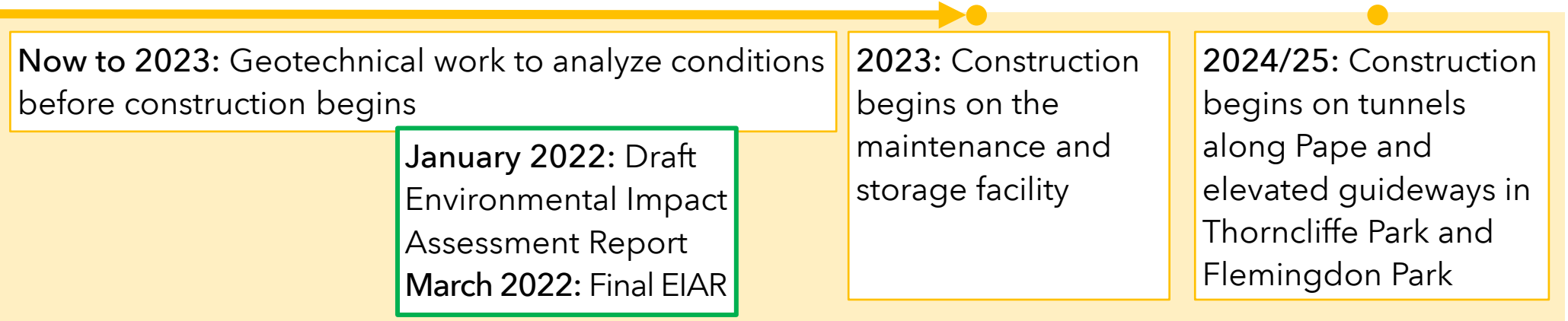


Property Discussions for MSF area





Environmental Assessment + Construction

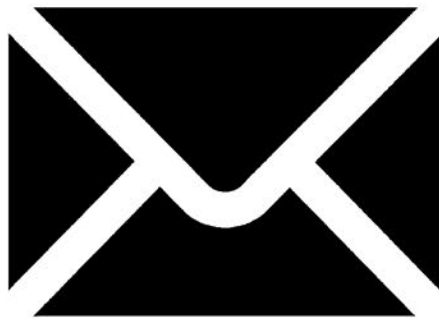


Construction timelines are subject to change

Contact us

Your feedback is vital in helping us to move the Ontario Line forward in a way that strengthens the community. We are grateful for your input.

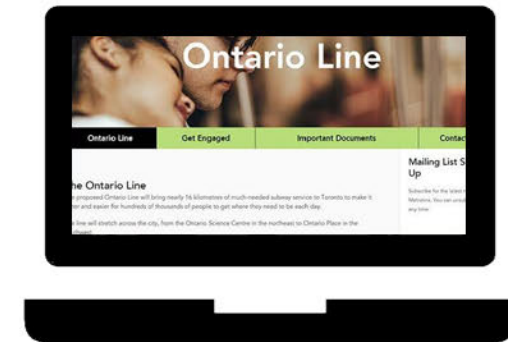
To stay up to date on upcoming virtual events and the latest Ontario Line news, sign up for our e-newsletter at [Metrolinx.com/OntarioLine](https://metrolinx.com/OntarioLine).



OntarioLine@Metrolinx.com



416-202-5100



[Metrolinx.com/OntarioLine](https://metrolinx.com/OntarioLine)

