

Legend

Dundas Bus Rapid Transit Mississauga Project Area

Study Area Portion Boundary

Socio-Economic Land Use Study Area

Dundas Bus Rapid Transit Mississauga East Report

Dundas Bus Rapid Transit Mississauga West Report

Land Use (from City of Mississauga Official Plan)

Automotive Service Commercial

Community/Cultural

General Retail Commercial

Mixed Residential Commercial < five storeys

Mixed Residential Commercial >= five storeys

Office

Open Space/Greenlands

Other Retail

Place of Religious Assembly

Public or Municipal Parking

Residential Apartments

Residential Detached

Residential Other Multiples

Residential Semi-Detached

Residential Townhouses

School

Transportation Right-of-Way

Utility/Public Work

Vacant

Dundas Bus Rapid Transit Mississauga East Report
Socio-Economic and Land Use Study

Land Use - City of Mississauga

0 50 100 200 300
Meters
DATUM: NAD 1983 UTM Zone 17N

Data Sources:
Contains information licensed under the Open Government Licence Ontario, City of Toronto, City of Mississauga and Town of Oakville.
Keymap provided by ESRI.

Aug, 2021

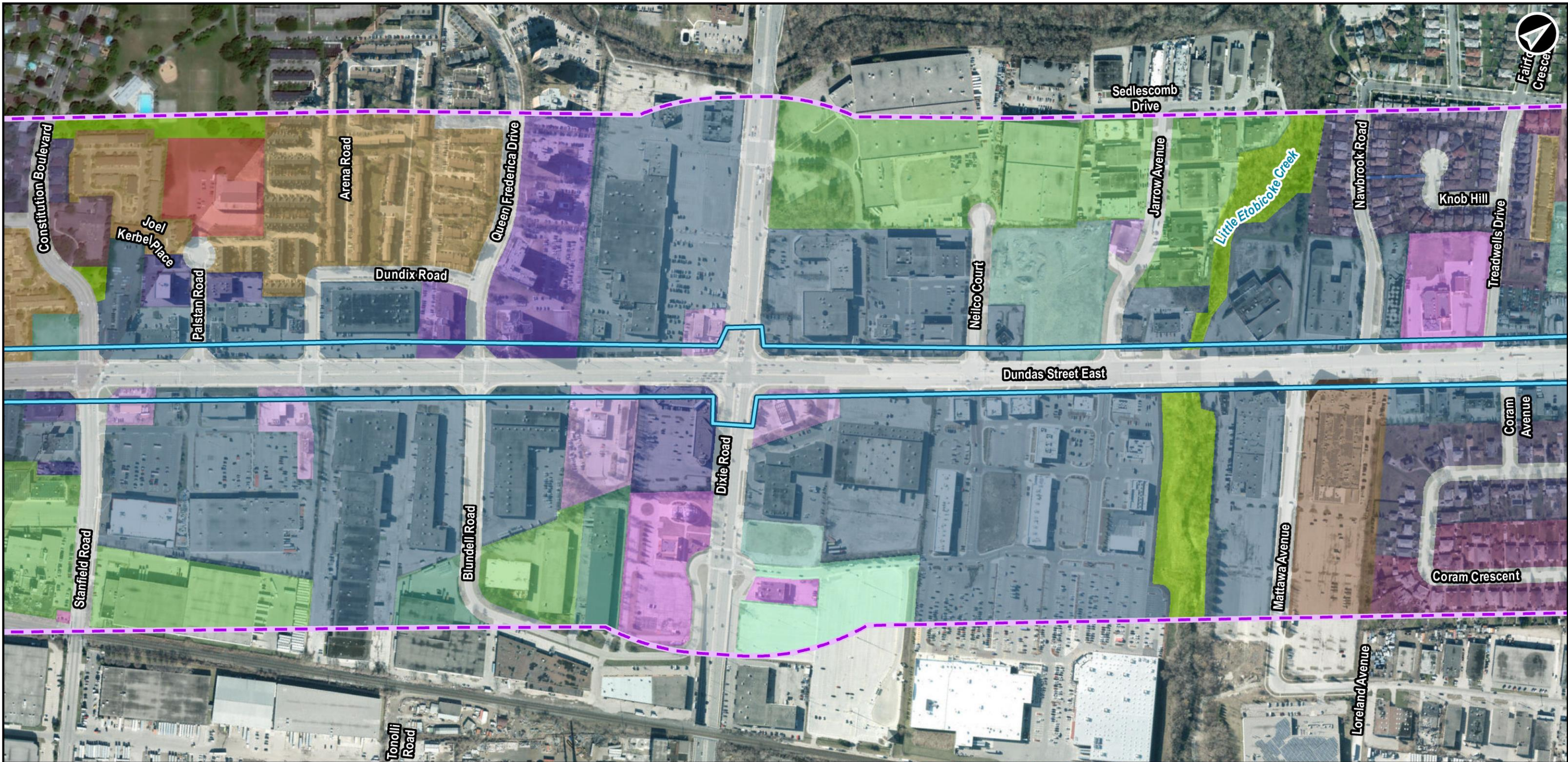
1:5,000

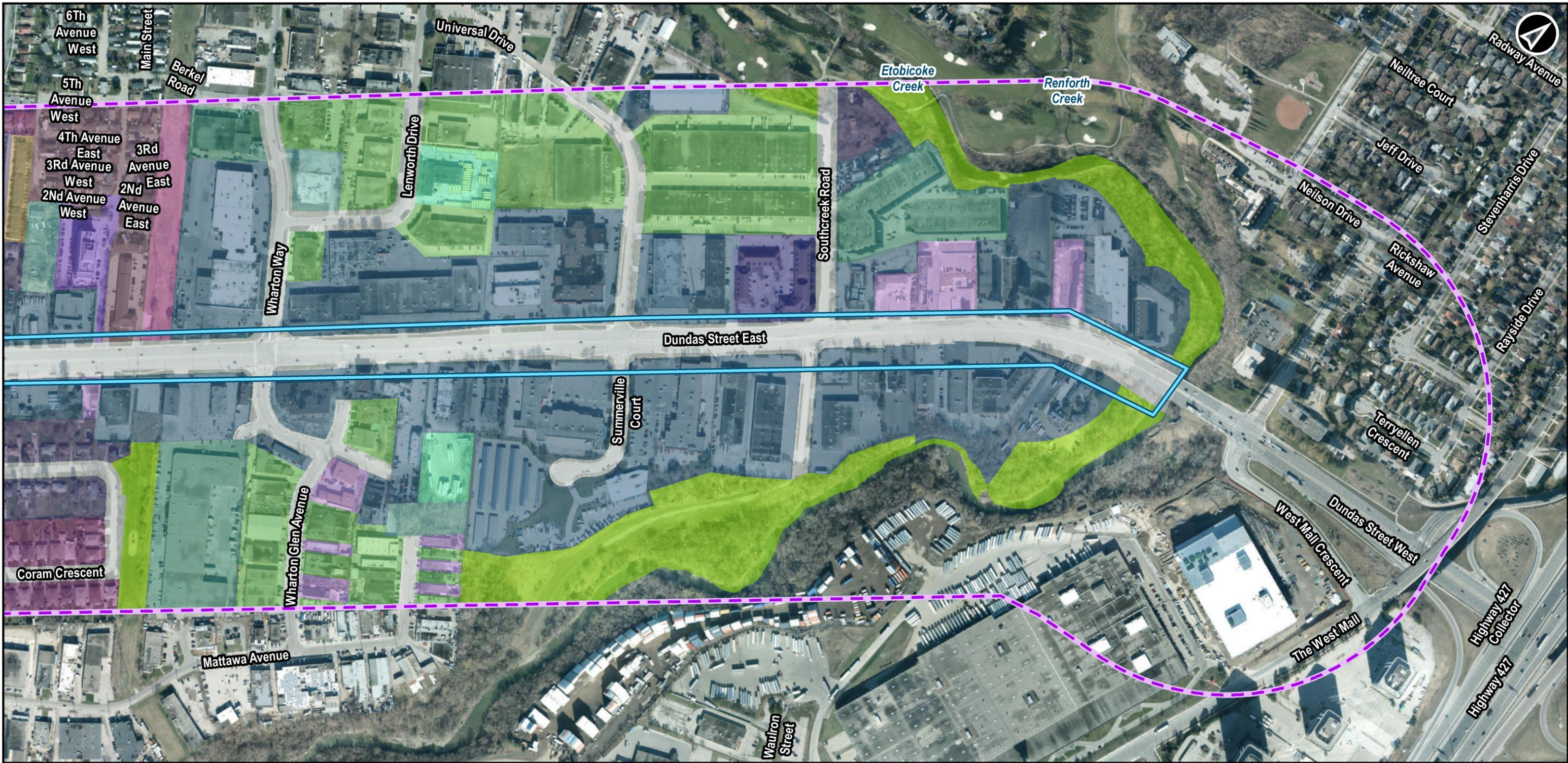
P#: 60645291

REV: 00

Figure A3-1

Map Location





Legend

Dundas Bus Rapid Transit Mississauga Project Area

Study Area Portion Boundary

Socio-Economic Land Use Study Area

Dundas Bus Rapid Transit Mississauga East Report

Land Use (from City of Mississauga Official Plan)

Automotive Service Commercial

General Retail Commercial

Industrial General

Industrial Heavy

Industrial and Commercial Multiples

Office

Open Space/Greenlands

Residential Apartments

Residential Detached

Residential Other Multiples

Residential Semi-Detached

Residential Townhouses

Transportation Right-of-Way

Utility/Public Work

Vacant

Dundas Bus Rapid Transit Mississauga East Report
Socio-Economic and Land Use Study

Land Use - City of Mississauga

050100200300

Meters

DATUM: NAD 1983 UTM Zone 17N

Data Sources:
Contains information licensed under the Open Government Licence Ontario, City of Toronto, City of Mississauga and Town of Oakville.
Keymap provided by ESRI.

METROLINX

AECOM

Aug, 2021

1:5,000

P#: 60645291


REV: 00


Figure A3-4

Map Location





Legend

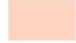
 Dundas Bus Rapid Transit Mississauga Project Area


 Study Area Portion Boundary


Socio-Economic Land Use Study Area

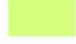
 Dundas Bus Rapid Transit Mississauga East Report

 Neighbourhoods


 Apartment Neighbourhoods

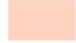
 Core Emplment Area


 Natural Area


 Other Open Space Areas (Including Golf Course, Cemeteries, Public Utilities)

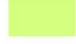
Land Use (from City of Toronto Official Plan)


 Neighbourhoods

 Apartment Neighbourhoods

 Core Emplment Area

 Natural Area

 Other Open Space Areas (Including Golf Course, Cemeteries, Public Utilities)



Map Location

Dundas Bus Rapid Transit Mississauga East Report
Socio-Economic and Land Use Study


Land Use - City of Toronto

0125250

Meters

DATUM: NAD 1983 UTM Zone 17N

Data Sources:
Contains Information licensed under the Open Government Licence Ontario, City of Toronto, City of Mississauga and Town of Oakville.
Keymap provided by ESRI.

**METROLINX**

Apr, 20211:5,250

P#: 60645291REV: 00


**AECOM**

Figure A4

Map location: E:\AECOM\BACKUP\06045291_DundasBRT\Design\01_Report\social\CECR_Report\06045291_DundasBRT_SocioEc_LandUse_Toronto_0604.mxd
Date Saved: 4/22/2021 11:08:22 AM User Name: Stephanie Cloutier

Photos from Socio-Economic Site Visit

Photo 1: Northwest side of Dundas Street West and Confederation Parkway, facing south



Photo 2: Southwest corner of Dundas Street West and Hurontario, facing east



Photo 3: Northwest corner of Dundas Street East and Kirwin Avenue, facing east



Photo 4: Cawthra Road headed north from the Dundas Street East overpass



Photo 5: Southeast corner of Dundas Street East and Tomken Road, facing west



Photo 6: Southwest corner of Dundas Street East and Tomken Road, facing east



Photo 7: Southeast corner of Dundas Street East and Dixie Road, facing north



Photo 8: Dundas Street West over the Etobicoke Creek, facing east



Photo 9: Dundas Street West passing under Highway 427, facing east



Photos of Etobicoke Creek

Photo 1: View of Etobicoke Creek directly downstream of the bridge structure, May 28, 2020. Substrate directly downstream of the crossing was comprised primarily of cobble and boulders.



Photo 2: View of Etobicoke Creek looking downstream (south) from the bridge structure, May 28, 2020. A riffle exists downstream of the structure.



Photo 3: View of Etobicoke Creek looking upstream (north) from the bridge structure, May 28, 2020. Substrate upstream of the crossing was comprised primarily of cobble and boulders.



Photo 4: View of the main channel of Etobicoke Creek under the bridge crossing looking downstream May 28, 2020. Cobble and boulders are present under much of the structure, which appears suitable to provide suitable spawning habitat for a variety of specialized spawning baitfish species.

