

# Ontario Line

## Leslieville/Riverside Community Working Group, Meeting #7

MARCH 21, 2022

## Land Acknowledgement

Let us take a moment to acknowledge that we are on the traditional territory of Indigenous Peoples including the Anishnabeg, the Haudenosaunee and the Wendat Peoples.

We are all Treaty people. Many of us have come here as settlers and immigrants...in this generation or generations past.

Metrolinx declares its commitment to building meaningful relationships with Indigenous Peoples.

We acknowledge the historic and continued impacts of colonialization and the need to work towards meaningful reconciliation with the original caretakers of the land.

We acknowledge that Metrolinx operates on lands covered by 20 Treaties, and that we have a responsibility to recognize and value the rights of Indigenous Nations and Peoples and conduct business in a manner that is built on the foundation of trust, respect and collaboration.

## Safety Moment

With the weather warming up and a number of pedestrians and cyclists outdoors, below are a few important driver safety tips:

- Look out for pedestrians everywhere, at all times.
- Use extra caution when driving in hard-to-see conditions, such as nighttime or bad weather.
- Slow down and be prepared to stop when turning or otherwise entering a crosswalk.
- Yield to pedestrians in crosswalks and stop well back from the crosswalk to give other vehicles an opportunity to see the crossing pedestrians so they can stop too.
- Never pass vehicles stopped at a crosswalk. There may be people crossing where you can't see.
- Never drive under the influence of alcohol and/or drugs.
- Follow the speed limit, especially around people on the street, in school zones and in neighborhoods where children are present.
- Be extra cautious when backing up and look for pedestrians



## Rules of Engagement for Virtual Meetings

To help this meeting run as smoothly as possible, please adhere to the following rules of engagement:

- Remain muted at all times, unless you are called upon.
- Questions will be taken in the order they are received.
- Please use the "hands up" icon to raise your hand to speak.
- Please be respectful to all meeting participants.
- Please allow all people the chance to speak before taking a second turn.
- Video is encouraged, but not required.
- This meeting will be recorded and shared online.

# Agenda

1. Introductions
2. Terms of Reference Elements
  1. Definition of Areas
3. Next Steps

# Terms of Reference



Definition  
of Areas



Design  
Challenges



Limitations  
and Exclusions



Other Factors  
to Consider



Timeline



Budget



Design Brief



Firms to  
Engage



Criteria for  
Jury Selection



Criteria for  
Judging and  
Selection Process

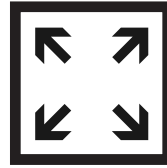
# Terms of Reference



Definition  
of Areas



Design  
Challenges



Limitations  
and Exclusions



Other Factors  
to Consider



Timeline



Budget



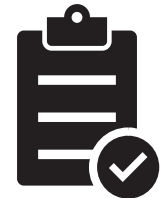
Design Brief



Firms to  
Engage



Criteria for  
Jury Selection



Criteria for  
Judging and  
Selection Process

# Terms of Reference - Schedule

Design Contest Schedule		March				April				May					June				July				August				
Step 1: Define Terms of Reference		7	14	21	28	4	11	18	25	2	9	16	23	30	6	13	20	27	4	11	18	25	1	8	15	22	29
1	RFP Development and Stipend Budget																										
2	Definition of Areas*																										
3	Define Design Challenges, Limitations and Exclusions*																										
4	Confirm Timeline and Budget																										
5	Define Jury Requirements*																										
6	Define Award Criteria*																										
7	Conduct Q & A with Industry*																										
8	Finalize TOR and Design Brief*																										
9	Select Jury*																										
Step 2: Implement Design Competition																											
10	Issue RFP for Design Competition																										
11	Shortlist Firms																										
12	Walking Tour and Visioning Public Engagement																										
13	Design Contest Black Out Dates																										
14	Presentation and Selection of Winning Firm																										
15	Iterative Comment Resolution*																										
16	Public Presentation of Design Contest																										
17	Final Joint Corridor Design Guidelines																										
18	Validate Constructability, Impacts and Costs																										
19	Issue Contract Addendum for Peer Review Consultant																										

# Design Contest

## Focus Elements

The following aspects of the project's design will be the focus of this design competition and must be within the Project site:

### 1. Landscape Design

- a. Trees, vegetation, berms, embankments, furnishings, lighting

### 2. Bridge Design

- a. Underpass Lighting, Underpass Activation, Public Art, Abutment Finishes, Bridge Span Public Realm

### 3. Noise walls

- a. Material, Transparency / Opacity, Colour, Screens, Bird-collision deterrent decals

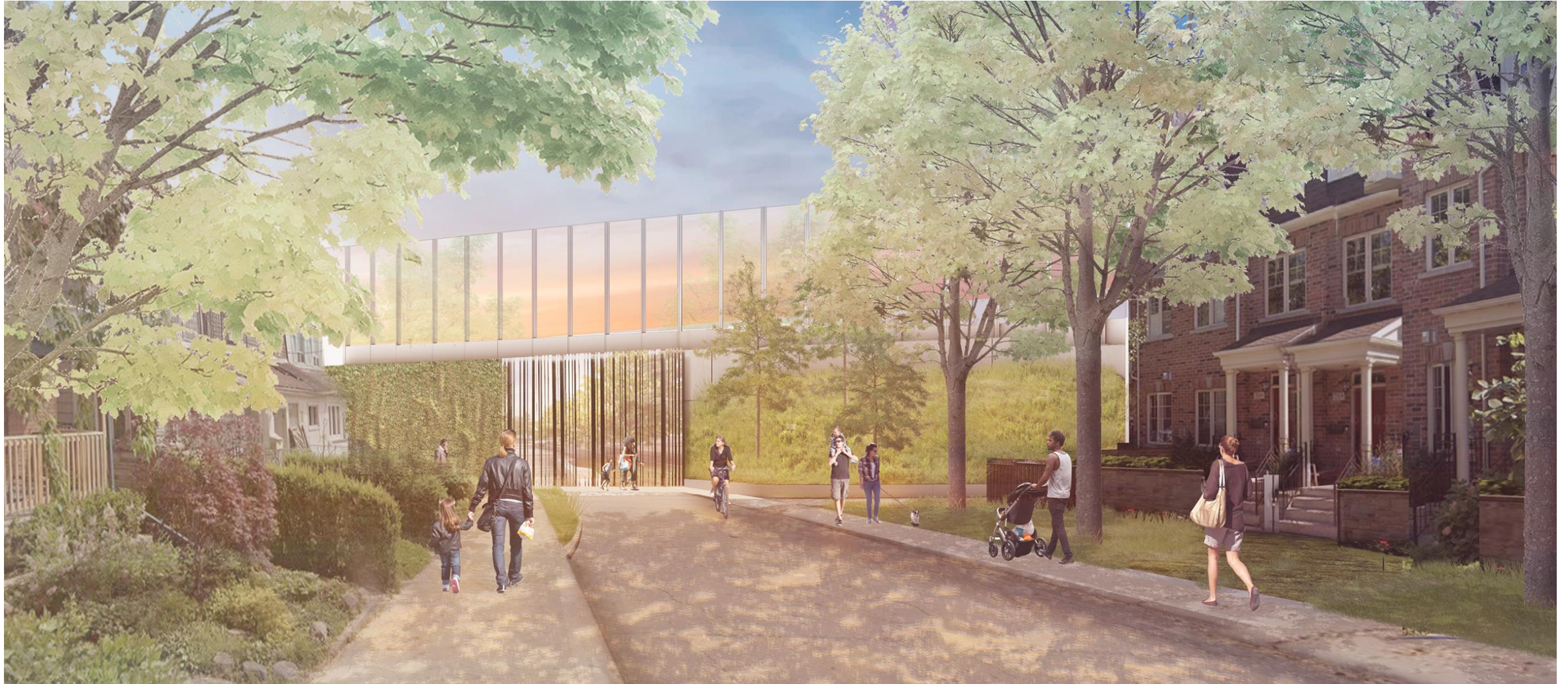
### 4. Retaining Walls

- a. Surface/ Concrete Pattern, Bas-reliefs, Screening, Programing

## View Down First Ave



## View Down First Ave



# Definition of Areas - Four Community Zones

*Note: Only designs for Metrolinx (MX) Sites will be reviewed as part of the Design Competition. Any design work beyond MX Sites are not part of Metrolinx's mandate of delivering transit.*

**Zone 1** – Eastern Avenue bridge to just south of Queen Street East.

**Zone 3** - South end of the Dundas Street bridge, to south end of Gerrard Station platform.



## LEGEND

 MX Site

**Zone 2** - Queen Street bridge to just below the Dundas Street bridge.

**Zone 4** - South end of the proposed Gerrard Station platform to Pape Avenue to the east of the station.

# Definition of Areas - Zones



Queen St E Bridge looking West, Leslieville Station Beyond

**LEGEND**

MX Site

N – Integrated Noise Wall

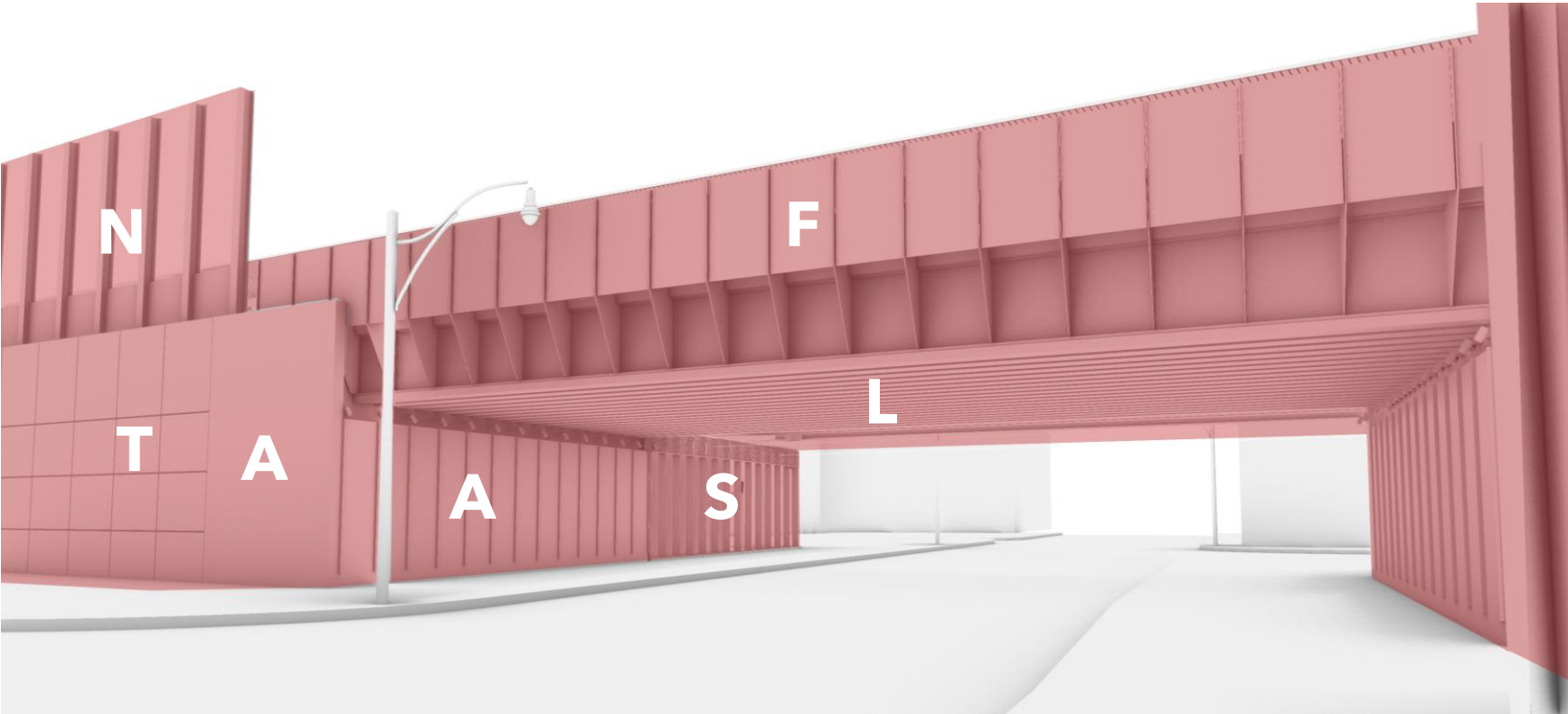
T - T Wall

F - Bridge Façade

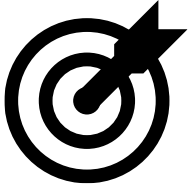
L - Bridge Lighting

A - Abutment

S - Station



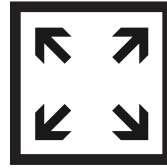
# Terms of Reference



Definition  
of Areas



Design  
Challenges



Limitations  
and Exclusions



Other Factors  
to Consider



Timeline



Budget



Design Brief



Firms to  
Engage



Criteria for  
Jury Selection



Criteria for  
Judging and  
Selection Process

## Next Steps

- Send TOR to City
- Send TOR to CAC
  - Follow up small group meeting to address comments

