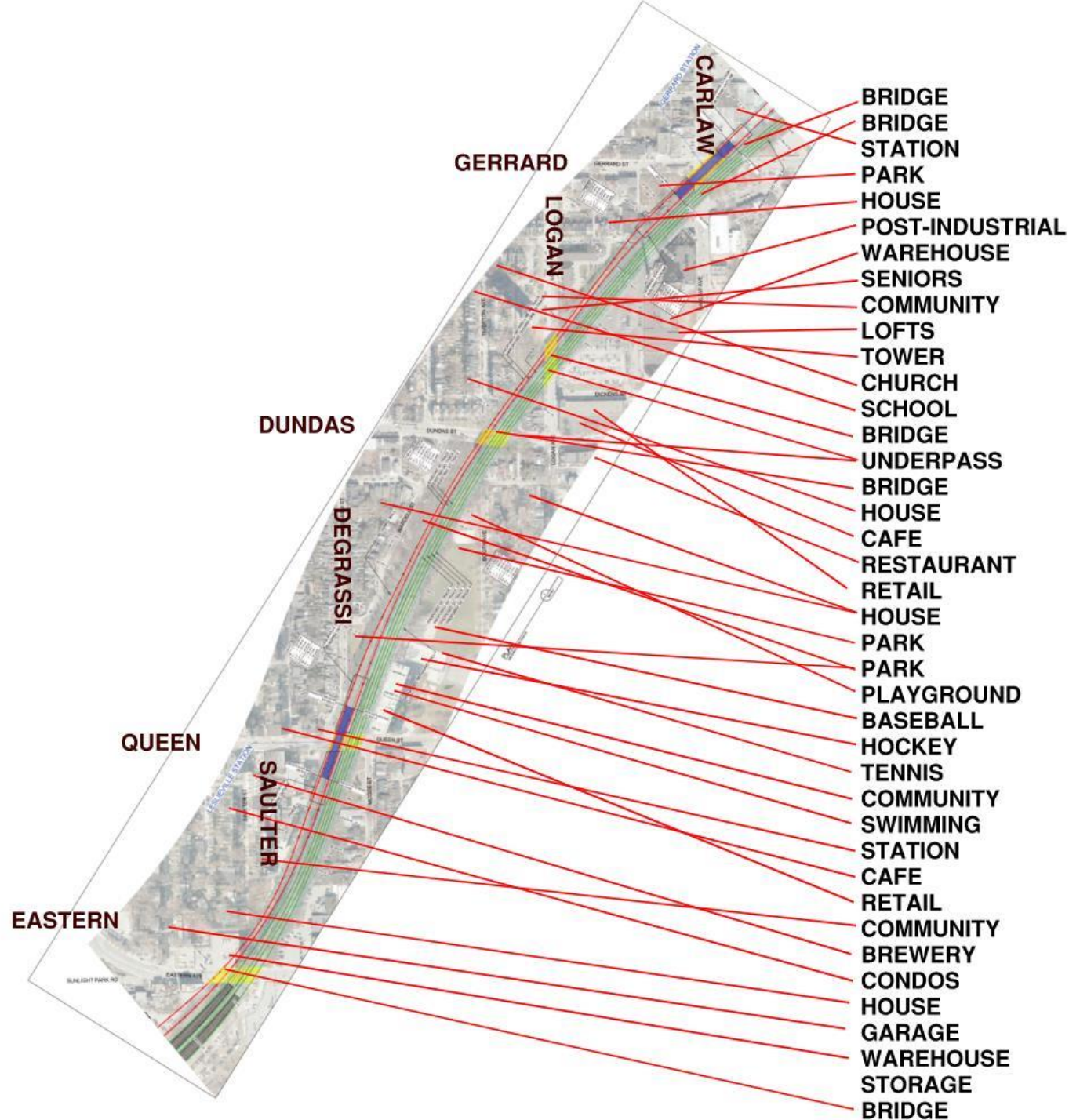


*“...we need excess, something to live up to.”*

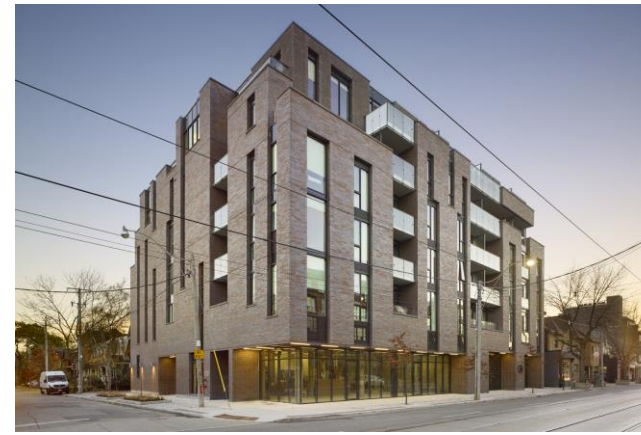
R.C. Harris discussing the design of the water filtration plant with Patrick from “In the Skin of A Lion”.



# ADJACENCIES

A brief list of occupancies adjacent to the rail line

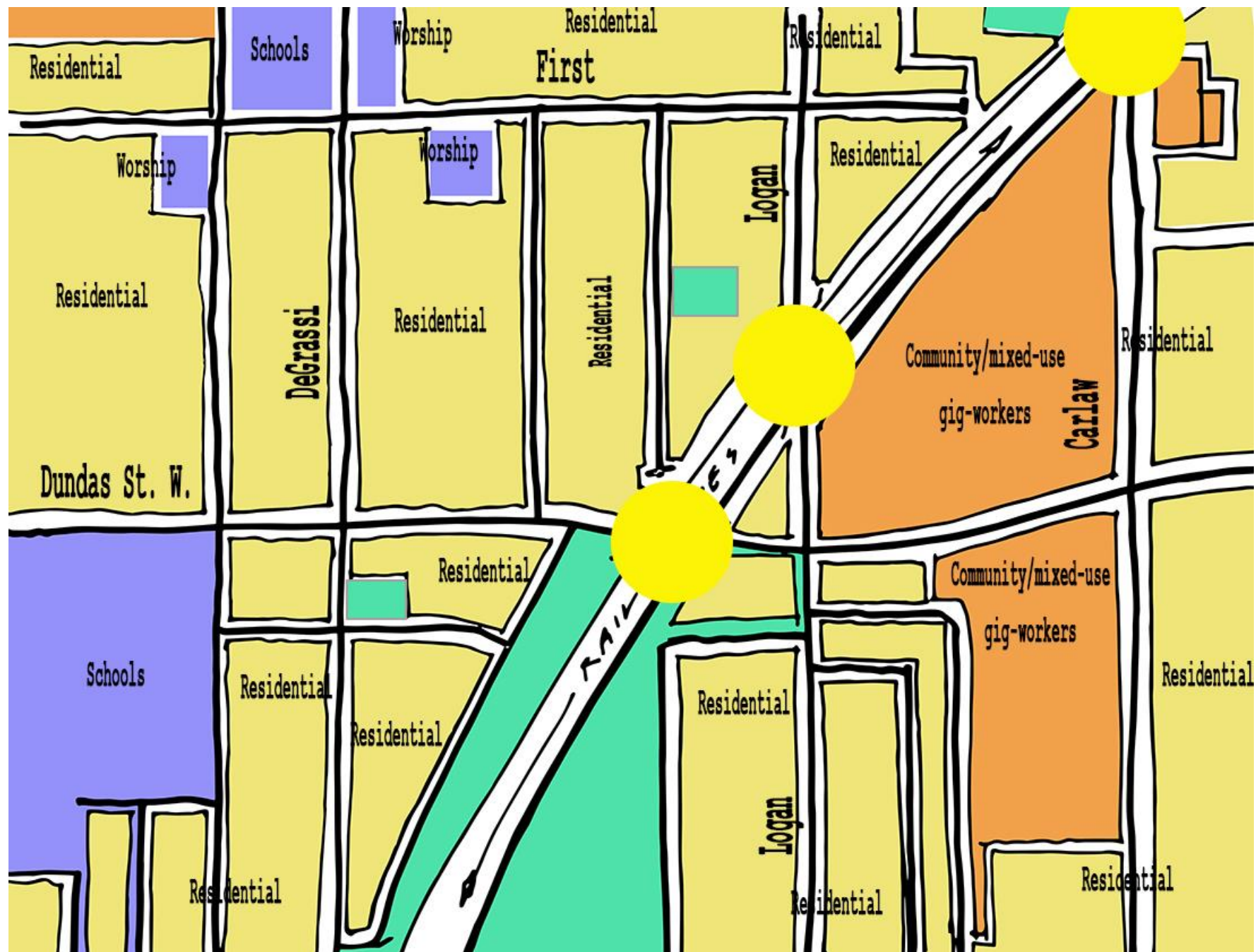


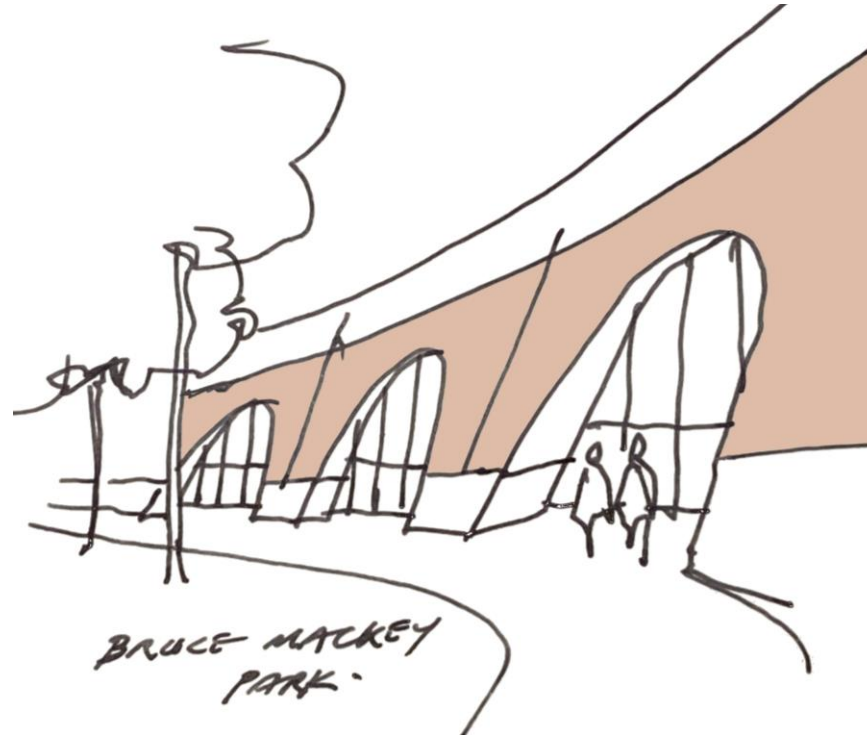


# CONTEXT

Architectural styles found in vicinity of rail line

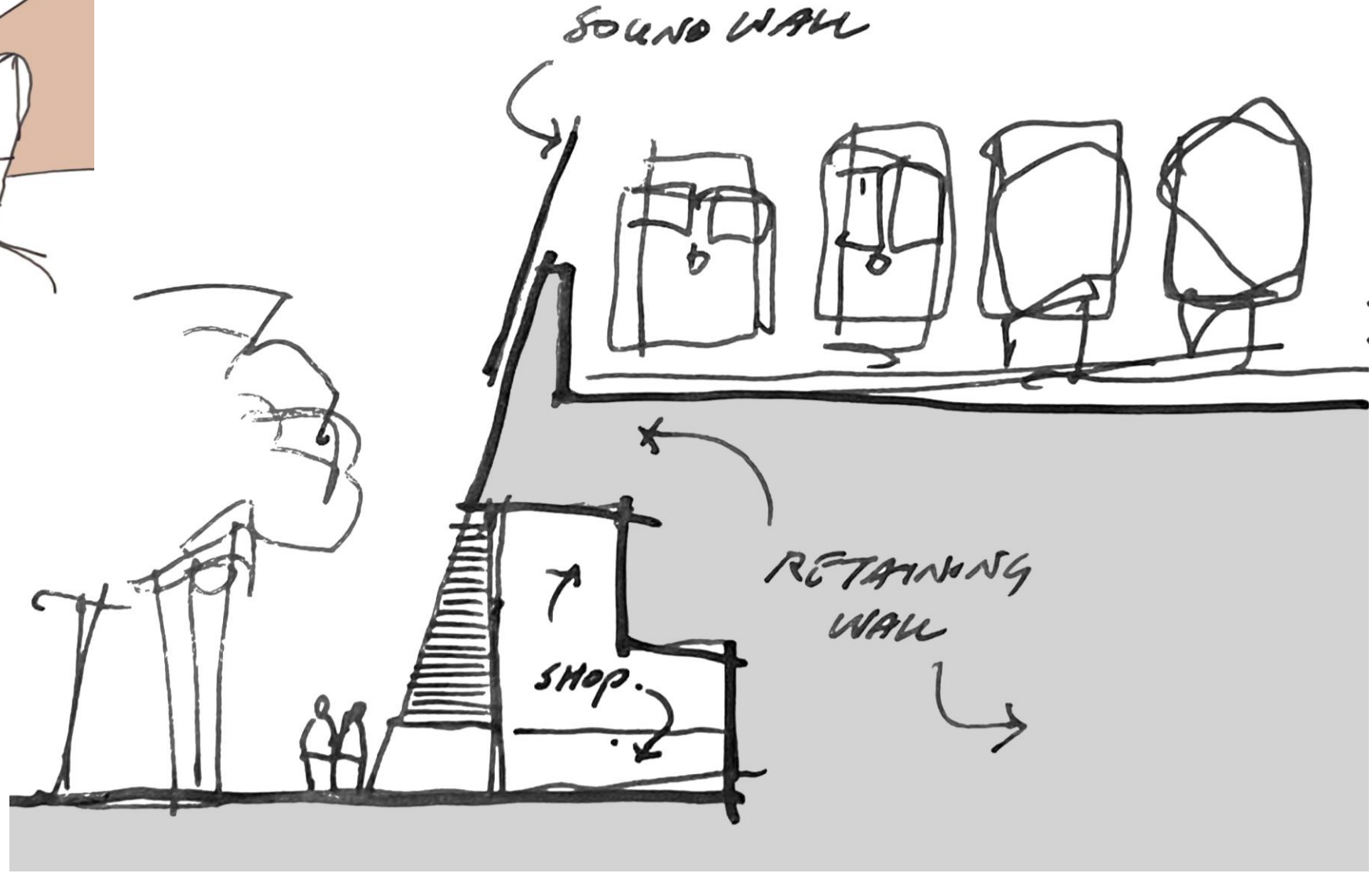






**RETAINING WALLS**





**RETAINING WALLS**





**RETAINING WALLS**





**RETAINING WALLS**

















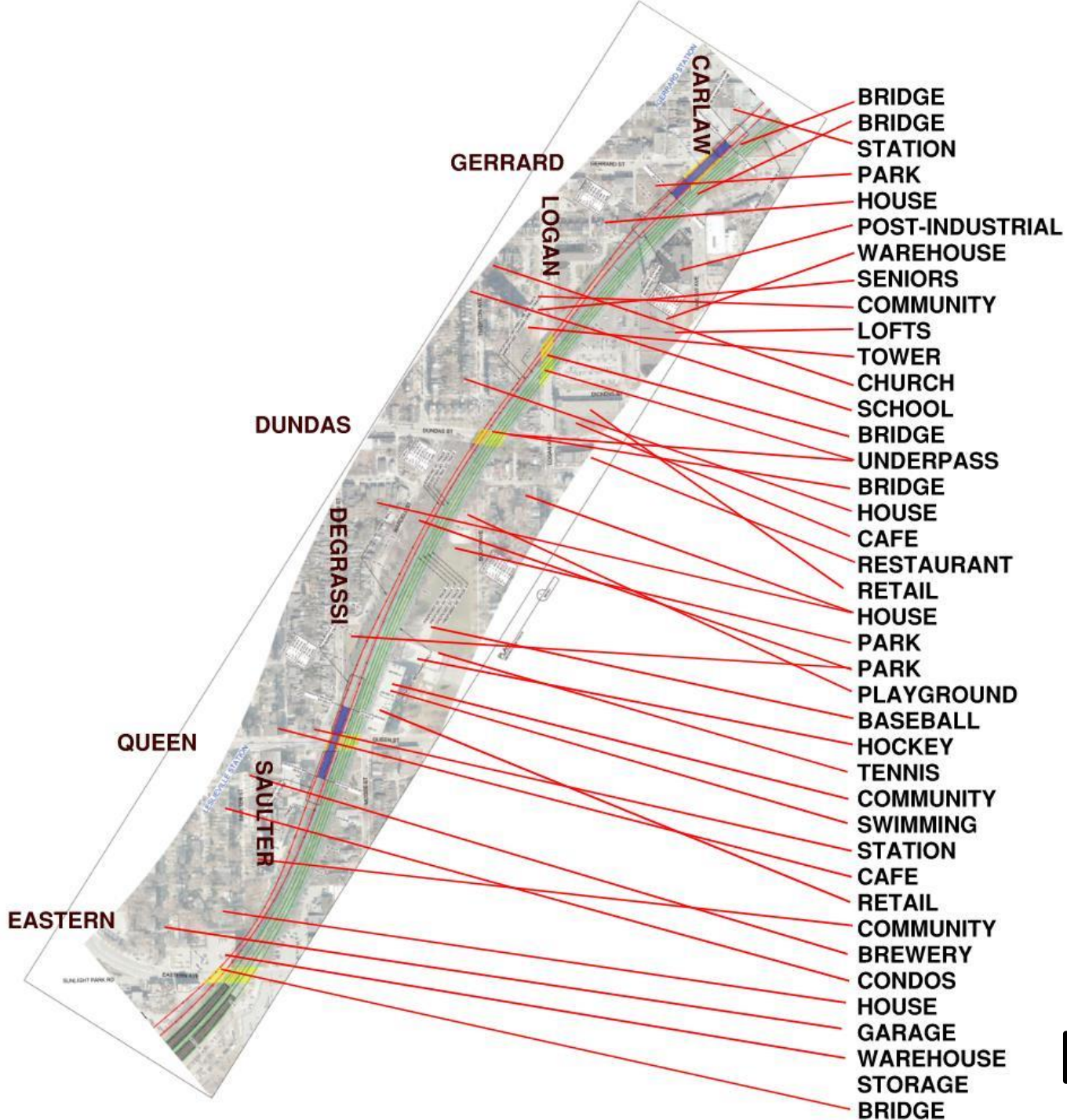












# DESIGN OPPORTUNITIES