

Davenport Diamond Guideway Construction Liaison Committee Meeting #25

June 27, 2022

For more info: metrolinx.com/davenport
For further feedback: TorontoWest@metrolinx.com

AGENDA

- Welcome and Introductions
- Meeting Purpose, Expectations & Code of Conduct
- Safety Moment
- May CLC Minutes & Actions Items
- Construction Update
 - Project Overview
 - Construction Timeline
 - Construction Activity: Completed, In Progress & Four-Week Look-Ahead
- Committee Discussion
- How to Stay Informed
- Next Meeting

MEETING PURPOSE, EXPECTATIONS & CODE OF CONDUCT

PURPOSE

- The monthly Construction Liaison Committee (CLC) meetings are an opportunity for the community to receive a regular cadence of project updates, for Metrolinx to listen to your feedback and collectively come up with mitigation strategies in a respectful and constructive way.

EXPECTATIONS

- During the presentation, please put yourself on mute to help us share all the project information. Once we finish our updates, we will have a discussion and answer any relevant questions you may have about the information we shared.

CODE OF CONDUCT

- Keep requested agenda and discussion items within the scope of the CLC and participate in a respectful manner - do not interrupt when someone is speaking or dominate discussions and refrain from foul language and derogatory comments.

LAND ACKNOWLEDGEMENT

Let us take a moment to acknowledge that we are on the traditional territory of Indigenous Peoples including the Anishnabeg, the Haudenosaunee and the Wendat peoples.

We are all Treaty people. Many of us have come here as settlers and immigrants...in this generation or generations past.

Metrolinx declares its commitment to building meaningful relationships with Indigenous Peoples.

We acknowledge the historic and continued impacts of colonialization and the need to work towards meaningful reconciliation with the original caretakers of this land.

We acknowledge that Metrolinx operates on lands covered by 20 Treaties, and that we have a responsibility to recognize and value the rights of Indigenous Nations and Peoples and conduct business in a manner that is built on the foundation of trust, respect and collaboration.

SAFETY MOMENT

GRAHAM COMMUTER RAIL SOLUTIONS

May 30th CLC MINUTES & ACTION ITEMS

CONSTRUCTION UPDATE

PROJECT OVERVIEW & CONSTRUCTION TIMELINE

COMPLETED, IN PROGRESS & FOUR-WEEK LOOK-AHEAD

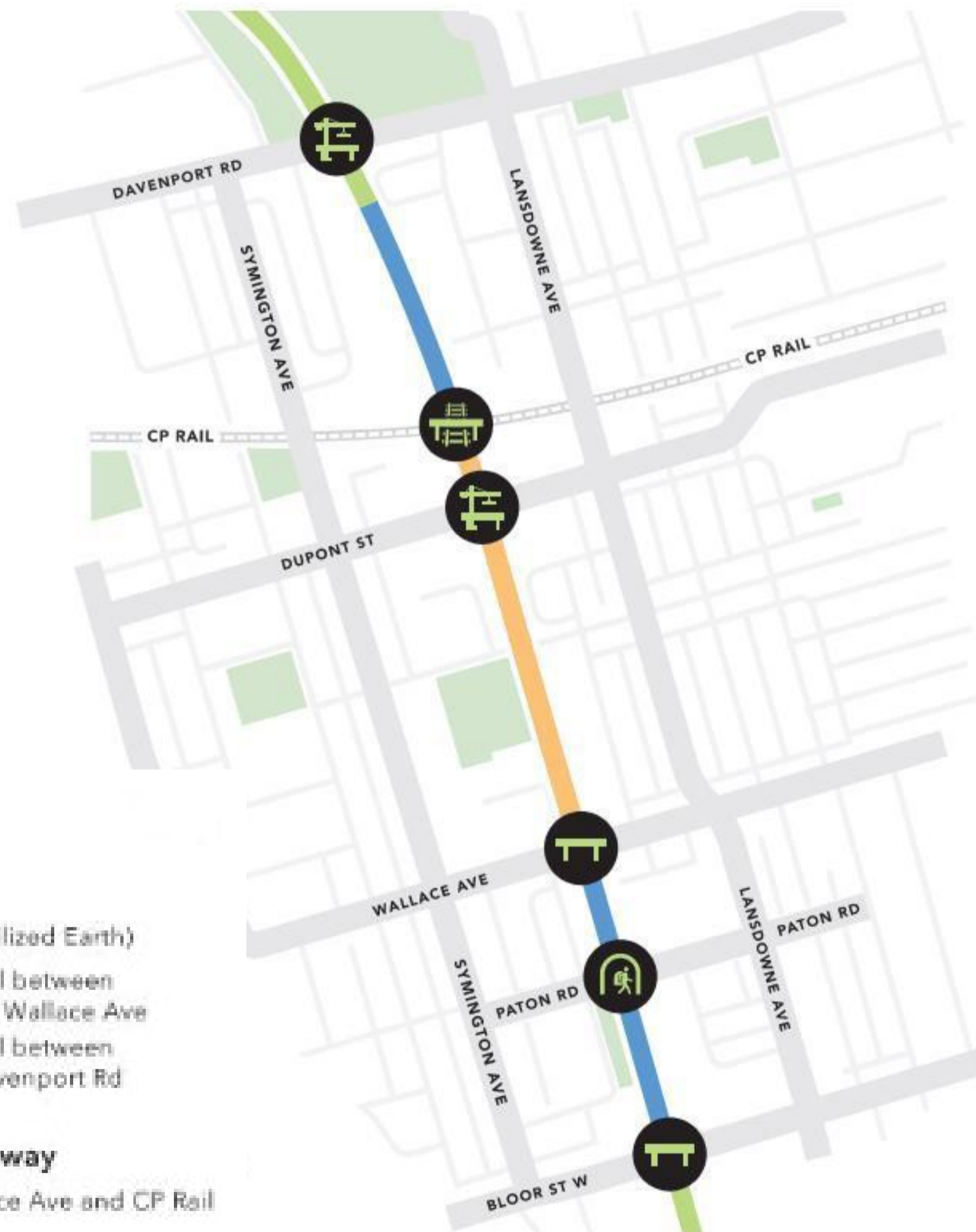
PROJECT OVERVIEW

The **Davenport Diamond Grade Separation** project will prepare and complete the construction of an elevated twin-track guideway between Bloor Street and Davenport Road, west of Lansdowne Avenue, eliminating at-grade crossings, including the busy CP Rail intersection near Dupont Street.

Davenport Diamond Guideway Project Map

MAP LEGEND

- **MSE Wall**
(Mechanically Stabilized Earth)
 - South MSE Wall between Bloor St W and Wallace Ave
 - North MSE Wall between CP Rail and Davenport Rd
- **Elevated Guideway**
 - Between Wallace Ave and CP Rail
- **Barrie GO rail line**



INFOGRAPHIC LEGEND



Davenport bridge rehabilitation



New bridge over CP Rail tracks



Dupont bridge rehabilitation



New bridge at Wallace Ave

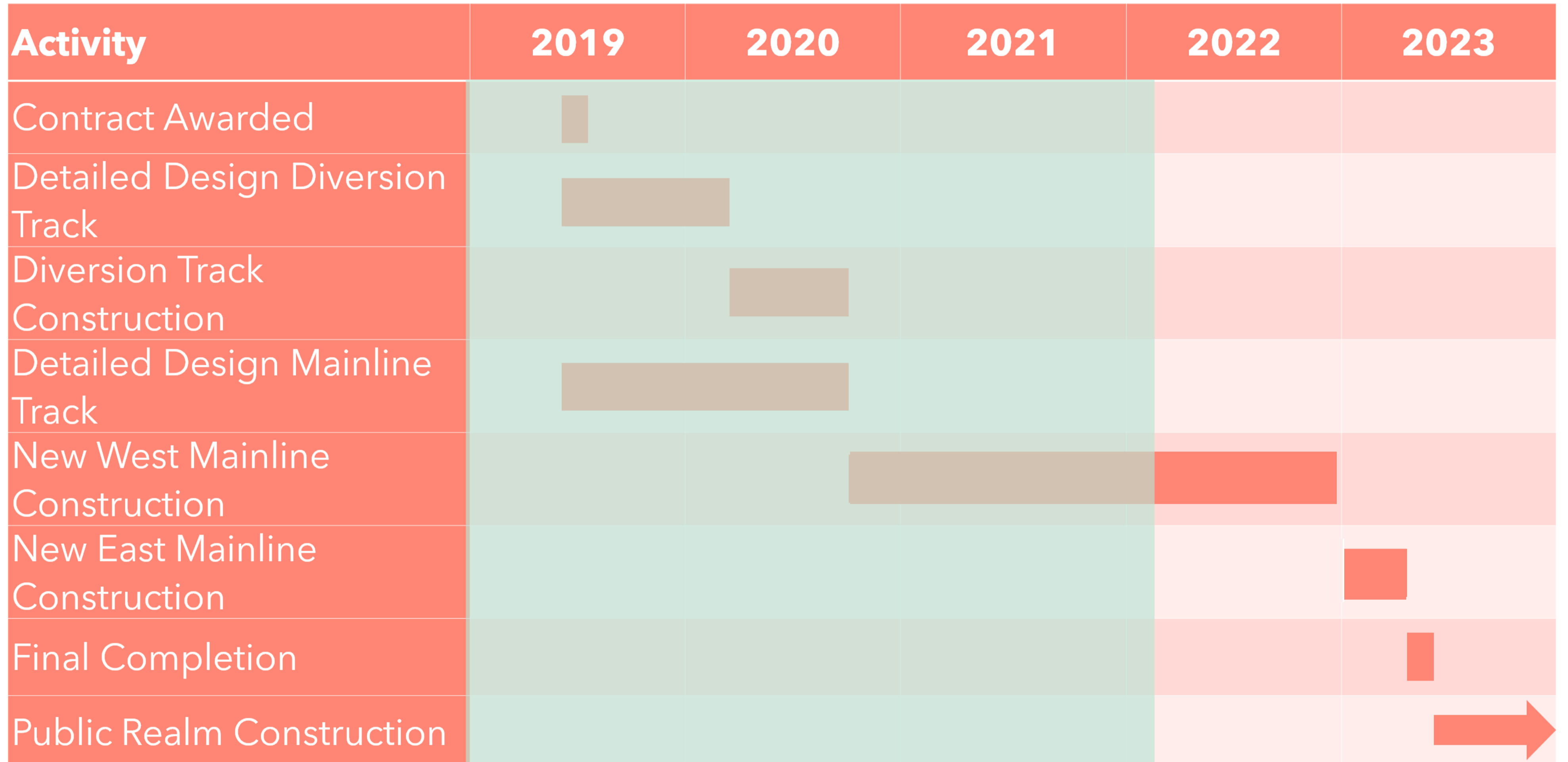


New pedestrian tunnel at Paton Rd



Bloor St bridge replacement

CONSTRUCTION TIMELINE



OVERNIGHT WORK

Why is there so much overnight construction activity on this project?

The Davenport Diamond Guideway project poses unique challenges:

- We are working in an active rail corridor with GO trains passing by during the daytime. Weekday trains run until 11:30 p.m.
- We have very limited space to work within.
- We have limited access points into the rail corridor.

Because we are working next to a live track, we follow strict standards and guidelines that dictate what we can and cannot do under a train load, i.e., when trains are passing.

When our work affects or has the potential to affect the integrity of the track, that work cannot be done while trains are running; that work must be carried out when trains are not running, which is overnight. **This is the main reason for overnight construction on this project.**

We work overnight to protect the track, train operators and passengers, our crews, the community, and nearby residents.

Upcoming night work:

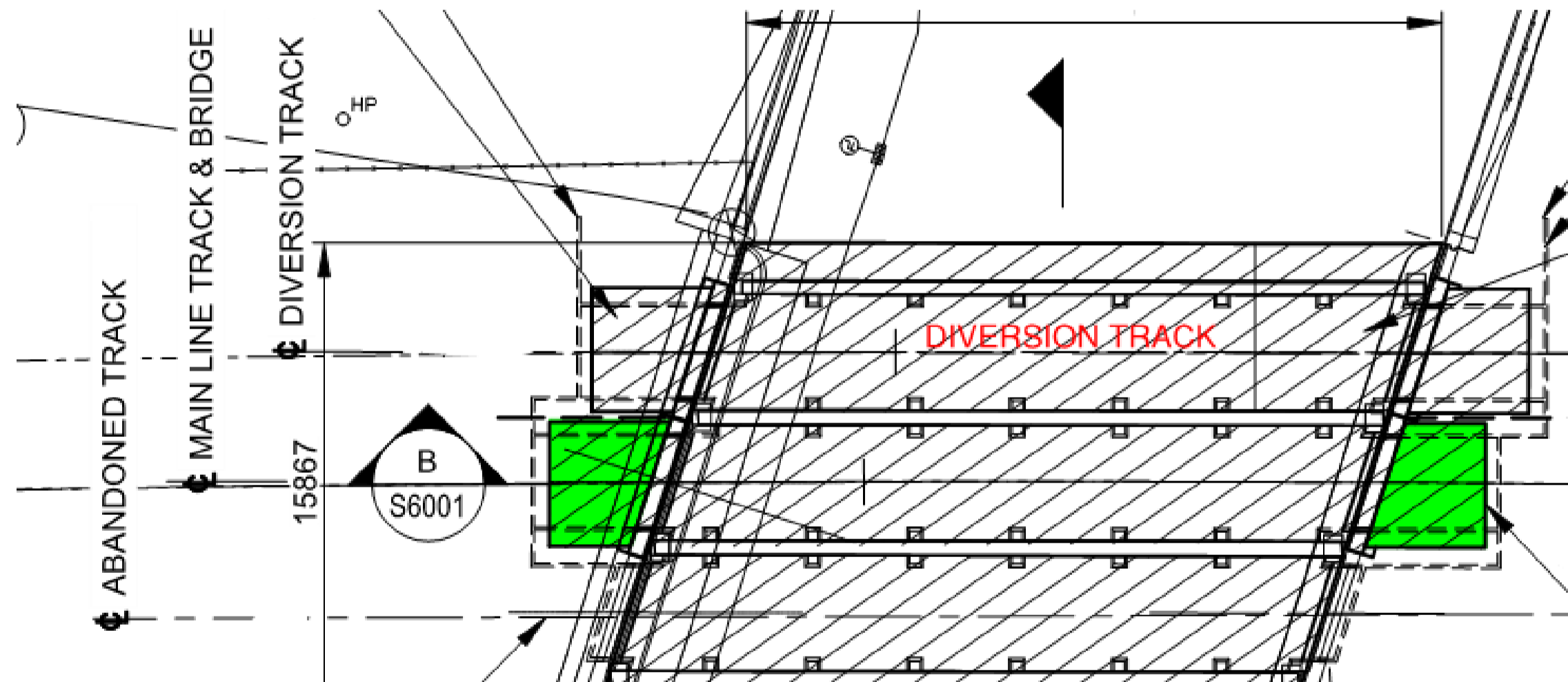
- Ongoing: Moving rail material and welding
- Week of June 26: Installation of rail crossing south of Bloor
- Week of July 03: Excavation and Grading between Wade and Paton

CONSTRUCTION ACTIVITY: COMPLETE

Davenport Bridge Rehab - Approach Slab Installation

As part of the Davenport Bridge rehabilitation work, we need to replace the existing approach slabs. This must be completed in two stages while maintaining train traffic. The first stage (highlighted in green) was completed over the weekend of June 04-05.

Stage 2 will not be completed until 2023 once the train is moved onto the Mainline Track and the Diversion Track is removed from service.



Davenport Bridge (top view).

CONSTRUCTION ACTIVITY: IN PROGRESS

North MSE (Mechanically Stabilized Earth) Wall - Construction

Construction on the north MSE wall between the CP Rail tracks and Davenport Road is almost complete.

MSE walls are massive soil structures that have been strengthened by placing reinforced straps in horizontal layers throughout the height of the wall that are connected to pre-cast concrete panels.

The panels fit together like puzzle pieces to keep everything in. The combination of panels and straps allows the wall to be built with a near vertical face because of the tension produced by the straps.

Crews are currently installing the noise walls and ductbanks on top of the MSE Wall, as well as placing sub-ballast for install of rail tracks which will begin in mid-July 2022.

What to expect:

- Monday to Friday, approximately 7 a.m. to 6 p.m.
- Material/panel deliveries, construction activity, vibration and noise
- Expected duration: Noise wall and track installation until end of July 2022



CONSTRUCTION ACTIVITY: IN PROGRESS

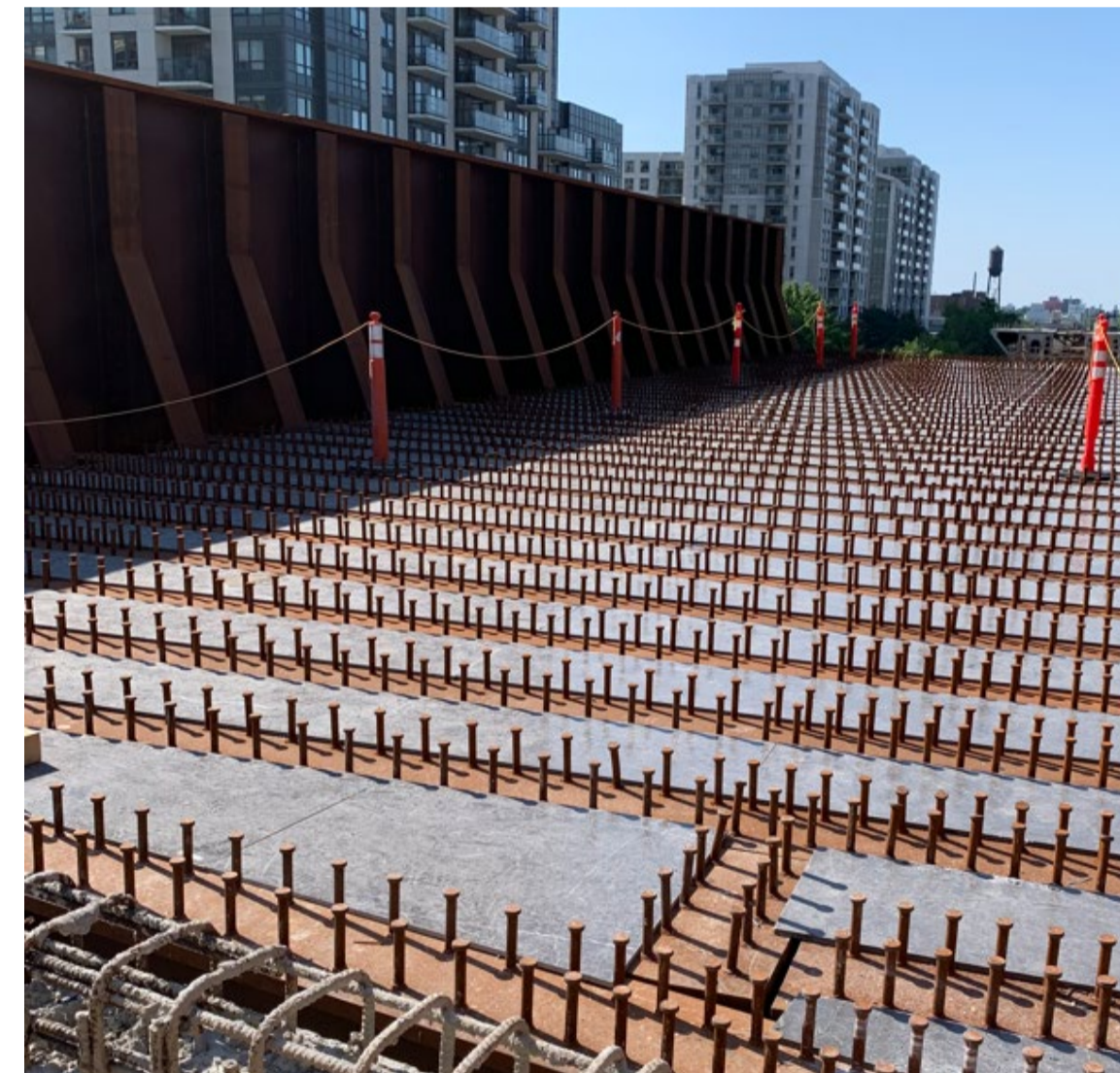
CP Bridge Deck

Construction of the CP Bridge deck is underway with installation of formwork in preparation for the CP concrete deck pour in early July 2022.

Note: All graffiti will be covered prior to project completion.



CP bridge girders (looking west).



CP bridge deck formwork for concrete pour.

CONSTRUCTION ACTIVITY: IN PROGRESS

640 Lansdowne Avenue - Contractor's Yard

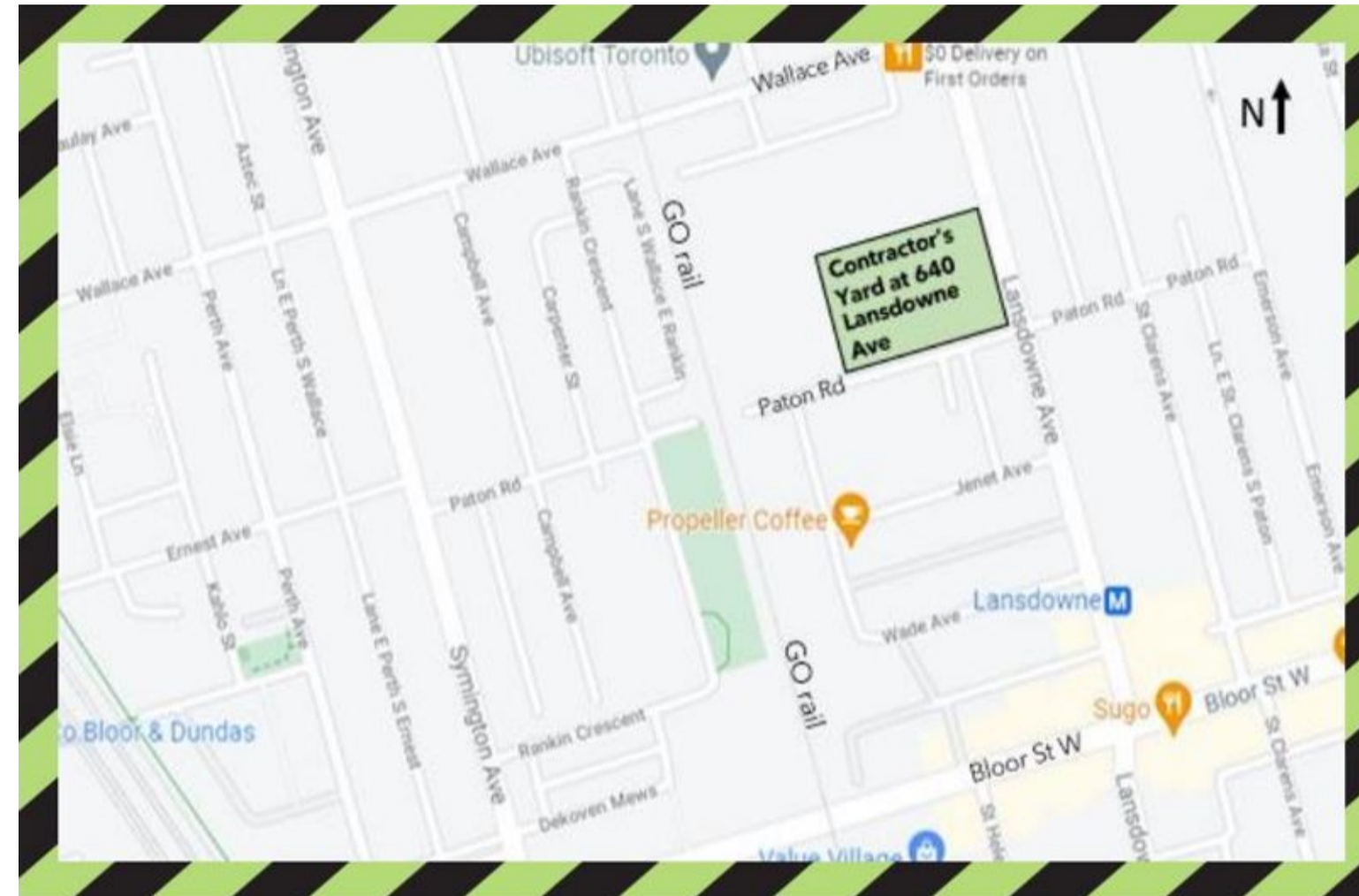
As Elevated Guideway construction gets underway with girder installation, construction activity and truck traffic at our yard located at 640 Lansdowne Avenue, at the corner of Paton Road, has started to increase.

Truck traffic is increased due to frequent concrete girder deliveries into the yard via large tractor trailers and regular girder transportation from the yard into the rail corridor via self-propelled modular transporters (SPMTs).

Within the yard, crews will be post-tensioning the girders and a gantry crane will be used to offload the girders.

What to expect:

- Daily from 7 a.m. to 7 p.m.
- Possible late night/overnight activity and traffic
- Residents in the immediate area can expect the following impacts:
 - Increased construction activity, truck traffic, and noise
 - Daily girder deliveries and transportation in and out of the yard
 - Daily work in the yard
- Anticipated completion date is September 2022.



Concrete girder segments stored in Lansdowne yard

CONSTRUCTION ACTIVITY: IN PROGRESS

Elevated Guideway - Girder Installation

The elevated guideway portion of the project is made up of precast concrete girders that will eventually support the track.

With the girders in place over the Dupont Bridge, girder installation is now underway for the remaining sections of the guideway. Girders are transported from the Lansdowne Yard into the corridor at Wallace Avenue and lifted with the gantry crane then “launched” to final position.

Start: May 2022

Estimated completion: Summer 2022



Gantry crane north of Wallace Ave (looking north)



Girder Launcher (looking south)

What to expect:

- Daily from 7 a.m. to 7 p.m.
- Possible late night/overnight activity and traffic
- Residents in the immediate area can expect the following impacts:
 - Increased construction activity, truck traffic, and noise
 - Daily girder transportation from Lansdowne yard to corridor at Wallace Ave
 - Daily parking restrictions on Wallace Ave

CONSTRUCTION ACTIVITY: IN PROGRESS

Electrical and Communications Rooms

Work has begun on the Electrical and Communications Rooms. The concrete footings and footing walls to support the structures are now complete. Work will continue throughout July with installation of ductbanks and floor slabs within the structures.



Design rendering of Electrical and Communications Rooms and Egress Stairway. Electrical and Communication Room footing walls.

CONSTRUCTION ACTIVITY: IN PROGRESS

South MSE (Mechanically Stabilized Earth) Wall - Construction

Construction for the south MSE wall between Bloor Street West and Wallace Avenue is underway.

Similar to the north MSE wall, it is a massive soil structure that has been strengthened by placing reinforced straps in horizontal layers throughout the height of the wall that are connected to pre-cast concrete panels.

The panels fit together like puzzle pieces to keep everything in, and the combination of panels and straps allows the wall to be built with a near vertical face because of the tension produced by the straps.

We are currently working on panel installation on the sections of wall from Bloor St to Paton Rd and from Paton Rd and Wallace Ave as well as noise wall foundation installation.

What to expect:

- Monday to Friday, approximately 7 a.m. to 6 p.m.
- Construction activity, vibration and noise
- Expected duration: Continuing until end of Summer 2022



South MSE Wall exterior (looking north)



South MSE Wall interior (looking north)

CONSTRUCTION ACTIVITY: IN PROGRESS

Paton Rd Pedestrian Underpass

Construction for the Paton Road Pedestrian Underpass is underway.

Concrete footings to support the tunnel structure have been poured. Next up is standing forms for the concrete tunnel walls and roof slab which will begin early July.

Once the underpass is complete, the missing section of the South MSE wall will be constructed on top to form a continuous wall structure from Bloor Street to Wallace Ave.

What to expect:

- Monday to Friday, approximately 7 a.m. to 6 p.m.
- Construction activity, vibration and noise
- Expected duration: Continuing until Summer 2022



Design rendering of Paton Rd Underpass



Paton Rd Underpass Concrete Footings

CONSTRUCTION ACTIVITY: UPCOMING

Bloor Street Utility Work

Utility work will begin this week on the north sidewalk and continue for approximately two weeks. Crews will then move to the south side and complete utility work within the south sidewalk.

What to expect:

- Monday to Friday, approximately 7 a.m. to 6 p.m.
- Construction activity, vibration and noise
- Expected duration: July to August 2022
- Residents in the area can expect sidewalk closures during work - pedestrians will be detoured to opposite sidewalk during work to maintain pedestrian and worker safety

COMMITTEE DISCUSSION & QUESTIONS

HOW TO STAY INFORMED & OUR NEXT CLC MEETING

KEEPING YOU INFORMED

Communication Methods:

- **Construction Liaison Committee (CLC)**
- Emails to Mailing List
- Weekly E-newsletter
- Construction Notices
- Project Website Updates
- Frequently Asked Questions (FAQ)
- Sharing through elected officials (e-newsletter)
- Metrolinx News Blog
- Wayfinding and Signage

Engagement Tools:

- Virtual Open Houses via Metrolinx Engage
- Working or Advisory Group meetings
- Business Liaison
- Public Meetings (on hold)
- Technical Tours (on hold)
- Pop Ups (on hold)
- Special Events (on hold)



Stay informed: [metrolinx.com/davenport](https://www.metrolinx.com/davenport) & sign up to our Toronto West e-newsletter

Follow us: [@GOExpansion](https://twitter.com/GOExpansion)

Questions or comments: TorontoWest@metrolinx.com or 416-202-6911

Colin Burns, Community Relations and Issues Specialists

NEXT CLC MEETING

- Our next CLC meeting will be held on: Monday, July 25th, 2022, from 5-6 p.m.
- Calendar invites will follow.

THANK YOU & STAY SAFE