

Davenport Diamond Greenway Community Liaison Committee Meeting #4

AGENDA: March 24, 2022

- Welcome and Introductions
 - Land Acknowledgment
- Safety Moment
- Greenway Design Update
 - **Greenway Connections update**
 - **Landscape & Planting**
 - **Community Engagement – upcoming Community Conversation**
- Committee Questions
- How to Stay Informed
- Next Meeting

LAND ACKNOWLEDGEMENT

Let us take a moment to acknowledge that we are on the traditional territory of Indigenous Peoples including the Anishnabeg, the Haudenosaunee and the Wendat peoples.

We are all Treaty people. Many of us have come here as settlers and immigrants...in this generation or generations past.

Metrolinx declares its commitment to building meaningful relationships with Indigenous Peoples.

We acknowledge the historic and continued impacts of colonialization and the need to work towards meaningful reconciliation with the original caretakers of this land.

We acknowledge that Metrolinx operates on lands covered by 20 Treaties, and that we have a responsibility to recognize and value the rights of Indigenous Nations and Peoples and conduct business in a manner that is built on the foundation of trust, respect and collaboration.

SAFETY MOMENT



Public Realm Design

- The Davenport Diamond Public Realm will be created as an integral part of the Grade Separation Project, located in the new open spaces that will be constructed when the Elevated Guideway is completed.
- The Public Realm, called the Greenway, will provide amenities and enhanced connectivity to the communities along the Guideway.
- The Public Realm project includes sustainably designed green spaces, new east-west connections, a new multi-use trail, pedestrian bridges, pedestrian underpasses and enhanced connections to transit.
- The scope of this project is to provide conceptual and preliminary design, detail design and tender documents by summer 2022.

DAVENPORT DIAMOND GREENWAY

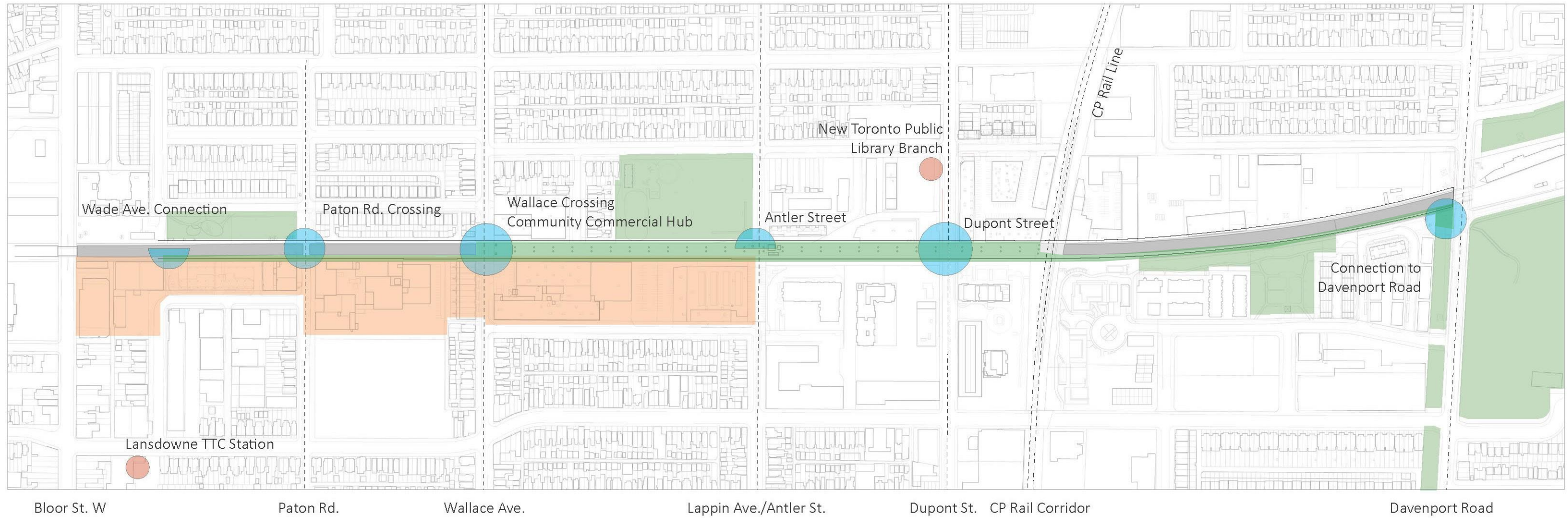


Artist visualization of the preliminary concept design:
Elements illustrated in this rendering may be subject to change during the detailed design phase.

GREENWAY DESIGN UPDATE

DAVENPORT DIAMOND GREENWAY

-  Davenport Diamond Guideway and Greenway
-  Key Greenway Connection Points
-  Employment Areas
-  Parks and Public Ammenities



DAVENPORT DIAMOND GREENWAY



GREENWAY CONNECTIONS UPDATE

Legend:

- 1 Elevated Guideway
- 2 Paton Road Underpass
- 3 Multi-Use Trail
- 4 Signage Beacon
- 5 Pole Lights



Artist visualization of the preliminary concept design:
Elements illustrated in this rendering may be subject to change during the detailed design phase.

VIEW OF PATON ROAD UNDERPASS

Legend:

- 1 Elevated Guideway
- 2 Multi-Use Trail
- 3 Pole Lights



Artist visualization of the preliminary concept design:
Elements illustrated in this rendering may be subject to change during the detailed design phase.

VIEW OF MULTI-USE PATH SOUTH OF WALLACE AVENUE

Legend:

- 1 Elevated Guideway
- 2 Multi-Use Trail
- 3 Market Square
- 4 Beacon



Artist visualization of the preliminary concept design:
Elements illustrated in this rendering may be subject to change during the detailed design phase.

VIEW OF MARKET SQUARE AT WALLACE AVENUE

Legend:

- 1 Elevated Guideway
- 2 Egress Stair
- 3 Multi-Use Trail
- 4 Signage Beacon
- 5 Bench Seating
- 6 Pole Lights
- 7 'Raft' Surfaces
- 8 Vine Screens
- 9 Pathways



Artist visualization of the preliminary concept design:
Elements illustrated in this rendering may be subject to change during the detailed design phase.

VIEW AT CAMPBELL PARK LOOKING NORTH TO ANTLER STREET

Legend:

- 1 Elevated Guideway
- 2 Egress Stair
- 3 Multi-Use Trail
- 4 Signage Beacon
- 5 Pole Lights
- 6 Vine Screens
- 7 Edge of Right-of-Way



Artist visualization of the preliminary concept design:
Elements illustrated in this rendering may be subject to change during the detailed design phase.

SECTION VIEW NORTH OF ANTLER STREET LOOKING SOUTH

Legend:

- 1 Elevated Guideway
- 2 Ramp Connection to Bridge Over CP Rail
- 3 Multi-Use Trail
- 4 Signage Beacon
- 5 Planter / Seating
- 6 Pole Lights
- 7 Bridge Square Over Dupont
- 8 Circular 'Switch' Forms Connected Pathways

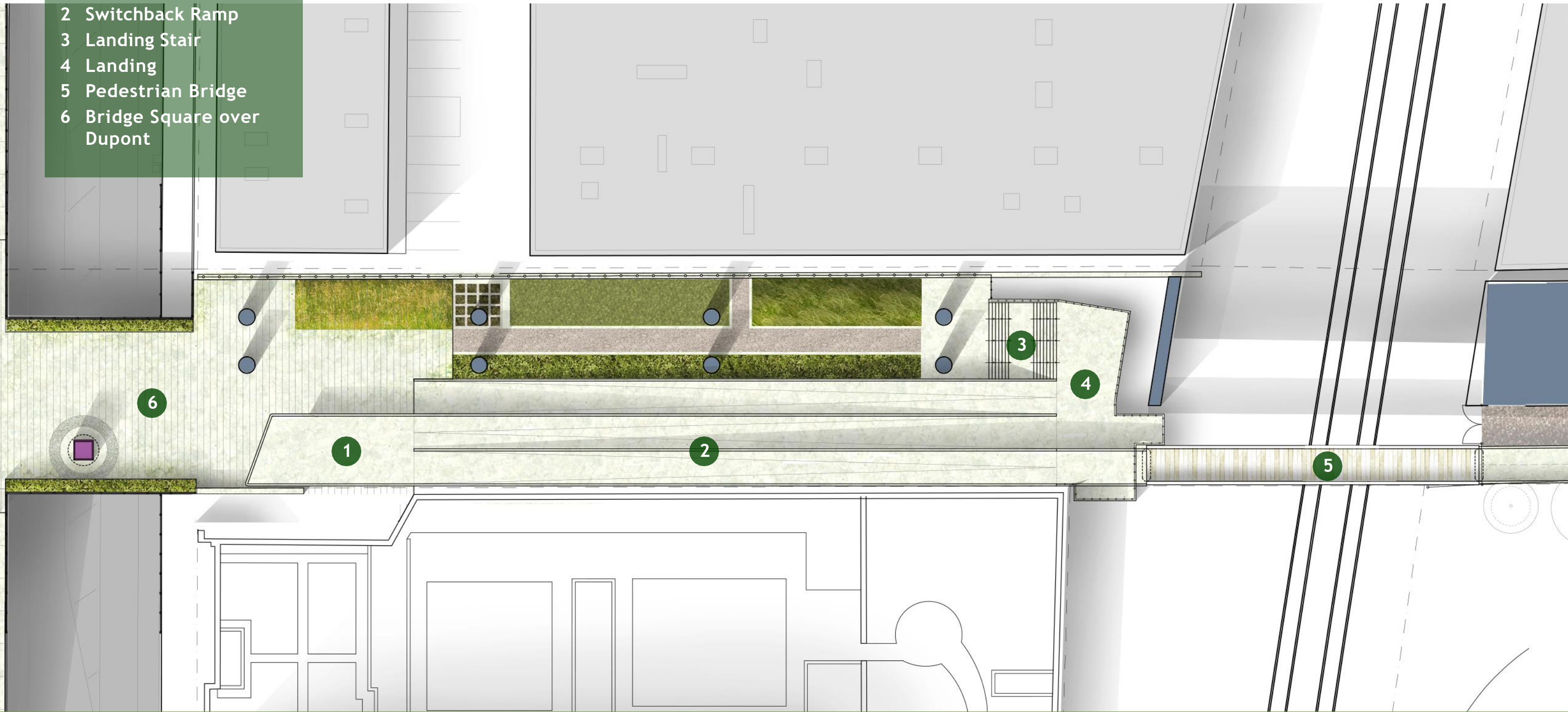


Artist visualization of the preliminary concept design:
Elements illustrated in this rendering may be subject to change during the detailed design phase.

VIEW OF 'BRIDGE SQUARE' AT DUPONT BRIDGE LOOKING NORTH

Legend:

- 1 Ramp Lookout
- 2 Switchback Ramp
- 3 Landing Stair
- 4 Landing
- 5 Pedestrian Bridge
- 6 Bridge Square over Dupont

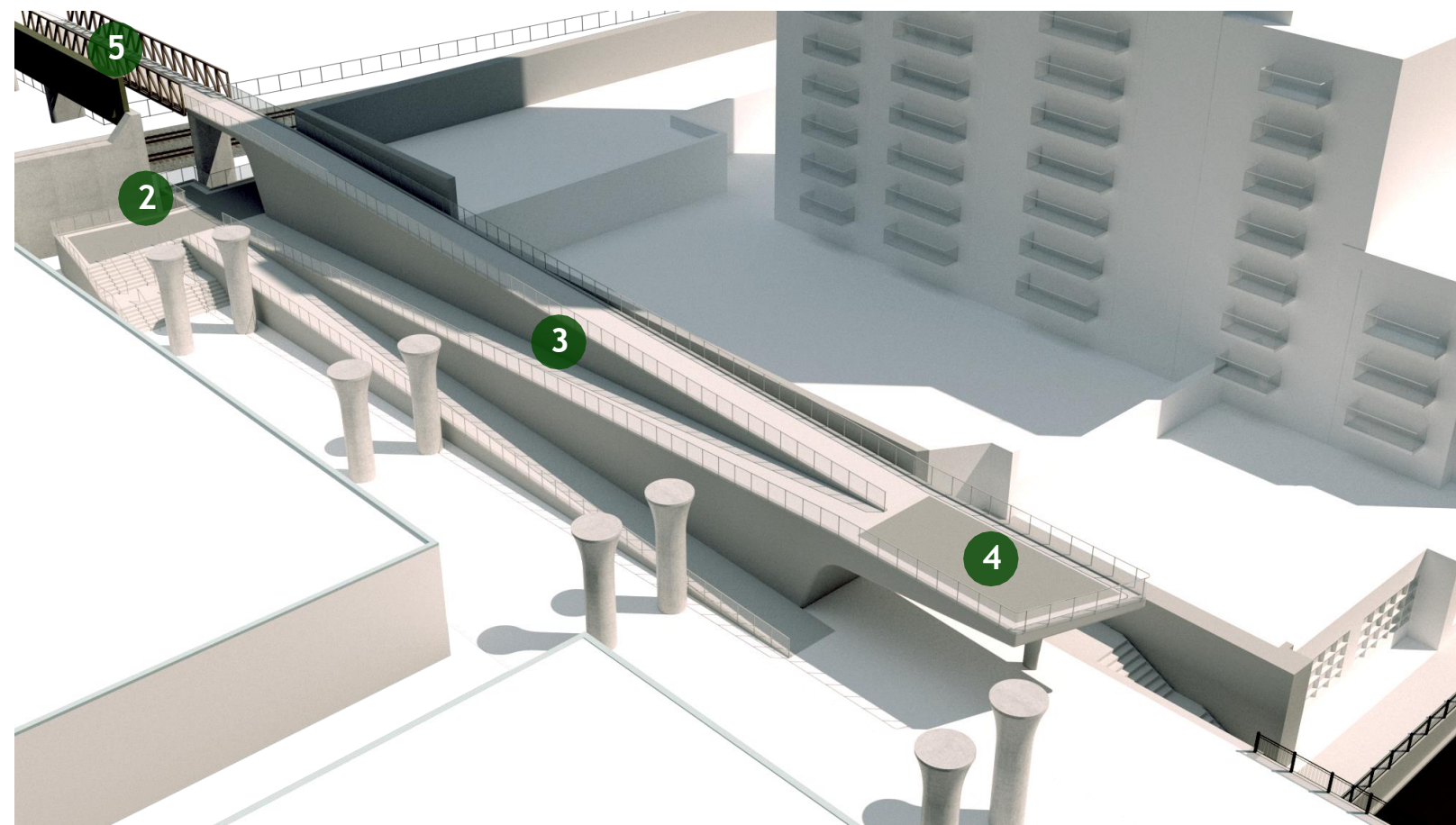


Artist visualization of the preliminary concept design:
Elements illustrated in this rendering may be subject to change during the detailed design phase.

PLAN OF PEDESTRIAN SWITCHBACK RAMP

Legend:

- 1 Elevated Guideway
- 2 Pedestrian Ramp Landing
- 3 Switchback Ramp
- 4 Ramp Lookout
- 5 Pedestrian Bridge



Artist visualization of the preliminary concept design:
Elements illustrated in this rendering may be subject to change during the detailed design phase.

VIEWS OF PEDESTRIAN SWITCHBACK RAMP

Legend:

- 1 CP Rail
- 2 Pedestrian Bridge
- 3 Concrete Pier

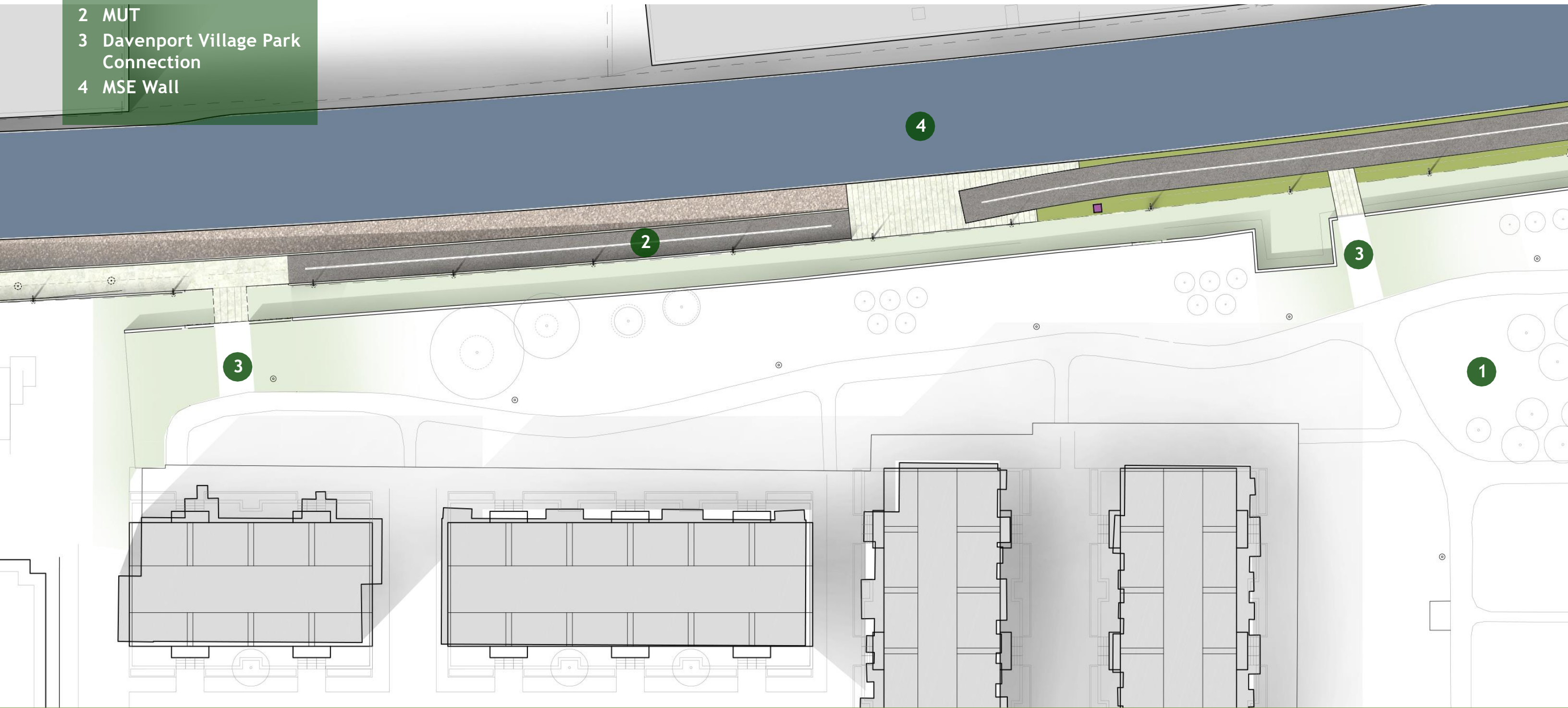


Artist visualization of the preliminary concept design:
Elements illustrated in this rendering may be subject to change during the detailed design phase.

VIEWS OF PEDESTRIAN BRIDGE

Legend:

- 1 Davenport Village Park
- 2 MUT
- 3 Davenport Village Park Connection
- 4 MSE Wall

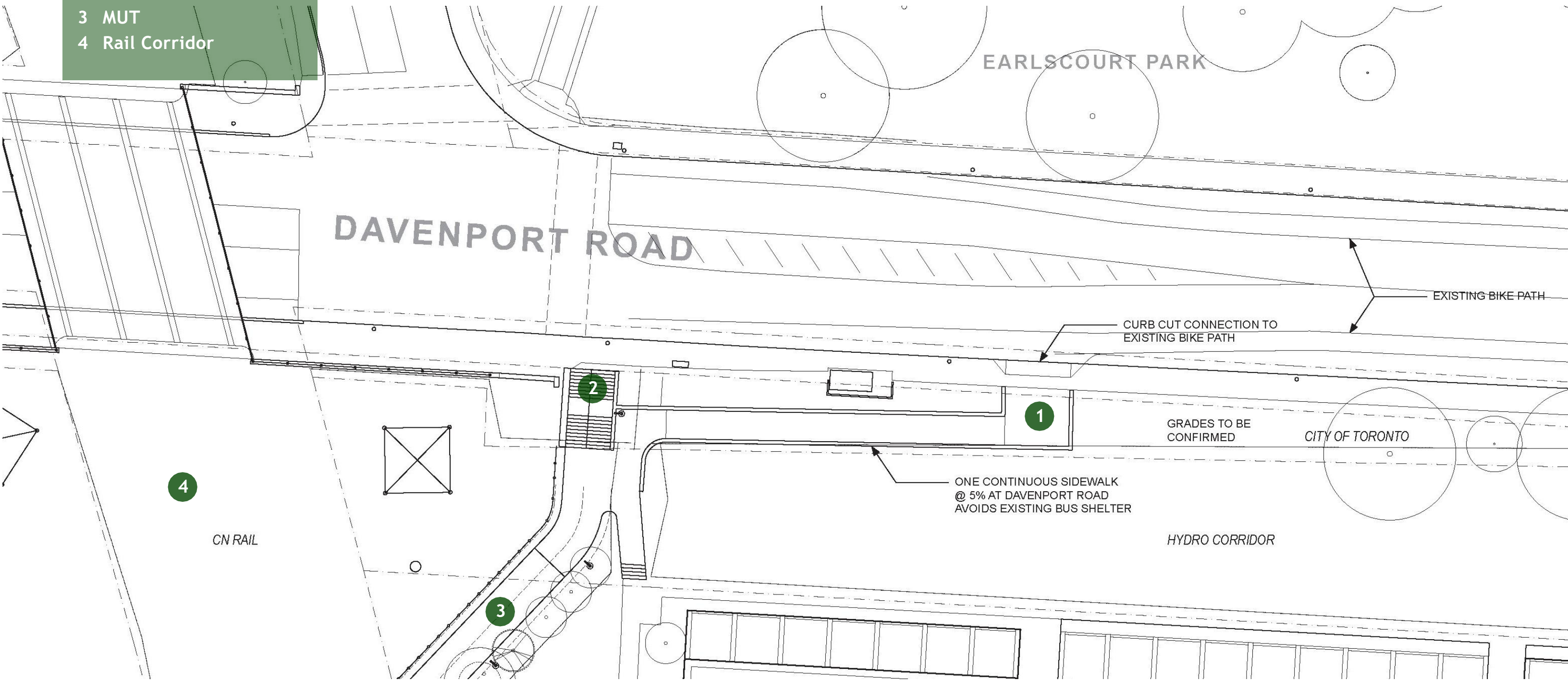


Artist visualization of the preliminary concept design:
Elements illustrated in this rendering may be subject to change during the detailed design phase.

PLAN OF DAVENPORT VILLAGE PARK CONNECTIONS

Legend:

- 1 Pedestrian Ramp
- 2 Stair Connection
- 3 MUT
- 4 Rail Corridor



Artist visualization of the preliminary concept design:
Elements illustrated in this rendering may be subject to change during the detailed design phase.

PLAN OF PEDESTRIAN RAMP AT DAVENPORT ROAD

Legend:

- 1 Davenport Road
- 2 Pedestrian Ramp
- 3 Beacon
- 4 Stair Connection



Artist visualization of the preliminary concept design:
Elements illustrated in this rendering may be subject to change during the detailed design phase.

VIEWS OF PEDESTRIAN RAMP AT DAVENPORT ROAD

DAVENPORT DIAMOND GREENWAY



LANDSCAPE & PLANTING UPDATE

MEADOW

- Open habitat with succession of blooms providing nectar and pollen for beneficial insects. The soil can be wet or dry with the super foods for pollinators of sunflowers, asters and goldenrods. Protected by a mown buffer edge where it meets the trail.



Sunny
Dry or wet
Cut each spring
200-2200 mm tall

goldenrod, grasses, milkweed,
sedges, asters

GLADE

- A low-growing shade-tolerant habitat that will allow accessible views in all directions across the site. The glade is comprised of understory plants that provide nectar and pollen for beneficial insects along with protective cover for small animals.



Shaded

Moist
Self-sustaining
200-900 mm tall

bergamot, bottlebrush, milkweed, wood poppy, wild violets

GLEN

- A swale of varying widths planted with water-filtering shade-tolerant understory plants such as Carex species. These plantings filter runoff and stormwater.



Shaded

Wet
Self sustaining
150-300 mm tall

sedges, snakeroot, spiderwort,
asters, waterleaf, anemones

THICKET

- A screening device comprised of densely planted shrubs, providing deep shade to the soil surface to prevent weed growth. Thickets provide winter structure, fall colour, cover, nesting materials, and food (berries and nuts) for birds. Low growing shrubs such as beaked hazel nut, snowberry and fragrant sumac would be found in the plantings.



Light

Moist
Minimal pruning
450-2000 mm tall

dogwood, fragrant sumac,
ninebark, honeysuckle

GROVE

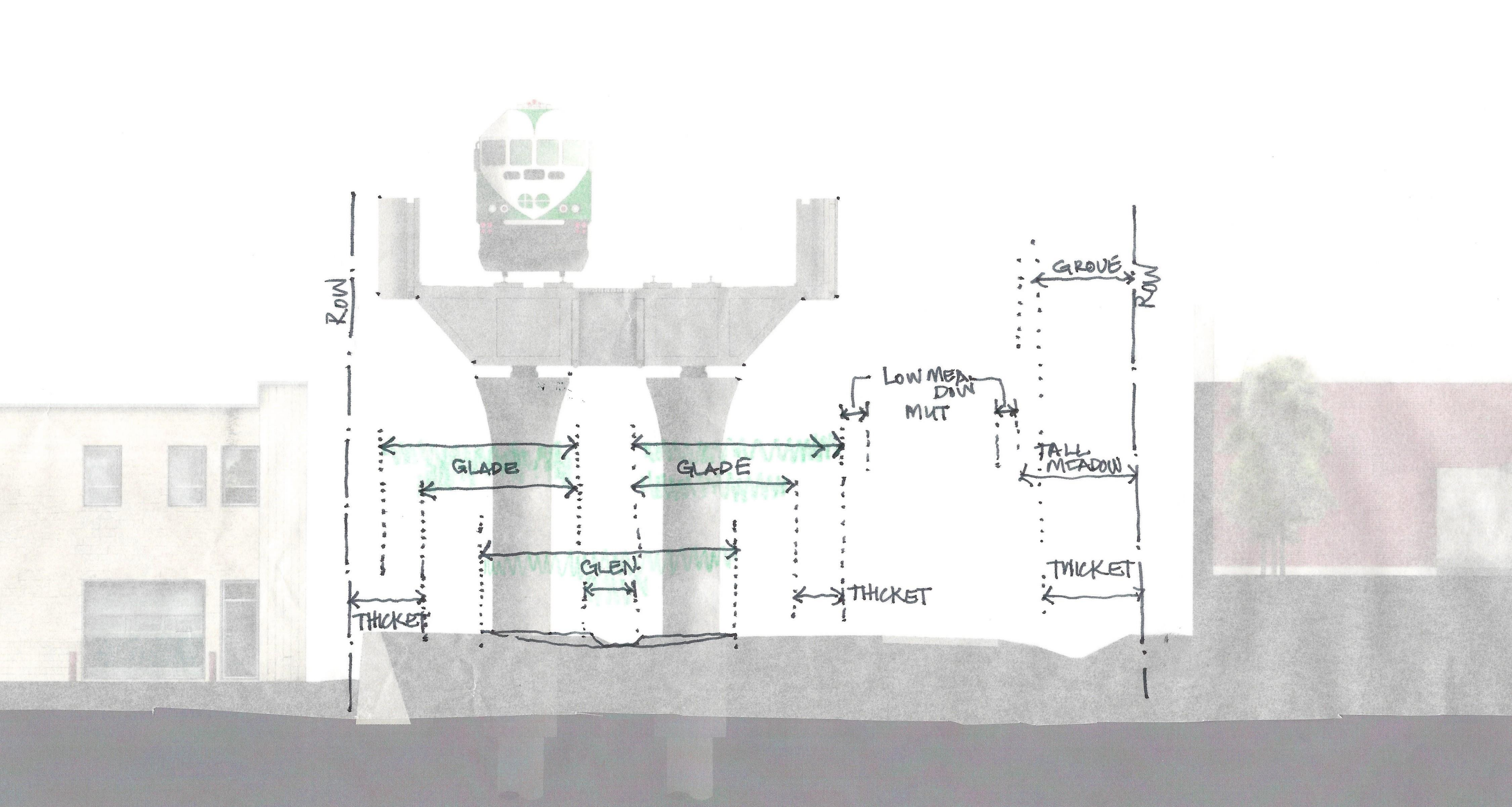
- Closely-planted short, ornamental trees or large shrubs providing shade, fall colour and winter structure, as well as cover and nesting habitat for birds, food for larval butterflies, and nectar and pollen for bees. Groves would be located where space is available and at special locations within the Greenway.



Light

Moist
Prune every 3-5 years
1500-4000 mm tall

redbud, serviceberry, spicebush, sumac, freeman maple



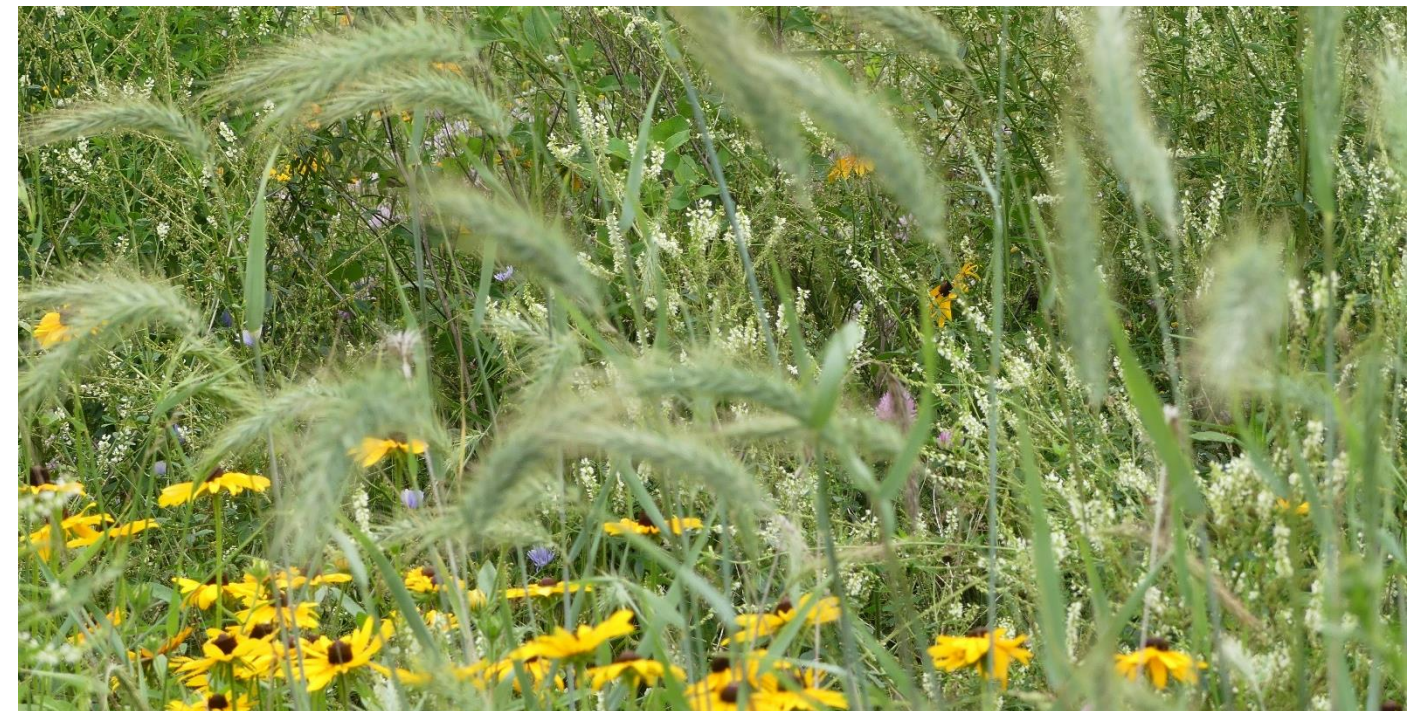
LANDSCAPE & PLANTING TYPES IN SECTION

Establishing a pollinator landscape

Start with the soil
REALLY SANDY SOIL

Total sand (0.05 – 2 mm)	85 - 88%
Fines (Silt/Clay)	08 - 12%
Chemical analysis	pH: 5.5 – 7.5
Nutrient levels (ppm)	
Phosphorous	10 – 30
Potassium	80 – 250
Calcium	< 5000
Magnesium	100 – 300
Soluble salt (TDS)	< 500
Percent organic matter	3 – 5%
CEC	> 10 meq/100g
Infiltration/Permeability/Hydraulic Conductivity	50 –75 mm/hr at 85% Proctor density

Seed a nurse crop
Canada Wild Rye (*Elymus canadensis*),
Virginia Wild Rye (*Elymus virginicus*),
Annual Oats (*Avena sativa*),
Buckwheat (*Fagopyrum esculentum*),
Barley (*Hordeum vulgare*),
White Millet (*Panicum miliaceum*)
Cosmos (*Cosmos bipinnatus*)



COMMUNITY CONVERSATION -
ESTABLISHING A POLLINATOR LANDSCAPE



- Over seed the nurse crop with a native seed mix that matches the growing conditions at the best time for germination
- Three seed mixes:
 - Glade areas – woodland native seed mix
 - Glen areas – wetland native seed mix
 - Meadow areas – early succession dry prairie meadow and in the wetter areas the wetland native seed mix
- Add some seedlings at key areas in front garden scaled planting beds into the seeded areas
- Blocks of a single species that have special characteristics
- This will provide some early colour and add order to the overall landscape.

COMMUNITY CONVERSATION -
ESTABLISHING A POLLINATOR LANDSCAPE

Davenport Diamond Greenway Design Schedule

Stage 1	Preliminary Design	25%	April – September 2021
Stage 2	Detail Design	50/75% 95% 100%	September 2021 – March 2022 April 2022 – June 2022 May 2022 – August 2022
Stage 3	Tender		Winter 2022/23
Stage 4	Construction		Summer / Fall 2023

Community Engagement: Next Steps

1. Ongoing CLC meetings and Project Website updates
2. Community Conversation #1 Plants and Pollinators: April 28, 2022
metrolinxengage.com/DavenportGreenway
3. Metrolinx Live Event and Virtual Open House: May 19, 2022
metrolinxengage.com/DavenportGreenway

COMMITTEE QUESTIONS



KEEPING YOU INFORMED

Communication Methods:

- Community Liaison Committee (CLC)
- Emails to Mailing List
- Project Website Updates
- Sharing through elected officials (e-newsletter)
- Metrolinx News Blog

Engagement Tools:

- Metrolinx Live Events
- Pop Ups
- Special Events



Stay informed: [metrolinx.com/davenport](https://www.metrolinx.com/davenport) & sign up to our Toronto West e-newsletter

Follow us: [@GOExpansion](https://twitter.com/GOExpansion)

Questions or comments: TorontoWest@metrolinx.com or 416.202.6911

NEXT CLC MEETING

- Next CLC meeting will be held following the next design update in May or June
- Calendar invites will follow
- Meeting day is Thursday and time is 4-5 p.m.