

# **Finch West LRT Project Construction Liaison Committee (CLC)**

Tuesday, May 3, 2022



# AGENDA

- **Welcome and Introductions**
- **Safety Moment**
- **Land Acknowledgement**
- **Review of Minutes and Action Items**
- **Major Milestones**
- **Work Update**
  - Finch West Station
  - Utilities and Roadwork
  - Maintenance and Storage Facility
  - Hwy 400 Bridge
  - Humber College Stop
- **Roundtable discussion**
- **Communications and Community Engagement**



**Safety Moment**

# **Land Acknowledgement**

# METROLINX LAND ACKNOWLEDGEMENT

Metrolinx acknowledges that it operates on the traditional territory of Indigenous Peoples including the Anishnabeg, the Haudenosaunee and the Wendat peoples.

In particular, we acknowledge that the Finch West LRT is occurring on lands covered by Treaty 13, 1805 with the Mississaugas of the Credit First Nation and the Fort Albany/Nanfan Treaty of 1701 signed with the Haudenosaunee.

Metrolinx is committed to building meaningful relationships with Indigenous Peoples, and to working towards meaningful reconciliation with the original caretakers of this land.

# **Review of Previous April 5, 2022 CLC Minutes and Action Items**



# REVIEW OF PREVIOUS CLC MEETING

- No action items



# **Important Milestones**



# IMPORTANT MILESTONES

- Roof slab concrete pour at Finch Avenue and Keele Street intersection



*Photo: Aerial view of Finch Avenue West and Keele Street*

- Start of sidewalks placement at Finch Avenue West between Romfield Lane and Sentinel Road



*Photo: North side of Finch Avenue West between Romfield Lane and Sentinel Road.*

# **Finch West Station Update**



# CURRENT WORKS

## Finch West Station, Finch Avenue West at Keele Street

- Isolation, formworks, rebar placing, and platform slab works for the main box, main entrance box, and portal is ongoing till the end of summer 2022
- Roof slab construction completed at Keele intersection

*Photo: Keele and Finch station and portals.*



# TRAFFIC PLAN @ FINCH AVENUE WEST AND KEELE STREET

- Intermittent traffic stage is scheduled to be implemented at the end of April 2022-for one month, approximately
- Next traffic plan with more southbound and northbound lanes open will be implemented afterwards
- Paid Duty Officer, flaggers, and detour signs to direct traffic, if needed
- Community members will be notified of any significant construction related impacts, separately



Maps: Upcoming traffic staging at the intersection of Finch Avenue West and Keele Street.



Maps: Current traffic staging at the intersection of Finch Avenue West and Keele Street.

# **Keele Street to Norfinch Drive Corridor Work**



# CURRENT AND UPCOMING WORKS ACROSS FINCH AVENUE WEST

## From Keele Street to Jane Street

- From Romfield Drive to Sentinel Road north sidewalk is almost ongoing and completed in some areas
- Duct bank work on Sentinel completed, next step is track slab installation
- Road widening between Tobermory Drive and Driftwood Avenue is completed
- Eastbound Tobermory stop platform is installed. Westbound one is nearly finished
- West and Eastbound Driftwood stop platform are completed
- Landscaping is ongoing on different locations
- Jane stop platforms are completed

*Photo: Aerial view of the intersection of Finch Avenue West and Driftwood Avenue*





# GUIDEWAY INSTALLATION ON FINCH AVENUE WEST AND SENTINEL ROAD

- Traffic staging implemented as shown to continue intersection guideway work and stop platforms
- The work started at the beginning of April 2022, and will last for four (4) months, approximately
- Guideway works will be done in two stages, starting with the east side of the intersection.
- Sidewalks and crosswalks may be closed periodically
- Minor field modifications will occur when needed to complete work safely and minimize impact on the public



*Map: Traffic staging at the intersection of Finch Avenue West and Sentinel Road*

# **Maintenance and Storage Facility**

# ONGOING ACTIVITIES

## In Progress:

- LRT equipment and Systems installation continues
- Final Landscaping is almost completed
- Train commissioning on the mainline is ongoing

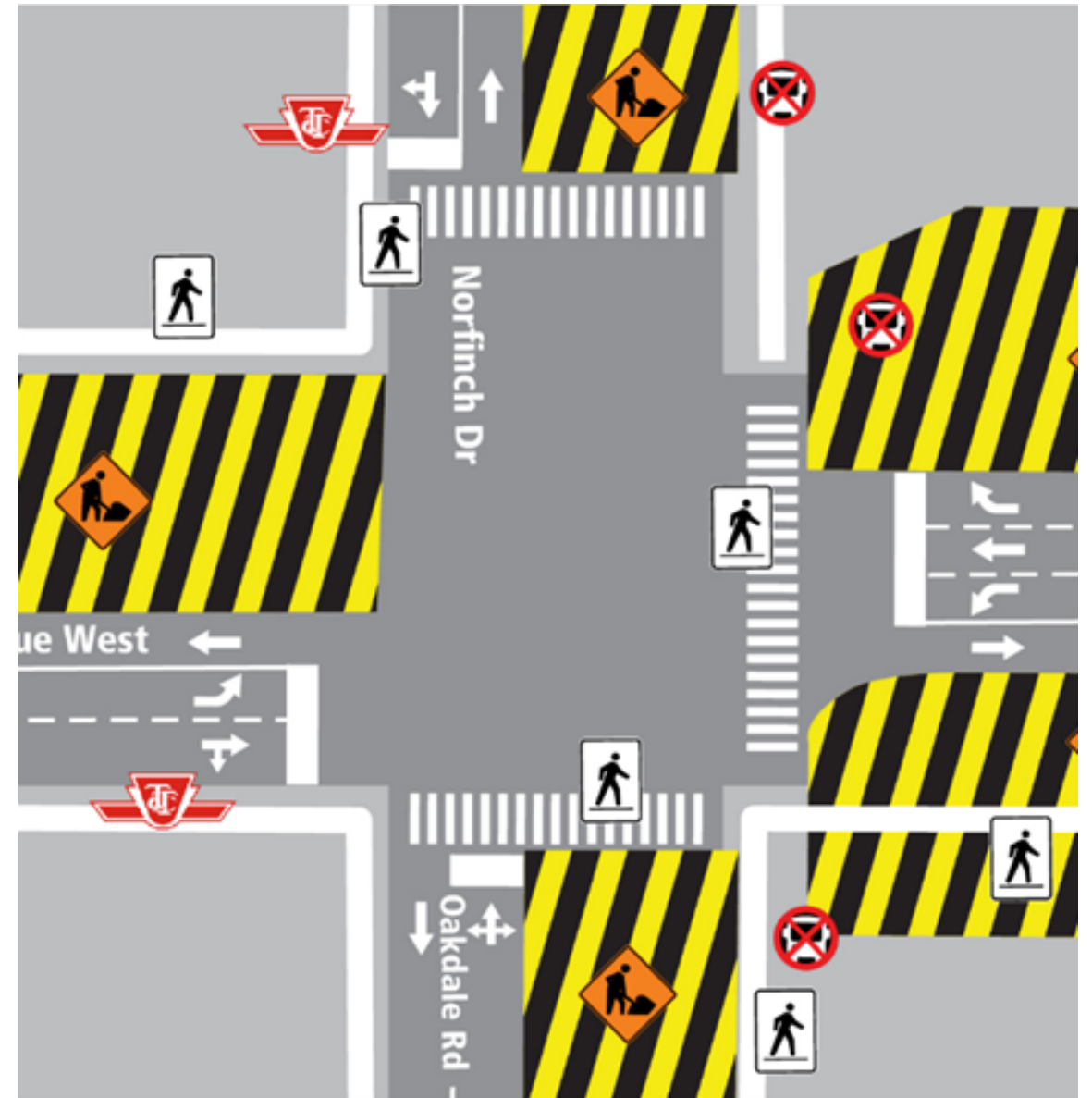
*Photo: Aerial view of the Maintenance and Storage Facility*



**Norfinch Drive to Weston Road**

# ROAD AND UTILITY WORKS ON NORFINCH DRIVE/OAKDALE ROAD.

- Current traffic staging at the intersection of Finch Avenue West and Norfinch Drive/Oakdale Road will continue till summer 2022 with minor field modifications for wet and dry utility relocations
- After this stage, the traffic will be spited for guideway works at the intersection summer 2022
- Sidewalks and crosswalks may be closed periodically. Minor field modifications will occur when needed to complete work safely and minimize impact on the public

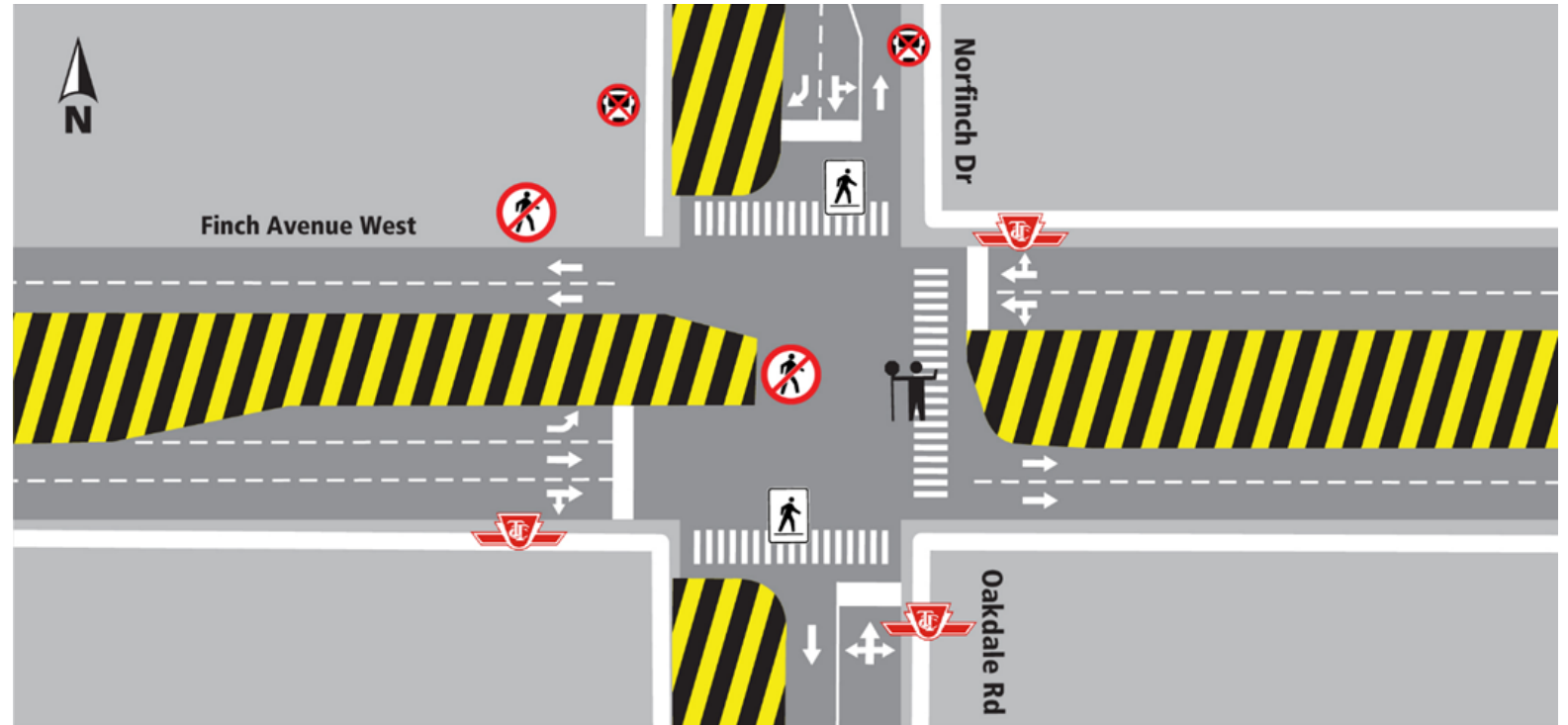


Map: Traffic staging at the intersection of Finch Avenue West and Norfinch Drive.



# GUIDEWAY INSTALLATION ON FINCH AVENUE WEST AND NORFINCH DRIVE.

- Guideway installation work will start in the summer of 2022 (east or west side)
- The work also includes the installation of permanent traffic signals, at grade stops and final paving
- Bus stops will be relocated, if necessary
- There will be a Paid Duty Officer, flaggers, and detour signs to direct traffic, as needed



*Intersection of Finch Avenue West and Norfinch Drive.*



# CURRENT AND UPCOMING WORKS

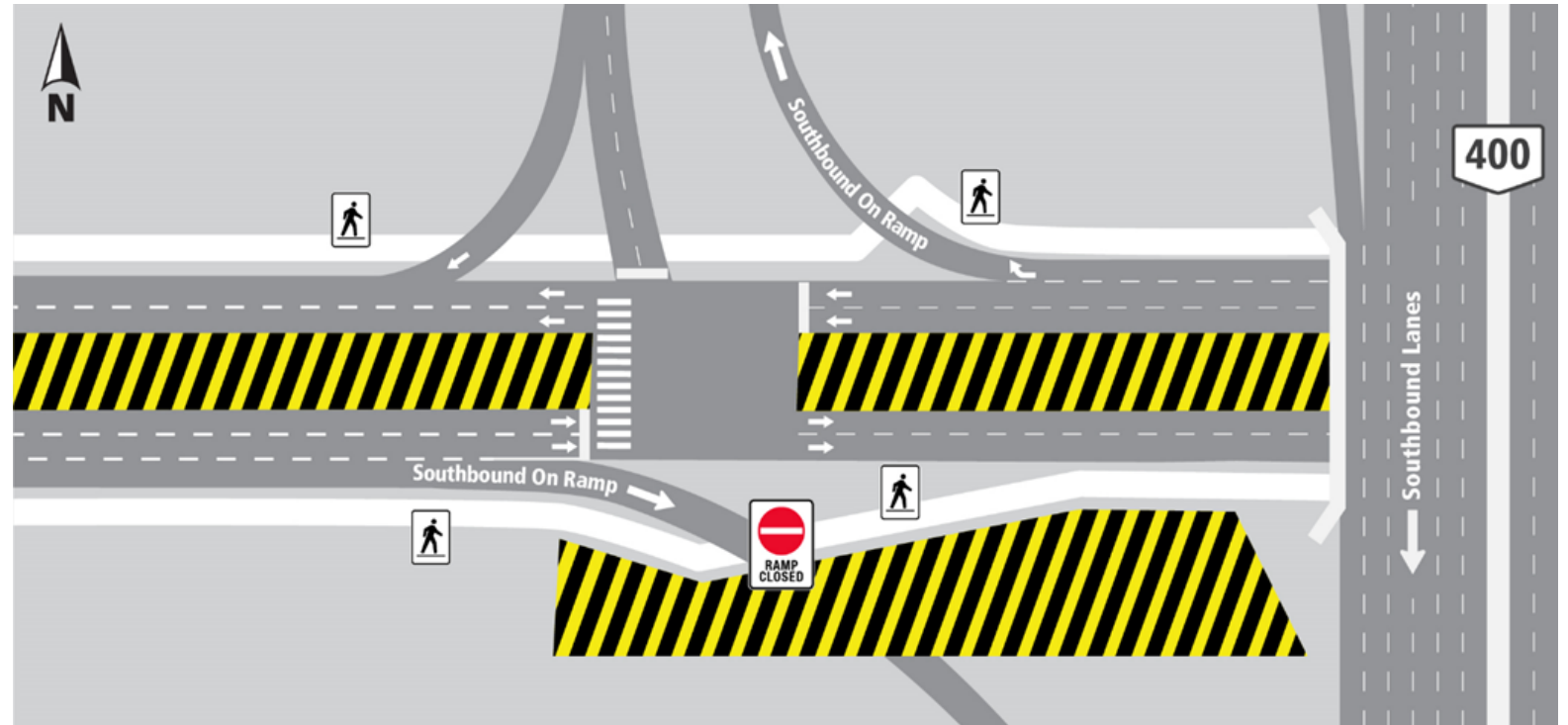
- Road and guideway work is underway
- Wet utilities installation is ongoing
- Multi Use Path (MUP) tunnel work has been resumed with pump station equipment delivery
- The construction work will continue until late summer
- Periodic ramp closures are probable
- Occasional night work occurs from 6 pm to 7 am. Additional notices will be provided as needed



*Map: Aerial view of HWY 400.*

# MULTIUSE PATH TUNNEL INSTALLATION ON FINCH AVENUE WEST AND HIGHWAY 400.

- Multiuse path tunnel installation
- The work will start in early May for about two weeks. The work will be done overnight
- There will be a Paid Duty Officer, flaggers, and detour signs to direct traffic, as needed



*Intersection of Finch Avenue West and Norfinch Drive.*

# FOUR STAGES OF TRAFFIC CONFIGURATION, SIGNET DRIVE/ARROW ROAD



# **Weston Road to Highway 27**

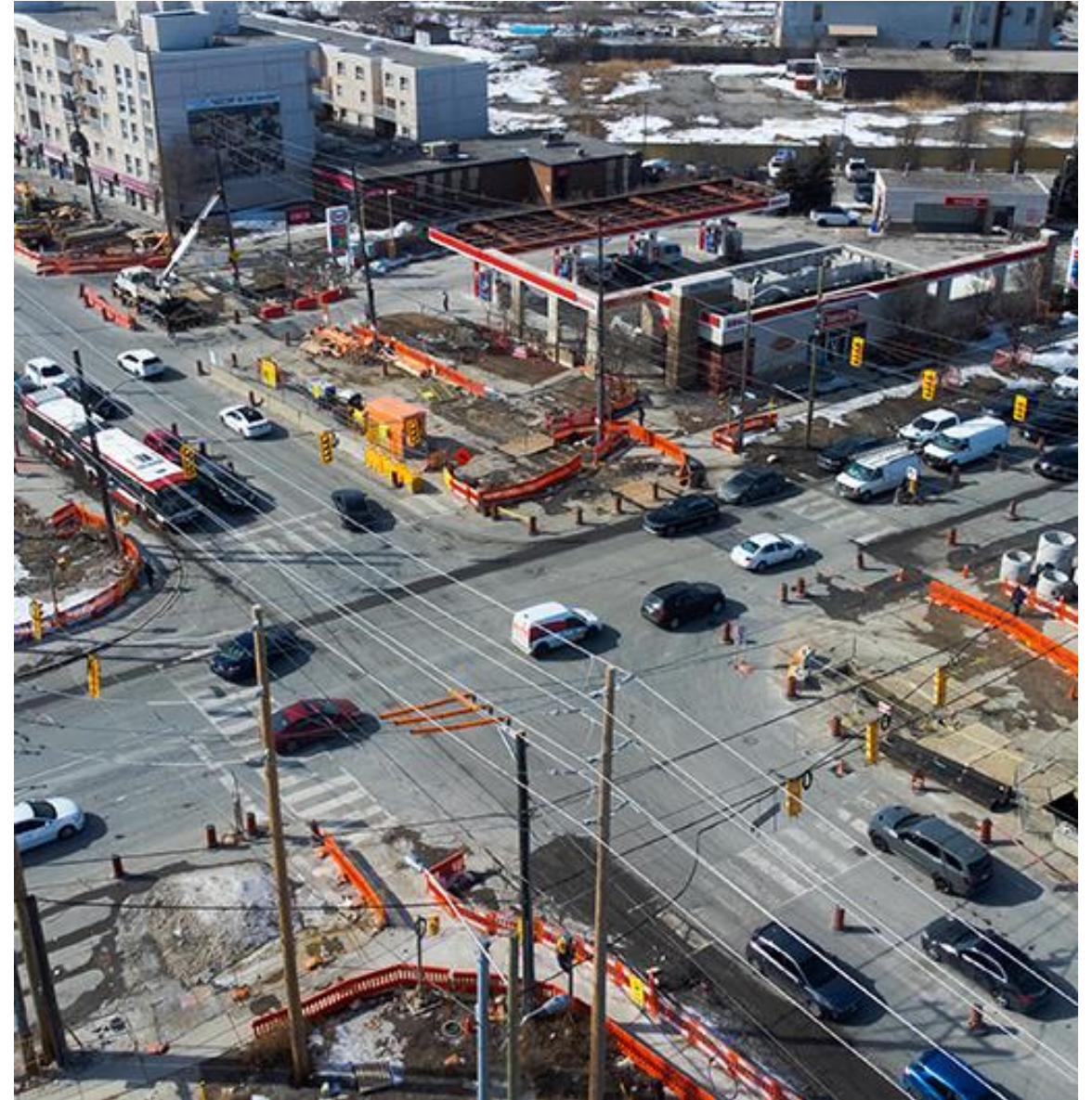


# WESTON ROAD AND FINCH AVENUE WEST INTERSECTION

## Ongoing and Upcoming Works

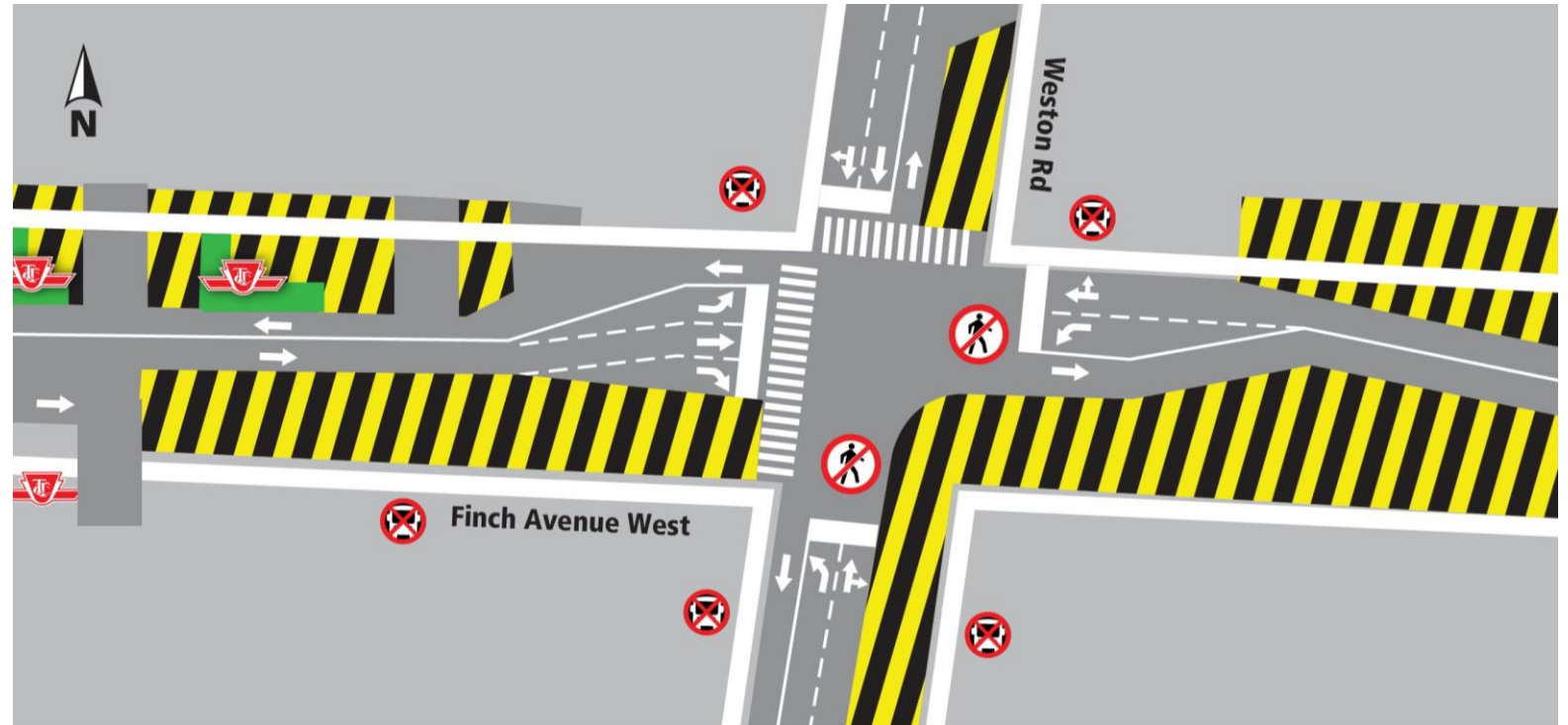
- Underground excavation continues till Summer 2022
- Wet and dry utility relocation continues in this intersection on all quadrants and in the middle
- Next stage for utility works in the middle and retaining wall is scheduled to implement later in summer 2022
- Overhead and underground electrical work started in April for six months, approximately

*Photo: Intersection of Finch Avenue West and Weston Road looking north-west*



# ROADWORKS AND RETAINING WALL INSTALLATION AT WESTON ROAD.

- Retaining wall installation will start in late Summer 2022 until late fall 2022
- Bus stops will be relocated, if necessary
- There will be a Paid Duty Officer, flaggers, and detour signs to direct traffic, as needed



*Intersection of Finch Avenue West and Weston Road.*



# WET UTILITIES INSTALLATION ON FINCH AVENUE WEST AND MILVAN DRIVE.

- Milvan closure at Finch Avenue is scheduled to start on mid May, for two weeks, approximately
- Minor field modifications may occur when needed to complete work safely and minimize impact on the public
- There will be a Paid Duty Officer, flaggers, and detour signs to direct traffic, as needed



*Intersection of Finch Avenue West and Rumike Road.*

# WET AND DRY UTILITIES WORK FROM MILVAN DRIVE TO ISLINGTON AVENUE

- Overhead and underground electrical work from Pearldale Avenue to Weston Road started in March 2022 and will continue till early fall, approximately
- Finchdale plaza retaining wall is completed. TPSS 4 is scheduled to be installed on May 10, 2022
- Wet and dry utilities work between Islington Avenue and Milady Road continues
- Hydro work will be finished in late Spring, and wet utility relocations is scheduled to be finished in mid-summer 2022, approximately



*Photo: Intersection of Finch Avenue West and Milady Road .*



# HUMBER RIVER BRIDGE REHABILITATION - FINCH AND ISLINGTON AVENUE INTERSECTION

- Ongoing since early April 2021 for 18 months, approximately. Quadrants 1 & 2 are complete
- Work continues in the north - east quadrant (3) and late May/early June our construction teams will be mobilized to zone 4 for the final stage of bridge rehabilitation.

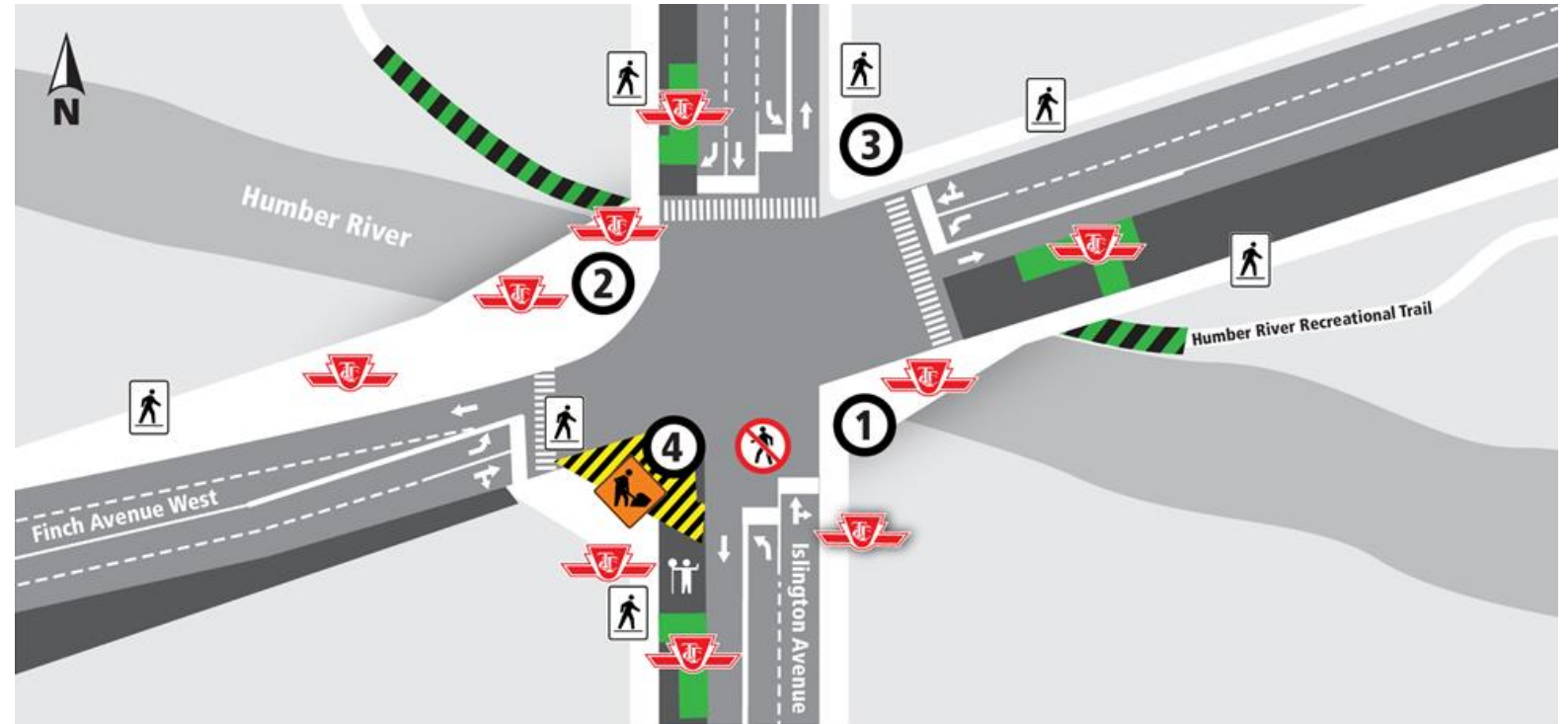


Photo: Aerial view Finch Avenue West and Islington Avenue.



# HUMBER RIVER BRIDGE REHABILITATION AND OTHER ACTIVITIES

- This traffic configuration will be implemented at the end of May until Summer 2022
- Islington eastbound and westbound stop platforms installation is ongoing
- Bus stops will be relocated, if necessary
- There will be a Paid Duty Officer, flaggers, and detour signs to direct traffic, as needed



*Map: Traffic Staging for the intersection of Finch Avenue West and Islington Avenue.*



# CURRENT AND UPCOMING WORKS

## Albion Road and Finch Avenue West

- Wet utility installation continues until summer 2022, approximately.
- Road widening and guideway installation on Finch Avenue West between Albion Road and Martin Grove Road started at the end of April 2022 and guideway works will be started in the coming month in these locations
- Retaining wall installation near Albion Mall is almost finished.
- Community members will be notified of any significant construction related impacts, separately.

*Photo: Intersection of Finch Avenue West and Albion Road.*



# GUIDEWAY WORKS ON FINCH AVENUE WEST BETWEEN ALBION ROAD AND MARTIN GROVE ROAD.

- Road widening started in April 2022
- The work at the intersection is planned for late summer and it includes:
  - ✓ Guideway installation.
  - ✓ Installation of permanent traffic signals
  - ✓ At grade stops platforms installation
- Bus stops will be relocated, if necessary.
- There will be a Paid Duty Officer, flaggers, and detour signs to direct traffic, as needed.



*Map: Finch Avenue West between Kipling Avenue and Albion Road.*

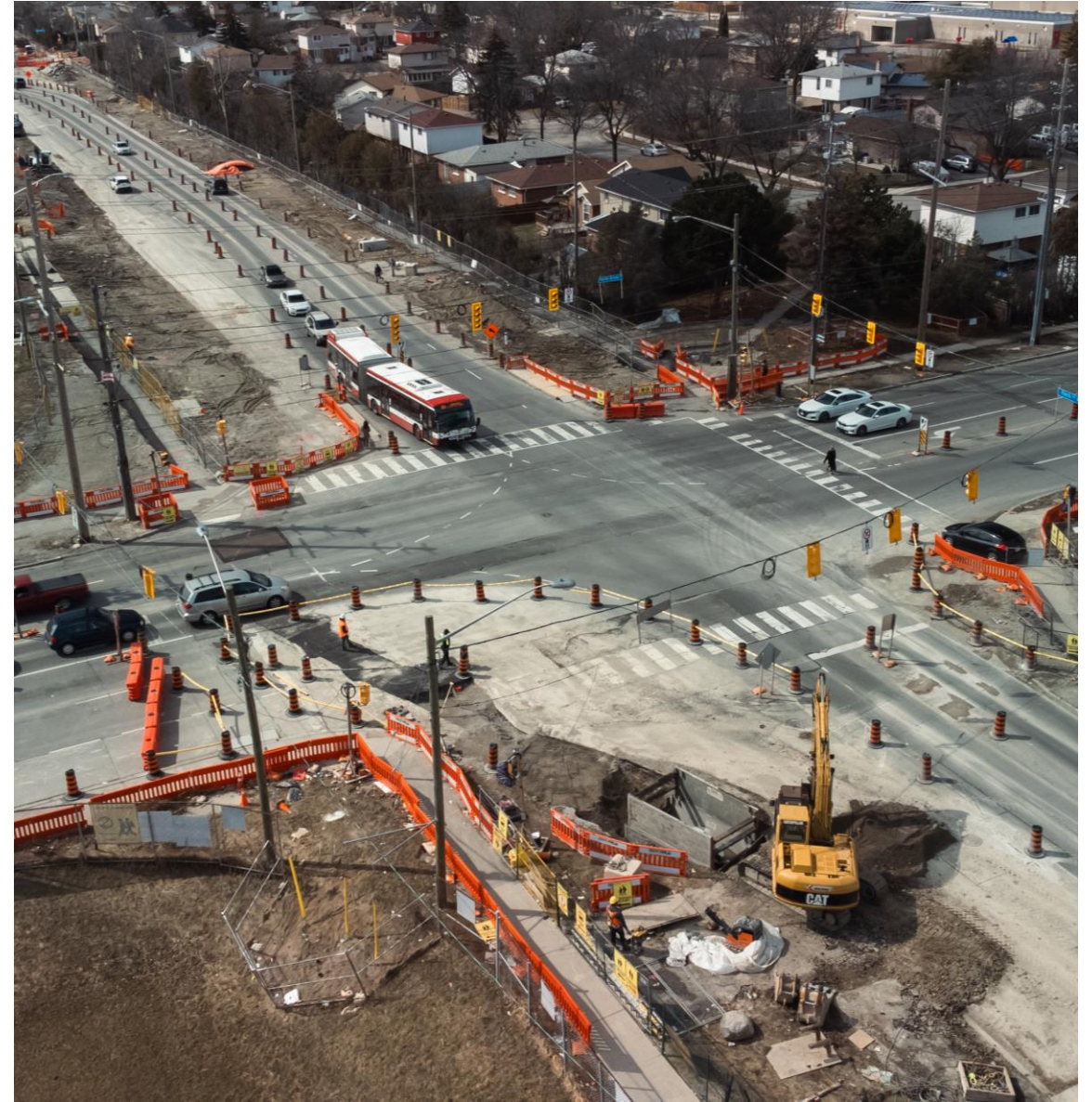


# CURRENT AND UPCOMING WORKS

## Silverstone Drive to Martin Grove Road

- The road widening and guideway work is ongoing
- Track slab pours are complete in most of the location west of Martin Grove Road
- Final paving between Martin Grove Road and Silverstone Drive is scheduled to start late Summer 2022
- Overhead and Underground Electrical Work from Damascus Drive to Martin Grove Road started in March and will continue until mid 2022, approximately
- Community members will be notified of any significant construction related impacts, separately

*Photo: Aerial view of the intersection of Martin Grove Road and Finch Avenue West.*





# CURRENT AND UPCOMING WORKS

- Damascus Drive is reopened on schedule
- Overhead and Underground Electrical Work from Highway 27 to Damascus Drive starts in April 2022 for six months, approximately
- West of Silverstone, excavation and track slab work is ongoing for guideway installation
- After the work is done, rail installation from Silverstone Drive to Highway 27 will occur
- Community members will be notified of any significant construction related impacts, separately

*Map: Aerial view of Finch Avenue West and Silverstone Drive.*



# **Humber College Stop and Highway 27**



# COMPLETED AND UPCOMING WORKS

## Finch Avenue West and Highway 27

- Construction of track drainage and excavations is completed
- Concrete pours and steel structural works for the station building in ongoing
- Community members will be notified of any significant construction related impacts, separately

*Photo: Aerial view of Highway 27 and Finch Avenue West, looking south.*





# CURRENT WORKS

## Future Humber College Stop and Portal

- New areas are handed over to track team for track slab and rail installation. The track work is scheduled to start mid summer 2022
- More lanes will be opened in HWY 27 between Humber College Boulevard and Finch Avenue West after asphalt repairs shortly in the first week of May 2022
- Community members will be notified of any significant construction related impacts, separately

*Photo: Highway 27 and Humber College Blvd looking west*



# **Roundtable Discussion**

# **Communications and Community Engagement**

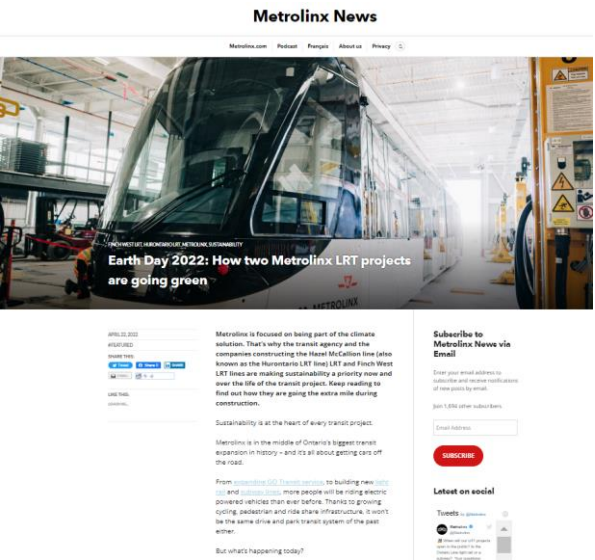
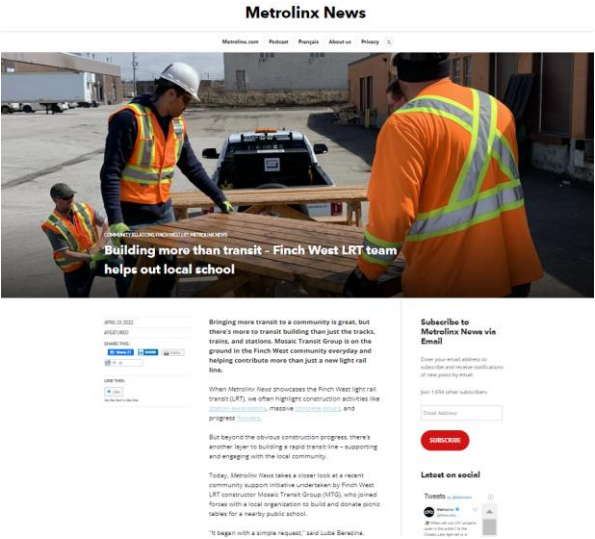
# COMMUNICATION AND COMMUNITY ENGAGEMENT

## Updates

- Finch West and Humber College Station excavation
- FWLRT soil story
- Partnership with Tradelinx for picnic tables
- Finch West station concrete pour

## Upcoming

- Highway 400 Multiuse path tunnel
- PAT internship program implementation
- Monthly alignment video flyover
- Construction site tour with TCBN
- Story on at-grade stops



YORKGATE MALL  
1 YORKGATE RD, NORTH YORK

SOCIAL MEDIA FILES

INSTAGRAM

**IT'S ALL ABOUT Mom!**

**SATURDAY, MAY 7 • 12-4 PM**

Join us for Family Fun Featuring:

- Pop up Vendor Market
- Caricature Artist
- Bouncing Balloon Artist
- Sassy Bags & Pies!

Take a Photo Card Craft for Kids from 1-3pm

**DISCOVERMORE**

WEBSITE BANNER

**IT'S ALL ABOUT Mom!**

**SATURDAY, MAY 7 • 12-4 PM**

Join us for Family Fun Featuring:

- Pop up Vendor Market
- Bouncing Balloon Artist
- Caricature Artist
- Sassy Bags & Pies!

Take a Photo Card Craft for Kids from 1-3pm

**DISCOVERMORE**

PLEASE CHECK THE PRICES CAREFULLY FOR ERRORS AND OMISSIONS. YOUR APPROVAL, CONFIRMED ACCEPTANCE OF FULL RESPONSIBILITY FOR ALL ERRORS, OMISSIONS AND CLAIM, AND TRAVEL CONFIRMED BY THE CUSTOMER. DISCOUNT WAS NOT ACCEPTED. USE OF THIS DISCOUNT IS VALID AT THE TIME OF PURCHASE. ANY CHANGES FROM THE PREVIOUSLY ESTIMATED COST WILL BE CHARGED TO THE CUSTOMER. ACCORDING TO THE TERMS AND CONDITIONS.

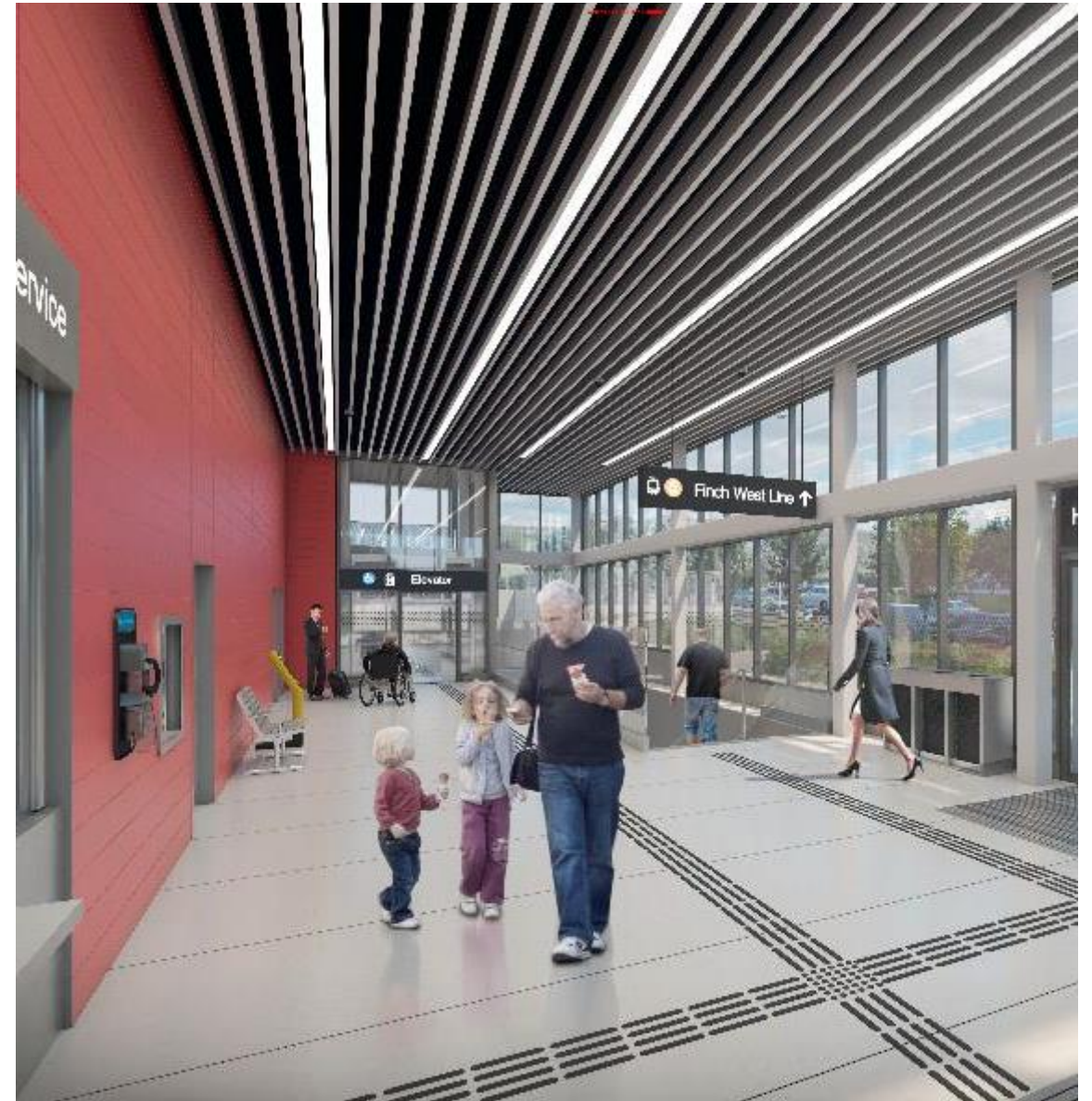
ALWAYS OUT FRONT\*

Check out our Advertising Solutions at [www.ourDDB.com](http://www.ourDDB.com)



# NEXT CLC MEETING

Next meeting will be on June 7, 2022, via Microsoft Teams.



**Thank you and Stay Safe**

