



Capital Projects Update: Improving Project Delivery from Start to Finish

May 15, 2019

Matt Clark, Chief Capital Officer
Capital Projects Group

CAPITAL PROJECTS GROUP VISION

Serving customers and communities by delivering infrastructure projects

Safely,

On Time,

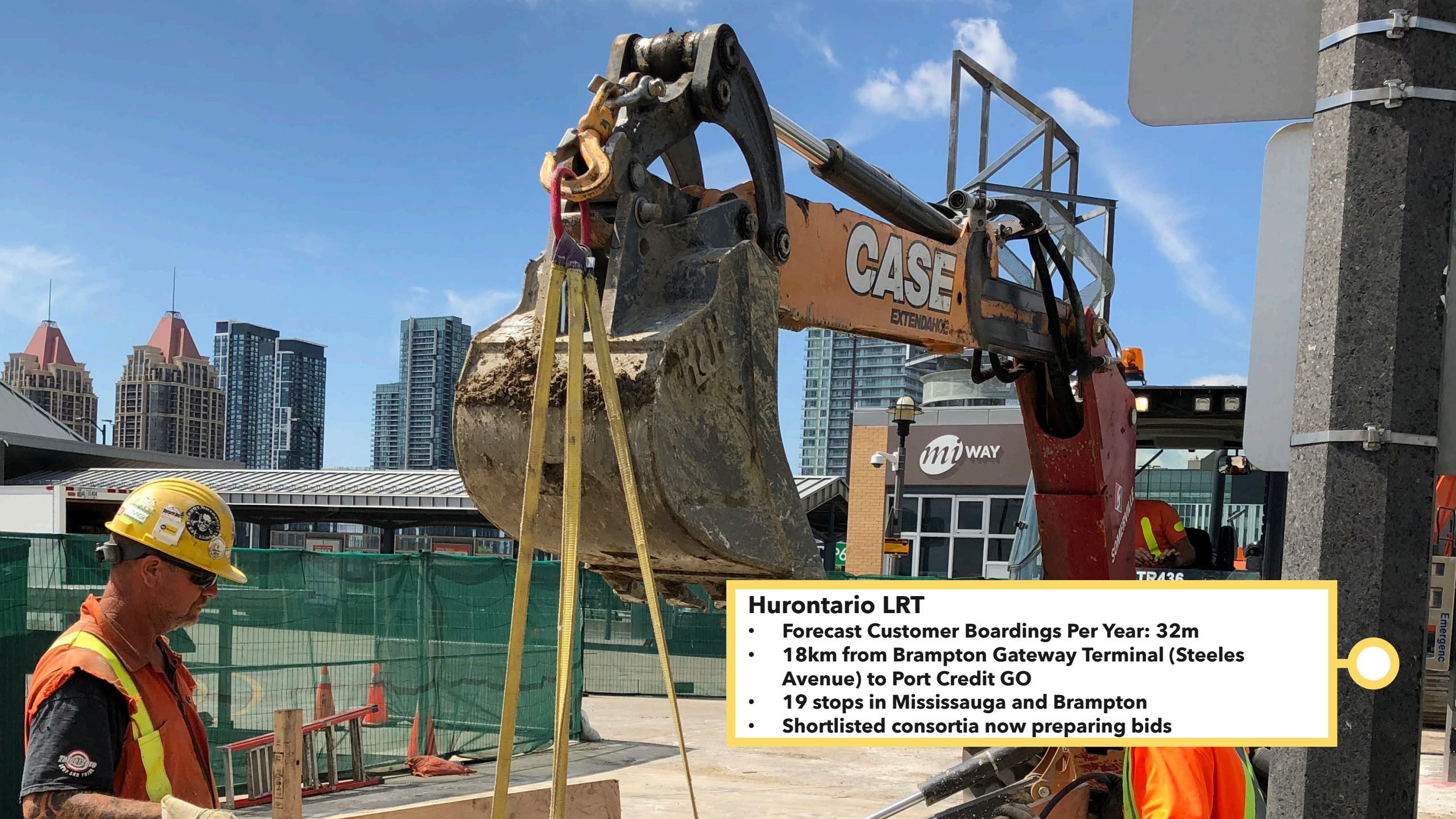
On Budget, and

On Benefit



Hamilton LRT

- Forecast Customer Boardings Per Year: 12.4m
- 14km from McMaster University to Eastgate Square
- 17 stops
- Shortlisted consortia now preparing bids



Hurontario LRT

- Forecast Customer Boardings Per Year: 32m
- 18km from Brampton Gateway Terminal (Steeles Avenue) to Port Credit GO
- 19 stops in Mississauga and Brampton
- Shortlisted consortia now preparing bids



Finch West LRT

- Completion 2023
- Forecast Customer Boardings Per Year: 12m
- 11 km from Finch W. subway station to Humber College
- Contract awarded to Mosaic Transit Group in 2018



Kipling GO Station

- **Completion 2020**
- **Current GO Rail Customer Boardings Per Year: 178,000**
- **Large new bus terminal for existing MiWay and future GO bus service**
- **Project includes upgraded connection to TTC subway, new pedestrian bridge to GO platforms and renovated GO station building**



Cooksville GO Station

- **Completion 2020**
- **Current Customer Boardings Per Year: 499,000**
- **New station building, new pedestrian bridge to the rail platform, new bus loop, upgraded rail platform, 800 new parking spots**



Hwy 401 / 409 Tunnel

- Completion 2021
- Constructing a second tunnel under 21 lanes of Highways 401 and 409
- Accommodates two additional tracks for Kitchener corridor
- Using innovative sequential excavation method (SEM) tunnelling technique



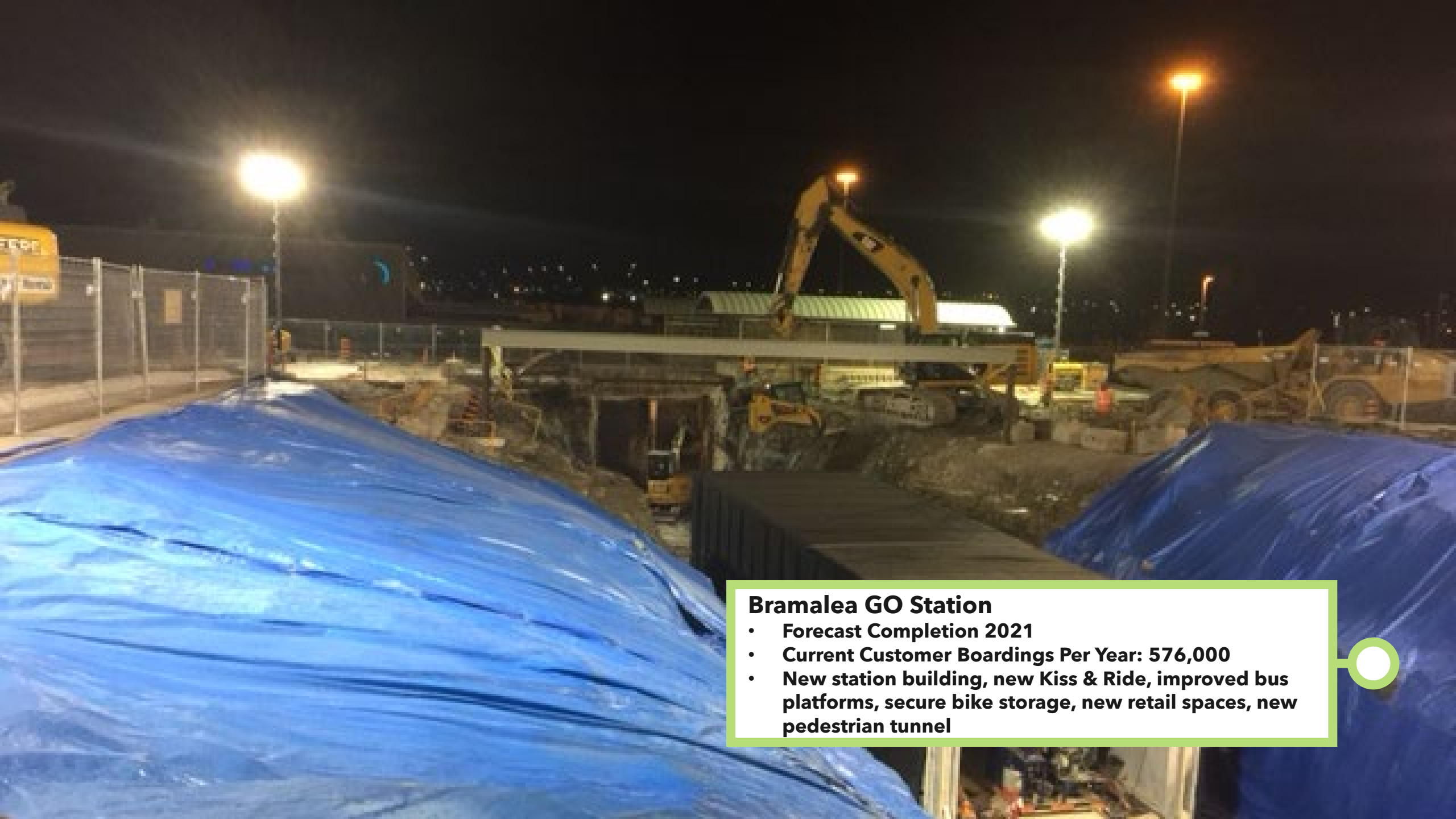
Milliken GO Station

- **Completion 2021**
- **Current Customer Boardings Per Year: 195,000**
- **New second track and platform, renovated existing platform, two new pedestrian tunnels with elevators, canopies and integrated shelters**



Stouffville Line Double-Tracking

- **Forecast Completion 2020**
- **Converting 18 km of railway corridor from single to double-track in Scarborough and Markham**



Bramalea GO Station

- **Forecast Completion 2021**
- **Current Customer Boardings Per Year: 576,000**
- **New station building, new Kiss & Ride, improved bus platforms, secure bike storage, new retail spaces, new pedestrian tunnel**



Bloomington GO Station

- **Forecast Completion 2020**
- **Forecast Customer Boardings Per Year: 253,000**
- **Located at Highway 404 & Bloomington Road**
- **Over 1000 parking spaces, bike shelters, Kiss & Ride, bus loop, station building targeting LEED Gold**



Union Station Bus Terminal

- **Forecast Completion 2020**
- **Existing USBT hosts 485 bus trips per weekday, transporting 13,600 weekday riders**
- **New USBT housed in base of 81 Bay St tower, will enable second tower at 141 Bay St (existing USBT)**
- **Elevated park overtop the rails will host a variety of programs and events**



Confederation GO Station Bus Park & Ride

- **Forecast Completion 2019**
- **Construction on the GO bus loop has started and schedule to be completed later this year**
- **Track infrastructure to enable improved rail service scheduled to begin this summer**



Eglinton Crosstown LRT - Keelesdale Station

- **Completion 2021**
- **Forecast Customer Boardings per AM peak hour: 2,050**
- **76,000 cubic meters of soil removed; 3 separate entrances**
- **2300m² of decking, 5 basketball courts, covers the site allowing traffic flows**



Eglinton Crosstown LRT - Laird Station

- **Completion 2021**
- **Forecast Customer Boardings per AM peak hour: 1,100**
- **Includes two entrances, 60 outdoor bicycle parking spaces, a station plaza and retail space**
- **Built in mined cavern that accommodates both station facilities and adjacent storage / turnback tracks**



Eglinton Crosstown LRT - Mount Dennis Station

- **Completion 2021**
- **Forecast Customer Boardings per AM peak hour: 3,500**
- **Western terminus of Phase One**
- **Part of a designated mobility hub; includes integrated railway station served by GO Kitchener and UP Express trains and a new 15-bay bus terminal for connections with TTC buses**



Eglinton Crosstown LRT - Track Installation

- **As of March 2019, 14.6km of track had been installed both within the Maintenance & Storage Facility and on the line proper**
- **Visible progress on the elevated guideway near Mount Dennis station and on surface section in Scarborough**
- **A total of 47km of track will be laid by completion**



Eglinton Crosstown LRT - Maintenance & Storage Facility

- Supports fleet of light rail vehicles (LRVs) and their crews, including office and maintenance space
- Reached readiness to accept vehicles in 2018
- Buildings cover 20,000 m², or 4 NFL football fields

Open to the public at Doors Open Toronto on May 25



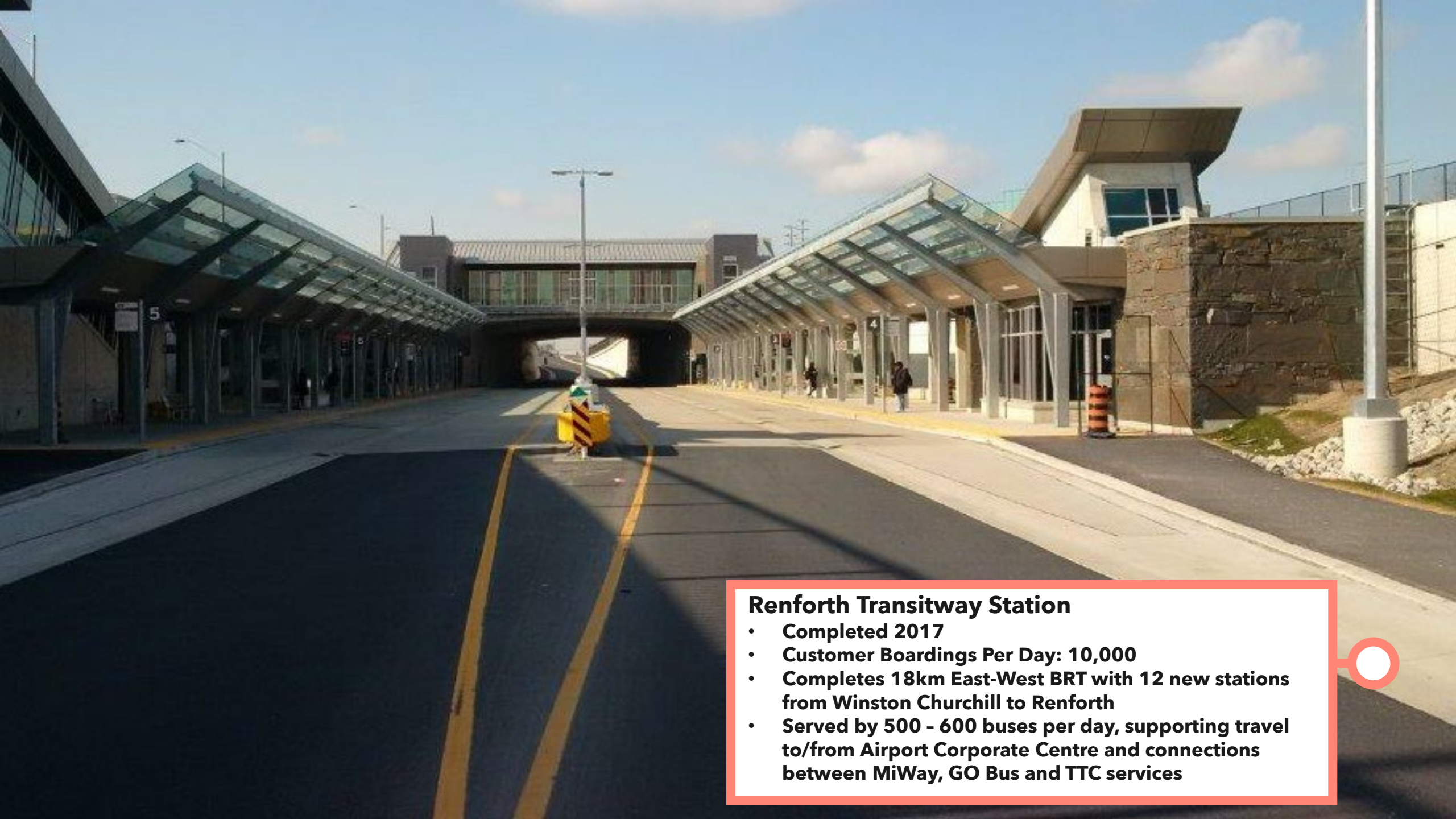
Eglinton Crosstown LRT - LRVs

- **Fleet of 76 LRVs ordered from Bombardier**
- **6 now undergoing testing at Maintenance & Storage Facility**
- **30-metre LRVs can be coupled into longer trains**



York Viva Next BRT

- **First segment opened 2013; final segment target completion in 2020**
- **Customer Boardings Per Year: 9.6m**
- **43 stations over 34.6 km**
- **35% reduction in journey times**
- **Aligned with significant development along corridor**



Renforth Transitway Station

- **Completed 2017**
- **Customer Boardings Per Day: 10,000**
- **Completes 18km East-West BRT with 12 new stations from Winston Churchill to Renforth**
- **Served by 500 - 600 buses per day, supporting travel to/from Airport Corporate Centre and connections between MiWay, GO Bus and TTC services**



Kitchener GO Bus Facility

- **Completed 2018**
- **Storage and maintenance for 33 buses**
- **10 routes operate from facility at present; offers increased flexibility for future service**
- **LEED Gold certified**



Whitby Rail Maintenance Facility

- **Completed 2018**
- **50,000 m² facility on 76 acre site**
- **11 bays for locomotive repair and 12 bays for coach repair**
- **Supports recent service expansions**



Pickering Pedestrian Bridge

- Completed 2018
- 250 metres long, one of the longest enclosed pedestrian bridges in the world
- Spans Hwy 401, Pickering Parkway, CN and GO railway corridors: 18 lanes of roadway and 5 tracks



Oshawa GO Station

- Completed 2018
- Current GO Rail Customer Boardings Per Year: 856,000
- Modern ticketing counter and waiting area
- LEED certified and winner of an Urban Design Award



Guildwood GO Station

- **Completed 2018**
- **Current Customer Boardings Per Year: 242,000**
- **Rebuilt platforms, new pedestrian tunnels, and improvements to Kiss & Rides and parking lots**
- **First station with green roof and atrium in the network**



Lakeshore West Line - Humber River Bridge

- More than 130 years old, withstood Hurricane Hazel in 1954
- Weighs 7,000 tonnes
- Replacement spans will go 100+ in service life
- Safely replaced over 9 weekends



Mimico GO Station

- **Current Customer Boardings Per Year: 335,000**
- **Partnering with Vandyk to construct a new main station building, parking and cycling/walking path integrated into their development**

