

# Integrated Art **Program**

Gunta Mackars, Vice President (A), Design Excellence

Laura Berazadi, Senior Advisor, Integrated Art

**Metrolinx's integrated public art program is an important part of the customer experience, with a mandate to build a cohesive collection that is regional in scale, and representative of the best of contemporary artwork.**

# INTEGRATED ART PROGRAM BENEFITS

Community impact - creating civic pride, sense of place, special local identity

Enhanced experiential design, with the current and future customer in mind

Reputational leadership - higher standard of civic leadership and social responsibility

Celebrate completion of a major program of transportation improvements and support public perception of Metrolinx brand

Safe, active space design

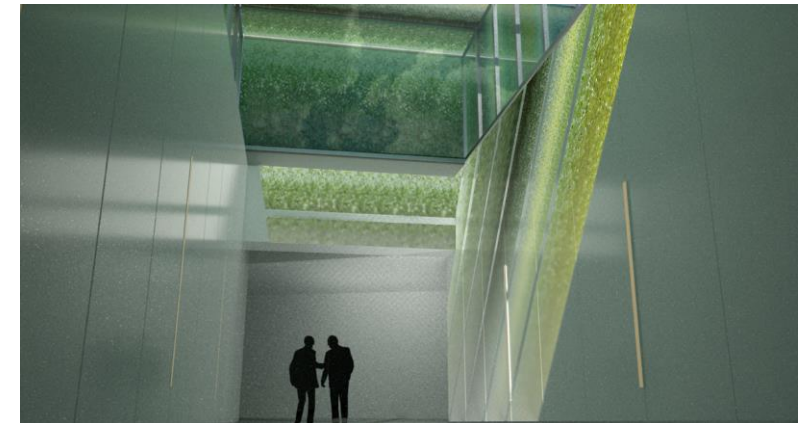
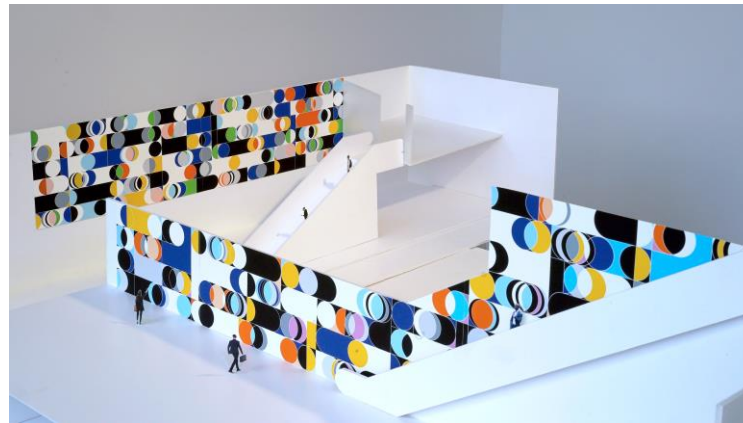
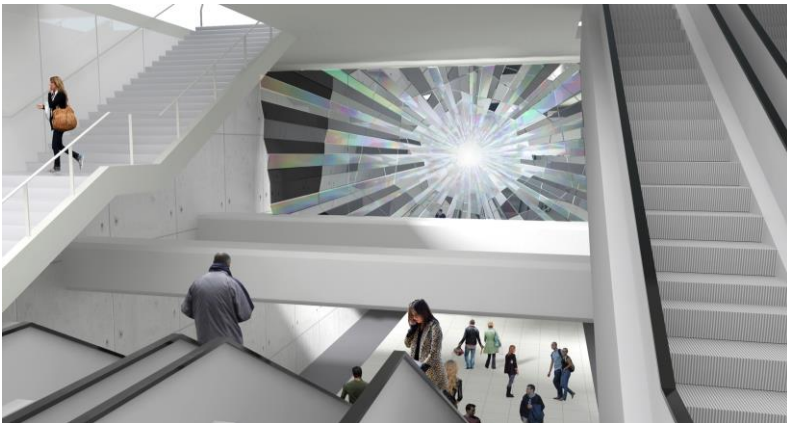
Local ownership - gives a sense that the common good is looked after and mitigates vandalism

Customers are not just passengers - they are neighbours and citizens of the city at large for whom the beautification of infrastructure is important

Policy alignment with the jurisdictions we are working in (1% for art)

# PROGRAM OVERVIEW

- Program initiated in 2014; policy approved 2016
- Guideline of 1% of eligible hard construction costs dedicated to artwork
- Artwork must be permanent and integrated (replaces standard finishes)
- Design for minimized operating and maintenance costs
- Professionally-led process for artist and artwork selection
- Art integrated with the entire project in a way that creates a journey as desirable as the destination



EXAMPLE INTEGRATED ARTWORKS FROM THE EGLINTON CROSSTOWN LRT - A METROLINX PROJECT

# PROGRAM LAUNCH EVENT

January 16, 2018 was a media event for the launch of the artwork concepts for the Eglinton Crosstown LRT, and Metrolinx's Integrated Art program.

Coverage by CBC, CTV, the Toronto Star and other local media.

Initial public response has been positive, with requests for more art across the entire LRT line, and more fully integrated with station design.

"Fun and bright!"

"Bold, nice colours, retro Montreal Metro feel"

"Have to say they look great"

"Public art done right"





# EGLINTON CROSSTOWN LRT



EVVOLO  
(Meaning  
意義)

# MOUNT DENNIS

Up to This Moment

Hadley + Maxwell (Canadian)

A video installation and sculptural wall treatment in the upper concourse of the historic former Kodak building. The artwork acts as an evolving visual archive documenting the changes of the site. The video offers a playful “meditation on creation, destruction and renewal”.





# MOUNT DENNIS - EMERGING ARTIST

Untitled

Sara Cwynar (Canadian)

Brightly coloured photographic mural, printed on multiple layers of glass panel, displaying a digitally created collage of found images and objects exploring the history of photography. This wall-sized artwork will be mounted in a pedestrian corridor within the station.



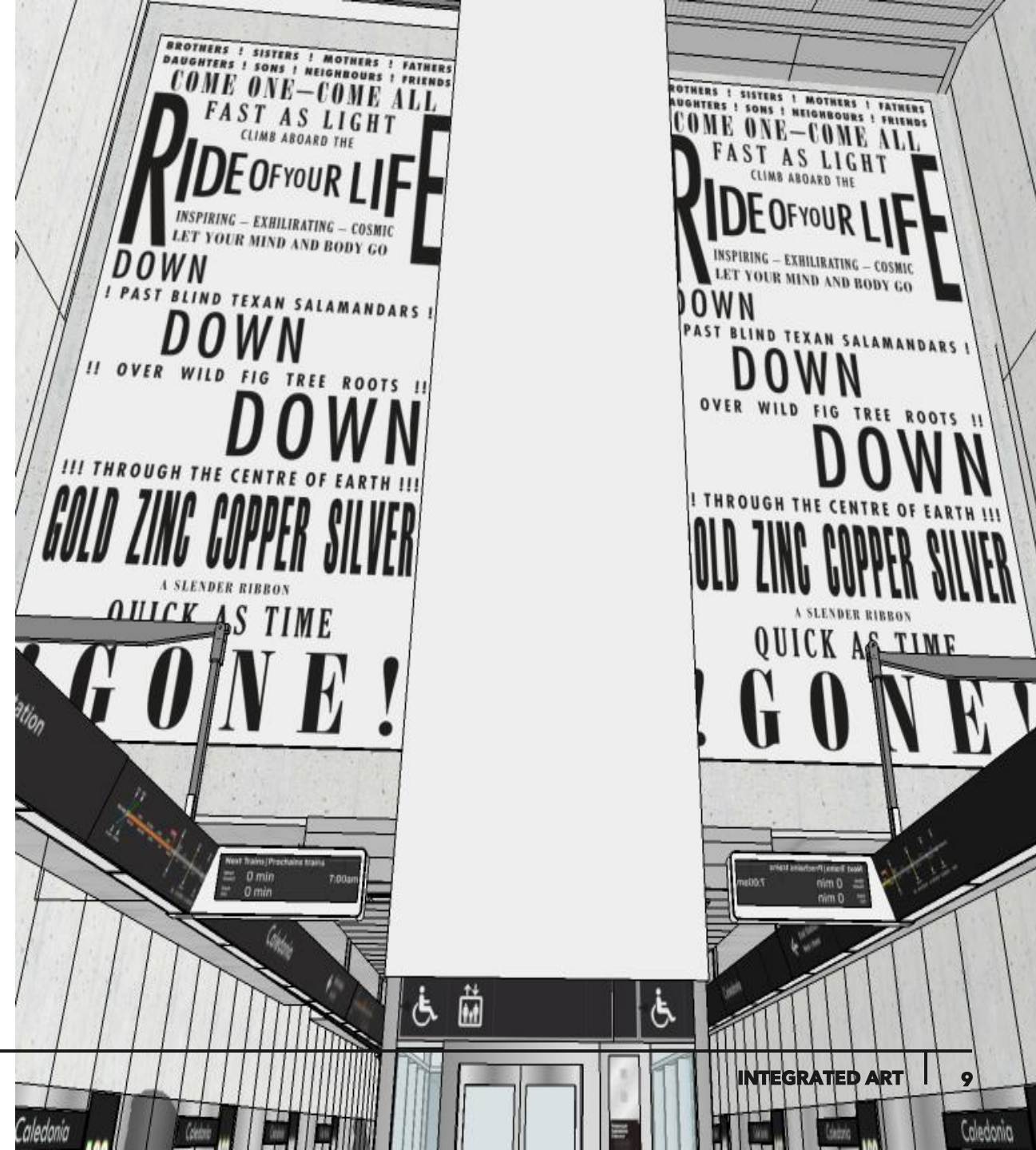


# CALEDONIA

Ride of Your Life

Janice Kerbel (Canadian/British)

Large-scale mosaic wall installations above track level pay homage to the historic role that signage, architecture, and design has played in rapid transit. Using hyperbolic language, the work recalls letterpress fairground poster aesthetic to evoke a sense of wonder in the viewer.



# CEDARVALE

## Super Signals

Douglas Coupland (Canadian)

A design of brightly coloured concentric circles that float on a background of contrasting black and white lines is created from aluminium panels as part of an immersive wall installation. The artwork provides passengers with an experience intended to uplift and amplify the enjoyment of being in transit.





# EGLINTON

Light from Within

Rodney Latourelle with Louise Witthoeft  
(Canadian)

A large wall panel made of dichroic and mirrored glass, inspired by the prismatic and reflective qualities found in minerals, crystals and gemstones. This artwork emphasizes the subterranean nature of rapid transit, creating a reflective backdrop and bringing light deep into the station, above track level.

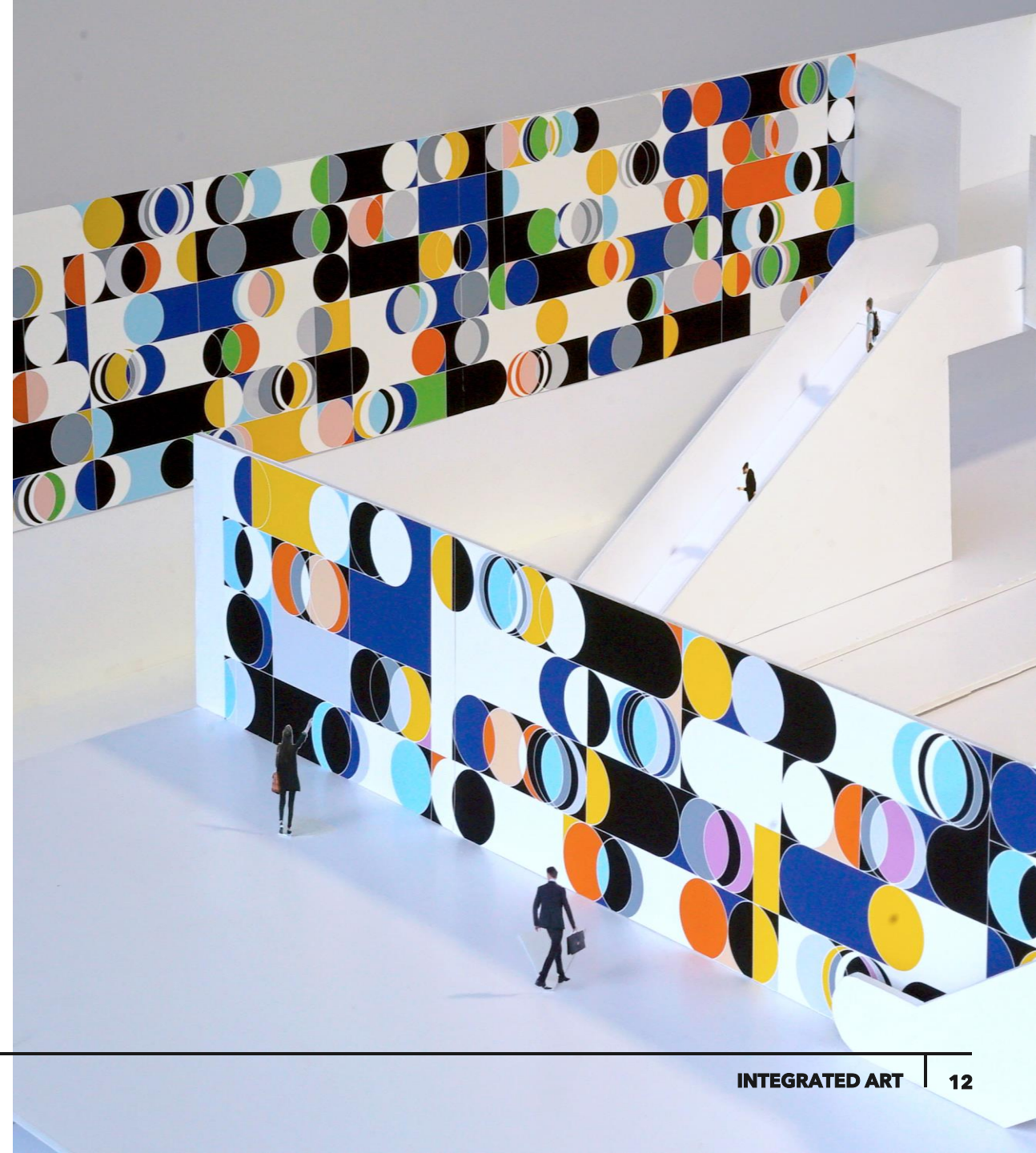


# SCIENCE CENTRE

Total Lunar Eclipse

Sarah Morris (American)

Silkscreened, oversized porcelain tiles provide an evolving spectrum of colour and pattern, inviting viewer reflection on concepts of light, scale, and motion through the space, and use the lunar cycle as the basis of the work. Located at concourse level of the station.





# KENNEDY

Locations of Meaning (for Toronto)  
Joseph Kosuth (American)

The artwork translates the word “meaning” into 72 languages spoken in the City of Toronto metropolitan area, laser cutting each translation into stainless steel, inset into etched tile to construct this large installation. Located at concourse level beneath a skylight.

[ (Έννοια) ]  
[ (Meaning) ]  
[ (意義) ]

	(Significado)	(Znaczenie)	(Ne'tata'suwaqan)	(Ἕννοια)	(இயி)
(Betekenis)	(Kahulugan)	(Ikidowin)	(Ishcishwāwin)	(Sivunig)	(Značenje)
(Mening)	(Sniahodi)	(znaczenie)	(Maana)	(Reiksmė)	(Nozime)
(Význam)	(Pomeň)	(Fisser)	(Betekenis)		

## KENNEDY - EMERGING ARTIST

Reorganization of One Hedge

Dagmara Genda (Polish/Canadian)

This site-specific artwork examines "how things change with time". Images from a photographic study are printed onto glass. Coloured light will stream in through a station skylight, and light boxes with the same motif will be set in the walls of a hallway, bringing light and greenery into the station.





# UPCOMING PROJECTS - DAVENPORT DIAMOND - ANNOUNCED FEBRUARY 2018

- \$4M investment in art for the Davenport community contributes to Toronto's public realm
- 1.4km of art, defines the guideway as a feature and creates a local landmark



# UPCOMING PROJECTS - ARTWORKS ACROSS THE TRANSIT SYSTEM

- 18 projects
- 34 individual artworks
- ~\$25-million in funding committed to system beautification to date
- Program continues to grow





