

Finch West LRT Project Construction Liaison Committee (CLC)

Tuesday, October 5, 2021



AGENDA

- **Welcome and Introductions**
- **Safety Moment**
- **Land Acknowledgement**
- **Review of Minutes and Action Items**
- **Major Milestones**
- **Work Update**
 - Finch West Station
 - Utilities and Roadwork
 - Maintenance and Storage Facility
 - Hwy 400 Bridge
 - Humber College Stop
- **Communications and Community Engagement**
- **Roundtable discussion**



Safety Moment

Land Acknowledgement

METROLINX LAND ACKNOWLEDGEMENT

Let us take a moment to acknowledge that we are on the traditional territory of Indigenous Peoples including the Anishnabeg, the Haudenosaunee and the Wendat peoples.

We are all Treaty people. Many of us have come here as settlers and immigrants...in this generation or generations past.

Metrolinx declares its commitment to building meaningful relationships with Indigenous Peoples.

We acknowledge the historic and continued impacts of colonialization and the need to work towards meaningful reconciliation with the original caretakers of this land.

We acknowledge that Metrolinx operates on lands covered by 20 Treaties, and that we have a responsibility to recognize and value the rights of Indigenous Nations and Peoples and conduct business in a manner that is built on the foundation of trust, respect and collaboration.

Review of Previous September 14, 2021 CLC Minutes and Action Items

REVIEW OF PREVIOUS CLC MEETING

- Consult with Traffic department to determine if adjustments can be made to traffic plan at Signet Drive, Arrow Road, Weston Road, Finch Ave W. - *Completed*
- Arrange clean up of dust at Islington Avenue and Highway 27- *Completed*
- Contact Elections Canada to coordinate access to polling station at Gord and Irene Risk Community Centre located at 2650 Finch Ave W - *Completed*
- Conduct site visit and arrange clean up of dust at Finch Ave W and Arrow Rd.- *Completed*



**An Important Milestone:
Finch West Light Rail Transit
Second Vehicle Delivery**

SECOND VEHICLE DELIVERY



Photo: Vehicle at MSF.

Finch West Station Update

CURRENT WORKS

Finch West Station, Finch Avenue West at Keele Street

- Piling, excavation and traffic deck on the east side of the Finch-Keele intersection is complete.
- Traffic is on the east side, and work takes place on the west side of the intersection.
- Piling, excavation and traffic deck is scheduled for one month on the west side.
- Excavation for the main entrance building is finished and rebar placing has started.
- Traffic stage 8.0 will be implemented in October 2021 and will remain in place for ten months, approximately.

Photo: Keele and Finch station and portals, view west.



CONSTRUCTION PROGRESS PHOTO



Photo: Aerial view west, Finch and Keele station portal and stop excavation and construction work.

Keele Street to Weston Road Corridor Work

CURRENT AND UPCOMING WORKS ACROSS FINCH AVENUE WEST

From Keele Street to Jane Street

- Road widening and paving continues.
- Relocation of telecommunication and hydro (duct banks, cables, and new chambers) along Finch Avenue West is almost done.
- Installation of bases and poles for Overhead Catenary System (OCS) continues.
- Guideway work at Tobermory Dr. and Finch Avenue West intersection continues.

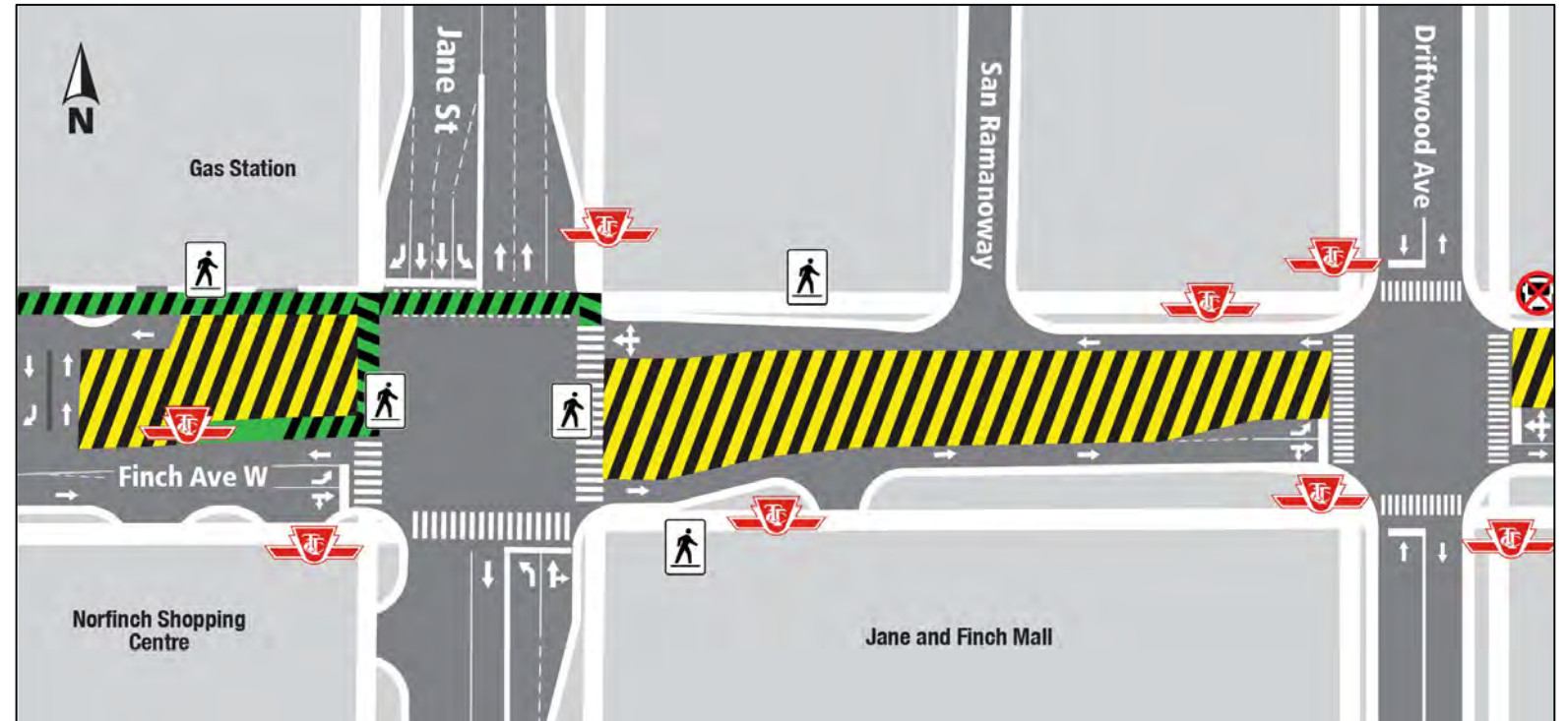
Photo: View of the intersection of Finch Avenue West and Jane Street



TRAFFIC STAGING IN THE FINCH/JANE AREA.

From Driftwood Avenue to Jane Street

- Final median work has started.
- The work is scheduled to start mid October and is anticipated to be finished in winter of 2022.
- Westbound left-turn lane open at Jane intersection
- The lanes going east/west will be positioned adjacent to the guideway in the center.



Map: Traffic configuration at Jane street. and Finch Ave. intersection.

CURRENT AND UPCOMING WORKS ACROSS FINCH AVENUE WEST

From Keele Street to Jane Street

- Access at Tobermory Dr. and Finch Avenue West will be restored at the beginning of October 2021.
- Track Slab is done at the intersection and rail is installed.
- Track Slab between Tobermory Drive and Topcliff Avenue is anticipated to complete this fall.



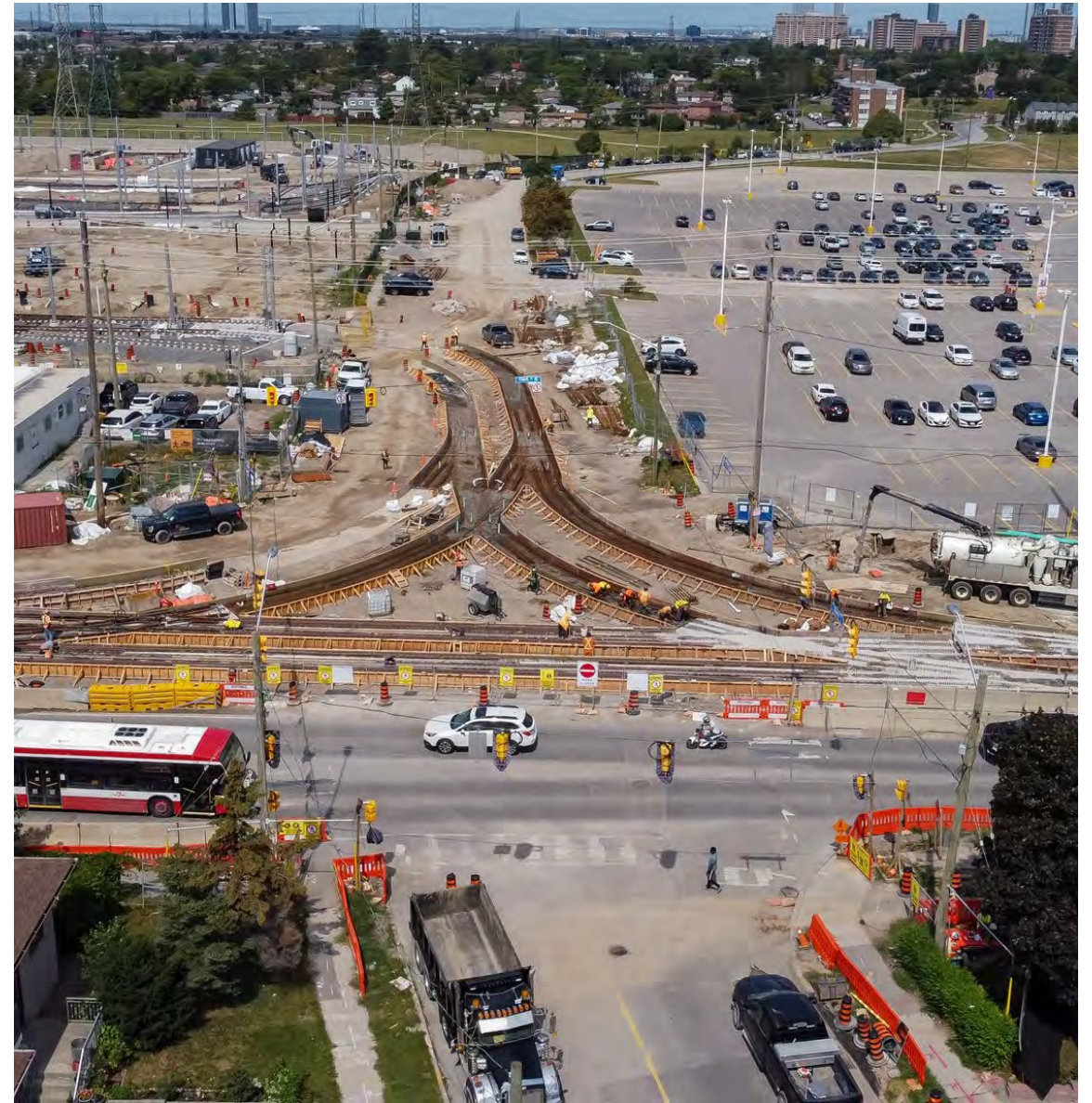
Map: Traffic configuration at Tobermory Dr. and Finch Ave. for guideway work at the intersection.

CURRENT AND UPCOMING WORKS ACROSS FINCH AVENUE WEST

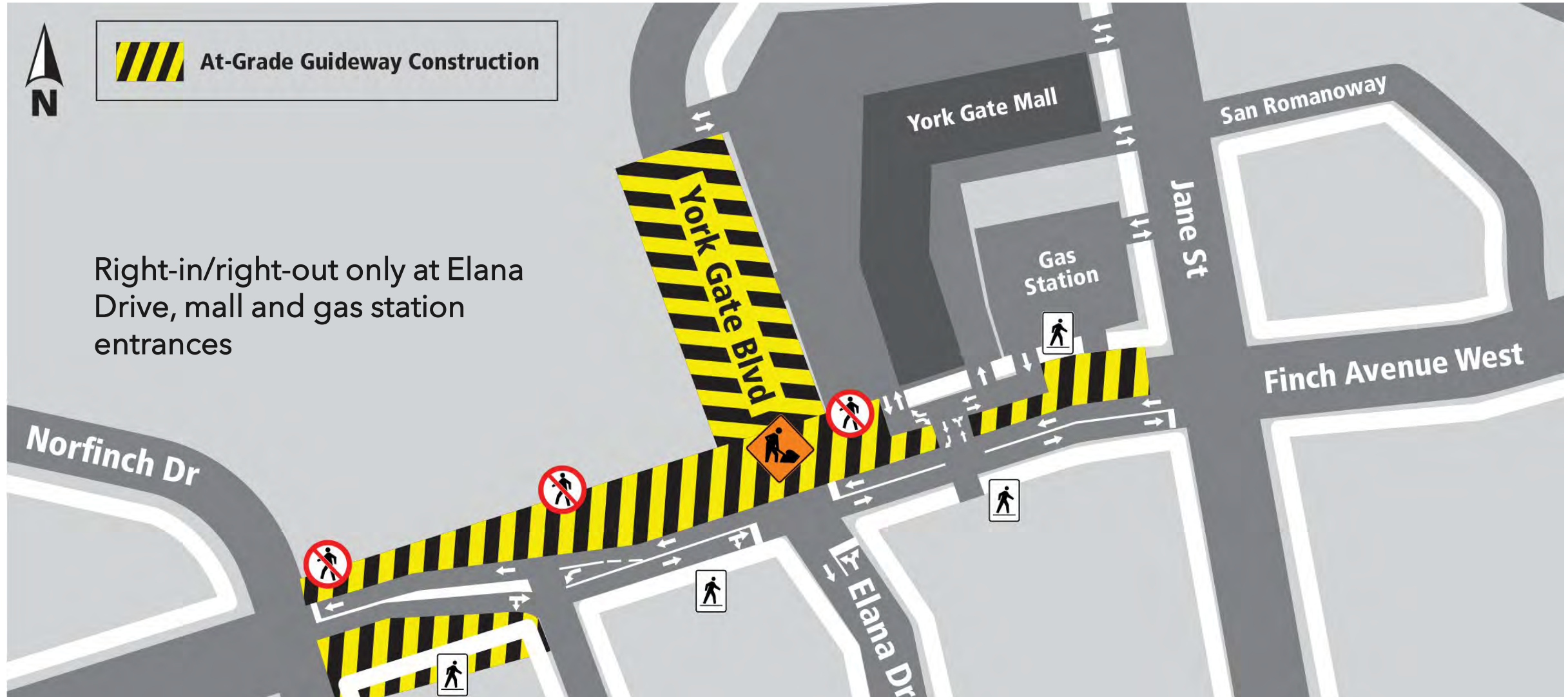
From Jane Street to Norfinch Drive/Oakdale Road

- Rebar placing is done.
- Concrete pour for track slab is ongoing.
- Track slab completion in York Gate Boulevard is scheduled to be completed early October.
- York Gate Boulevard is closed, north of Finch Avenue West up to first driveway entrance to the Yorkgate Mall.
- York Gate Boulevard is anticipated to be re-opened later in the fall 2021.

Photo: North view of Finch Avenue West and York Gate Boulevard.



TRAFFIC CONFIGURATION AT FINCH AND YORK GATE BOULEVARD

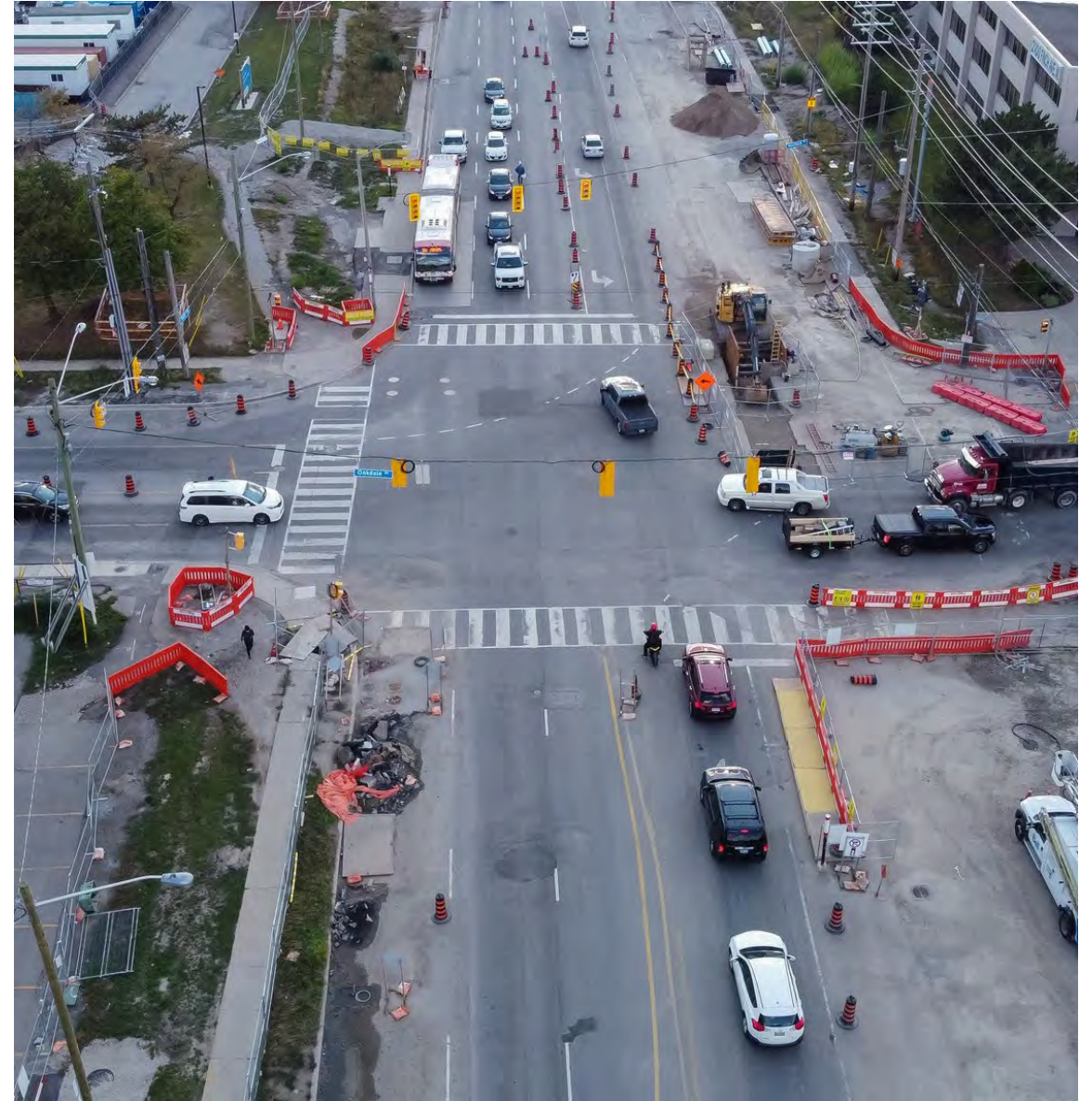


CURRENT AND UPCOMING WORKS ACROSS FINCH AVENUE WEST

From Norfinch Drive/Oakdale Road to Signet Drive/Arrow Road

- Watermain installation at Norfinch Drive and Finch Avenue West is nearly completed. Work takes place in normal hours (7AM to 11 PM, approximately).
- Watermain installation at Signet Drive is ongoing. Work takes place in normal hours (7AM to 11 PM, approximately).
- In case of overtime work or weekend work, related info will be shared.
- Hydro and telecommunications relocations continue both sides of Finch Avenue West.
- Underground electrical work underway from the CP Bridge to Signet Drive.

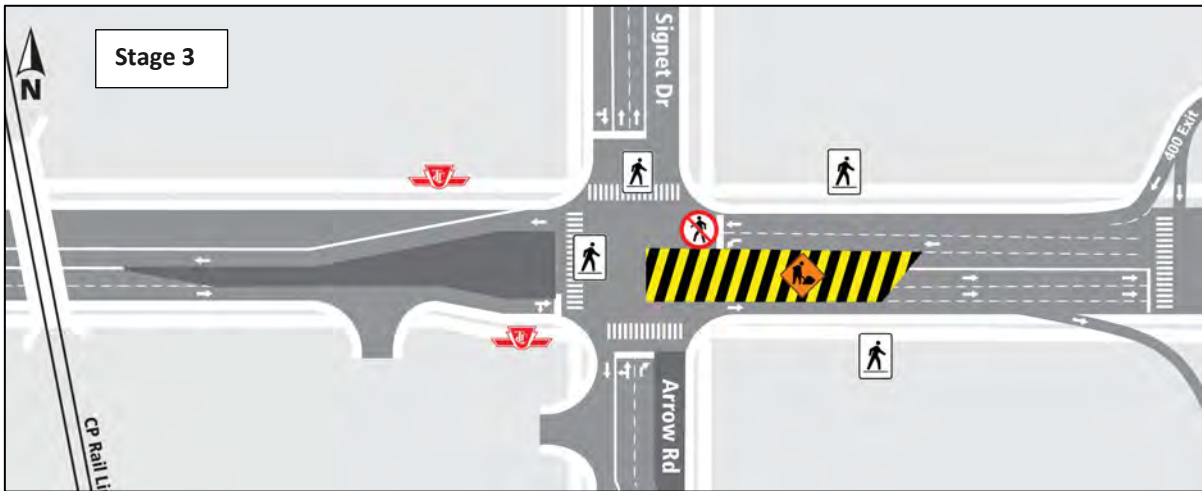
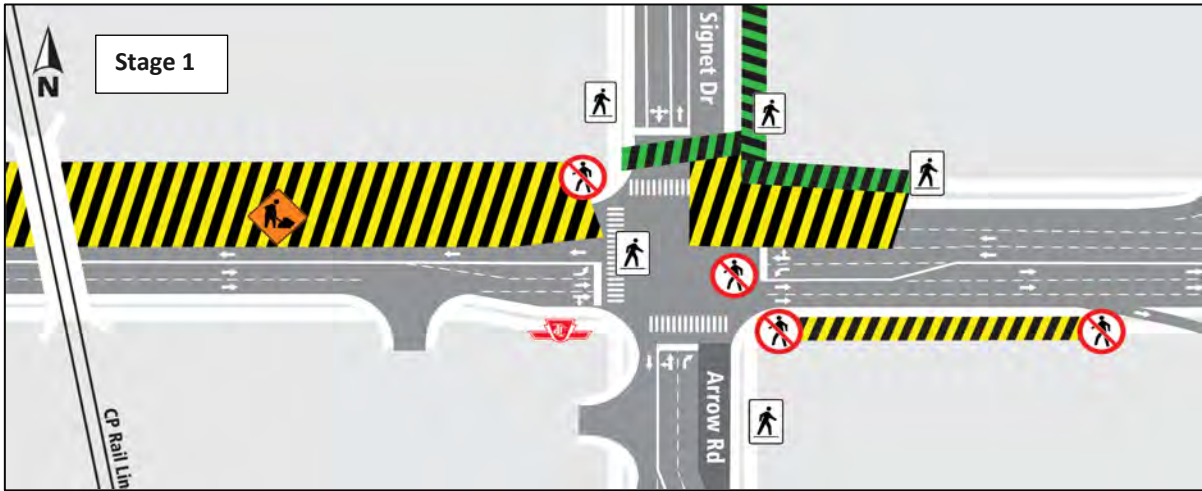
Photo: View of the intersection of Finch Avenue West and Norfinch Drive.



UPCOMING TRAFFIC CONFIGURATION AT FINCH AND NORFINCH DRIVE/OAKDALE ROAD

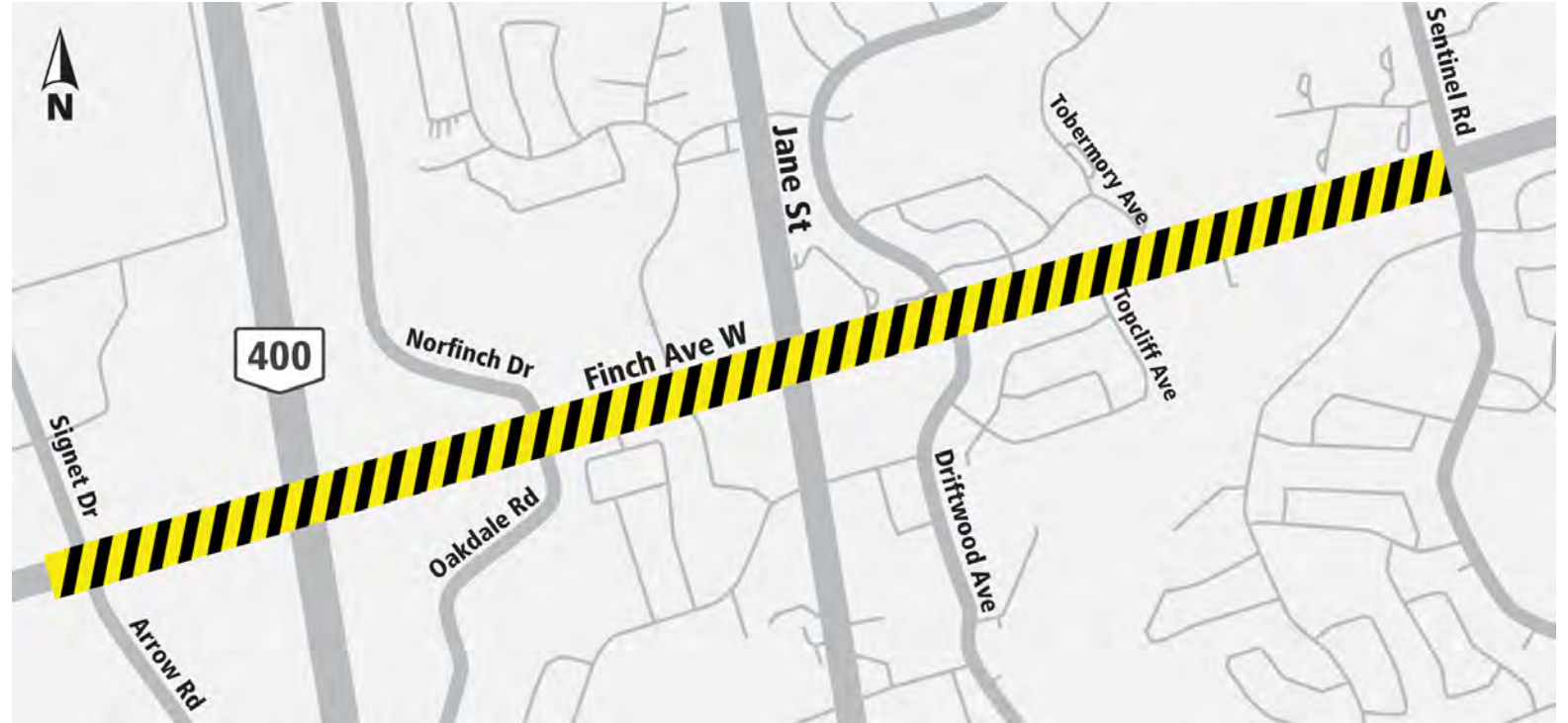


FOUR STAGES OF TRAFFIC CONFIGURATION, SIGNET DRIVE/ARROW ROAD STARTED SEPTEMBER 13, 2021,



OVERNIGHT CONSTRUCTION WORK CONTINUES

- Overnight work continues as crews install watermain, storm sewers, hydro and telecommunications infrastructures across Finch Avenue West.
- Guideway work to take place overnight.
- Occasional night work takes place from 6 pm to 7 am. Additional notices will be provided.
- Higher noise or vibration activities are scheduled before 11 pm and levels are monitored, as needed.



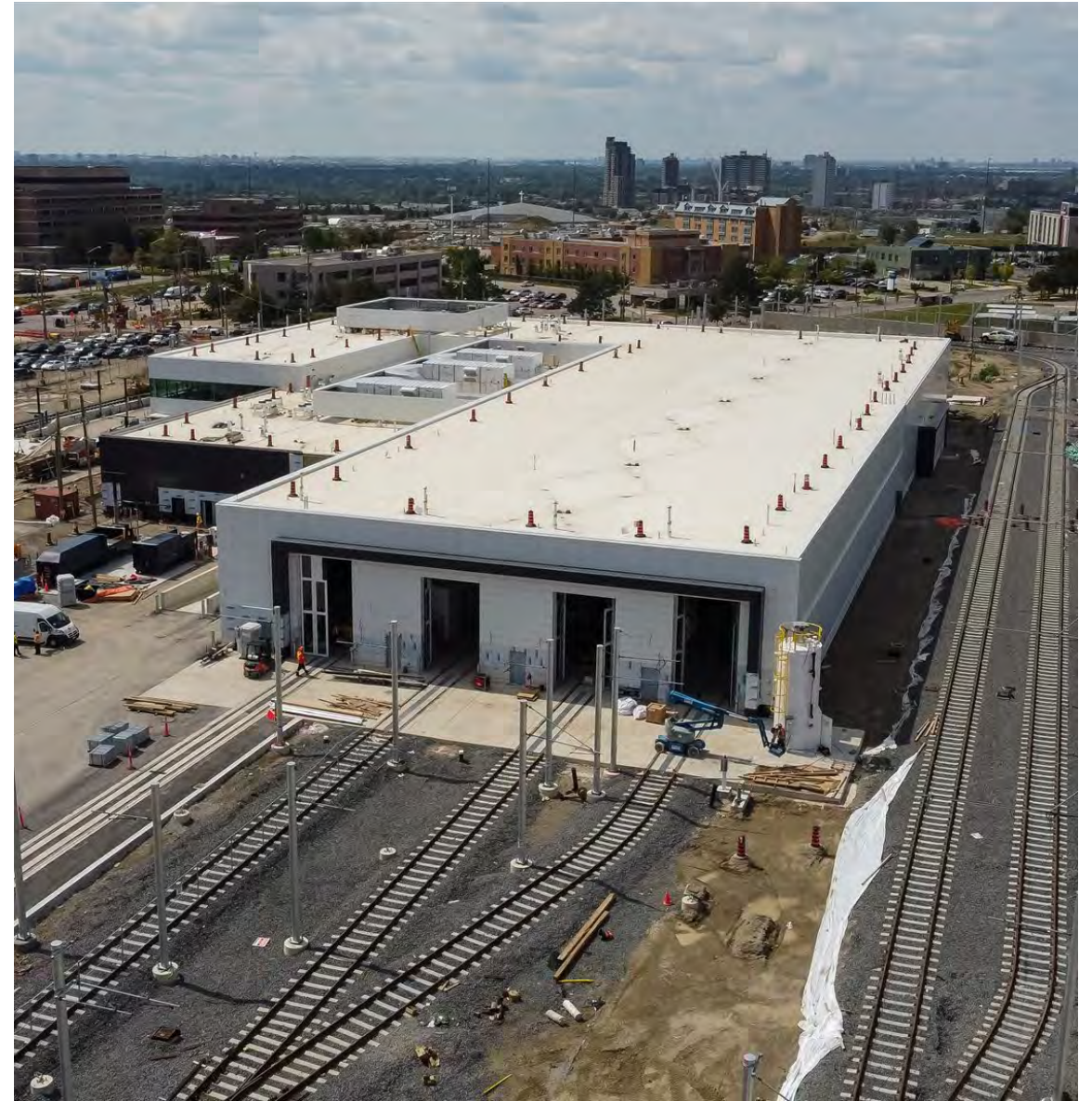
Map: Area of overnight construction work.

Maintenance and Storage Facility

CURRENT WORKS

- Mechanical, electrical and plumbing installations, and equipment installation is nearly complete.
- Drywall partitions is almost finished.
- Painting is in progress. Nearly complete.
- Floor finishes (washroom tiles, office carpet) is progressing and is near completion.
- LRT equipment installation is in progress.
- Parking lot final grading and curbs is almost done.
- Landscaping is ongoing.
- The delivery of the second LRV - October 5, 2021
- Traction Power Substation 9 is energized. MSF Building to follow.

Photo: Inside of the Maintenance and Storage Facility..



CONSTRUCTION PROGRESS PHOTO



Photo: Aerial view looking north east, Maintenance and Storage Facility.

Highway 400 Bridge Rehabilitation Update

CURRENT AND UPCOMING WORKS

- Road work and wet utilities installation is ongoing.
- Temporary closure of Highway 400 Northbound on ramp started on September 26, 2021.



Map: 400 ramp work.

CONSTRUCTION PROGRESS PHOTO, HIGHWAY 400



Photo: Aerial view looking east, Highway 400 and Finch Avenue West.

Weston Road to Highway 27

PREPARATORY WORK AND UTILITY RELOCATION - WESTON ROAD TO ISLINGTON AVENUE

- Crews and equipment will be working in multiple locations, Monday to Friday with some overnight and weekend work.
- Traffic patterns will change to lanes, crossings, sidewalks, and boulevards to allow crew to safely complete work.
- Motorists and pedestrians should be aware of and adhere to traffic/pedestrian signage and flag persons.
- Utility work is taking place in stages and will continue until mid 2022.
- Community members will be notified of water shut-off and power outages, if any, separately.



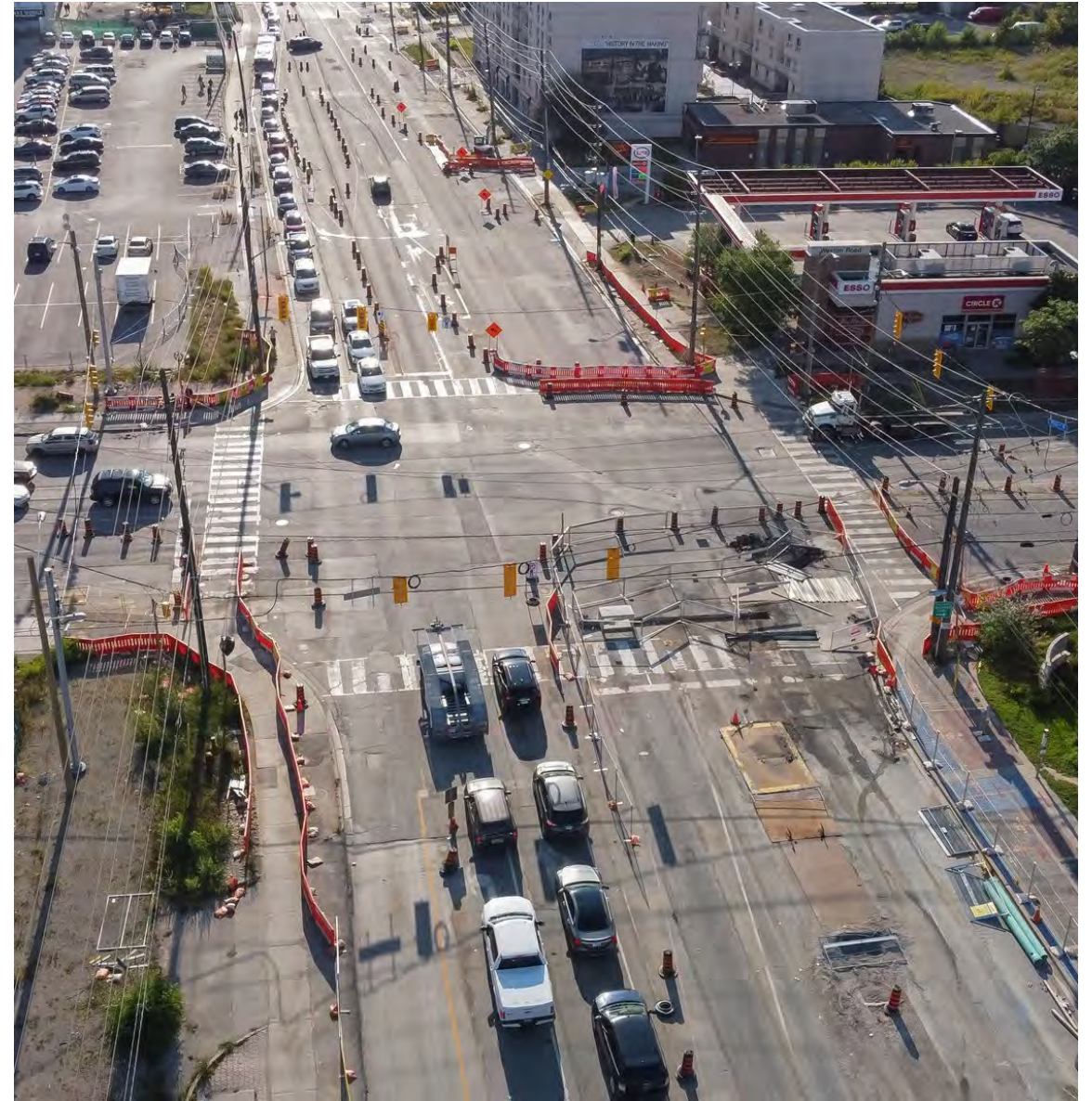
Map: Area of construction work.

WESTON ROAD AND FINCH AVENUE WEST INTERSECTION

Ongoing and Upcoming Works

- Watermain installation on the north side of the intersection is ongoing.
- After, a storm and sanitary sewer will be installed on the south side later in the fall of 2021.

Photo: View west at Finch Avenue West and Weston Road.



RETAINING WALL INSTALLATION NEAR FINCHDALE PLAZA

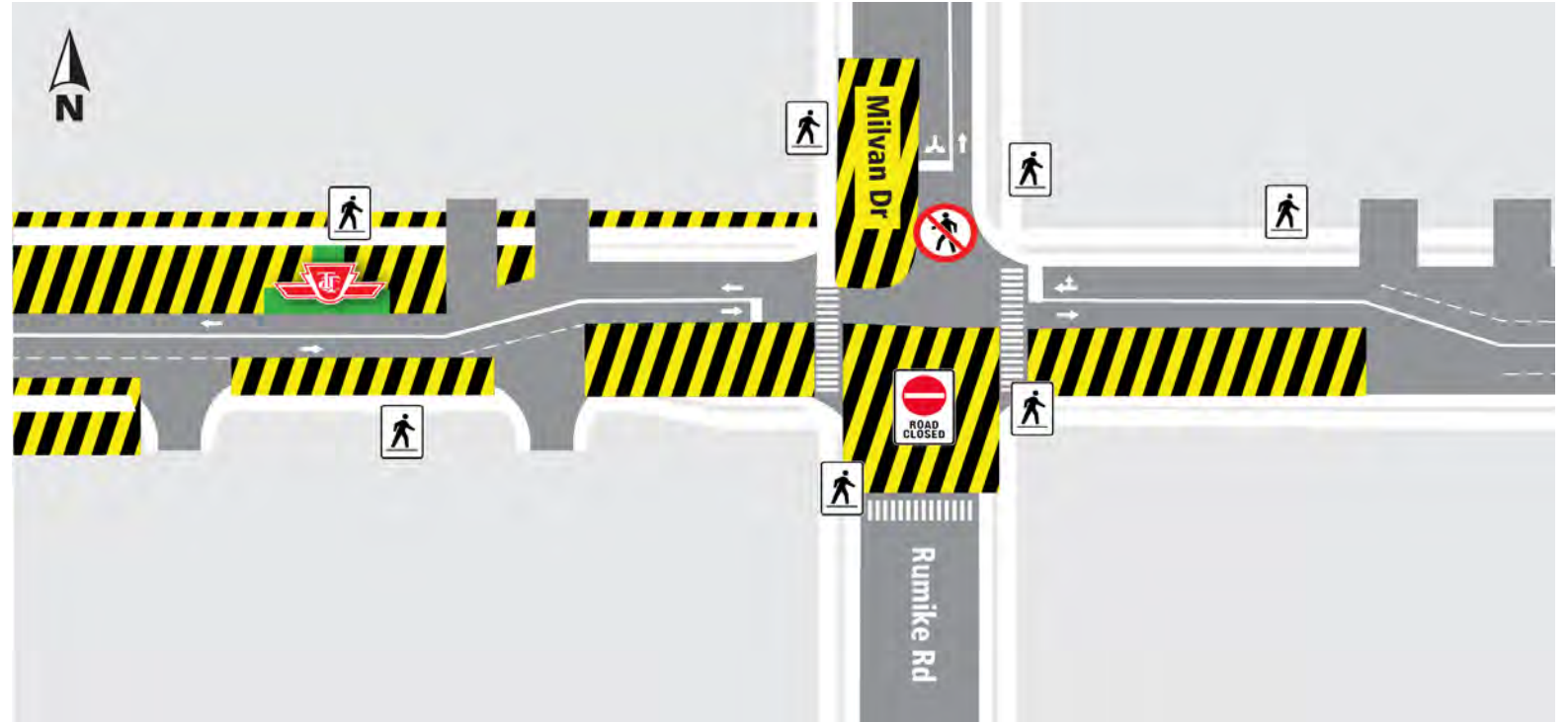
- Retaining wall installation near Finchdale plaza has started and expected to be finished in May 2022.
- Motorists and pedestrians should be aware of and adhere to traffic/pedestrian signage and flag persons.
- Community members will be notified of water shut-off and power outages, if any, separately.



Map: Area of construction work.

CLOSURE OF RUMIKE ROAD AT FINCH AVENUE WEST

- As part of the utility relocation in the area Rumike Rd. will be closed at Finch Avenue West for one week, approx.
- The closure is anticipated to start later in the fall, 2021.



Map: Area of construction work.

HUMBER RIVER BRIDGE REHABILITATION - FINCH AND ISLINGTON AVENUE INTERSECTION

- Ongoing since early April 2021 for 18 months, approximately.
- Work continues in the south - east quadrant (1).

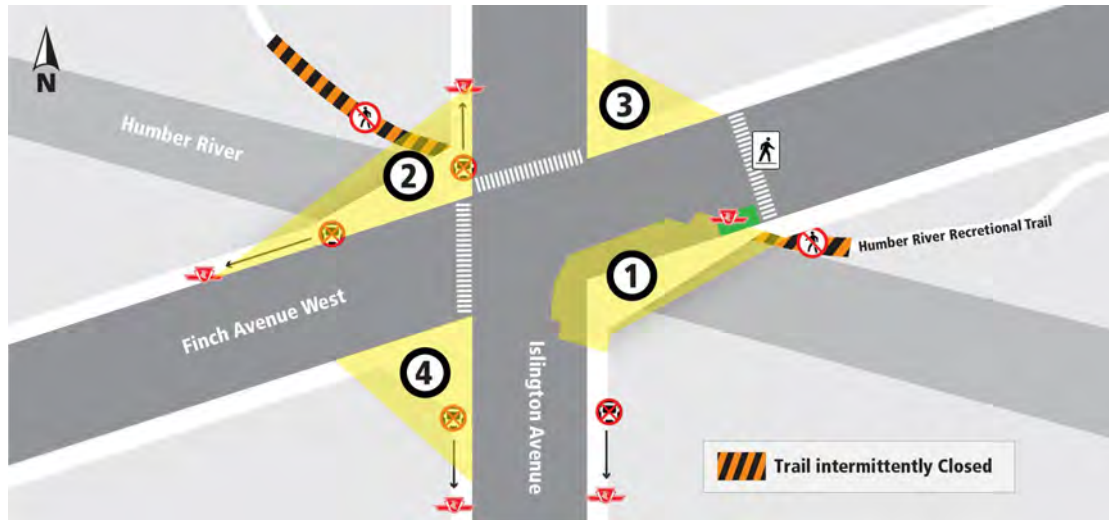
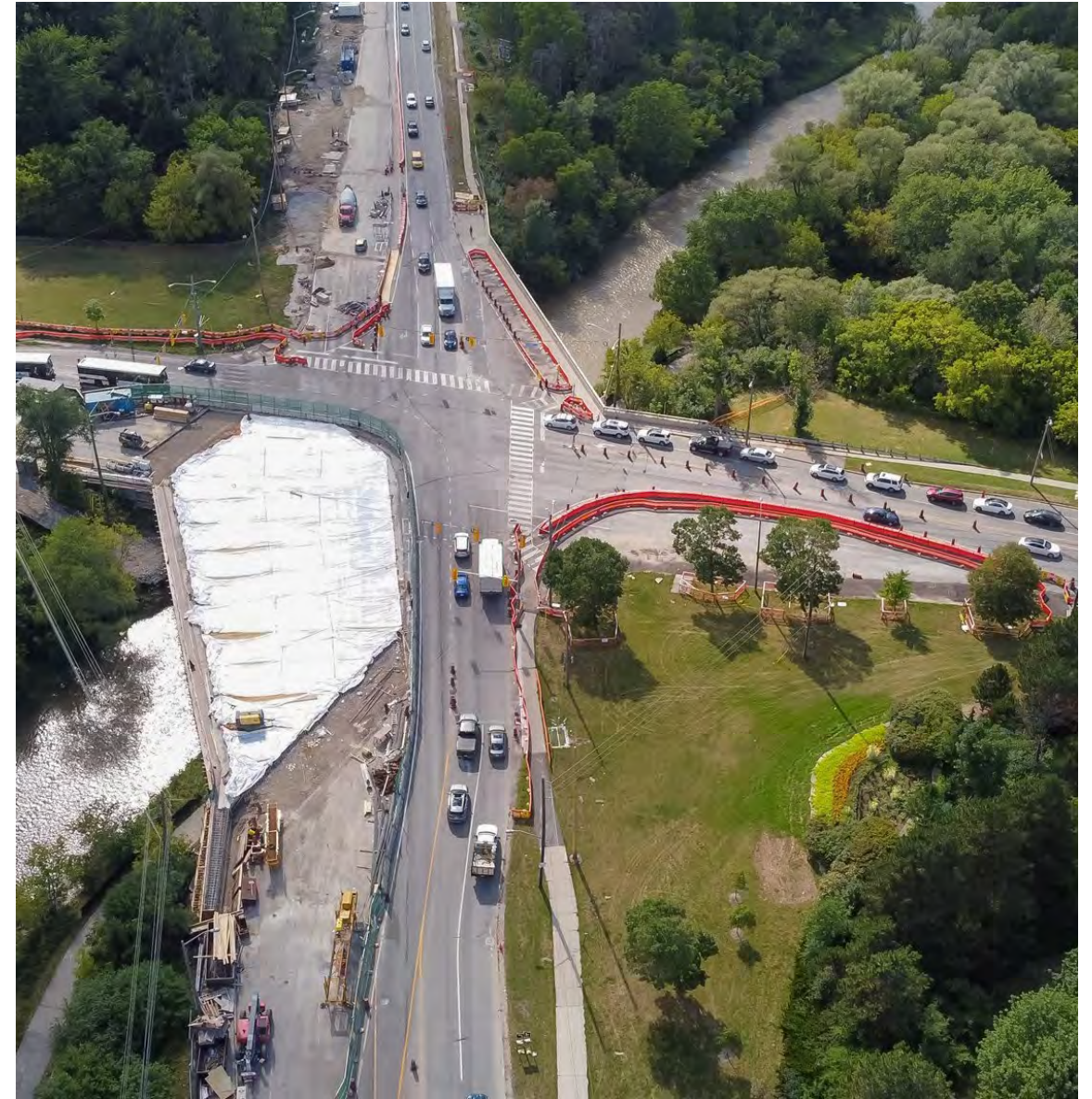
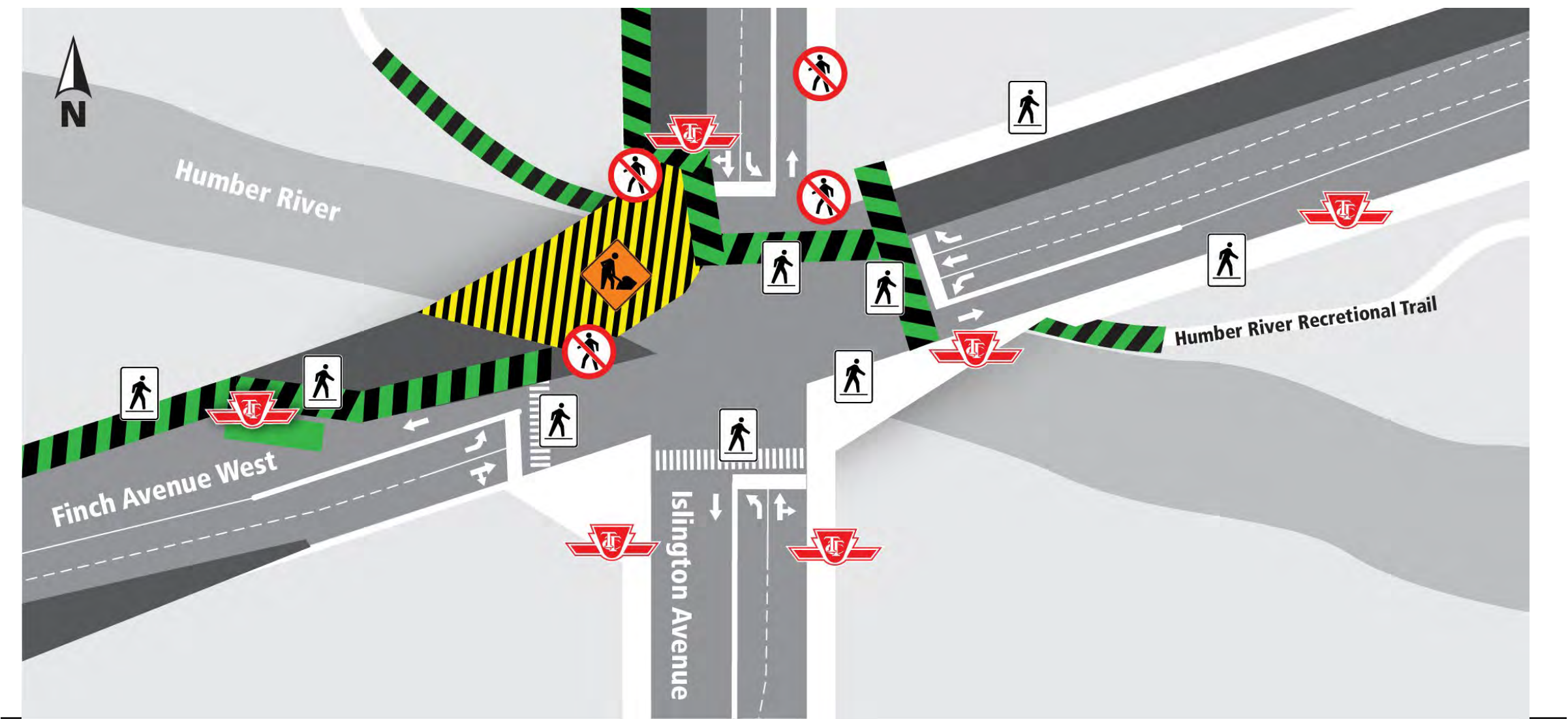


Photo: Aerial view Finch Avenue West and Islington Avenue.



NEW TRAFFIC CONFIGURATION AT FINCH AVENUE W. AND ISLINGTON AVENUE



WET AND DRY UTILITIES WORK FROM ISLINGTON AVENUE TO MILADY ROAD

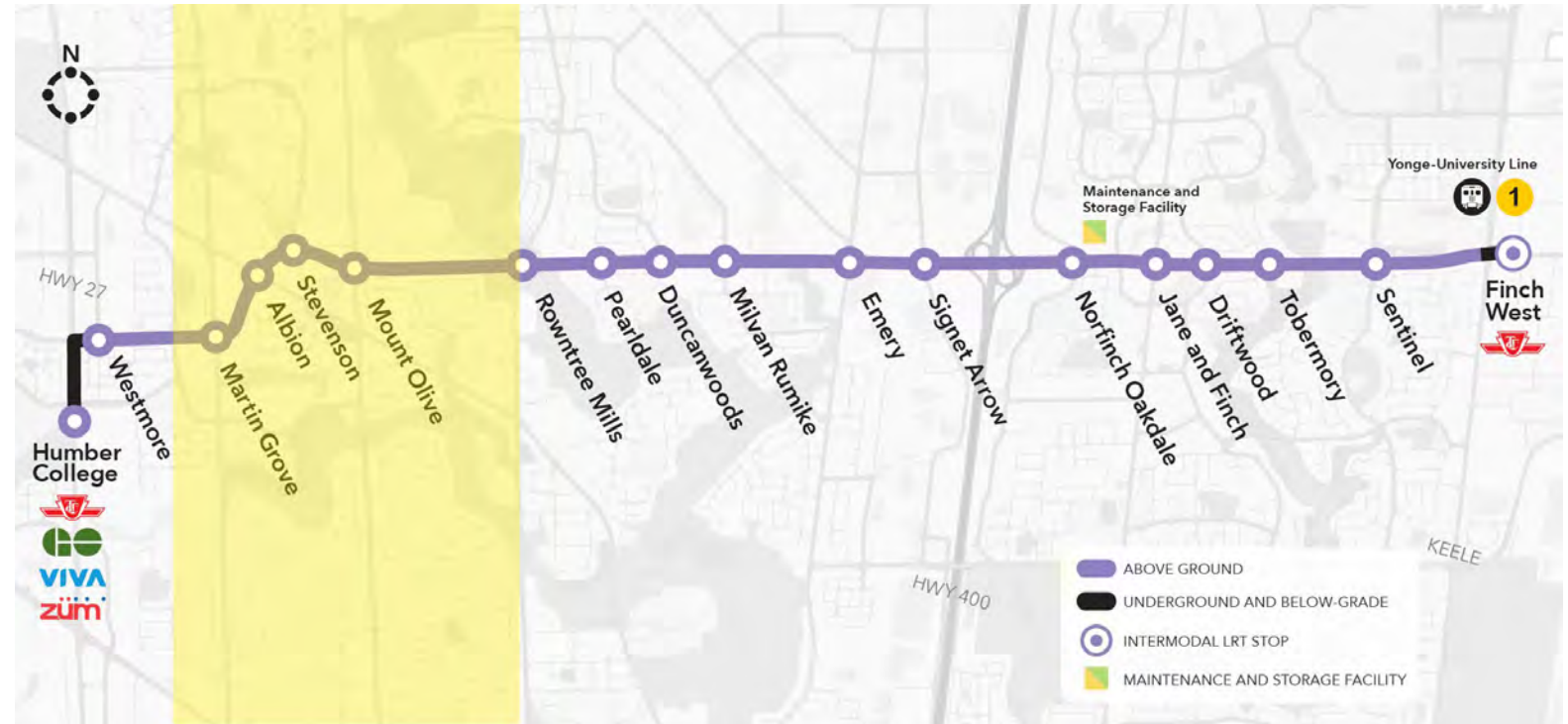
- Wet and dry utilities work between Islington Ave. and Milady Road starts in October 2021 till December 2021
- Bus stops will be relocated, if necessary
- North and south sidewalks will remain open.



Intersection of Finch Avenue West and Milady Road looking west.

UTILITY RELOCATION - SILVERSTONE DRIVE TO ISLINGTON AVENUE

- Crews and equipment area working in multiple locations, Monday to Friday with **some overnight and weekend work**.
- The relocation of telecommunications lines and hydro work is ongoing until late 2021, approximately.
- Traffic patterns will change to lanes, crossings, sidewalks, and boulevards to allow crew to safely complete work.
- Motorists and pedestrians should be aware of and adhere to traffic/pedestrian signage and flag persons.
- Power outages may be necessary to switch from the old to the new electrical system. If that is the case, we will provide advance notice of planned outages.



Map: Area of construction work.

CURRENT AND UPCOMING WORKS

Albion Road and Finch Avenue West

- Dry utility relocation is ongoing at the intersection.
- Wet utility installation continues till the end of 2021, approximately
- Road widening continues till 2022, approximately.
- Retaining wall installation near Albion Mall will start later in 2021 and will last for two months, approximately.

Photo: Intersection of Finch Avenue West and Weston Road.



CURRENT AND UPCOMING WORKS

Traffic Changes from Albion Road to Martin Grove Road for Utility Work

- Traffic remains on the south side of Finch Avenue West.
- The north side of the road is closed till the end of 2021.
- At least one lane in each direction is maintained.



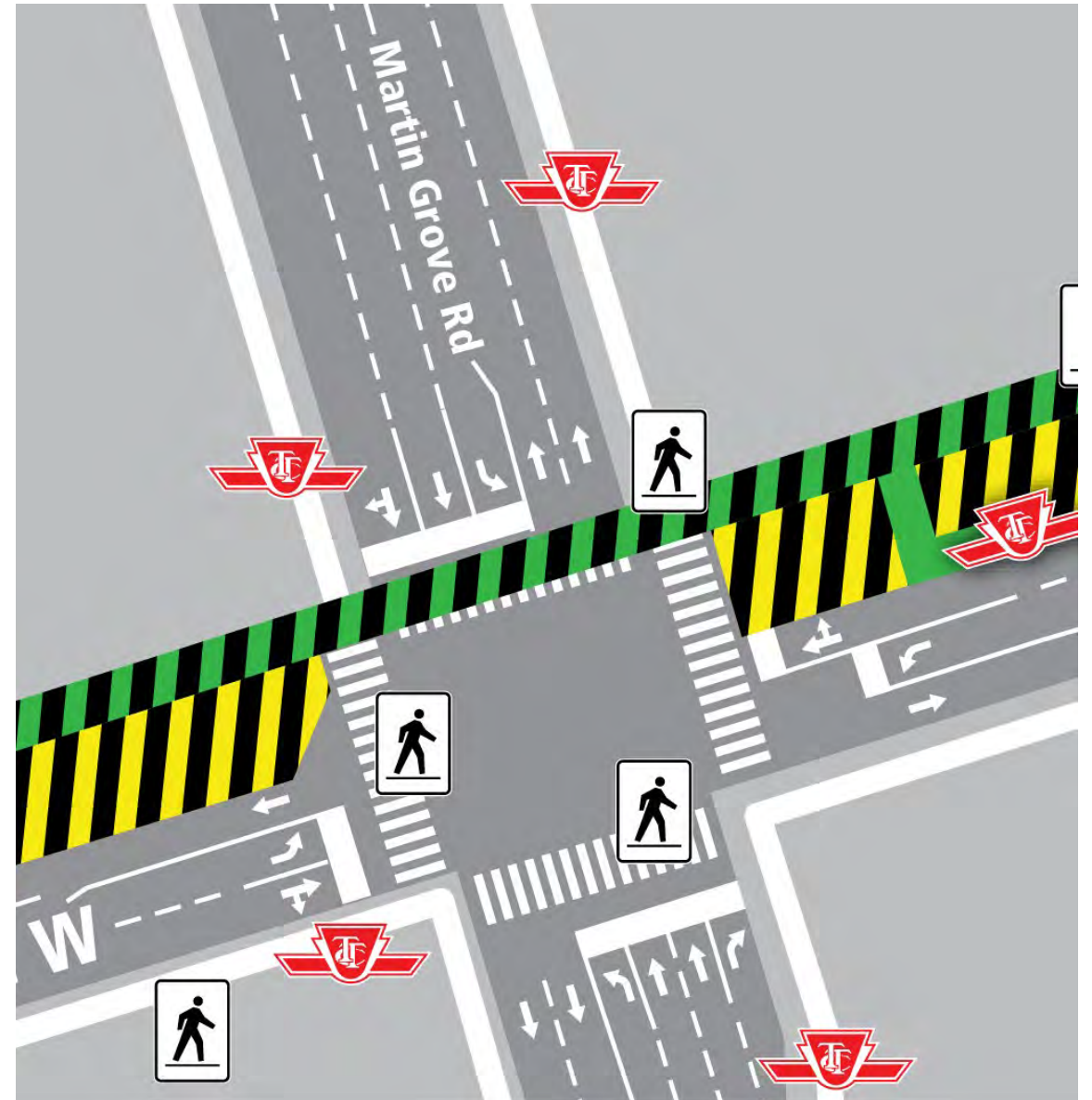
Map: Area of construction work.

CURRENT AND UPCOMING WORKS

Damascus Drive to Martin Grove Road - North widening and Guideway work

- The work is scheduled to start in October 2021 and will be completed in 8 months, approximately.
- North and South sidewalk will be maintained
- North-South and East-West crossings will be maintained

Map: Traffic configuration on Martin Grove and Finch Avenue West intersection.



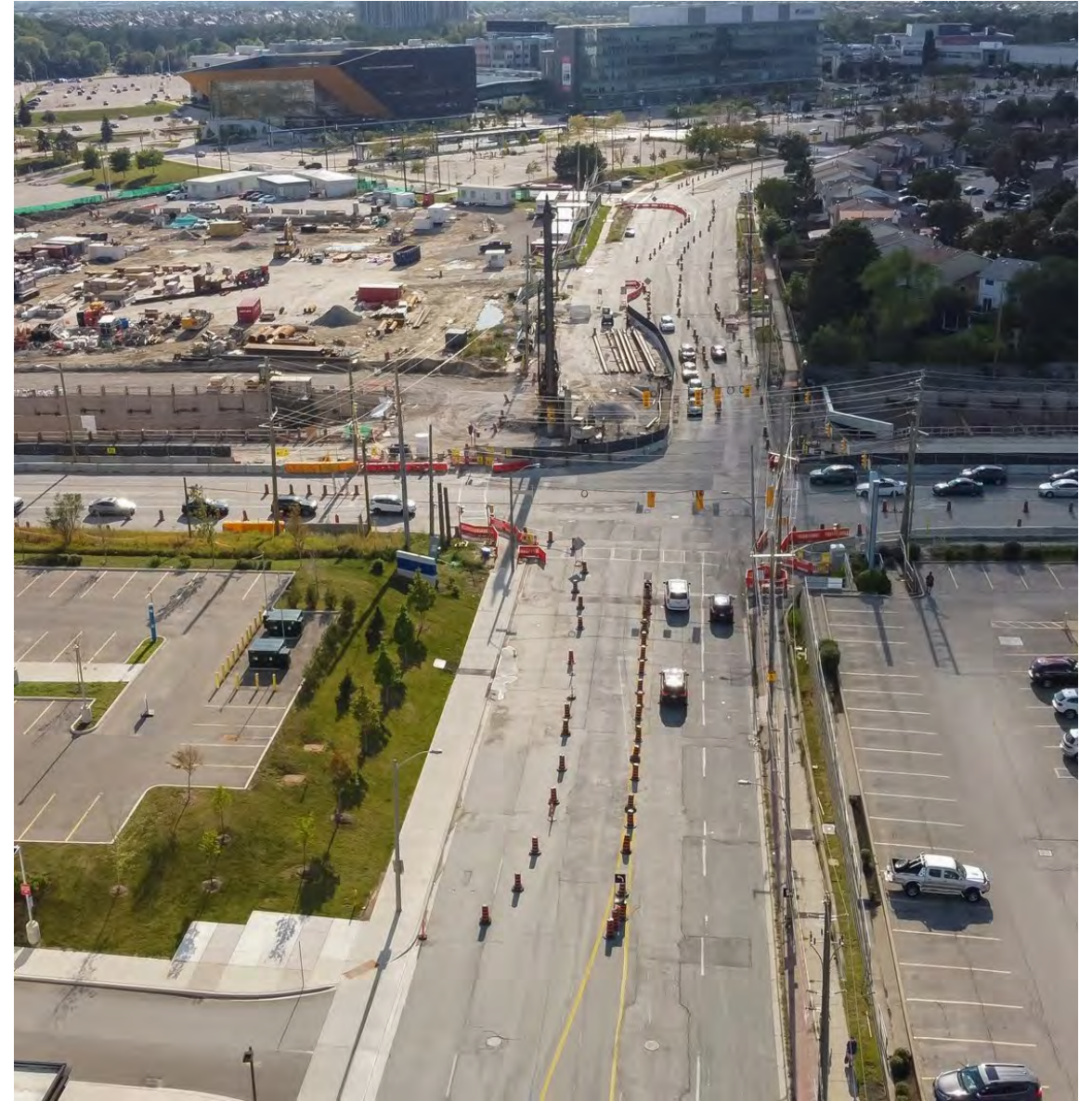
Humber College Stop and Highway 27

CURRENT WORKS

Future Humber College Stop and Portal

- Pile drilling at Humber College Blvd is scheduled to be finished early November 2021.
- Humber College Blvd has reduced lanes until the end of the year.
- Traffic is currently on the north side of the road.
- Relocation of hydro poles and underground cables continues at Humber College Boulevard from Highway 27 to Arboretum Boulevard is completed .

Photo: View west along Highway 27 and Humber College Blvd

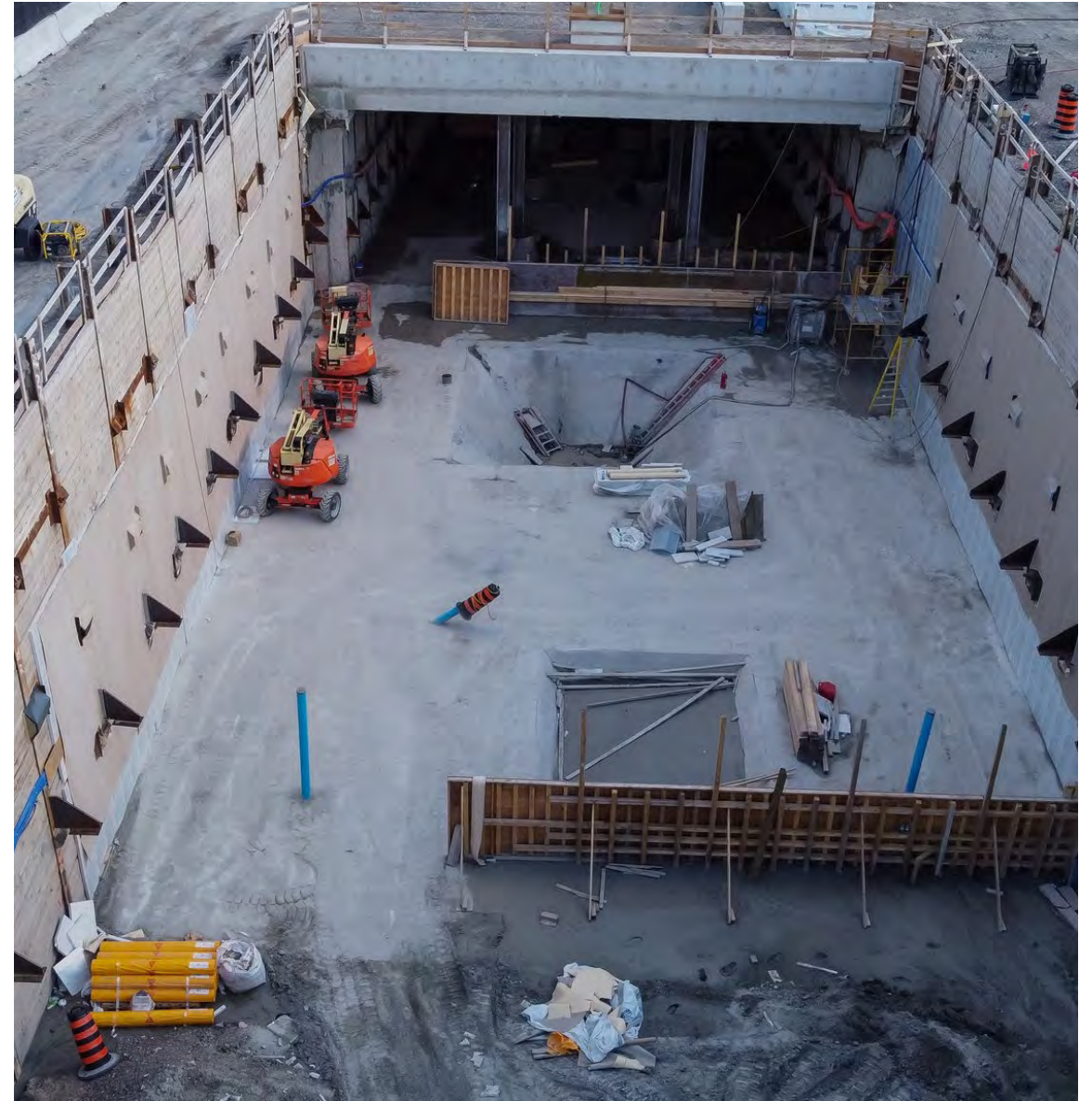


COMPLETED AND UPCOMING WORKS

Finch Avenue West and Highway 27

- The second base slab pour in the Station was done on September 17, 2021, three weeks ahead of the schedule.
- Traffic flip on Finch Avenue West and Hwy 27 will be done on the first week of October 2021.
- Track slab construction starts later in the fall of 2021
- Mining under the roof slab is ongoing till January 2022
- The construction of the track drainage is ongoing.

Photo: Inside Humber College Station portal.



Communications and Community Engagement

COMMUNICATIONS AND COMMUNITY ENGAGEMENT UPDATE

In progress

- School safety campaign
- Second vehicle delivery

Upcoming

- School presentations
- Virtual Open House - fall 2021
- Updates on LRV testing progress and OCS energization



Photos: School Safety Campaign and LRV arrival at MSF



Finch West Light Rail Transit Project

**School is back!
Stay alert and
drive safely.**



Stay safe during construction.
www.metrolinx.com/finchwestlrt

METROLINX

KEEPING YOU INFORMED

Communication Methods

- Construction Liaison Committee (CLC)
- Emails to Mailing List
- Weekly E-Newsletter
- Monthly internal newsletter
- Internet/intranet refresh
- Construction Notices
- Project Website Updates
- Frequently Asked Questions (FAQ)
- Sharing through elected officials (e-newsletter)
- Metrolinx News Blog
- Wayfinding and Signage

Engagement Tools

- Virtual Open House via Metrolinx Engage
- Working or Advisory Group Meetings
- Business Liaison
- Public Meetings (on hold)
- Technical Tours (on hold)
- Pop ups (on hold)
- Special events (on hold)



Stay Informed: metrolinx.com/finchwestlrt and sign up to our Toronto West e-newsletter

Questions or comments: TorontoWest@metrolinx.com, @FinchWestLRT, 416-202-6500

Roundtable Discussion

NEXT CLC MEETING

CLC meeting will be held on the first Tuesday of every month.

Next meeting will be on November 2, 2021, via Microsoft Teams.



Thank you and Stay Safe

