

Finch West LRT Project Construction Liaison Committee (CLC)

Tuesday, January 11, 2022



AGENDA

- **Welcome and Introductions**
- **Safety Moment**
- **Land Acknowledgement**
- **Review of Minutes and Action Items**
- **Major Milestones**
- **Work Update**
 - Finch West Station
 - Utilities and Roadwork
 - Maintenance and Storage Facility
 - Hwy 400 Bridge
 - Humber College Stop
- **Communications and Community Engagement**
- **Roundtable discussion**



Safety Moment

Land Acknowledgement

METROLINX LAND ACKNOWLEDGEMENT

Metrolinx acknowledges that it operates on the traditional territory of Indigenous Peoples including the Anishnabeg, the Haudenosaunee and the Wendat peoples.

In particular, we acknowledge that the Finch West LRT is occurring on lands covered by Treaty 13, 1805 with the Mississaugas of the Credit First Nation and the Fort Albany/Nanfan Treaty of 1701 signed with the Haudenosaunee.

Metrolinx is committed to building meaningful relationships with Indigenous Peoples, and to working towards meaningful reconciliation with the original caretakers of this land.

Review of Previous December 7, 2021 CLC Minutes and Action Items

REVIEW OF PREVIOUS CLC MEETING

- No action items



WHAT WE ARE DOING IN 2022

Location	Key Activities
Finch West Station, Keele-Finch intersection	<ul style="list-style-type: none">• Start of structural work for station and build-up the Finch West station, platforms and portals• Connection to Line 1 subway station and installation of Traction Power Substation• Mechanical, electrical and plumbing work
Construction across Finch Avenue West	<ul style="list-style-type: none">• Continue with dry and wet utility relocation works, road widening, and paving works• Assemble and install 6 Traction Power Substations• Build guideway and install rail on the mainline in non burn-in areas
Maintenance and Storage Facility (MSF)	<ul style="list-style-type: none">• Complete MSF building in spring/summer• LRV testing continues
Highway 400 Bridge	<ul style="list-style-type: none">• Ramp improvement work at Highway 400 and at the Finch Avenue West interchange• Completion of multi use tunnel• Handover the completed works to Ministry of Transportation
Humber College Stop and Highway 27	<ul style="list-style-type: none">• Concrete work within stop, building structure for Humber College stop• Finish portal structural work and handover to track team

**An Important Milestone:
Traffic Split Between
Romfield Lane - Pelican Gate**

TRAFFIC SPLIT @ FINCH AVENUE WEST & ROMFIELD DRIVE



Finch West Station Update

CURRENT WORKS

Finch West Station, Finch Avenue West at Keele Street

1. Tie back and micro piles drilling are complete.
2. Excavation to concourse level and installation of concourse slab connection brackets is started.
3. Rebar placing, formwork, platform slab work for the Main Entrance Box.
4. Rebar placing & concrete pour in platform slab and walls, for the west portal.
5. Sidewalks at Keele are accessible
6. South sidewalk at Finch is accessible

Photo: Keele and Finch station and portals.



CONSTRUCTION PROGRESS PHOTO



Photo: Aerial view west, Finch and Keele station portal and stop excavation and construction work.

Keele Street to Weston Road Corridor Work

TRAFFIC SPLIT @ FINCH AVENUE WEST AND ROMFIELD DRIVE

- Crews are doing road work, boulevard, guideway and street lighting Installation
- The work has started at the end of 2021 and will last eight months, approximately.
- Paid Duty Officer, flaggers, and detour signs to direct traffic, if needed.
- Community members will be notified of any significant construction related impacts, separately

Photo: View of the intersection of Finch Avenue West and Romfield Lane



CURRENT AND UPCOMING WORKS ACROSS FINCH AVENUE WEST

From Keele Street to Jane Street

- Minor curbing continues in specific locations
- Relocation of telecommunication and hydro (duct banks, cables, and new chambers) along Finch Avenue West is almost done
- Installation of OCS bases and Poles is almost completed, and wire stringing is going on in specific locations
- Track Slab between Sentinel and Elena Dr. is almost done between Sentinel and Elena Dr.

Photo: View of the intersection of Finch Avenue West and Jane Street



Maintenance and Storage Facility

ONGOING ACTIVITIES

In Progress:

- LRT equipment and Systems installation
- Final Landscaping
- Testing & commissioning

Photo: train at the MSF



MSF SITE



Photo: Aerial view of Maintenance and Storage Facility.

CURRENT AND UPCOMING WORKS ACROSS FINCH AVENUE WEST

From Jane Street to Norfinch Drive/Oakdale Road

- Road and wet utility works almost completed
- Duct bank and Track Slab is completed
- York Gate Boulevard was re-opened in November 2021
- Minor construction activities with minimal impact on the traffic might be done in specific locations

Photo: North view of Finch Avenue West and Norfinch Drive .

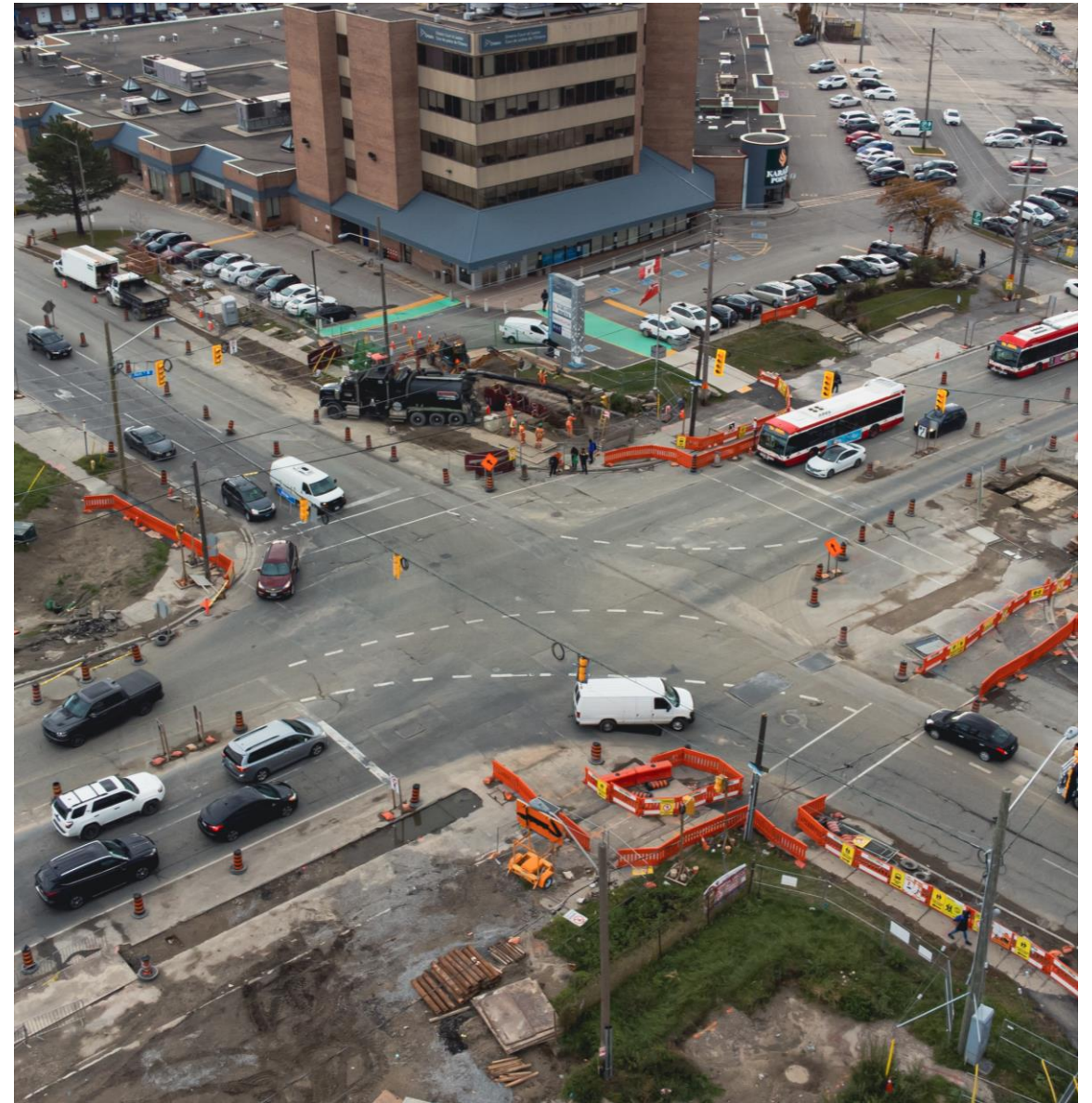


CURRENT AND UPCOMING WORKS ACROSS FINCH AVENUE WEST

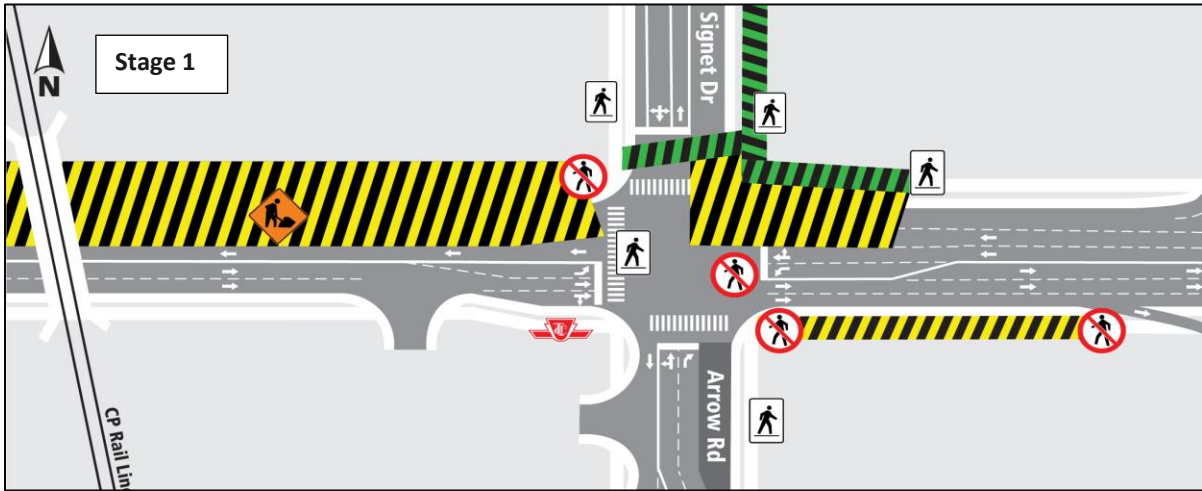
From Norfinch Drive/Oakdale Road to Signet Drive/Arrow Road

- Watermain installation at Norfinch Drive and Finch Avenue West is ongoing.
- Watermain installation at Signet Drive is ongoing.
- Hydro and telecommunications relocations continue both sides of Finch Avenue West
- Underground electrical work underway from the CP Bridge to Signet Drive.

Photo: View of the intersection of Finch Avenue West and Norfinch Drive looking west.



FOUR STAGES OF TRAFFIC CONFIGURATION, SIGNET DRIVE/ARROW ROAD



Highway 400 Bridge Rehabilitation Update

CURRENT AND UPCOMING WORKS

- Road and guideway work is underway
- Wet utilities installation is ongoing
- Multi Use Purpose (MUP) tunnel work will resume in spring 2022
- Expect **periodic** ramp closures
- Occasional night work occurs **from 6 pm to 7 am**. Additional notices will be provided as needed.



Map: 400 ramp work.

Weston Road to Highway 27

WESTON ROAD AND FINCH AVENUE WEST INTERSECTION

Ongoing and Upcoming Works

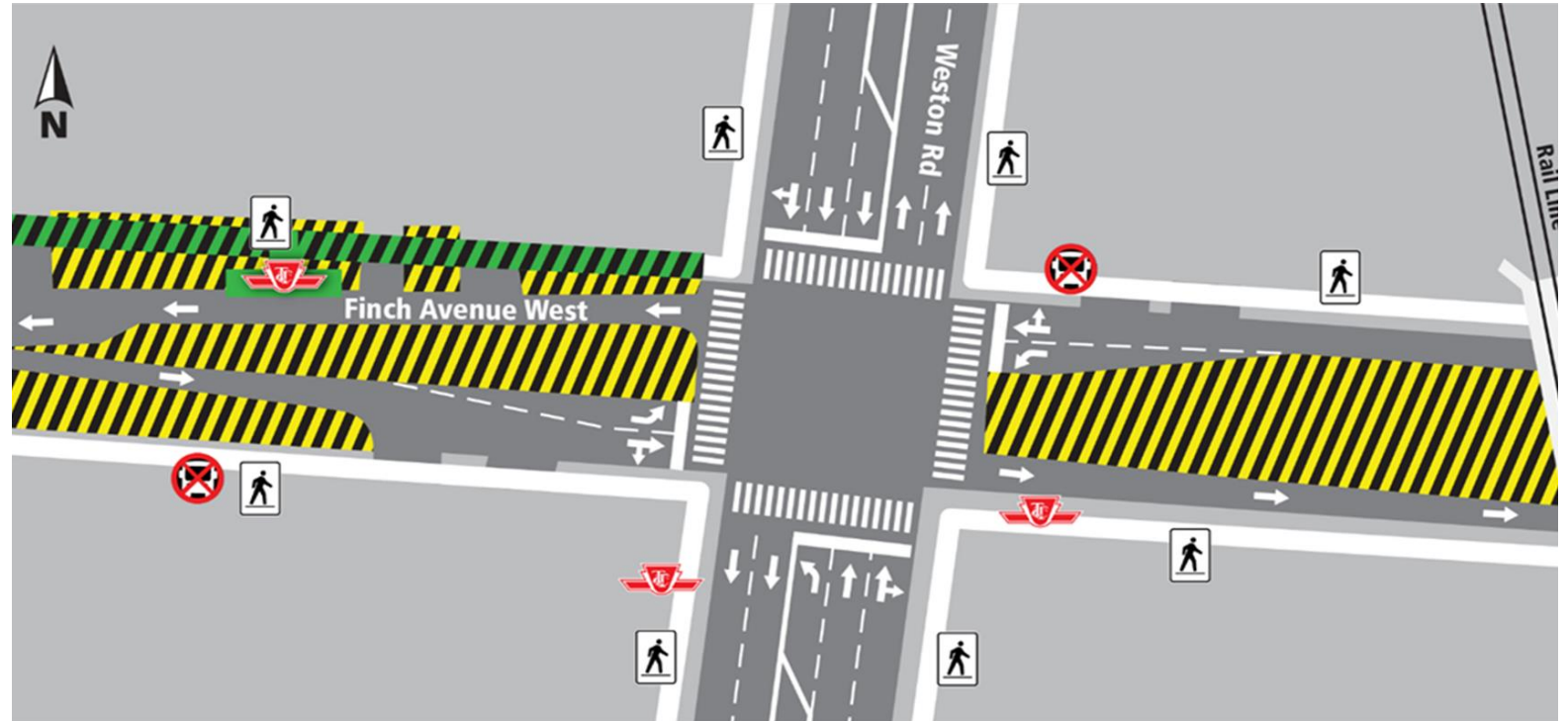
- Watermain installation on the north side of the intersection will continue in January 2022.
- Work on the watermain west of Weston on the north side is completed.
- Storm and sanitary sewer work on the south side will take place after watermain work is completed. It will take several months to complete.

Photo: View west at Finch Avenue West and Weston Road.



ROADWORKS AND RETAINING WALL INSTALLATION BETWEEN SIGNET DRIVE AND WESTON ROAD.

- This traffic configuration will remain in place until May 2022.
- Bus stops will be relocated, if necessary
- There will be a Paid Duty Officer, flaggers, and detour signs to direct traffic, as needed.



Intersection of Finch Avenue West and Weston Road.

RETAINING WALL INSTALLATION NEAR FINCHDALE PLAZA

- Retaining wall installation near Finchdale Plaza continues and is expected to be finished in May 2022
- Motorists and pedestrians should be aware of and follow traffic/pedestrian signage and flag persons
- Community members will be notified of water shut-off and power outages, if any, separately



Map: Area of construction work. Finch Avenue West looking west.

HUMBER RIVER BRIDGE REHABILITATION - FINCH AND ISLINGTON AVENUE INTERSECTION

- Ongoing since early April 2021 for 18 months, approximately. Zones 1 & 2 are almost completed.
- Work will continue in the north - east and south-west quadrants (3 & 4), starting mid-February 2022, approximately

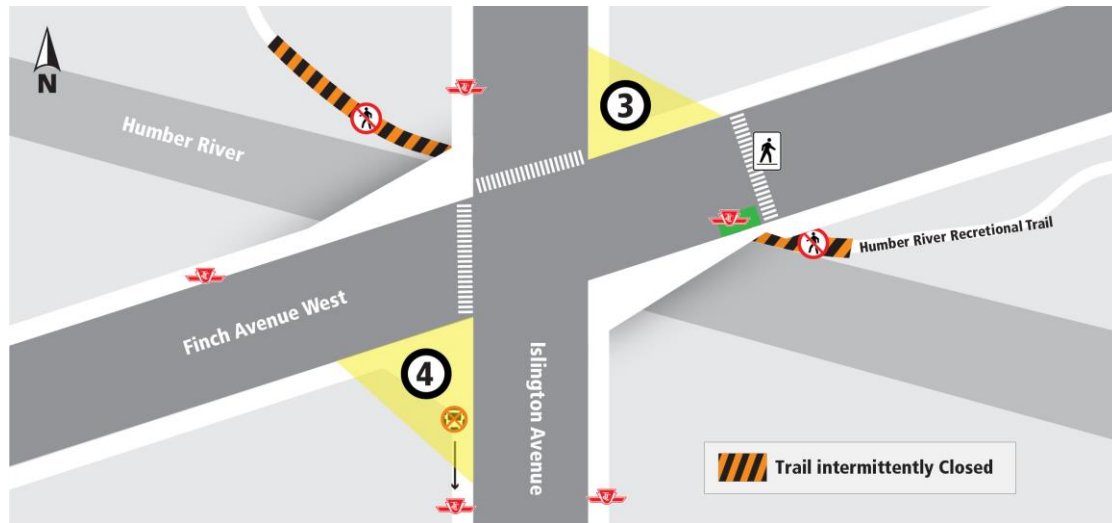


Photo: Aerial view Finch Avenue West and Islington Avenue.



HUMBER RIVER BRIDGE REHABILITATION CONTINUES.

- This traffic configuration will remain in place from mid-February until May 2022.
- Bus stops will be relocated, if necessary
- There will be a Paid Duty Officer, flaggers, and detour signs to direct traffic, as needed.



Intersection of Finch Avenue West and Islington Avenue.

WET AND DRY UTILITIES WORK FROM ISLINGTON AVENUE TO MILADY ROAD

- Wet and dry utilities work between Islington Ave. and Milady Road started in October 2021 and will continue until spring 2022
- North and south sidewalks will remain open.
- Community members will be notified of any significant construction related impacts, separately



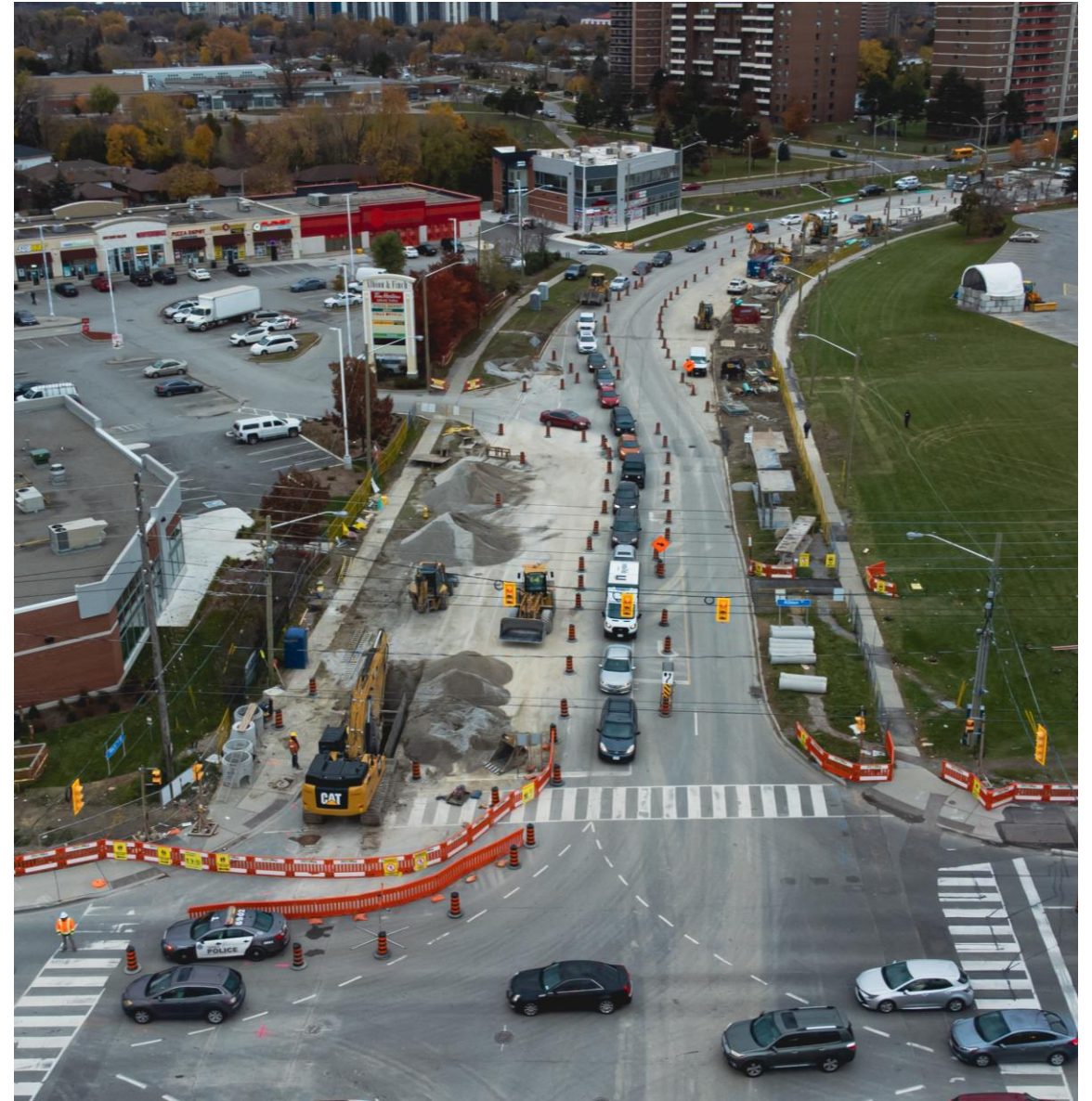
Intersection of Finch Avenue West and Milady Road looking west.

CURRENT AND UPCOMING WORKS

Albion Road and Finch Avenue West

- Dry utility relocation is ongoing at the intersection
- Wet utility installation continues until summer 2022, approximately
- Road widening continues until 2022, approximately
- Retaining wall installation near Albion Mall started late November 2021 and is scheduled to be finished in winter 2022, approximately.
- Community members will be notified of any significant construction related impacts, separately

Photo: Intersection of Finch Avenue West and Albion Road.



INTERSECTION CLOSURE AT ALBION ROAD AND FINCH AVENUE WEST

Traffic Changes at Albion Road to Finch Avenue West for Utility Work

- Storm and sewer relocation
- To safely perform the work across the intersection, crews intermittently close parts of the intersection.
- The work continues until spring 2022



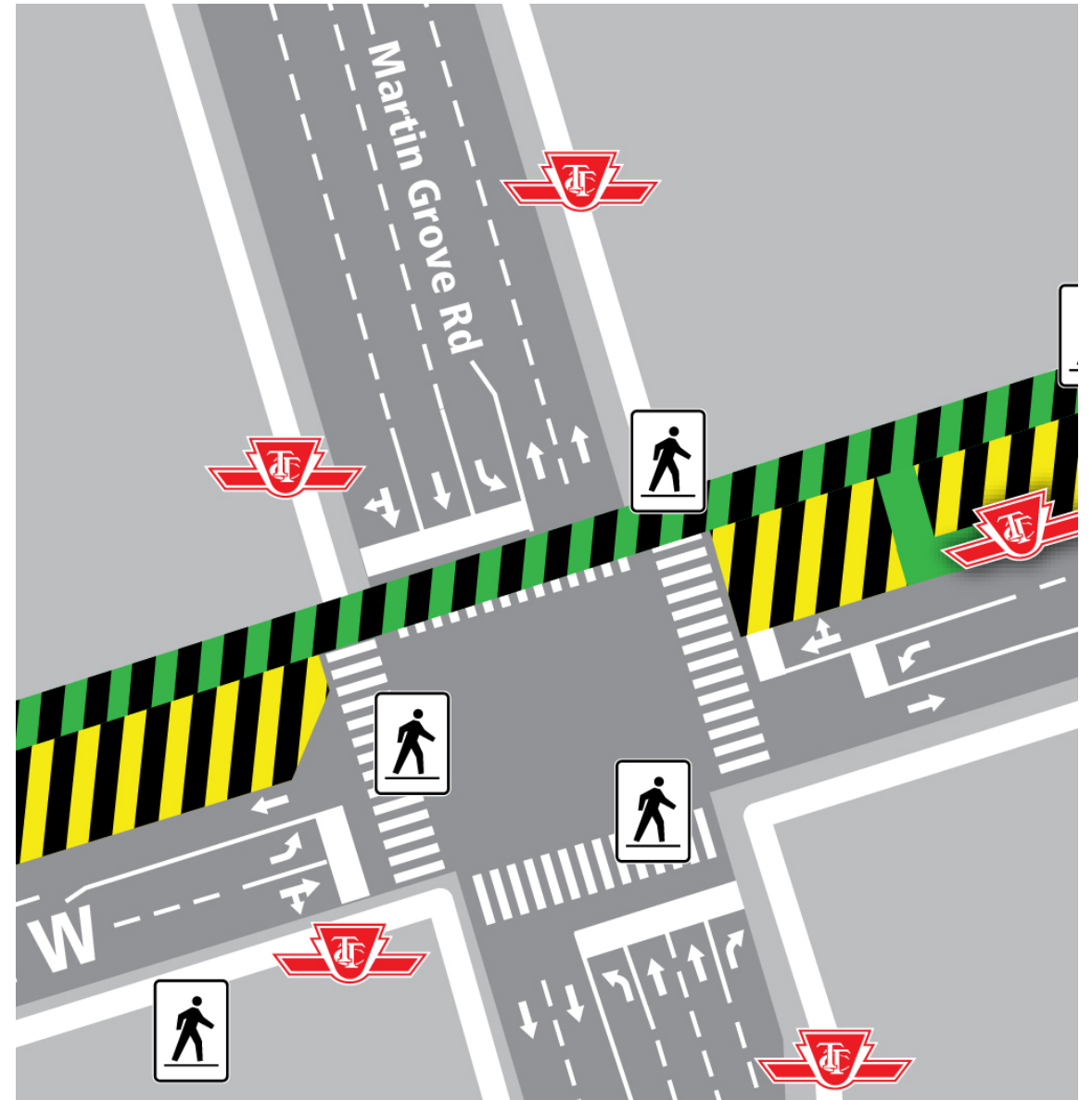
Map: Area of construction work.

CURRENT AND UPCOMING WORKS

Damascus Drive to Martin Grove Road - Road widening and Guideway work

- The work started in October 2021 and will be completed mid 2022, approximately
- North and South sidewalk will be opened
- North-South and East-West crossings will be opened
- Community members will be notified of any significant construction related impacts, separately

Map: Traffic configuration on Martin Grove and Finch Avenue West intersection.



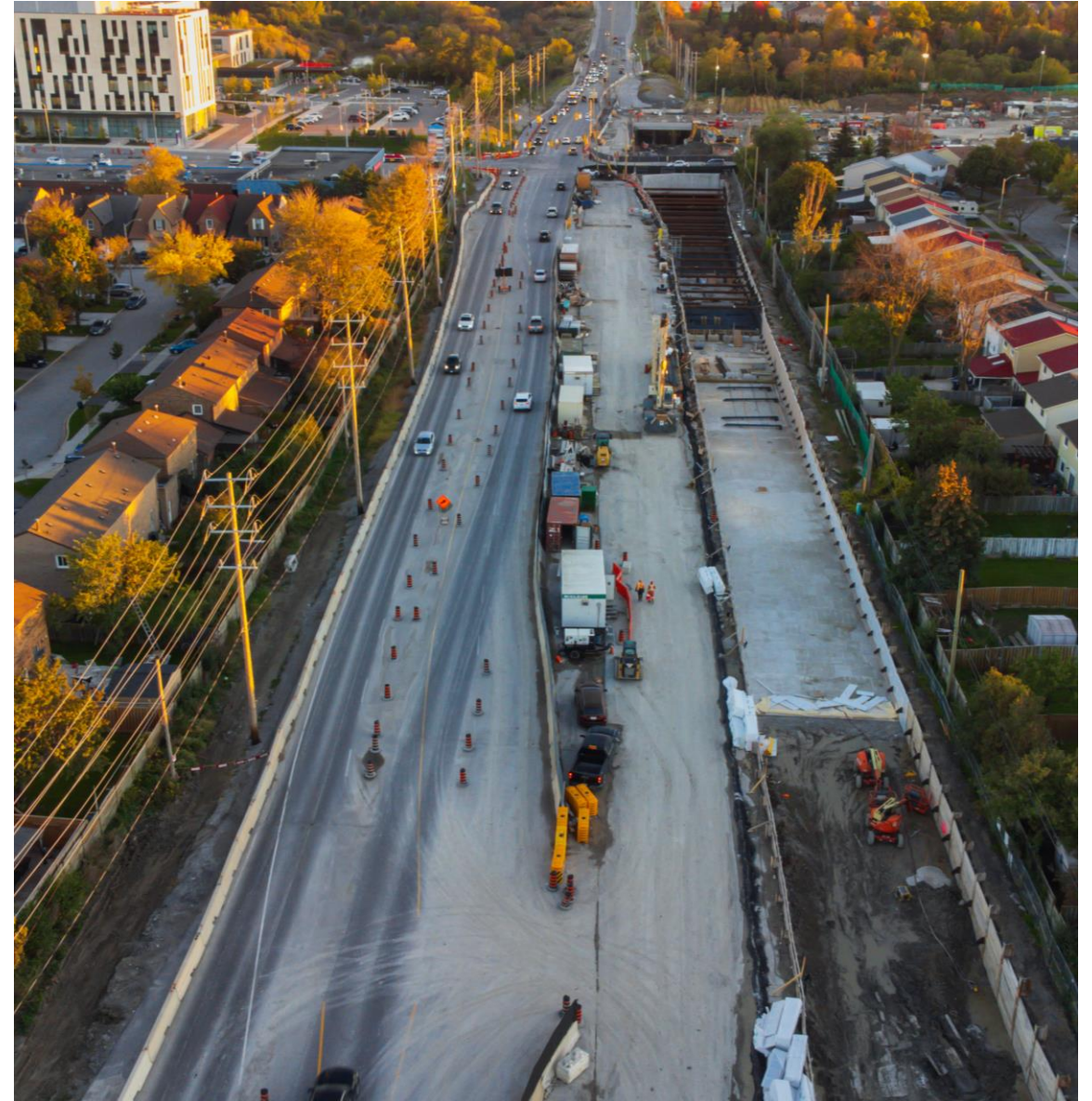
Humber College Stop and Highway 27

CURRENT WORKS

Future Humber College Stop and Portal

- Track slab construction started mid-November 2021 and is anticipated to be finished mid-January 2022
- Track installation has started at the end of 2021
- Portal excavation is ongoing and will be finished at the end of February 2022

Photo: Highway 27 and Humber College Blvd looking south.

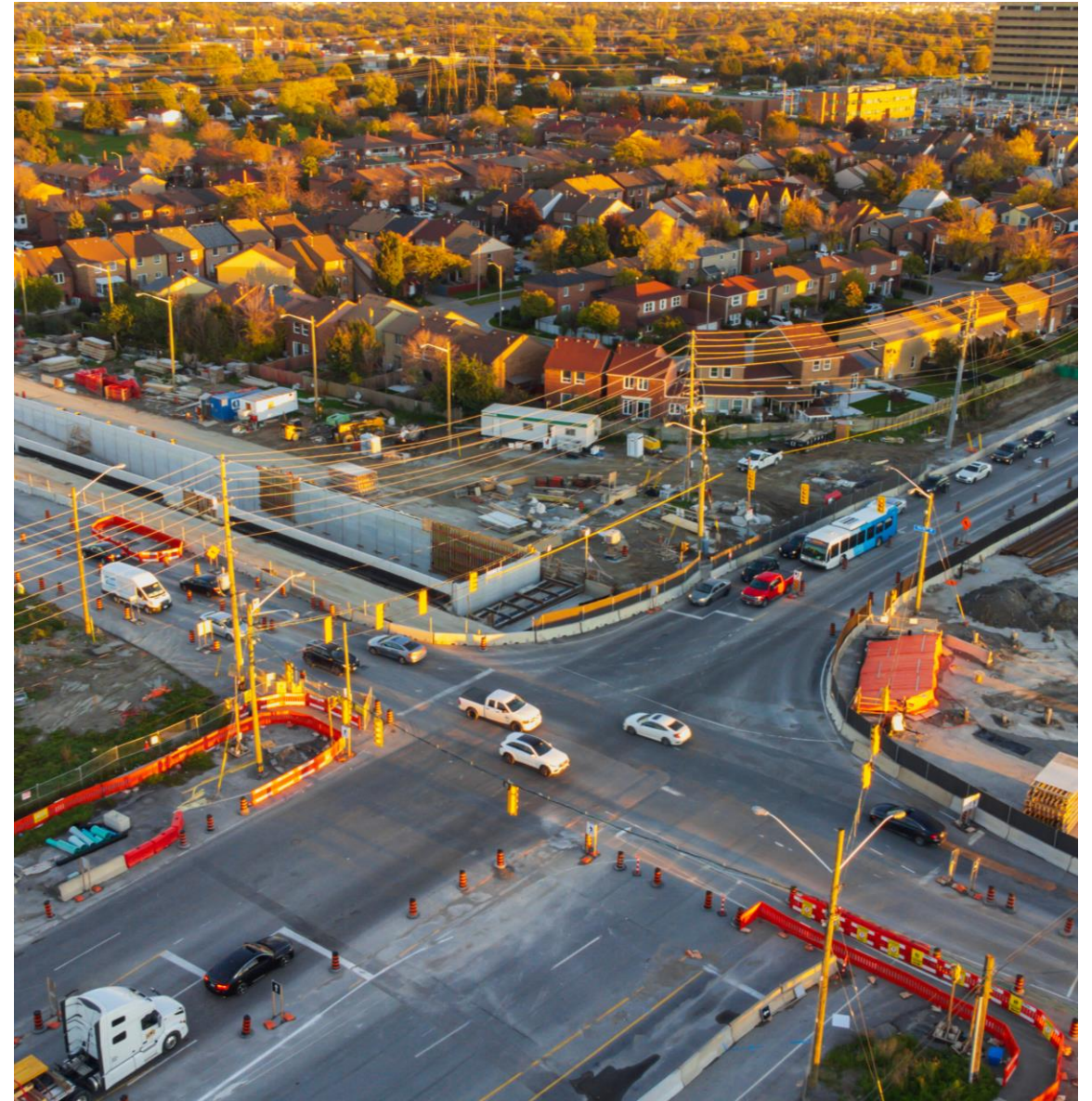


COMPLETED AND UPCOMING WORKS

Finch Avenue West and Highway 27

- Track slab construction started mid-November 2021
- Mining under Humber College Blvd. and HWY 27 roof slab is finished at the end of December 2021
- Excavation under the Finch Ave. West and HWY 27 roof slab is ongoing
- The construction of the track drainage is ongoing
- Concrete work continues

Photo: Aerial view of Highway 27 and Finch Avenue West



Communications and Community Engagement

COMMUNICATION AND COMMUNITY ENGAGEMENT

Updates

- *OCS Energization & Vehicle Testing*
 - *Print & digital ads for safety*
 - *Local signage*
- Elected officials, BIAs and stakeholder meetings

Upcoming

- Career presentations at secondary schools

Photos: Top row – ads for OCS energization. Bottom row – Light Rail Vehicle inside MSF

Finch West Light Rail Transit Project

CAUTION: Live Wires Overhead

The wires over the Finch West Light Rail Transit system are live. Stay away from dangerous high voltage wires. Cross only at marked intersections. Stay off the tracks and always obey traffic signals.



www.metrolinx.com/finchwestlrt

 **METROLINX**



KEEPING YOU INFORMED

Communication Methods

- Construction Liaison Committee (CLC)
- Emails to Mailing List
- Weekly E-Newsletter
- Construction Notices
- Project Website Updates
- Frequently Asked Questions (FAQ)
- Metrolinx News Blog
- Wayfinding and Signage
- Social media - Geo-targeting

Engagement Tools

- Virtual Open House via Metrolinx Engage
- Working or Advisory Group Meetings
- Business Liaison
- Public Meetings



Stay Informed: metrolinx.com/finchwestlrt and sign up to our Toronto West e-newsletter

Questions or comments: TorontoWest@metrolinx.com, @FinchWestLRT, 416-202-6500

Roundtable Discussion

NEXT CLC MEETING

CLC meeting will be held on the first Tuesday of every month

Next meeting will be on February 1, 2022,
via Microsoft Teams



Thank you and Stay Safe

