

# Finch West LRT Project Construction Liaison Committee (CLC)

Tuesday, December 7, 2021



# AGENDA

- **Welcome and Introductions**
- **Safety Moment**
- **Land Acknowledgement**
- **Review of Minutes and Action Items**
- **Major Milestones**
- **Work Update**
  - Finch West Station
  - Utilities and Roadwork
  - Maintenance and Storage Facility
  - Hwy 400 Bridge
  - Humber College Stop
- **Communications and Community Engagement**
- **Roundtable discussion**



**Safety Moment**

# **Land Acknowledgement**



# METROLINX LAND ACKNOWLEDGEMENT

Metrolinx acknowledges that it operates on the traditional territory of Indigenous Peoples including the Anishnabeg (Ah-nish-naw-bay), the Haudenosaunee (Hoe-den-oh-shown-ay) and the Wendat (When-dat) peoples.

In particular, we acknowledge that the Finch West LRT is occurring on lands covered by Treaty 13, 1805 with the Mississaugas of the Credit First Nation and the Fort Albany/Nanfan Treaty of 1701 signed with the Haudenosaunee.

Metrolinx is committed to building meaningful relationships with Indigenous Peoples, and to working towards meaningful reconciliation with the original caretakers of this land.

# **Review of Previous November 2, 2021 CLC Minutes and Action Items**

# REVIEW OF PREVIOUS CLC MEETING

- The diagram showing the Finch Ave West and Keele St intersection to be reviewed by Mosaic's Traffic team as it does not reflect the current situation on the ground - *Completed*.
- Traffic team to review the stop bars at the Finch Ave West and Keele St intersection as they appear to be too far back *Completed*
- Investigate closure of Highway 400 south-bound ramp - *Completed*
- Explore the feasibility of revising traffic configuration for Finch Ave W/Signet Drive/Arrow Rd .- *Completed*
- Explore placing a Paid Duty Officer at Finch Ave W/Signet Drive/Arrow Rd intersections during rush hour- *Completed*.



# WHAT WE ARE DOING IN 2022

Location	Key Activities
Finch West Station, Keele-Finch intersection	<ul style="list-style-type: none"><li>• Start of structural work for station and build-up the Finch West station, platforms and portals</li><li>• Connection to Line 1 subway station and installation of Traction Power Substation</li><li>• Mechanical, electrical and plumbing work</li></ul>
Construction across Finch Avenue West	<ul style="list-style-type: none"><li>• Continue with dry and wet utility relocation works, road widening, and paving works</li><li>• Assemble and install 6 Traction Power Substations</li><li>• Build guideway and install rail on the mainline in non burn-in areas</li></ul>
Maintenance and Storage Facility (MSF)	<ul style="list-style-type: none"><li>• Complete MSF building in spring/summer</li><li>• LRV testing continues</li></ul>
Highway 400 Bridge	<ul style="list-style-type: none"><li>• Ramp improvement work at Highway 400 and at the Finch Avenue West interchange</li><li>• Completion of multi use tunnel</li><li>• Handover the completed works to Ministry of Transportation</li></ul>
Humber College Stop and Highway 27	<ul style="list-style-type: none"><li>• Concrete work within stop, building structure for Humber College stop</li><li>• Finish portal structural work and handover to track team</li></ul>



# **An Important Milestone: Second LRV Arrival**

## SECOND LRV @ MSF



# **Finch West Station Update**

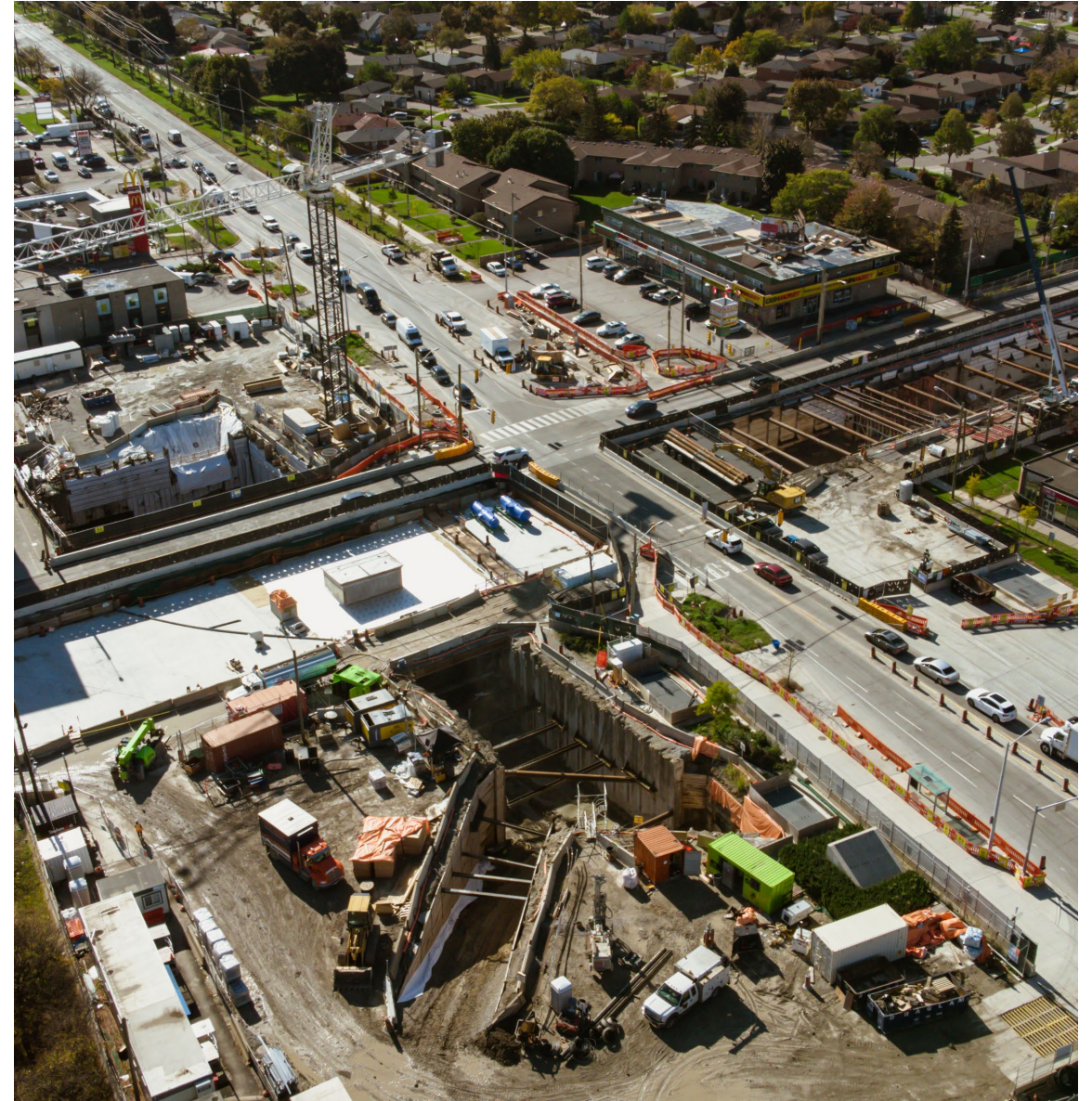


# CURRENT WORKS

## Finch West Station, Finch Avenue West at Keele Street

- Rebar placing, formwork, platform slab work for the main entrance.
- Tie back and micro piles drilling, installation of structural brackets, excavation for the main box.
- Rebar placing & concrete pour in platform slab and walls, for the west portal.
- Sidewalks at Keele are accessible
- South sidewalk at Finch is accessible

*Photo: Keele and Finch station and portals.*





# CONSTRUCTION PROGRESS PHOTO



*Photo: Aerial view west, Finch and Keele station portal and stop excavation and construction work.*



# **Keele Street to Weston Road Corridor Work**

# CURRENT AND UPCOMING WORKS ACROSS FINCH AVENUE WEST

## From Keele Street to Jane Street

- Road widening and paving continues
- Relocation of telecommunication and hydro (duct banks, cables, and new chambers) along Finch Avenue West is almost done
- Installation of bases and poles for Overhead Catenary System (OCS) continues
- Track Slab between Sentinel and Elena Dr. is completed.
- Rail installation is ongoing in different locations

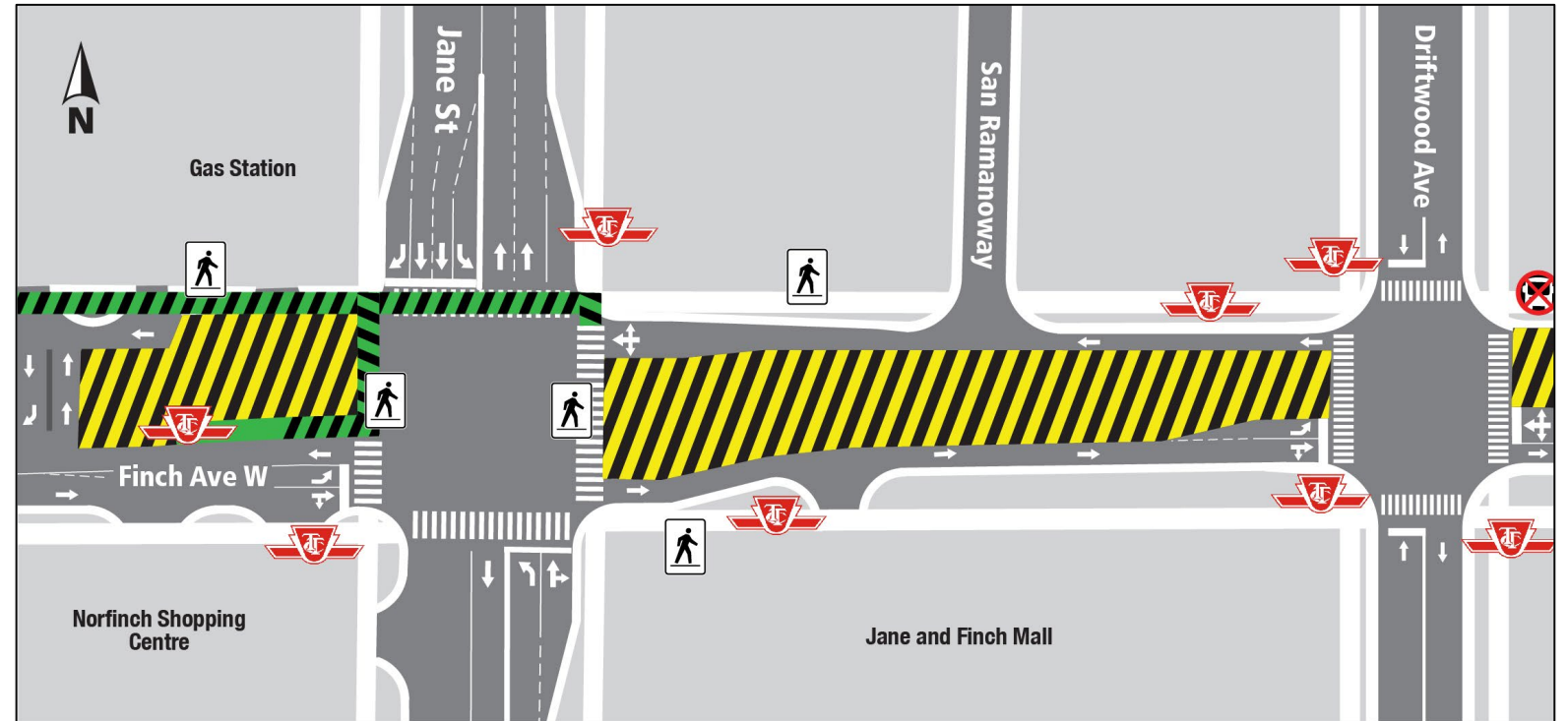
*Photo: View of the intersection of Finch Avenue West and Jane Street*



# TRAFFIC STAGING IN THE FINCH/JANE AREA

## From Driftwood Avenue to Jane Street

- Final median works including median, and curbs has started this fall
- Westbound left-turn lane open at Jane intersection
- The lanes going east/west will be positioned adjacent to the guideway in the center
- It is planned to have 2 lanes EB & 2 lanes WB between Jane and Romfield



*Map: Traffic configuration at Jane street and Finch Ave. intersection.*

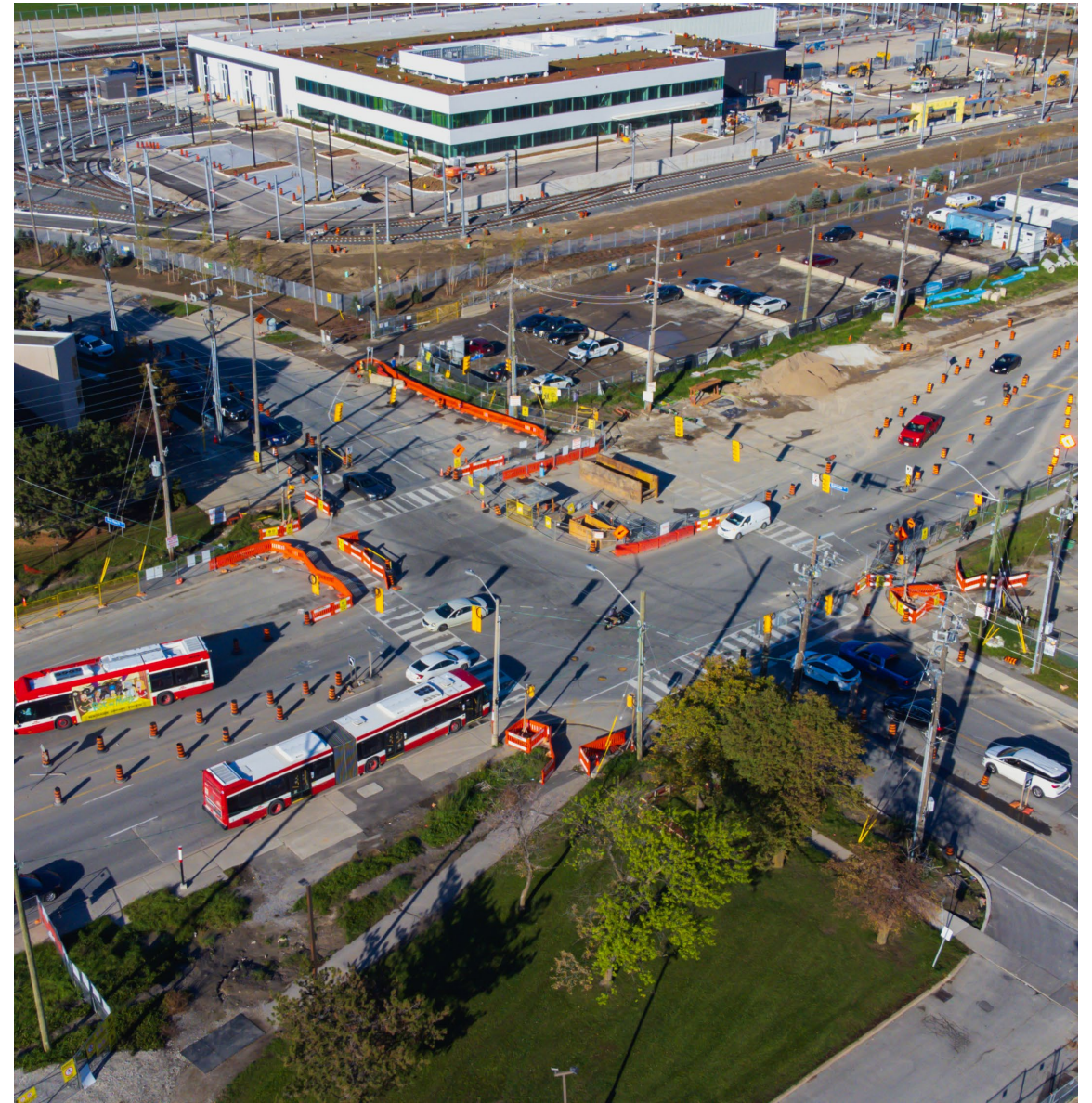


# CURRENT AND UPCOMING WORKS ACROSS FINCH AVENUE WEST

## From Jane Street to Norfinch Drive/Oakdale Road

- Track Slab concrete pour is completed up to Pelican Drive
- Rail installation at York Gate Boulevard was completed in November 2021
- Road and utility works continues
- York Gate Boulevard was re-opened in November 2021

*Photo: North view of Finch Avenue West and York Gate Boulevard.*



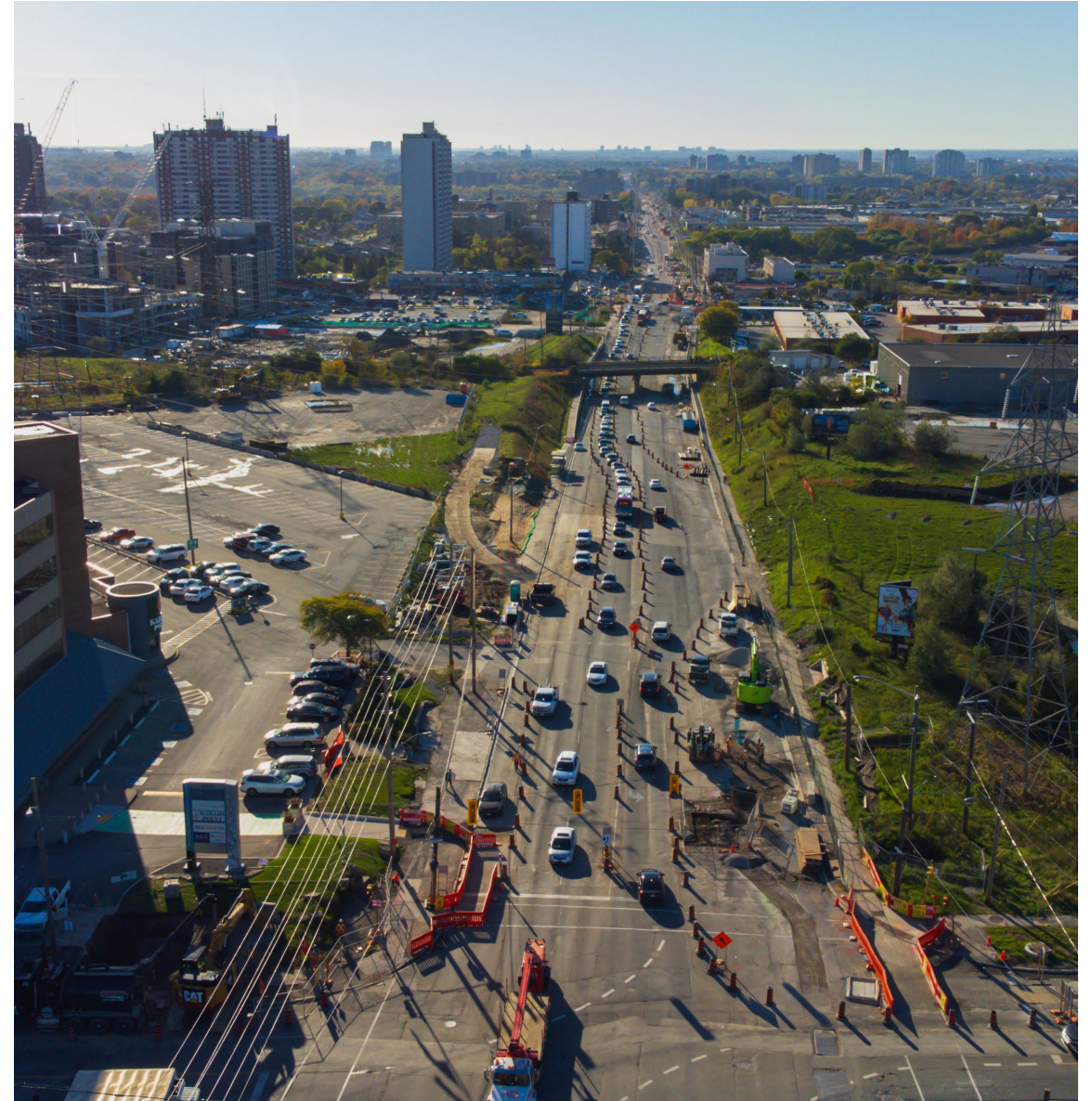


# CURRENT AND UPCOMING WORKS ACROSS FINCH AVENUE WEST

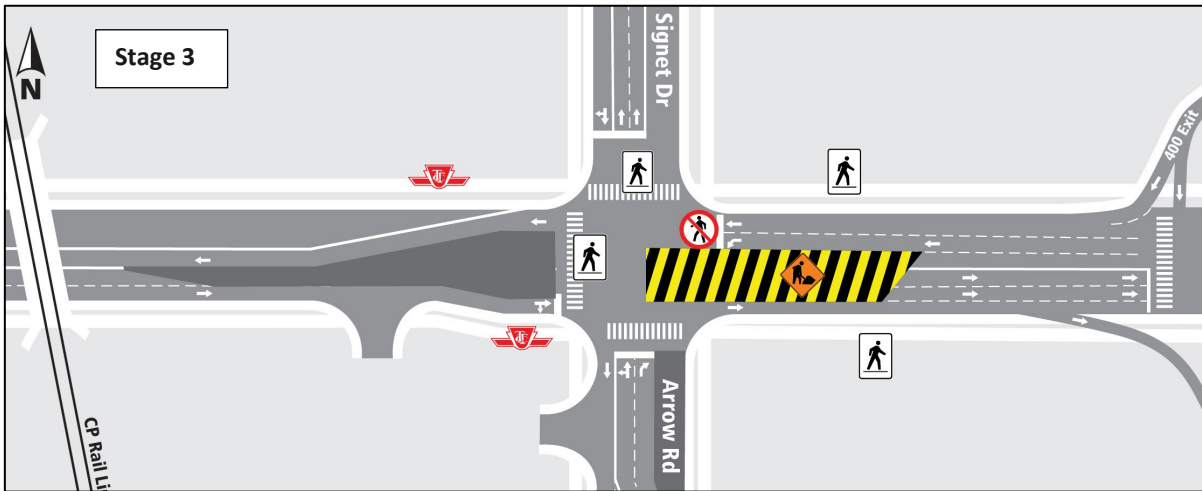
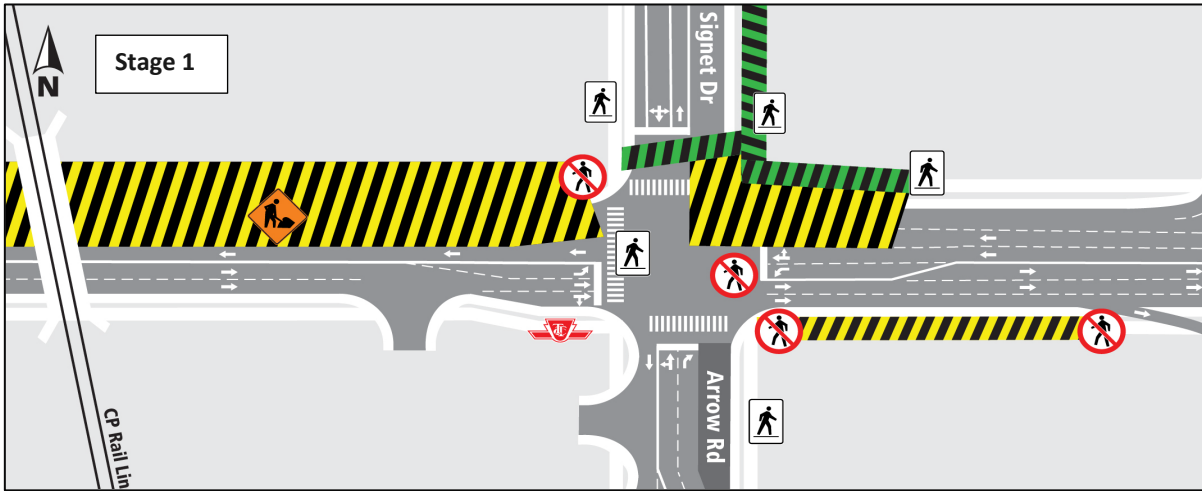
## From Norfinch Drive/Oakdale Road to Signet Drive/Arrow Road

- Watermain installation at Norfinch Drive and Finch Avenue West is ongoing.
- Watermain installation at Signet Drive is ongoing.
- Hydro and telecommunications relocations continue both sides of Finch Avenue West
- Underground electrical work underway from the CP Bridge to Signet Drive.

*Photo: View of the intersection of Finch Avenue West and Norfinch Drive looking west.*



# FOUR STAGES OF TRAFFIC CONFIGURATION, SIGNET DRIVE/ARROW ROAD



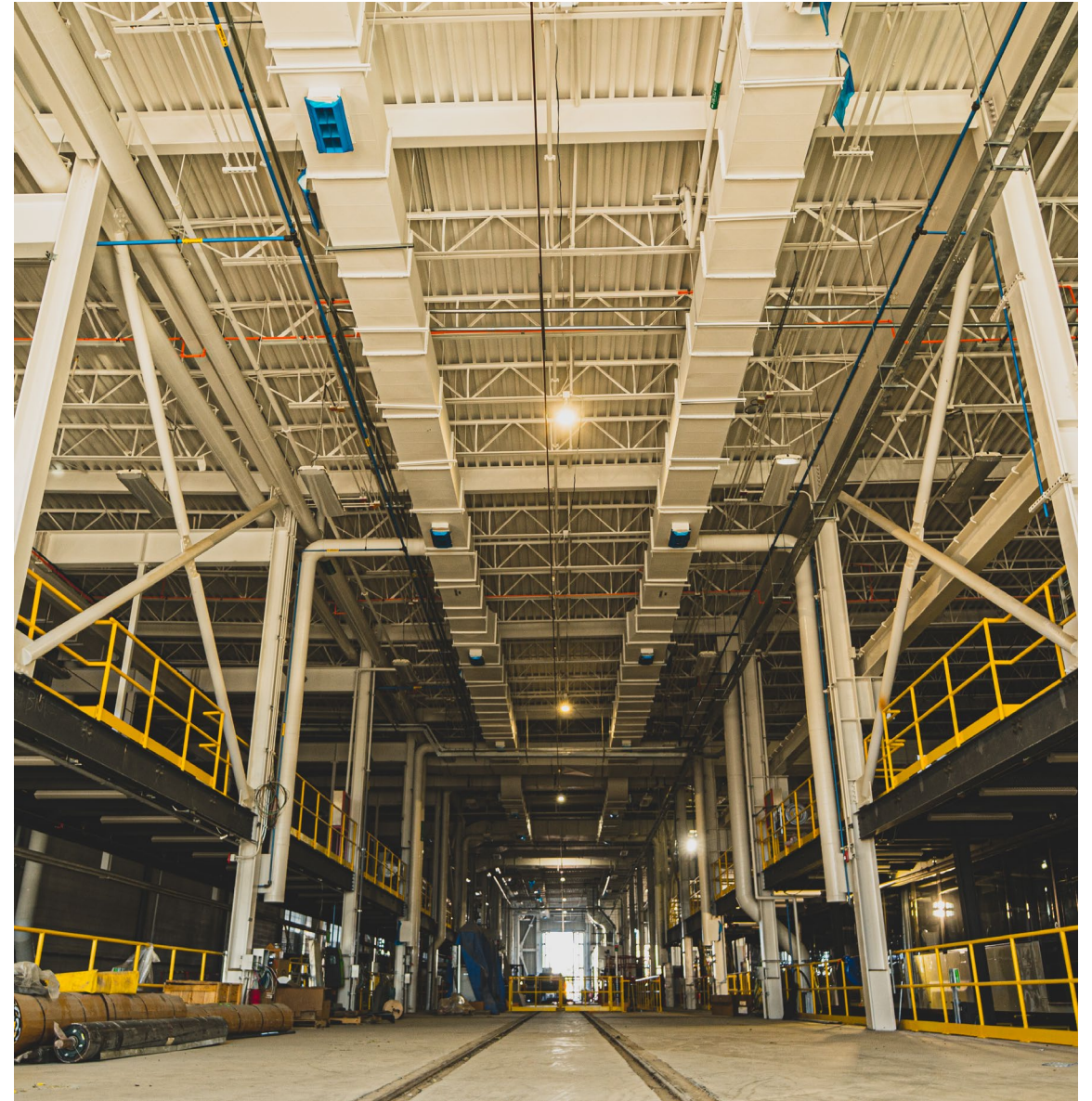
# **Maintenance and Storage Facility**



# CONSTRUCTION PROGRESS

- Completed:
- Mechanical, electrical and plumbing installations
- Fire Protection
- Building Envelope
- Floor finishes
- Paint finishes
- Parking lot curbs
- Parking lot asphalt base coat
- Green Roof
- In Progress:
- LRT equipment installation
- Landscaping
- Testing & commissioning

*Photo: Aerial view of Maintenance and Storage Facility.*





# MSF SITE



*Photo: Aerial view of Maintenance and Storage Facility.*



# **Highway 400 Bridge Rehabilitation Update**

# CURRENT AND UPCOMING WORKS

- Road and guideway work is underway
- Wet utilities installation is ongoing
- Multi Use Purpose (MUP) tunnel work continues
- Expect **periodic** ramp closures
- Occasional night work occurs **from 6 pm to 7 am**. Additional notices will be provided



*Map: 400 ramp work.*



# CONSTRUCTION PROGRESS PHOTO, HIGHWAY 400



*Photo: Aerial view looking east, Highway 400 and Finch Avenue West.*



# **Weston Road to Highway 27**

# WESTON ROAD AND FINCH AVENUE WEST INTERSECTION

## Ongoing and Upcoming Works

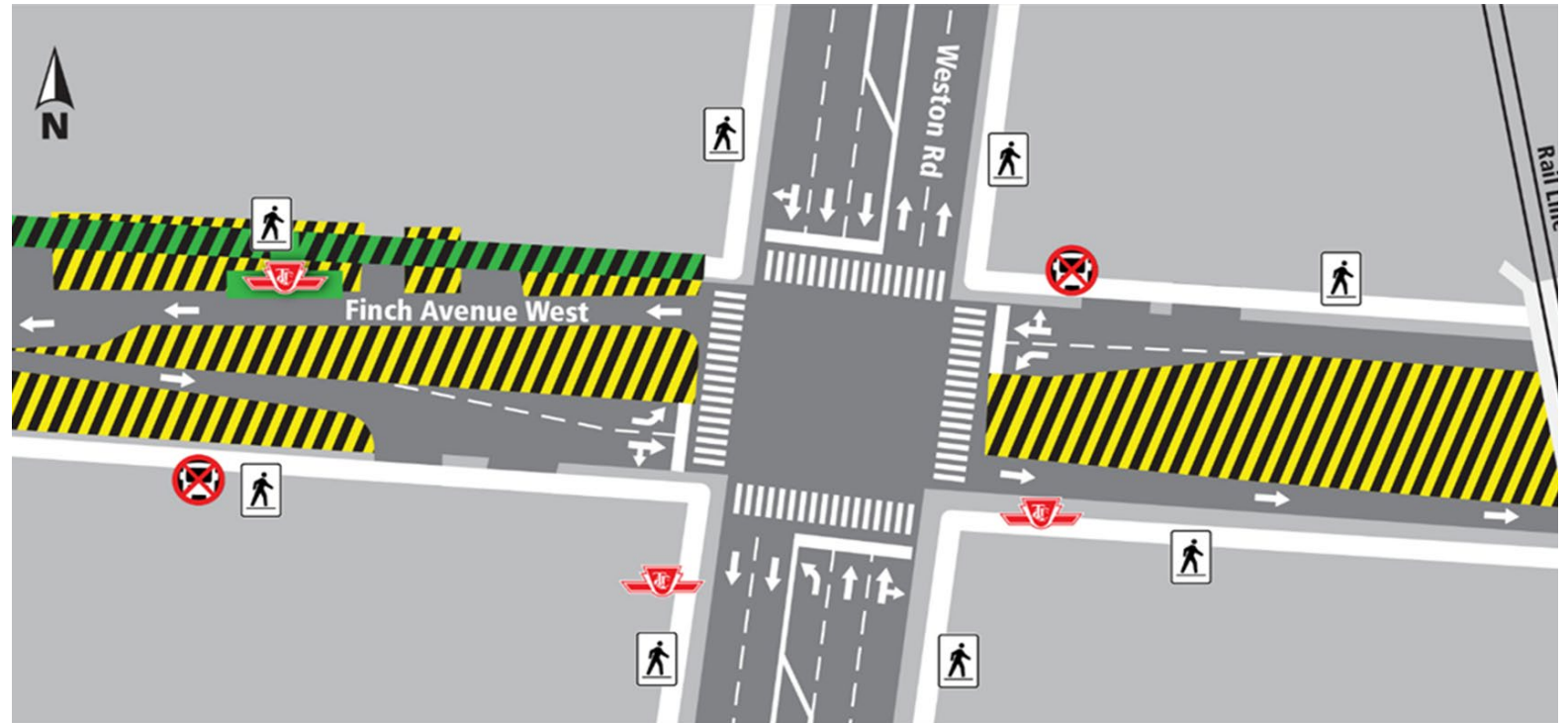
- Watermain installation on the north side of the intersection will resume in January 2022.
- Work on the watermain west of Weston on the north side is completed.
- Storm and sanitary sewer work on the south side will take place after watermain work is completed. It will take several months to complete.

*Photo: View west at Finch Avenue West and Weston Road.*



# ROADWORKS AND RETAINING WALL INSTALLATION BETWEEN SIGNET DRIVE AND WESTON ROAD

- This traffic configuration will remain in place until May 2022
- Bus stops will be relocated, if necessary
- There will be a Paid Duty Officer, flaggers, and detour signs to direct traffic, as needed.



*Intersection of Finch Avenue West and Signet Road.*



# RETAINING WALL INSTALLATION NEAR FINCHDALE PLAZA

- Retaining wall installation near Finchdale plaza continues and is expected to be finished in May 2022
- Motorists and pedestrians should be aware of and follow traffic/pedestrian signage and flag persons
- Community members will be notified of water shut-off and power outages, if any, separately

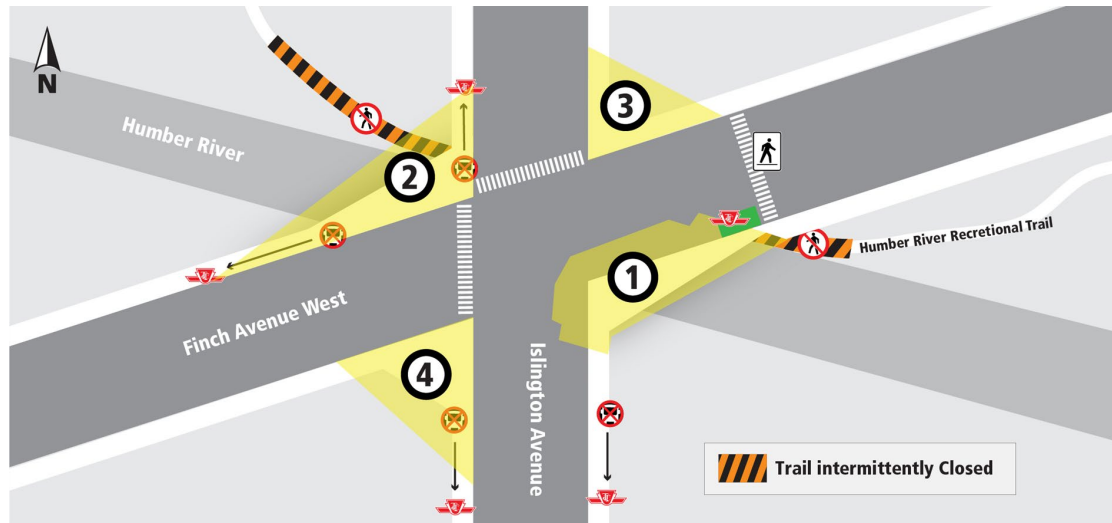


*Map: Area of construction work. Finch Avenue West looking west.*

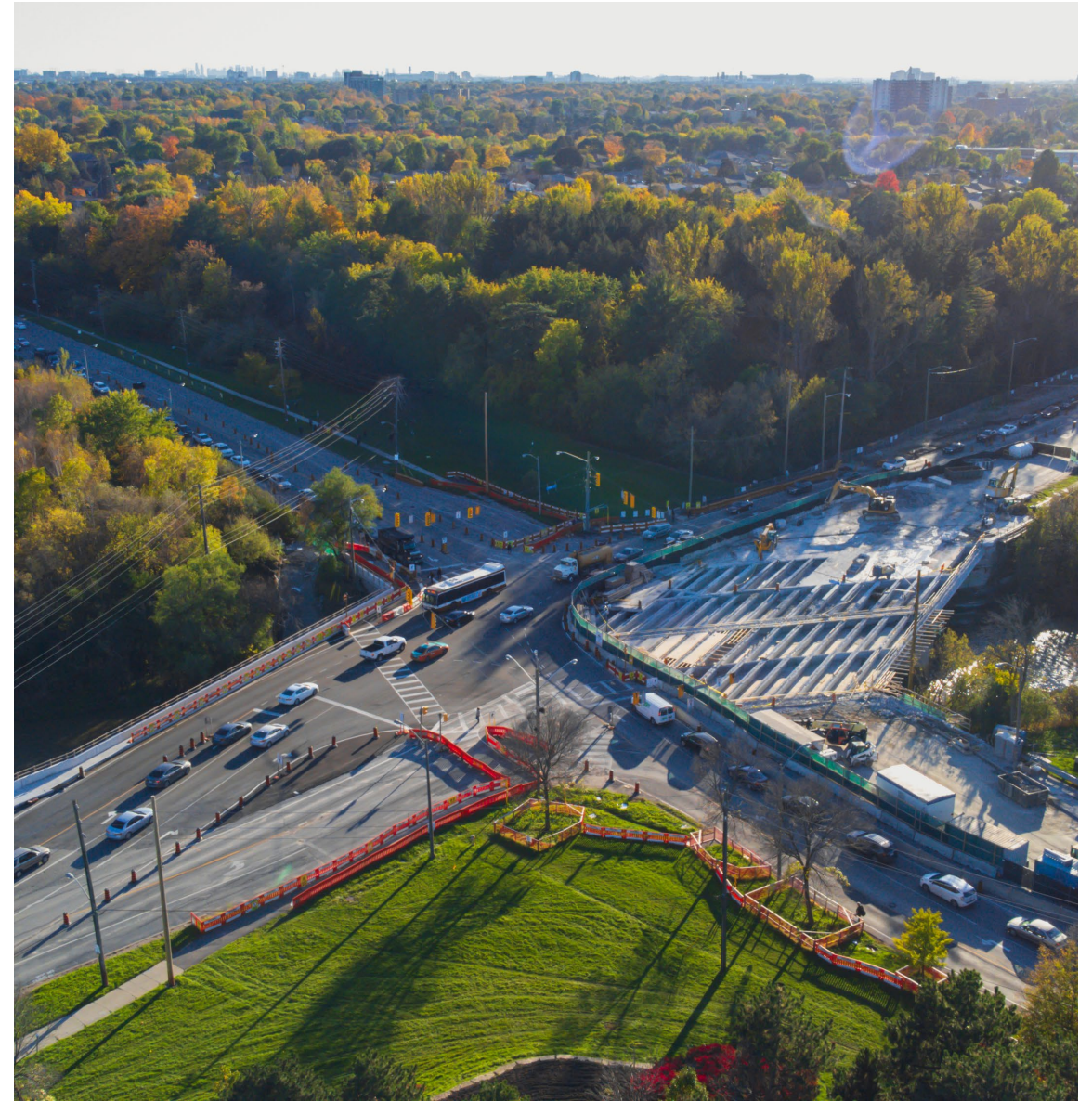


# HUMBER RIVER BRIDGE REHABILITATION - FINCH AND ISLINGTON AVENUE INTERSECTION

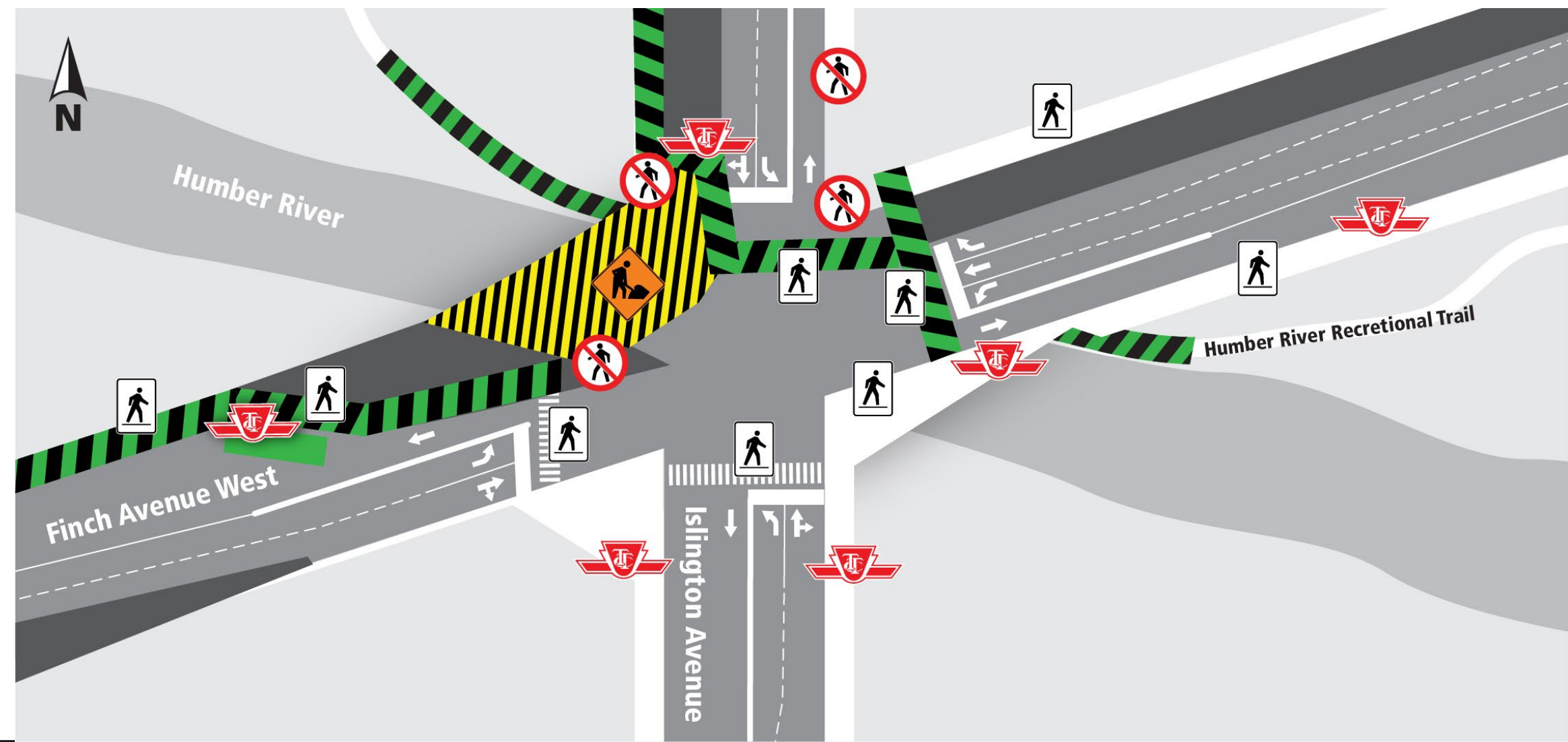
- Ongoing since early April 2021 for 18 months, approximately
- Work continues in the south - east and south-west quadrants (1&2)



*Photo: Aerial view Finch Avenue West and Islington Avenue.*



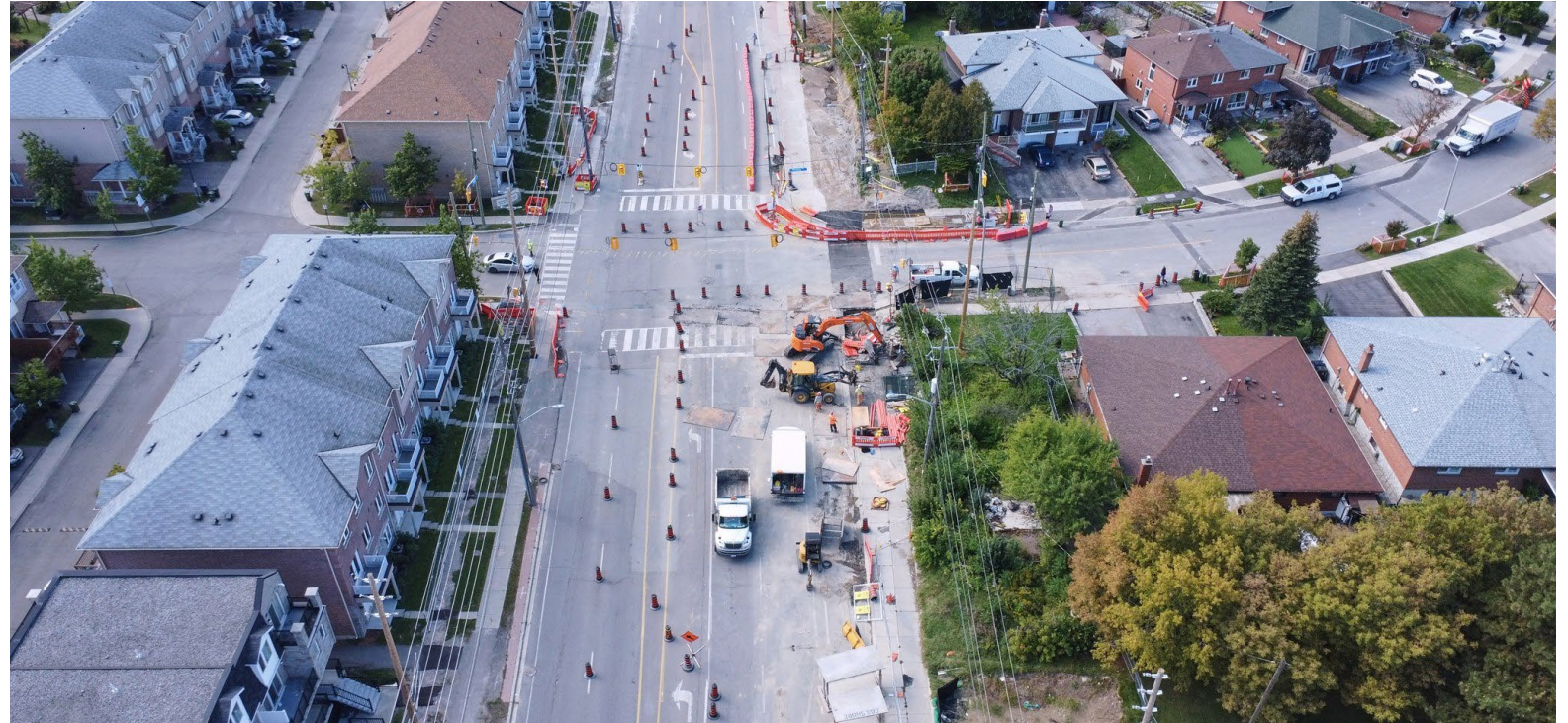
# TRAFFIC CONFIGURATION AT FINCH AVENUE W. AND ISLINGTON AVENUE





# WET AND DRY UTILITIES WORK FROM ISLINGTON AVENUE TO MILADY ROAD

- Wet and dry utilities work between Islington Ave. and Milady Road started in October 2021 and will continue until the end of December 2021
- Bus stops will be relocated, if necessary
- North and south sidewalks will remain open.
- Community members will be notified of any significant construction related impacts, separately



*Intersection of Finch Avenue West and Milady Road looking west.*

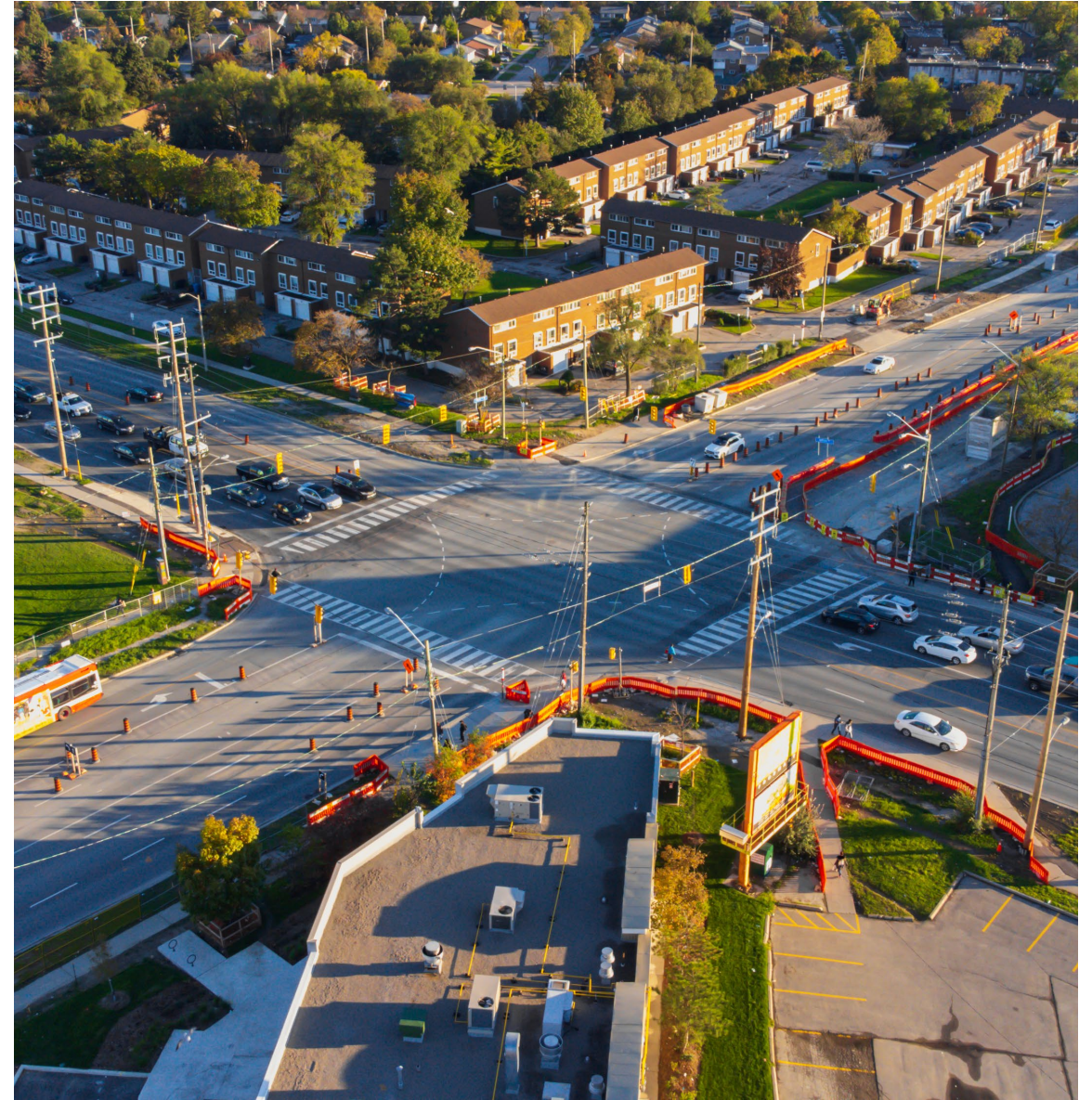


# CURRENT AND UPCOMING WORKS

## Albion Road and Finch Avenue West

- Dry utility relocation is ongoing at the intersection
- Wet utility installation continues until the end of 2021, approximately
- Road widening continues until 2022, approximately
- Retaining wall installation near Albion Mall started late November 2021 and is scheduled to be finished in February 2022, approximately.
- Community members will be notified of any significant construction related impacts, separately

*Photo: Intersection of Finch Avenue West and Albion Road.*



# INTERSECTION CLOSURE AT ALBION ROAD AND FINCH AVENUE WEST

## Traffic Changes at Albion Road to Finch Avenue West for Utility Work

- Storm and sewer relocation
- To safely perform the work across the intersection, crews intermittently close parts of the intersection.
- The work continues until the end of 2021



*Map: Area of construction work.*

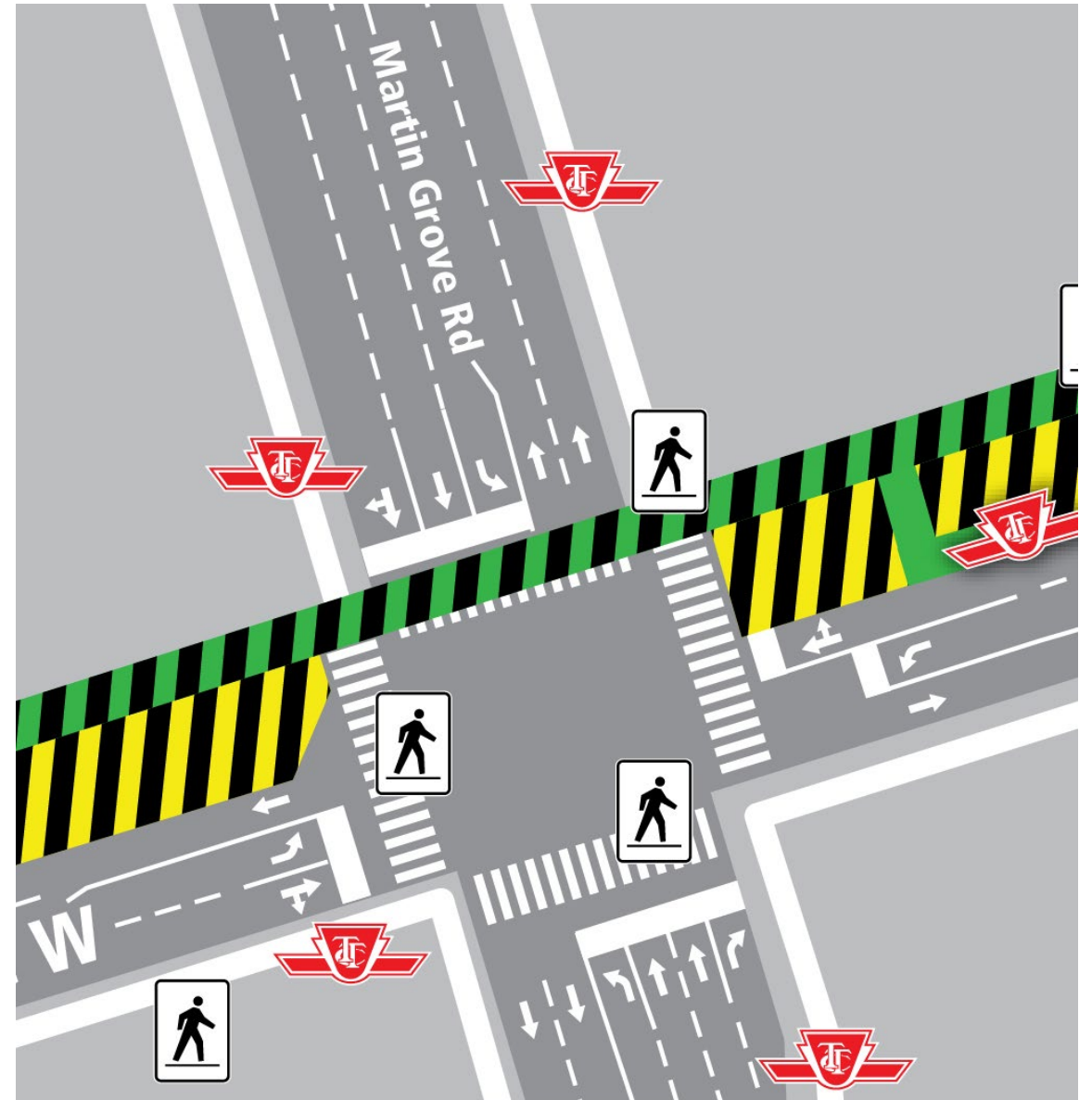


# CURRENT AND UPCOMING WORKS

## **Damascus Drive to Martin Grove Road - North widening and Guideway work**

- The work started in October 2021 and will be completed mid 2022, approximately
- North and South sidewalk will be opened
- North-South and East-West crossings will be opened
- Community members will be notified of any significant construction related impacts, separately

*Map: Traffic configuration on Martin Grove and Finch Avenue West intersection.*



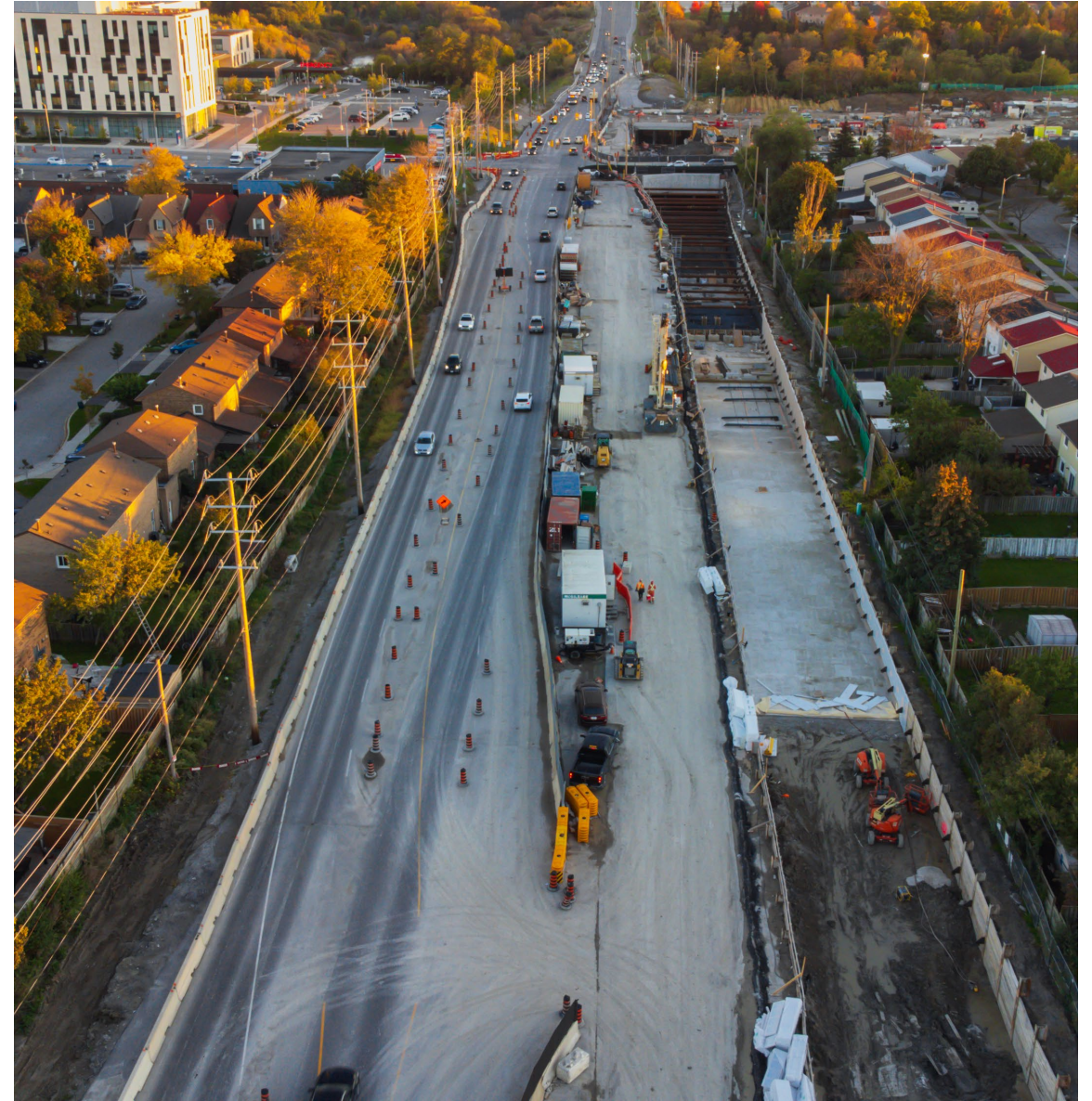
# **Humber College Stop and Highway 27**

# CURRENT WORKS

## Future Humber College Stop and Portal

- Pile drilling at Humber College Blvd and in Humber College Station is completed.
- Track slab construction started mid November 2021.
- Track installation will begin soon.
- Portal excavation is ongoing and will be finished in 2021.

*Photo: Highway 27 and Humber College Blvd looking south.*



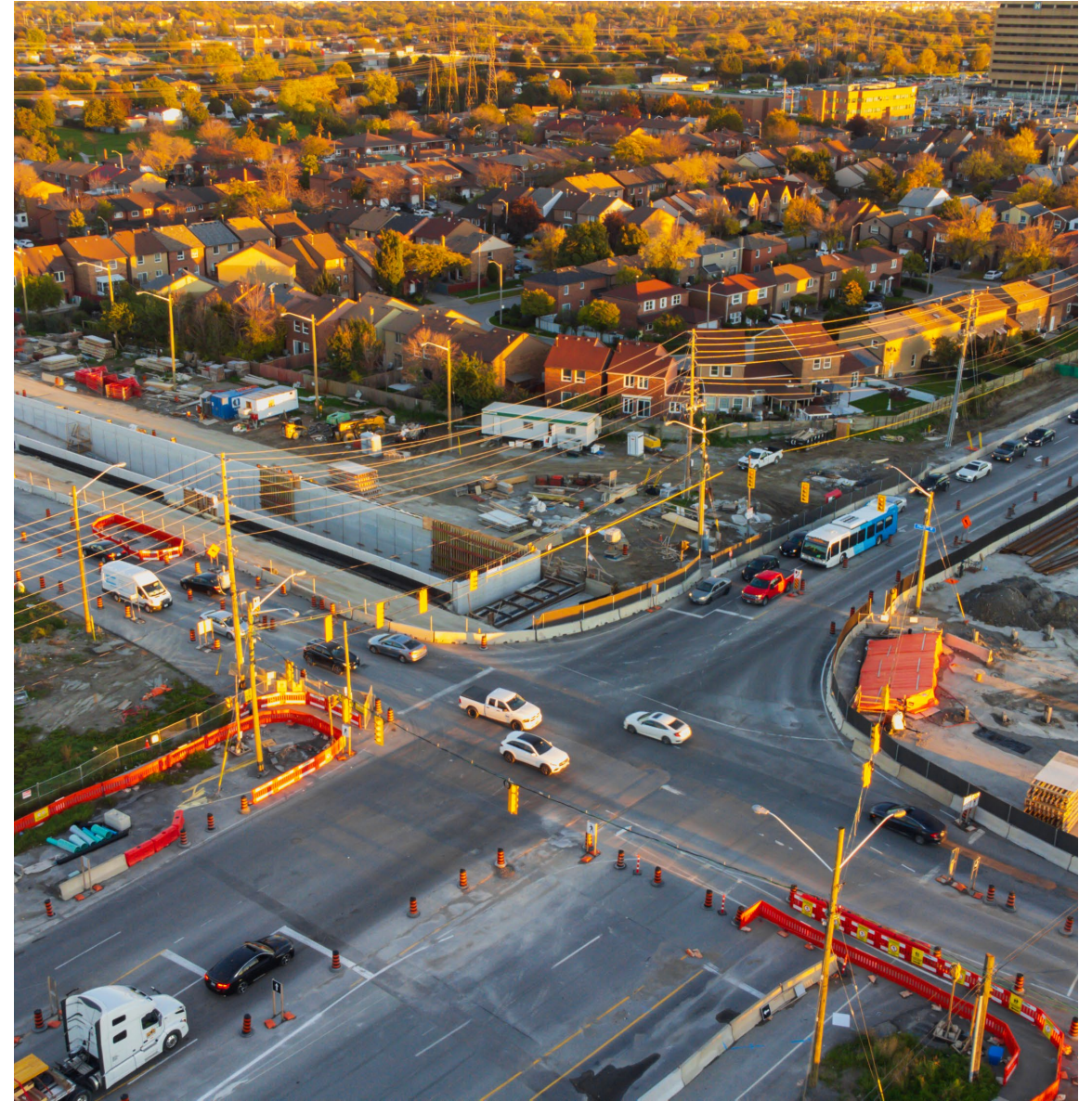


# COMPLETED AND UPCOMING WORKS

## Finch Avenue West and Highway 27

- Track slab construction started mid November 2021
- Mining under Humber College Blvd. and HWY 27 roof slab is ongoing until January 2022
- Mining under the Finch Ave. West and HWY 27 roof slab is ongoing
- The construction of the track drainage is ongoing.
- Concrete work continues.

*Photo: Inside Humber College Station portal.*



# **Communications and Community Engagement**



# COMMUNICATIONS AND COMMUNITY ENGAGEMENT UPDATE

- OCS poles installation
- Humber College Station / Finch West Station track installation
- York Gate Boulevard paving / reopening
- Road paving / reopening
- School swag drop-offs, faculty and BIA meetings/updates

## Upcoming

- Line Energization near burn in track
- LRV testing





# COMMUNICATION AND COMMUNITY ENGAGEMENT (PROPOSED SLIDE -MK)

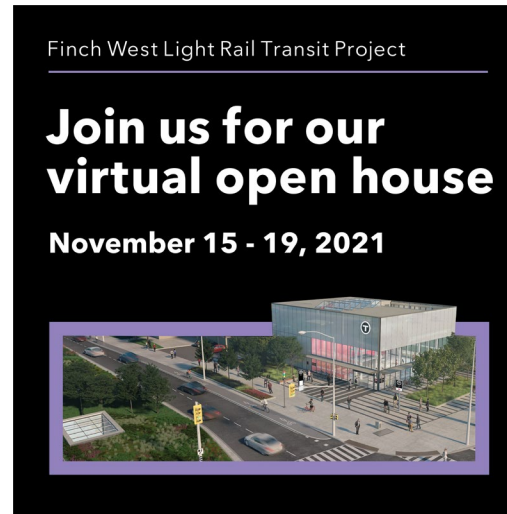
## Updates

- *Virtual Open House*
  - Impressions:
  - Engagement:
- *School presentations*
  - Grade 4/5/6 presentations at Elmbank Junior Academy
  - Safety meeting with Parent Council at James Cardinal McGuigan High School
- *OCS Energization*
  - Print and digital ads for safety ?
- Concrete pour at Finch West LRT station: [blog](#) and [video](#)

## Upcoming

- LRV testing progress
- Career presentations at secondary schools

*Photos: Top row - ads for Virtual Open House and Line energization. Bottom row - concrete pour and tracks at York Gate Blvd.)*



Finch West Light Rail Transit Project

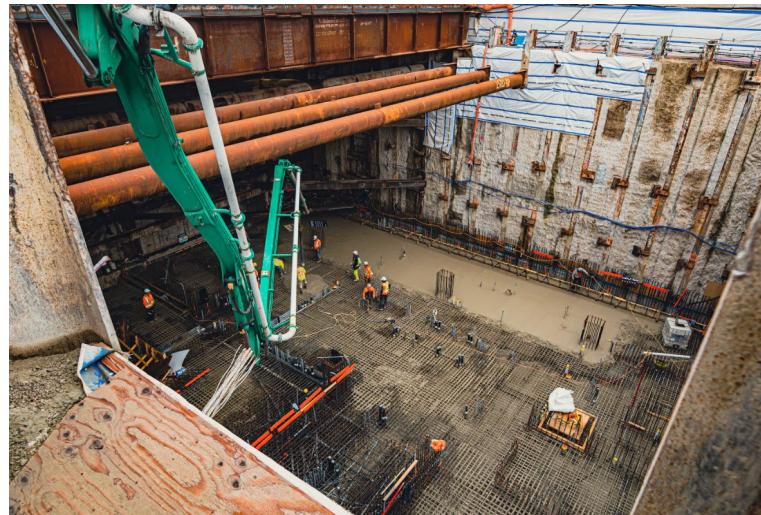
## CAUTION: Live Wires Overhead

The wires over the Finch West Light Rail Transit system are live. Stay away from dangerous high voltage wires. Cross only at marked intersections. Stay off the tracks and always obey traffic signals.

[www.metrolinx.com/finchwestlrt](http://www.metrolinx.com/finchwestlrt)



**METROLINX**





# KEEPING YOU INFORMED

## Communication Methods

- Construction Liaison Committee (CLC)
- Emails to Mailing List
- Weekly E-Newsletter
- Construction Notices
- Project Website Updates
- Frequently Asked Questions (FAQ)
- Metrolinx News Blog
- Wayfinding and Signage
- Social media - Geo-targeting

## Engagement Tools

- Virtual Open House via Metrolinx Engage
- Working or Advisory Group Meetings
- Business Liaison
- Public Meetings



**Stay Informed:** [metrolinx.com/finchwestlrt](https://www.metrolinx.com/finchwestlrt) and sign up to our Toronto West e-newsletter

**Questions or comments:** [TorontoWest@metrolinx.com](mailto:TorontoWest@metrolinx.com), @FinchWestLRT, 416-202-6500

# **Roundtable Discussion**



# NEXT CLC MEETING

CLC meeting will be held on the first Tuesday of every month

Next meeting will be on January 11, 2022,  
via Microsoft Teams



**Thank you and Stay Safe**



