

# Finch West LRT Project Construction Liaison Committee (CLC)

Tuesday, February 1, 2022



# AGENDA

- **Welcome and Introductions**
- **Safety Moment**
- **Land Acknowledgement**
- **Review of Minutes and Action Items**
- **Work Update**
  - Finch West Station
  - Utilities and Roadwork
  - Maintenance and Storage Facility
  - Hwy 400 Bridge
  - Humber College Stop
- **Communications and Community Engagement**
- **Roundtable discussion**



# **Safety Moment**

# **Land Acknowledgement**



# METROLINX LAND ACKNOWLEDGEMENT

Metrolinx acknowledges that it operates on the traditional territory of Indigenous Peoples including the Anishnabeg, the Haudenosaunee and the Wendat peoples.

In particular, we acknowledge that the Finch West LRT is occurring on lands covered by Treaty 13, 1805 with the Mississaugas of the Credit First Nation and the Fort Albany/Nanfan Treaty of 1701 signed with the Haudenosaunee.

Metrolinx is committed to building meaningful relationships with Indigenous Peoples, and to working towards meaningful reconciliation with the original caretakers of this land.

# **Review of Previous January 11, 2022 CLC Minutes and Action Items**

# REVIEW OF PREVIOUS CLC MEETING

- No action items



# **Finch West Station Update**

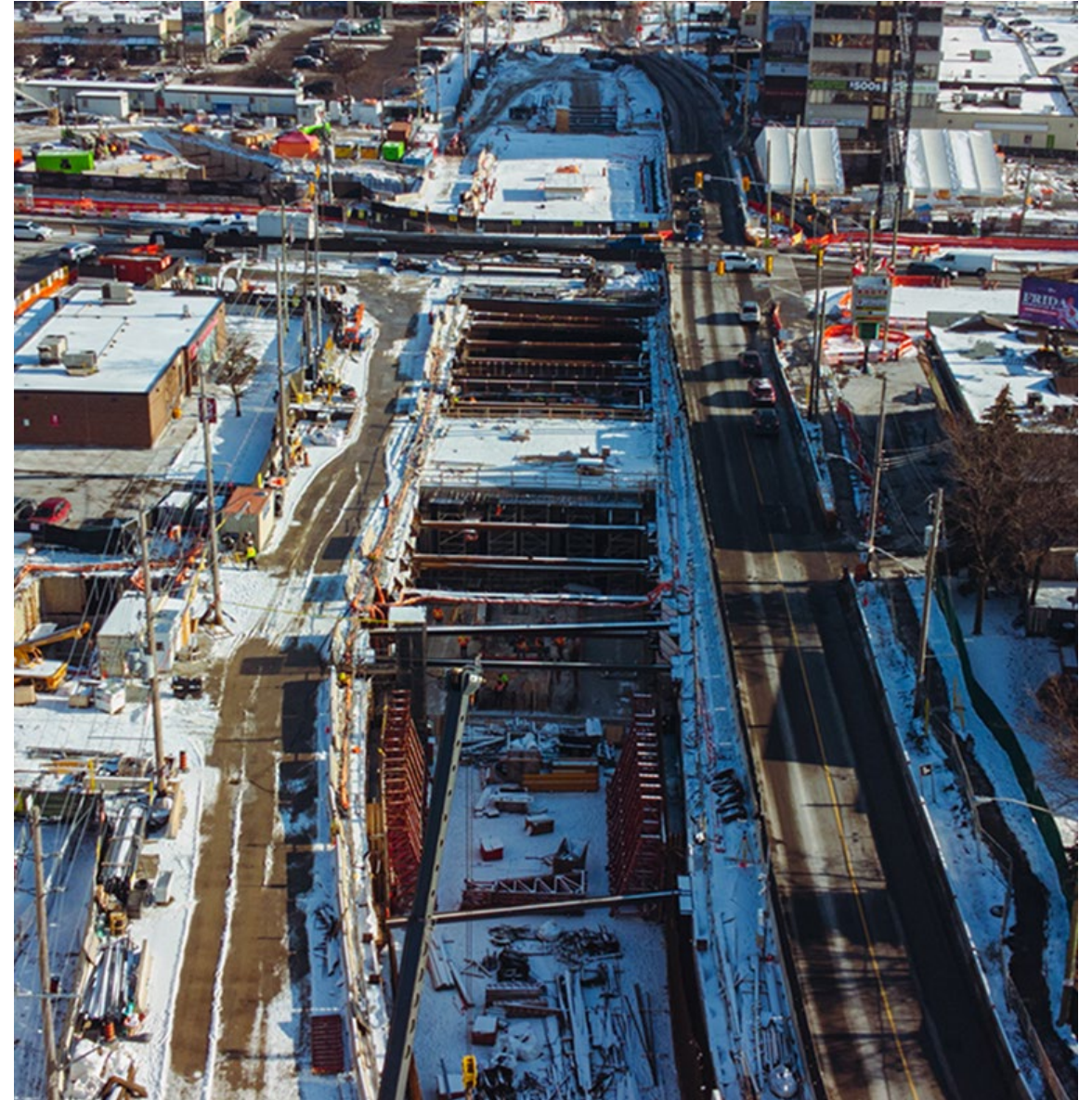


# CURRENT WORKS

## Finch West Station, Finch Avenue West at Keele Street

- Excavation to concourse level is complete and the structural work in the main box has begun.
- Rebar placing, formworks, platform slab works for the main entrance box continues.
- Rebar placement and wall for the west portal continues. All base slabs are complete. Platform slabs to follow

*Photo: Keele and Finch station and portals.*



# TRAFFIC PLAN @ FINCH AVENUE WEST AND KEELE STREET

- New traffic stage is scheduled to be implemented late February/Early March.
- This is a proposed plan and final plan will be shared before implementation.
- West cross walk at Keele Street and Finch Avenue West is open.
- South sidewalk at Finch Avenue West is accessible
- Next traffic plan with more southbound and northbound lanes open will be implemented later in Spring 2022
- Paid Duty Officer, flaggers, and detour signs to direct traffic, if needed.
- Community members will be notified of any significant construction related impacts, separately



*Photo: View of the intersection of Finch Avenue West and Keele St.*

# **Keele Street to Weston Road Corridor Work**



# TRAFFIC SPLIT @ FINCH AVENUE WEST AND ROMFIELD DRIVE

- Guideway work is ongoing from late 2021 and will last for eight months, approximately.
- Paid Duty Officer, flaggers, and detour signs to direct traffic, if needed.
- Community members will be notified of any significant construction related impacts, separately



*Photo: View of the intersection of Finch Avenue West and Romfield Lane*

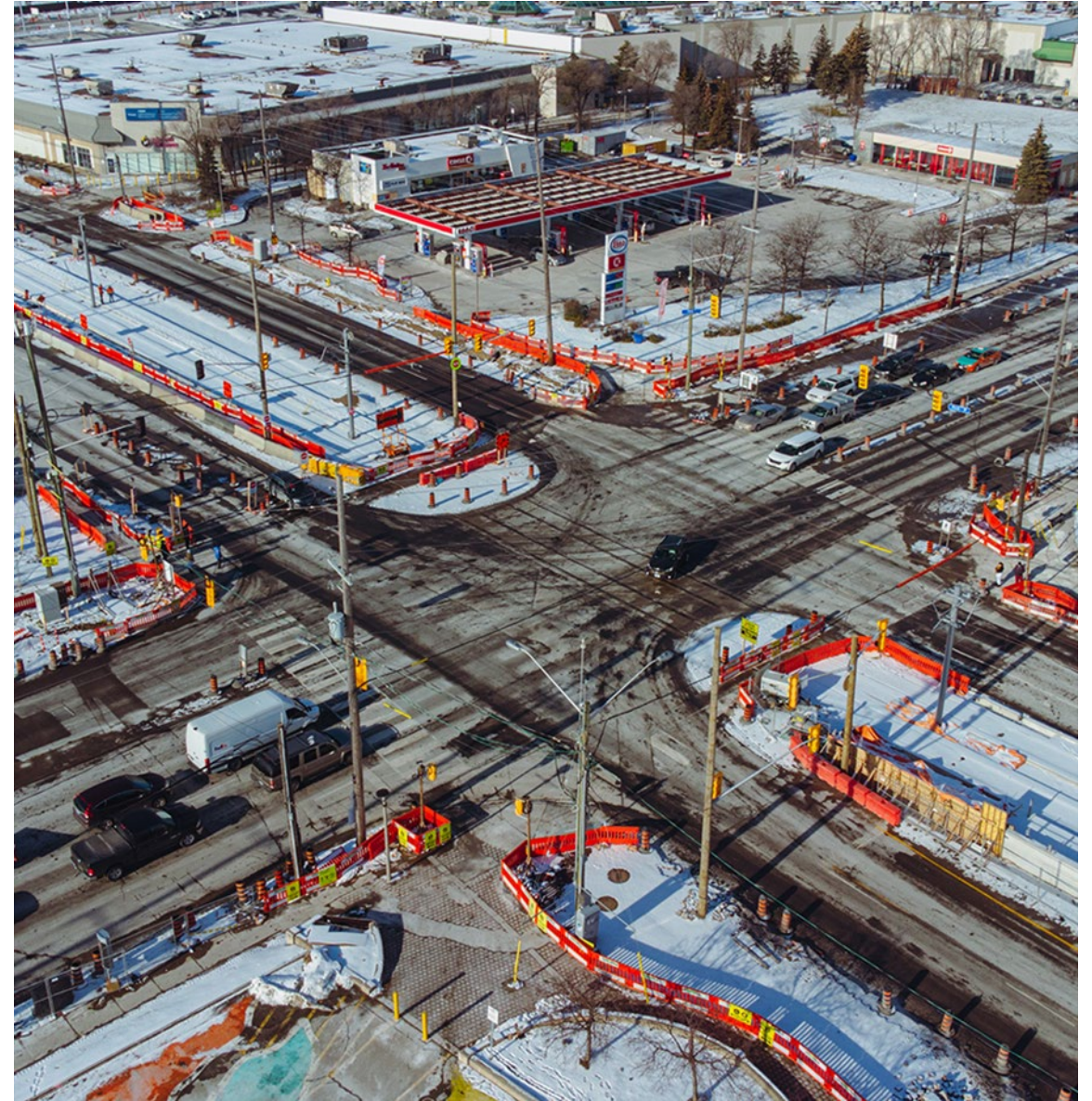


# CURRENT AND UPCOMING WORKS ACROSS FINCH AVENUE WEST

## From Keele Street to Jane Street

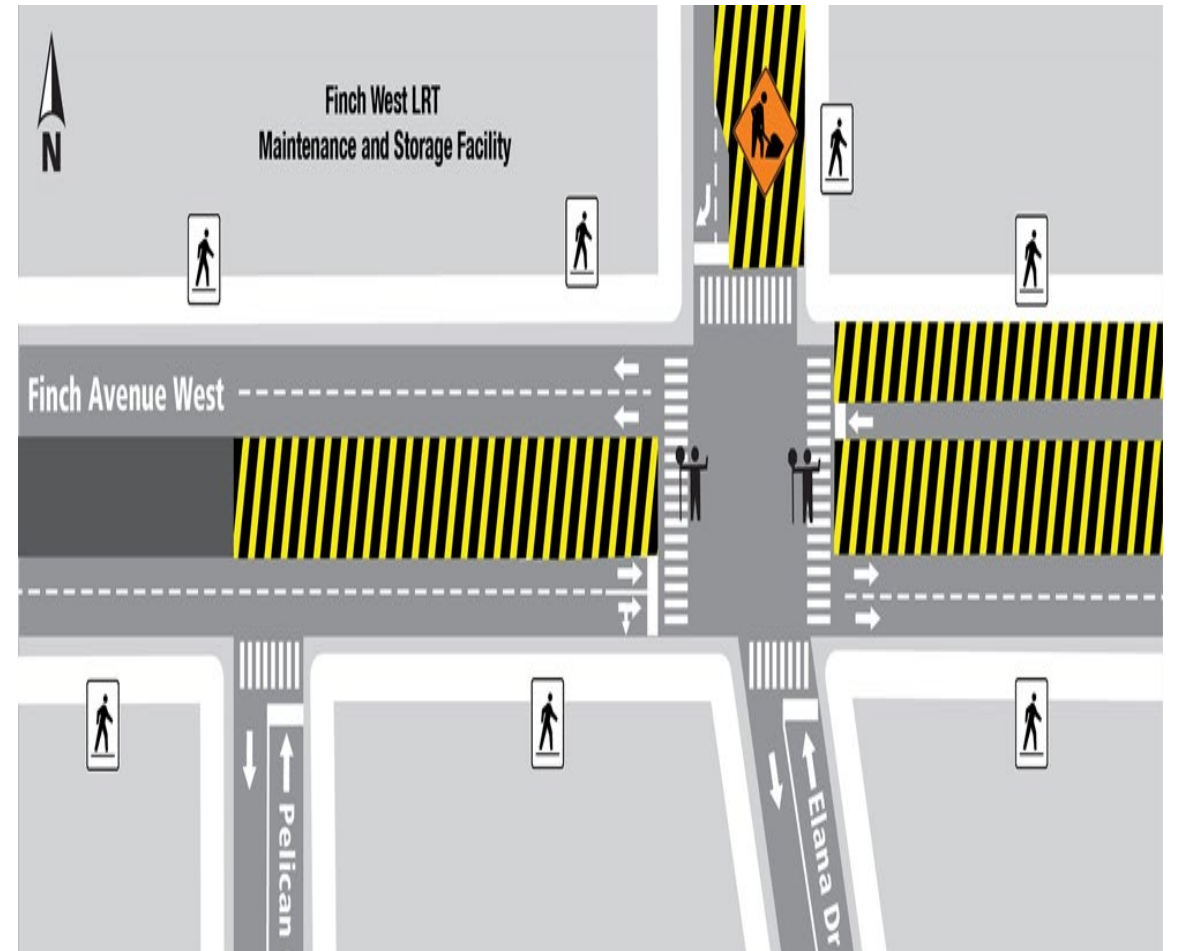
- Relocation of telecommunication and hydro (duct banks, cables, and new chambers) along Finch Avenue West is almost done.
- Installation of OCS bases and poles is completed, and wire stringing/regulating is ongoing in specific locations
- Track Slab between Sentinel and Elena Dr. is completed.
- Underground Hydro works will start soon from east of Elana to San Romanoway
- Westbound stop platform installation at Tobermory Drive has commenced and eastbound will start soon.

*Photo: View of the intersection of Finch Avenue West and Jane Street*



# TRAFFIC PLAN AT YORK GATE BOULEVARD FOR OCS REGULATION

- There will be partial closure at the intersection of York Gate Boulevard and Finch Avenue West.
- The final cable regulation for Overhead Catenary Systems is ongoing during working hours and traffic will be reinstated daily.
- Paid Duty Officer and detour signs to direct traffic are in place.



*Photo: View of the intersection of Finch Avenue West and York Gate Boulevard*

# **Maintenance and Storage Facility**



# ONGOING ACTIVITIES

## In Progress:

- LRT equipment and Systems installation
- Final Landscaping
- Testing & commissioning



*Photo: Inside the MSF*



# MSF SITE



*Photo: Aerial view of Maintenance and Storage Facility.*



# CURRENT AND UPCOMING WORKS ACROSS FINCH AVENUE WEST

## From Jane Street to Norfinch Drive/Oakdale Road

- Road and wet utility work almost completed
- Track, rail, and overhead catenary system is completed from Pelican Gate to Jane Street
- Transmission main and sewer works on the south side of Finch will start soon.
- Minor construction activities with minimal impact on the traffic might be done in specific locations



*Photo: Aerial view of Finch Avenue West and York Gate Boulevard looking east.*



# CURRENT AND UPCOMING WORKS ACROSS FINCH AVENUE WEST

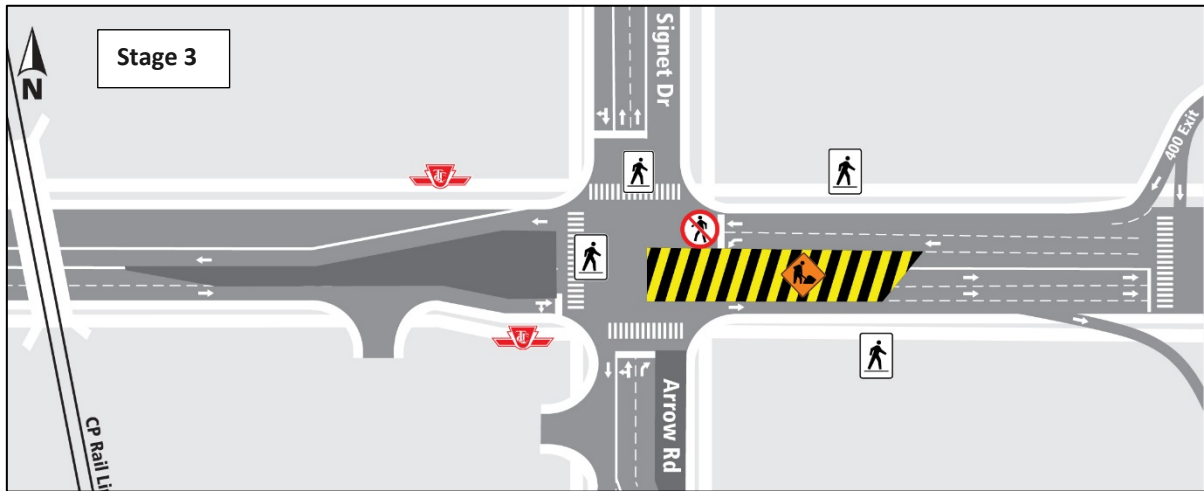
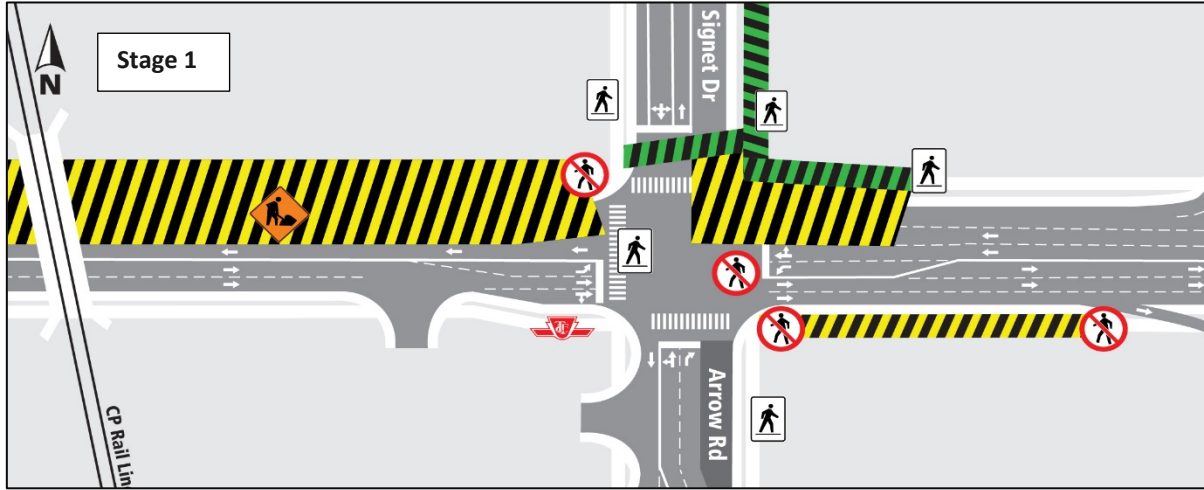
## From Norfinch Drive/Oakdale Road to Signet Drive/Arrow Road

- Watermain installation at Norfinch Drive and Finch Avenue West is ongoing.
- Watermain installation at Signet Drive is ongoing.
- Hydro and telecommunications relocation will start after wet utility relocation on both sides of Finch Avenue West is complete.
- Underground electrical work underway from the CP Bridge to Signet Drive.

*Photo: View of the intersection of Finch Avenue West and Norfinch Drive looking south.*



# FOUR STAGES OF TRAFFIC CONFIGURATION, SIGNET DRIVE/ARROW ROAD





# **Highway 400 Bridge Rehabilitation Update**

# CURRENT AND UPCOMING WORKS

- Road and guideway work is underway
- Wet utilities installation is ongoing
- Multi Use Purpose (MUP) tunnel work will resume in spring 2022
- Expect **periodic** ramp closures
- Occasional night work occurs **from 6 pm to 7 am**. Additional notices will be provided as needed.



*Map: Aerial view of 400 ramp work.*

# **Weston Road to Highway 27**



# WESTON ROAD AND FINCH AVENUE WEST INTERSECTION

## Ongoing and Upcoming Works

- Underground excavation is almost complete.
- Watermain installation on the north side of the intersection is almost complete.
- Storm and sanitary sewer work on the south side will take place after watermain work is completed.

*Photo: Intersection of Finch Avenue West and Weston Road.*



# ROADWORKS AND RETAINING WALL INSTALLATION BETWEEN SIGNET DRIVE AND WESTON ROAD.

- This traffic configuration will remain in place until May 2022.
- Bus stops will be relocated, if necessary
- There will be a Paid Duty Officer, flaggers, and detour signs to direct traffic, as needed.



*Intersection of Finch Avenue West and Weston Road.*



# RETAINING WALL INSTALLATION NEAR FINCHDALE PLAZA

- Retaining wall installation near Finchdale Plaza continues and is expected to be finished in May 2022
- Motorists and pedestrians should be aware of and follow traffic/pedestrian signage and flag persons
- Community members will be notified of water shut-off and power outages, if any, separately



*Map: Area of construction work. Finch Avenue West looking west.*



# HUMBER RIVER BRIDGE REHABILITATION - FINCH AND ISLINGTON AVENUE INTERSECTION

- Ongoing since early April 2021 for 18 months, approximately. Zones 1 & 2 are almost completed.
- Work will continue in the north - east and south-west quadrants (3 & 4), starting mid-February 2022, approximately

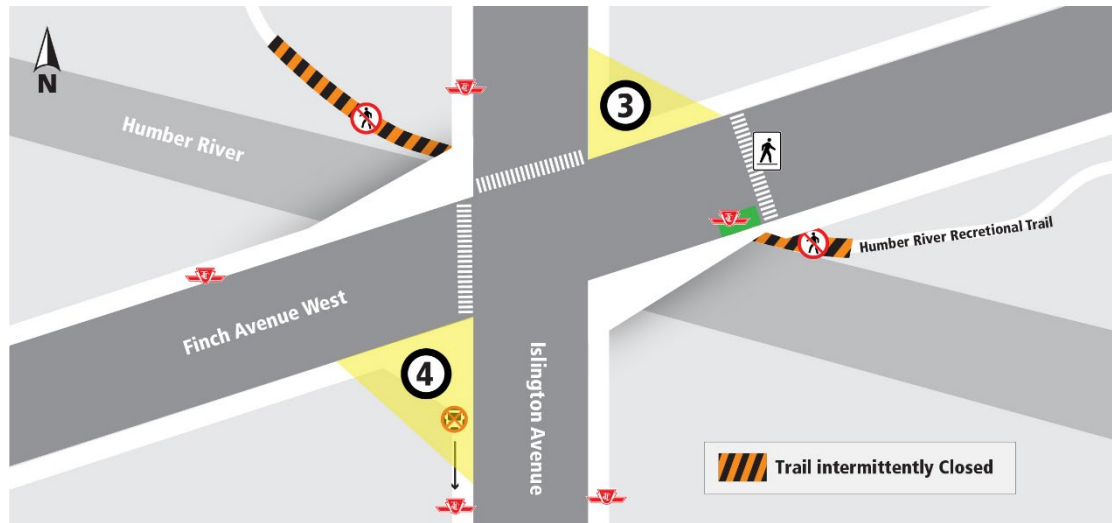
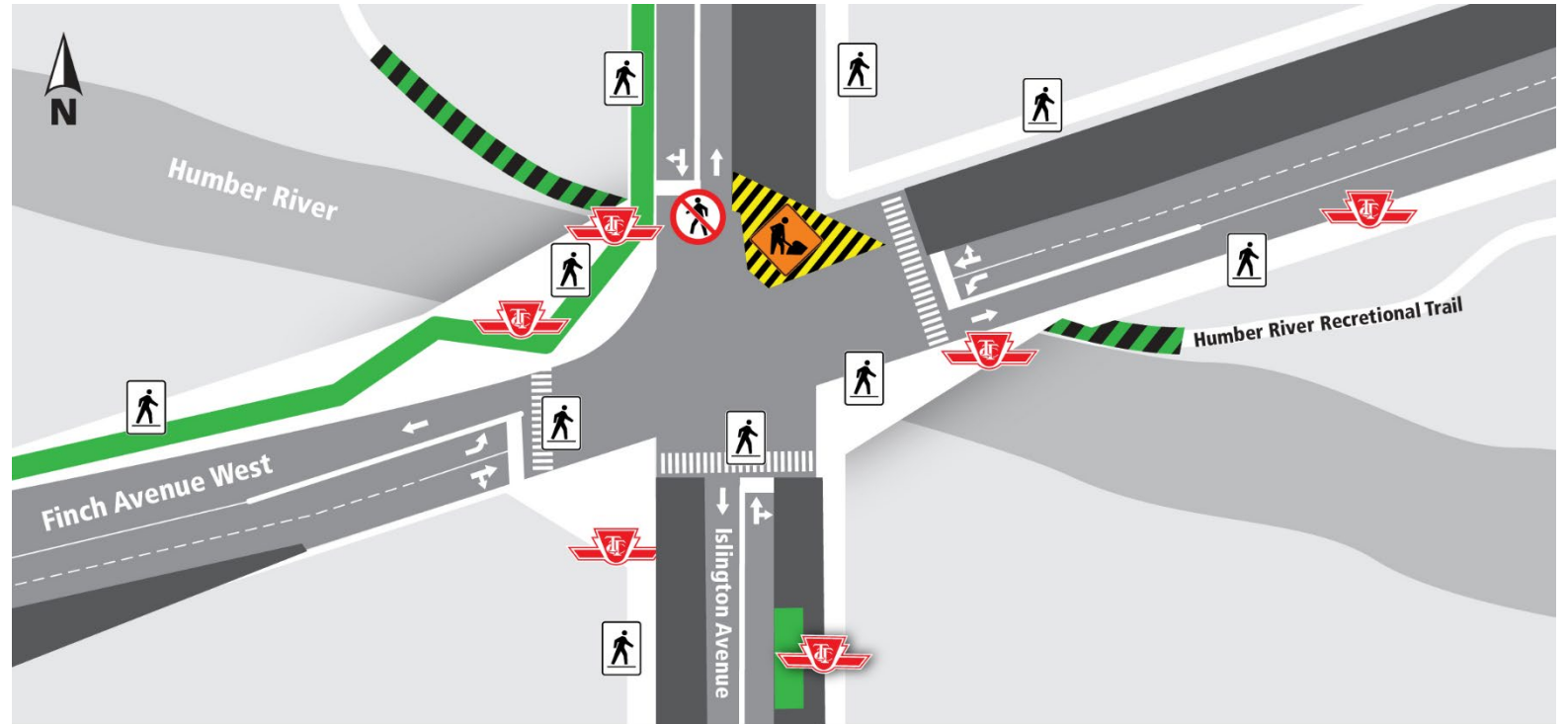


Photo: Aerial view Finch Avenue West and Islington Avenue.



# HUMBER RIVER BRIDGE REHABILITATION CONTINUES.

- This traffic configuration will remain in place from mid-February until May 2022.
- Bus stops will be relocated, if necessary
- There will be a Paid Duty Officer, flaggers, and detour signs to direct traffic, as needed.



*Intersection of Finch Avenue West and Islington Avenue.*



# WET AND DRY UTILITIES WORK FROM ISLINGTON AVENUE TO MILADY ROAD

- Wet and dry utilities work between Islington Ave. and Milady Road started in October 2021 and will continue until spring 2022
- North and south sidewalks will remain open.
- Community members will be notified of any significant construction related impacts, separately



*Intersection of Finch Avenue West and Milady Road looking west.*



# CURRENT AND UPCOMING WORKS

## Albion Road and Finch Avenue West

- Dry utility relocation is ongoing at the intersection
- Wet utility installation continues until summer 2022, approximately
- Road widening continues in 2022, approximately
- Retaining wall installation near Albion Mall is ongoing.
- Community members will be notified of any significant construction related impacts, separately

*Photo: Intersection of Finch Avenue West and Albion Road.*





# INTERSECTION CLOSURE AT ALBION ROAD AND FINCH AVENUE WEST

## Traffic Changes at Albion Road to Finch Avenue West for Utility Work

- Storm and sewer relocation.
- To safely perform the work across the intersection, crews intermittently close parts of the intersection.
- The work continues until spring 2022



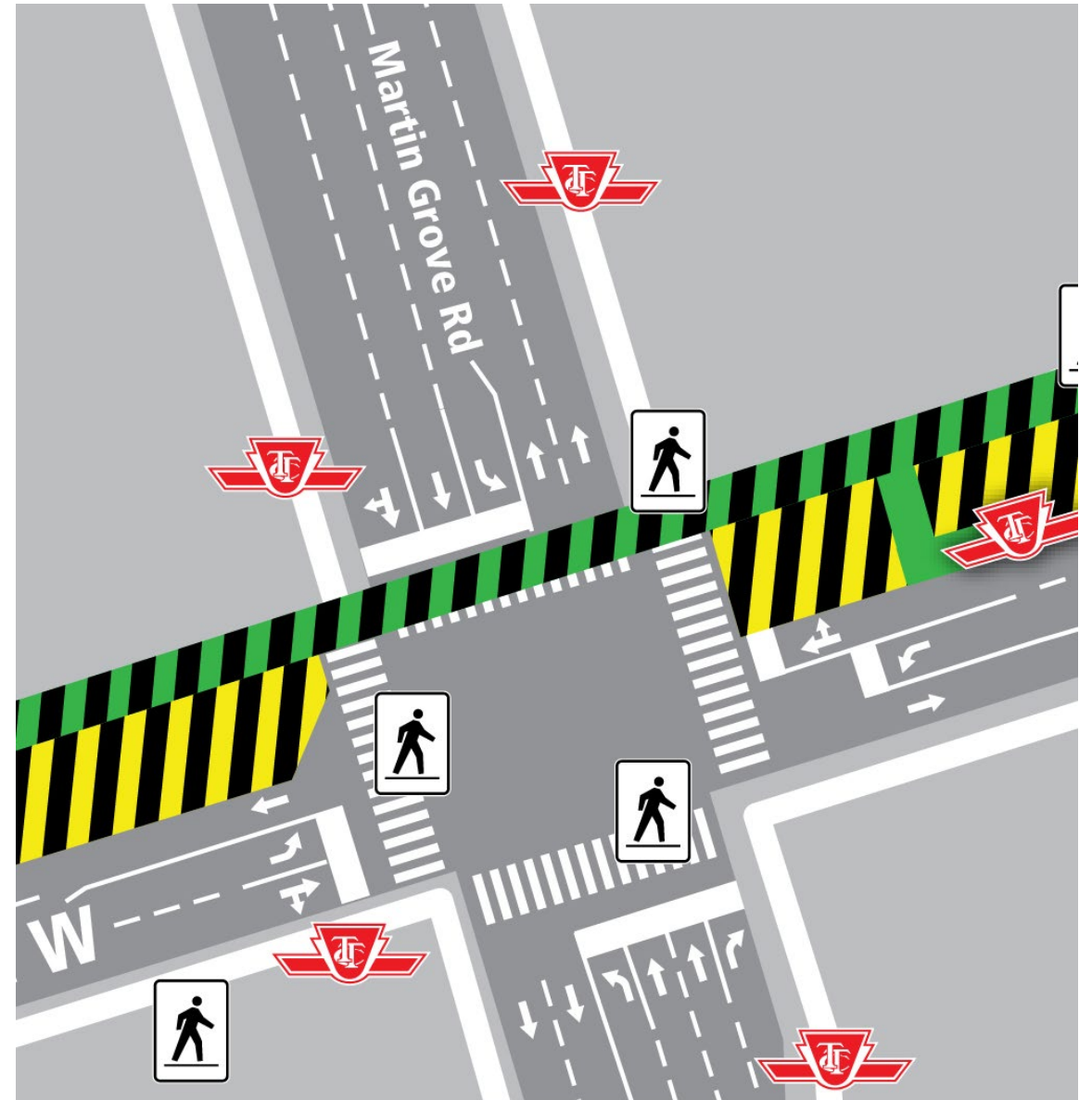
*Map: Area of construction work.*

# CURRENT AND UPCOMING WORKS

## Damascus Drive to Martin Grove Road - Road widening and Guideway work

- The work started in October 2021 and is ongoing.
- North and south sidewalks are open.
- North-south and east-west crossings are open.
- Community members will be notified of any significant construction related impacts, separately

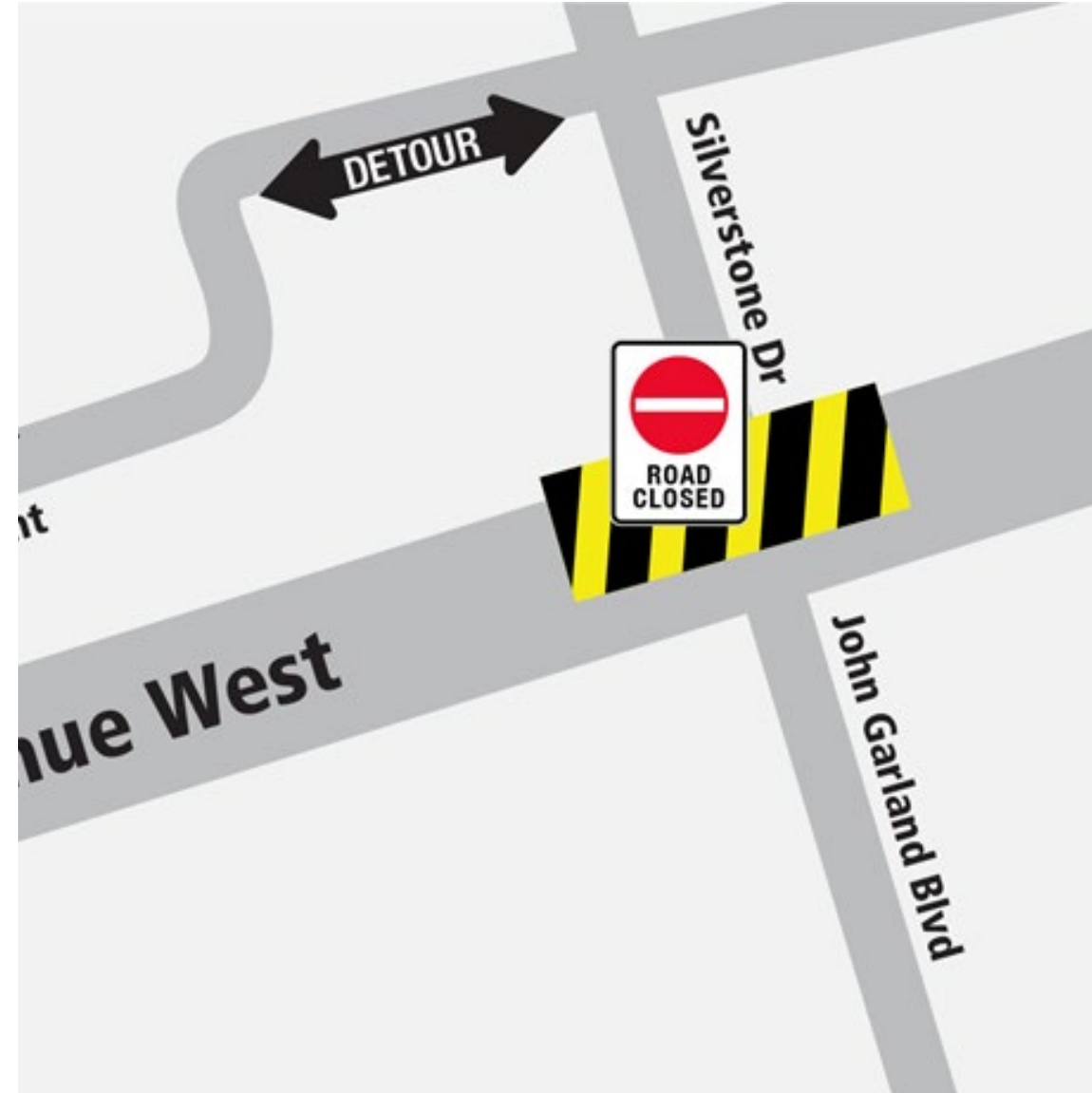
*Map: Traffic configuration on Martin Grove and Finch Avenue West intersection.*



# CURRENT AND UPCOMING WORKS

## Silverstone Drive closure due to Duct bank installation

- Silverstone Drive Closure from late January to early March 2022, approximately
- Sidewalks remain open.
- Community members will be notified of any significant construction related impacts, separately



*Map: Traffic configuration on Martin Grove and Finch Avenue West intersection.*

# **Humber College Stop and Highway 27**

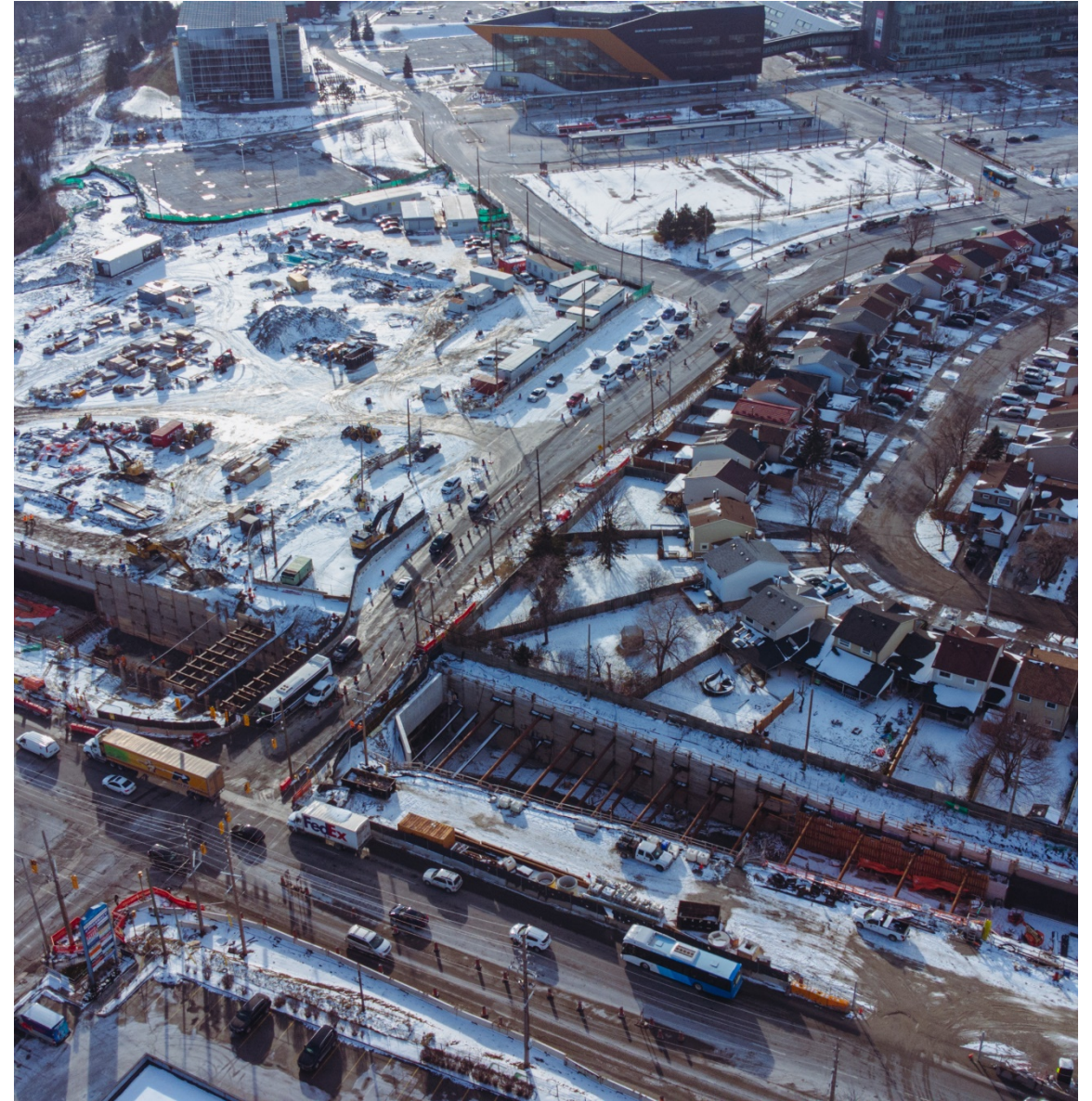


# CURRENT WORKS

## Future Humber College Stop and Portal

- Track slab construction in Finch Avenue West is ongoing.
- Portal excavation is ongoing and will be finished late February 2022
- Rail installation will start after track slab work is complete.

*Photo: Highway 27 and Humber College Blvd looking west.*





# COMPLETED AND UPCOMING WORKS

## Finch Avenue West and Highway 27

- Track slab construction started mid-November 2021
- Mining under Humber College Blvd. and HWY 27 roof slab was finished in December 2021
- Excavation under the Finch Ave. West and HWY 27 roof slab is ongoing
- Structural steel installation will start in Feb 2022.
- The construction of the track drainage is ongoing
- Concrete work continues



*Photo: Aerial view of Highway 27 and Finch Avenue West looking south*

# **Communications and Community Engagement**



# COMMUNICATION AND COMMUNITY ENGAGEMENT

## Updates

- *OCS Energization & Vehicle Testing*
  - *Print & digital ads for safety*
  - *Local signage*
- Elected officials, BIAs and stakeholder meetings

## Upcoming

- Career presentations at secondary schools
- LRV testing
- TPSS Community QA Fact Sheet
- Guideway Community QA Fact Sheet
- MX Q1 2022 Newsletter
- Project overview community brochure
- Finchalicious



**Construction Ahead:**  
Finch West Light Rail Transit - Traction Power Substations

# KEEPING YOU INFORMED

## Communication Methods

- Construction Liaison Committee (CLC)
- Emails to Mailing List
- Weekly E-Newsletter
- Construction Notices
- Project Website Updates
- Frequently Asked Questions (FAQ)
- Metrolinx News Blog
- Wayfinding and Signage
- Social media - Geo-targeting
- Metrolinx Q1 2022 Newsletter
- Community Project Update brochure

## Engagement Tools

- Virtual Open House via Metrolinx Engage
- Working or Advisory Group Meetings
- Business Liaison
- Public Meetings



**Stay Informed:** [metrolinx.com/finchwestlrt](https://www.metrolinx.com/finchwestlrt) and sign up to our Toronto West e-newsletter

**Questions or comments:** [TorontoWest@metrolinx.com](mailto:TorontoWest@metrolinx.com), @FinchWestLRT, 416-202-6500

# **Roundtable Discussion**



# NEXT CLC MEETING

CLC meeting will be held on the first Tuesday of every month

Next meeting will be on March 1, 2022, via Microsoft Teams



**Thank you and Stay Safe**

