

Scarborough Subway Extension
Virtual Open House
Monday, March 7, 2022

Land Acknowledgement

Let us take a moment to acknowledge that we are on the traditional territory of Indigenous Peoples including the Anishnabeg, the Haudenosaunee and the Wendat peoples.

We are all Treaty people. Many of us have come here as settlers and immigrants...in this generation or generations past. Metrolinx declares its commitment to building meaningful relationships with Indigenous Peoples.

We acknowledge the historic and continued impacts of colonialization and the need to work towards meaningful reconciliation with the original caretakers of this land.

We acknowledge that Metrolinx operates on lands covered by 20 Treaties, and that we have a responsibility to recognize and value the rights of Indigenous Nations and Peoples and conduct business in a manner that is built on the foundation of trust, respect and collaboration.

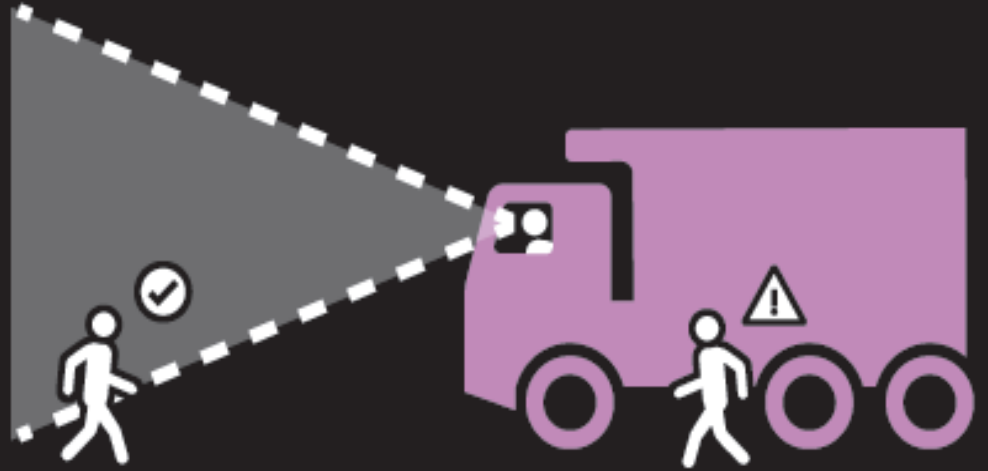
Agenda

- Safety Moment
- Introduction to the Panel
- Presentation
 - Project Overview
 - Advanced Tunnel Construction Update
 - Station Location Overhead Visuals
 - Station Design Approach
- Q&A

Safety Moment

**If you can't see
the driver, they
can't see you.**

**BEWARE OF
BLIND SPOTS.**



Panelists/Presenters



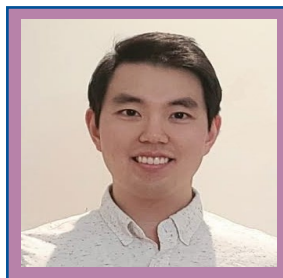
Adetokunbo
Bodunrin
Design Review
Specialist, Metrolinx



Victoria Superina
Stations Project
Manager, SSE



Andrej Butala
Headwalls
Manager,
STRABAG



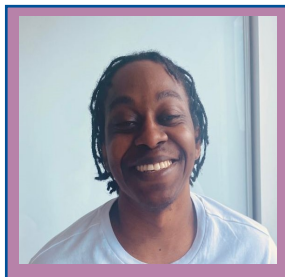
Justin Ji
Stations Manager,
SSE



Ross Bain
Senior Project
Manager, SSE



Jenny Matharu
Program Sponsor,
SSE



Nigel Sandy
Community Relations
Specialist, SSE



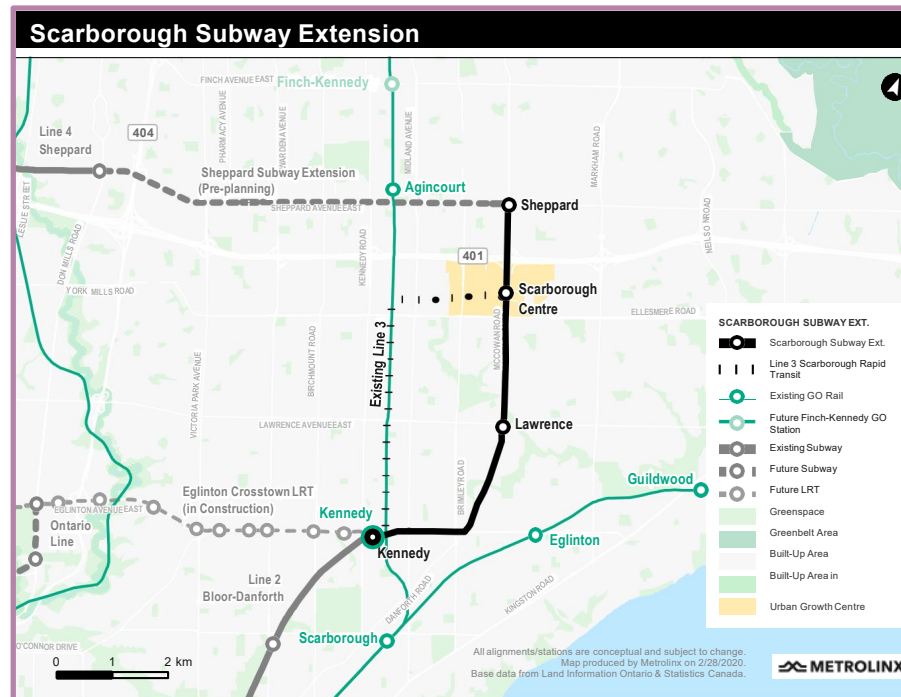
Georgina Collymore
Community Engagement
Manager, SSE

Project Overview

The Scarborough Subway Extension - Project Overview

Number of Stations	3
Station Locations	<ul style="list-style-type: none"> Lawrence Avenue and McCowan Road Scarborough Centre Sheppard Avenue and McCowan Road
Connections to Transit	Stouffville GO at Kennedy Station
	Future Durham Region Bus Rapid Transit at Scarborough Centre Station
	Future Eglinton Crosstown LRT at Kennedy Station
	Various bus connections at all stations
Approximate Length	7.8 km
Anticipated Boardings	105,000 daily boardings
Access to Transit	38,000 more people within walking distance to transit
Access to Jobs	More than 34,000 jobs within a 10-minute walk from a new Scarborough Subway Extension station stop
Anticipated Capital Costs	Approximately \$5.5 billion
Targeted In-Service Dates	2029-2030

The Scarborough Subway Extension will provide seamless travel between Scarborough and the downtown core. It will improve access to transit for area residents, reduce daily travel times for commuters and also create job opportunities.



The Scarborough Subway Extension - Contract Breakdown

1. ATSSE (Advanced Tunnel SSE) Contract – Awarded & In Construction

- Constructor – STRABAG
- Tunnel length – 7.8 km
- Estimated completion – 2024

2. Stations, Rail, and Systems (SRS) – In Procurement

- Design and build the 3 stations
- Tracks and operations technology
- RFP stage – 3 teams shortlisted
- Procurement to be complete in Fall 2022

Dragados

Applicant Lead: Dragados Canada, Inc.

Design Prime Team Member: AECOM Canada, Ltd.

Construction Prime Team Member: Dragados Canada, Inc.

KSX Integrated Design-Builders

Applicant Leads: Peter Kiewit Sons ULC, SNC-Lavalin Constructors (Pacific) Inc.

Design Prime Team Members: Peter Kiewit Sons ULC, SNC-Lavalin Constructors (Pacific) Inc.

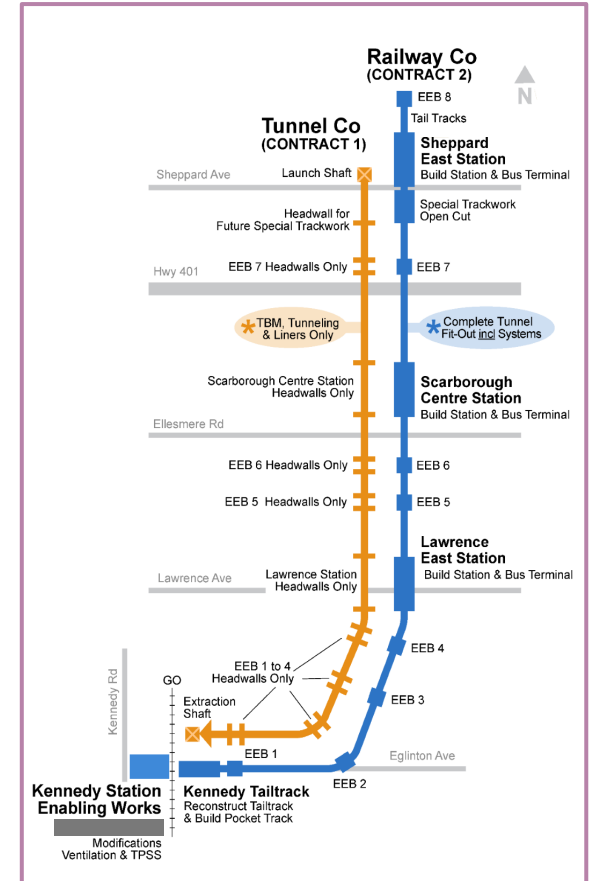
Construction Prime Team Members: Peter Kiewit Sons ULC, SNC-Lavalin Constructors (Pacific) Inc.

Scarborough Transit Connect

Applicant Leads: Aecon Infrastructure Management Inc., FCC Construcción S.A.

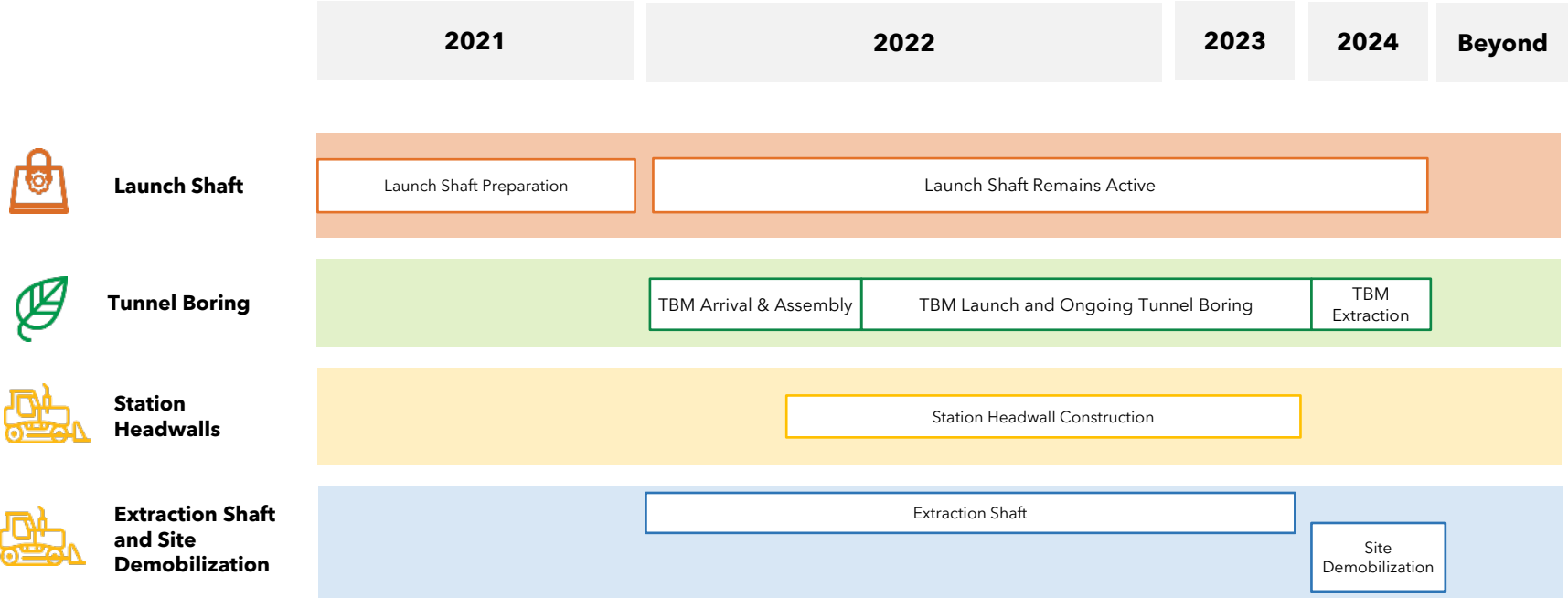
Design Prime Team Member: Mott MacDonald Canada Limited

Construction Prime Team Members: Aecon Infrastructure Management Inc., FCC Construcción S.A.

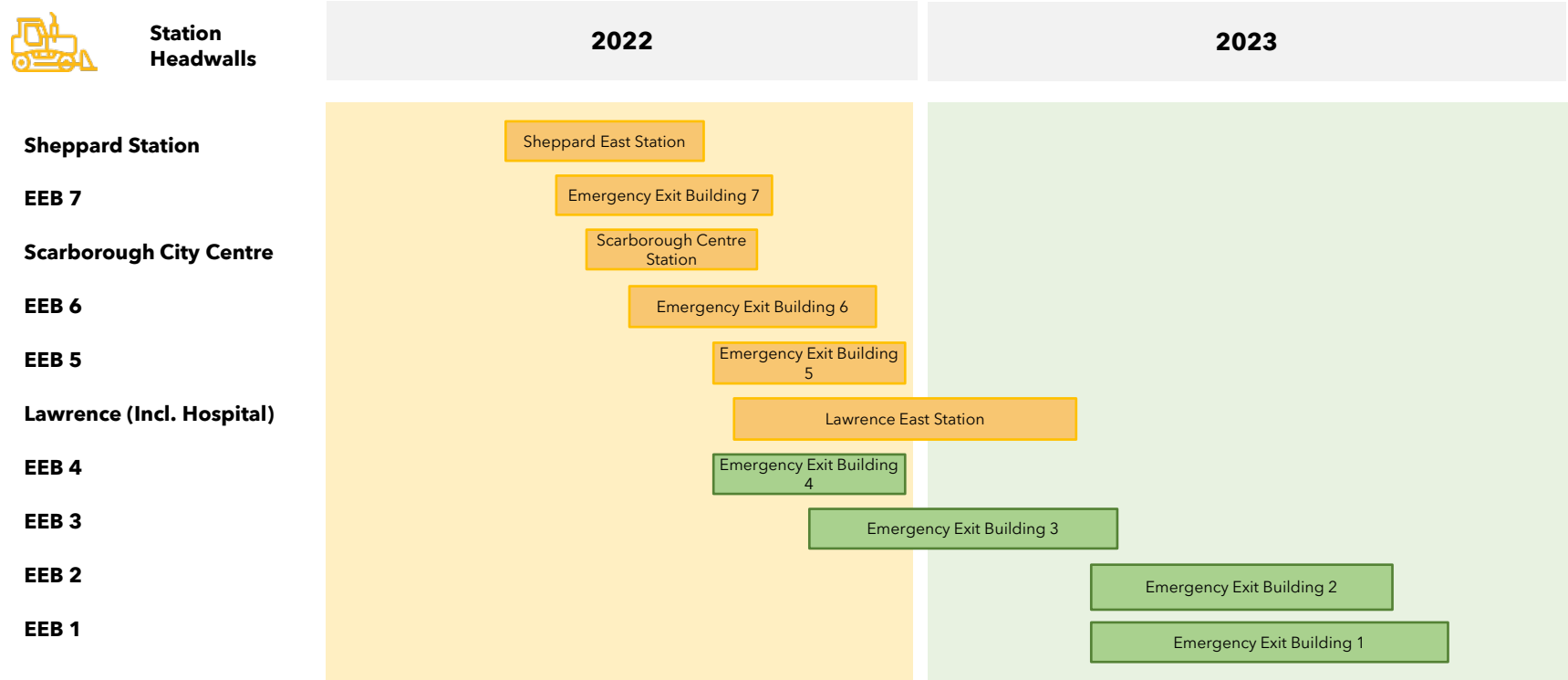


Advanced Tunnel Construction Update

The Scarborough Subway Extension – Tunneling Timeline



The Scarborough Subway Extension - Headwall Timeline



Tree Removal Program

- Select trees will be removed prior to the start of construction for all 11 headwall locations.
- Notices will be hand delivered to nearby residents and businesses.
- Tree removals have begun on February 15th.
- During headwall construction, nearby trees not removed will be protected.

Scarborough Subway Extension

Tree Removal Notice

Tree Removals

February 2022



What is happening?

Select trees are being removed ahead of headwall construction for the Scarborough Subway Extension Project. The trees identified on the previous map will be removed starting the week of February 15, 2022. Only trees required for this work will be removed. Tree protection measures will be put in place for nearby trees not identified on the map during the building of headwalls, which is expected to start in March.

What is a headwall?

Headwalls are a crucial part of the tunnel building process. Headwalls will be built along the new subway route from Sheppard Avenue East and McCowan Road to Kennedy Station. Headwalls are underground support structures that create the frame for future subway stations and emergency exit buildings. The tunnel boring machine that is being used to build the tunnel will pass through these headwalls.

Project Background

The Scarborough Subway Extension will extend from Kennedy Station to Sheppard Avenue and McCowan Road, with three new stops at Lawrence and McCowan, Scarborough Town Centre and Sheppard and McCowan. The extension will replace the existing Line 3 (the Scarborough RT) and is estimated to be complete by 2029-30.

Hours of Work

Work to remove trees will take place during daytime working hours during the week. No activities are planned over weekends.

What to Expect

Environmental personnel will be on site to ensure tree removal is carried out in accordance with regulatory requirements. Noise from construction activity can be expected.

Safety

To ensure pedestrians and drivers remain safe when tree removal work is underway, construction crews may temporarily close traffic lanes and sidewalks. Sufficient traffic signage and alternative walkways will be provided during the construction time.

Contact

Please share your questions or comments about this work or the project in general by emailing ScarboroughSubwayExtension@Metrolinx.com or calling (416) 202-7900.

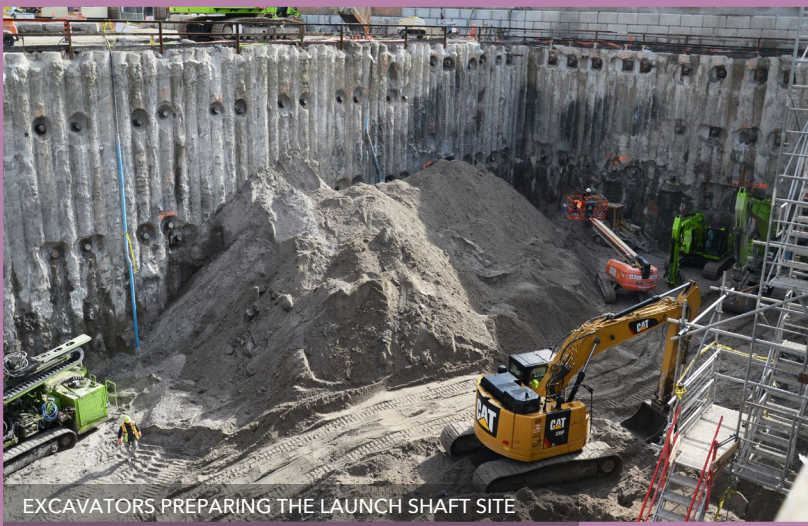
CONSTRUCTION



AERIAL VIEW OF EXCAVATION AT LAUNCH SHAFT SITE



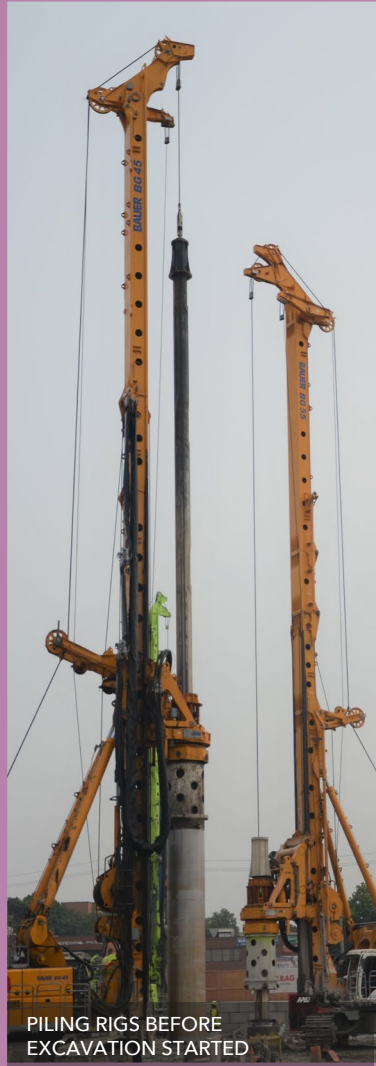
SIGNAGE AT THE LAUNCH SHAFT SITE



EXCAVATORS PREPARING THE LAUNCH SHAFT SITE



DEMOLITION AT THE EXTRACTION SHAFT



PILING RIGS BEFORE EXCAVATION STARTED

SCARBOROUGH SUBWAY EXTENSION'S TBM



DECEMBER 2021 - TBM ARRIVES IN PORT OF OSHAWA



DECEMBER 2021 - PARTS OF THE TBM BEING UNLOADED FROM THE SHIP



JANUARY 2022- PARTS OF THE TBM BEING TRANSPORTED TO SITE



MEET THE NEW
SCARBOROUGH SUBWAY EXTENSION
TUNNEL BORING MACHINE.

DIGGY SCARDUST - WINNING NAME



END OF JANUARY 2022 - TBM ASSEMBLY BEGINS

Station Location

Overhead Visuals

The Scarborough Subway Extension - Station Location Overhead Visuals

Station Facts

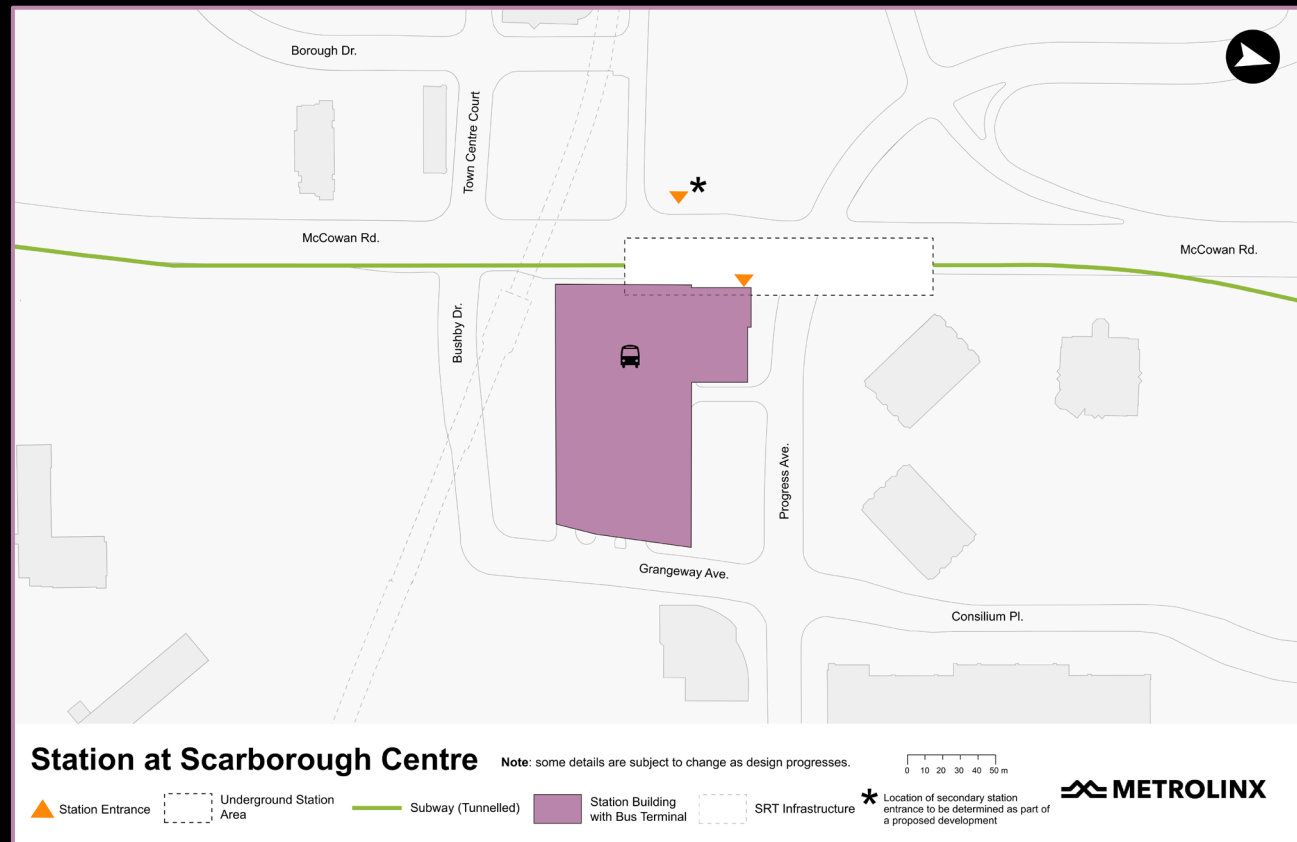
- **5,290** customers expected to use the station during busiest hour
- **4,480** transfers expected during busiest hour
- **3,470** jobs expected in the area



The Scarborough Subway Extension – Station Location Overhead Visuals

Station Facts

- **10,220** customers expected to use the station during busiest hour
- **7,340** transfers expected during busiest hour
- **25,980** jobs expected in the area



The Scarborough Subway Extension – Station Location Overhead Visuals

Station Facts

- **13,230** customers expected to use the station during busiest hour
- **12,000** transfers expected during busiest hour
- **5,995** jobs expected in the area



Station Design Approach

Subway Journey Customer Journey Touchpoints + Infrastructure

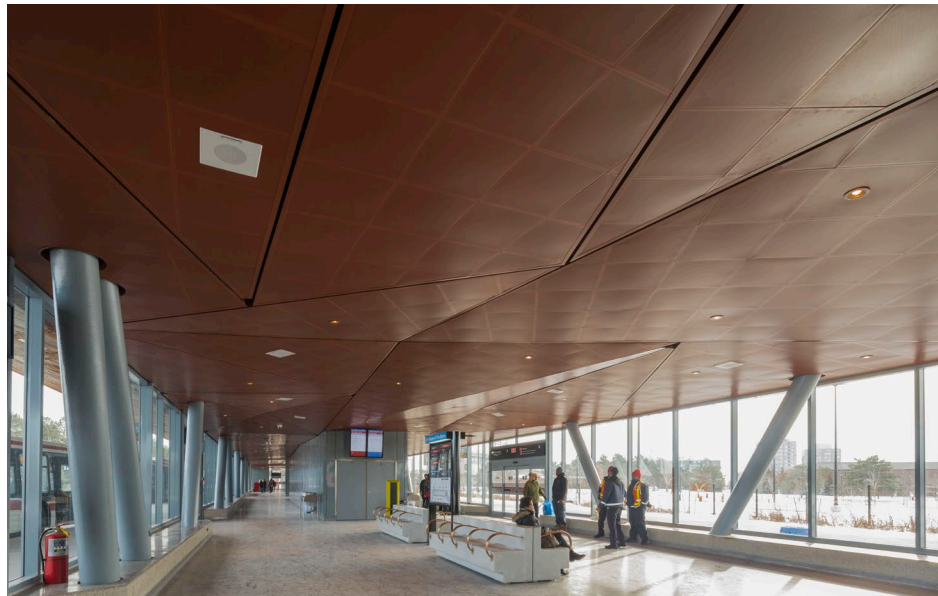
The SSE Station Design Approach is guided by the Metrolinx Subway Station Architecture Design Standards



Passenger Focus Design: **Safe**, Seamless, Intuitive and Reliable

Transit infrastructure areas shall be designed to be:

- ❑ Durable, long-lasting, timeless materials.
- ❑ Design to facilitate inter-modal connectivity.
- ❑ Future-proof for system growth.
- ❑ Design for ease of operation and access for maintenance of systems



Pioneer Village Station: TSGA and ALL Design

Passenger Focus Design: Safety and Accessibility

Stations will be designed to be accessible and safe for all transit users regardless of ability, applying the highest standards of universal design, including but not limited to:

- ❑ Providing direct, short, safe and convenient connections for all passengers
- ❑ Minimizing the vertical and horizontal distances between connections



Stations will use standard elements to make them familiar to passengers with **accessibility** challenges, including:

- ❑ Elevators
- ❑ Accessible path from street to platform
- ❑ Accessible routes identified
- ❑ Signage with accessible features
- ❑ Equipment mounted at accessible heights

Passenger Focus Design: Public Realm

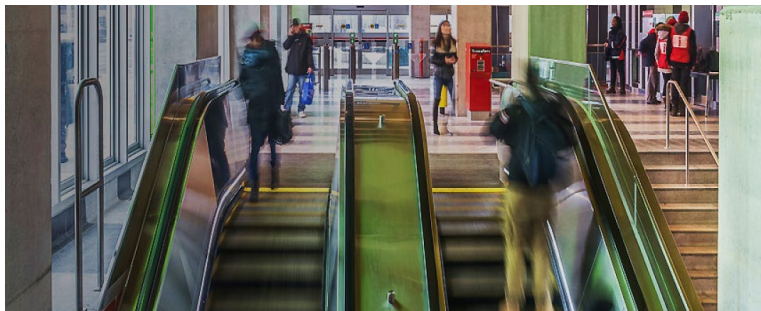
Transit infrastructure is a **key part of the public realm**.

- ❑ New stations will promote high-quality urban design, architecture and landscaping
- ❑ The stations will extend, enhance and support the public realm by creating destination points that will integrate seamlessly
- ❑ The stations will be designed with the community in mind and will fit into the areas they will serve



Victoria Park Station: IBI Group

Passenger Focus Design: Intuitive Wayfinding



Finch West Station: TSGA and ALL Design

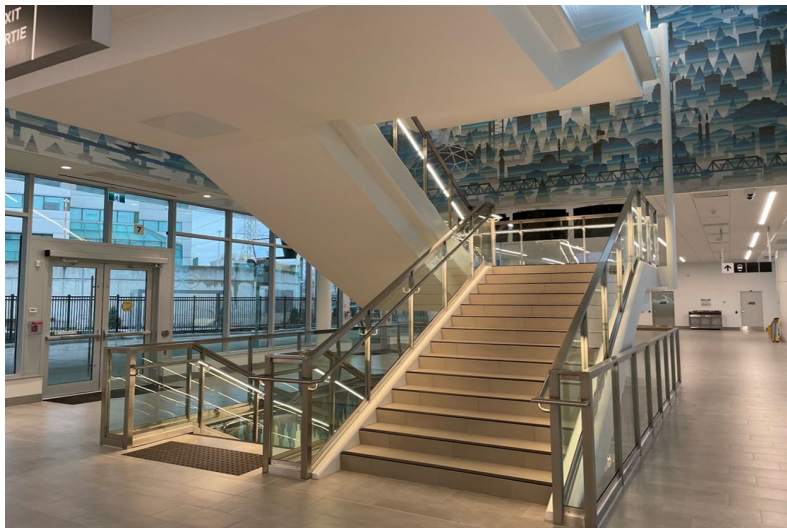
Using **simple and consistent** design of stations and infrastructure to make it easier for passengers to navigate, including the use of:

- ☐ Architectural designs that aid customers in wayfinding
- ☐ Simplified pedestrian routes and supported by clear, intuitive paths
- ☐ Landscaping
- ☐ Street furniture
- ☐ Canopies

The Scarborough Subway Extension - Station Design Approach

Next Steps

- ❑ First step in public engagement process
- ❑ More opportunities for community engagement to follow
- ❑ Public surveys for input on design elements that have some flexibility
- ❑ Development partner will be coming on board Fall 2022
- ❑ Collaborative design process under Progressive Design-Build Model



Kipling GO Station: EllisDon Design-Build Inc

The Scarborough Subway Extension – Contact Us

Your feedback is important to help us move this project forward in a way that strengthens the community. We are grateful for your input.

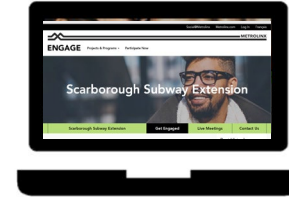
To stay up to date on upcoming virtual events and the latest Scarborough Subway Extension news, sign up for our e-newsletter at [Metrolinx.com/scarboroughsubway](https://metrolinx.com/scarboroughsubway)



scarboroughsubwayextension@metrolinx.com



416-202-7900



[Metrolinx.com/Scarboroughsubway](https://metrolinx.com/Scarboroughsubway)

Questions & Answers