

Scarborough Subway Extension

Virtual Open House

LAND ACKNOWLEDGEMENT

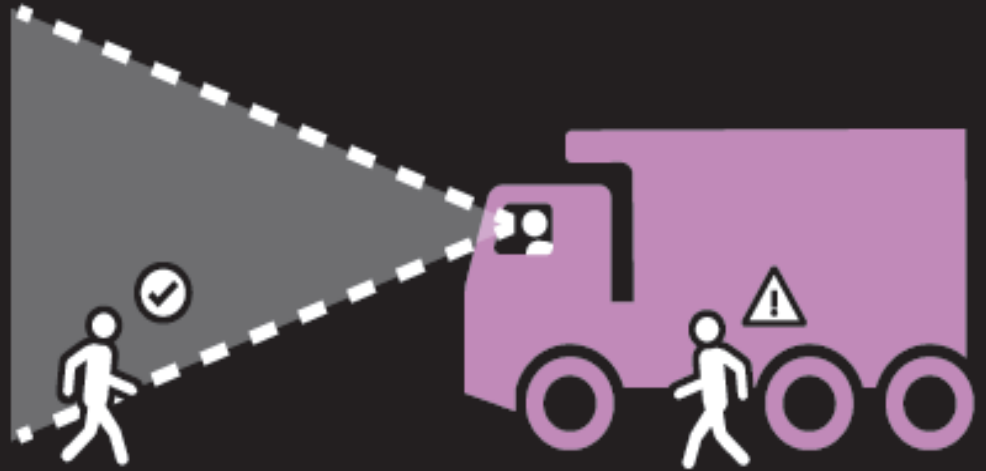
Metrolinx acknowledges that it operates on the traditional territory of Indigenous Peoples including the Anishnabeg, the Haudenosaunee and the Wendat peoples.

In particular these lands are covered by 20 Treaties, and we have a responsibility to recognize and value the rights of Indigenous Nations and Peoples and conduct business in a manner that is built on the foundation of trust, respect and collaboration.

Metrolinx is committed to building meaningful relationships with Indigenous Peoples, and to working towards meaningful reconciliation with the original caretakers of this land.

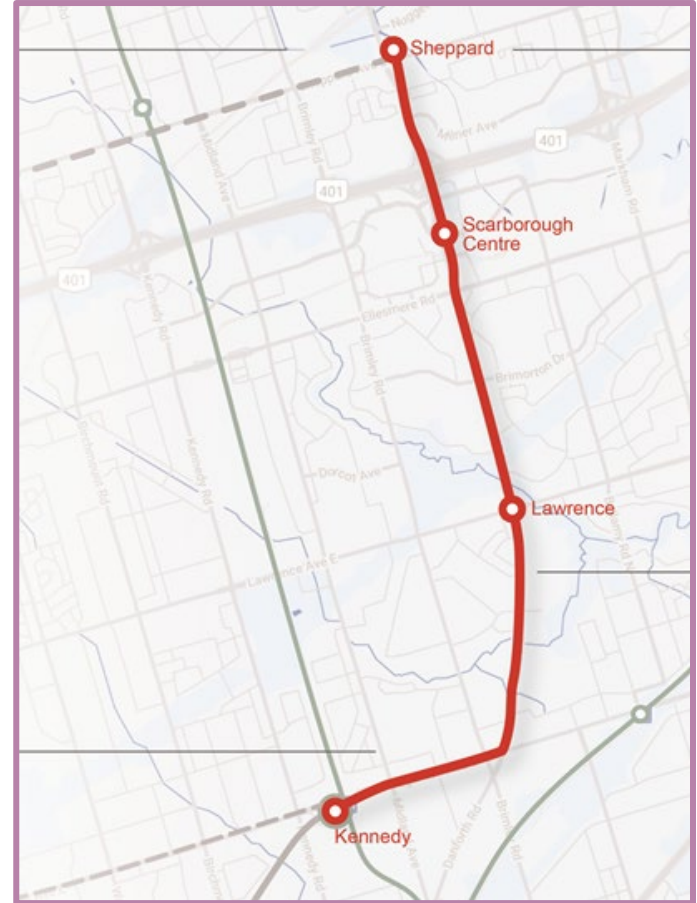
**If you can't see
the driver, they
can't see you.**

**BEWARE OF
BLIND SPOTS.**

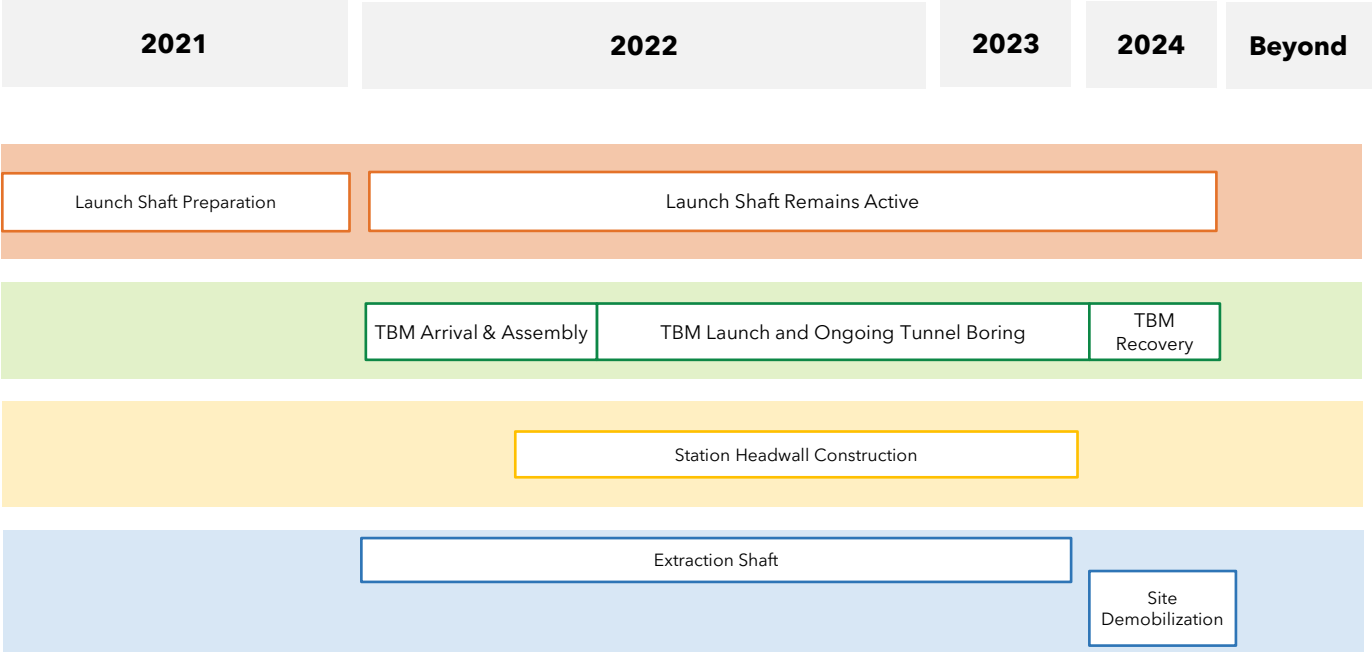


SSE UPDATE

- STRABAG was awarded the contract to design and build the tunnel for the subway extension.
- STRABAG completed the removal of the former car dealerships and is building the launch shaft for the tunnel boring machine (TBM) at the northeast corner of Sheppard Avenue and McCowan Road in Scarborough.
- The TBM will arrive later this year and will be put together at site and lowered underground. The TBM will create the tunnel for the line, eventually linking with Kennedy Station.
- Starting next year, STRABAG will start the construction of headwalls along the tunnel route.



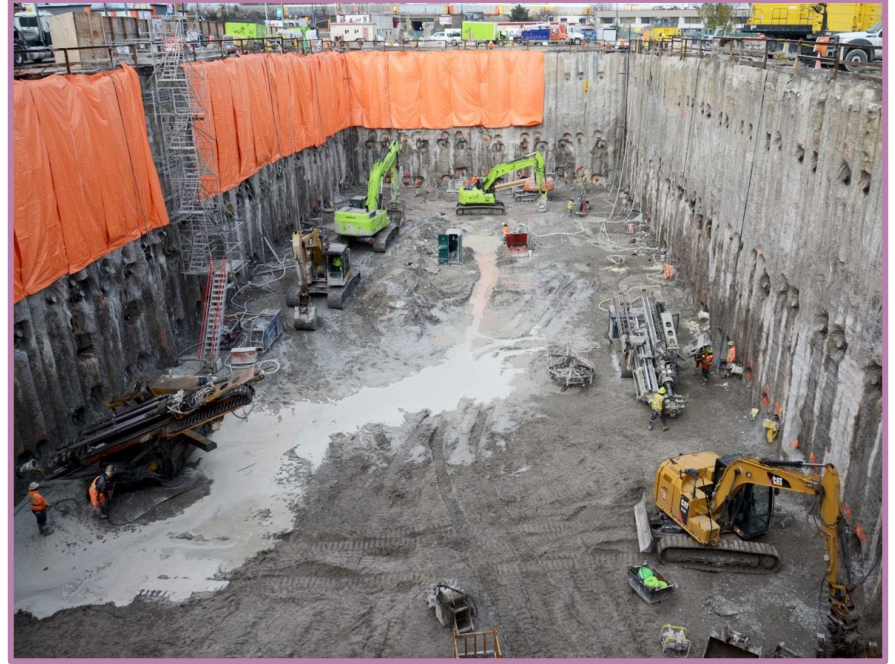
TUNNELLING TIMELINE



LAUNCH SHAFT PROGRESS



September 2021



November 2021

Extraction Site Preparation



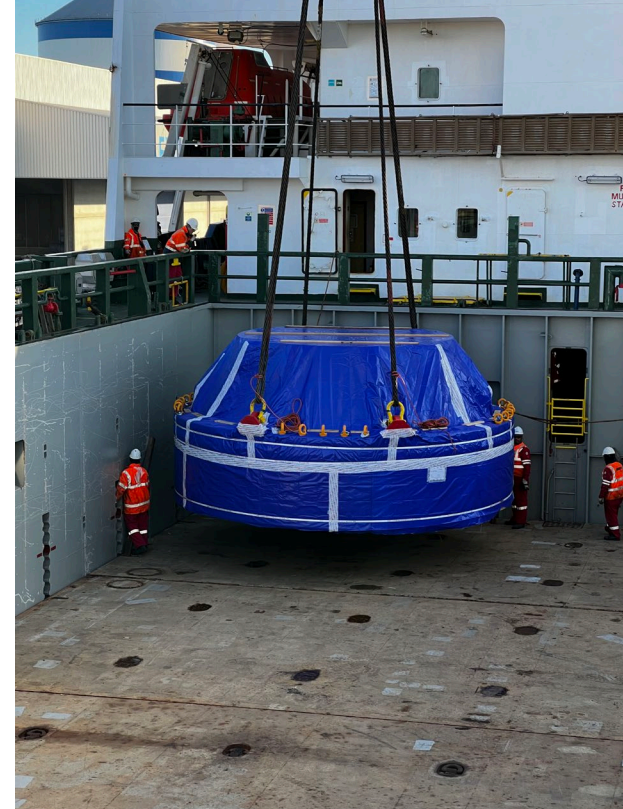
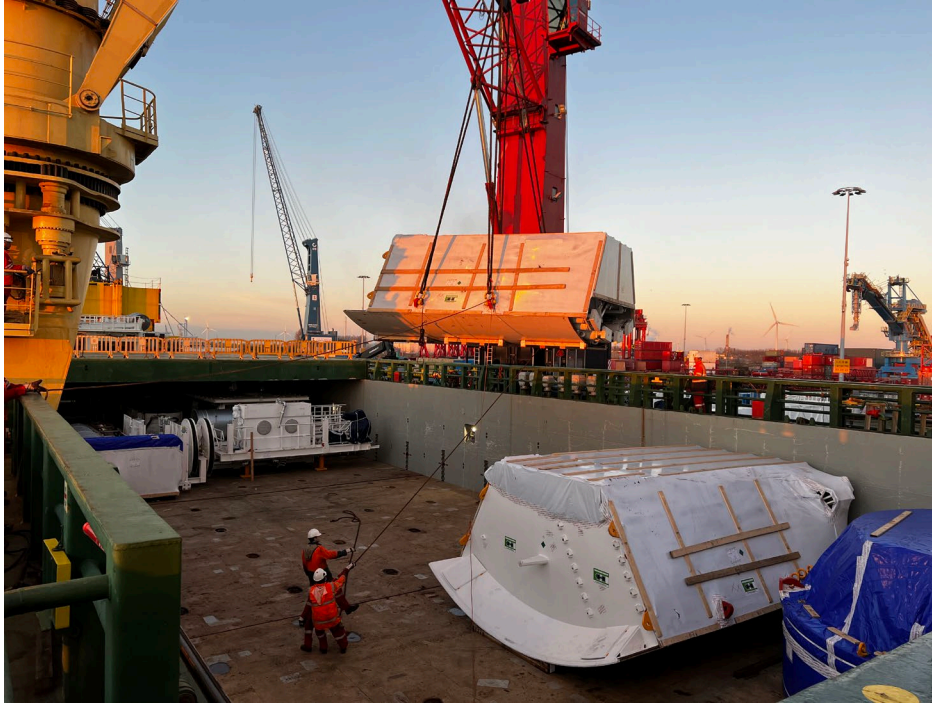
Midland Avenue & Eglinton Avenue East

TUNNEL BORING MACHINE



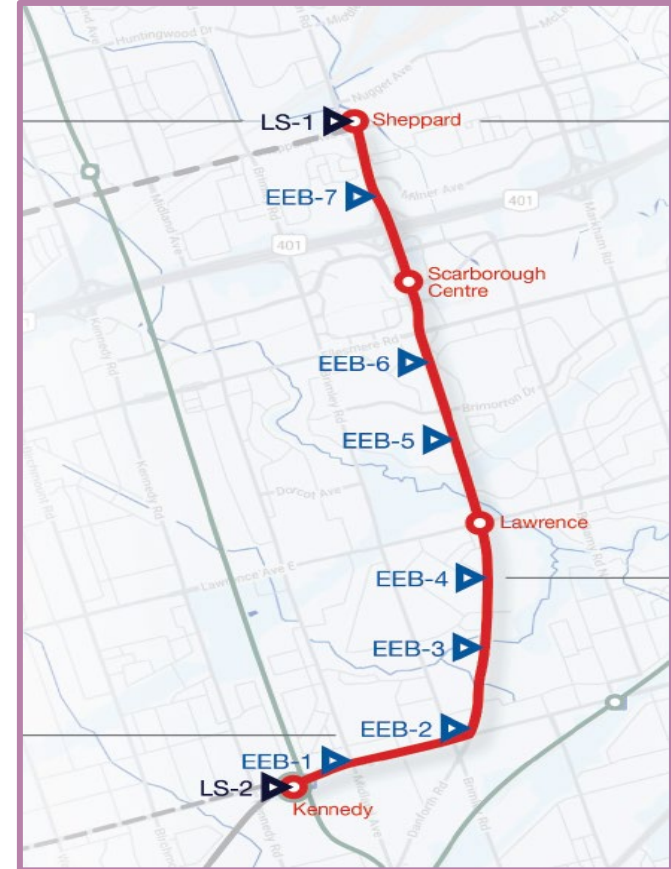
- The single TBM is on-route to Canada from Germany.
- It will travel by cargo ship on a 14-day journey across the Atlantic Ocean.
- The machine will arrive in Oshawa, Ontario and be placed on trucks for transport to the launch shaft site.

Tunnel Boring Machine



HEADWALL CONSTRUCTION

- A crucial part of the tunnel building process is the installation of headwalls.
- Headwalls are underground support structures that create the frame for stations and emergency exit buildings.
- Starting next year, headwalls will be built along the tunnel route. Construction of the first headwall is expected to start in April 2022.
- Headwalls must be built prior to the TBM drilling underground.



HEADWALL TIMELINE



Station
Headwalls

Sheppard Station

EEB 7

Scarborough City Centre

EEB 6

EEB 5

Lawrence Hospital

EEB 4

EEB 3

EEB 2

EEB 1

2022

Sheppard East Station

Emergency Exit Building 7

Scarborough Centre
Station

Emergency Exit Building 6

Emergency Exit Building 5

Lawrence East Station

2023

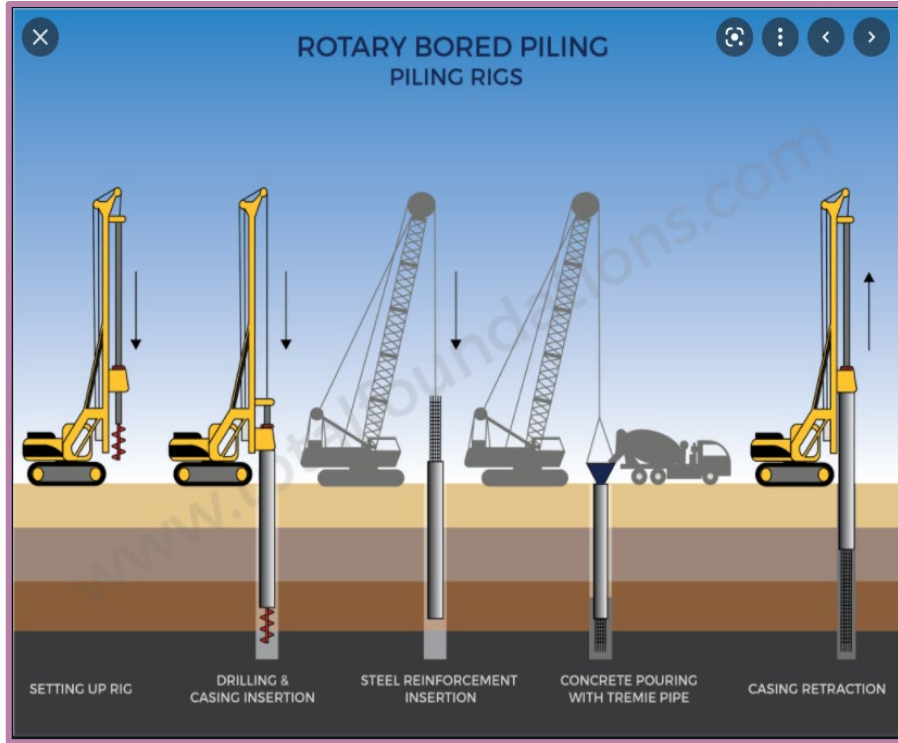
Emergency Exit Building 4

Emergency Exit Building 3

Emergency Exit Building 2

Emergency Exit Building 1

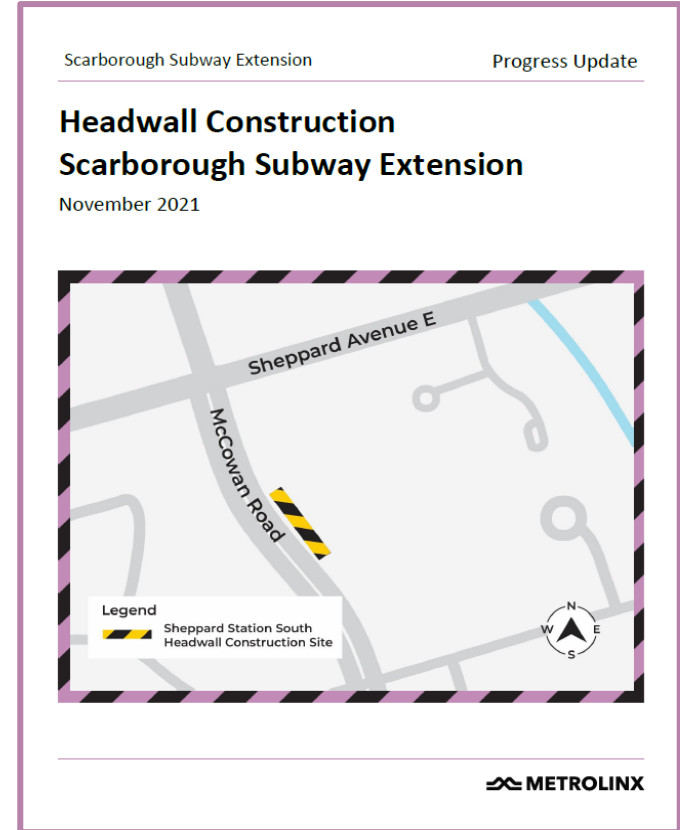
HEADWALL CONSTRUCTION – WHAT TO EXPECT



- Small construction crews will be working at the location sites during regular daytime hours.
- Activities will include setting up and securing the site, protecting trees, relocating utilities and drilling concrete piles.
- Once complete, the area will be restored to its previous condition.
- Noise and vibration from construction is expected. Every effort will be made to mitigate impacts.
- Mitigation measures are currently being reviewed by the project team.

HEADWALL CONSTRUCTION – COMMUNITY ENGAGEMENT

- Project teams have started informing residents and businesses about headwall construction.
- Construction notices will be distributed ahead of construction.
- Other engagement activities include:
 - Pop-up events throughout the project area
 - Door drops to residents and businesses
 - Signs regarding upcoming closures
 - Social media posts
 - In-person or virtual meetings/open houses
 - 24/7 phone line



CONTACT US

Your feedback is important to help us move this project forward in a way that strengthens the community. We are grateful for your input.

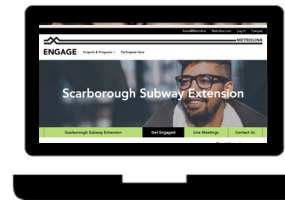
To stay up to date on upcoming virtual events and the latest Scarborough Subway Extension news, sign up for our e-newsletter at [Metrolinx.com/scarboroughsubway](https://metrolinx.com/scarboroughsubway)



scarboroughsubwayextesion@metrolinx.com



416-202-7900



Metrolinx.com/Scarboroughsubway