

Finch West LRT Project Construction Liaison Committee (CLC)

August 2022



AGENDA

- **Welcome and Introductions**
- **Safety Moment**
- **Land Acknowledgement**
- **Work Update**
 - Finch West Station
 - Utilities and Roadwork
 - Maintenance and Storage Facility
 - Hwy 400 Bridge
 - Humber College Stop
- **Communications and Community Engagement**



Safety Moment

Land Acknowledgement

METROLINX LAND ACKNOWLEDGEMENT

Let us take a moment to acknowledge we are on lands that have been, and continue to be, home to many Indigenous Peoples including the Anishnabeg, the Haudenosaunee and the Huron-Wendat peoples.

We are all Treaty people. Many of us have come here as settlers, as immigrants or involuntarily as part of the trans-Atlantic slave trade, in this generation, or generations past.

We acknowledge the historic and continued impacts of colonization and the need to work towards meaningful reconciliation with the original caretakers of this land.

We acknowledge that Metrolinx operates on territories and lands covered by many treaties that affirm and value the rights of Indigenous communities, Nations and Peoples.

We understand the importance of working towards reconciliation with the original caretakers of this land. At Metrolinx, we will conduct business in a manner that is built on a foundation of trust, respect and collaboration.

Review of Previous July 5, 2022 CLC Minutes and Action Items

REVIEW OF PREVIOUS CLC MEETING

Can you provide us with an update on the MUP? What safety and security features will be included, and under who's jurisdiction would it be under?

MUP work is underway. Tunnel portion is completed, and the concrete portals are being constructed and expected to be finished late summer 2022. Safety features include oversizing to enhance sightlines and lighting. There is also a pumping station with 3 separate high-powered pumps and excess storage capacity to ensure that flooding cannot occur.. The tunnel will be maintained by the CoT.

What can you discuss public ally about the recent incident at 10 Tobermory?

This incident is currently under investigation. We will share an update when we have more information.

There has been some north and south traffic release at Keele and Finch? Do you anticipate further closures at this intersection?

The traffic flow will remain the same for Fall 2022.



REVIEW OF PREVIOUS CLC MEETING

What is the capacity of the vehicles? Has it changed given that Finch is one of the busiest corridors with 46000+ daily riders (based on numbers provided by TTC)

The trains carry 120 people on average if all seated. During rush hour there will be four trains connected.

What about the capacity of the platform?

The capacity of the stops depends on their configuration. For example: Martin Grove stop is designed for 187 persons.

Milvan is a busy commercial route, I am concerned about the trucks detour. Can you investigate if it is appropriate for turning radius for large vehicles? Can more signage be added?

We ordered custom signs to place at specific locations to provide advanced decision points for larger trucks and general traffic that there will be no access to Finch Ave from Milvan during the time of this closure. The closure starts on August 8 for one month, approximately.



REVIEW OF PREVIOUS CLC MEETING

Is the Humber River trails open on both ends? Please check the south side and general accessibility of the trail

- We will check and get back to you shortly

Has Metrolinx engaged with developers along the corridor, especially in Finch/Weston area?

- We will look into it and get back to the group.



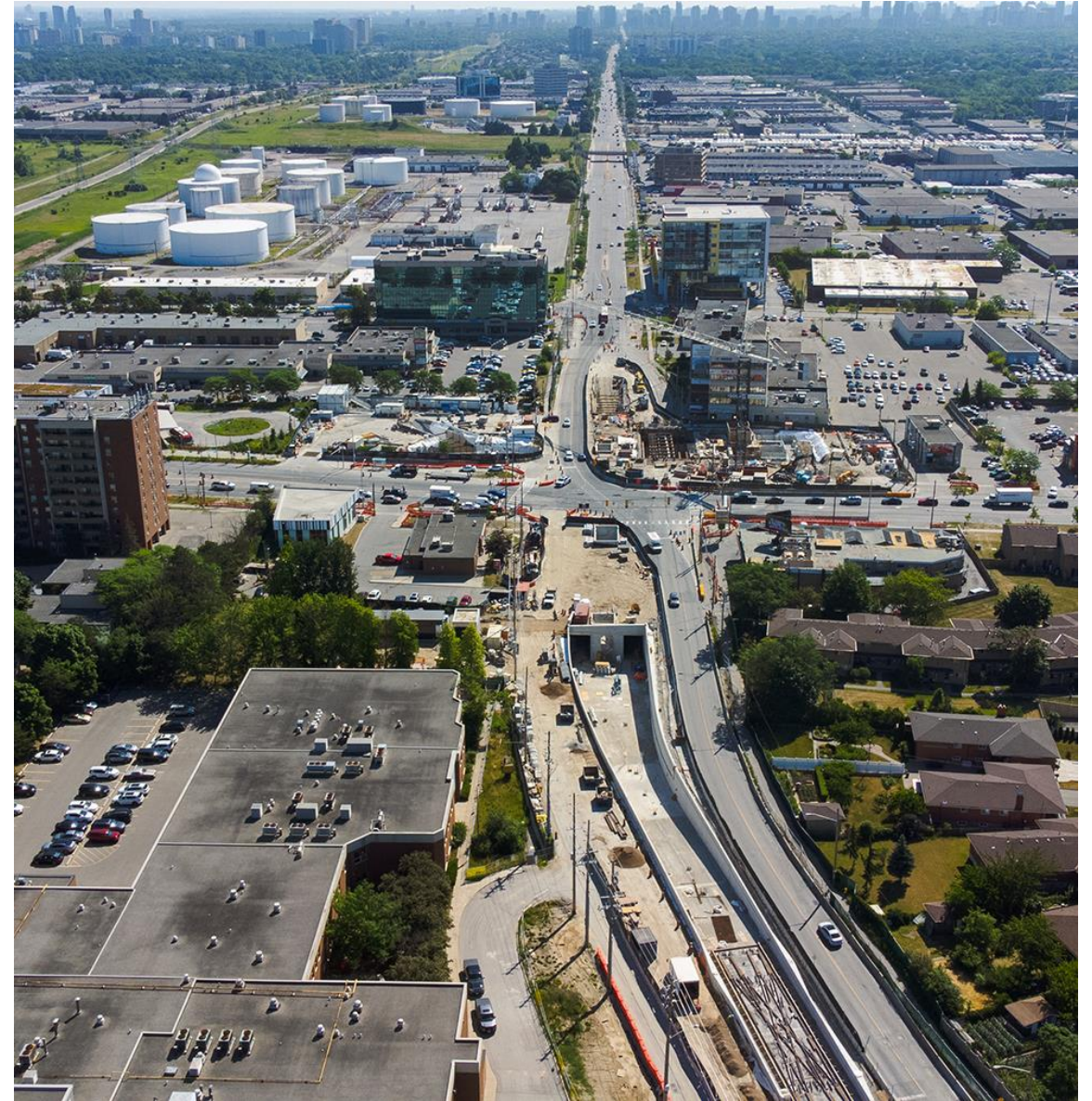
Finch West Station Update

CURRENT WORKS AND UPCOMING WORK

Finch West Station, Finch Avenue West at Keele Street

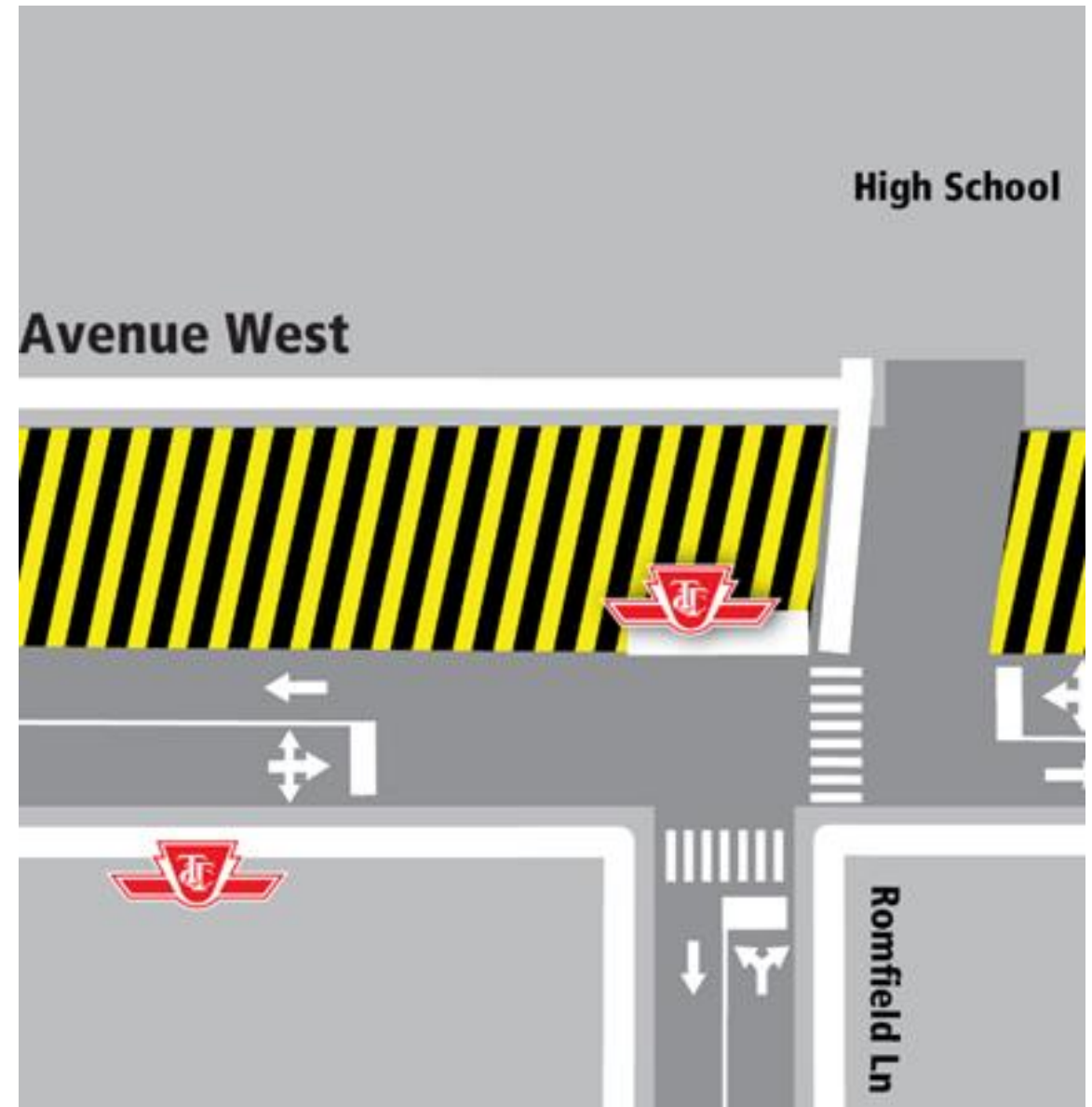
- Main entrance building backfill/structural steel works will begin soon
- Main box plate form slab is poured
- The current traffic plan will remain in place for next few months
- Overhead and underground electrical work continues.

Aerial Photo: Keele and Finch station and portals.



GUIDEWAY INSTALLATION ON FINCH AVENUE WEST AND ROMFIELD LANE

- Traffic staging for guideway work and stop platforms installation
- The work started at the beginning of July 2022, and will continue until late summer 2022, approximately.
- Guideway works will be done in two stages, starting with the east side of the intersection.
- Sidewalks and crosswalks may be closed periodically.
- Minor field modifications will occur when needed to complete work safely and minimize impact on the public.



Map: Traffic staging at the intersection of Finch Avenue West and Romfield Lane

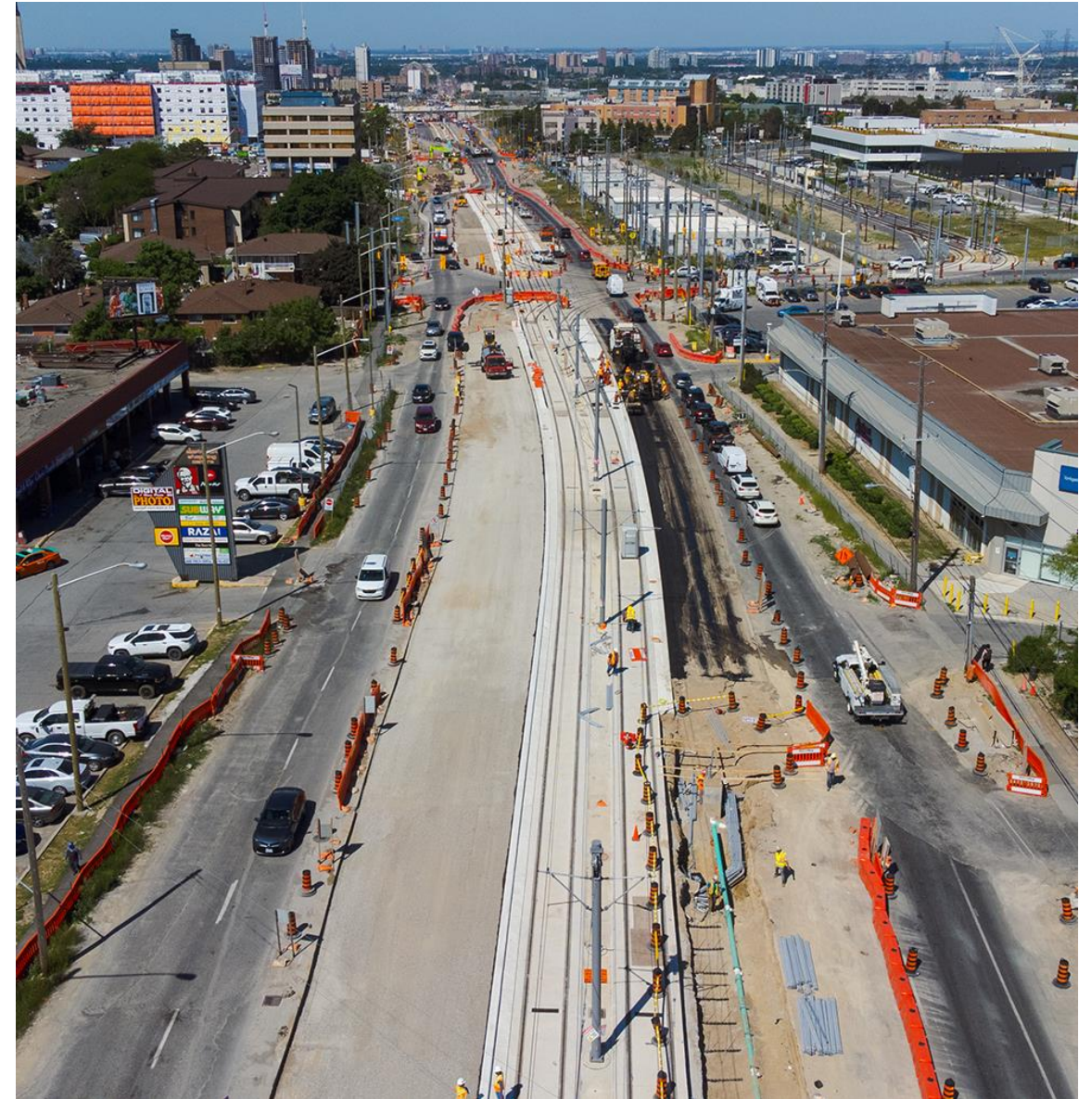
Keele Street to Norfinch Drive Corridor Work

CURRENT AND UPCOMING WORKS

From Keele Street to Jane Street

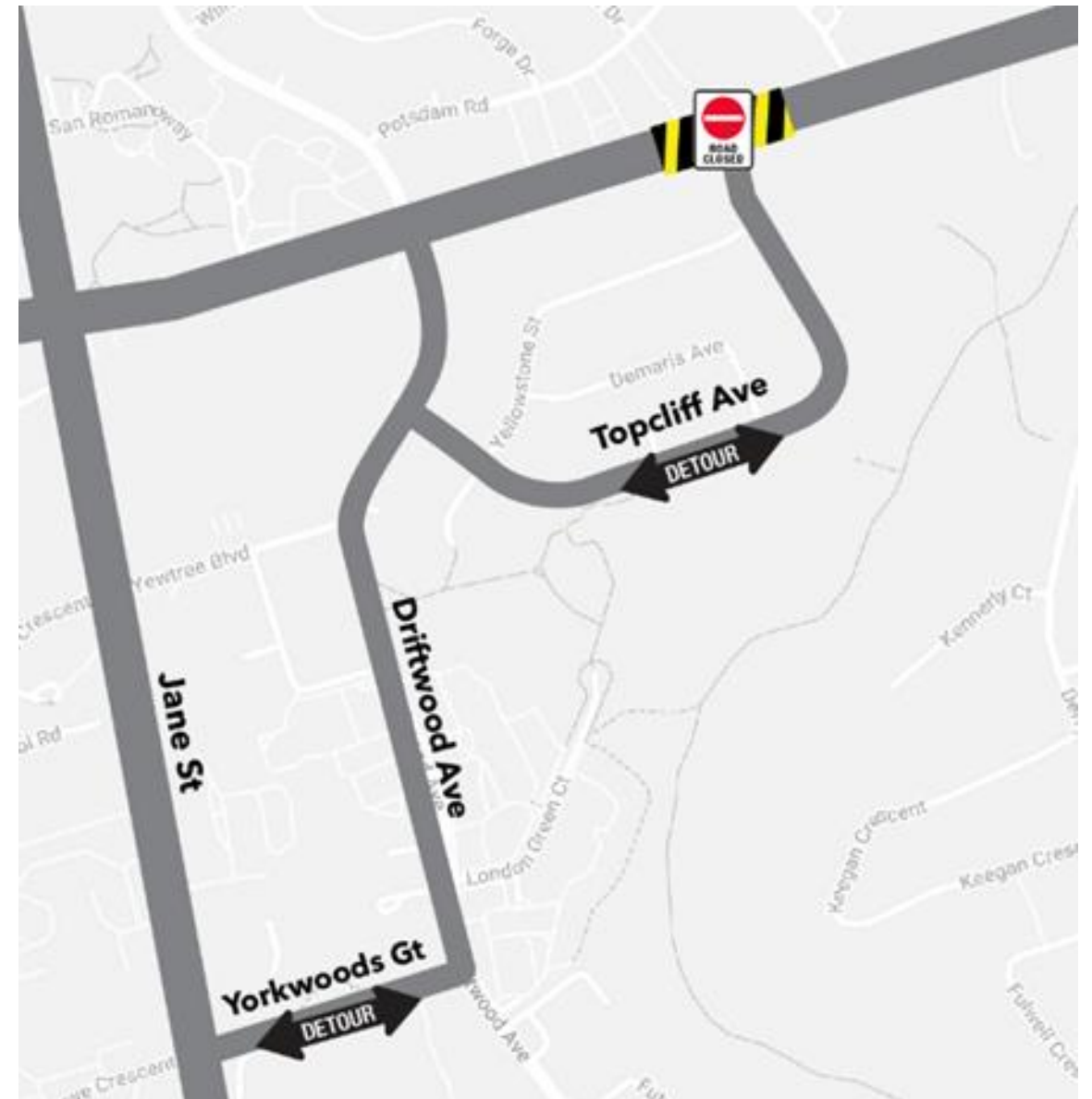
- Sidewalk placement between Romfield Drive and Sentinel Road. North side-complete. South side is ongoing
- Sidewalk placement between Sentinel Road and Driftwood Avenue is ongoing.
- Poles and OCS completion continues
- Driftwood and Tobermory stop platforms are completed. Sentinel and Jane stop platforms installation is almost complete.
- Final paving between Romfield Drive and Jane Street to follow

Photo: Aerial view of the intersection of Finch Avenue West and Jane Street looking west



TOPCLIFFE AVENUE ROADWAY RECONSTRUCTION. SOUTH SIDE.

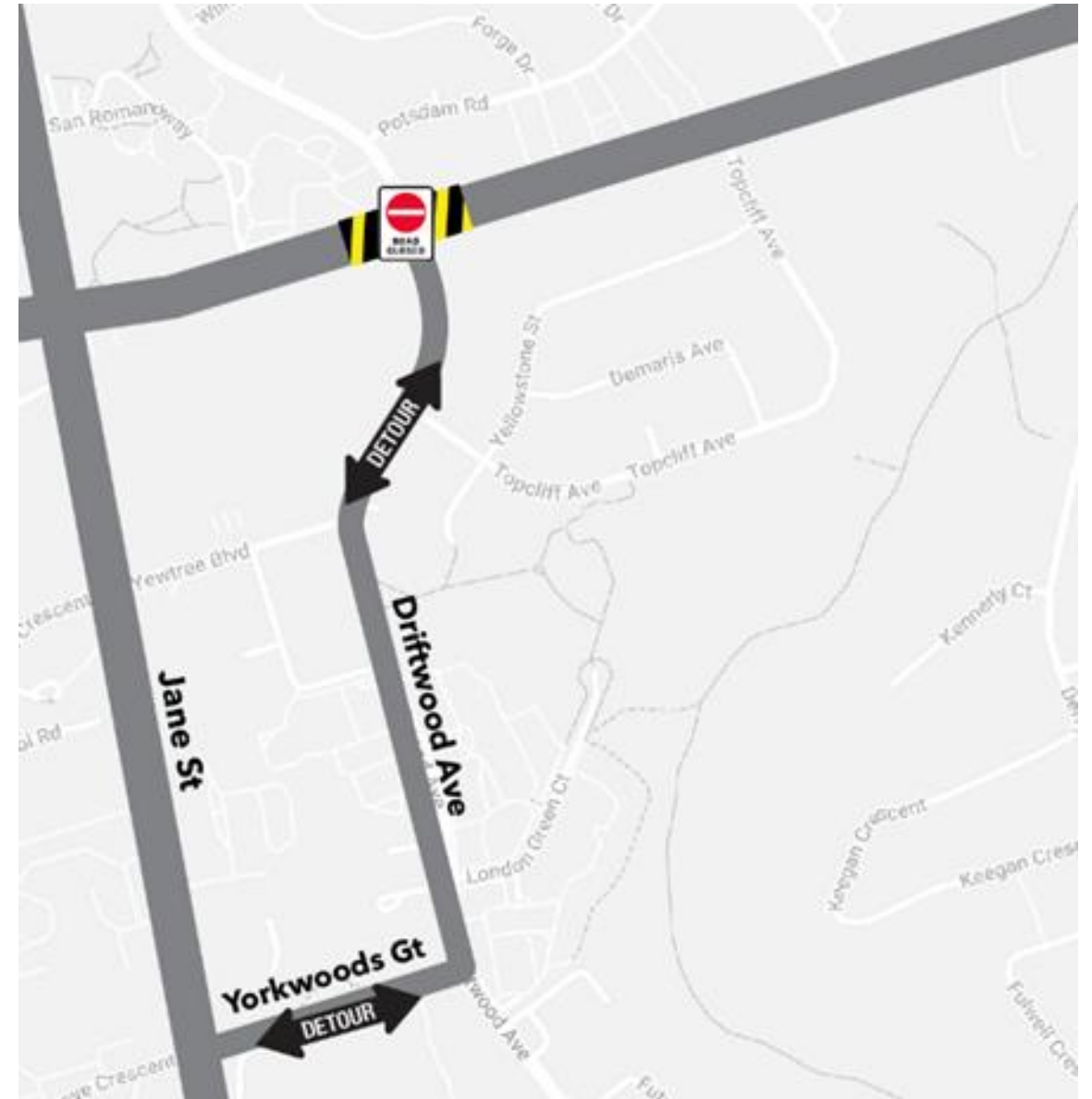
- Topcliffe Avenue is closed from August 8 until August 15, 2022
- Periodic sidewalk and crosswalk closures.
- Temporary relocation of TTC bus stops, if needed
- Minor field modifications may occur when needed to complete work safely and minimize impact on the public.
- The notice were delivered by the couriers to the impacted properties.



Map: Traffic staging at the intersection of Finch Avenue West and Sentinel Road

DRIFTWOOD AVENUE ROADWAY RECONSTRUCTION. SOUTH SIDE.

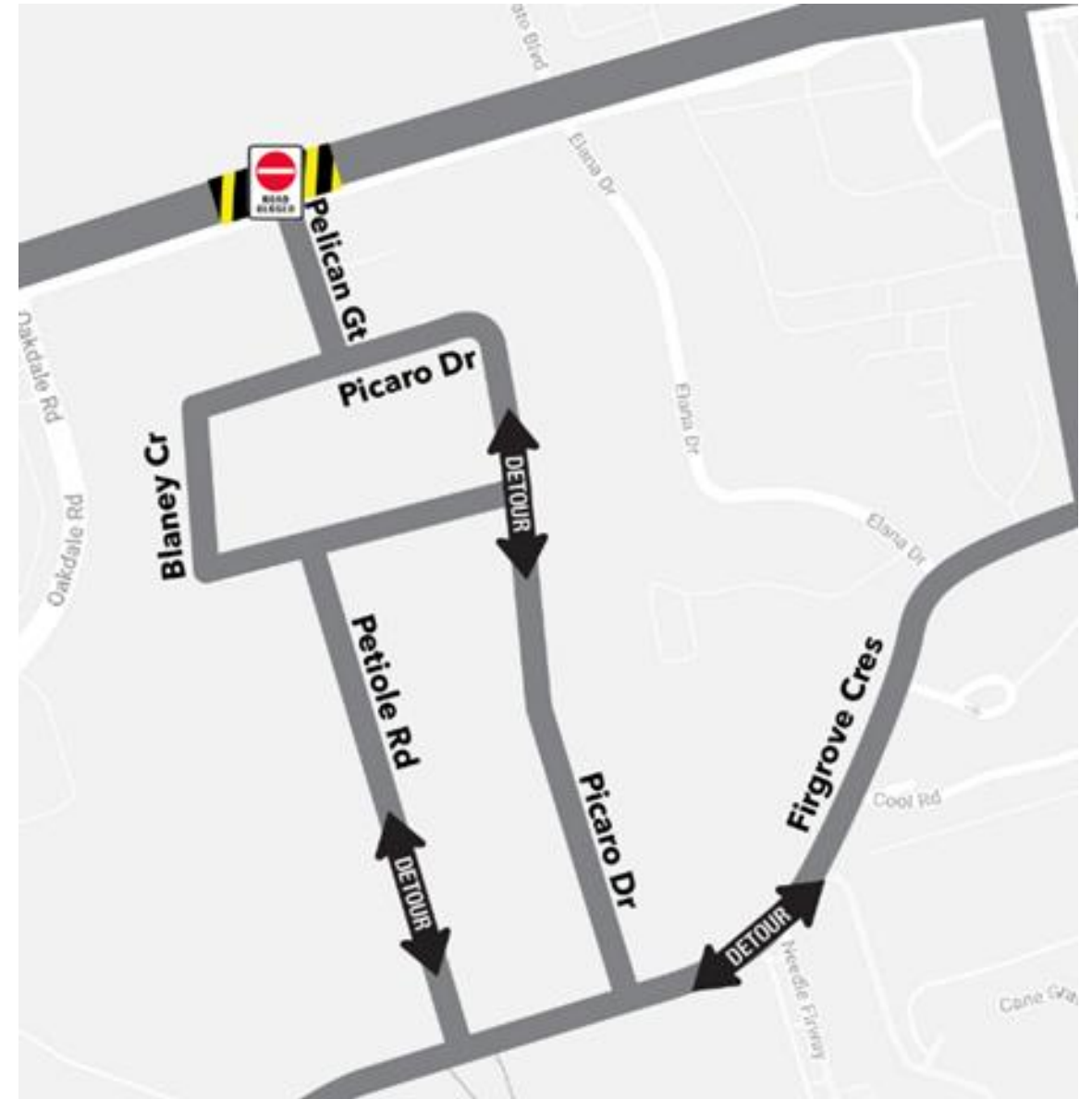
- Driftwood Avenue is closed from August 15 until August 22, 2022
- Periodic sidewalk and crosswalk closures.
- Temporary relocation of TTC bus stops, if needed
- Minor field modifications may occur when needed to complete work safely and minimize impact on the public.
- The notice were delivered by the couriers to the impacted properties.



Map: Traffic staging at the intersection of Finch Avenue West and Sentinel Road

PELICAN GATE ROADWAY RECONSTRUCTION. SOUTH SIDE.

- Pelican Gate is closed from August 2 until August 9, 2022
- Periodic sidewalk and crosswalk closures.
- Temporary relocation of TTC bus stops, if needed
- Minor field modifications may occur when needed to complete work safely and minimize impact on the public.
- The notice were delivered by the couriers to the impacted properties.



Map: Traffic staging at the intersection of Finch Avenue West and Sentinel Road

Maintenance and Storage Facility

ONGOING ACTIVITIES

In Progress:

- First LRV has run approximately 800 km
- Both LRVs have completed their high-speed testing (acceleration and braking).
- We are awaiting the delivery of two more trains in August 2022.

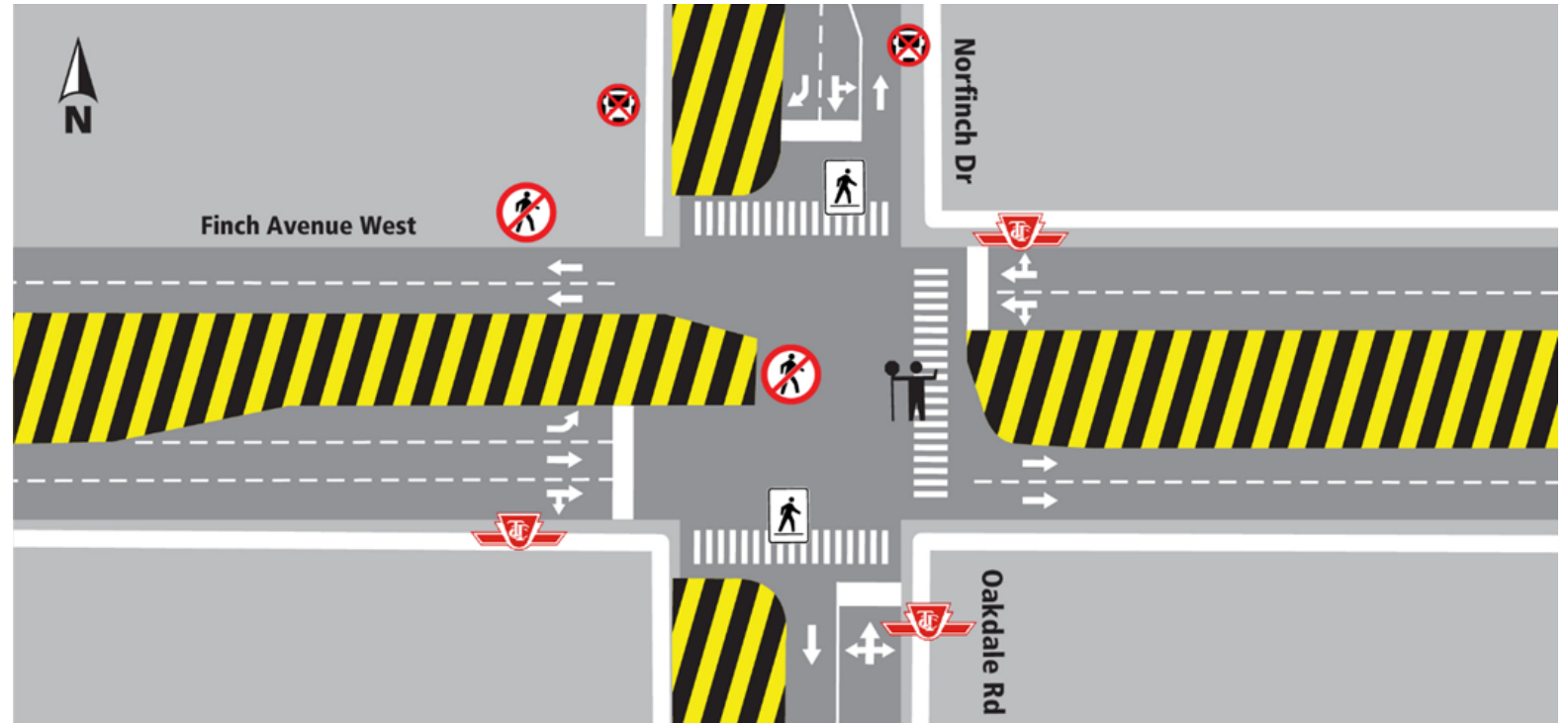
Photo: Aerial view of the Maintenance and Storage Facility



Norfinch Drive to Weston Road

GUIDEWAY INSTALLATION ON FINCH AVENUE WEST AND NORFINCH DRIVE.

- Guideway installation work started in Summer of 2022 (east and west side)
- The work also includes the installation of permanent traffic signals, at grade stops and final paving.
- Bus stops will be relocated, if necessary.
- There will be a Paid Duty Officer, flaggers, and detour signs to direct traffic, as needed.



Intersection of Finch Avenue West and Norfinch Drive.

CURRENT AND UPCOMING WORKS- HIGHWAY 400

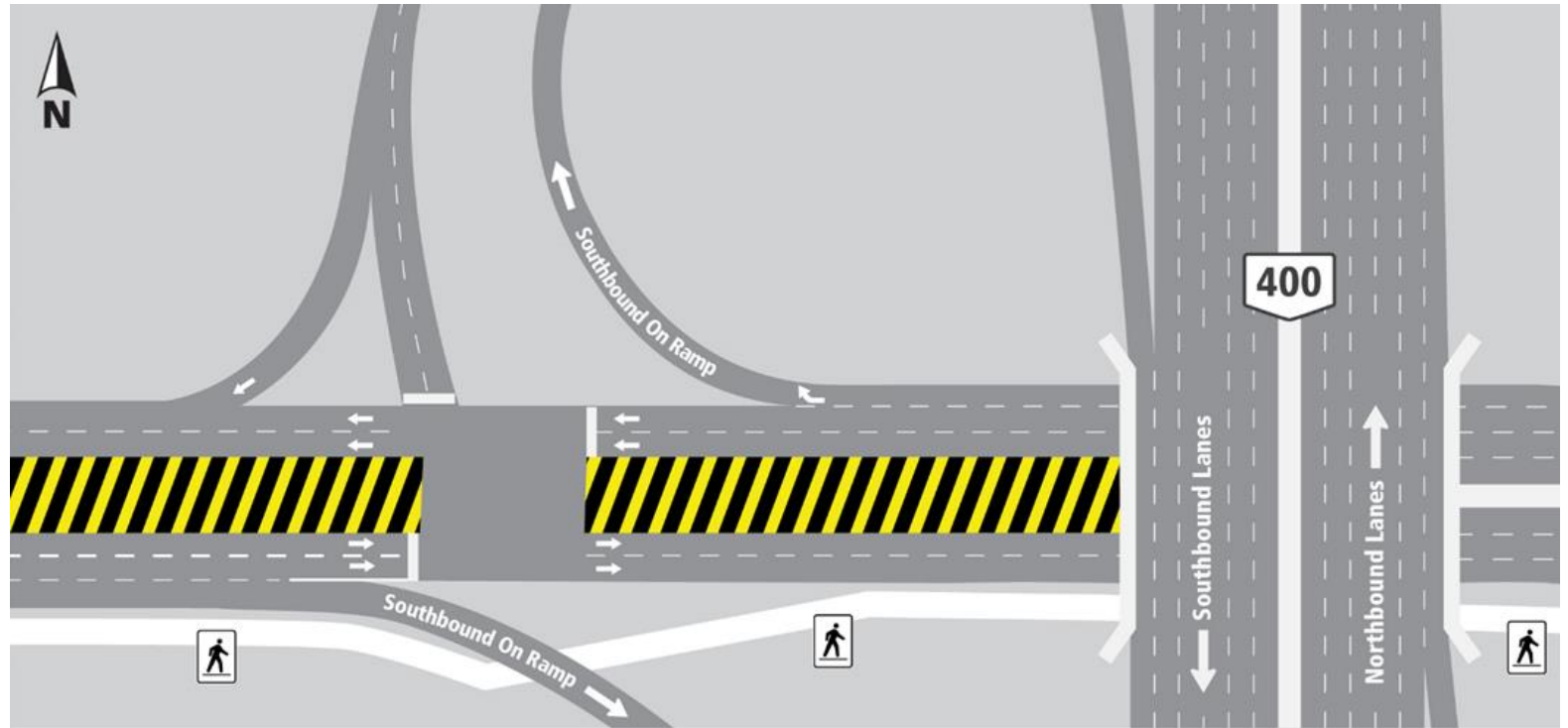
- Road and guideway work is underway
- Wet utilities installation is ongoing
- Multi Use Purpose (MUP) tunnel work has been resumed with pump station equipment delivery
- The construction work will continue until late summer
- Periodic ramp closures are probable
- Occasional night work occurs from 6 pm to 7 am. Additional notices will be provided as needed



Map: Aerial view of HWY 400 and Finch Avenue West

GUIDEWAY INSTALLATION ON FINCH AVENUE WEST AND HIGHWAY 400.

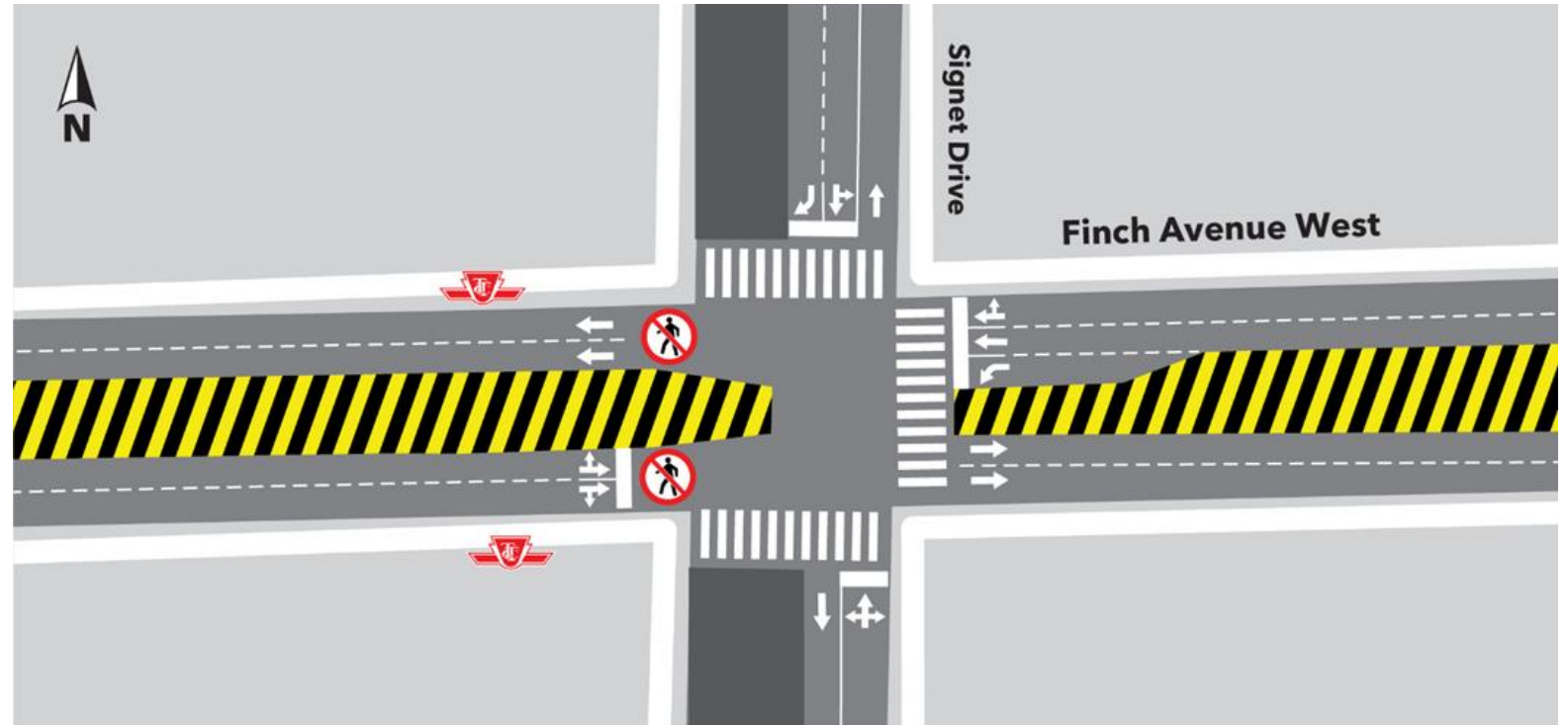
- The work at the intersection started in April 2022 and is expected to be finished later in Fall 2022.
- Periodic sidewalk and crosswalk closures.
- Minor field modifications may occur when needed to complete work safely and minimize impact on the public.
- There will be a Paid Duty Officer, flaggers, and detour signs to direct traffic, as needed.



Intersection of Finch Avenue West and Highway 400.

ROAD WIDENING AND GUIDEWAY INSTALLATION ON FINCH AVENUE WEST AND SIGNET DRIVE

- The work at the intersection started in Summer 2022.
- The work is done in two stages:
 - East section, Duration - 6 weeks
 - West section, Duration - 6 weeks
- Rolling temporary lane closures
- Periodic sidewalk and crosswalk closures.
- Minor field modifications may occur when needed to complete work safely and minimize impact on the public.



Map: Intersection of Finch Avenue West and Signet Drive.

Weston Road to Highway 27

WESTON ROAD AND FINCH AVENUE WEST INTERSECTION

Ongoing and Upcoming Works

- Underground excavation continues.
- Storm and sanitary sewer work on the south side and hydro duct bank crossing north to south is ongoing.
- Next stage is utility works in the middle of the intersection.
- Overhead and underground electrical work started in April for six months, approximately.



Photo: Intersection of Finch Avenue West and Weston Road looking west

GUIDEWAY INSTALLATION ON FINCH AVENUE WEST AND JAYZEL DRIVE

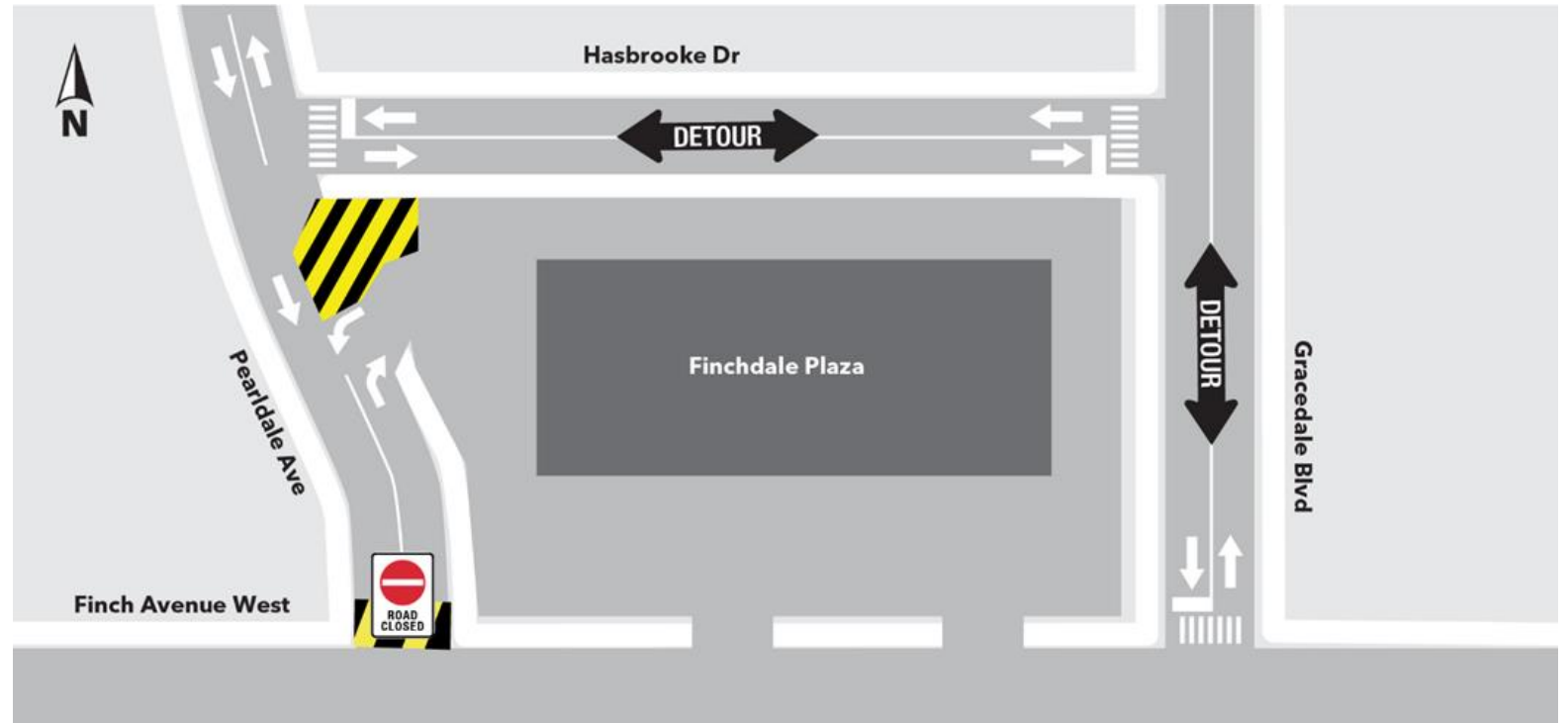
- Crews will be working on the guideway Installation at the Intersection of Finch Avenue West and Jayzel Drive.
- It is scheduled to start on September 26, 2022, and will last for six (6) weeks, approximately.
- East crosswalk is closed. Periodic sidewalk and crosswalk closures
- Minor field modifications may occur when needed to complete work safely and minimize impact on the public.
- There will be a Paid Duty Officer, flaggers, and detour signs to direct traffic, as needed



Intersection of Finch Avenue West and Jayzel Drive.

TRACTION POWER SUBSTATION 4 (TPSS) WORK ON FINCH AVENUE WEST AND PEARLDALE AVENUE.

- The work is scheduled to start on August 8, 2022, for two months, approximately. It will be done in three stages.
- Pearldale Avenue closure is expected to start at the beginning of September 2022 for 5 weeks, approximately.
- Minor field modifications may occur when needed to complete work safely and minimize impact on the public.
- There will be a Paid Duty Officer, flaggers, and detour signs to direct traffic, as needed.



Map of the intersection of Pearldale Avenue and Finch Avenue West.

WET AND DRY UTILITIES WORK FROM MILVAN DRIVE TO ISLINGTON AVENUE

- Overhead and underground electrical work from Pearldale Avenue to Weston Road started in March 2022 and will continue until Fall, approximately.
- Finchdale plaza retaining wall is completed. Back filling is ongoing.
- Hydro work, dry and wet utilities relocation continues.



Photo: Finch Avenue West and Pearldale Avenue, looking east

HUMBER RIVER BRIDGE REHABILITATION - FINCH AND ISLINGTON AVENUE INTERSECTION

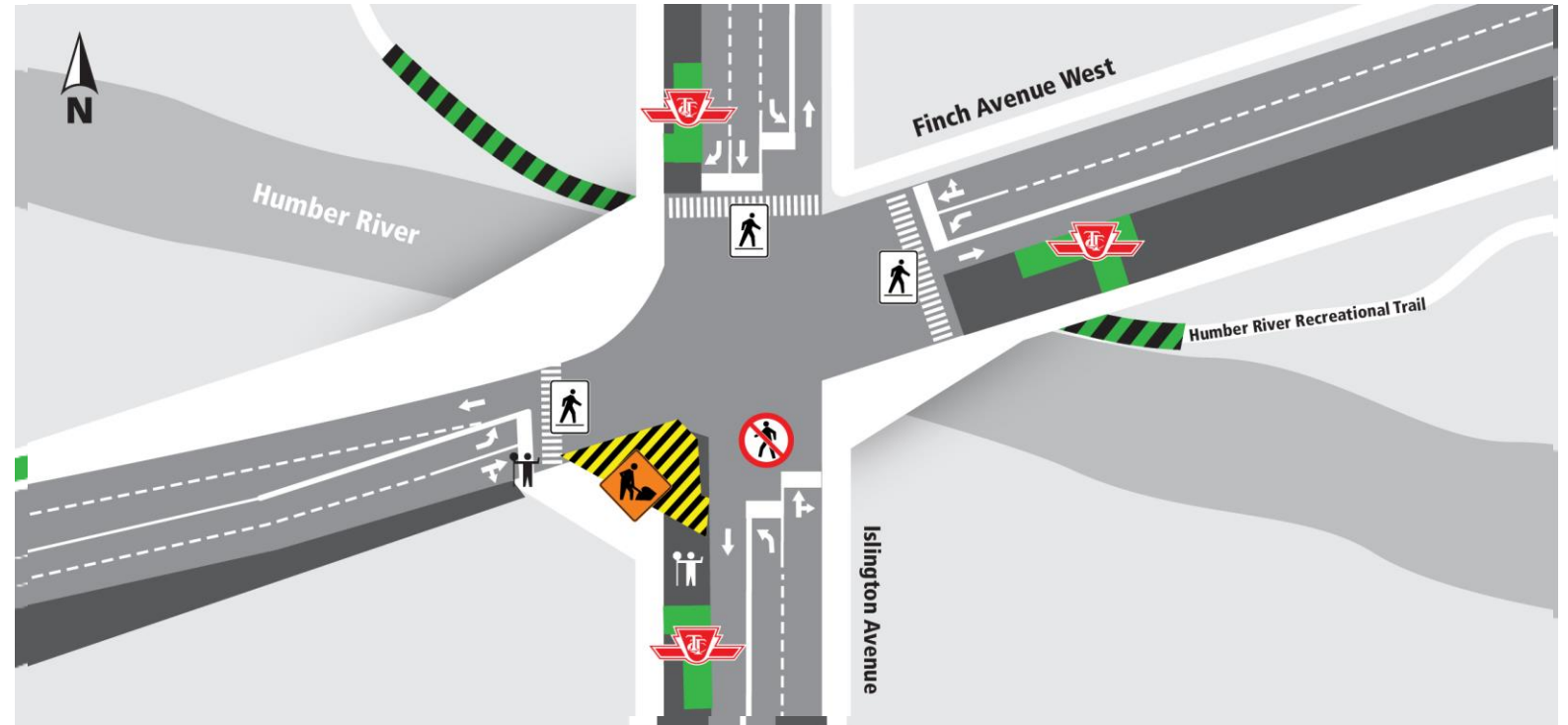
- Ongoing since early April 2021 for 18 months, approximately. Quadrants 1, 2 and 3 are complete.
- The work is ongoing in the south-west quadrant (4). The work is scheduled to be finished by the end of Summer 2022.



Photo: Aerial view Finch Avenue West and Islington Avenue, looking west

HUMBER RIVER BRIDGE REHABILITATION AND OTHER ACTIVITIES

- Construction works at zone 4 is underway and it scheduled to be finished late Summer 2022
- Islington eastbound and westbound stop platforms installation is ongoing
- Bus stops will be relocated, if necessary
- There will be a Paid Duty Officer, flaggers, and detour signs to direct traffic, as needed



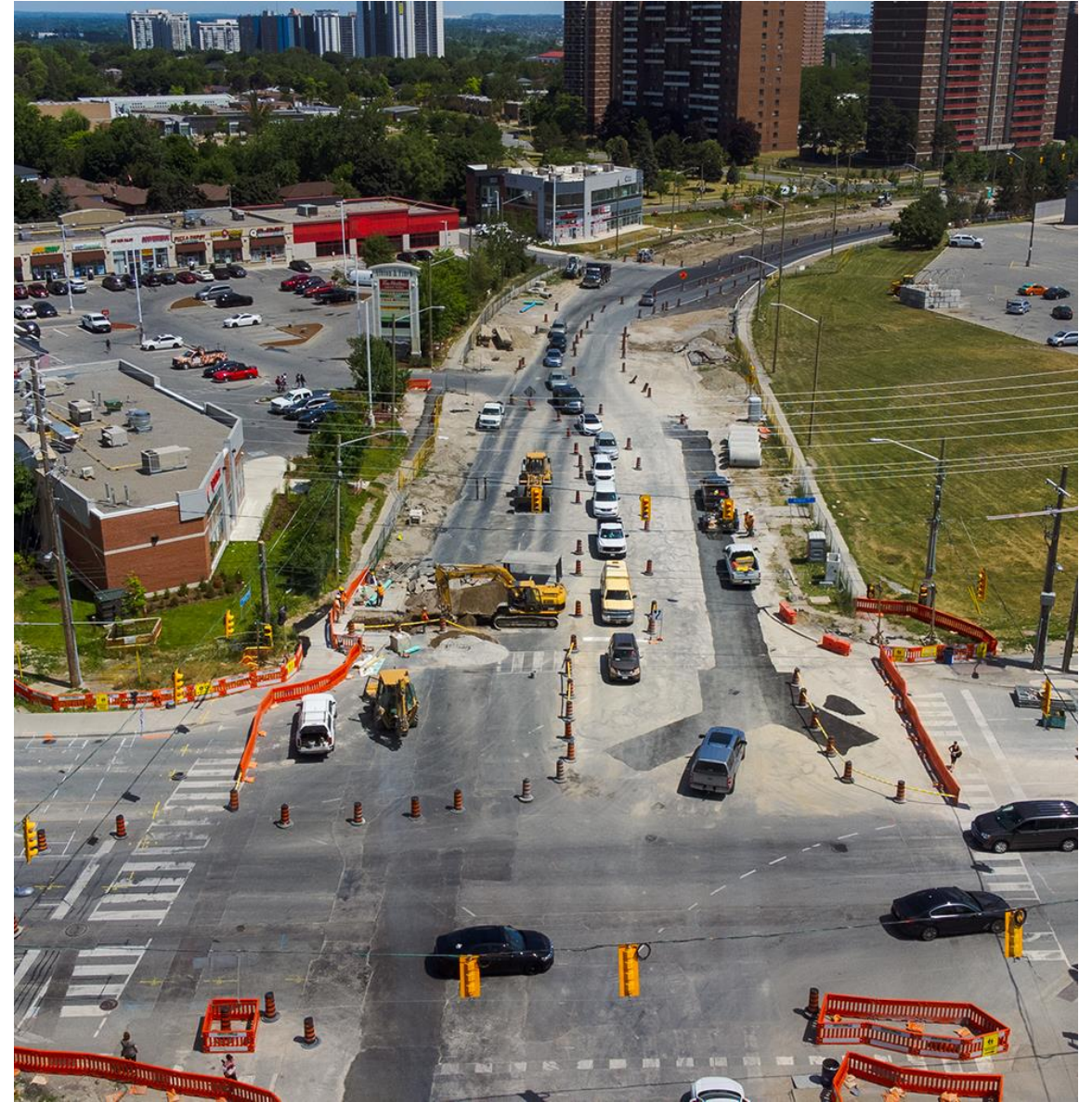
Intersection of Finch Avenue West and Islington Avenue.

CURRENT AND UPCOMING WORKS

Albion Road and Finch Avenue West

- Wet utility installation is ongoing until Fall 2022, approximately.
- Road widening on Finch Avenue West between Albion Road and Martin Grove Road continues.
- Community members will be notified of any significant construction related impacts, separately.

Photo: Intersection of Finch Avenue West and Albion Road looking west.



GUIDEWAY INSTALLATION ON FINCH AVENUE WEST AND KIPLING AVENUE.

- Guideway installation work will start in Fall of 2022 (east and west side)
- The work also includes the installation of permanent traffic signals, at grade stops and final paving.
- Bus stops will be relocated, if necessary.
- There will be a Paid Duty Officer, flaggers, and detour signs to direct traffic, as needed.



Intersection of Finch Avenue West and Kipling Avenue.

GUIDEWAY INSTALLATION ON FINCH AVENUE WEST AND ALBION ROAD.

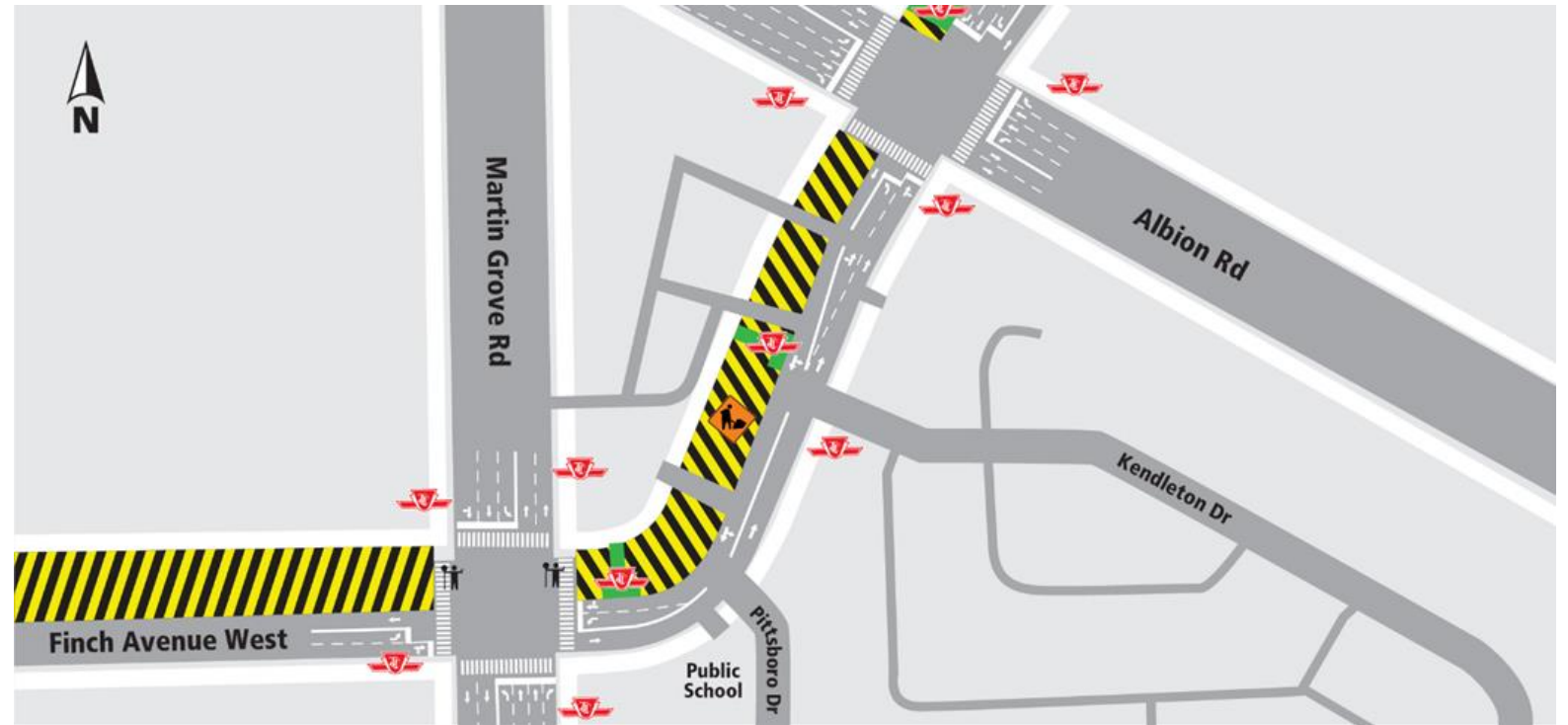
- Guideway installation work will start in Fall of 2022 (east and west side)
- The work also includes the installation of permanent traffic signals, at grade stops and final paving.
- Bus stops will be relocated, if necessary.
- There will be a Paid Duty Officer, flaggers, and detour signs to direct traffic, as needed.



Intersection of Finch Avenue West and Albion Road.

GUIDEWAY WORKS ON FINCH AVENUE WEST AND MARTIN GROVE ROAD.

- Guideway installation on Finch Avenue West and Martin Grove Road (East /West Side) is ongoing.
- The work on the west side is scheduled to start late Summer for six weeks, approximately
- Bus stops will be relocated, if necessary.
- There will be a Paid Duty Officer, flaggers, and detour signs to direct traffic, as needed.



Map: Intersection of Finch Avenue West and Martin Grove Road .

CURRENT AND UPCOMING WORKS

Martin Grove Road to Silverstone

- The road widening and guideway work is ongoing.
- Final paving between Martin Grove Road and Silverstone Drive is tentatively scheduled to start late Summer 2022.
- Overhead and underground electrical work from Damascus Drive to Martin Grove Road is ongoing.
- Community members will be notified of any significant construction related impacts, separately.

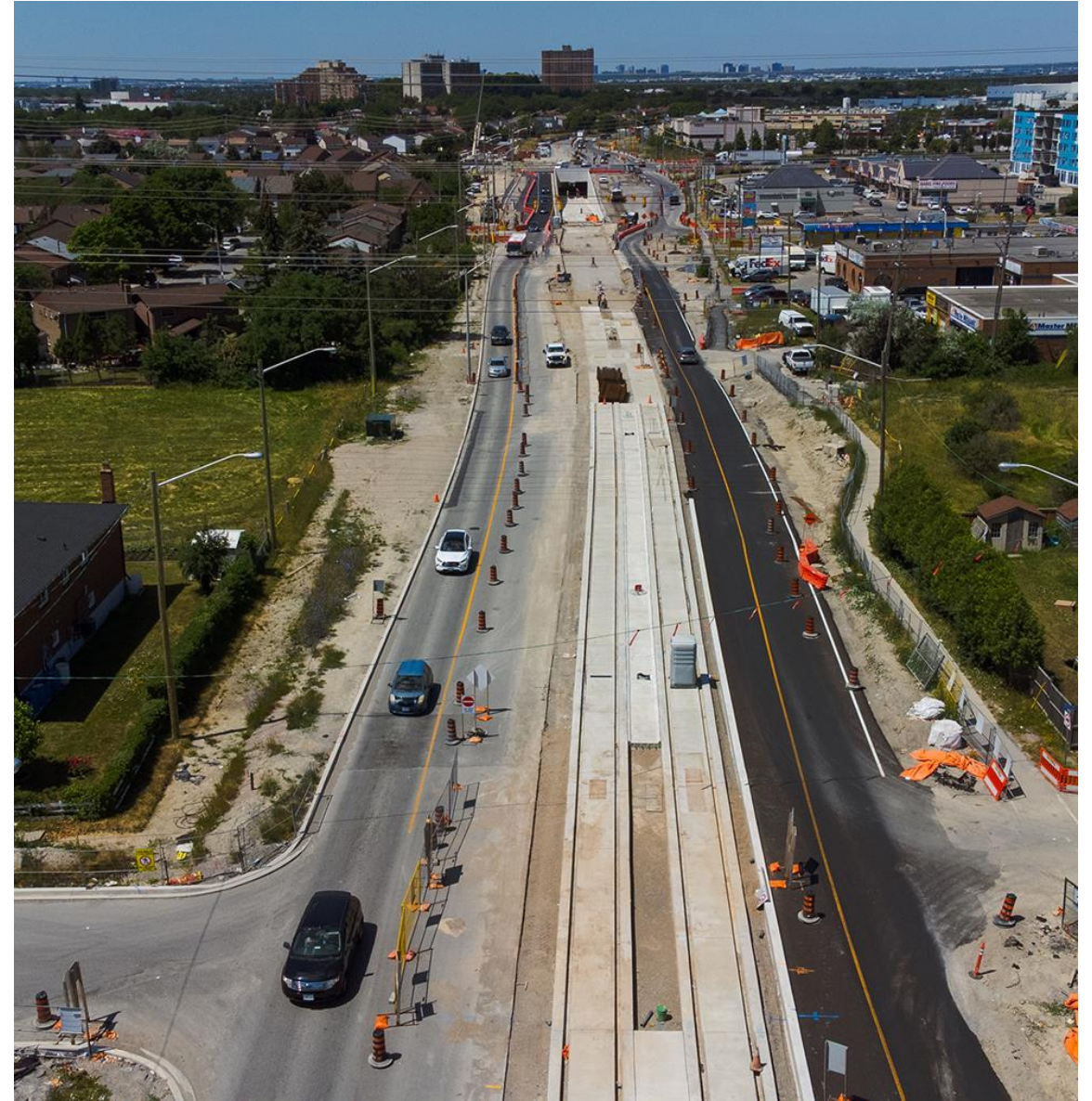


Photo: Aerial view, between Silverstone and Westmore Drives, looking west

CURRENT AND UPCOMING WORKS

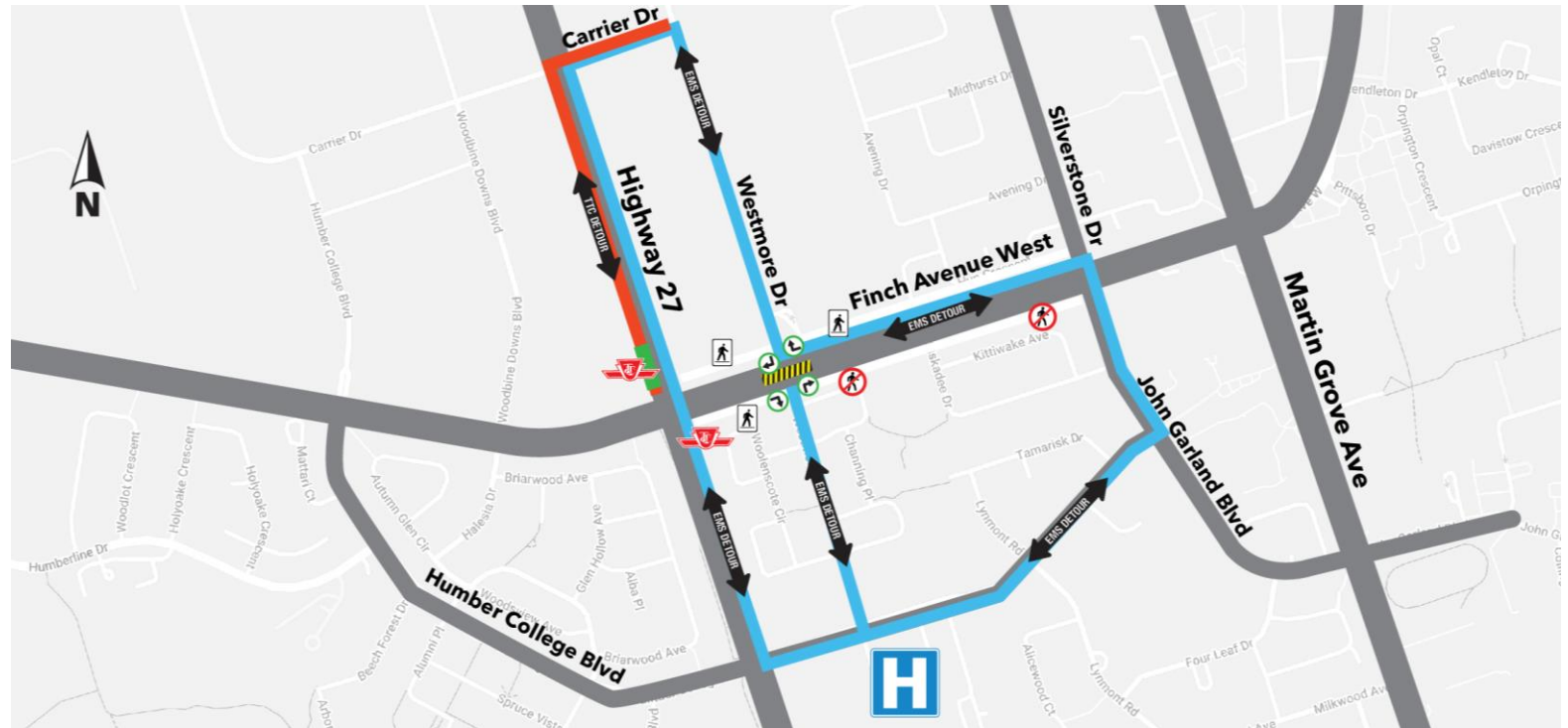
- Overhead and underground electrical work from Highway 27 to Damascus Drive starts in April 2022 for six months, approximately.
- Wet utilities installation is ongoing. Full road closures on Silverstone Road and John Garland Boulevard will occur at the beginning of August 2022.
- West of Silverstone, excavation and track slab work is ongoing for guideway installation.
- After the work is done, rail installation from Silverstone Drive to Highway 27 will occur.
- Community members will be notified of any significant construction related impacts, separately.



Map: Aerial view of Finch Avenue West and Westmore Drive looking west.

TRAFFIC STAGING FOR GUIDEWAY WORKS ON FINCH AVENUE WEST AND WESTMORE ROAD.

- Guideway crossing installation on Finch Avenue West and Westmore Road
- The work started in June 2022 and is scheduled to be finished late Summer 2022, approximately
- The intersection acts as Right in-Right out.
- North/south bound and east/west bound will be partially restricted for two months, approximately.
- Minor field modifications will occur when needed to complete work safely and minimize impact on the public.



Map: Detour map for guideway works at Finch Avenue West and Westmore Road.

Humber College Stop and Highway 27

COMPLETED AND UPCOMING WORKS

Finch Avenue West and Highway 27

- Concrete pours and steel structural works for the station building is ongoing.
- Community members will be notified of any significant construction related impacts, separately.

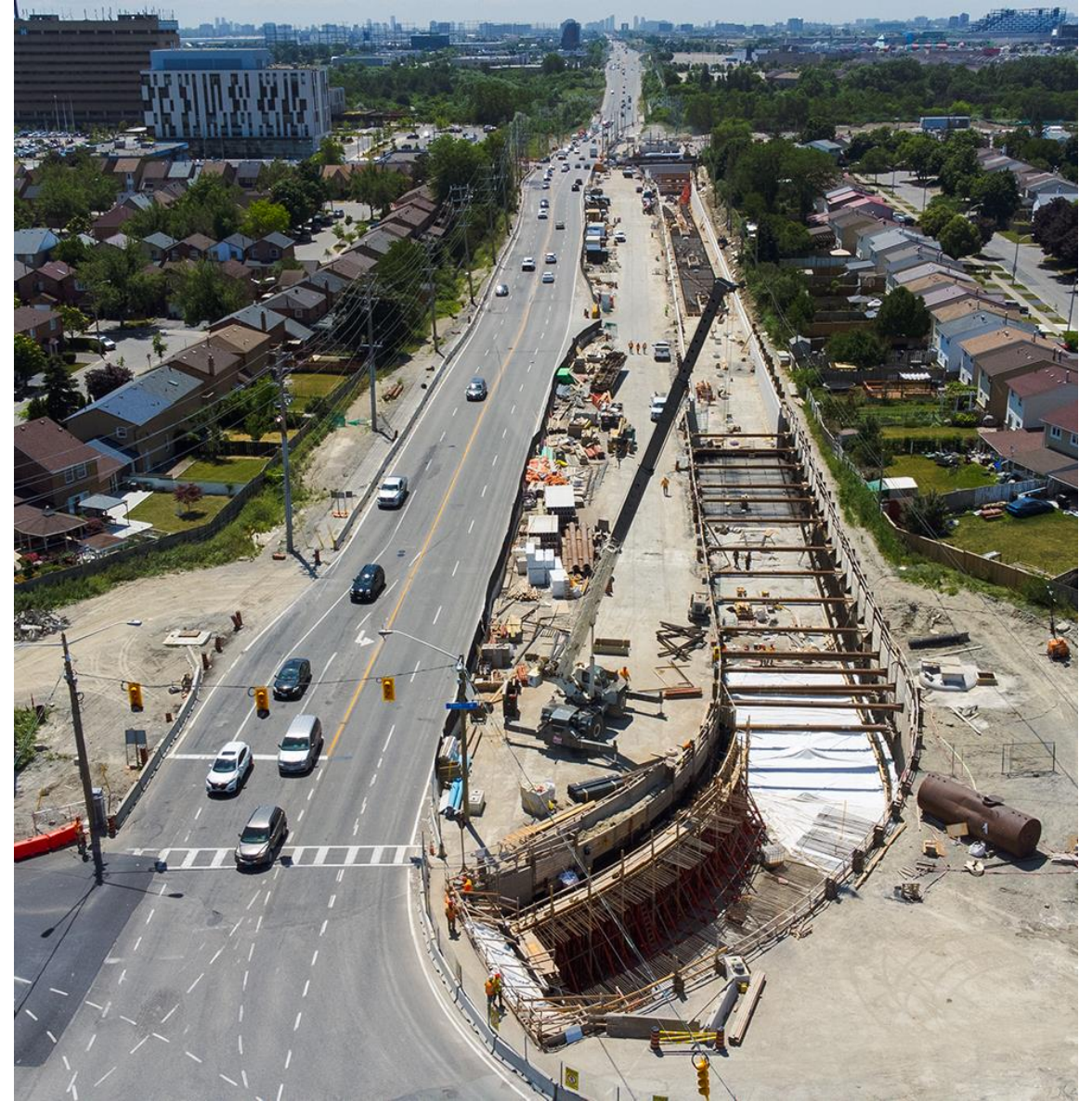


Photo: Aerial view of Highway 27 and Finch Avenue West, looking

south.

CURRENT WORKS

Future Humber College Stop and Portal

- The entire area is handed over to track team for track slab and rail installation. Track work continues.
- Community members will be notified of any significant construction related impacts, separately.



Photo: Intersection of Highway 27 and Humber College Blvd looking west

Communications and Community Engagement

COMMUNICATION AND COMMUNITY ENGAGEMENT

Updates

- Multipronged Finch West LRT advertising campaign implemented
- MX Q2 2022 Newsletter distributed to 25,000 ppl
- Q2 2022 FWLRT Project overview article
- Station safety article submitted to MX
- Environmental article re: FWLRT submitted to MX
- Attended DUKE Heights BIA Canada Day event at Fountainhead Park (w/Mosaic booth set up)
- Attended DUKE Heights BIA Children's Bike Initiative
- Conducted -York University- IEP Program- Webinar- CB Information and Networking

Upcoming

- Story on at-grade stops (Tobermory, Driftwood, Jane)
- Intern interview article
- More unique machines story and pictures
- Monthly alignment video flyover
- Support Best Grow To- Local grown food festival-Toronto Urban Growers
- Structure fly-through video for both stations (late summer and fall TBD)
- Union Outreach in the Community to support Apprenticeship Plan
- Internship Program Graduation
- Pre-apprentices (NexGen) Retreat with TCBN




KEEPING YOU INFORMED

Communication Methods

- Construction Liaison Committee (CLC)
- Emails to Mailing List
- Weekly E-Newsletter
- Construction Notices
- Project Website Updates
- Frequently Asked Questions (FAQ)
- Metrolinx News Blog
- Wayfinding and Signage
- Social media - Geo-targeting
- Metrolinx Q1 2022 Newsletter
- Community Project Update brochure
- Billboards
- Community brochures/postcards

Engagement Tools

- Virtual Open House via Metrolinx Engage
- Working or Advisory Group Meetings
- Business Liaison
- Public Meetings



Stay Informed: [metrolinx.com/finchwestlrt](https://www.metrolinx.com/finchwestlrt) and sign up to our Toronto West e-newsletter

Questions or comments: TorontoWest@metrolinx.com, @FinchWestLRT, 416-202-6500

NEXT CLC MEETING

Next meeting will be on September 13, 2022, via Microsoft Teams.



Thank you and Stay Safe

