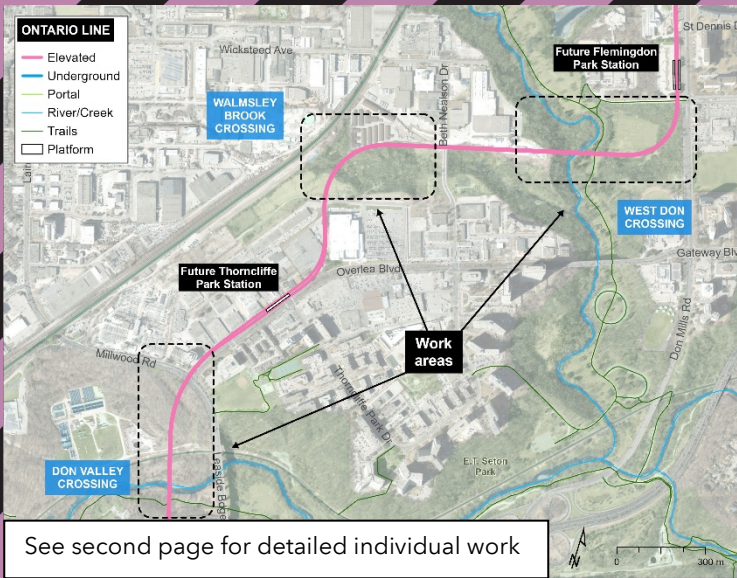


# Geotechnical Investigative Work in the Don Valley

Starting as early as November 21, 2022



## What is happening?

Work is underway to deliver the new Ontario Line from the Science Centre to Exhibition Station, to connect more people to more places.

Crews will be conducting geotechnical investigations in the areas of the planned Don Valley crossing, Walmsley Brook crossing, and the West Don crossing. This work is needed to investigate subsurface conditions to provide information for the Ontario Line design.



## Timing

- **Scheduled start:**  
November 21, 2022
- **Scheduled completion:**  
March 31, 2023
- **Days:**  
Seven days a week
- **Hours:**  
7 a.m. – 6 p.m.  
**On occasion work will take place between the hours of:**  
7 p.m. – 6 a.m.



## What to expect

- Work crews will be conducting geotechnical investigations to study ground conditions, which will inform design and construction plans for a new elevated structure that will carry subway trains across the valley and throughout the northern part of the line.
- All official city trails will remain open. Appropriate traffic and safety control measures will be implemented for work adjacent to the Lower Don trail and Crothers Woods trail and for vehicular access via the trails.
- Flagging, signage, and secured fencing will be in place to help direct trail users safely.
- On occasion, overnight work will take place to avoid impacts on trail users and to coordinate with other projects in the area.
- Any equipment left on site overnight will be secured with fencing and signage.
- Security personnel may be present on-site in some areas.
- Park users may hear some noise near the site like a vehicle on high idle with occasional hammering.
- Crew will begin to mobilize work as early as November 17 to prepare for the investigative work.
- Work may be rescheduled or delayed due to unforeseen circumstances.

## The Ontario Line



15.6 kilometres of transit service



Making it faster and easier for hundreds of thousands of people to get where they need to be



Over 40 new connections to GO train lines and existing subway, streetcar, and bus lines.



To stay updated, sign up for our e-newsletter at [Metrolinx.com/OntarioLine](https://metrolinx.com/OntarioLine)

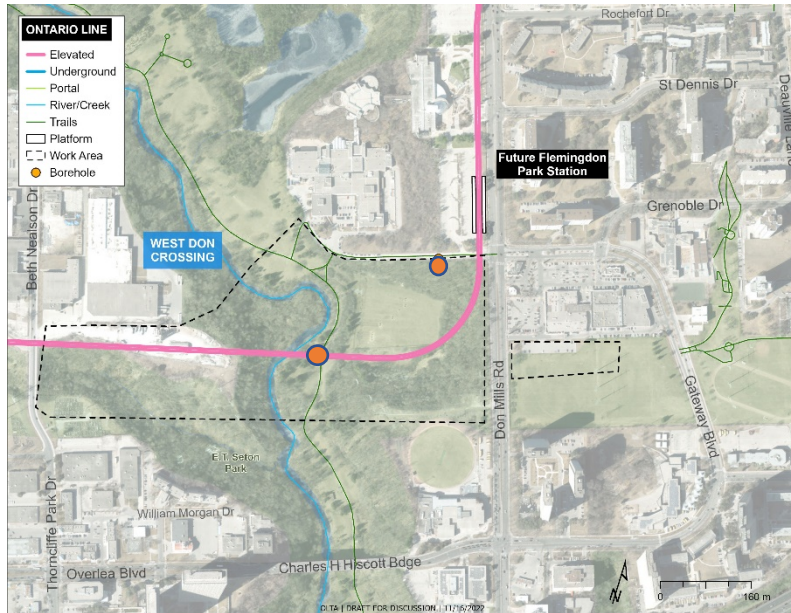
Write to us at: [OntarioLine@Metrolinx.com](mailto:OntarioLine@Metrolinx.com)  
Call us at: 416-202-5100  
Visit the website: [Metrolinx.com/OntarioLine](https://metrolinx.com/OntarioLine)  
Information as of: November 16<sup>th</sup>, 2022

**METROLINX**

Disponible en français sur demande. Si vous êtes intéressé, veuillez envoyer un courriel à [OntarioLine@Metrolinx.com](mailto:OntarioLine@Metrolinx.com).

## Work Zones

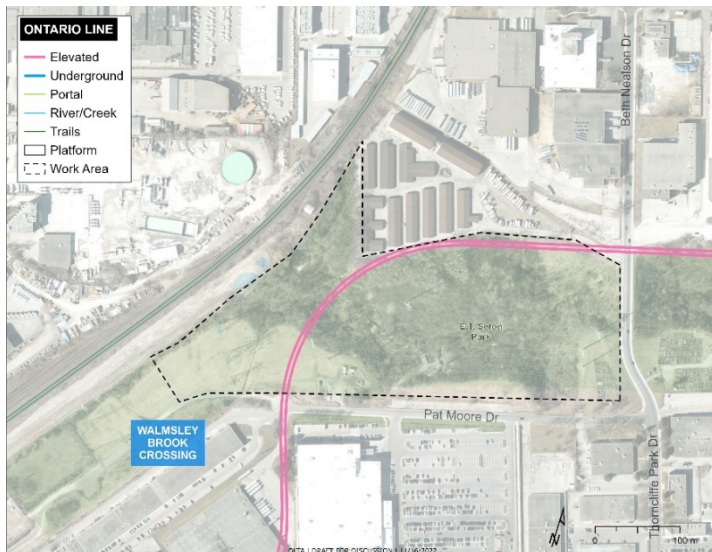
### West Don Crossing



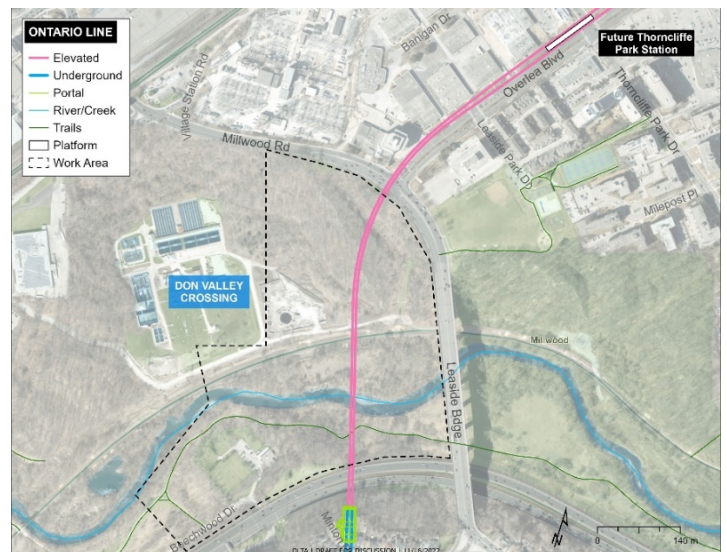
Work will begin at E.T. Seton Park (West Don Crossing site) on two boreholes.

Please note this schedule is tentative and subject to change due to staff availability and weather conditions.

### Walmsley Brook Crossing



### Don Valley Crossing



## The Ontario Line



15.6 kilometres of transit service



Making it faster and easier for hundreds of thousands of people to get where they need to be



Over 40 new connections to GO train lines and existing subway, streetcar, and bus lines.



To stay updated, sign up for our e-newsletter at [Metrolinx.com/OntarioLine](https://www.metrolinx.com/OntarioLine)

Write to us at: [OntarioLine@Metrolinx.com](mailto:OntarioLine@Metrolinx.com)

Call us at: 416-202-5100

Visit the website: [Metrolinx.com/OntarioLine](https://www.metrolinx.com/OntarioLine)

Information as of: November 16<sup>th</sup>, 2022



Disponible en français sur demande. Si vous êtes intéressé, veuillez envoyer un courriel à [OntarioLine@Metrolinx.com](mailto:OntarioLine@Metrolinx.com).