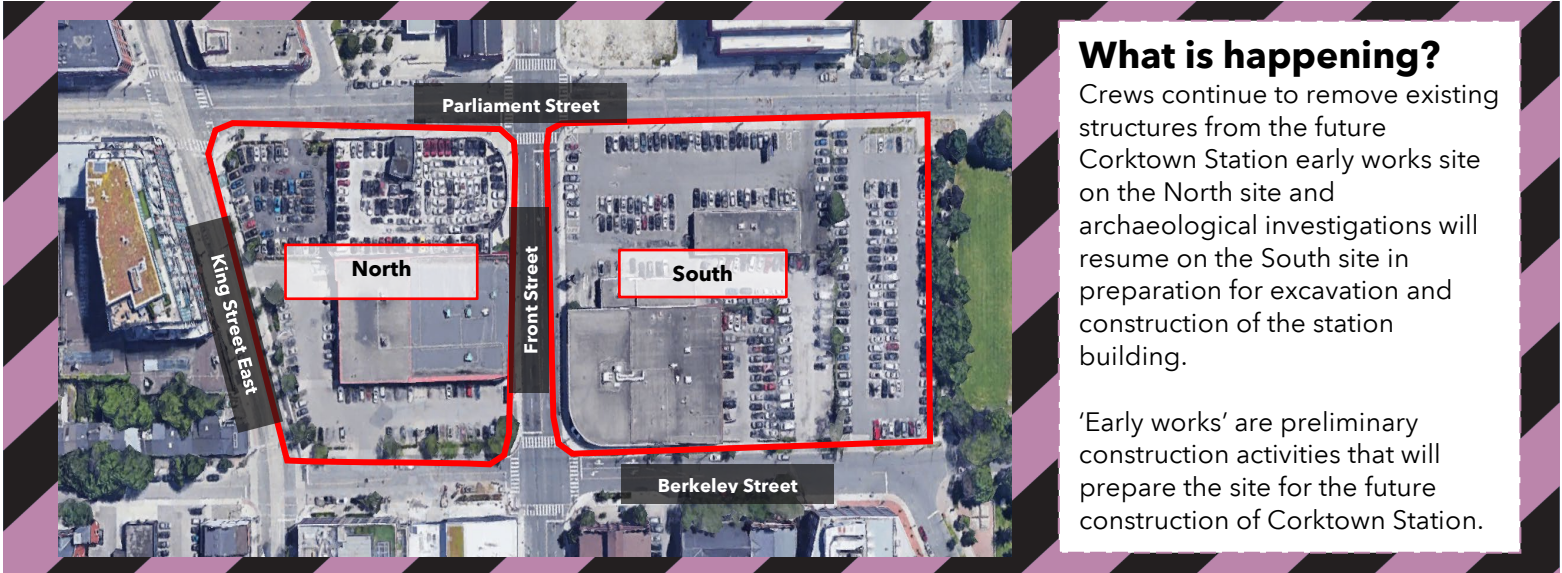


Update: Demolition and archaeological investigations at the Corktown early works site

Update as of April 26, 2022



What is happening?

Crews continue to remove existing structures from the future Corktown Station early works site on the North site and archaeological investigations will resume on the South site in preparation for excavation and construction of the station building.

'Early works' are preliminary construction activities that will prepare the site for the future construction of Corktown Station.

Timing


- **Update as of:** April 26, 2022
- **Duration:**
 - Demolition: 10 weeks
 - Archaeological work: Until end of 2022
- **Days:** Weekdays and Saturdays
- **Hours:** 7 a.m.- 6p.m.

What to expect

- Demolition of buildings located on the south site has now been completed.
- Building demolition of structures located at the **north site** will begin with the removal of the Staples building at 250 Front Street (map above depicts north and south sites).
 - Demolition work for the north site (Staples and Porsche dealership) is expected to take approximately ten weeks.
- Archaeological investigations will resume on the **south site** as early as April 27.
 - Scheduled Stage 4 excavations and Stage 2 trenching will take place in predetermined locations at both the north and south sites. This work is expected to take the remainder of 2022 to complete.
- Indigenous Monitors will be on site to monitor the archaeological work being undertaken.

The Ontario Line

 15.6 kilometres of transit service

 Making it faster and easier for hundreds of thousands of people to get where they need to be



Over 40 new connections to GO train lines and existing subway, streetcar, and bus lines.



To stay updated, sign up for our e-newsletter at [Metrolinx.com/OntarioLine](https://www.metrolinx.com/OntarioLine)

Write to us at: OntarioLine@Metrolinx.com
 Call us at: 416-202-5100
 Visit the website: [Metrolinx.com/OntarioLine](https://www.metrolinx.com/OntarioLine)
Information as of: April 26, 2022



Disponible en français sur demande. Si vous êtes intéressé, veuillez envoyer un courriel à OntarioLine@Metrolinx.com.

- The demolition and archaeological work areas will be inaccessible and protected by construction enclosures to ensure the safety of the public.
- Residents and businesses near the work site can expect to hear noise caused by trucks, other construction equipment and demolition work.
- Noise monitoring stations are both inside and outside of the site and are continuing to track the noise levels.
- Minimum impact on pedestrians, traffic or road access is expected.
- Work may be delayed or rescheduled due to weather conditions or unforeseen circumstances.
- Additional early works construction details and timing will be shared as plans proceed.

The Ontario Line



15.6 kilometres of transit service



Making it faster and easier for hundreds of thousands of people to get where they need to be



Over 40 new connections to GO train lines and existing subway, streetcar, and bus lines.



To stay updated, sign up for our e-newsletter at [Metrolinx.com/OntarioLine](https://www.metrolinx.com/OntarioLine)

Write to us at: OntarioLine@Metrolinx.com
Call us at: 416-202-5100
Visit the website: [Metrolinx.com/OntarioLine](https://www.metrolinx.com/OntarioLine)
Information as of: April 26, 2022



Disponible en français sur demande. Si vous êtes intéressé, veuillez envoyer un courriel à OntarioLine@Metrolinx.com.