

GO Expansion

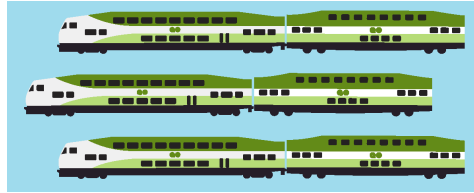
Metrolinx Community Update: Barrie Double-Track Enabling Project

Virtual Engagement

November 16 – 30, 2022

City of Toronto

THE RIGHT INVESTMENT AT THE RIGHT TIME; GO RAIL EXPANSION WILL ENABLE:



MORE TRIPS

3x more trips from 3500 weekly trips in 2019



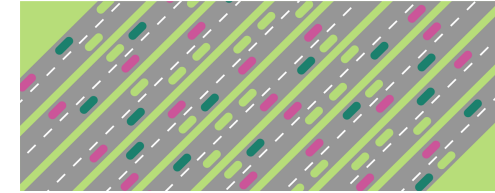
FASTER TRAVEL

Electric trains **accelerate and decelerate faster**. Introduction of **additional express** services



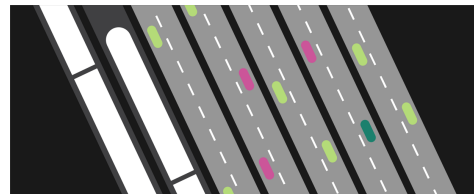
HIGH FREQUENCY

No need to check a schedule with service averaging every 15 minutes



MORE CAPACITY

Doubling regional commuter capacity equivalent to **nine highways the size of the 401**



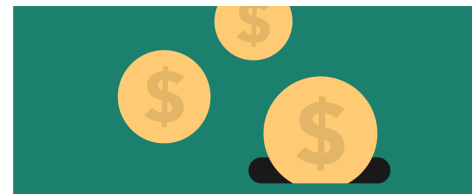
REDUCED CONGESTION

More trains = reduced congestion across the **region**, taking close to **145,000 car trips per day, off the road**



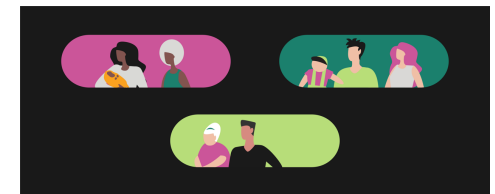
CREATE JOBS

An estimated **8,300 annual jobs** created for the first 12 years of delivery will be created over the lifecycle of the program



SAVE TAXPAYERS MONEY

All operating costs covered with fare box revenue. **GO Rail revenues will exceed 110%** of operating costs over the next 60 years



INCREASED RIDERSHIP

More options and faster trains will increase peak and off-peak service. **By 2055, annual ridership will exceed 200 million**

The GO Expansion program will provide a range of improvements across the GTHA:

**More
all-day
service**



**Service
in both
directions**



**Trains every 15
minutes
or better**



**Faster
and more
efficient fleet**



**More accessible
stations**



**An expanded
Union Station**



Over 10,000
weekly trips from
3500 weekly trips
in 2019

New trains will reach
speeds of 140km/h
between stations, making
the GO Train faster than
taking a car in virtually
every instance.

Improvements to
stations access and
boarding and
alighting

Capacity for train
and passenger
movements for the
rest of the century

BENEFITS

Current

01



Every 30-60 minutes
limited weekend service



02



Most lines
peak direction only



03



Most lines
rush hour only



04



Diesel service



05



A commuter system



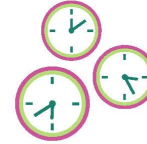
06



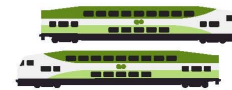
3500 trips/week in 2019



GO Expansion



Trains every 15 minutes or
better



Two way



All day, everyday



Faster, electrified
service



A regional backbone
connecting communities



Over 10000 trips/week

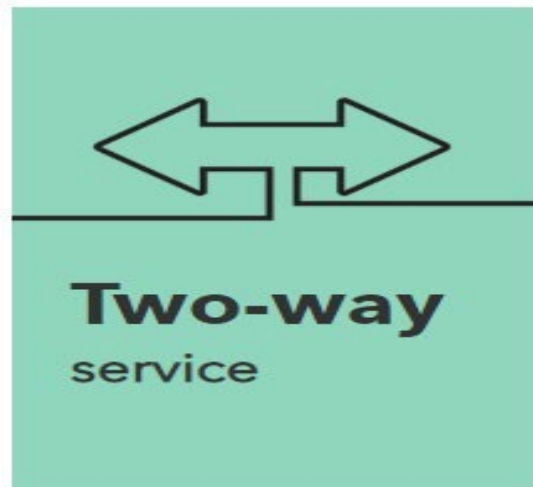
WHAT ARE WE DOING

Metrolinx GO Expansion Program

Metrolinx is working to transform the way the region moves by building a seamless, convenient and integrated transit network across the Greater Golden Horseshoe. Over the next 10 years, Metrolinx is transforming the existing GO rail system to deliver a whole new rapid transit experience to your community. With more frequent train service you will have more options to get where you need to go.

Barrie GO Line Expansion

The Barrie GO Line Expansion will bring all-day, two-way GO service for people across Toronto, York Region and Simcoe County.



THE PROCESS

GO EXPANSION PROGRAM

Started: 2014

Improved rail service in both directions, on five of the seven GO rail corridors, including Barrie Corridor



BARRIE RAIL CORRIDOR EXPANSION TRANSIT PROJECT ASSESSMENT PROCESS

Started: 2015, Completed: 2017

The Study identified specific and appropriate rail corridor infrastructure improvements needed to support an increased level of GO train service, including:

- Double Track
- GO Station Upgrades
- Existing Structure Upgrades
- New Train Layover Facility

Three (3) Public Meetings were held to incorporate public feedback



BARRIE DOUBLE TRACK ENABLING WORKS

Started: 2019

Completion:

Planned for 2025



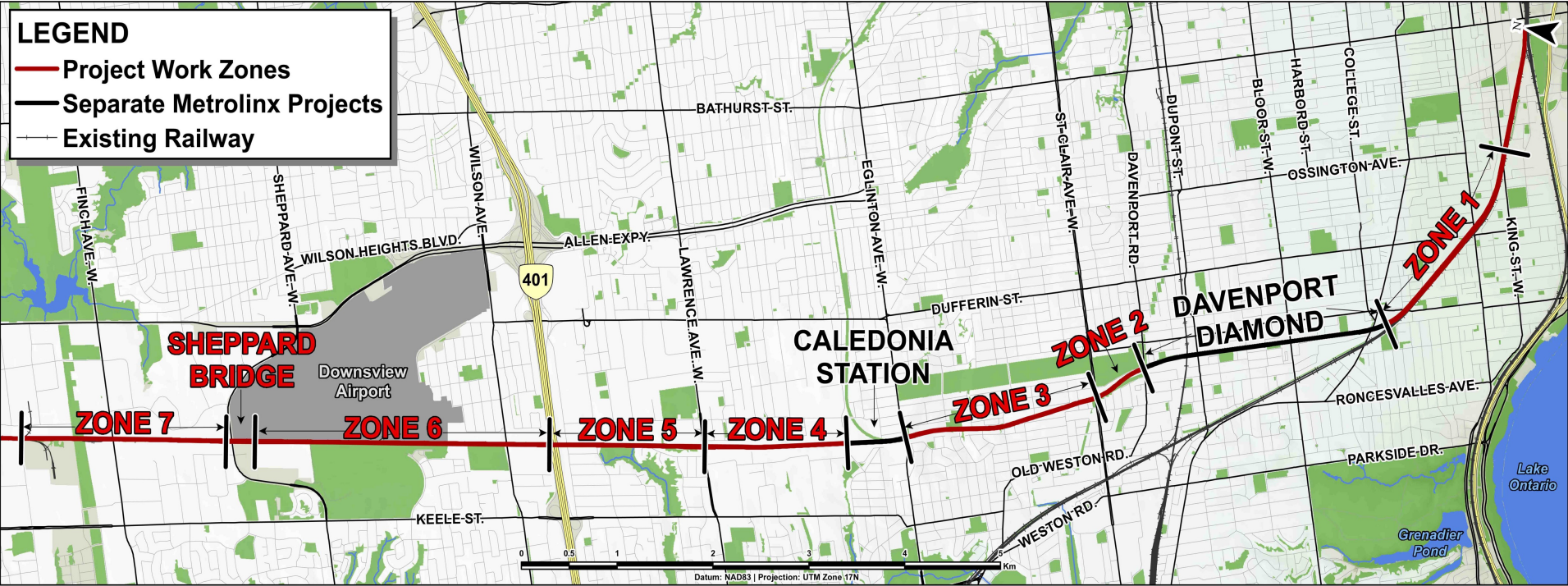
BARRIE DOUBLE TRACK CONSTRUCTION

Construction works planned for the future

THE PROJECT

Barrie Double Track-Enabling Works (the Project)

The Project includes modifications and upgrades to the existing rail corridor, that will allow for a second set of tracks to be installed in the future. The Project Area is within the City of Toronto, and is organized into seven zones. Different zones will be constructed at different times, between 2020 and 2025.



CONSTRUCTION SCHEDULE

Project: 2020 – 2024

- Zone 1: 2020 - 2021

- **Zone 2: 2023 – 2024**

- Zone 3: 2021 - 2023

- Zone 4: 2021 - 2022

- Zone 5: 2020 - 2022

- Zone 6: 2021 - 2022

- **Zone 7: 2022 – 2025**

Davenport to St. Clair – Tentative Construction Schedule and Activities:

Summer 2023 to Summer 2024:

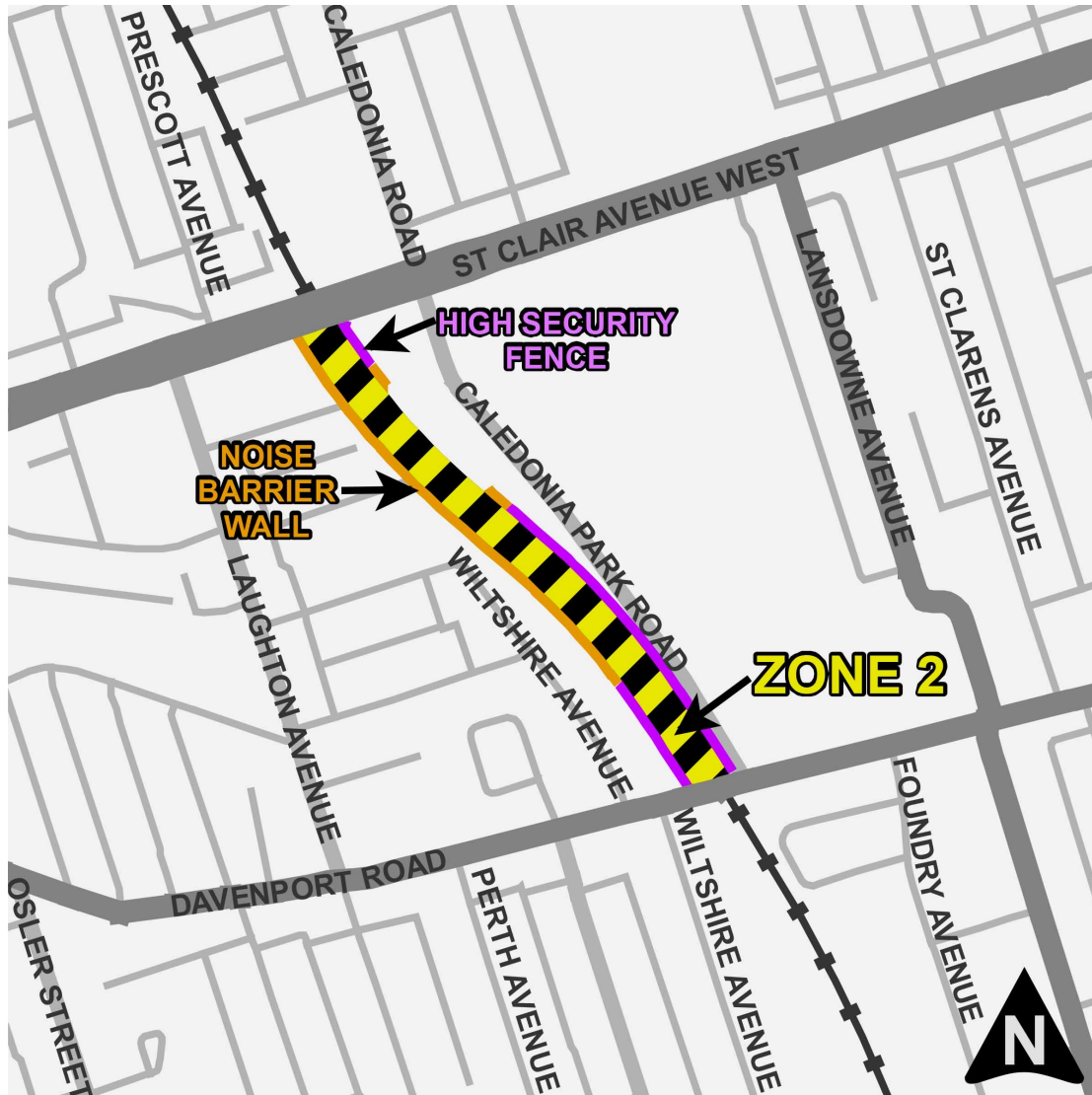
- Grading Works
- Noise Barrier Walls
- High Security Fence

Sheppard to York University – Tentative Construction Schedule and Activities:

Fall 2022 to Spring 2025:

- Grading Works
- High Security Fence & Chain Link Fence

THE PROJECT



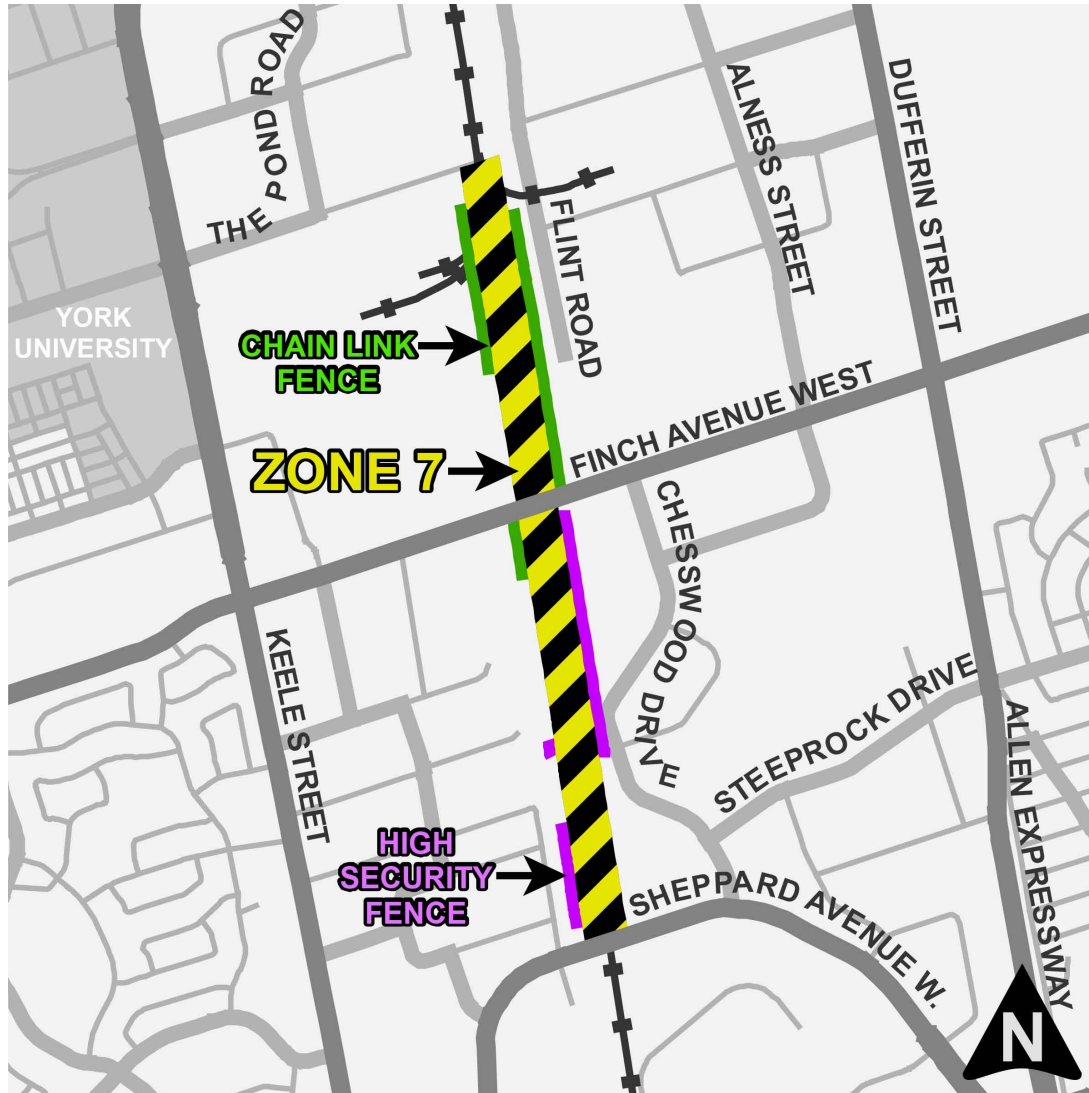
Davenport to St. Clair Work Includes:

- Clearing and Grubbing
- Grading and Drainage
- Noise Barrier Wall with Anti-Graffiti Coating
- High Security Fence
- Utility Relocation and Protection



Noise Wall Pattern in Zone 2

THE PROJECT



Sheppard to York University Work Includes:

- Clearing and Grubbing
- Grading and Drainage
- High Security Fence and Chain Link Fence Installation
- Storm Sewer and Culvert Installation
- Utility Relocation and Protection



CONSTRUCTION

How will the noise wall barrier be built?



1. Post Installation



2. Panel Placement



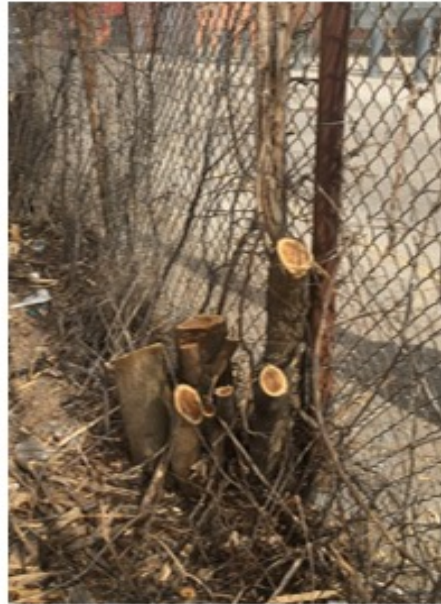
3 & 4. Noise Barrier Wall Construction



CONSTRUCTION

What activities will happen during construction?

- Removal of existing vegetation (clearing and grubbing)
 - Some private trees will require trimming or removals. Removed trees will be compensated according to City of Toronto's by-law.
 - Residents will be advised of any removals a minimum of 2 weeks in advance.
 - Metrolinx will contact directly any affected property owners where private tree removals are required.
- Grading the ground and preparing to install retaining walls and other infrastructure.
- Installation of noise barrier wall posts and panels.



CONSTRUCTION

What activities will happen during construction?

- Delivery and placement of gravel material in the rail corridor
- Relocation of utilities and upgrades to drainage infrastructure, including culvert and sewer works
- Installation of security fences
- Stabilization and restoration of the disturbed soils



CONSTRUCTION

What to expect during construction?

- **Noise and Vibration:** Expect perceivable noise and vibration that is typical of construction activities. Noise levels managed to be within regulatory requirements. Vibration levels assessed to be below what could damage property. Mitigation measures include, but not limited, to minimizing drop heights, idle reduction, and use of temporary sound barriers.
- **Dust:** Mitigation measures will be applied for dust suppression include, but not limited to, limits on stockpile heights and the use of vacuum sweeper and water trucks.
- **Erosion and Sediment:** Controls in place to prevent erosion and sedimentation, such as silt fences and erosion control blankets.
- **Monitoring:** Regular environmental inspections, which include monitoring the items above.
- **Property Access:** Metrolinx will notify property owners if any property access is required.



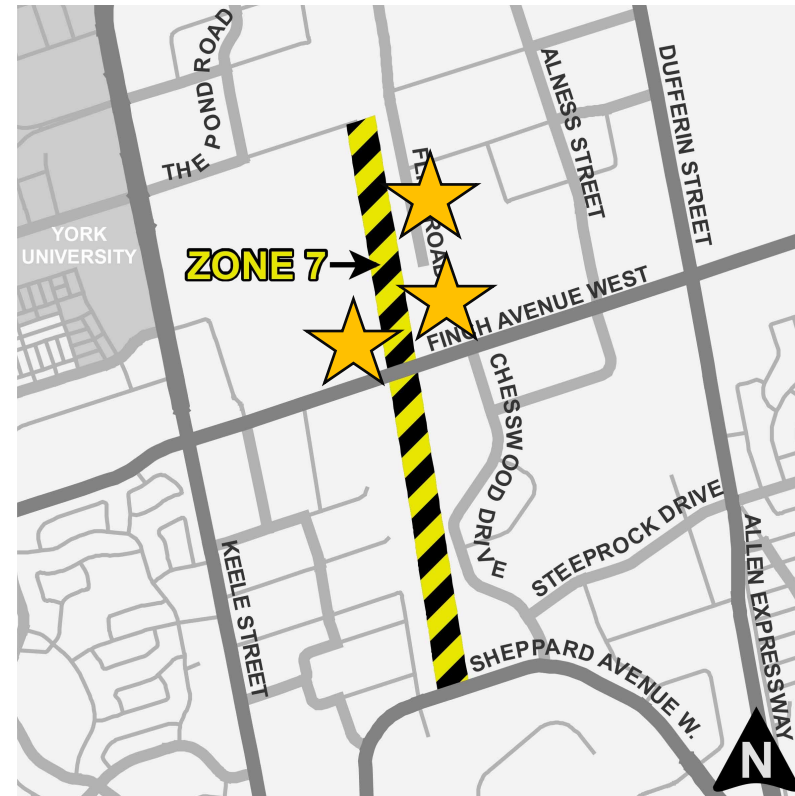
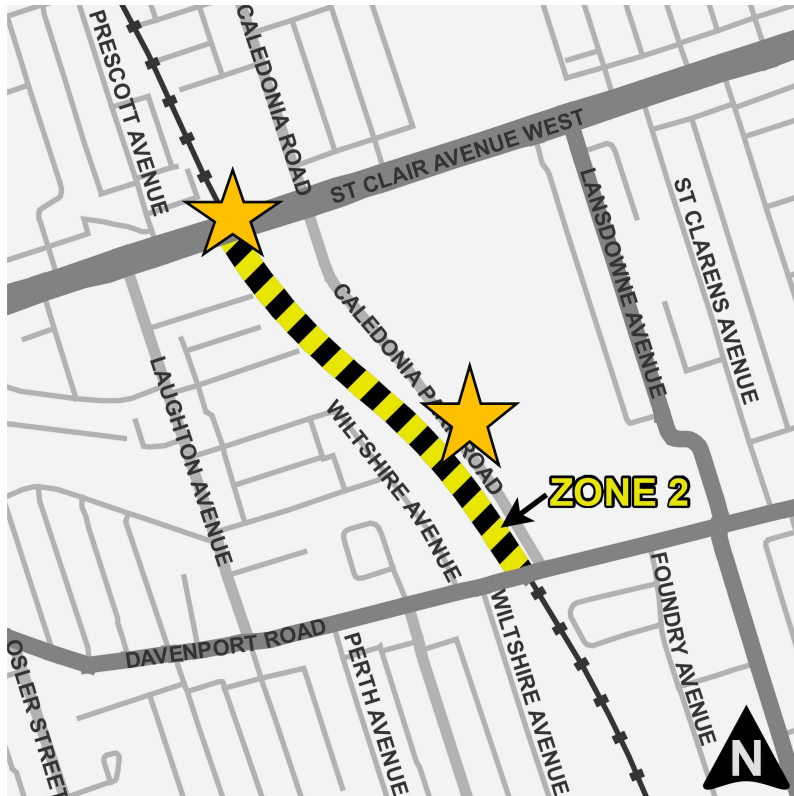
CONSTRUCTION

What to expect during construction?

Traffic Circulation:

- All work will be done within the rail corridor, with designated access points for construction staff
- There should be minimal impacts to traffic

Access
Points



COMMUNICATIONS

Construction Notice

- We do our best to provide our neighbours with advance notice of construction notice
- We will contact you in advance if we anticipate any impacts to transit users, pedestrians, traffic, residents, or the public, related to:
 - Lane closures
 - Removals on private property (trees, fences, sheds, etc.)
 - Night work
 - Track closures

Contact Information

- Questions or comments? Contact torontowest@metrolinx.com
- (416) 202-6911
- Contact information will also be posted at the construction site



Email Distribution Updates

- We have an email distribution list, where we provide updates on project and construction activities. We encourage you to sign up!

