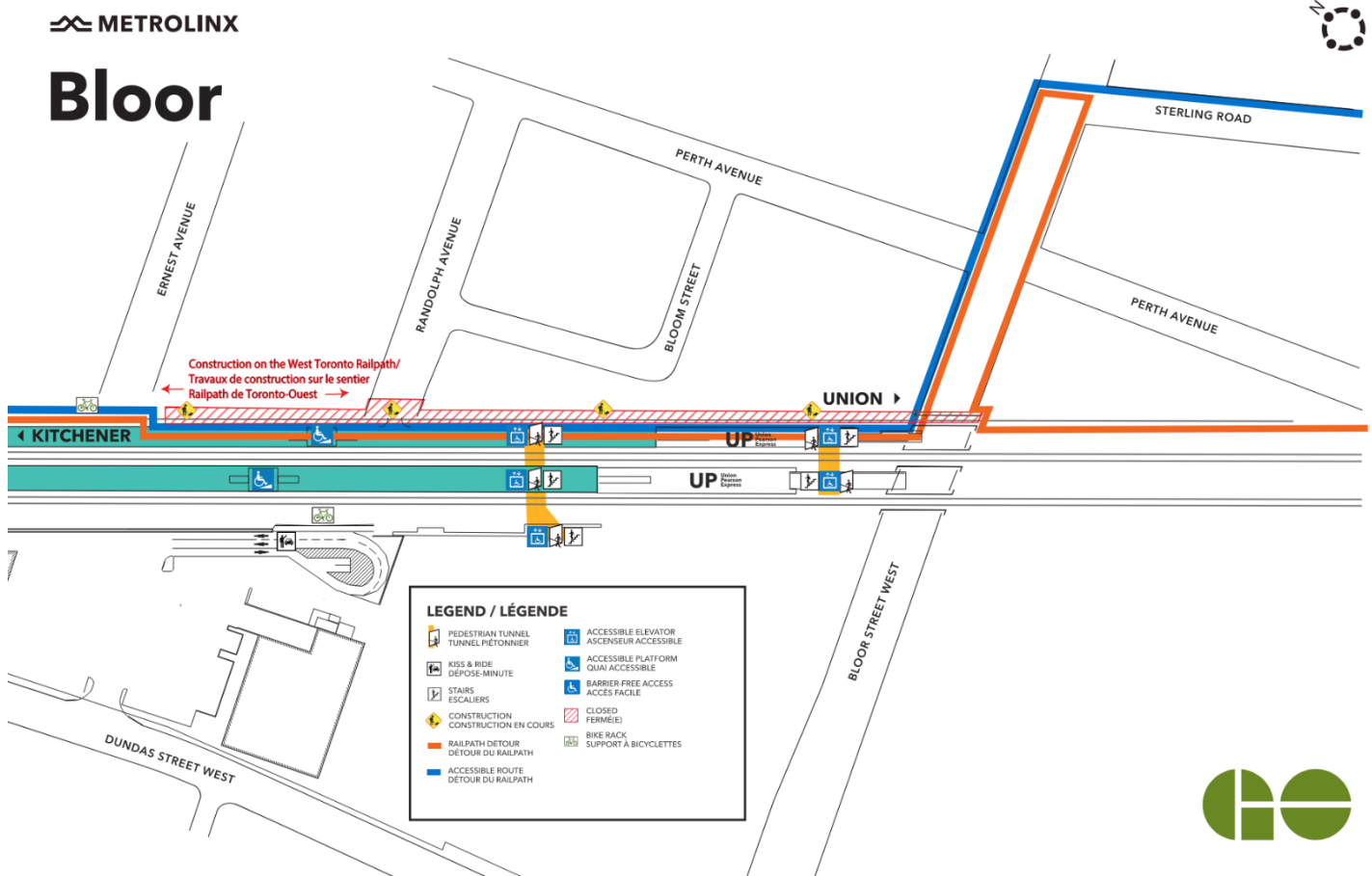


West Toronto Railpath Path Closure/Detour

Jan 2023



Project Overview

GO service is expanding to serve you better - with more frequent service, more stations, cleaner technology, and more connections. Across the entire network, our goal is to deliver over 10,000 train trips a week - so you won't need a schedule because you know the next train will be coming

soon. GO Expansion will transform the GO rail network from a commuter service into an all-day, rapid system.

Metrolinx will be building a new track on the Kitchener GO line, next to the West Toronto Railpath. Part of this work will include construction of a new entrance to Bloor GO Station, a new community park at Ernest Avenue, and a realignment of the Railpath, on behalf of the City of Toronto.

What You Need to Know

Construction of the new Bloor GO Station tunnel and pavilion at Randolph Avenue has begun. To allow for excavation of the new trackbed and noise wall installation next to the station, the Railpath closure will be extended from Ernest Avenue to South of Bloor Street.

WHAT TO EXPECT

- The Railpath closure will extend from Ernest Avenue to the Bloor Street pedestrian bridge starting Jan 23, 2023 for approximately one year
- Barrier-free access to the GO Station and Railpath will be available at the Union-Pearson (UP) Express entrance on the North side of Bloor Street.
- A temporary ramp will be installed at Ernest Avenue to access the platform, and directional signage will be installed to guide you through the detour route

DETOUR DIRECTIONS

Travelling south on the Railpath towards Bloor Street

1. Use the ramp or stairs at Ernest Avenue to access the Bloor GO Station platform
2. Head towards the UP Express staircase and elevator located at the south end of the station. Look for the black columns and wood ceiling
3. Take the staircase or elevator to the lower level and exit the station doors onto Bloor Street.
4. Turn left towards Symington Avenue. At Symington, turn right and cross to the south side of Bloor Street
5. Head west on Bloor Street towards the pedestrian bridge and use the staircase on the south side of the bridge to re-access the Railpath

HOURS OF WORK

- The majority of work will take place between 7:00 a.m. and 7:00 p.m. on weekdays.
- These dates are tentative and may be subject to change due to weather or unforeseen circumstances
- Work will be conducted as quickly and efficiently as possible to minimize disturbances, but residents and businesses near the rail corridor can expect to hear noise caused by trucks, excavators, and drilling machinery.

Travelling north on the Railpath towards Bloor Street

- For barrier-free access, do not enter the Railpath at the Dundas Street entrance, instead, head north on Sterling Road until reaching Bloor Street. Then follow steps 2-5 below.
1. Head north towards the Bloor Street pedestrian bridge. Take the stairs beside the bridge down to Bloor Street
 2. Turn right towards Symington Avenue. At Symington, cross to the north side of Bloor Street and turn left towards the pedestrian bridge
 3. Use the first set of doors located under the bridge, on your right side, to access the Bloor GO/UP Express Station.

Metrolinx Toronto West Community Engagement Team
Contact Us:

✉ Write to us at: TorontoWest@Metrolinx.com

Tel: 416-202-6911

🐦 Find us on Twitter [@GOExpansion](https://twitter.com/GOExpansion)

🌐 Visit the website: www.metrolinx.com

- For barrier-free access, follow steps 1-4, then head west on Bloor Street and turn left onto Sterling Road. Continue on Sterling Road to access the south end of the Railpath at Dundas Street.
- 4. Take the elevator or staircase to access the platform level
- 5. Head to the north end of the platform and re-access the Railpath using the ramp or stairs at Ernest Avenue

Metrolinx Toronto West Community Engagement Team

Contact Us:

✉ Write to us at: TorontoWest@Metrolinx.com

Tel: 416-202-6911

🐦 Find us on Twitter [@GOExpansion](https://twitter.com/GOExpansion)

🌐 Visit the website: www.metrolinx.com