

Davenport Diamond Guideway Construction Liaison Committee Meeting #27

August 29, 2022

For more info: metrolinx.com/davenport
For further feedback: TorontoWest@metrolinx.com

AGENDA

- Welcome and Introductions
- Meeting Purpose, Expectations & Code of Conduct
- Safety Moment
- July CLC Minutes & Actions Items
- Construction Update
 - Project Overview
 - Construction Timeline
 - Construction Activity: Completed, In Progress & Four-Week Look-Ahead
- Committee Discussion
- How to Stay Informed
- Next Meeting

MEETING PURPOSE, EXPECTATIONS & CODE OF CONDUCT

PURPOSE

- The monthly Construction Liaison Committee (CLC) meetings are an opportunity for the community to receive a regular cadence of project updates, for Metrolinx to listen to your feedback and collectively come up with mitigation strategies in a respectful and constructive way.

EXPECTATIONS

- During the presentation, please put yourself on mute to help us share all the project information. Once we finish our updates, we will have a discussion and answer any relevant questions you may have about the information we shared.

CODE OF CONDUCT

- Keep requested agenda and discussion items within the scope of the CLC and participate in a respectful manner - do not interrupt when someone is speaking or dominate discussions and refrain from foul language and derogatory comments.

LAND ACKNOWLEDGEMENT

Let us take a moment to acknowledge we are on lands that have been, and continue to be, home to many Indigenous Peoples including the Anishnabeg, the Haudenosaunee and the Huron-Wendat peoples.

We are all Treaty people. Many of us have come here as settlers, as immigrants or involuntarily as part of the trans-Atlantic slave trade, in this generation, or generations past.

We acknowledge the historic and continued impacts of colonization and the need to work towards meaningful reconciliation with the original caretakers of this land.

We acknowledge that Metrolinx operates on territories and lands covered by many treaties that affirm and value the rights of Indigenous communities, Nations and Peoples.

We understand the importance of working towards reconciliation with the original caretakers of this land. At Metrolinx, we will conduct business in a manner that is built on a foundation of trust, respect and collaboration

SAFETY MOMENT

GRAHAM COMMUTER RAIL SOLUTIONS

July 25th CLC MINUTES & ACTION ITEMS

CONSTRUCTION UPDATE

PROJECT OVERVIEW & CONSTRUCTION TIMELINE

COMPLETED, IN PROGRESS & FOUR-WEEK LOOK-AHEAD

PROJECT OVERVIEW

The **Davenport Diamond Grade Separation** project will prepare and complete the construction of an elevated twin-track guideway between Bloor Street and Davenport Road, west of Lansdowne Avenue, eliminating at-grade crossings, including the busy CP Rail intersection near Dupont Street.

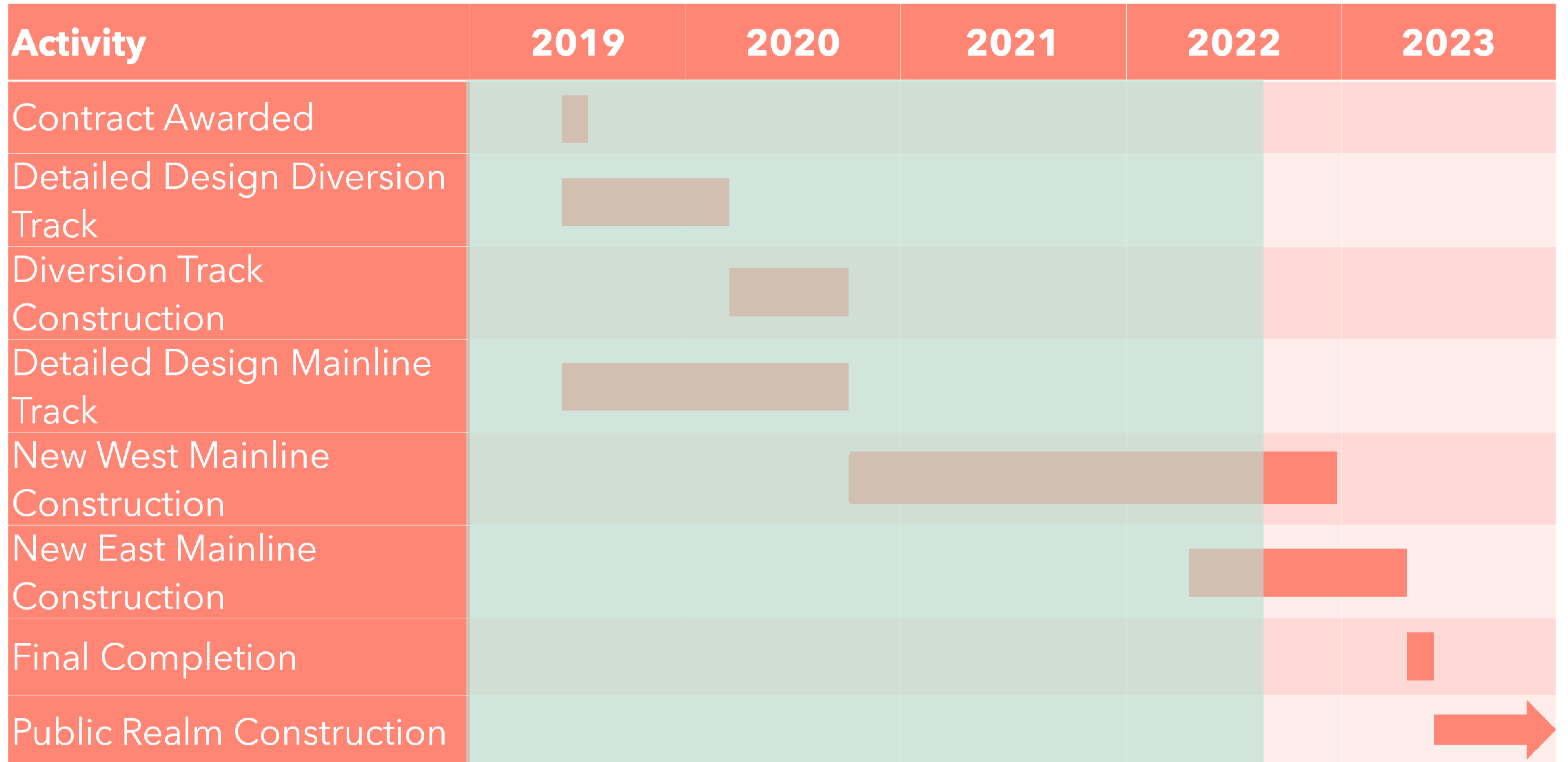
Davenport Diamond Guideway Project Map



INFOGRAPHIC LEGEND

-  **Davenport bridge rehabilitation**
-  **New bridge over CP Rail tracks**
-  **Dupont bridge rehabilitation**
-  **New bridge at Wallace Ave**
-  **New pedestrian tunnel at Paton Rd**
-  **Bloor St bridge replacement**

CONSTRUCTION TIMELINE



OVERNIGHT WORK

Why is there so much overnight construction activity on this project?

The Davenport Diamond Guideway project poses unique challenges:

- We are working in an active rail corridor with GO trains passing by during the daytime. Weekday trains run until 11:30 p.m.
- We have very limited space to work within.
- We have limited access points into the rail corridor.

Because we are working next to a live track, we follow strict standards and guidelines that dictate what we can and cannot do under a train load, i.e., when trains are passing.

When our work affects or has the potential to affect the integrity of the track, that work cannot be done while trains are running; that work must be carried out when trains are not running, which is overnight. **This is the main reason for overnight construction on this project.**

We work overnight to protect the track, train operators and passengers, our crews, the community, and nearby residents.

Upcoming night work:

- Ongoing: Moving rail material and welding
- Upcoming: Demobilizing of launcher at Dupont, Sept 6-Sept 18

CONSTRUCTION ACTIVITY: COMPLETE

North MSE (Mechanically Stabilized Earth) Wall - Construction

Construction on the north MSE wall between the CP Rail tracks and Davenport Road is complete.

MSE walls are massive soil structures that have been strengthened by placing reinforced straps in horizontal layers throughout the height of the wall that are connected to pre-cast concrete panels.

The panels fit together like puzzle pieces to keep everything in. The combination of panels and straps allows the wall to be built with a near vertical face because of the tension produced by the straps.



Ductbanks and Noise Walls at the North MSE

CONSTRUCTION ACTIVITY: COMPLETE

Paton Rd Pedestrian Underpass

Construction for the Paton Road Pedestrian Underpass is complete.

Standing forms for the concrete tunnel walls and roof slab began in early July with placement of reinforcement and pouring the concrete walls and roof slab occurring in August.

The missing section of the South MSE wall will be constructed on top to form a continuous retaining wall structure from Bloor Street to Wallace Ave.



Design rendering of Paton Rd Underpass



Paton Rd Underpass Concrete Footings

CONSTRUCTION ACTIVITY: IN PROGRESS

Electrical and Communications Rooms

Work is ongoing on the Electrical and Communications Rooms. The installation of duct banks and floor slabs within the structures is complete. Masonry walls and doorframes are also complete. Assembly of the roof and finishings are in progress.



Design rendering of Electrical and Communications Rooms and Egress Stairway.

CONSTRUCTION ACTIVITY: IN PROGRESS

640 Lansdowne Avenue - Contractor's Yard

As Elevated Guideway construction gets underway with girder installation, construction activity and truck traffic at our yard located at 640 Lansdowne Avenue, at the corner of Paton Road, has significantly increased.

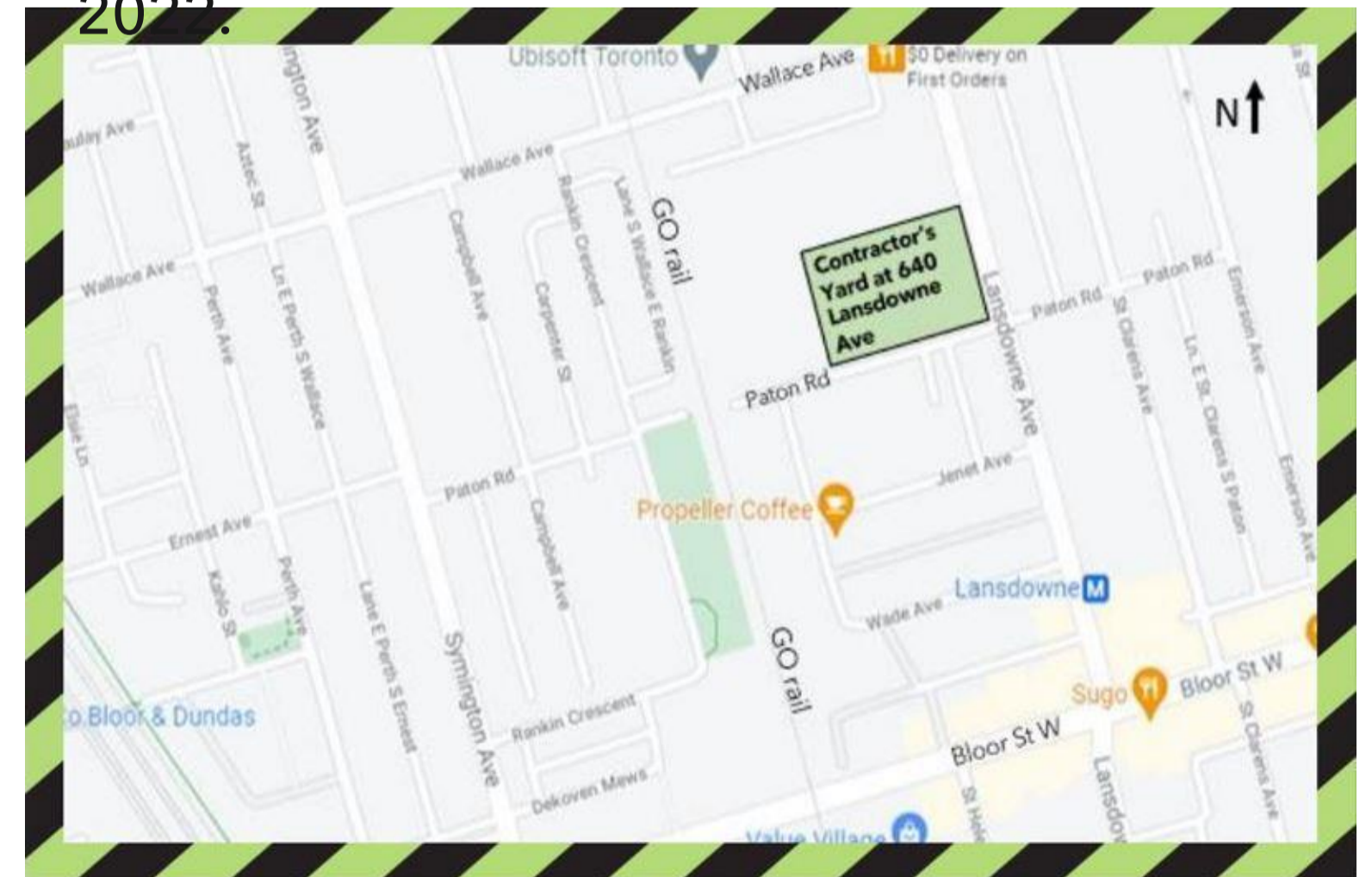
Truck traffic is increased due to frequent concrete girder deliveries into the yard via large tractor trailers and regular girder transportation from the yard into the rail corridor via self-propelled modular transporters (SPMTs).

Within the yard, crews will be post-tensioning the girders and a gantry crane will be used to offload the girders.



What to expect

- Daily from 7 a.m. to 7 p.m.
- Possible late night/overnight activity and traffic
- Residents in the immediate area can expect the following impacts:
 - Increased construction activity, truck traffic, and noise
 - Daily girder deliveries and transportation in and out of the yard
 - Parking restrictions on Paton Rd
- Anticipated completion date is September 2022.



CONSTRUCTION ACTIVITY: IN PROGRESS

Elevated Guideway - Girder Installation

The elevated guideway portion of the project is made up of precast concrete girders that will eventually support the track.

With the girders in place over the Dupont Bridge, girder installation is ongoing for the remaining sections of the elevated guideway. Girders are transported from the Lansdowne Yard into the corridor at Wallace Avenue and lifted with the gantry crane then “launched” to final position.

Start: May 2022

Estimated completion: September 2022



What to expect:

- Daily from 6 a.m. to 7 p.m.
- Possible late night/overnight activity and traffic
- Residents in the immediate area can expect the following impacts:
 - Increased construction activity, truck traffic, and noise
 - Daily girder transportation from Lansdowne yard to corridor at Wallace Ave
 - Daily parking restrictions on Wallace Ave

CONSTRUCTION ACTIVITY: IN PROGRESS

South MSE (Mechanically Stabilized Earth) Wall - Construction

Construction for the south MSE wall between Bloor Street West and Wallace Avenue is underway.

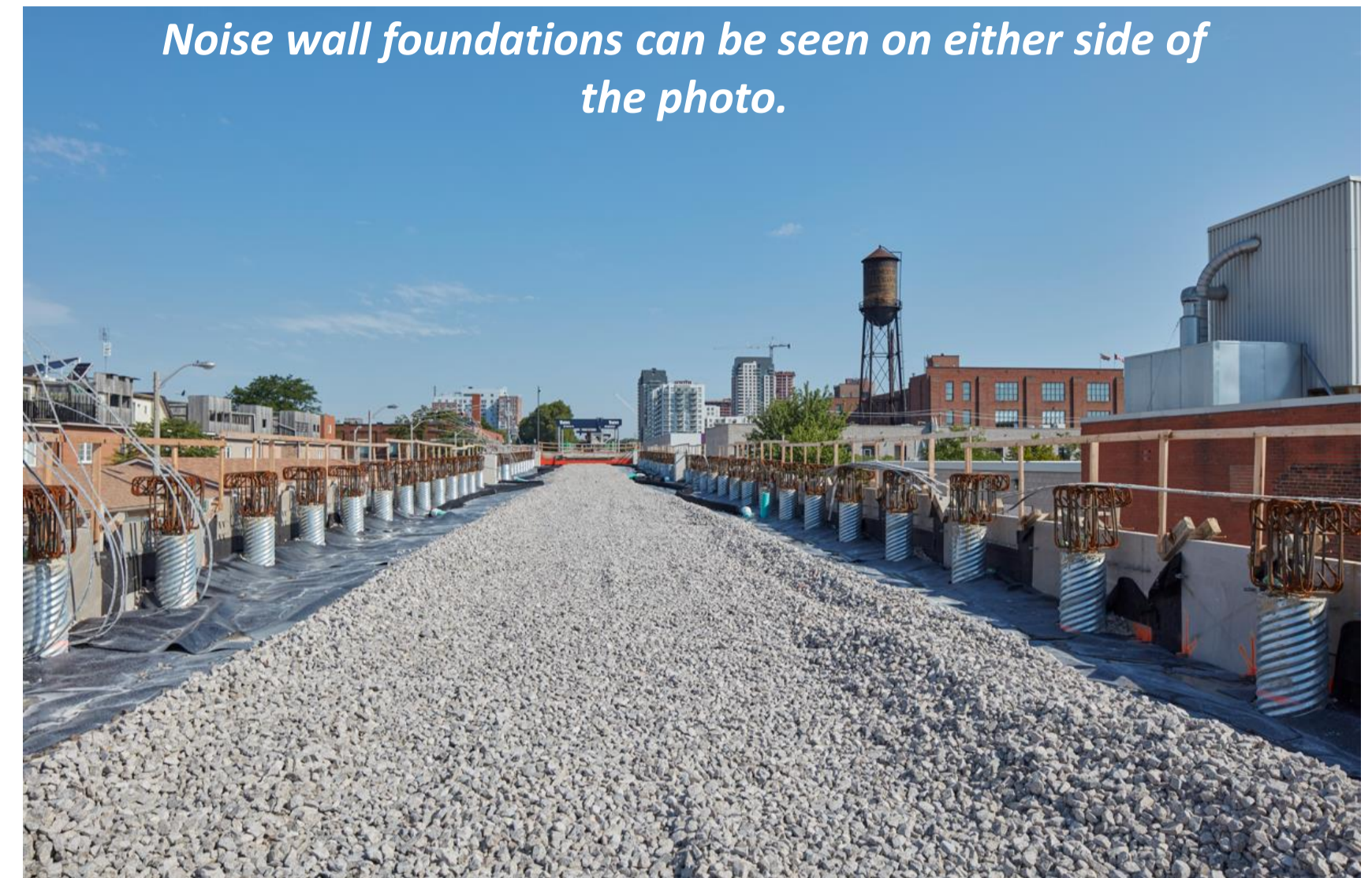
Similar to the north MSE wall, it is a massive soil structure that has been strengthened by placing reinforced straps in horizontal layers throughout the height of the wall that are connected to pre-cast concrete panels.

The panels fit together like puzzle pieces to keep everything in, and the combination of panels and straps allows the wall to be built with a near vertical face because of the tension produced by the straps.

We are currently working on panel installation on the sections of wall from Bloor St to Wallace Ave as well as noise wall foundation installation.

What to expect:

- Monday to Friday, approximately 7 a.m. to 6 p.m.
- Construction activity, vibration and noise
- Expected duration: Continuing until end of Summer 2022



CONSTRUCTION ACTIVITY: IN PROGRESS

Bloor Street Utility Work

Utility work has begun on the south sidewalk and will continue throughout September. Crews will then move to the north side of Bloor Street and complete utility work within the north sidewalk.

What to expect:

- Monday to Friday, approximately 7 a.m. to 6 p.m.
- Construction activity, vibration and noise
- Expected duration: July to September 2022
- Residents in the area can expect sidewalk closures during work – pedestrians will be detoured to opposite sidewalk during work to maintain pedestrian and worker safety

CONSTRUCTION ACTIVITY: IN PROGRESS

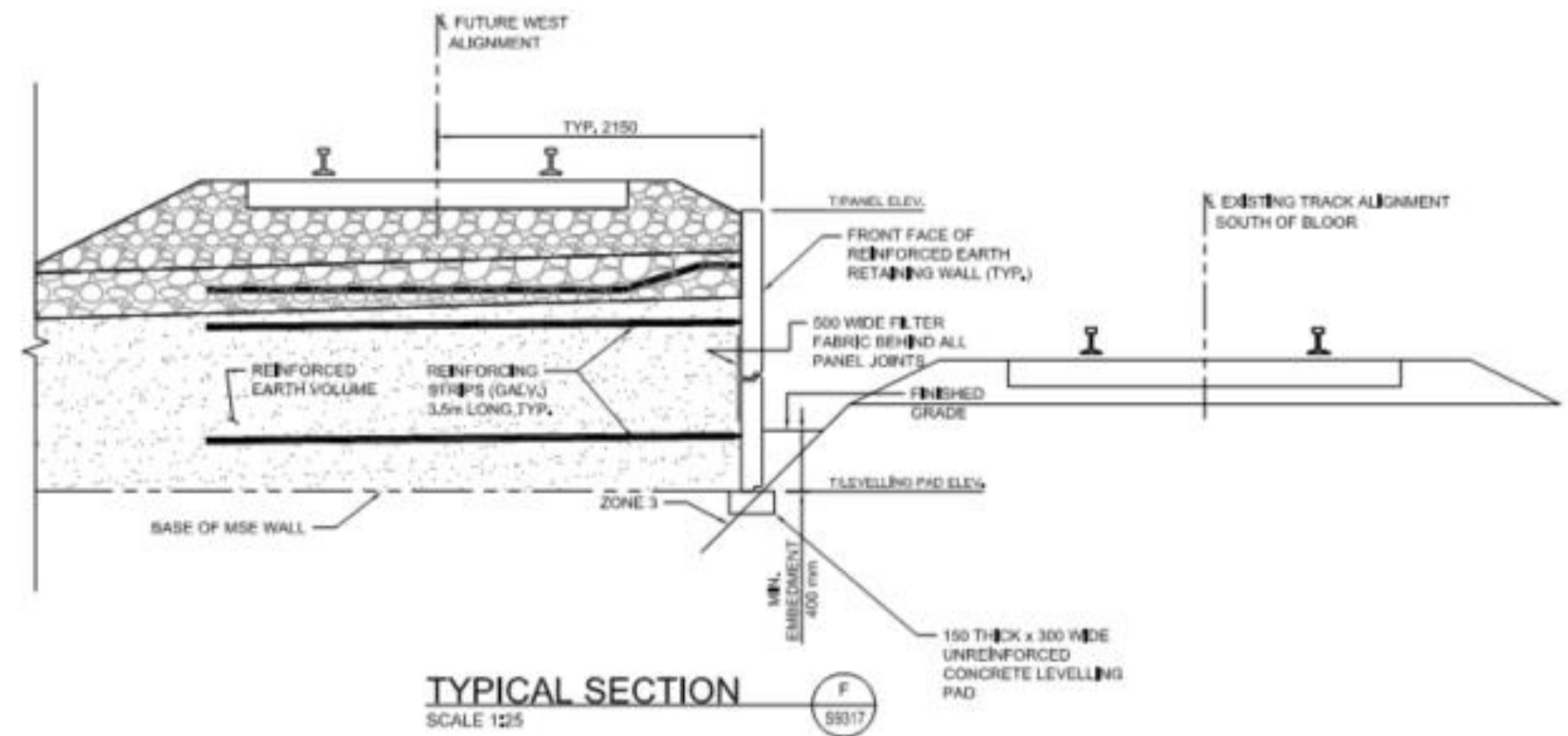
Temporary MSE (Mechanically Stabilized Earth) Wall - South of Bloor

Due to difference in ground elevation between the new mainline track on the west side of the corridor and the diversion track on the east side of the corridor, a temporary shoring wall is needed. We will be utilizing an MSE wall similar to what is already installed on the Project for this as the combination of panels and straps allows a vertical wall to support the difference in ground elevation between the two sides of the corridor.

Crews are currently preparing the area south of Bloor for the temporary MSE wall by completing ground improvements to ensure the ground can support the wall structure. Installation of the MSE panels will begin in August 2022.

What to expect:

- Monday to Friday, approximately 7 a.m. to 6 p.m.
- Material/panel deliveries, construction activity, vibration and noise
- Expected duration: August to September 2022



Design sketch of MSE wall between Mainline track on west and existing Diversion track on east

COMMITTEE DISCUSSION & QUESTIONS

HOW TO STAY INFORMED & OUR NEXT CLC MEETING

KEEPING YOU INFORMED

Communication Methods:

- **Construction Liaison Committee (CLC)**
- Emails to Mailing List
- Weekly E-newsletter
- Construction Notices
- Project Website Updates
- Frequently Asked Questions (FAQ)
- Sharing through elected officials (e-newsletter)
- Metrolinx News Blog
- Wayfinding and Signage

Engagement Tools:

- Virtual Open Houses via Metrolinx Engage
- Working or Advisory Group meetings
- Business Liaison
- Public Meetings
- Technical Tours
- Pop Ups
- Special Events



Stay informed: [metrolinx.com/davenport](https://www.metrolinx.com/davenport) & sign up to our Toronto West e-newsletter

Follow us: [@GOExpansion](https://twitter.com/GOExpansion)

Questions or comments: TorontoWest@metrolinx.com or 416-202-6911

William Norman, Community Engagement and Issues Specialists

NEXT CLC MEETING

- Our next CLC meeting will be held on: Monday, September 26, 2022, from 5-6 p.m.
- Calendar invites will follow.

THANK YOU & STAY SAFE