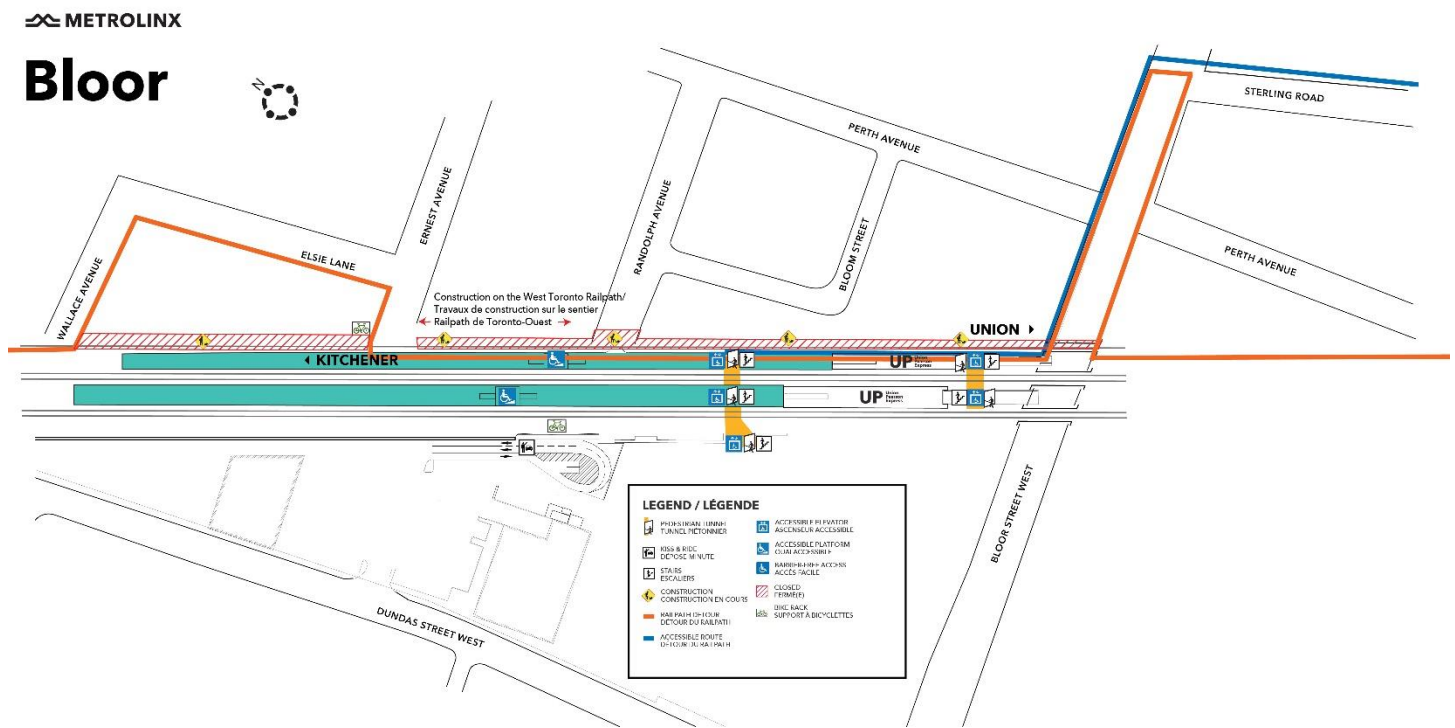


West Toronto Railpath Detour - Wallace Ave to Ernest Ave

April 2023



Project Overview

GO service is expanding to serve you better - with more frequent service, more stations, cleaner technology, and more connections. Across the entire network, our goal is to deliver over 10,000 train trips a week - so you won't need a schedule because you know the next train will be coming soon. GO Expansion will transform the GO rail network from a commuter service into an all-day, rapid system.

Metrolinx will be building a new track on the Kitchener GO line, next to the West Toronto Railpath. Part of this work will include construction of a new entrance to Bloor GO Station, a new community park at Ernest Avenue, and a realignment of the Railpath, on behalf of the City of Toronto.

What You Need to Know

Work to build the railbed for the new track is progressing well. In order to continue construction and prepare for noise wall installation by the platform, the railpath will be temporarily shifted east between Wallace Avenue and Ernest Avenue. There will be daily closures of the railpath between Wallace and Ernest for approximately one week to construct the temporary path.

WHAT TO EXPECT

- Starting as early as April 13, 2023, the Railpath will be closed daily between Wallace Ave and Ernest Ave from 7:00 AM to 5:00 PM for approximately one week to construct the temporary path.
- Temporary fencing will be installed to separate the Railpath from the work area.
- Access to Bloor GO Station will be maintained at all times. Railpath users can detour from Wallace or Ernest Ave to Elsie Lane, to bypass the closure.
- The temporary pathway will remain until work starts on the new park in the same area.
- Please respect all safety and exclusion measures installed to protect you. Thank you for your patience as we work to transform the rail corridor in your area.

HOURS OF WORK

- The majority of work will take place between 7:00 a.m. and 5:00 p.m. on weekdays.
- These dates are tentative and may be subject to change due to weather or unforeseen circumstances
- Work will be conducted as quickly and efficiently as possible to minimize disturbances, but residents and businesses near the rail corridor can expect to hear noise caused by trucks, equipment, and machinery.

Metrolinx Toronto West Community Engagement Team
Contact Us:

✉ Write to us at: TorontoWest@Metrolinx.com

Tel: 416-202-6911

🐦 Find us on Twitter [@GOExpansion](https://twitter.com/GOExpansion)

🌐 Visit the website: www.metrolinx.com