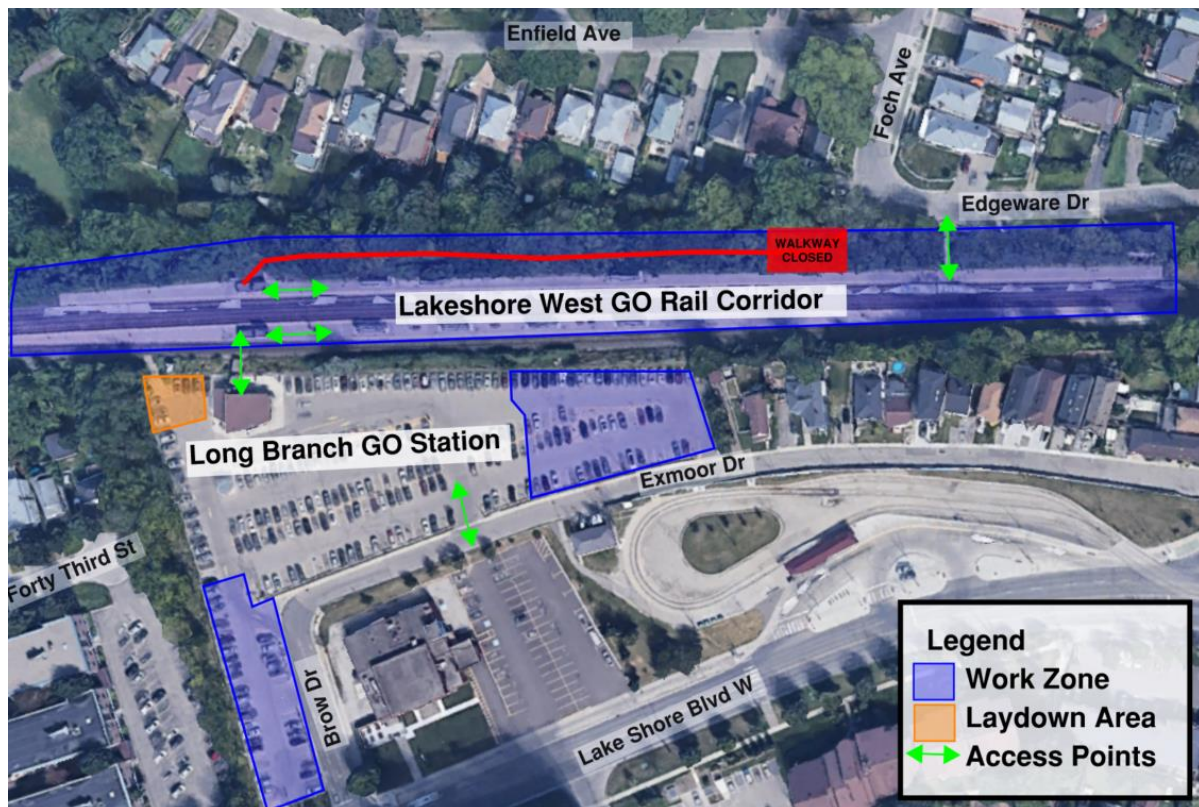


Closure of Pathway near Long Branch GO

April 2023 Update



An aerial image showing the work zone. The work zone depicted is approximate and for illustrative purposes only.

Project Overview

Metrolinx's GO Expansion program is delivering more GO service across the network, including trains every 15- minutes or better on the Lakeshore West Rail Corridor. To support GO Expansion, we are upgrading the rail network and our GO stations to enable more frequent and fully accessible service. This includes accessibility and amenity improvements to Toronto's Long Branch GO Station located at 20 Brow Drive in Etobicoke.

What You Need to Know

Starting the first week of April 2023, access to the pedestrian pathway will be closed as crews begin mobilizing for construction at Long Branch GO Station. The pathway will remain closed until the last week of July 2023. This work will take place following the necessary clearing and cutting of trees and vegetation, as well as set up of the construction and laydown areas. Please see below table for more details.

Information as of: March 17, 2023

Work	Scheduled Start Date	Expected Duration	Work Hours	Description of Work
Mobilization	April 2023	Approx. 4 weeks	Day & Overnight Shift	Preparation of the construction laydown area and mobilization to site. Crews will install temporary fences, gates, an access ramp, and signage to delineate the work and access areas. Office trailers will be stationed within the designated laydown areas.
Tree and Vegetation Removal	April 2023	Approx. 4 weeks	Day Shift	Installation of sediment control and tree protection fence. Tree and vegetation removals to allow for construction. Equipment for this work includes: a tree feller, feller buncher, mulcher, dozer, excavator, and dump trucks.
Pathway Closure	First Week of April 2023	Approx. 16 weeks	Day Shift	The existing pathway will be closed for a duration of 4 Months to allow for construction. Final design for Long Branch GO is to be confirmed.

* Please note that work may be rescheduled due to weather conditions or unforeseen circumstances

What to Expect

- Residents should expect some noise, vibration, dust, and site lighting. Our operation staff will take reasonable precautions to minimize disturbances to residents and commuters.

Hours of Work

- Day work is expected to take place Monday to Friday between 7:00 a.m. and 5:00 p.m.
- Overnight work may be required for safety when there is less train activity and is expected to take place Monday to Saturday between 7:00 p.m. and 5:00 a.m.

Traffic Details

- Increased construction vehicles and equipment can be expected in the work area.
- Please exercise caution around active construction sites.

Mitigation Measures

- All construction equipment including dump trucks will be loaded and staged on site.
- Pointing lights away from residential windows.
- Work area will be safely delineated.
- Monitoring of construction noise and vibration.
- Street sweeper and cleaning as required.

Pedestrian Details

- Pedestrian access to the pathway will be closed starting the first week of April 2023 until the last week of July 2023.
- Please use Enfield Avenue to access Enfield Park.

Transit Details

- No impacts to transit at this time.

This notice can be translated into a different language upon request by emailing us at TorontoWest@metrolinx.com

Cet avis de travaux de construction est disponible en français sur demande. Si vous êtes intéressé, veuillez envoyer un courriel à TorontoWest@metrolinx.com

Contact Us:

- ✉ Write to us at: TorontoWest@metrolinx.com
- 🐦 Find us on Twitter [@GOExpansion](https://twitter.com/GOExpansion)
- 🌐 Visit the website: www.metrolinx.com/LongBranch