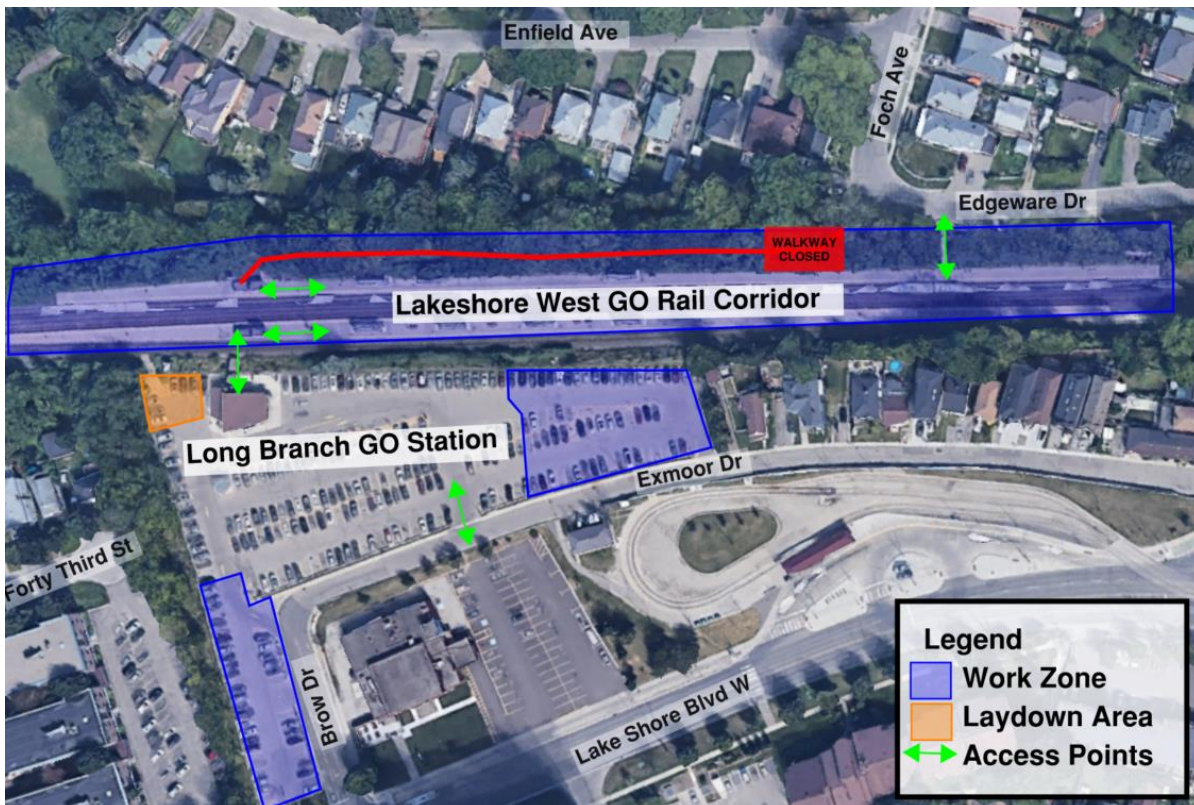


# Overnight Track Work at Long Branch GO

Update for May 2023



*An aerial image showing the work zone. The work zone depicted is approximate and for illustrative purposes only.*

## Project Overview

Metrolinx's GO Expansion program is delivering more GO service across the network, including trains every 15- minutes or better on the Lakeshore West Rail Corridor. To support GO Expansion, we are upgrading the rail network and our GO stations to enable more frequent and fully accessible service. This includes accessibility and amenity improvements to Toronto's Long Branch GO Station located at 20 Brow Drive in Etobicoke.

## What You Need to Know

Starting May 22, crews will be at Long Branch GO Station to prepare the area for the future track realignment. This work will be overnight and mitigation measures will be in place to minimize impacts as much as possible. Please see below table for more details.

Work	Scheduled Start Date	Expected Duration	Work Hours	Description of Work
Track Realignment Civil Preparatory works	May 22, 2023	Approx. 2 weeks	Overnight Shift	Crews be preparing the area for the future track realignment. This work includes removals, placement of granular, and grading between tracks within the rail corridor. Crews will be working on the north and south sides of the tracks.
Utility Relocation	June 26, 2023	Approx. 2 weeks	Overnight Shift	Relocation of a CN utility box within the rail corridor. Crews will be working overnight on the south side of the tracks.

\* Please note that work may be rescheduled due to weather conditions or unforeseen circumstances

### What to Expect

- Residents should expect some noise, vibration, dust, and site lighting. Our operation staff will take reasonable precautions to minimize disturbances to residents and commuters.

### Hours of Work

- Day work is expected to take place Monday to Friday between 7:00 a.m. and 5:00 p.m.
- Overnight work may be required for safety when there is less train activity and is expected to take place Monday to Saturday between 7:00 p.m. and 5:00 a.m.

### Traffic Details

- Increased construction vehicles and equipment can be expected in the work area.
- Please exercise caution around active construction sites.

### Mitigation Measures

- All construction equipment including dump trucks will be loaded and staged on site.
- Pointing lights away from residential windows.
- Work area will be safely delineated.
- Monitoring of construction noise and vibration.
- Street sweeper and cleaning as required.

### Pedestrian Details

- Pedestrian access to the pathway will be closed starting the first week of April 2023 until the last week of July 2023.
- Please use Enfield Avenue to access Enfield Park.

### Transit Details

- No impacts to transit at this time.

This notice can be translated into a different language upon request by emailing us at [TorontoWest@metrolinx.com](mailto:TorontoWest@metrolinx.com)

Cet avis de travaux de construction est disponible en français sur demande. Si vous êtes intéressé, veuillez envoyer un courriel à [TorontoWest@metrolinx.com](mailto:TorontoWest@metrolinx.com)

#### Contact Us:

- ✉ Write to us at: [TorontoWest@metrolinx.com](mailto:TorontoWest@metrolinx.com)
- 🐦 Find us on Twitter [@GOExpansion](https://twitter.com/GOExpansion)
- 🌐 Visit the website: [www.metrolinx.com/LongBranch](http://www.metrolinx.com/LongBranch)