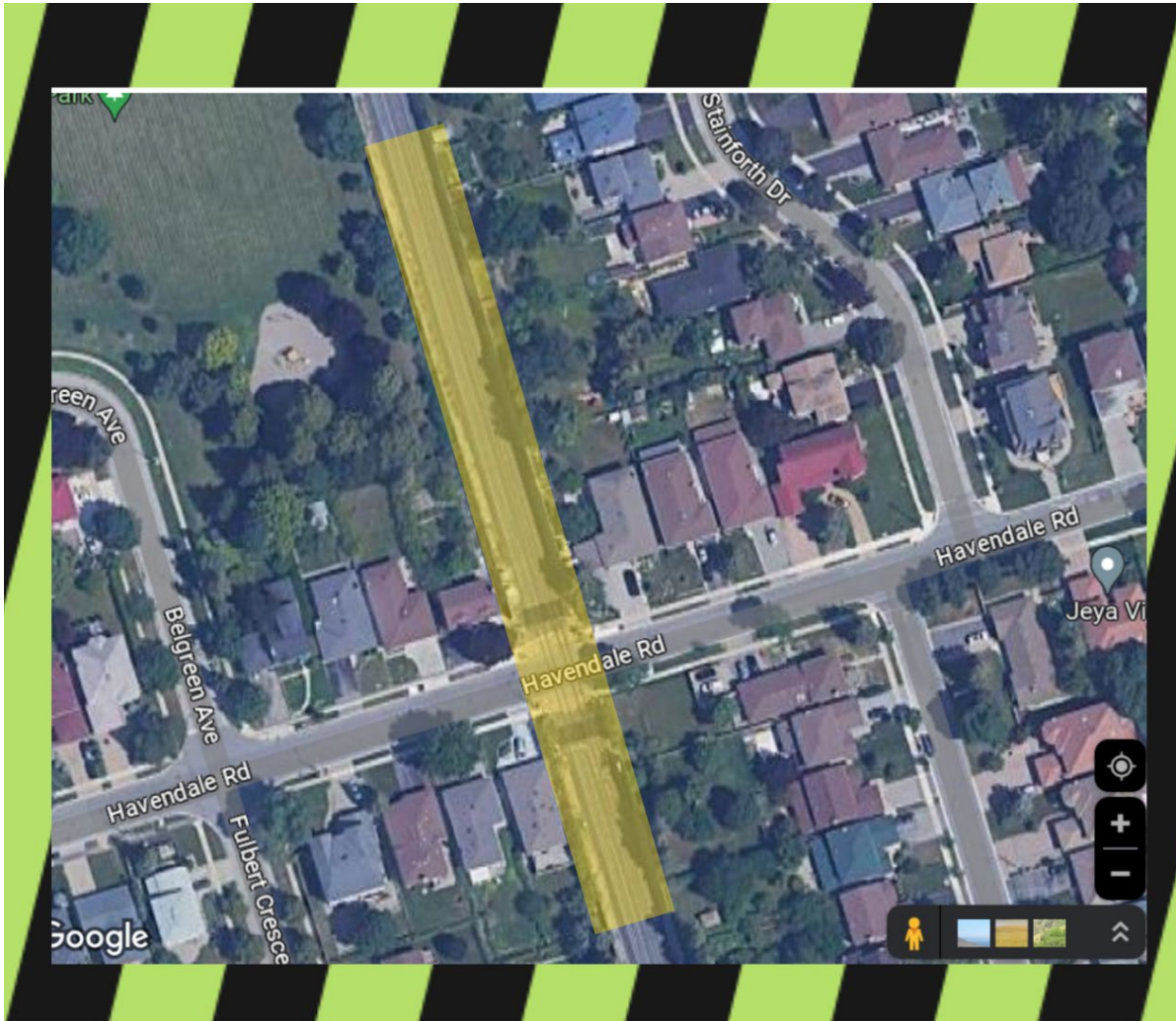


Stouffville Line GO Expansion-Double Tracking

May 2023



What is Happening?

We are working to install double-tracking along the Stouffville Corridor. The double tracking for GO Expansion on the Stouffville line will offer frequent electrified train service in both directions, with trains every 15 minutes or better, as well as access to new stations and transit connections. There will be more trips at every point along the line - from Stouffville to Markham, Scarborough, and Toronto, giving you transit options for doing the things you love, wherever they're found in the region. We're transforming your line into true frequent rapid transit experience, faster, better and easier.

What to Expect:

- Moderate to significant construction noise can be expected during the work: Excavators, crews and materials will be moving through the site.
- Major disturbance can be expected during the Major Work Block, with a large crew and intense movement of excavators, trucks and rail equipment.

Hours of Work:

- The Major work block will start at 8:00 p.m. on May 17th, 2023 and finish on Thursday May 18th at 5:30 a.m.

For More Information:

Metrolinx has a dedicated community engagement team in place that works with residents and businesses in the Toronto East area. If you have any questions, please contact us using the information provided below. You can also sign-up for our Toronto East e-blast newsletter by visiting www.metrolinx.com/subscribe.

Thank you for your patience as we work to transform the rail corridor in your area.

This notice can be translated into a different language upon request by emailing us at TorontoEast@metrolinx.com

Cet avis de travaux de construction est disponible en français sur demande. Si vous êtes intéressé, veuillez envoyer un courriel à TorontoEast@metrolinx.com

Contact Us:

Write to us at: TorontoEast@metrolinx.com

Call us at: 416-202-3900

Visit us at: www.metrolinx.com/goexpansion

Subscribe to our e-newsletter at: www.metrolinx.com/subscribe

Find us on Twitter: @GOExpansion