

Archaeology - Key Findings



- The Assessment Area for the Stage 1 Archaeological Assessment is comprised of the Project Footprint plus 20 metres from the perimeter of the rail alignment, 70 metres from the perimeter of at-grade crossings and bridges and 500 metres from the approximate centre point of the GO station locations.
- Additional Stage 1 Archaeological Assessment is ongoing for small additional footprint areas east of Ritson Road South around Mitchell Avenue and north of Kitchener Avenue, at Hancock Road north of Baseline Road, and at McKnight Road south of Baseline Road.
- Based on the findings of the Stage 1 Archaeological Assessment, approximately half of the Assessment Area has archaeological potential. The potential of archaeological resources will require further archaeological assessments.



Archaeology - Potential Effects & Mitigation Measures



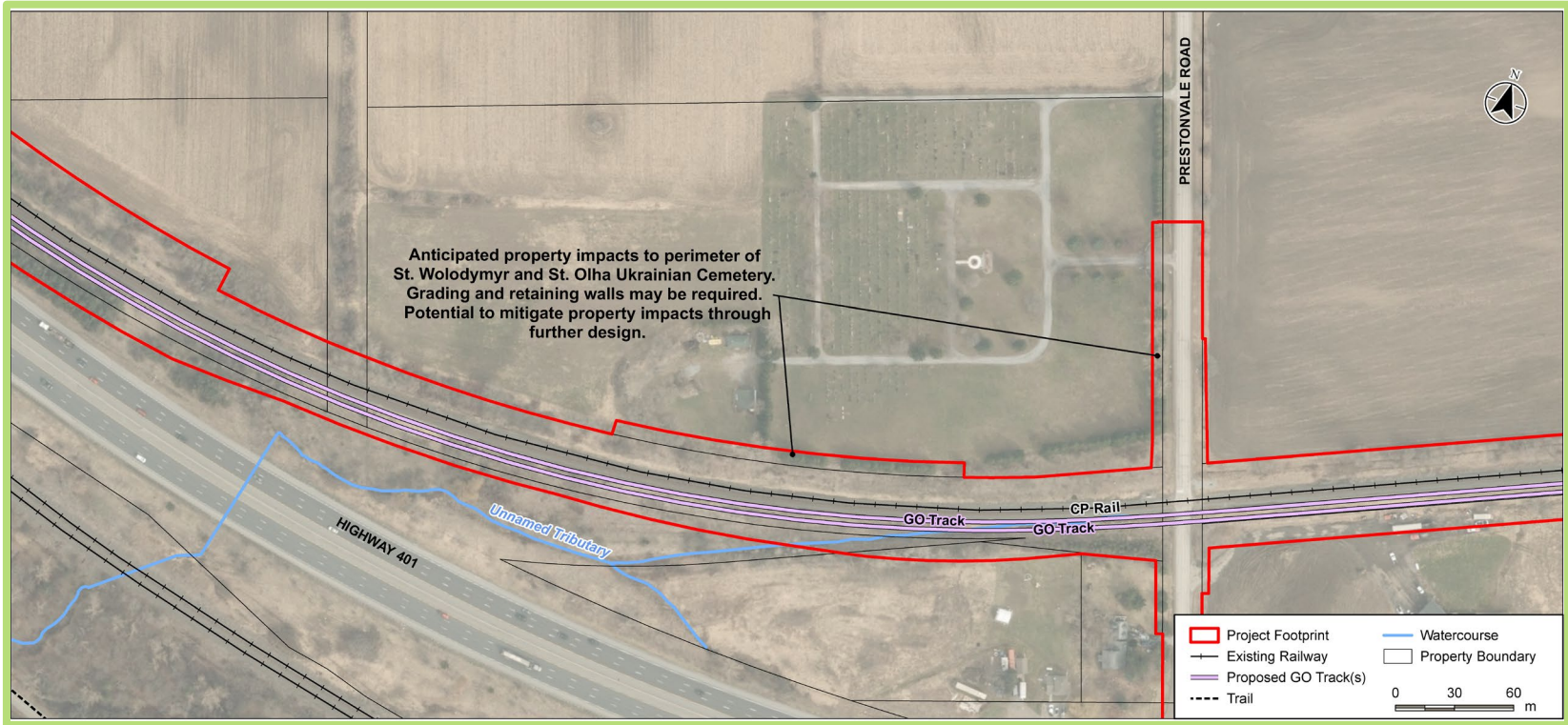
Project's Potential Effects:

- There is potential for the disturbance of unassessed or documented archaeological resources during construction.
- Potential direct impacts to a small area along the boundary of the St. Wolodymyr and St. Olha Ukrainian Cemetery directly adjacent to Prestonvale Road and the rail corridor, which is located within the Project Footprint.
- Impacts to archaeological resources are not anticipated during operations as no additional ground disturbance outside of the previously assessed areas will occur.

Mitigation Measures:

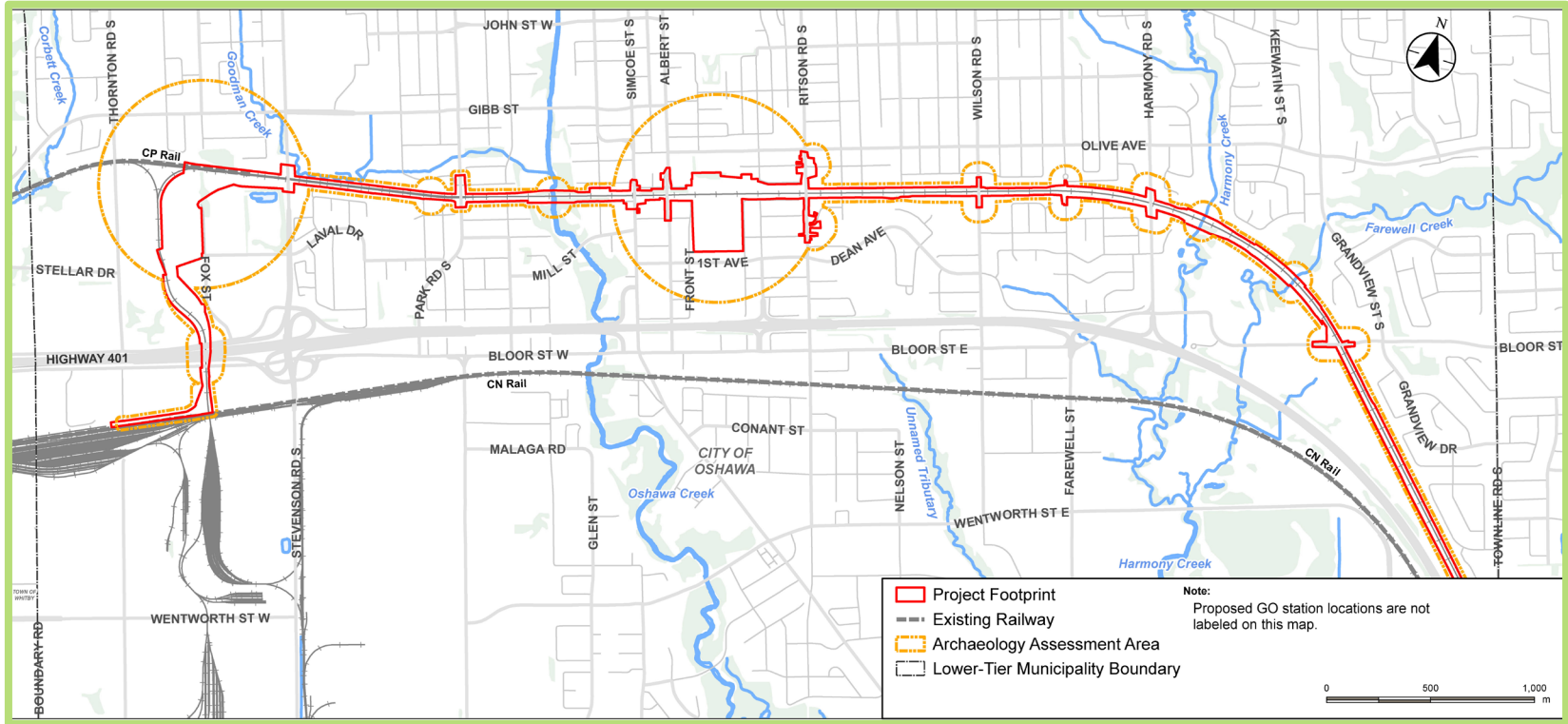
- Further archaeological assessment is currently underway, including Stage 2 Archaeological Assessment.
- Work will stop if unexpected archaeological materials are encountered (or suspected) at a location and the site will be assessed by a licensed archaeologist.

Archaeology - St. Wolodymyr and St. Olha Ukrainian Cemetery



Oshawa to Bowmanville Rail Service Extension

Archaeology - City of Oshawa Assessment Area



Oshawa to Bowmanville Rail Service Extension

Archaeology - Municipality of Clarington Assessment Area



Oshawa to Bowmanville Rail Service Extension

Thank You for Attending!

We appreciate the time you have taken to learn about the EPR Addendum, and we value your opinions. Please provide input online from **June 8 to June 21, 2023** via slido or by emailing DurhamRegion@metrolinx.com.

Let us know if you have questions or comments regarding:

- Project Assessment Area
- Existing conditions or potential environmental effects
- EPR Addendum and TPAP process
- A Notice of EPR Addendum is anticipated to be issued in Fall of 2023 where:
 - Final EPR Addendum and supporting technical documents will be made available for a 30-day review period
 - Following 30-day public review period, the Minister of Environment, Conservation and Parks (MECP) has 35 days to review
 - MECP will issue a notice allowing the proposed Project to proceed or a notice requiring further work to address concerns
 - Statement of Completion will be posted on the Metrolinx website

Stay involved with the Bowmanville Extension by reaching out to the Durham Community Engagement Team below:

- Email us at DurhamRegion@metrolinx.com
- Call us at (416) 202-3900
- Visit our website www.metrolinx.com/bowmanville

Oshawa to Bowmanville Rail Service Extension

