

# Ontario Line CLC Meeting #4 Pape Ave Junior Public School

May 30, 2023



# Land Acknowledgement

Let us take a moment to acknowledge we are on lands that have been, and continue to be, home to many Indigenous Peoples including the Anishnabeg, the Haudenosaunee and the Huron-Wendat peoples.

We are all Treaty people. Many of us have come here as settlers, as immigrants or involuntarily as part of the trans-Atlantic slave trade, in this generation, or generations past.

We acknowledge the historic and continued impacts of colonization and the need to work towards meaningful reconciliation with the original caretakers of this land.

We acknowledge that Metrolinx operates on territories and lands covered by many treaties that affirm and value the rights of Indigenous communities, Nations and Peoples. We understand the importance of working towards reconciliation with the original caretakers of this land.

At Metrolinx, we will conduct business in a manner that is built on a foundation of trust, respect and collaboration.

# Agenda/Discussion Items

## **1) Welcome / Introductions (5mins) - Mark Clancy**

- Land Acknowledgement

## **2) Construction Updates - Mathavan Jaya**

- Bell Utility Relocation update
- Enbridge & THESL updates

## **3) Soil Management and Air Quality Monitoring - Paula Rotenberg**

- Questions/Feedback

## **4) Noise Monitoring Update - Jesse Pakkala**

- Questions/Feedback

## **5) Next Steps**

- Site Tour- Paul Collins

# Safety in your community

## Observation

Trucks constantly using Langley Avenue, despite signs located at both ends of the street indicating that trucks are prohibited.

## Action

Metrolinx Community Engagement contacted the City requesting a site visit and to provide enforcement strategies to ensure signage is observed and pedestrian safety maintained. In the interim, the contractor (Avertex) was asked to station an additional flag person and signage at the intersection of Langley Ave. and Carlaw Ave., to reduce truck traffic along Langley Avenue.

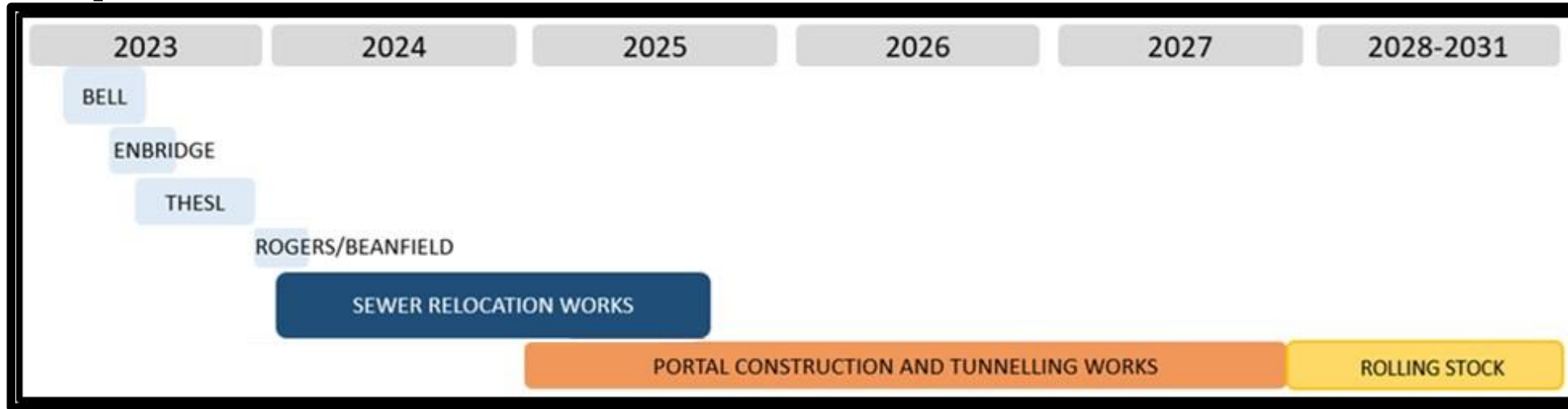
## Recommendations

City personnel visited the site on May 25, 2023, and made the following recommendations:

- In the request to the City for a PDO, the officer must bring a ticket book to issue tickets to truck drivers disobeying the signs on Langley Ave.
- Ensure the flag person at Carlaw/Langley is fully equipped with the 'Stop Sign Paddle' and uses it, in addition to the sign, to advise truck drivers not to enter.
- The PDO's primary role is traffic/pedestrian, safety and direction. Allow the Officers to use their judgement in the issuance of tickets.



# Sequence of Construction Activities



## Bell utility relocation at Pape Ave. & Langley Ave.

- May 2023 - July 2023

## Enbridge Gas relocation at Pape Ave.

- July 2023 - September 2023

## Toronto Hydro relocation at Pape Ave.

- Sep 2023 - Jan 2024

## Rogers/Beanfield

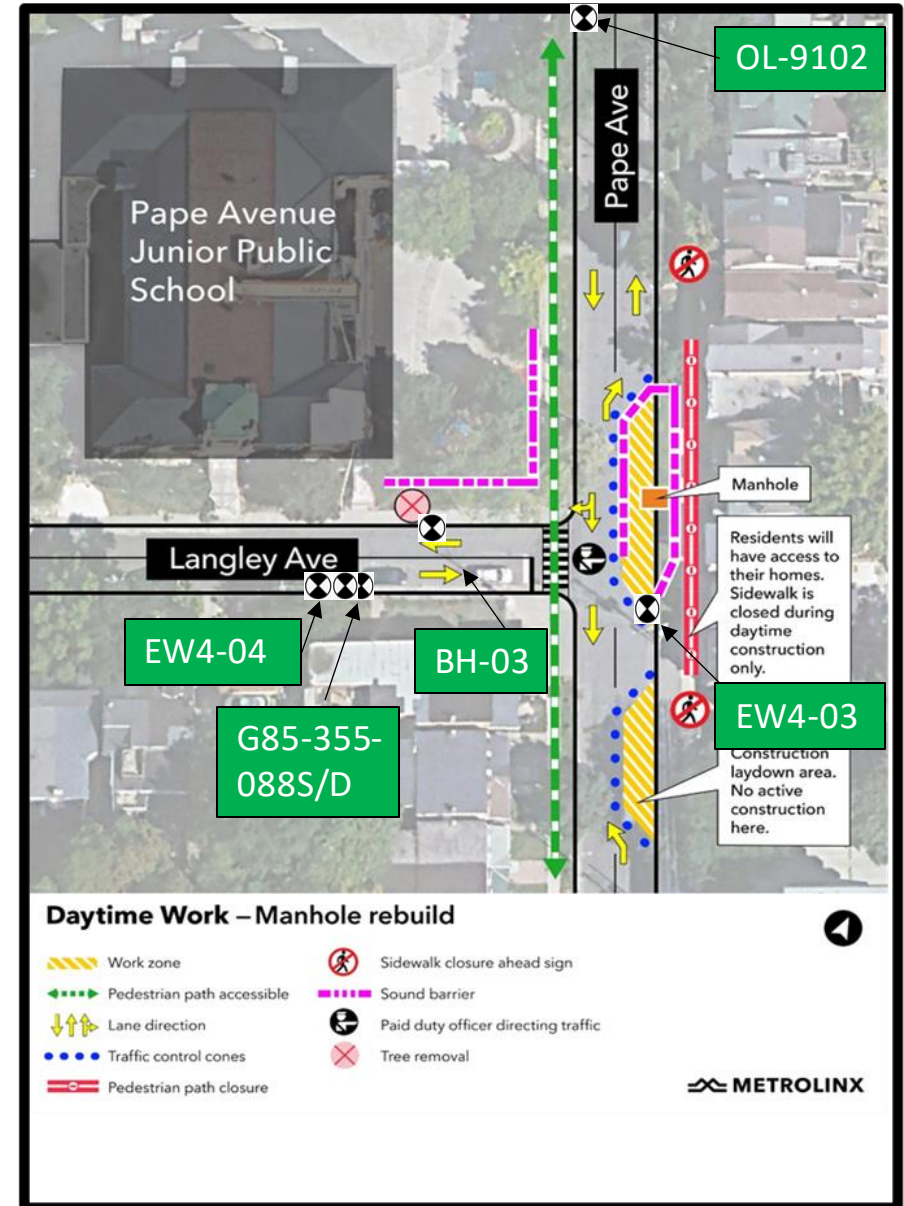
- Jan 2024 - Feb 2024

## Sewer relocation

- Feb 2024 - July 2025

# Soil Management Update

- Soil excavated during Bell manhole demolition and reconstruction has been placed directly into dump trucks for off-site disposal.
- New, clean fill will be used as backfill.



## MECP & TPH Review of Metrolinx Health & Safety Plan

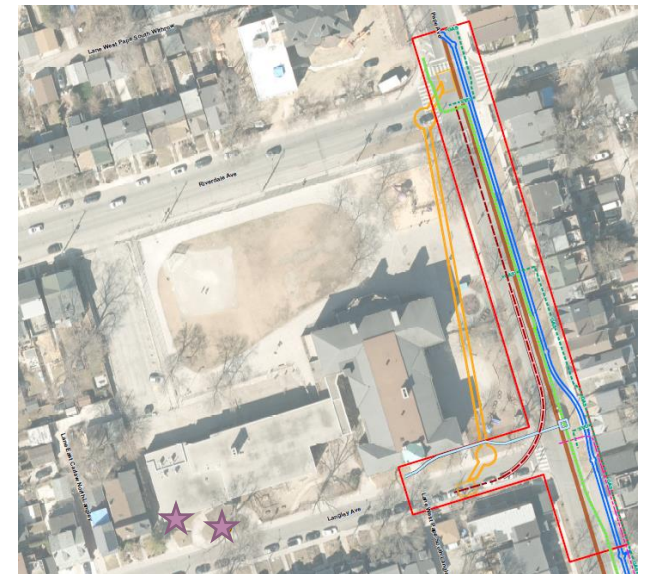
- Ministry of Environment, Conservation and Parks (MECP) provided review comments on the Metrolinx Health & Safety Plan (HASP) on May 18, 2023.
  - Bell's work at Pape and Langley is continuing in compliance with the HASP.
  - MECP's review comments were mainly requests for clarification and additional information.
  - MECP did not provide recommendations in addition to the monitoring or mitigation measures proposed in the Metrolinx HASP.
  - Metrolinx will respond in writing by June 2, 2023, and will share our response with the CLC.
- Toronto Public Health (TPH) has been provided with MECP's review comments, Metrolinx HASP and benzo(a)pyrene soil information.
- TPH has agreed to provide review comments by early June 2023.

# Ambient Air Quality Monitoring Update

- Air Quality monitoring began May 8, 2023 and is ongoing.
- One ambient air quality monitoring station for PM<sub>2.5</sub>, PM<sub>10</sub>, TVOCs.
- One hand-held dust monitor for ambient air spot-checks (PM<sub>2.5</sub>, PM<sub>10</sub>).
- Highlights from weekly ambient air quality monitoring (May 8 – May 19, 2023):
  - TVOCs – No AAQC or CAAQS criteria available
    - One incident of elevated TVOC levels on May 12 – occurred when gasoline lawn mower was operating in the vicinity of the monitoring station (unrelated to construction)
  - PM<sub>10</sub> AAQC Criteria – 50 µg/m<sup>3</sup> (24-hour average)
    - No PM<sub>10</sub> exceedances
  - PM<sub>2.5</sub> CAAQS Criteria – 27 µg/m<sup>3</sup> (24-hour average)
    - No PM<sub>2.5</sub> exceedances



Air Quality Monitoring Station



Air Quality Monitoring Locations



# Indoor Air Quality Monitoring Update

- Three indoor air quality (IAQ) monitoring stations for PM<sub>10</sub> and TVOCs in Classrooms 3, 10 and 28.
- Highlights from weekly IAQ monitoring (May 8 – May 19, 2023):
  - TVOC guideline value – 440 ppb
    - TVOC average results did not exceed the guideline value in any classroom during weeks May 8 and May 15.
    - One measurement of 445 ppb was measured within a 5-minute period in Classroom 3 on May 11, but not sustained; there was no correlating elevated level measured in ambient TVOC levels.
  - PM<sub>10</sub> guideline value – 0.05 mg/m<sup>3</sup>
    - **Classrooms 10 & 28** (occasionally occupied) – PM<sub>10</sub> monitor installation in Classroom 28 delayed to week of May 15 (equipment failure). Average weekly PM<sub>10</sub> concentrations were below the guideline value. Elevated levels were measured occasionally but not sustained for extended periods of time.
    - **Classroom 3** (continuously occupied) – The average weekly PM<sub>10</sub> concentrations measured were 0.052 mg/m<sup>3</sup> and 0.058 mg/m<sup>3</sup> for the weeks of May 8 and May 15, respectively. PM<sub>10</sub> was measured above the guideline value but was generally in keeping with the ambient air results, where PM measurements were slightly elevated but still below the applicable criteria. There did not appear to be a correlation between indoor PM<sub>10</sub> measurements and outdoor construction activities.

# Noise Monitoring Update

- Construction noise monitoring began May 8 and is currently ongoing
- Two noise monitoring locations were installed to record Lmax/Leq (along Langley and Pape) with one monitoring location also recording Lpeak (along Langley)
- Highlights from weekly noise monitoring (May 8 - May 19):
  - 120dB Lpeak
    - Lpeak measurements began during week of May 15 due to installation issues
    - No alerts during week of May 15
  - 69dBA Leq (daytime average noise from 07:00 - 18:00)
    - Typical noise levels at both Langley and Pape monitors have been between 63 - 67 dBA (top of barrier)
    - An alert was received on May 16 - technical staff investigated and determined the alert was triggered during hydrovac operation
      - The alert did not result in an exceedance at the school, and levels behind the temporary noise barrier were determined as below 70 dBA
      - The team will continue to monitor closely during hydrovac operations moving forward
  - 85dBA Lmax
    - Consistent non-construction related exceedances during the day from playground (85 - 92 dBA) and other ambient noises (e.g., vehicle pass-by, horns and sirens, etc.)
    - Some construction noises (e.g., material dropping) were also noted during the period, however, these did not cause Leq or Lpeak alerts



# What's Next

## CLC Next Steps

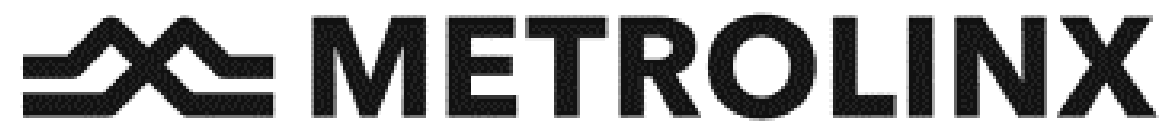
- Metrolinx to share recording of CLC meeting
- Metrolinx to update Health and Safety Plan based on feedback and will share a revised edition with CLC members
- Monitoring summaries to be shared with CLC
- Next CLC/walking tour **June 27, 2023 (to be confirmed)**

## Construction Activities Commence

- Enbridge utility relocation at Pape Ave. & Langley Ave. expected to begin July 2023
- South side of rail corridor at Pape Ave. construction to begin May 2023. Access road in operation until Sep 2024

## Continued Outreach and Engagement

- Metrolinx, TDSB, Pape School and Pape Children's House to meet regularly to discuss project activities
- Metrolinx will keep the community informed beyond the CLC
  - Regular updates to elected officials (Councillor, MPP, MP and School Trustee)
  - Canvassing (door-knocking) within the school area to speak with residents directly and respond to questions/concerns
  - Community notices about upcoming construction activities
  - Community pop-ups in person and virtual



## Hand-held Air Quality Monitors

- Handheld monitors can supplement data from monitoring stations
  - The handheld units can provide more mobility and flexibility in monitoring locations
  - Location can be adjusted to be closer to areas of concern
  - Measurements can be taken upwind and downwind for comparison
  - Limitations such as access to a permanent power supply are not an issue for intermittent use of handheld units
  - The frequency of measurements can be adjusted based on time sensitivity or if there are certain activities of concern (e.g., causing visible dust)
- While handheld units offer more flexibility, a critical limiting factor in their use is the higher level of effort required, since a staff person must be on-site for manual operation (while stationary monitoring units can measure continuously with no staff in attendance)



DustTrak DRX PM Monitor

# Indoor Air Quality Monitoring Locations

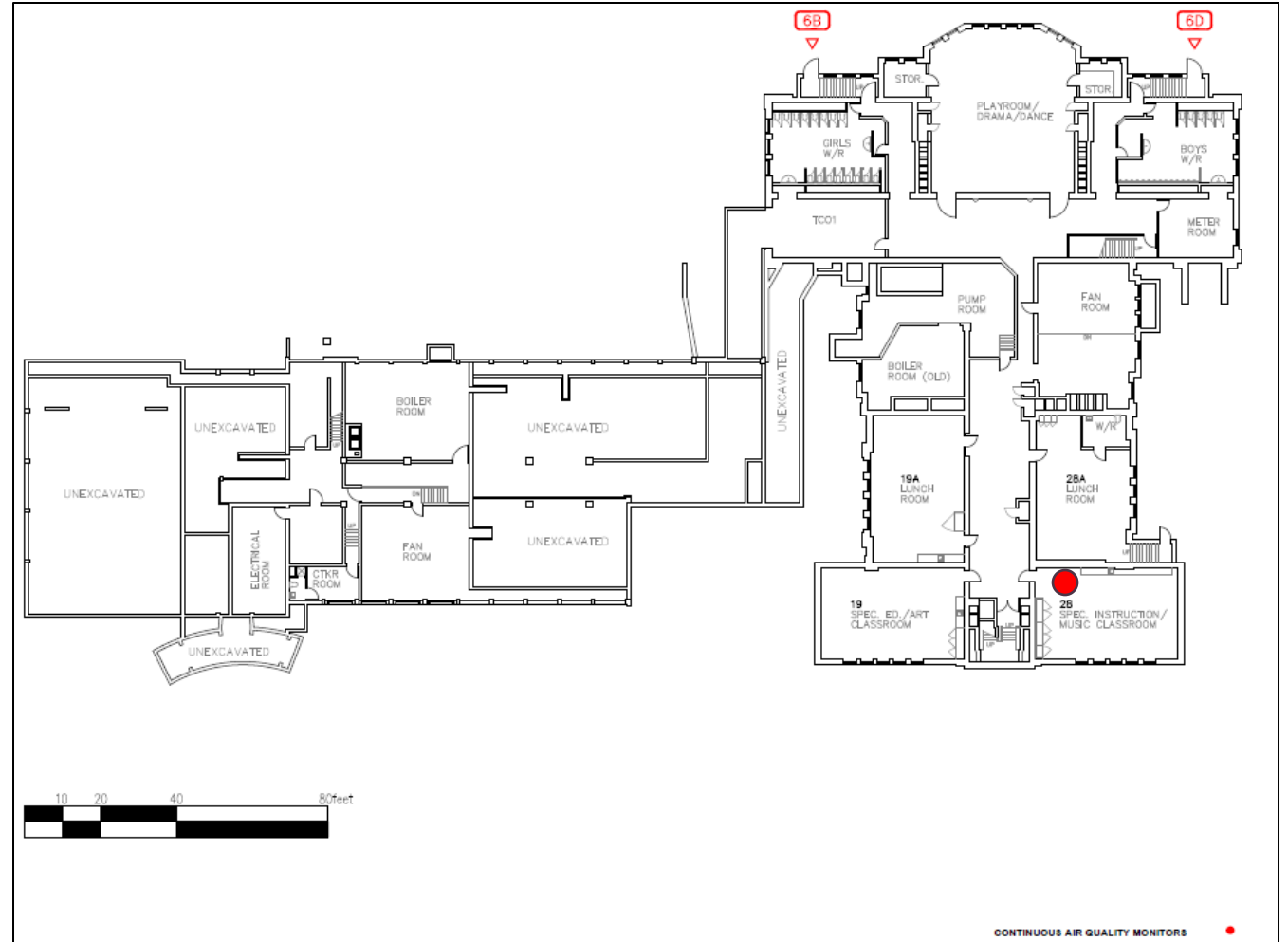
- Three indoor air quality locations
- Monitoring for PM10, TVOCs



ppbRAE 3000+ TVOC Monitor

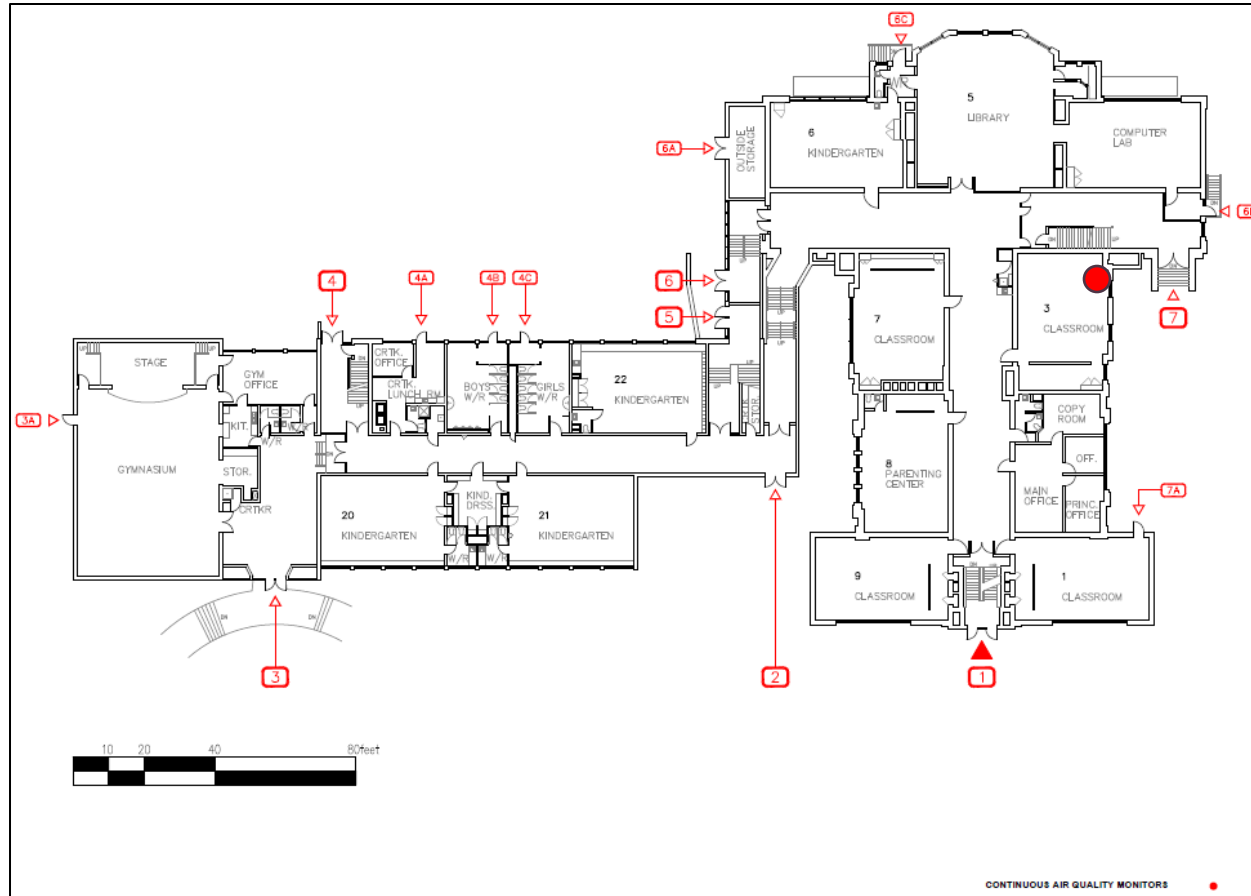


DustTrak DRX PM Monitor



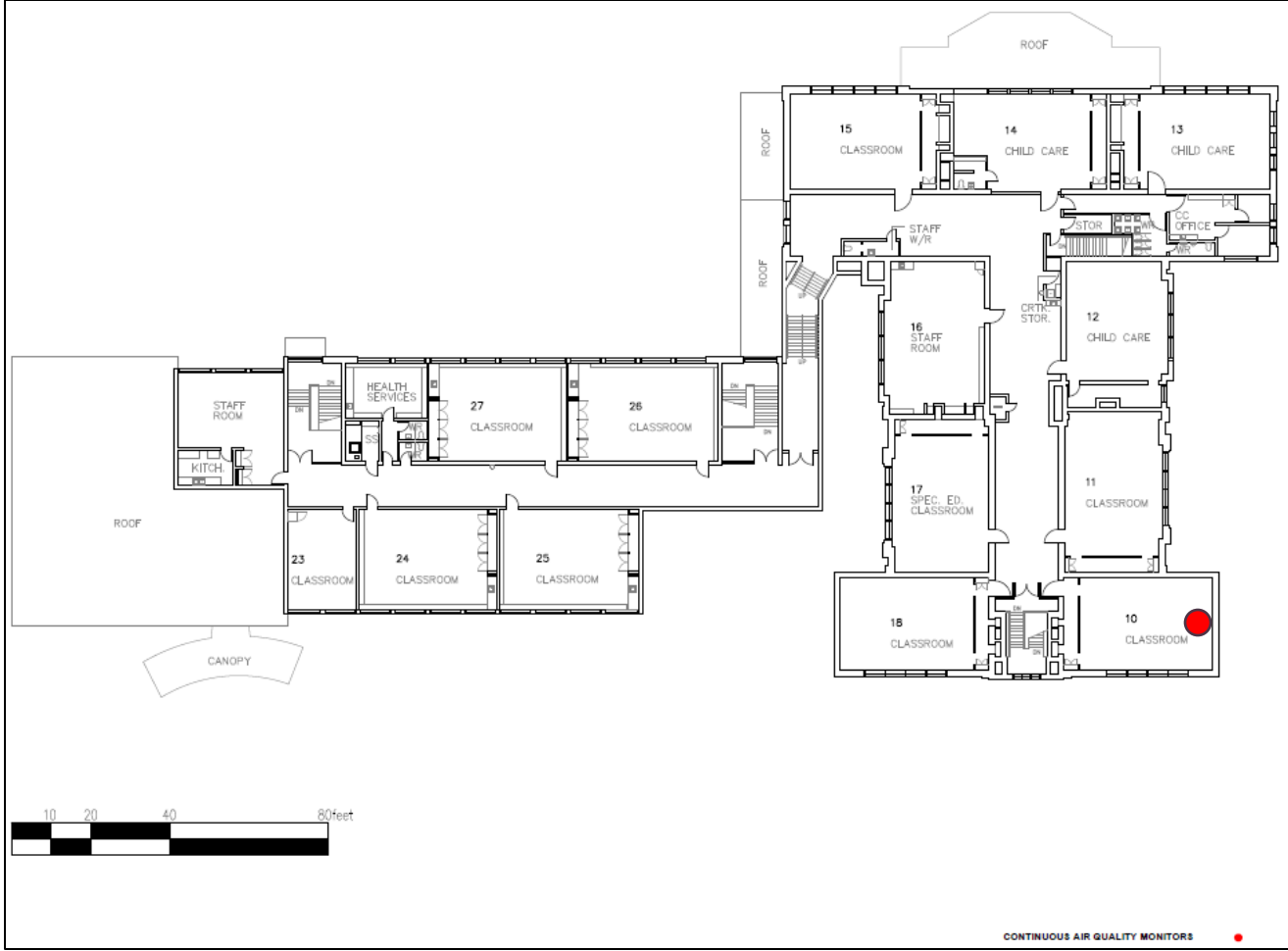
Basement Floor Monitoring Location

# Indoor Air Quality Monitoring Locations



First Floor Monitoring Location

# Indoor Air Quality Monitoring Locations



Second Floor Monitoring Location