

Ontario Line

CLC Meeting #5

Pape Avenue Junior Public School

June 27, 2023

Agenda/Discussion Items

1) Welcome/Introduction

2) Action Items

- Actions from May 30 CLC

3) Construction Update

- Bell utility relocation stage two update
- Enbridge update

4) Next Steps

- Communications and engagement
- Construction activities

May 30 Action Item Review

Action	Response
Metrolinx to take action to stop workers smoking at Bell work site	Onsite field specialists will continue to speak with crew members to remind them to smoke at dedicated smoking areas
Status of Toronto Public Health (TPH) review on the Health and Safety Plan	TPH has reviewed and provided a written response to Metrolinx. TPH review shared with CLC June 26 th
Metrolinx to respond to TDSB reports on baseline noise levels and Health and Safety Plan.	Metrolinx received the TDSB/ECHO Baseline Report and Metrolinx Health and Safety Plan on May 29 th . Metrolinx has reviewed and is setting up a meeting with the TDSB to review next week.
Long-term noise barrier around the school yard, including installation timing.	Metrolinx is working on a design in consultation with TDSB/Pape School. Once the TDSB and Pape School are supportive of the plan, details will be shared with the CLC.
Metrolinx to share results of the Health and Safety Plan audit	Audit completed by Health and Safety Director, Ontario Line Delivery Partner. Results shared with CLC June 26 th .
Share Enbridge work plan with the CLC well in advance of the work starting	Metrolinx is working with Enbridge on the plan and has committed to sharing details with the TDSB/Pape School and CLC members. Timing TBC.
Metrolinx will stop work when school notifies Metrolinx that the work is disrupting learning	Metrolinx will act upon the school notifying of disruption to the student learning environment
Metrolinx available to meet on site with community members to review issues and mitigations related to Bell work site	Site walk is scheduled for June 27 th .
Metrolinx to respond to MECP comments on Health and Safety Plan Soil Management and share with CLC	Metrolinx to share details with the CLC by June 28.
Provide weekly noise/vibration and air quality reports to CLC	Metrolinx to share with the CLC by June 28.

Sequence of Construction Activities

Construction will not take place on the last day of school (Friday June 30) and Monday July 3, 2023. Security will be stationed at the site on these days.

Bell utility relocation at Pape Ave. & Langley Ave.

- May 2023 - July 2023 (**stage two starting on Tuesday July 4, 2023**)

Enbridge Gas relocation at Pape Ave.

- July 2023 - September 2023 (**tentative start date is Monday, July 10, 2023**)

Toronto Hydro relocation at Pape Ave.

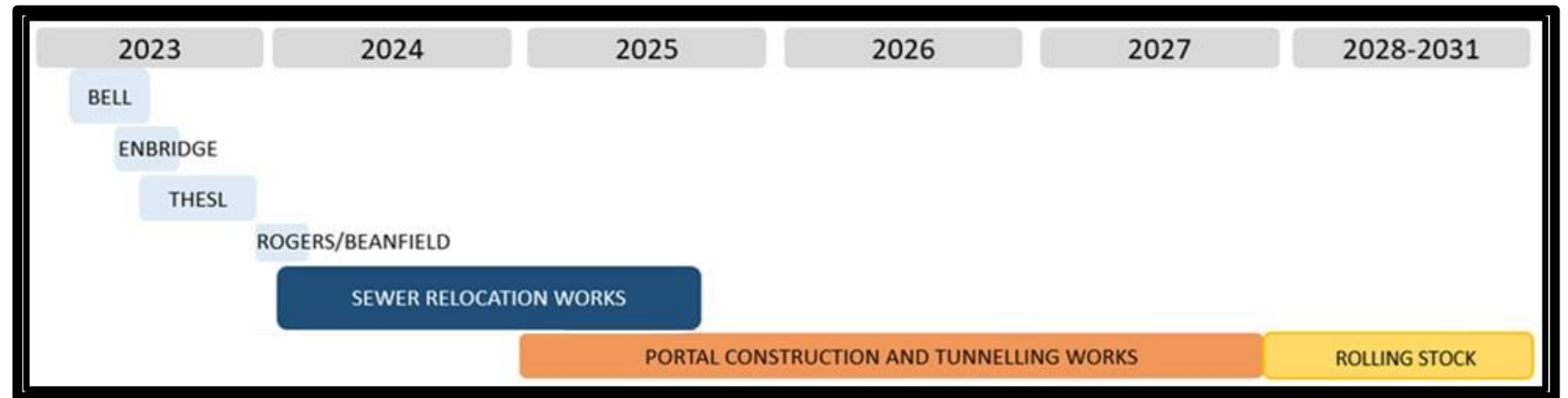
- Sep 2023 - Jan 2024

Rogers/Beanfield

- Jan 2024 - Feb 2024

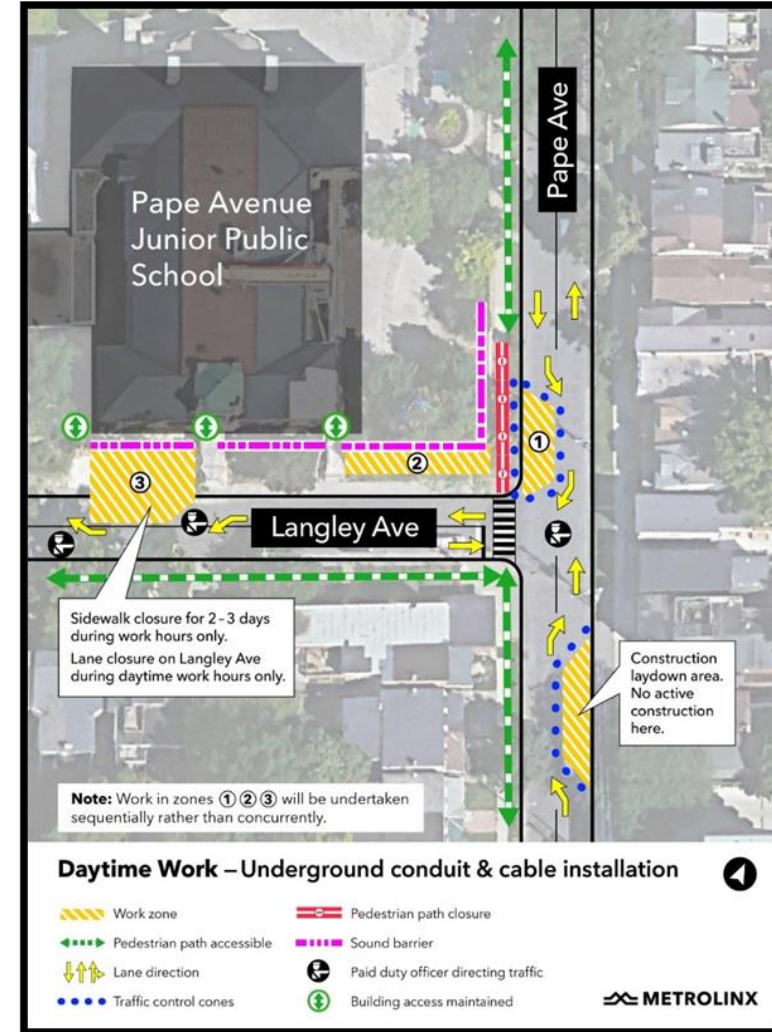
Sewer relocation

- Feb 2024 - July 2025



Bell Utility Relocations - Stage Two

- Bell utility relocation work will begin on Tuesday July 4, 2023.
- Work will take place during the daytime, between 7:00 a.m. - 7:00 p.m. for approximately two-three weeks
- Temporary traffic lane closures and pedestrian rerouting will be in place to complete this work.
- Traffic lane and sidewalk closures on Langley Ave will be removed at the end of each workday.
- Construction fencing will be installed to separate the work zones.
- Existing noise barriers will remain in place.



Enbridge Gas Relocation at Pape Ave

Enbridge will install a new gas line at the intersection of Pape Ave and Riverdale Ave.

Enbridge crews will dig an open trench across the intersection to install the new line.

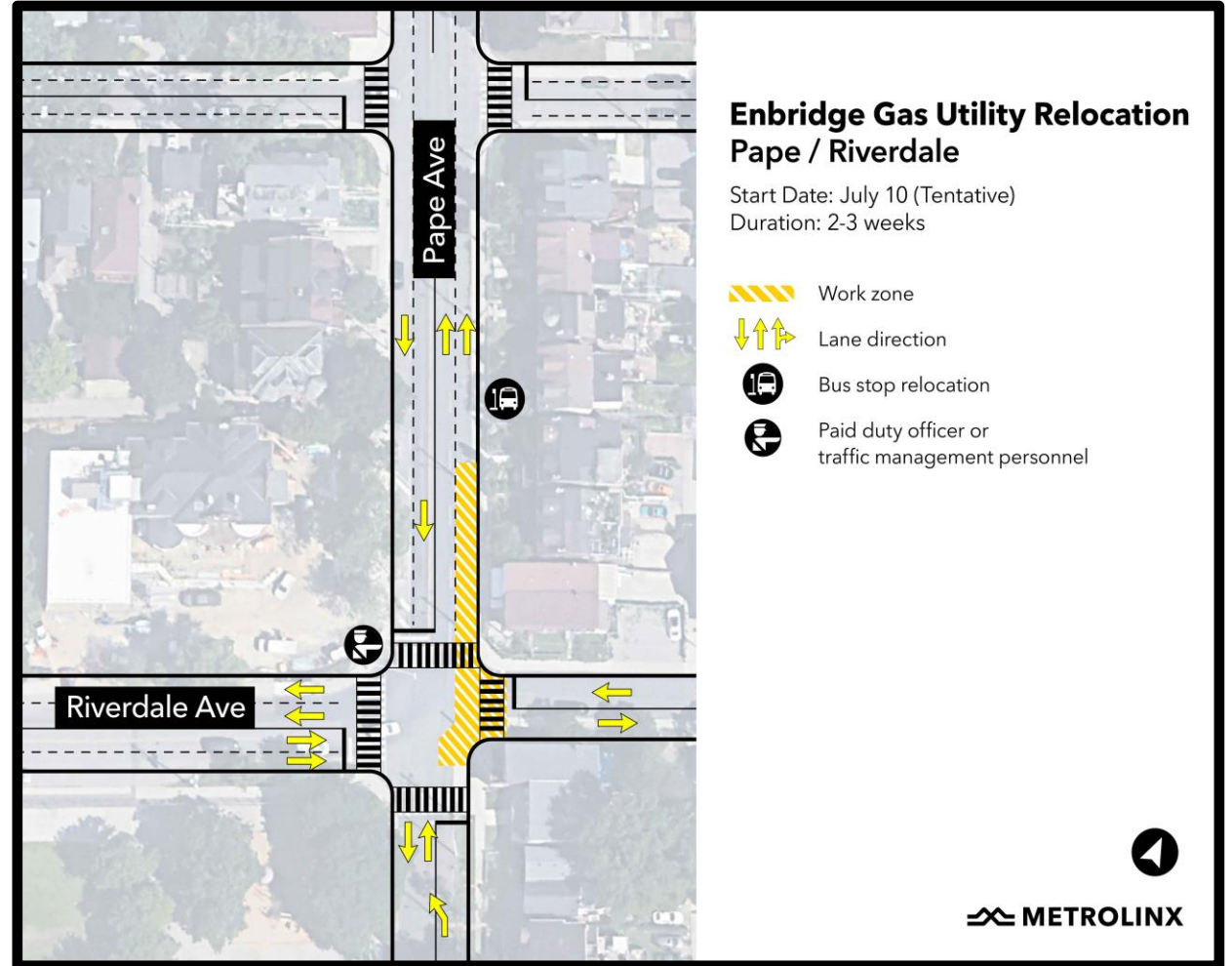
Work to begin as early as Monday, July 10, 2023, and take place between 7:00 a.m. - 5:00 p.m. for approximately two (2) weeks.

Alternating lane closures on Pape Ave and Riverdale Ave will be required.

Temporary pedestrian rerouting will be in place at the east crosswalk.

Traffic and pedestrian access to Pape Jr Public School will be maintained

A paid duty officer and/or traffic control personnel will be on-site.



What's Next

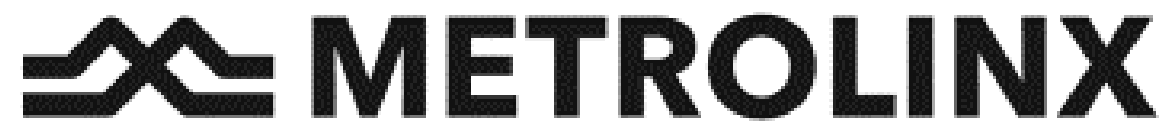
Communications and Engagement:

Metrolinx to share meeting summary 48-hours after the CLC

- The Pape Ave Jr. PS CLC will be held on the last Tuesday of every month from 7:00 p.m. - 8:00 p.m.
- CLC meeting cadence for 2023:
 - August 29
 - September 26
 - October 31
 - November 28
- Weekly construction updates will be shared with Pape Children's House throughout Summer 2023
- Metrolinx will schedule a meeting with TDSB to review ECOH baseline noise monitoring and review of health and safety plan

Construction Activities Commence

- Bell utility relocations stage two is scheduled to begin on Tuesday, July 4, 2023.
- Enbridge utility relocation at Pape Ave. & Langley Ave. is tentatively scheduled to begin Monday, July 10, 2023.
- Access road construction on south side of rail corridor at Pape Ave. expected to begin July 4, 2023. Access road in operation until Sep 2024.

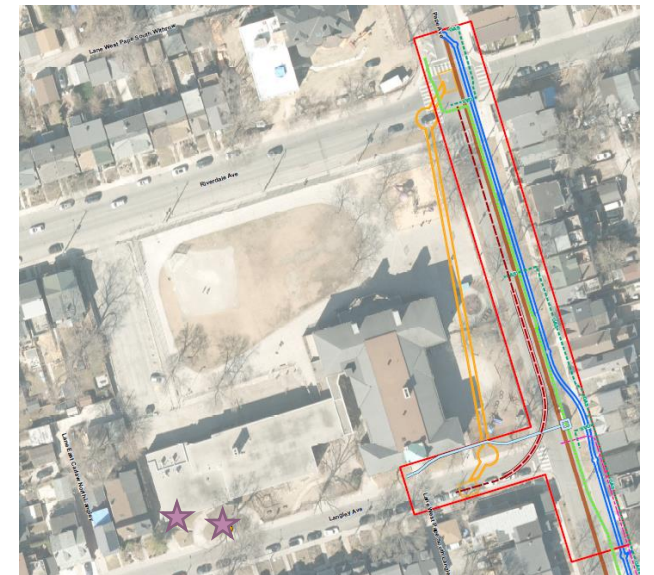


Ambient Air Quality Monitoring Update

- Air Quality monitoring began May 8, 2023 and is ongoing.
- One ambient air quality monitoring station for PM2.5, PM10, TVOCs.
- One hand-held dust monitor for ambient air spot-checks (PM2.5, PM10).
- Highlights from weekly ambient air quality monitoring (May 22 - June 18, 2023):
 - TVOCs Warning Level - 813 ppb (15-minute average) (70% of Health Canada indoor TVOC criterion used as reference)
 - No alerts / exceedances
 - PM10 AAQC Criteria - 50 $\mu\text{g}/\text{m}^3$ (24-hour average)
 - Weeks of June 4 and June 11 - Seven warnings, two alerts and four exceedances
 - PM2.5 CAAQS Criteria - 27 $\mu\text{g}/\text{m}^3$ (24-hour average)
 - Weeks of May 28, June 4 and June 11 - Ten warnings, thirteen alerts and four exceedances
 - Alerts and exceedances were not attributable to construction activities
 - Environment Canada and Climate Change issued Special Air Quality Statement - deteriorating air quality due to wildfires



Air Quality Monitoring Station



Air Quality Monitoring Locations

Indoor Air Quality Monitoring Update

- Three indoor air quality (IAQ) monitoring stations for PM₁₀ and TVOCs in Classrooms 28 (basement), Classroom 3 (first floor), Classroom 10 (second floor).
- Highlights from weekly IAQ monitoring (May 22 - June 16, 2023):

TVOC guideline value - 440 ppb

- No data available for the week of May 22 in Classroom 3 (equipment maintenance), and partial data available in Classroom 28 for the week of June 5 (power connection/equipment issues).
 - TVOC average results did not exceed the guideline value of 440 ppb in any classroom during weeks May 22-26, May 29-June 2, June 5-9 and June 12-16.
 - One measurement of 859 ppb was measured within a 5-minute period in Classroom 28 on May 30, but not sustained.



Classroom 10



Classroom 28

Indoor Air Quality Monitoring Update

- Highlights from weekly IAQ monitoring (May 22 - June 16, 2023):

PM₁₀ guideline value - 0.05 mg/m³

Deteriorating air quality due to wildfires was reported in the Special Air Quality Statement from Environment and Climate Change Canada the week of June 5-9.

- **Classrooms 10 & 28** (occasionally occupied)
 - The week of June 5-9, the average weekly PM₁₀ concentrations exceeded the guideline value of 0.05 mg/m³ in Classroom 10 (0.069 mg/m³) and Classroom 28 (0.079 mg/m³).
- **Classroom 3** (continuously occupied) - Partial data available for the weeks of June 5-9 and June 12-16 (power disconnection issues).
 - The average weekly PM₁₀ concentrations in excess of the guideline value of 0.05 mg/m³ were measured the week of May 29-June 2 (0.060 mg/m³) and the week of June 5-9 (0.080 mg/m³).

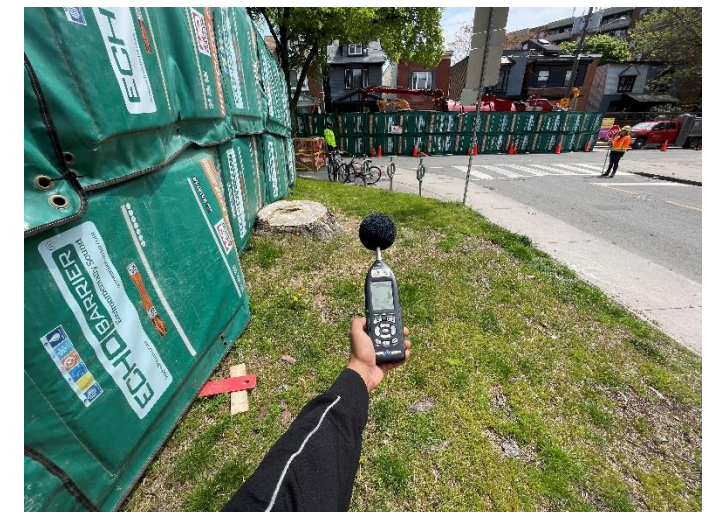
Stantec will continue to monitor the data in the coming weeks in an effort to identify trends and potential contributing factors (e.g., construction activities, classroom activity, weather, etc.).



Classroom 3

Noise Monitoring Update

- Construction noise monitoring began May 8, 2023 and is currently ongoing
- Two noise monitoring locations were installed to record Lmax/Leq (along Langley and Pape) with one monitoring location also recording Lpeak (along Langley)
- Highlights from weekly noise monitoring (May 22 – June 16, 2023):
 - 120dB Lpeak
 - No Lpeak alerts due to construction since beginning of monitoring
 - 69dBA Leq (daytime average noise from 07:00 – 18:00)
 - Typical noise levels at both Langley and Pape monitors are between 58 – 67 dBA (top of barrier)
 - 85dBA Lmax
 - Majority of reviewed Lmax exceedances are from playground (85 – 92 dBA) and other ambient noises (e.g., vehicle pass-by, horns and sirens, etc.)
 - Some construction noises (e.g., material dropping) were also noted during the period, however, these did not cause Leq alerts
- Exceedance Reviews
 - An Alert was received on May 16 with 70 dBA at Langley monitor – OLTA investigated and determined the Alert was triggered during hydrovac operation
 - OLTA investigated the Alert, including measurement of the noise reduction provided by the temporary noise barrier during hydrovac operation
 - The Alert did not result in an Exceedance at the school playground, and levels behind the temporary noise barrier were determined to be below 69 dBA
 - Investigation identified options to further improve effectiveness of noise barriers



Hand-held Air Quality Monitors

- Handheld monitors can supplement data from monitoring stations
 - The handheld units can provide more mobility and flexibility in monitoring locations
 - Location can be adjusted to be closer to areas of concern
 - Measurements can be taken upwind and downwind for comparison
 - Limitations such as access to a permanent power supply are not an issue for intermittent use of handheld units
 - The frequency of measurements can be adjusted based on time sensitivity or if there are certain activities of concern (e.g., causing visible dust)
- While handheld units offer more flexibility, a critical limiting factor in their use is the higher level of effort required, since a staff person must be on-site for manual operation (while stationary monitoring units can measure continuously with no staff in attendance)



DustTrak DRX PM Monitor

Indoor Air Quality Monitoring Locations

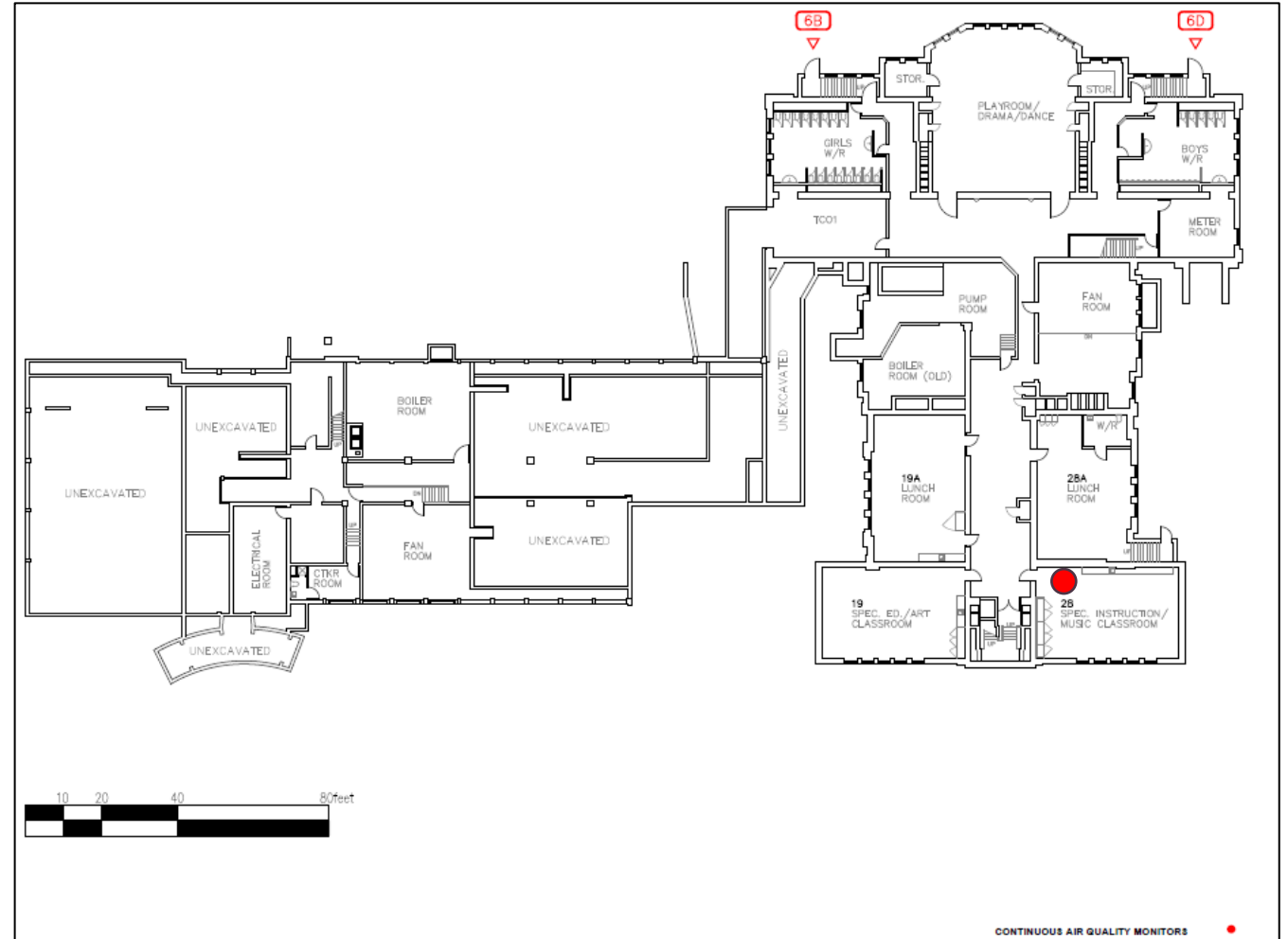
- Three indoor air quality locations
- Monitoring for PM10, TVOCs



ppbRAE 3000+ TVOC Monitor

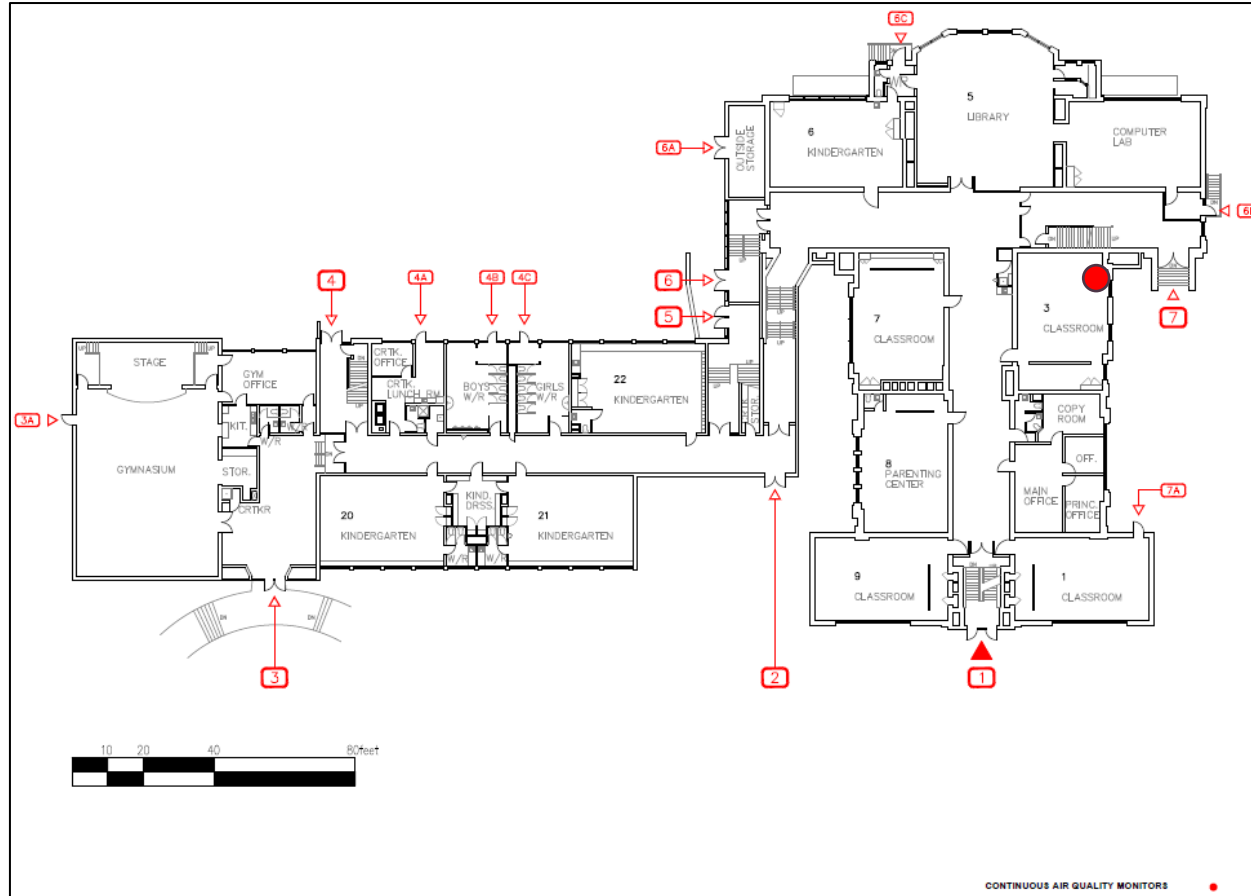


DustTrak DRX PM Monitor



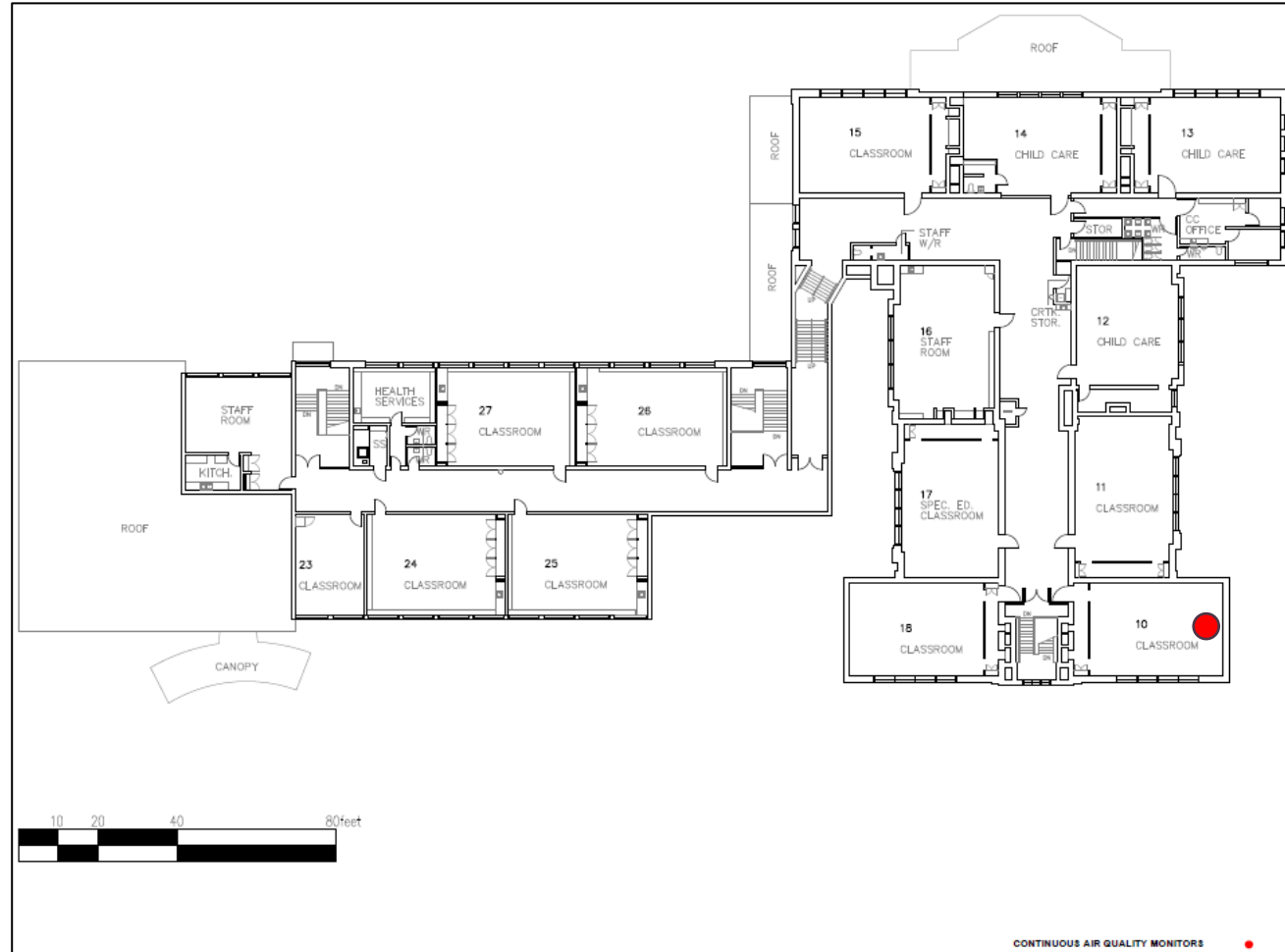
Basement Floor Monitoring Location

Indoor Air Quality Monitoring Locations



First Floor Monitoring Location

Indoor Air Quality Monitoring Locations



Second Floor Monitoring Location