

**Moss Park  
Construction Liaison Committee #3  
Walking Tour**

**November 2, 2022**

# Agenda

- Housekeeping
  - Introductions
  - Land Acknowledgement
  - Safety Moment (on site)
- Project Schedule
- Preconstruction Activities
- Station Construction
- Business Supports
- Next Steps

## Land acknowledgement

Let us take a moment to acknowledge that we are on the traditional territory of Indigenous Peoples including the Anishnabeg, the Haudenosaunee and the Wendat peoples.

We are all Treaty people. Many of us have come here as settlers and immigrants...in this generation or generations past.

Metrolinx declares its commitment to building meaningful relationships with Indigenous Peoples.

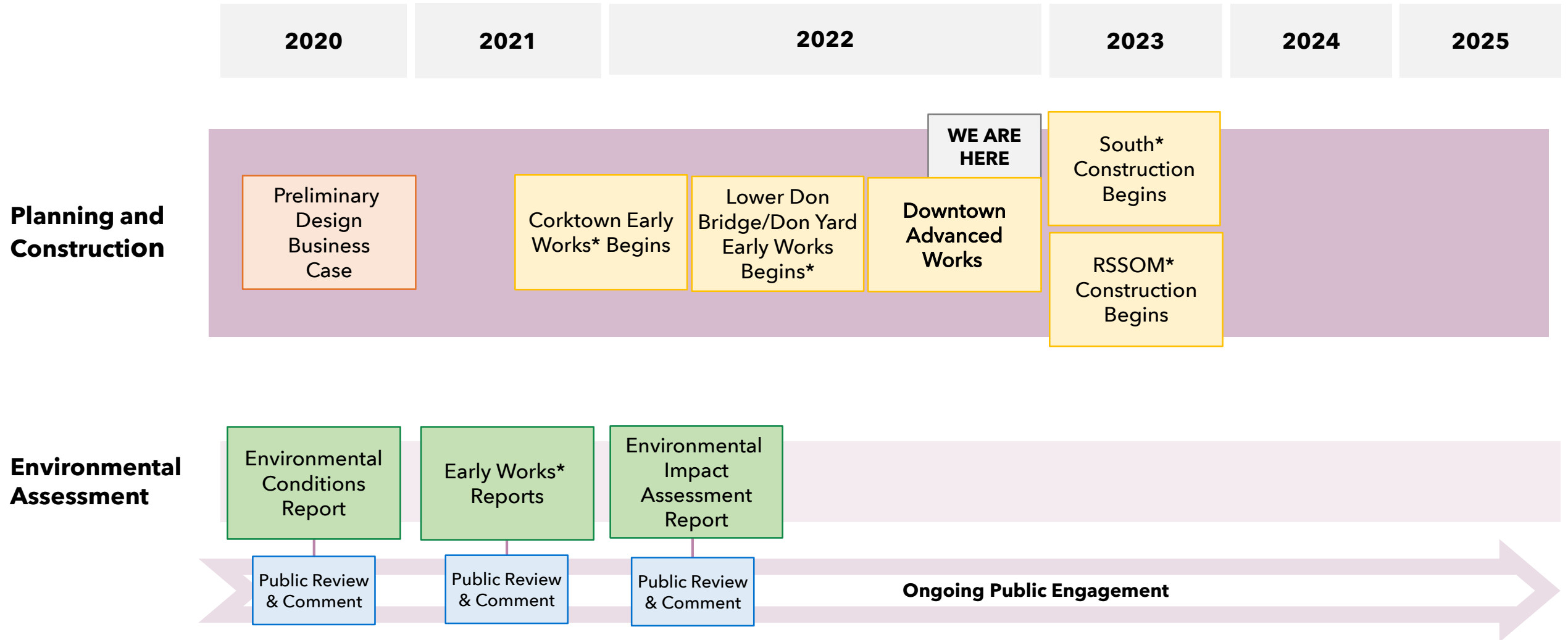
We acknowledge the historic and continued impacts of colonialization and the need to work towards meaningful reconciliation with the original caretakers of this land.

We acknowledge that Metrolinx operates on lands covered by 20 Treaties, and that we have a responsibility to recognize and value the rights of Indigenous Nations and Peoples and conduct business in a manner that is built on the foundation of trust, respect and collaboration.



# Project Schedule - Recap

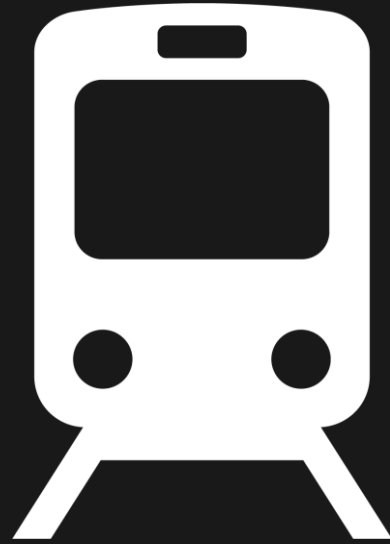
# Project Timeline (Downtown)



**\*Timelines are subject to change**

\*Procurement Packages:

- South - Southern Civil, Stations and Tunnel (Exhibition to Don Yard)
- North - Northern Civil, Stations and Tunnel (East Harbour to Science Centre)
- RSSOM - Rolling Stock, Systems, Operations and Maintenance
- Early Works - Exhibition, Corktown, Lower Don Bridge/Don Yard, East Harbour, Lakeshore East Joint Corridor



# Preconstruction Activities

# Fieldwork

Fieldwork continues in the south end of Moss Park, including:

Activity	Status
Species at Risk (SAR) survey	<b>Completed</b>
Borehole testing to determine groundwater levels	<b>Completed</b>
Environmental Site Assessment to assess soil and groundwater conditions	<b>Completed</b>
Stage 2 Archaeological investigations	<b>Completed</b>
Stage 3 and/or Stage 4 Archaeological Assessments	<b>TBD</b>



Photo: Cleaning archaeological feature in Moss Park. Courtesy of Stantec

## Archaeology Update

- To date, archaeological investigations at Moss Park have included:
  - Test pit survey (2021)
  - Mechanical excavation of four trenches (2022)
- Stantec archaeological teams have uncovered potential 19<sup>th</sup> century structures (a flagstone foundation, a layer of brick rubble, with some painted plaster).





## Tree Donations - Giving Back to the Community

- As noted, 2 trees were removed to facilitate archeological trenching in October 2022
- Metrolinx worked with John Innes Community Centre to donate these trees to their community woodworking program
- The trees were taken offsite to be milled
  - The trees have been provided to the community program for their use

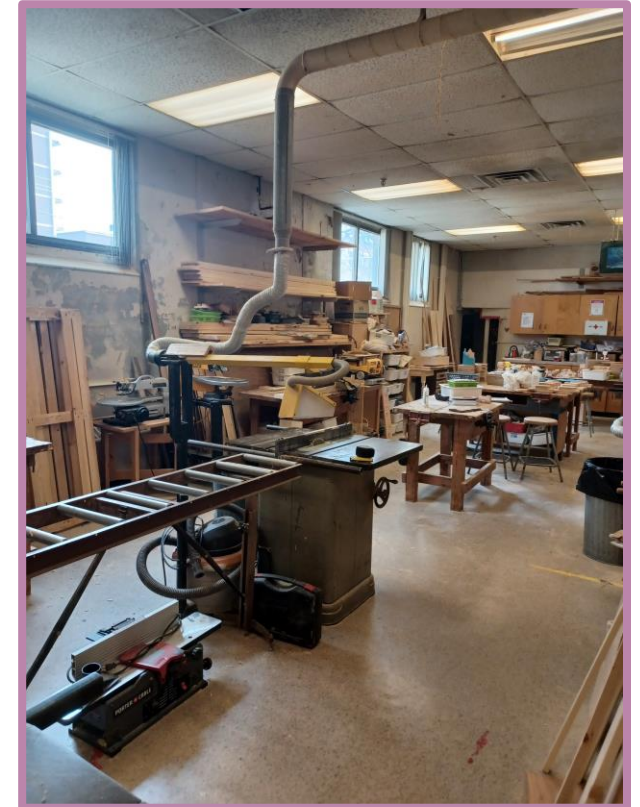
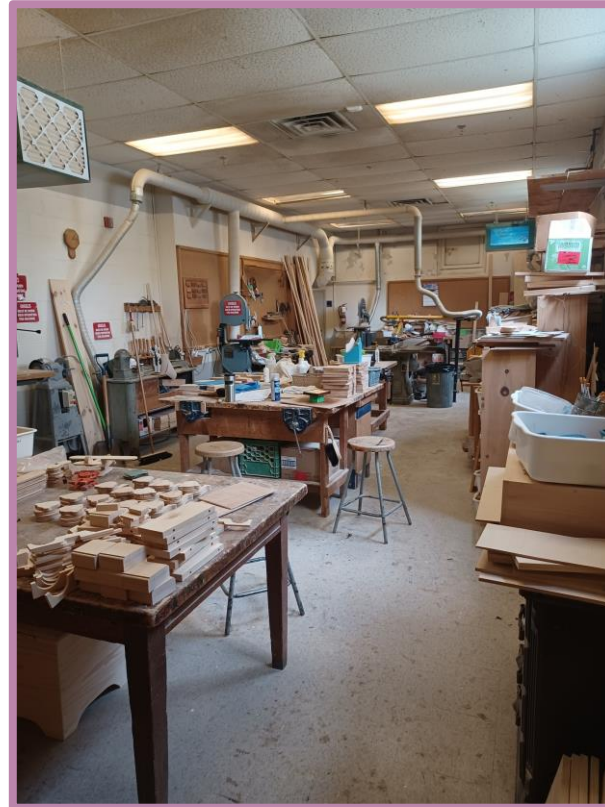
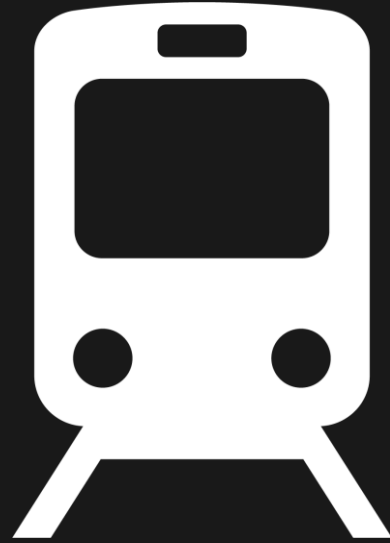


Photo courtesy of John Innes Community Recreation Centre.



# Moss Park Station Construction

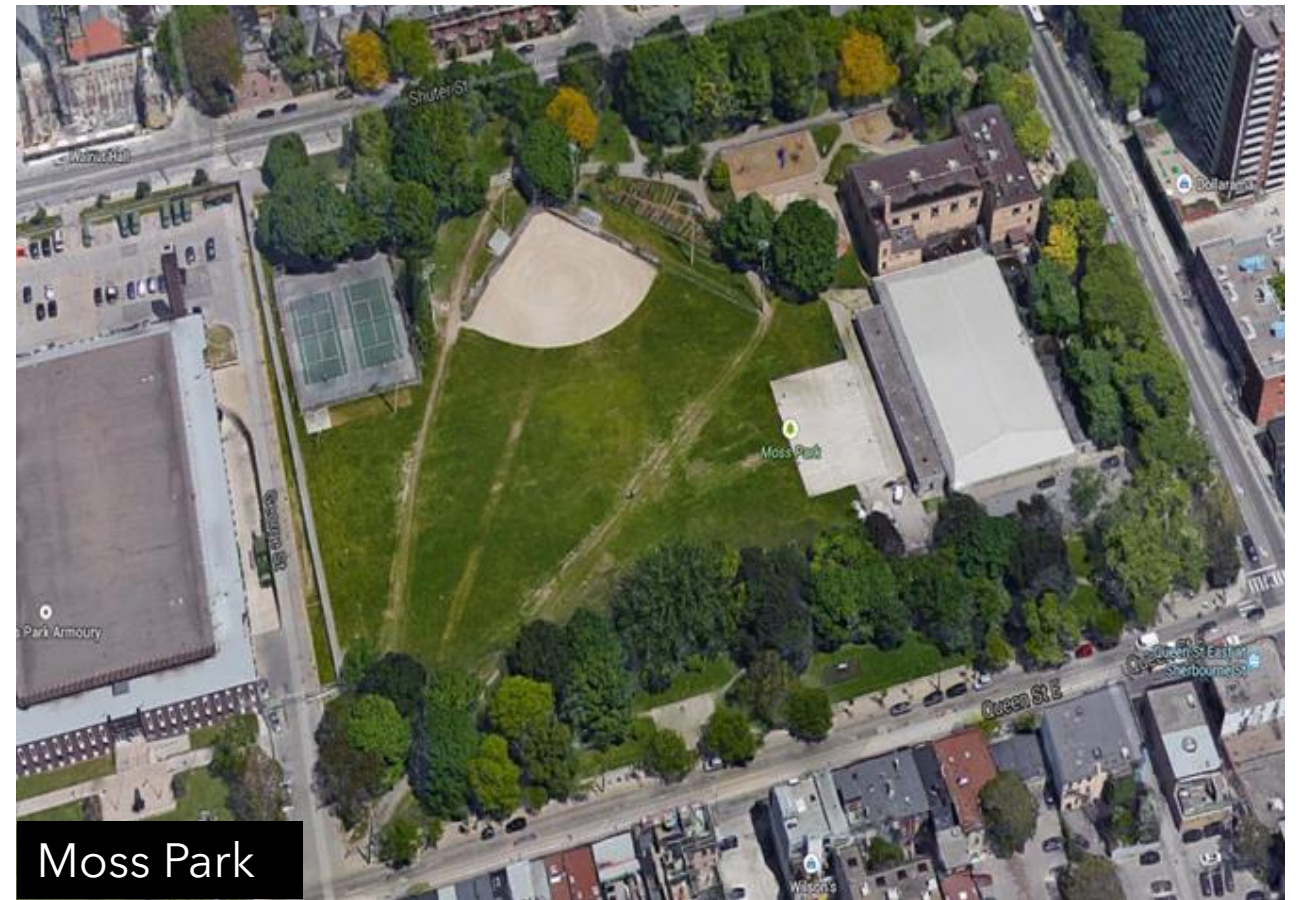
## **Moss Park Station** | Construction Preparatory Activities

- Preferred Proponent for South Civils Construction announced on September 14, 2022
- Final Arborist Report - which will identify number of trees for removal - is expected after the Project Constructor completes their detailed design
- Mobilization, site preparation and tree removals (early 2023)
- Additional survey work to monitor noise and vibration levels (early 2023)
- Parking lot demolition (Spring 2023)
- Do not anticipate major utility work or relocations in the Moss Park area to prepare for South Civils work
- Construction hoarding will be installed by the Project Constructor and there will be opportunity for community input into the final artwork design

\*Dates listed above are subject to change pending final schedule from the Project Constructor

# Moss Park Station Construction - Required Vegetation Removals

- In October 2022, Metrolinx removed two trees to allow archeological investigations to proceed.
  - Trees were donated to John Innes Community Centre woodworking program
- A third tree required pruning and Metrolinx had a certified arborist on-site to monitor and assess any root damage with the goal of retaining the tree for as long as possible.
- In 2023, additional trees will require removal to facilitate the major station works.
- A tree management plan and arborist report will be developed during the detailed design phase.
  - This report will outline the total number of trees requiring removal



A tree management plan and arborist report will be developed during the detailed design phase. Metrolinx is consulting with the City on the tree replacement and compensation strategy for any trees that will be removed.

## Traffic Impacts - Moss Park

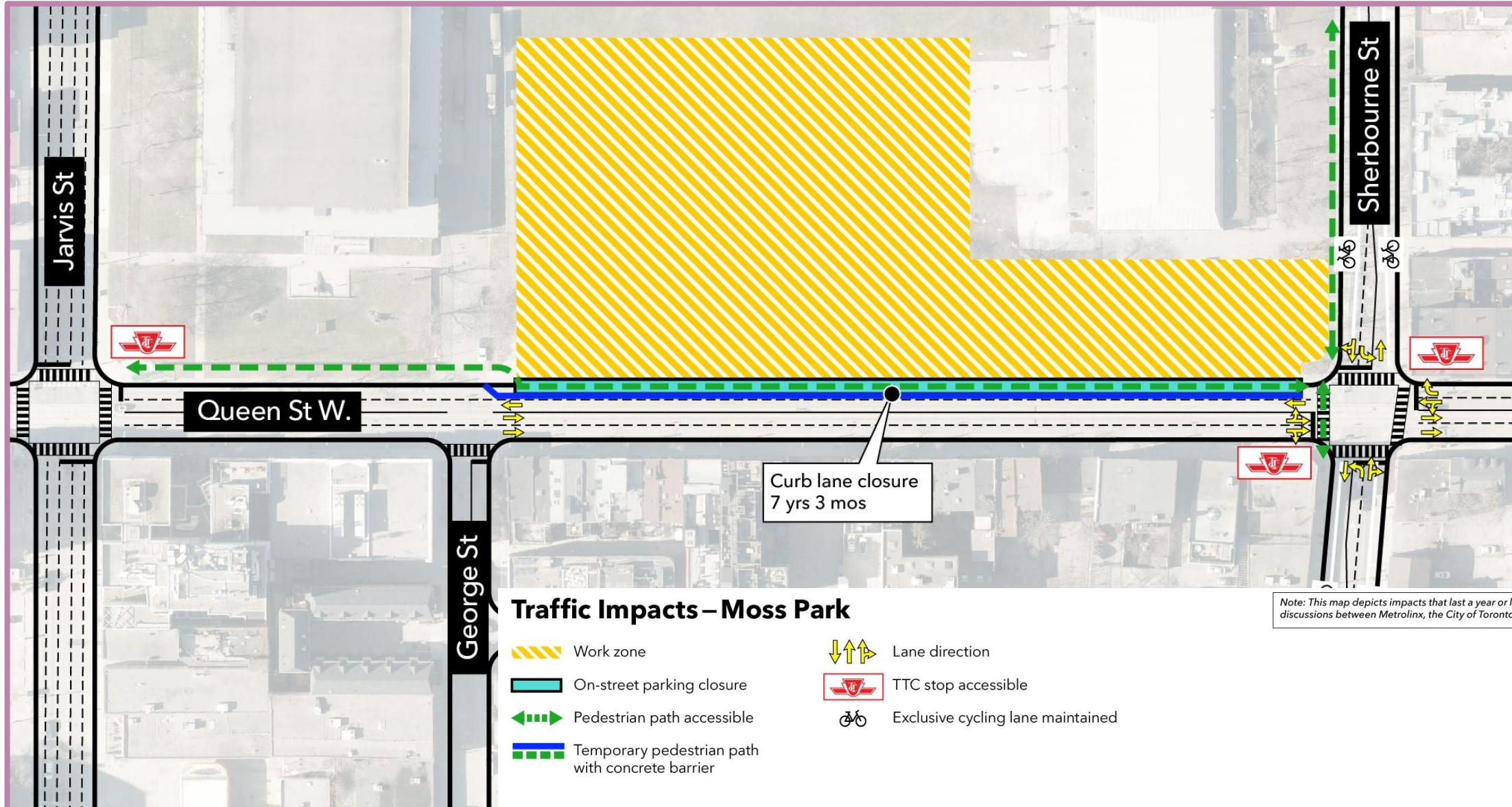
Lane closure of the **westbound curb lane** on Queen Street between George Street and Sherbourne Street (7 years and 3 months) to accommodate construction deliveries and staging.

- Lane closure to start early winter/spring 2023.
- The closure will impact the AM peak traffic and non-AM peak on-street parking that currently utilizes the lane.
- Pedestrian path to be maintained in protected curb lane.
- No impact to TTC stop locations or Sherbourne Street.










Moss Park: Westbound Queen St. East view

# Traffic Impacts - Moss Park



## Traffic Impacts – Moss Park

-  Work zone
-  On-street parking closure
-  Pedestrian path accessible
-  Temporary pedestrian path with concrete barrier
-  Lane direction
-  TTC stop accessible
-  Exclusive cycling lane maintained

*Note: This map depicts impacts that last a year or longer. All impacts are subject to further discussions between Metrolinx, the City of Toronto, the TTC and future project partners.*



**Moss Park Improvements & John  
Innes Community Recreation  
Centre Replacement**

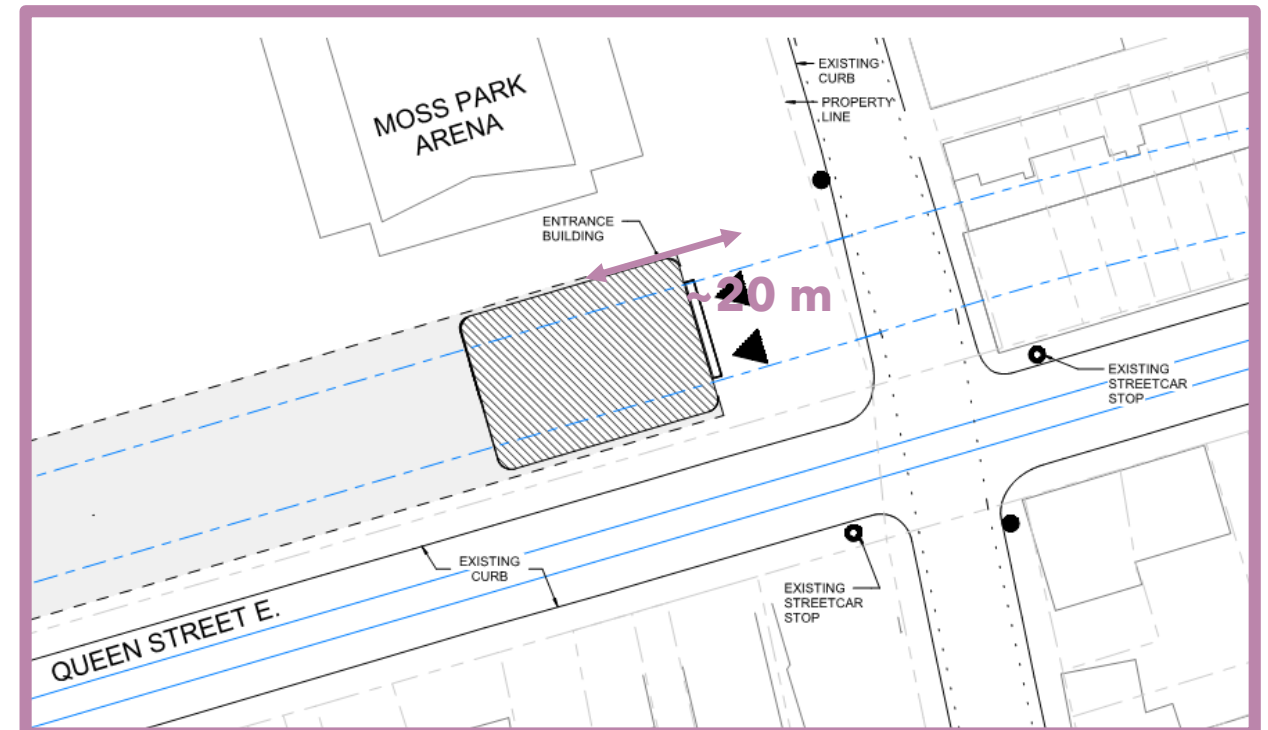
# Coordinating Projects with the City of Toronto

## Moss Park Improvements Project

- Coordinating integration of Moss Park Station design with the Moss Park Improvements & John Innes Community Centre Replacement
- Design and construction timelines optimally aligned for effective collaboration - to reduce the duration and extent of disruption
- Metrolinx has agreed to limit re-instatement of park to soil cover, will hand-over the site to the City for park construction and landscaping

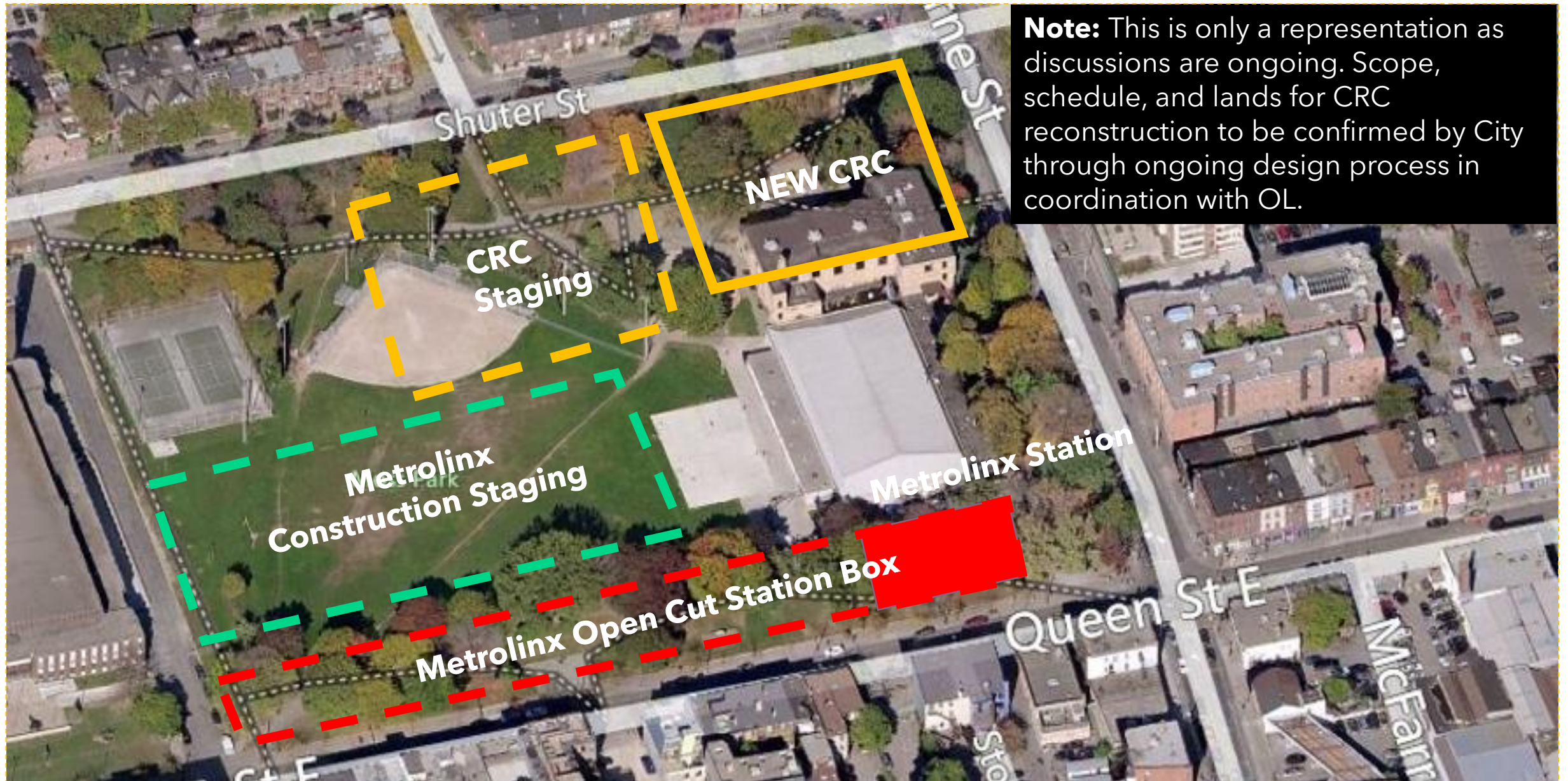
Since June 2020, Metrolinx has been meeting with City staff to address design concerns regarding Moss Park, resulting in Metrolinx:

- Increasing setback of station building from Sherbourne lot line by 20 metres to allow for a plaza space
- Temporary arena parking arrangement
- Re-instatement scope







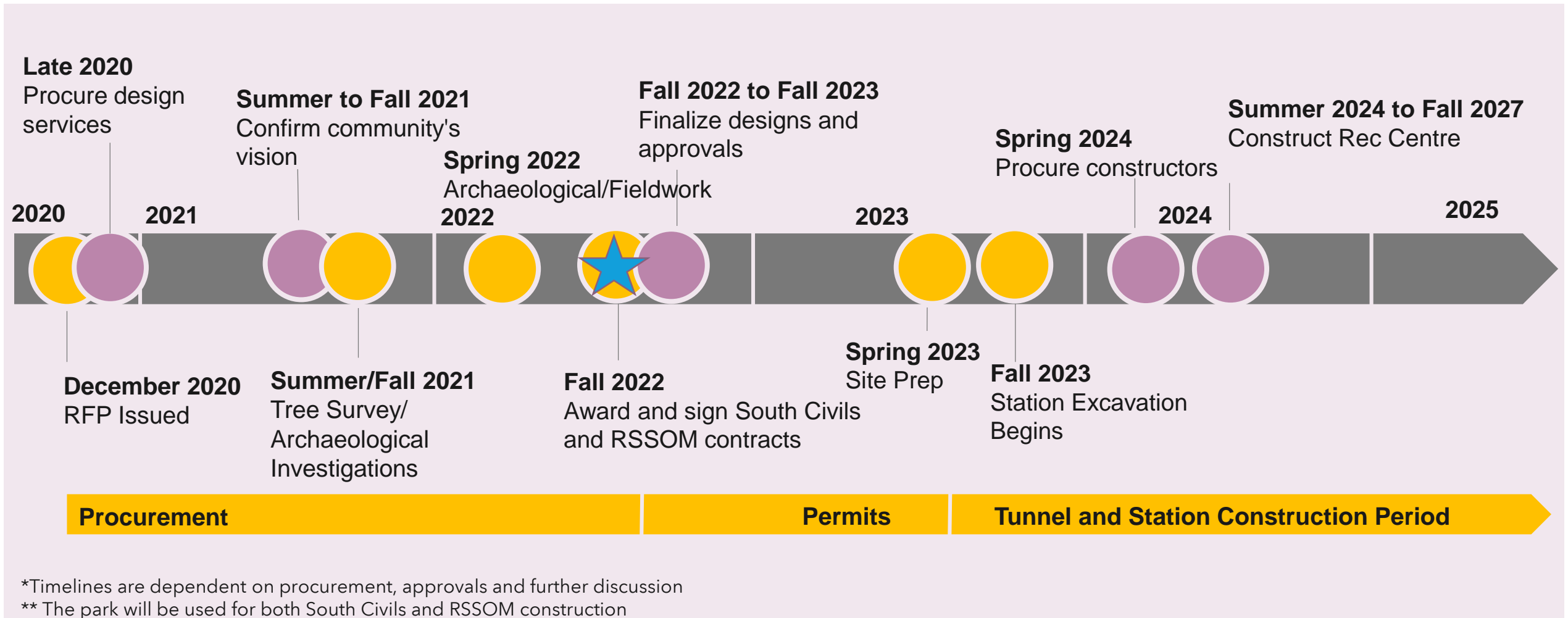
## Moss Park Improvements & John Innes Community Recreation Centre Replacement

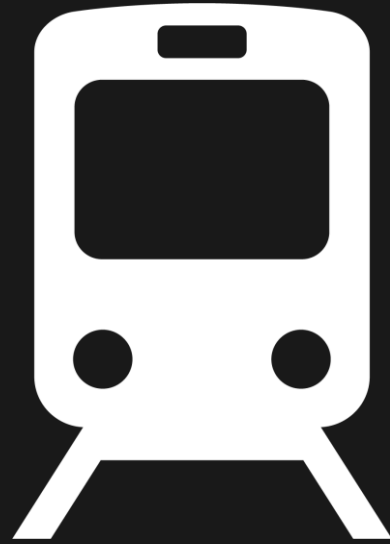


**Note:** This is only a representation as discussions are ongoing. Scope, schedule, and lands for CRC reconstruction to be confirmed by City through ongoing design process in coordination with OL.

# Collaborating with the City to Reduce Impacts

-  Moss Park Improvements Milestones
-  Ontario Line Moss Park Milestones






# Business Supports

## Goals | **Business Supports**

Metrolinx is committed to maintaining business continuity during construction by:

- 
- ❑ Minimizing construction, traffic and property impacts to businesses, residents, pedestrians and all road users
  - ❑ Coordinating cumulative traffic impacts of all projects with Transportation Services, TTC and third parties working in the area
  - ❑ Maintaining open lines of communication via Construction Liaison Committees, Stakeholder Working Groups, etc. to support planning and advanced notice so issues and challenges are addressed promptly
  - ❑ Ensuring the project constructor develops a robust business supports strategy, which includes 'shop local' campaigns, marketing and advertising, signage and way-finding, etc., so that businesses can continue to operate with minimal disruption
  - ❑ Leveraging 'lessons learned' from other transit projects to ensure continuous improvement

# Mitigation | Best Practices



## Effective hoarding and signage placement to facilitate detours

Providing advance notice and alternative route information, as well as effective way-finding.



## Thoughtful site plans to ensure business continuity

Proactive engagement about upcoming construction plans to learn about potential issues and concerns to consider ahead of any work.



## Respond to neighborhood concerns to resolve reasonable complaints in a timely manner

Coordinate with other major projects and events affecting the neighborhood.



## Traffic analysis and modeling to assess impacts and mitigations for all projects in the area

Outlines all anticipated transportation and transit impacts and ensures coordination with City, TTC and other provincial projects.

*\*excludes unplanned emergency work*



## Identify and communicate public or private parking impacts well in advance

Construction workers must comply with all parking bylaws. Any project-related parking impacts, along with potential alternatives, will be communicated well in advance.



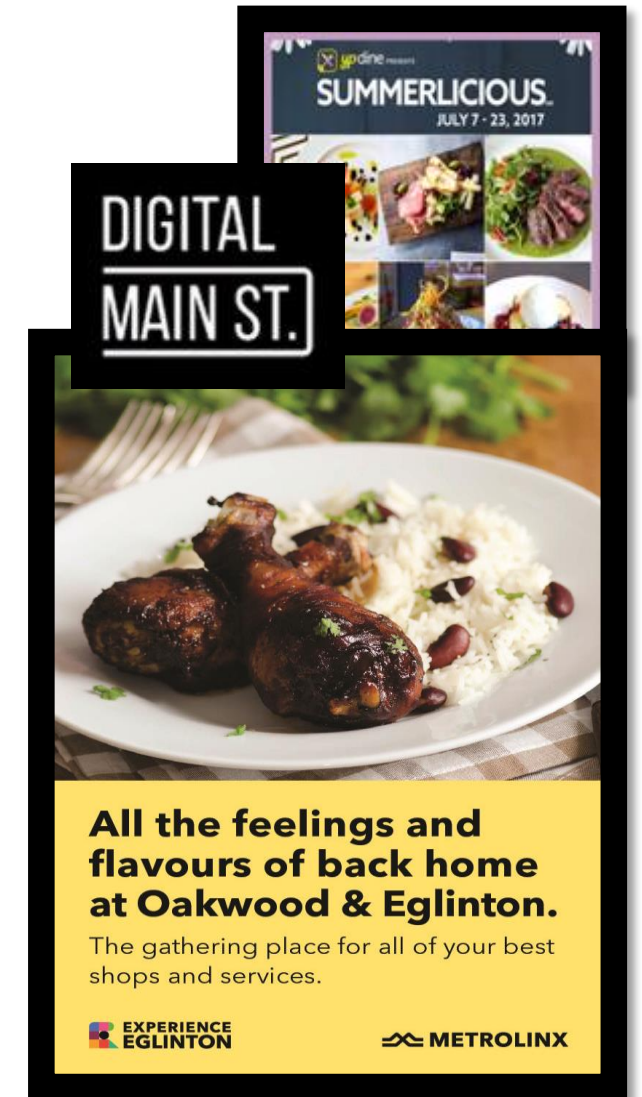
## Surveying businesses so programs can be tailored to meet their needs

Work collaboratively with local businesses to ensure a fulsome understanding of business and customer needs - to help inform construction management plans.

## Business Support | During Construction

More transit brings more local opportunities. Metrolinx builds and fosters relationships with local businesses to minimize and alleviate disruptions.

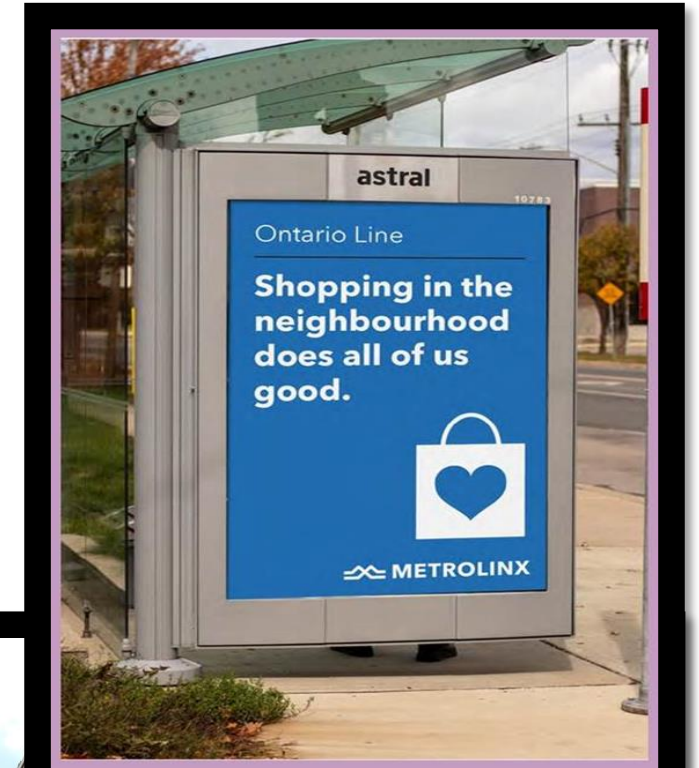
- Develops “shop local” campaigns and business support strategies
- Supports and profiles local businesses to convey that shops and services are open during construction
- Hosts a seminar series to support businesses with the skills and information they need to thrive during construction
- Promotes businesses through digital newsletters, mail drops (flyers/postcards), targeted email blasts, social media posts, townhalls, and community pop-ups
- Establishes Community Liaison Committees (CLC) to engage in discussions about how to improve projects and to provide local businesses, municipal representatives, emergency services, BIAs, residents and other organizations with construction updates
- Staffs a community office to offer on-site support to the community (Queen and Riverside)
- Establishes a 24/7 hotline during construction

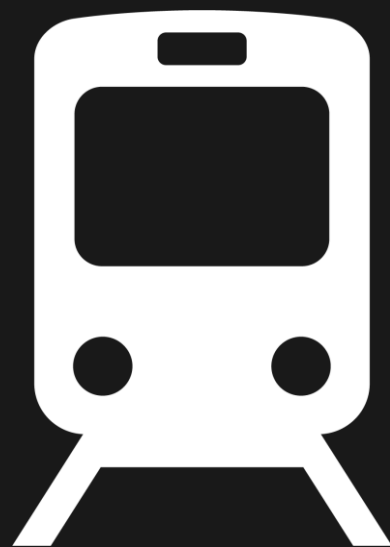


# Business Support | During Construction

## Metrolinx establishes contractual requirements with construction contractors to:

- Develop Construction and Traffic Management Plans that include input from area businesses
- Develop and implement Property Access and Business Continuity Plans prior to construction, in partnership with Metrolinx and BIAs, to outline strategies to further minimize business impacts
- Keep the construction working areas and vicinity clean
- Aim to maintain door access to businesses at all times
- Provide financial incentives to reduce the construction schedule and road closure durations
- Ensure hoarding is clean, well-lit and in a state of good repair
- Ensure appropriate and visible wayfinding signage to indicate the presence of and means of accessing affected businesses
- Encourage investment in local procurement:
  - For example, on the Eglinton Crosstown project, our constructor has invested over \$8M in local procurement support for local businesses on the line
- Host public tradeshow to provide local communities with networking opportunities for local contractors, vendors, jobseekers, community businesses and non-profits.





# Next Steps



## Next Steps

- Pre-construction activities continue in the south end of Moss Park
- Follow up on any action items from the CLC meeting within 2 weeks
- Community pop-up events planned for the remainder of this year and throughout 2023
- Open House planned for November 30, 2022 at 4:00-7:00 p.m. at the John Innes Community Centre
- Next CLC meeting date planned for March 2023
- Regular email updates on construction activities to the CLC, residents and businesses

# Contact Us

Metrolinx will keep the community, residents and businesses informed, providing project updates, seeking input and feedback, and addressing questions and concerns effectively and quickly.

## Here's how:

- Continuing the dialogue via regular CLC update meetings.
- Providing advance construction notices for upcoming work.
- Door knocking (canvassing) local businesses.
- Hosting community pop-ups, in-person and virtual meetings.
- Publishing a weekly Ontario Line e-newsletter.
- Establishing a 24/7 hotline during construction.

## Stay connected:

Visit [Metrolinx.com/OntarioLine](https://metrolinx.com/OntarioLine) and sign up for our Ontario Line weekly e-newsletter.

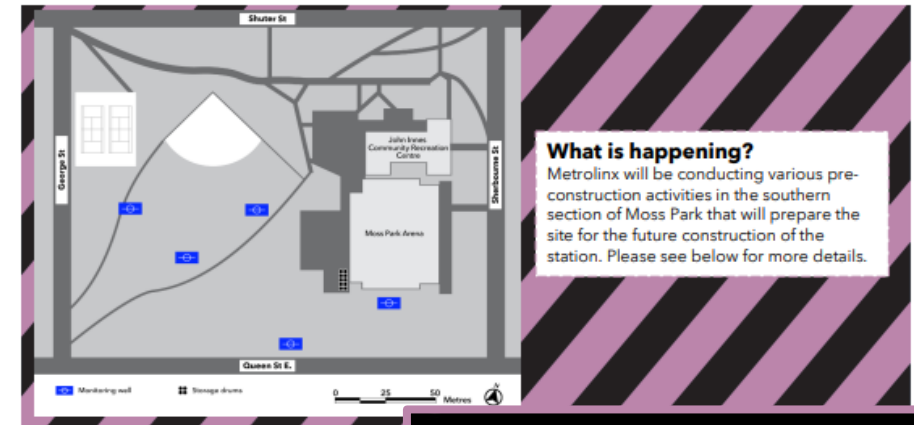
## Questions or comments:

- [OntarioLine@metrolinx.com](mailto:OntarioLine@metrolinx.com)
- 416-202-5100

Follow us: Twitter / Facebook [@OntarioLine](https://twitter.com/OntarioLine)

## Early Works for Southern Section of Moss Park

Starting as early as June 29<sup>th</sup>, 2022



### Timing

- Scheduled start: June 29<sup>th</sup>, 2022
- Scheduled completion: July 8<sup>th</sup>, 2022
- Days: M-F
- Hours: 8:00am-6:00pm.

### What

- Crews v...
- southern
- Environ...
- assess s...
- constru...
- samplin...
- drilling...
- truck fo...
- off with...
- installe...
- Storage...
- safely s...
- comple...
- Please t...
- near co...
- Resider...
- trucks a...
- Work e...
- Work m...
- unfores...

