

ZONE 1 THE PLAZA

Queen and Strange St



OVERHEAD STRUCTURE INTEGRATES WAYFINDING AND ENGAGES WITH NEW TREE CANOPY

OPPORTUNITY FOR COMMUNITY EVENTS AND SEASONAL ACTIVATION

BLUE PAVERS AS ART OPPORTUNITY TO CREATE CONTINUITY WITH OTHER COMMUNITY INITIATIVES

GRASSES AND NATIVE PLANTINGS

WAYFINDING ON CANOPY & GATHERING AREAS WITH PATIO SEATING BELOW



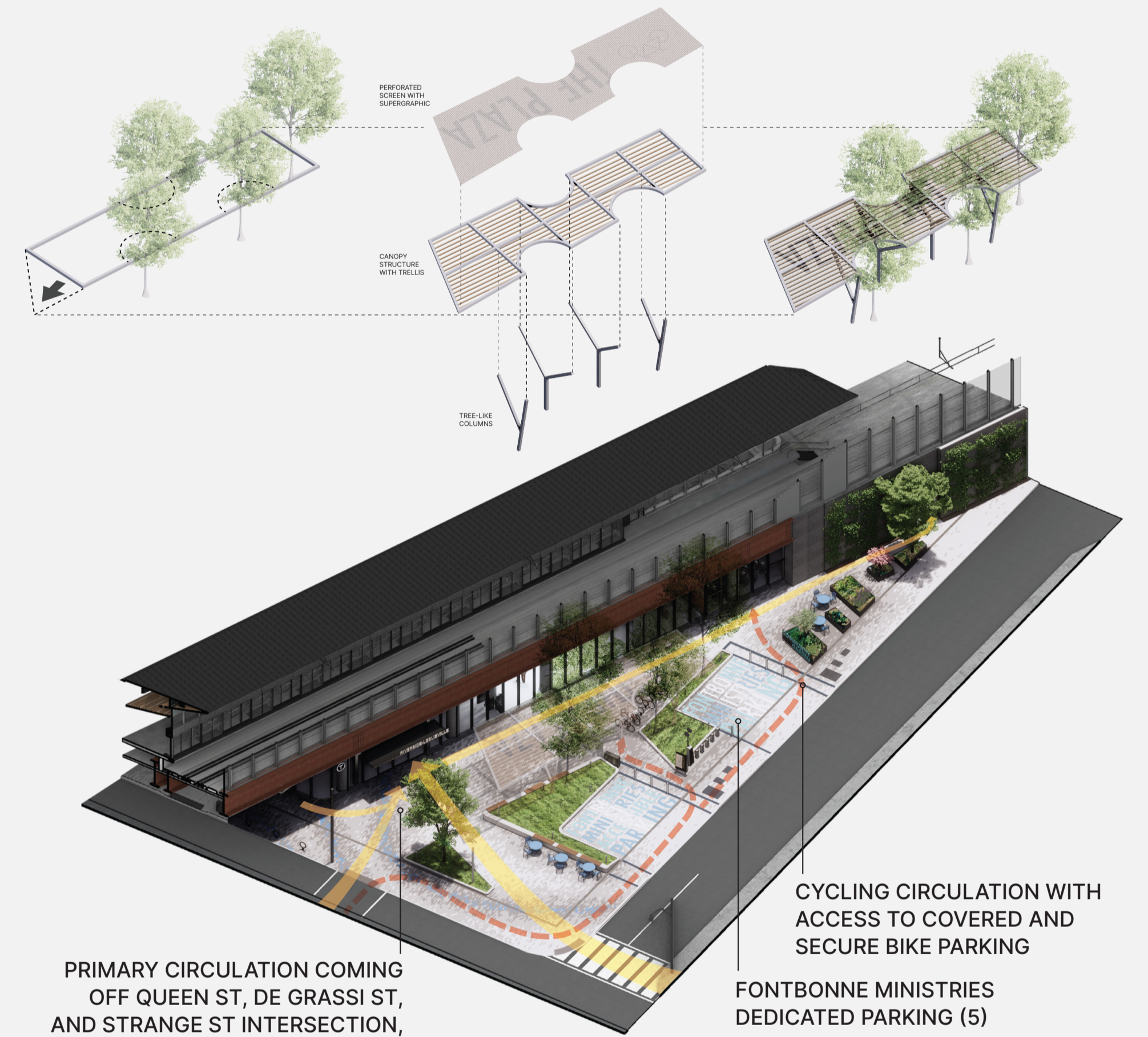
COMMUNITY GARDEN PLANTERS

LIGHT FIXTURES IN UNDERPASS

The Plaza acts as a threshold between the vibrant streetscape of Queen Street and the Riverside-Leslieville station. It offers the ideal opportunity to gather and engage the neighbourhood, its community, visitors and transit users alike.

The configuration of the plaza allows for intuitive and safe circulation, aligning with the station access points while providing shaded seating and programmable space under the overhead structure. This is a key element to **activate** the potential of the site for a variety of year-round uses while providing a visual **transition** between the neighbourhood and the station. The unique approach to the design of the overhead structure allows for extensive tree planting in the plaza, while the vines and groundcover species provide seasonal interest and ecological diversity.

Blue paving tiles and supergraphics offer exciting opportunities for **wayfinding**, community art, and continuity of existing elements within the neighbourhood and the rest of the Ontario Line.



PRIMARY CIRCULATION COMING OFF QUEEN ST, DE GRASSI ST, AND STRANGE ST INTERSECTION, AND ALONG STATION WALL

CYCLING CIRCULATION WITH ACCESS TO COVERED AND SECURE BIKE PARKING
FONTBONNE MINISTRIES DEDICATED PARKING (5)
ZONE 1 PLAZA CIRCULATION



OVERHEAD STRUCTURE EXTENDS TO CREATE GATEWAY OPPORTUNITY WHILE MAINTAINING CLEAR VIEWS OF STATION SIGNAGE

COMMUNITY GARDEN PLOTS AS AN OPPORTUNITY TO ACTIVATE THE CORNER

PATIO SEATING CATERS TO RESTAURANTS AND CAFES ACROSS THE STREET AND PROVIDES GATHERING SPACES FOR ALL USERS