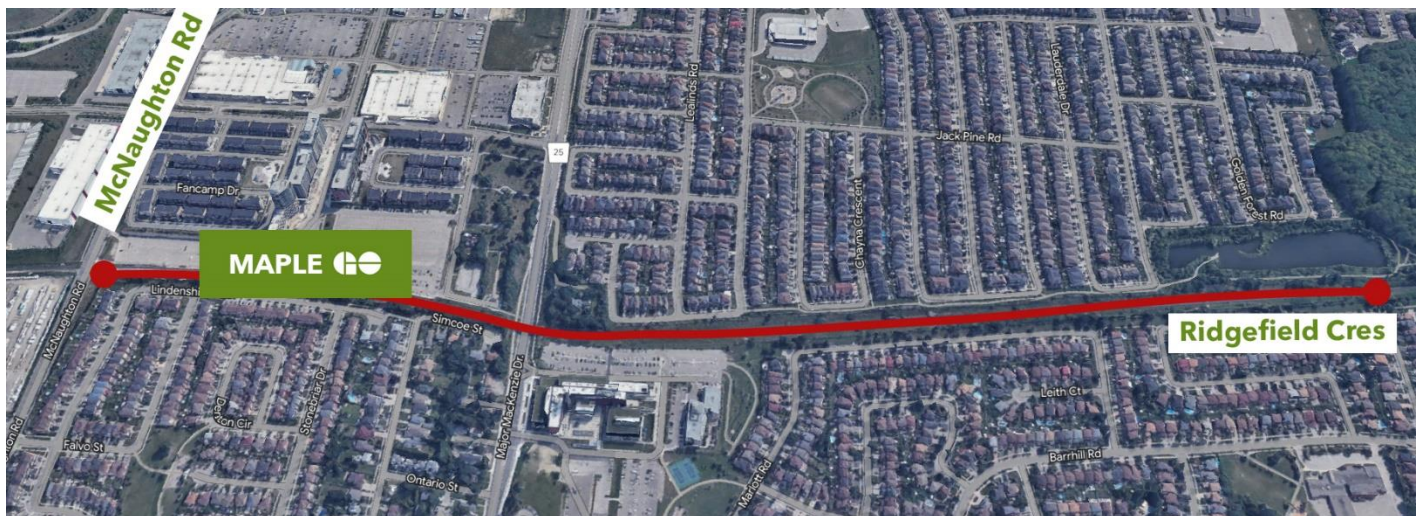


# Maple GO: Weekend Closure Overnight Work

Friday, June 16<sup>th</sup> to Monday, June 19<sup>th</sup>



## The local project

Metrolinx is continuing to make progress on Maple GO Station improvements!

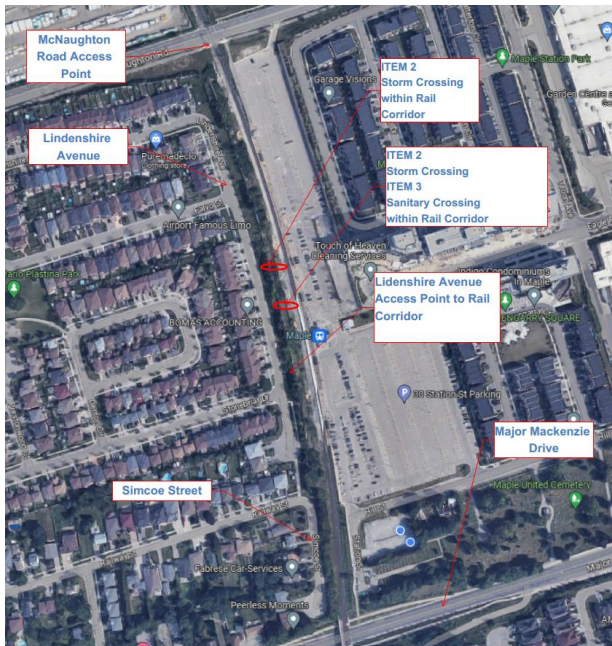
During an upcoming weekend closure of the Barrie Line (June 17-18, 2023), we will be working on important rail corridor upgrades between Newmarket GO and Union Station. Around Maple GO, our contractor Kenaidan Contracting Ltd. will be working on rail corridor infrastructure improvements from Ridgefield Crescent to McNaughton Road.

## What is happening?

We will be upgrading our rail corridor infrastructure to support a new west platform and track at Maple GO, both of which will be operational in the future. This work needs to be completed during a weekend closure to ensure regular service during the week.

Work will begin at 9:00 p.m. on Friday, June 16<sup>th</sup>, 2023 and it will be completed by 5:00 a.m. on Monday, June 19<sup>th</sup>, 2023. Please be advised that crews will continue to work overnight.

Across from Simcoe Street and Lindenshire Avenue, we will be removing the tracks to install sanitary and storm connections before putting them back in place. Near Ridgefield Crescent, we will be installing a new railway switch.



### What does this mean for you?

Residents located behind the new sound barrier will not see and should not hear much of the work taking place. However, you may notice construction machinery and equipment near access points to the rail corridor off McNaughton Road, Simcoe Street and Ridgefield Crescent. Dump trucks will also be moving material out of the corridor.

Residents along sections with no barrier (due to construction sequencing) may experience some noise and light coming from the rail corridor. Light towers will be in place to provide lighting for the safety of the workers. However, construction equipment will be outfitted with silencers to mitigate noise. Thank you for your patience as we continue to make important upgrades to Maple GO Station. This work supports future two-way, all-day GO Train service on the Barrie Line.

### Questions

If you have any questions or concerns about this work, please contact us any time at [YorkRegion@metrolinx.com](mailto:YorkRegion@metrolinx.com). Residents with urgent concerns may also reach out to the Kenaidan Site Team: **Benjamin Alves, Senior Project Manager, 416-528-4573** | **Michel Limoges, Senior Site Supervisor, 647-549-1593** | **Jeff Bedard, Site Supervisor, 416-574-1452**

As with all construction, work may be adjusted, rescheduled or extended due to weather conditions or unforeseen circumstances.

Cet avis de travaux de construction est disponible en français sur demande.  
Si vous êtes intéressé, veuillez envoyer un courriel à [YorkRegion@metrolinx.com](mailto:YorkRegion@metrolinx.com).

#### Contact Us:

Write to us at: [YorkRegion@metrolinx.com](mailto:YorkRegion@metrolinx.com)

Find us on Twitter [@Metrolinx](https://twitter.com/Metrolinx)

Visit the website: <https://www.metrolinx.com/en/greaterregion/projects/maple-go.aspx>