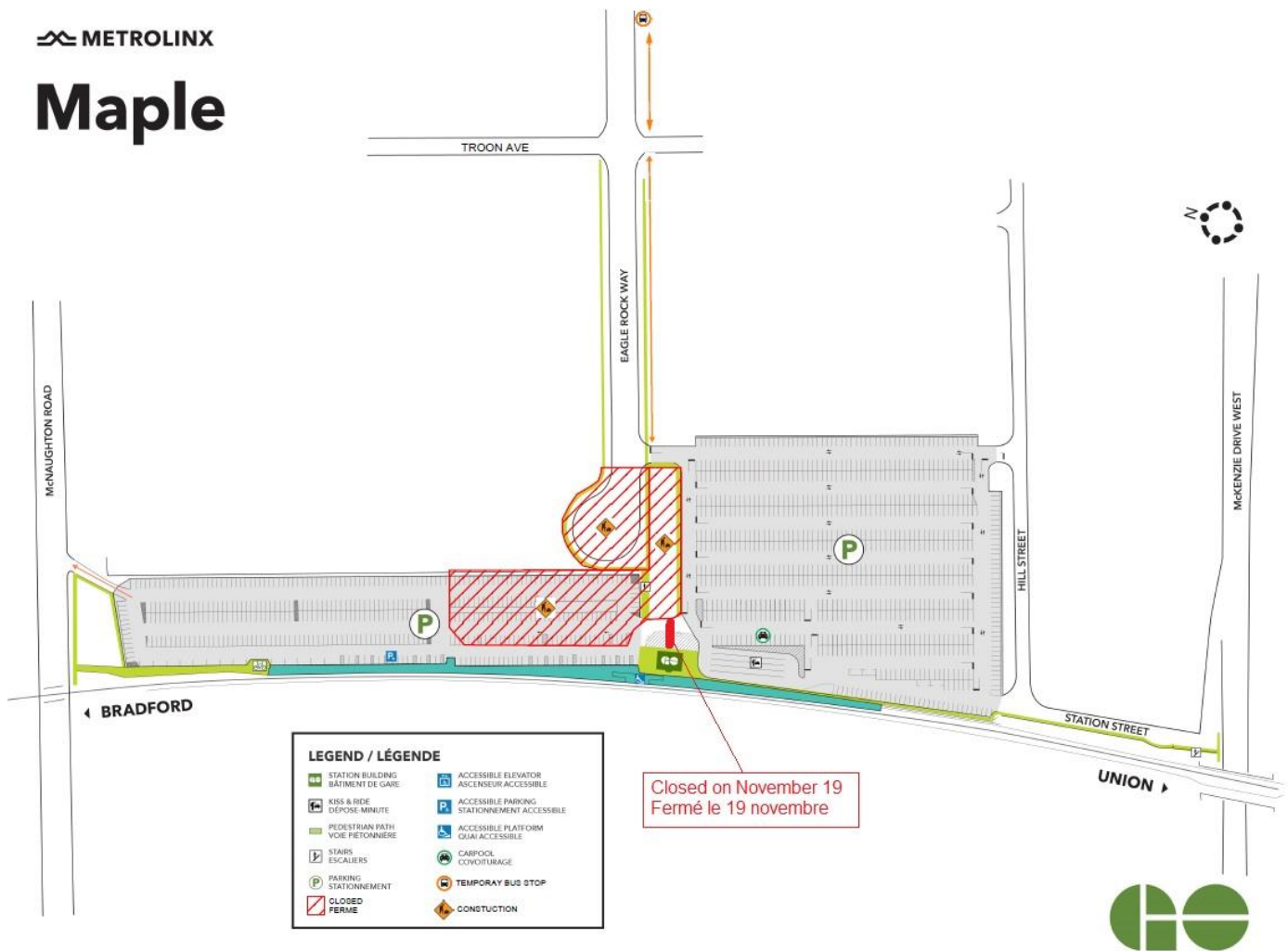


# Maple GO: Bus Loop Closure & Parking Lot Work

Bus Loop Closure: November 14 to Mid-December, 2022

Parking Lot Work: November 19, 2022



## Maple GO Upgrades

- A renovated east platform.
- A new and upgraded west side platform.
- A north and south tunnel (including elevators) to connect to the west platform.
- Expanded bus loop on Eagle Rock Way and a north tunnel connection to the bus loop.
- Upgraded Passenger Pick-up, Drop-off zone.
- A new pedestrian bridge over Major MacKenzie Drive.
- Noise wall along the west side of the corridor from Rutherford Road to McNaughton Side Road.
- New retaining walls, pathways, and landscaping around the bridge.

## What is happening?

Metrolinx is working on improvements at Maple GO Station to deliver enhanced future service. Upcoming work is required to deliver the expanded bus loop on Eagle Rock Way. This will result in some changes to how customers use the station.

## What does this mean for you?

From November 14<sup>th</sup> until mid-December, customers will access buses at Maple GO from a new temporary location. The temporary bus stop will be located approximately 300 metres east of the station on Eagle Rock Way, by the Walmart entrance. There will be pedestrian paths to safely travel between the station and the temporary bus stop, and temporary wayfinding signage will be put up as well.

On November 19<sup>th</sup> only, the drive aisle adjacent to the station building will be closed due to maintenance and utility work. As a result, there will be no vehicular access between the north and south parking lots. Customers will only be able to exit the north parking lot via McNaughton Road.

## Questions

If you have any questions or concerns about this work, please contact us any time at [YorkRegion@metrolinx.com](mailto:YorkRegion@metrolinx.com).

For more information on GO Expansion in your community, visit our website at [www.metrolinx.com](http://www.metrolinx.com).

As with all construction, work may be adjusted, rescheduled or extended due to weather conditions or unforeseen circumstances.

Cet avis de travaux de construction est disponible en français sur demande.  
Si vous êtes intéressé, veuillez envoyer un courriel à [YorkRegion@metrolinx.com](mailto:YorkRegion@metrolinx.com).

### Contact Us:

Write to us at: [YorkRegion@metrolinx.com](mailto:YorkRegion@metrolinx.com)

Find us on Twitter [@Metrolinx](https://twitter.com/Metrolinx)

Visit the website: <https://www.metrolinx.com/en/greaterregion/projects/maple-go.aspx>