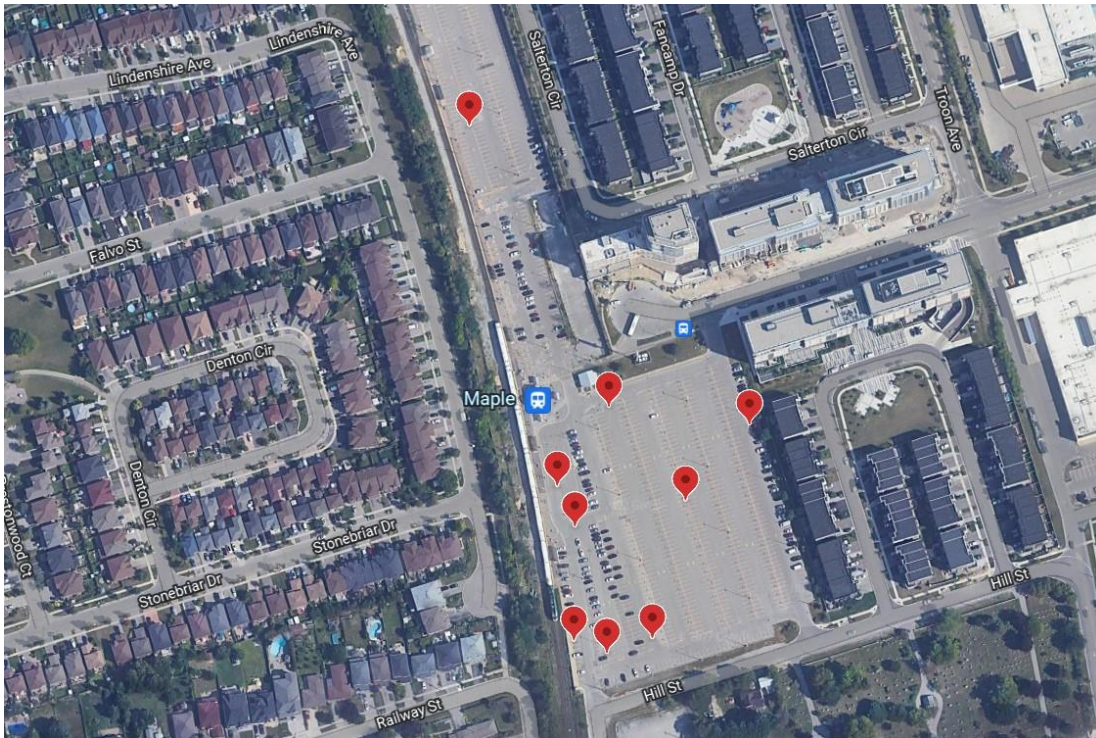


Maple GO: Overnight Borehole Drilling

Starting on October 17 – October 21, 2022



Maple GO Upgrades

- A renovated east platform.
- A new and upgraded west side platform.
- A north and south tunnel (including elevators) to connect to the west platform.
- Expanded bus loop on Eagle Rock Way and a north tunnel connection to the bus loop.
- Upgraded Passenger Pick-up, Drop-off zone.
- A new pedestrian bridge over Major MacKenzie Drive.
- Noise wall along the west side of the corridor from Rutherford Road to McNaughton Side Road.
- New retaining walls, pathways, and landscaping around the bridge.

What is happening?

In preparation for upcoming work on the east side of the rail corridor, construction crews will need to drill boreholes and install monitoring wells at several locations throughout the Maple GO parking lot.

To mark the area and block off public access, safety cones will be placed at each location before the drilling begins. Once drilling is complete, the boreholes will be filled in or covered, and the surrounding area will be cleaned up.

What does this mean for you?

Residents can expect to hear some noise from the drilling, but it should be minimal.

We apologize for the inconvenience and will be doing all that we can to minimize the impacts.

What is the timing and duration?

This work will take place on weekdays from 11:30 p.m. to 5:00 a.m.

Questions

If you have any questions or concerns about this work, please contact us any time at YorkRegion@metrolinx.com.

For more information on GO Expansion in your community, visit our website at www.metrolinx.com.

As with all construction, work may be adjusted, rescheduled or extended due to weather conditions or unforeseen circumstances.

Cet avis de travaux de construction est disponible en français sur demande.

Si vous êtes intéressé, veuillez envoyer un courriel à YorkRegion@metrolinx.com.

Contact Us:

Write to us at: YorkRegion@metrolinx.com

Find us on Twitter [@Metrolinx](https://twitter.com/Metrolinx)

Visit the website: <https://www.metrolinx.com/en/greaterregion/projects/maple-go.aspx>