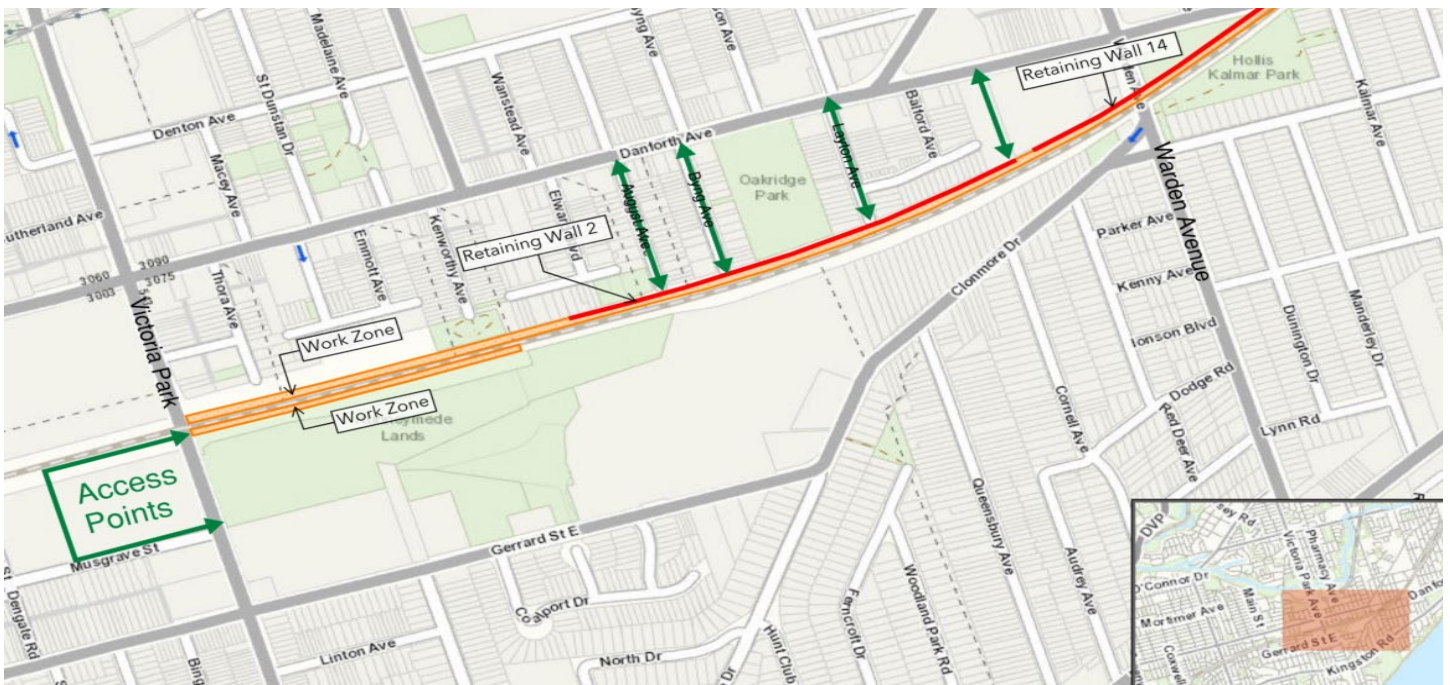


Lakeshore East Rail Corridor: Ongoing Work

July 2023 to Summer 2024



What is happening?

Construction activities are taking place to support future GO Rail transit services. The future service requires the addition of a fourth railway track and electrification infrastructure for the Lakeshore East Line.

Lakeshore East Rail Corridor, Ongoing and Upcoming Work

Crews have mobilized to the area between Warden Avenue and Victoria Park Avenue to perform work along the north and south sides of the Lakeshore East rail corridor. This work includes the installation of sediment control measures and a tree protection fence. This will be followed by the removal of vegetation, earthworks, grading, the installation of retaining walls and an electrical raceway, and restoration activities.

A summary of all other construction activities in the area, along with the anticipated durations for each, has been included herein this notice.

Construction Activities	Tentative Start Date	Expected Duration	Hours of Work	What to Expect
Ground improvements	Mid-July 2023	Approx. 6 months	Day and Night Shift	Ground improvements for the retaining wall installation and construction of an access road. Equipment for this work includes a dozer, excavator, dump trucks, a drill rig, concrete trucks, and compaction equipment.
Retaining Wall 2	As early as January 2024	Approx. 11 months	Day and Night Shift	The retaining wall from Warden Avenue to Kenworthy Avenue is made of pre-cast concrete units and will be backfilled with earth to the ground elevation. Equipment for this work includes an excavator, a boom truck, delivery trucks, and compaction equipment.
Retaining Wall 14	As early as May 2024	Approx. 3 Months	Day and Night Shift	This retaining wall from Warden Avenue to Belford Avenue is made up of pre-cast concrete units and will be backfilled with earth. Equipment for this work includes an excavator, dump truck, and concrete trucks.
Ground restoration	As early as April 2024	Approx. 2 months	Day and Night Shift	Restoration of disturbed areas with topsoil, hydroseeding, final grading, and tie-in works. Equipment for this work includes mini excavators, dump trucks, and water trucks.
Electrical Raceway Installation	As early as August 2025	Approx. 5 months	Day and Night Shift	Installation of an underground electrical conduit for the future track electrification. Equipment for this work includes an excavator and packers.

What does this mean for you?

Increased construction vehicles and equipment can be expected in the work area, accompanied by noise, dust, and site lighting.

Reasonable precautions will minimize the effects on the local community. This includes constructing the retaining wall segments offsite to minimize noise and time spent in the rail corridor. We will also restrict the idling of non-essential equipment to reduce noise, limit reverse operations and the use of white-noise backup alarms where possible, and point lights away from residential windows. Noise and vibration monitoring will also be set up to ensure that noise levels are within exposure limits.

The corridor will be accessed through the access roads shown in green on the map and there will be no staging activities on the access roads. Residents can expect minimal traffic impacts. Pedestrians are not expected to be affected by this work.

As with all construction, work may be adjusted, rescheduled or extended due to weather conditions or unforeseen circumstances.

Cet avis de travaux de construction est disponible en français sur demande.

Si vous êtes intéressé, veuillez envoyer un courriel à TorontoEast@metrolinx.com.

Contact Us:

Write to us at: TorontoEast@metrolinx.com

Find us on Twitter [@Metrolinx](https://twitter.com/Metrolinx)

Visit the website: <https://www.metrolinx.com/en/projects-and-programs/lakeshore-east-line-go-expansion>

Scan the QR code to the right to get Lakeshore East Line GO Expansion updates to your device via Twitter!



Hours of Work:

The work listed above will include a combination of day and night shift, and weekend work may be required periodically. Day shift work will occur between the hours of 7:00 a.m. and 7:00 p.m. five (5) days per week (Monday to Friday) and night shift work, where required, will occur between the hours of 7:00 p.m. and 7:00 a.m. five (5) days per week (Sunday to Thursday). Please exercise caution around active construction sites. We apologize for the inconvenience.

Questions

If you have any questions or concerns about this work, please contact us any time at TorontoEast@metrolinx.com. For more information on GO Expansion in your community, visit our website at www.metrolinx.com.

As with all construction, work may be adjusted, rescheduled or extended due to weather conditions or unforeseen circumstances.

Cet avis de travaux de construction est disponible en français sur demande.

Si vous êtes intéressé, veuillez envoyer un courriel à TorontoEast@metrolinx.com.

Contact Us:

Write to us at: TorontoEast@metrolinx.com

Find us on Twitter [@Metrolinx](https://twitter.com/Metrolinx)

Visit the website: <https://www.metrolinx.com/en/projects-and-programs/lakeshore-east-line-go-expansion>

Scan the QR code to the right to get Lakeshore East Line GO Expansion updates to your device via Twitter!

