

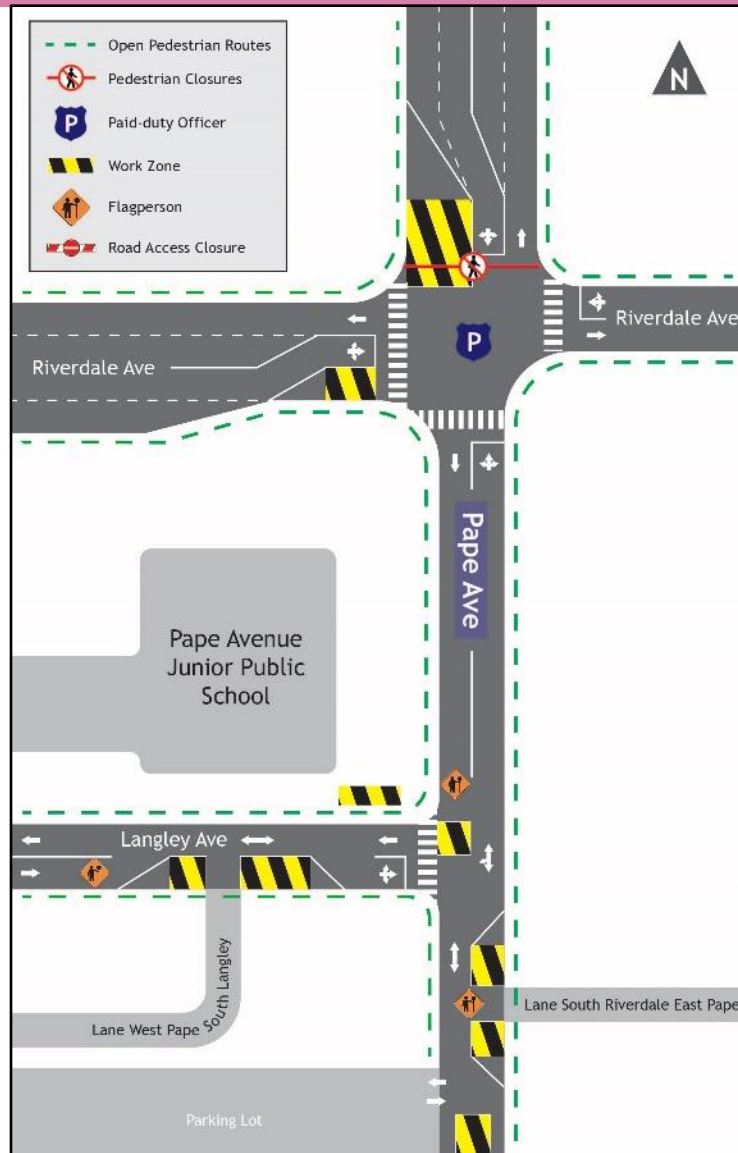
# Investigative Work at Pape Ave, Langley Ave, and Riverdale Ave

**Expected start date:** As early as August 30<sup>th</sup>, 2023

**Expected completion date:** August 31<sup>st</sup>, 2023

**Hours of work:** Approximately 9:00 a.m. to 4:00 p.m.

**Map of work area:**



## What is happening?

- On Wednesday, August 30, 2023, investigative work will take place to verify ground conditions and locations of existing utilities to prepare for Ontario Line construction.
- The test pits are being conducted for the installation of a long-term noise wall and future sewer diversion work.
- Construction equipment including a hydro-vacuum truck, saws, and hand-held devices will be required to complete this work.
- Crews must use non-mechanical excavation methods (hydro-vacuuming) when working within 2 meters of buried utilities to ensure public and worker safety and protect the utilities from damage.
- This work will take place between 9 a.m. – 4 p.m. for one to two days.

## What to expect

- Residents and businesses near the work site can expect to hear some noise from the equipment listed above.
- Short-term traffic lane and sidewalk closures will be required to safely complete this work.
- One lane of traffic will be maintained throughout the work. A Paid Duty Office and/or traffic control personnel will be present while this work takes place.
- Work crews will make test pits and conduct utility investigations to evaluate ground conditions and determine the position of subsurface utilities.
- To identify locates, there will be some paint markings and staking.
- Crews will make every effort to mitigate dust impact by adding water when performing saw cuts.
- Traffic barrels, fencing, and barricades will be set up to provide barriers between pedestrians, cyclists, and traffic.
- Work may be delayed or rescheduled due to weather conditions or unforeseen circumstances.

## About the project

- The Ontario Line will be a 15.6-kilometre subway line that will make it faster and easier to travel within Toronto and beyond.
- The line will bring 15 new stations to the city and will run from Exhibition Place, through the heart of downtown, all the way to the Ontario Science Centre. It will give people more time back in their days, with a trip from one end to the other taking less than 30 minutes compared to the 70 minutes it takes on transit today. There will also be significant relief from crowding throughout the existing transit network thanks to connections to more than 40 other travel options along the way, including the TTC's Line 1 and Line 2, three GO Transit rail lines, and the Eglinton Crosstown LRT.

### Contact us:

Call us 24/7 at: [416-202-5100](tel:416-202-5100)

Write to us at: [ontarioline@metrolinx.com](mailto:ontarioline@metrolinx.com)

Find us on Twitter, Facebook, and Instagram: [@ontarioline](https://www.instagram.com/ontarioline)

Visit the website: [www.metrolinx.com/ontarioline](http://www.metrolinx.com/ontarioline)

### Visit our community office:

770 Queen Street East (near Queen & Broadview)

General hours:

- Mondays, Tuesdays, and Fridays: 9:00 a.m. to 5:00 p.m.
- Wednesdays and Thursdays: 10:00 a.m. to 6:00 p.m.

**Contact us:**

Call us 24/7 at: [416-202-5100](tel:416-202-5100)

Write to us at: [ontarioline@metrolinx.com](mailto:ontarioline@metrolinx.com)

Find us on Twitter, Facebook, and Instagram: [@ontarioline](#)

Visit the website: [www.metrolinx.com/ontarioline](http://www.metrolinx.com/ontarioline)

**Visit our community office:**

770 Queen Street East (near Queen & Broadview)

General hours:

- Mondays, Tuesdays, and Fridays: 9:00 a.m. to 5:00 p.m.
- Wednesdays and Thursdays: 10:00 a.m. to 6:00 p.m.

Disponible en français sur demande. Si vous êtes intéressé, veuillez envoyer un courriel à [ontarioline@metrolinx.com](mailto:ontarioline@metrolinx.com).