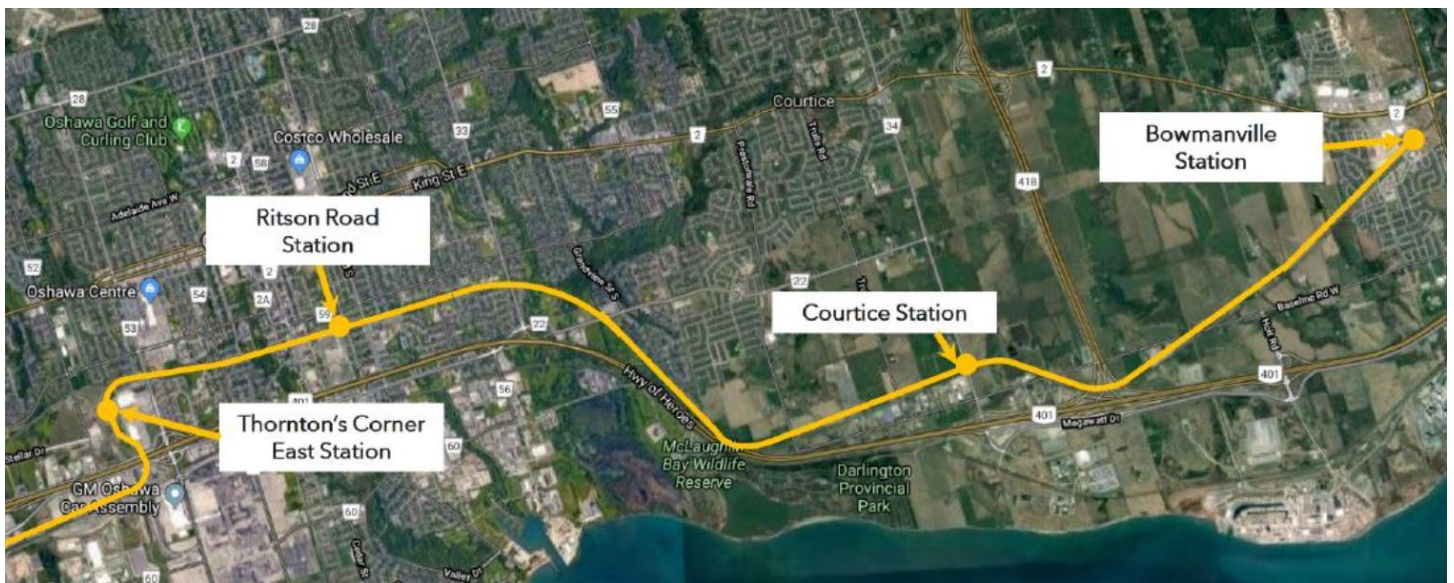


Subsurface Utility Engineering Investigative Works

August 2023 - January 2024



Project Overview

As part of subsurface utility investigation works, crews will be utilizing hydrovac equipment to expose buried utilities in municipal rights of way. The purpose of this work is to collect important utility information for the future Bowmanville Extension Project between Durham College Oshawa GO Station in Oshawa, and Bowmanville Avenue in Bowmanville along the Canadian Pacific Kansas City (CPKC) Corridor.

This construction notice can be translated into a different language upon request by emailing us at DurhamRegion@metrolinx.com.

Cet avis de travaux de construction est disponible en français. Si vous êtes intéressé, veuillez envoyer un courriel à DurhamRegion@metrolinx.com.

Contact Us:

✉ Write to us at: DurhamRegion@metrolinx.com

🐦 Find us on Twitter [@GOExpansion](https://twitter.com/GOExpansion)

🌐 Visit the website: www.metrolinx.com/en/bowmanville-extension

WHAT TO EXPECT

- Residents should expect some noise, vibration, dust, and site lighting. Work crews will take reasonable precautions to minimize disturbances to residents.
- Crews will use a hydro-vac truck to perform the investigation works.
- To provide an example of the type of works, please view an explanatory video [here](#).
- Crews will excavate one test pit at a time, and the work zone will be safely delineated.
- Minor vegetation may be removed to accommodate the earthworks; however, trees will not be impacted.
- Further similar works will be coming along the Canadian Pacific Kansas City (CPKC) Corridor, with dates to be confirmed.

HOURS OF WORK

- Intermittent test hole excavation is expected to occur from the months of August 2023 to January 2024, subject to change.
- Work is expected to take place within the hours of 7:00 a.m. to 5:00 p.m., five days per week (Monday to Friday).
- *Work may be rescheduled or extended due to weather conditions or unforeseen circumstances.*

PEDESTRIAN, TRAFFIC AND TRANSIT DETAILS

- There are no major impacts anticipated to public transit modes, traffic, or pedestrians during this work.
- In some work locations, traffic lanes and sidewalks may be restricted for equipment set up and for utility investigation works.
- Works which require any lane closures will be marked with adequate traffic signage and flagging crew will be present accordingly to allow for passing traffic to move past work locations.

OTHER INFORMATION

- As we work to improve transit in your community you may have questions or need to get in touch with us. Metrolinx has a dedicated community engagement team in place to work with residents and businesses in Durham Region.
- Contact us at: DurhamRegion@metrolinx.com or 416-202-3900.

Information as of: August 25, 2023

This construction notice can be translated into a different language upon request by emailing us at DurhamRegion@metrolinx.com.

Cet avis de travaux de construction est disponible en français. Si vous êtes intéressé, veuillez envoyer un courriel à DurhamRegion@metrolinx.com.

Contact Us:

✉ Write to us at: DurhamRegion@metrolinx.com

🐦 Find us on Twitter [@GOExpansion](https://twitter.com/GOExpansion)

🌐 Visit the website: www.metrolinx.com/en/bowmanville-extension