

**The Ontario Line  
Lakeshore East Joint Corridor  
Early Works  
Construction Liaison Committee**

**August 10, 2023**

# Land Acknowledgement

Let us take a moment to acknowledge we are on lands that have been, and continue to be, home to many Indigenous Peoples including the Anishnabeg, the Haudenosaunee and the Huron-Wendat peoples.

We are all Treaty people. Many of us have come here as settlers, as immigrants or involuntarily as part of the trans-Atlantic slave trade, in this generation, or generations past.

We acknowledge the historic and continued impacts of colonization and the need to work towards meaningful reconciliation with the original caretakers of this land.

We acknowledge that Metrolinx operates on territories and lands covered by many treaties that affirm and value the rights of Indigenous communities, Nations and Peoples.

We understand the importance of working towards reconciliation with the original caretakers of this land. At Metrolinx, we will conduct business in a manner that is built on a foundation of trust, respect and collaboration.

# Agenda

## Welcome

- Land Acknowledgement
- Safety Moment

## CLC Terms of Reference

## Construction Update:

- Construction Progress Update
- Upcoming Construction Activities
- Update: Bridge Works and Road Closures
- Construction Mitigations
- Noise Monitoring

## Discussion/Next CLC



# SAFETY MOMENT

## Pedestrian Safety

- Demolition and construction activities often result in sidewalk closures and diversions.
- Temporary walkways are put in place to allow safe mobility around construction zones.
- Temporary walkways must be clearly marked to allow for safe mobility.
- Stay safe! Please obey and follow all posted signs around construction areas.

THINK *Safe*

ACT *Safe*

HOME *Safe*



# Action Items and Responses: July CLC

Action	Response
<p><b>LURA/DCC to explore noise mitigation for generator at Queen St bridge.</b></p>	<p>The generator used at Queen St. E. bridge was a small portable generator. Barriers cannot be installed around these small generators because they will overheat, which creates an unsafe working condition. The Contractor’s larger generators are insulated to reduce noise. The activity that necessitated the generator has been completed.</p>
<p><b>LURA/DCC to provide details about plan for fencing at 242 First Ave and dog park on Gerrard.</b></p>	<p><b>242 First Ave:</b> After demolition work is fully complete, the site will be fenced-in with fast-fence. Security will regularly patrol to ensure the sites remain unoccupied. Pedestrians or public will not be able to access the private property sites as they are still Metrolinx owned properties. In 2025 the sites will be used for the Ontario Line contractor to build access to the north side of the corridor. Date to be confirmed by the contractor.</p> <p><b>Dog Off Leash Area:</b> Construction fencing with filter cloth will be installed around the site once construction begins.</p>
<p><b>LURA/DCC to confirm when road closure dates are finalized.</b></p>	<p>Update on road and rail closure dates will be shared at CLC meetings and with community construction notices.</p>
<p><b>Metrolinx to confirm location of retaining wall for future stations on Queen St E and Gerrard St.</b></p>	<p>The location for the retaining wall will be approximately 2 meters outward from where the retaining wall is currently located.</p>

# Action Items and Responses: July CLC Continued

Action	Response
<p><b>Metrolinx to take back request to share further details about noise monitoring.</b></p>	<p>Further details about noise monitoring locations, purpose, and exceedance action plan will be provided as part of the CLC presentation.</p>
<p><b>LURA/DCC to include mitigation measures in construction updates if applicable.</b></p>	<p>An outline of construction mitigation measures will be included as part of the CLC presentation and community construction notices.</p>
<p><b>Confirm that for 'Major work' work, with overnight hours and road closures, that the radius of notices mailed will be 1km, not 500m.</b></p>	<p>For major work with overnight hours or road closures, we rely on various ways to distribute notices that are most effective, including a mail drop distribution of more than 500m. We also share notices electronically, on social media posts, Ontario Line newsletter, and during community pop-up events. We are working to expand our electronic distribution list to help broaden our reach. (Metrolinx Project Co's are contractually obligated to adhere to a 500m radius)</p>
<p><b>Metrolinx to include a running Gant chart of all construction activity on all notices.</b></p>	<p>Contractors are contractually obligated to provide community construction notices based on specific construction activities where there are impacts to the community such as traffic, pedestrians, transit, road impacts, noise impacts and or overnight construction activities. We plan to release a timelapse video of the construction sequencing that will show the upcoming phases of the construction work in a visual way.</p>



## Action Items and Responses: July CLC Continued

Action	Response
<b>Metrolinx to confirm that our CAC will post recordings of each meeting, as done with the Design Working Group. Metrolinx to send video for the CAC to post</b>	Metrolinx to share the CLC recordings with all CLC members, as long as all CLC members agree with the CAC posting the video, Metrolinx is comfortable with the CAC sharing the recordings. Metrolinx is posting the CLC decks and meeting summaries to the Ontario Line community pages.

# Complaints and Issues Tracker

Complaint / Issue	Resolution
<p><b>Noise</b></p> <ul style="list-style-type: none"> <li>Eastern Ave</li> <li>June 23, 2023</li> </ul>	<ul style="list-style-type: none"> <li>Call from resident who reported being awoken by loud noises or workers early in the morning.</li> <li>Resolution: Contractor was not working during the reported times.</li> </ul>
<p><b>Noise</b></p> <ul style="list-style-type: none"> <li>Jimmie Simpson Park</li> <li>July 6, 2023</li> </ul>	<ul style="list-style-type: none"> <li>Report of high volume of dispatch radio from workers in the rail corridor in Jimmie Simpson park.</li> <li>Resolution: Contractor was not working adjacent to Jimmie Simpson Park within the reported timeframe.</li> </ul>
<p><b>Noise</b></p> <ul style="list-style-type: none"> <li>Jimmie Simpson Park</li> <li>Aug 3, 2023</li> </ul>	<ul style="list-style-type: none"> <li>Call from resident who reported loud noise in the rail corridor in Jimmie Simpson park</li> <li>Resolution: Contractor was not working adjacent to Jimmie Simpson Park within the reported timeframe of 2am.</li> </ul>
<p><b>Parking Conflict</b></p> <ul style="list-style-type: none"> <li>Fontbonne Parking Lot</li> <li>Aug 3, 2023</li> </ul>	<ul style="list-style-type: none"> <li>Report of contractor vehicles parked in private parking lot without permission</li> <li>Resolution: Site supervisor issued a reminder to all crew members that vehicles cannot enter the parking lot for any means. Supervisor addressed infraction directly with the workers involved.</li> </ul>
<p><b>Noise</b></p> <ul style="list-style-type: none"> <li>Jimmie Simpson Park</li> <li>Aug 9, 2023</li> </ul>	<ul style="list-style-type: none"> <li>Call from resident who reported being awoken by loud construction noise coming from the rail corridor.</li> <li>Resolution: Contractor was working in the rail corridor completing grading work that was noted in the August Queen Street Bridge construction notice.</li> </ul>



# Ontario Line Construction Update Lakeshore East Joint Corridor Early Works Construction

# Construction Progress Updates

## Completed works:

- ✓ Riverdale platform demolition and removal
- ✓ Twenty-seven piles completed at Logan Ave. bridge
- ✓ Queen St. E. bridge pier strengthening
- ✓ CN Cable Relocation

## Access Road Construction Progress:

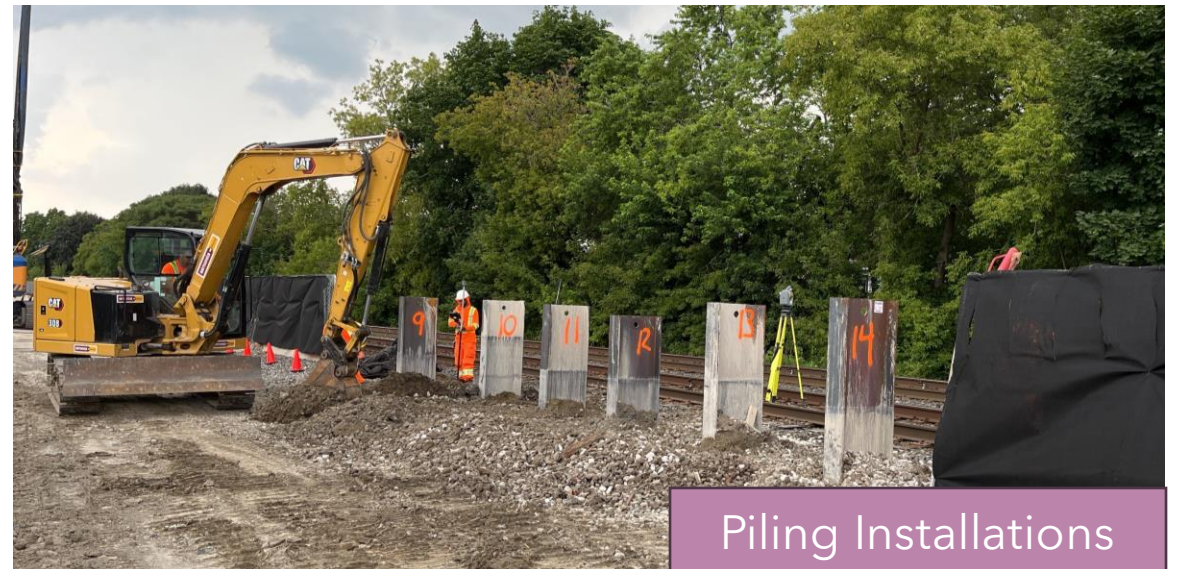
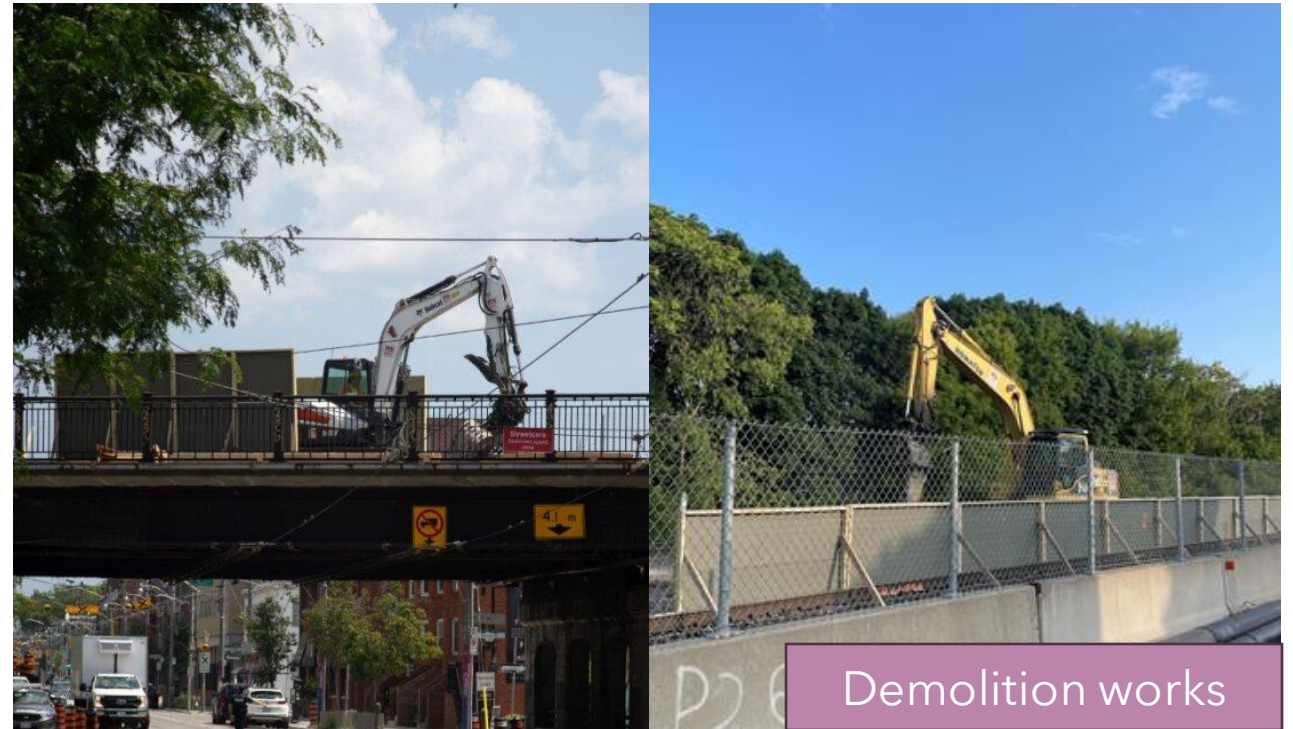
### Completed:

- ✓ Eastern Ave/Dibble St
- ✓ Queen St/McGee St
- ✓ 10 Dickens
- ✓ Dundas St. behind Paisley Ave

### Remaining:

- Queen St North: Starting late September 2023
- Dundas St/Logan Laneway - Starting late August 2023
- Pape Ave - Starting August 14, 2023

Each access road will take approximately one week to complete





# Construction Progress Photos: Riverdale Platform Removal



BEFORE



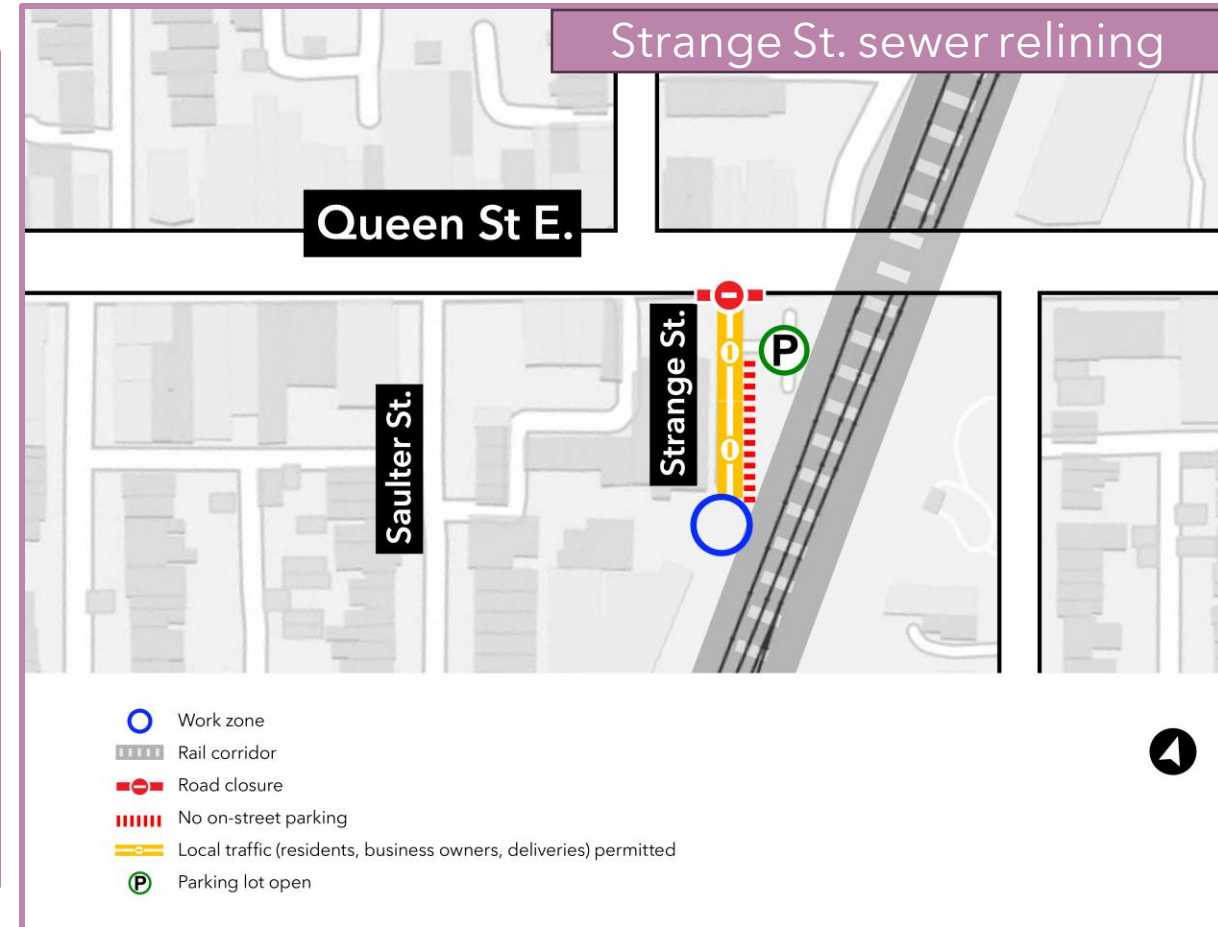
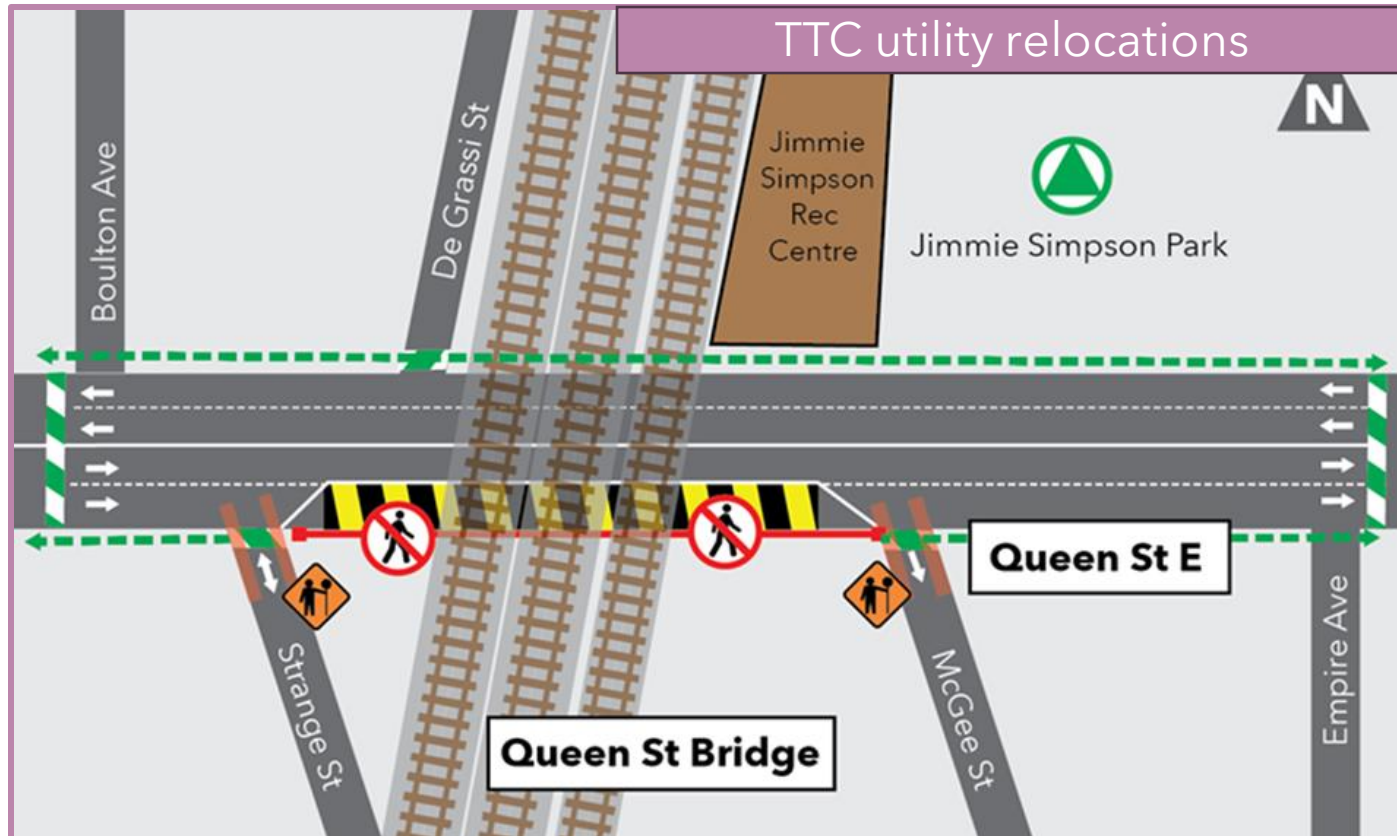
AFTER



## Construction Update: Out-of-corridor works

Activity	Location	Timelines	What to Expect
<b>TTC utility relocations</b>	South side of Queen St. E. between McGee St. and Strange St.	Ongoing for approximately six (6) weeks	<ul style="list-style-type: none"> <li>• Eastbound traffic reduced to one lane on Queen St. E.</li> <li>• Sidewalk on south side of Queen St. E. closed between McGee St. and Strange St.</li> </ul>
<b>2 Paisley Avenue demolition</b>	2 Paisley Ave.	Starting as early as Monday, August 21 for approximately one (1) month	<ul style="list-style-type: none"> <li>• Noise from excavators, trucks, and material loading</li> <li>• Construction access from Dundas Street E / temporary access road</li> </ul>
<b>Strange St./Dibble St. sewer relining</b>	Strange St. and Dibble St.	Starting late August 2023 for approximately one-two (1-2) days	<ul style="list-style-type: none"> <li>• Strange St. closed at Queen St. E. (local traffic permitted)</li> <li>• No street parking on Strange St.</li> <li>• Parking lot will remain open</li> </ul>
<b>Jimmie Simpson Park hoarding installation</b>	Rail Corridor/Jimmie Simpson Park	Starting September 2023 for approximately three (3) weeks	<ul style="list-style-type: none"> <li>• Installation of construction fencing within the park along the boundary playground</li> <li>• Use of construction equipment within the corridor, including a crane and excavator</li> <li>• Construction visible from the park</li> </ul>

# Utility Works Traffic Configurations:



# Queen St. E. Closure

## Hours of work:

- Friday August 11 at 11 p.m. until Monday August 14, 2023 at 4 a.m.
- 24-hour work

## Construction activities:

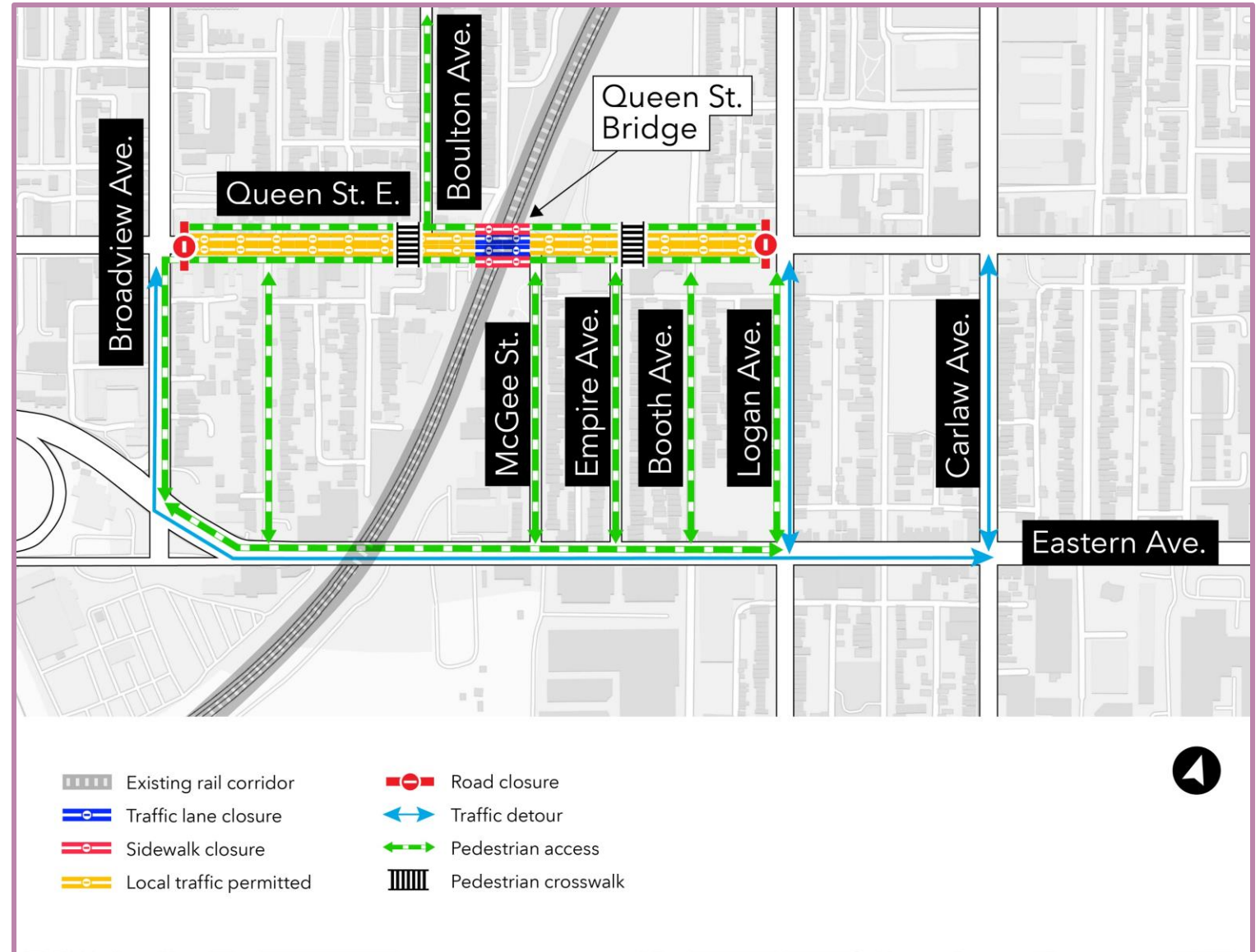
- Bridge span installation (day work)
- Grading and levelling soil and gravel (night and day work)

## Construction equipment:

- Mobile crane, lifts, flatbed truck, excavator, roller, and loaders

## Traffic, pedestrian, and transit details:

- No traffic or pedestrian access on Queen St. E. beneath the rail bridge
- Train service in the rail corridor will be shut down
- TTC 501 Streetcar will be replaced with buses





# Update: Bridge Reconstruction and Road Closures

Activity	Timelines	What to Expect
<b>Dundas St Bridge:</b> <ul style="list-style-type: none"> <li>Bridge deck demolition and reinforcement</li> </ul>	<b>Friday, September 8 - Monday, September 11, 2023</b> <ul style="list-style-type: none"> <li>Starting on Friday at 11:00 p.m. until 4:00 a.m. on Monday</li> </ul>	<ul style="list-style-type: none"> <li><b>Full weekend closure of Dundas Street East beneath the bridge</b></li> <li>Overnight work</li> </ul>
<b>Logan Ave Bridge:</b> <ul style="list-style-type: none"> <li>Bridge deck demolition and reinforcement</li> </ul>	<b>Friday, September 15 to Monday, September 18, 2023</b> <ul style="list-style-type: none"> <li>Starting on Friday at 11:00pm until 4:00 a.m. on Monday</li> </ul>	<ul style="list-style-type: none"> <li><b>Full weekend closure of Logan Ave beneath the bridge</b></li> <li>Overnight work</li> </ul>
<b>Rail Corridor:</b> <ul style="list-style-type: none"> <li>Track realignment</li> </ul>	<b>Friday September 22 - Monday September 25, 2023</b> <ul style="list-style-type: none"> <li>Construction starting on Friday night at 9:00 p.m. until Monday morning at 6:00 a.m.</li> </ul>	<ul style="list-style-type: none"> <li>Suspension of GO train service on the Lakeshore East Line</li> <li>Alternating traffic lane and sidewalk closures on Queen St East</li> <li>Overnight work</li> </ul>
<b>Queen St Bridge:</b> <ul style="list-style-type: none"> <li>To facilitate bridge demolition works</li> </ul>	<b>Sunday September 3 - Sunday October 8, 2023</b> <ul style="list-style-type: none"> <li>Exact hours TBD</li> </ul>	<ul style="list-style-type: none"> <li>TTC 501 Queen Streetcar replaced with buses</li> </ul>
<b>Queen St Bridge:</b> <ul style="list-style-type: none"> <li>Bridge deck demolition and removal</li> </ul>	<b>Friday, September 29 - Monday October 2, 2023</b> <ul style="list-style-type: none"> <li>Queen St closure starts on Saturday at 4:00 a.m. and continues until Monday at 4:00 a.m.</li> </ul>	<ul style="list-style-type: none"> <li><b>Full weekend closure of Queen St E beneath the bridge</b></li> <li>TTC 501 Queen streetcar replaced with buses</li> <li>Overnight work</li> </ul>

# Noise Monitoring

## **Purpose of noise monitors:**

- Ensures noise from construction activity adheres to municipal bylaws
- Ensures potential noise exceedances are detected and resolved
- Monitoring data is used to investigate noise complaints and optimize mitigation measures where needed

## **Exceedance action plan:**

1. Noise specialist contacts on-site staff to confirm if the noise exceedance is related to construction
2. If exceedance is construction-related, the Contractor will immediately stop operations or adjust the work to ensure noise levels are within acceptable limits
3. Analysis conducted by an acoustic engineers to identify possible mitigations to reduce likelihood of future exceedances

## **Noise monitor placement:**

- Qualified noise experts have chosen monitoring locations based on site conditions
- Noise monitors are located adjacent to highly active construction sites throughout the Lakeshore East Rail Corridor

# Construction Mitigation



## Noise Barriers

Where possible, temporary barriers surround loud equipment to reduce noise.



## Advance Notice

Providing notice ahead of construction to give local stakeholders the opportunity to ask questions and plan for the work.



## Site Maintenance

Keeping the site clean and tidy to support the positive appearance of the neighbourhood.



## Noise Monitors

Located throughout the rail corridor, these monitors measure noise to make sure proper levels are maintained.



## Hoarding and Signage

Hoarding provides a protective barrier between the construction site and the public. Signage informs of ongoing and upcoming work, as well as way-finding.



## 24-Hour Support

Providing a 24-hour call number to address complaints and issues.



## Mindful Work Schedules

Work is scheduled to consider community needs, other major projects, and neighbourhood events.



## Good Neighbor Approach

Making sure project staff are considerate of the community during construction.

# What's Next and Wrap Up

## CLC Meeting Cadence for 2023

The CLC will meet on the second Thursday of each month at 6:00 to 7:30 p.m.

Virtual with hybrid option at the Community Office.

- September 14
- **October 12**
- November 9
- December 7

# Community Outreach & Engagement

- **Community Pop-Ups:**
  - Fontbonne Ministries - August 9th site visit
  - 444 Logan Ave (Ray McCleary Tower) - August 15th
- **August Weekend Road Closure:**
  - Community Office Open - Saturday from 9am-5pm & Sunday from 12pm-5pm
  - Metrolinx representatives around Queen Street East Bridge during closure
- **Business Canvassing**
  - Ongoing canvassing ahead of major construction with the Riverside BIA





# Contact Us

**Metrolinx will keep the community, residents and businesses informed by providing project updates, seeking input and feedback, and addressing questions and concerns effectively and quickly.**

## Stay connected:

Ontario Line e-newsletter @ [Metrolinx.com/OntarioLine](https://www.metrolinx.com/OntarioLine)

## Questions or comments:

[OntarioLine@metrolinx.com](mailto:OntarioLine@metrolinx.com)

24/7 call # 416-202-5100

## Follow us on social media:

Twitter / Facebook / Instagram @ OntarioLine

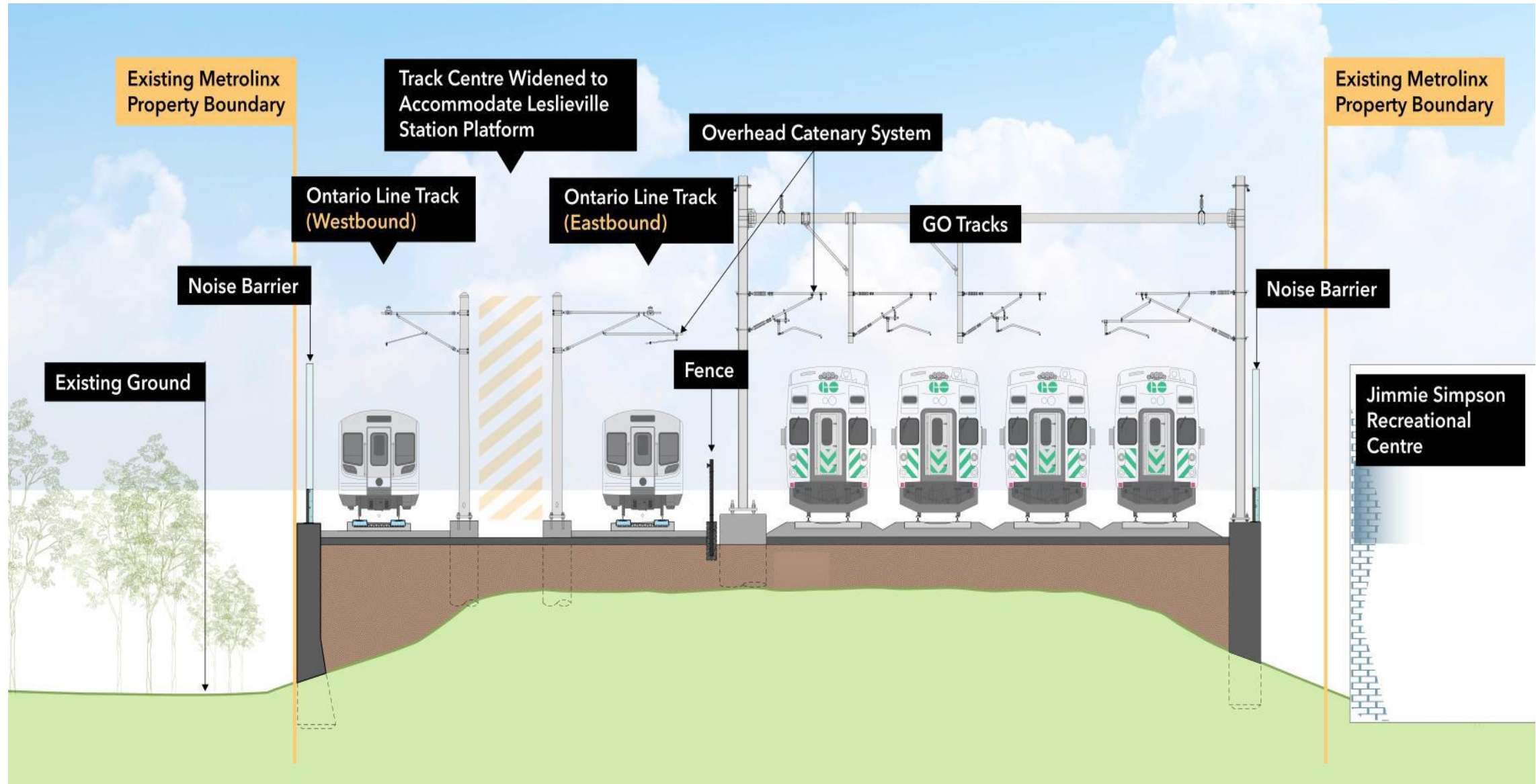


# Questions and Answers



# Appendix

# Summary of Lakeshore East Joint Corridor Early Works



# Construction Liaison Committees (CLC)

Construction Liaison Committees (CLCs) provide open, two-way communication and sharing of information before and during the construction of the Ontario Line project. The CLC will focus on the impacts, issues and areas of concern for resolution related to the Ontario Line construction within the Leslieville/Riverside neighbourhoods. The full Terms of Reference will be shared with the CLC via email.

- The CLC will meet regularly as construction activities get underway
- CLC frequency is flexible, depending on schedules/availability and critical construction work
- Metrolinx will work with stakeholders to develop meeting agendas
- Meetings will last 60-90 minutes, depending on the agenda
- Metrolinx to chair the CLC with support from the project contractor
- Project contractor will participate and lead the construction updates
- Action items/issues/complaints to be logged for resolution

## Construction Liaison Committee (CLC)

### Community representatives



- Elected officials
- Community groups/residents
- Residents' groups/associations
- Tenant representatives
- BIAs
- Business owners

### City of Toronto



### Project team members



- Metrolinx—representatives from Subways Sponsors Office, Design Division, Community Engagement, Project Teams and Contractor/Project Co.



## Who Does What?



A division of CRH Canada Group Inc.

Responsible for construction delivery, establishing the construction schedule, determining construction plans and the care and control of construction sites.



Contribute subject matter expertise regarding City polices, requirements, permits and procedures.

Ensure key City and community interests are noted and addressed through application design reviews and permits.

Work with partners to minimize negative impacts on residents and the environment.

Monitor construction sites for safety and adherence to City standards and bylaws.



Overarching accountability for entire project, strategy and content approvals, building relationships and understanding needs of the community.

Oversight of construction contractors to ensure compliance with contractual obligations, including work schedules, adherence to acceptable noise levels, traffic management plans and permit conditions.

# CLC Code of Conduct



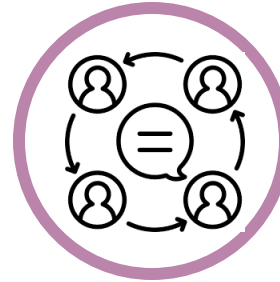
**Participate** fully, openly, and transparently in discussions, while also creating an environment where all members are encouraged to contribute and share their views.



**Participate** in a respectful manner towards other CLC members by using appropriate language.



Keep requested agenda and discussion items within the **mandate and scope** of the **Construction Liaison Committee**.



**Represent** their community's diverse perspectives and interests.



**Maintain** confidentiality of sensitive issues, when requested by participants.



**Commit** to equity, diversity and inclusion by supporting the participation of the whole community regardless of race, gender, class, sexuality, age or ability.