

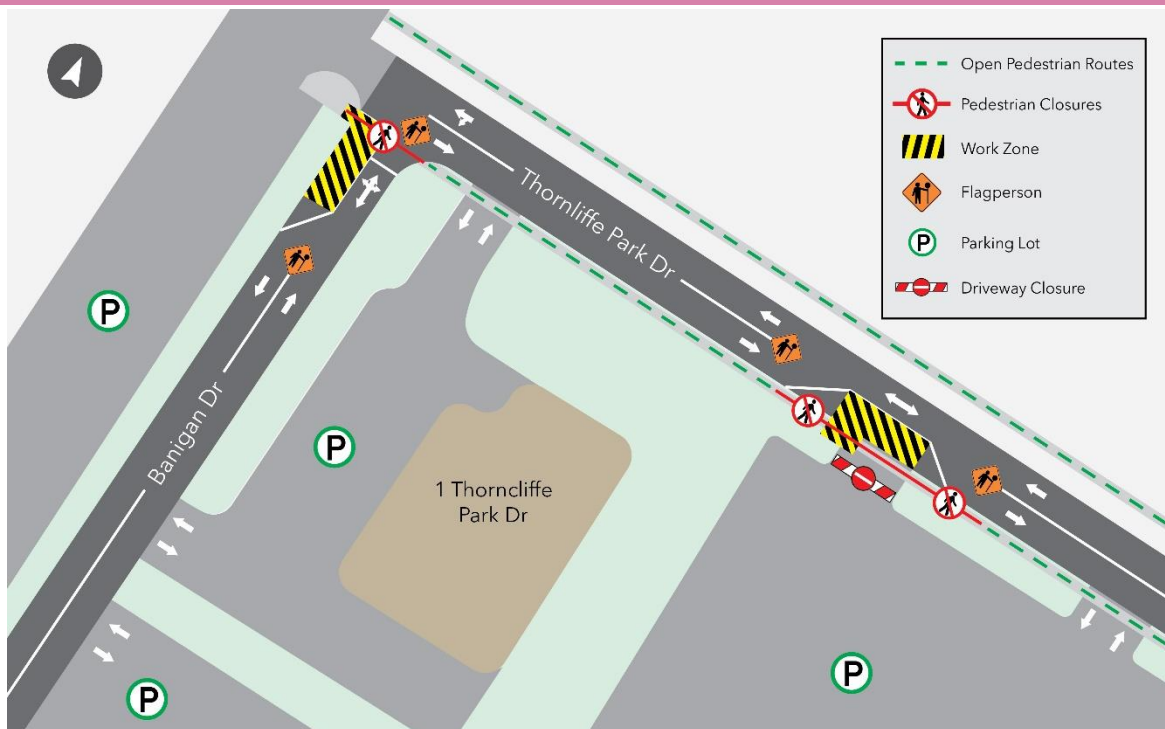
Investigative Work at Thorncliffe Park Dr and Banigan Dr

Scheduled start date: As early as October 2nd, 2023

Expected duration: One day

Timing: 9:00 p.m. – 5:00 a.m.

Map of work area:



What is happening?

- On Monday, October 2nd, 2023, investigative work will take place to verify ground conditions and locations of existing utilities to prepare for the Ontario Line construction.
- Construction equipment including a hydro-vacuum truck, saws, and hand-held devices will be required to complete this work.

- Crews must use non-mechanical excavation methods (hydro-vacuuming) when working within 2 meters of buried utilities to ensure public and worker safety and protect utilities from damage.
- This work will take place between 9 a.m. to 5 p.m. for one day.

What to expect

- Residents and businesses near the work site can expect to hear some noise caused by trucks and other construction equipment.
- Short-term traffic lane and sidewalk closures will be required to safely complete this work.
- Crews will always maintain one lane of traffic throughout the duration of the work. A paid duty officer will be on-site to redirect traffic.
- To identify locates, there will be some paint markings and staking.
- Crews will do their best to keep the dust impact low by adding water when performing saw cuts.
- Pylons and barricades will be set up to provide barriers between pedestrians, cyclists, and traffic.
- All necessary permits have been obtained.
- Work may be delayed or rescheduled due to weather conditions or unforeseen circumstances.

About the project

- The Ontario Line will be a 15.6-kilometre subway line that will make it faster and easier to travel within Toronto and beyond.
- The line will bring 15 new stations to the city and will run from Exhibition Place, through the heart of downtown, all the way to the Ontario Science Centre. It will give people more time back in their days, with a trip from one end to the other taking less than 30 minutes compared to the 70 minutes it takes on transit today. There will also be significant relief from crowding throughout the existing transit network thanks to connections to more than 40 other travel options along the way, including the TTC's Line 1 and Line 2, three GO Transit rail lines, and the Eglinton Crosstown LRT.

Contact us:

Call us 24/7 at: [416-202-5100](tel:416-202-5100)

Write to us at: ontarioline@metrolinx.com

Find us on Twitter, Facebook, and Instagram: [@ontarioline](https://www.instagram.com/ontarioline)

Visit the website: www.metrolinx.com/ontarioline

Visit our community office:

770 Queen Street East (near Queen & Broadview)

General hours:

- Mondays, Tuesdays, and Fridays: 9:00 a.m. to 5:00 p.m.
- Wednesdays and Thursdays: 10:00 a.m. to 6:00 p.m.